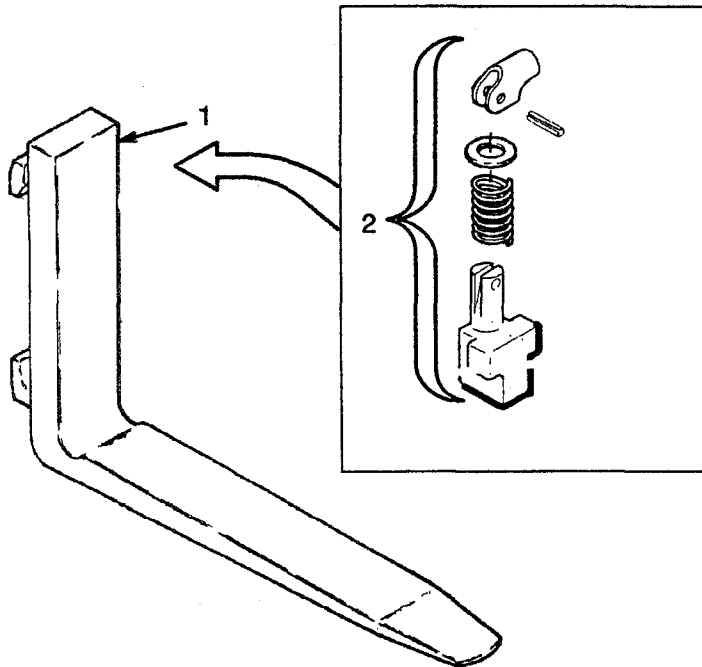


## FORK TWO-STAGE FFL (Figure 159)



**HEADER HOSE  
TWO-STAGE FFL  
THREE FUNCTION**

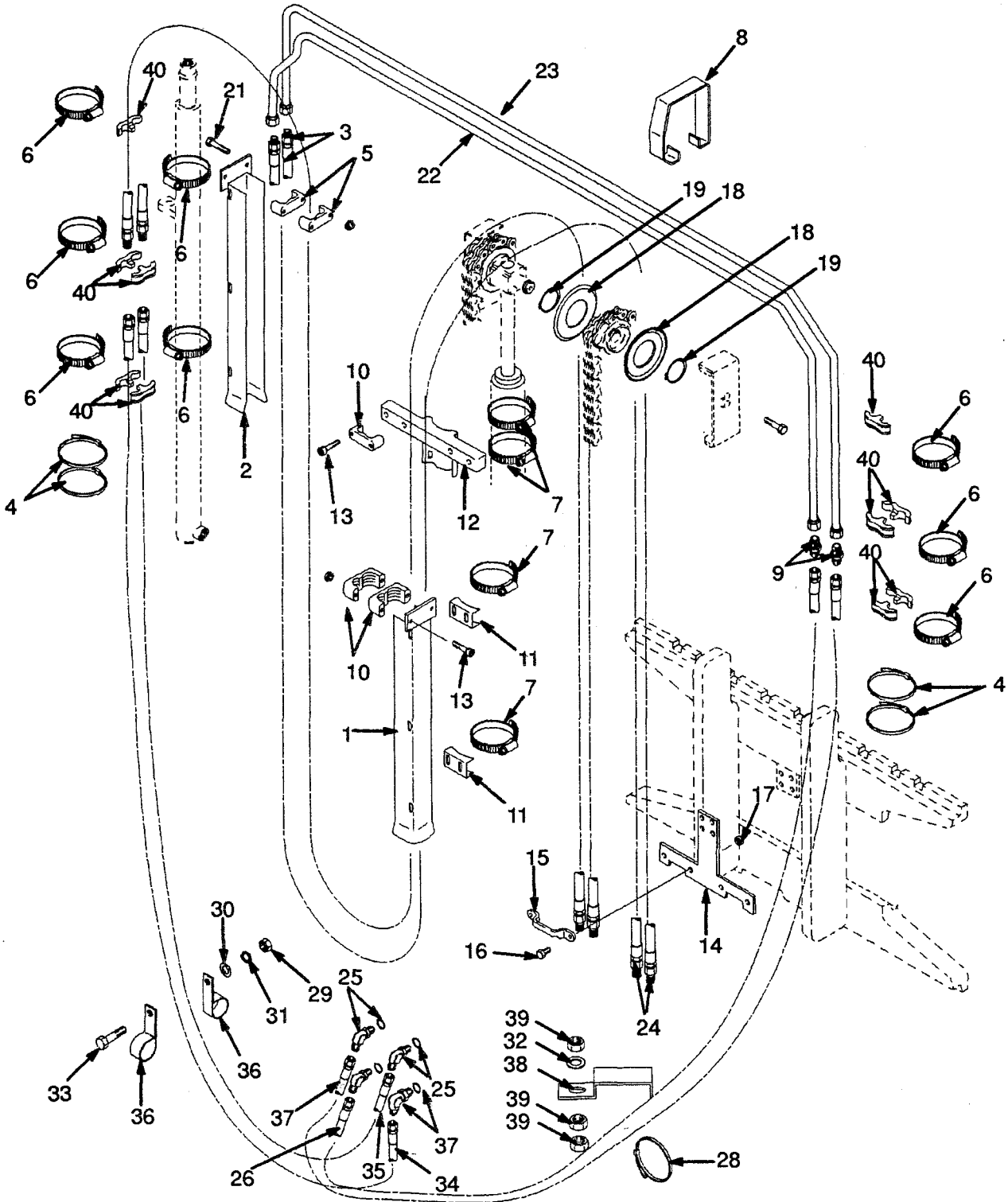
REF NO.	NAME OF PART 1 2 3 4	LIFT HEIGHT TO BOTTOM OF FORKS		
		3048 mm	3248 mm	3848 mm
		PART NO.		
	Mast Group No.	A554-3048	A554-3248	A554-3848
1	Channel	1365501	1365504	1365510
2	Channel	1365514	1365516	1365523
3	Hose	1376110	1376112	1376118
21	Tube	1368546	1368548	1368554
22	Tube	1368576	1368578	1368584

REF	PART NO.	NAME OF PART	QTY	REF	PART NO.	NAME OF PART	QTY
a		Mast Assy	1	18	1345199	Hose Guide	2
1	a	Channel	1	19	1345204	Circlip	2
2	a	Channel	1	20	2004005	Strap Clamp	1
3	a	Hose	2	21	a	Tube	1
4	1375574	Strap	2	22	a	Tube	1
5	1360386	Clamp	1	23	1353530	Clamp	5
6	1360507	Clamp	2	24	1360507	Clamp	3
7	1360508	Clamp	4	25	17222	Fitting	1
8	1365061	Clip	1	25	16483	O-Ring	1
9	14692	Fitting	2	26	1377371	Hose	1
10	1360386	Clamp	2	27	1377372	Hose	1
11	1345423	Bracket	2	28	137852	Strap Clamp	2
12	1354918	Bracket	1	29	16558	Fitting	1
13	293796	Hex Head Bolt	6	29	16483	O-Ring	1
14	1369323	Bracket	1	30	2022830	Clamp	1
15	1369333	Clamp	1	31	239503	Nut	3
16	136749	Hex Head Bolt	6	32	292681	Washer	1
17	313828	Nut	6				

a ☞ Table

## HEADER HOSE TWO-STAGE FFL FOUR FUNCTION

(Figure 158)

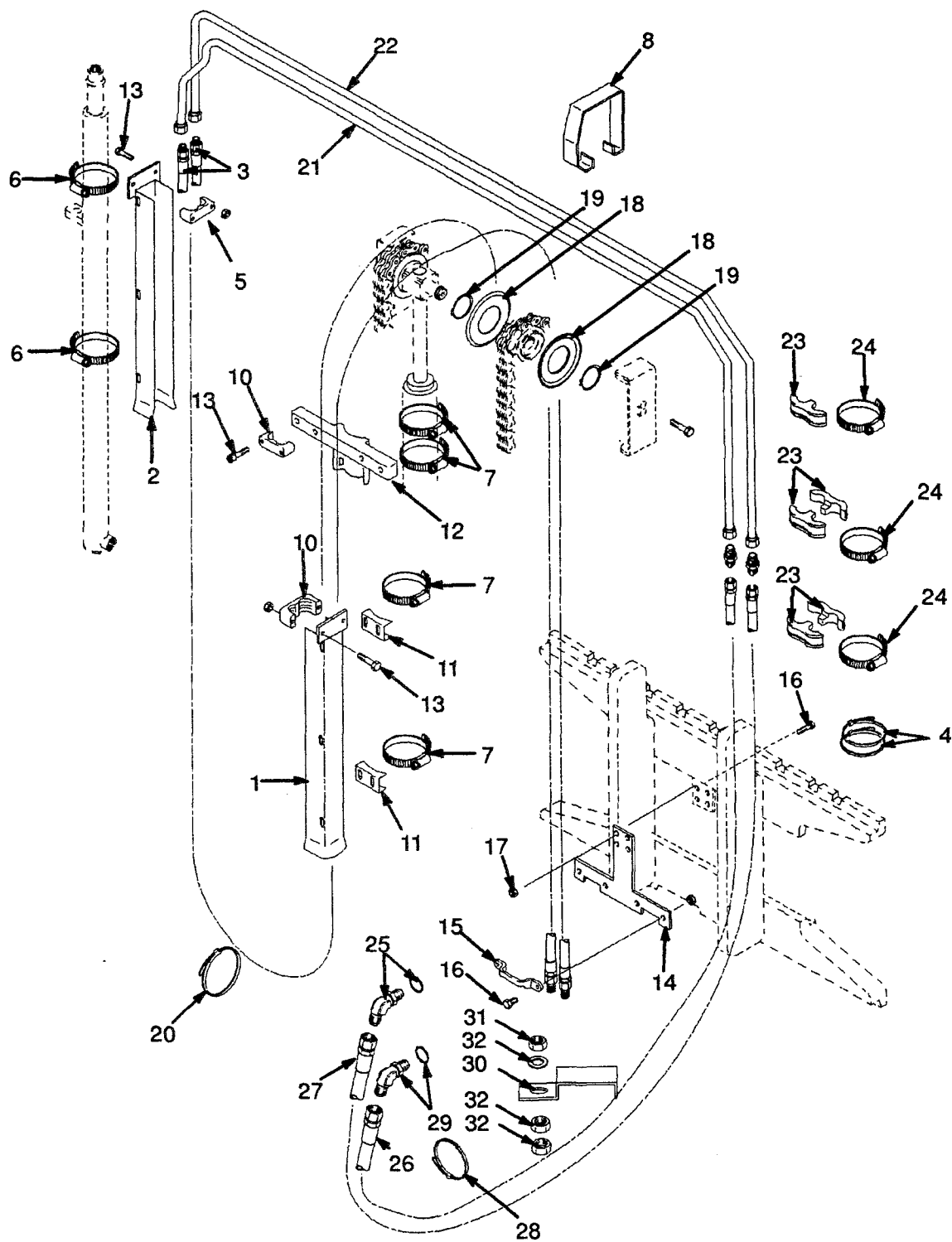


**MAST INSTALLATION  
TWO-STAGE FFL**

REF	PART NO.	NAME OF PART	QTY	REF	PART NO.	NAME OF PART	QTY
1	1363260	Rod End (RH) .....	1	11	1370721	Bush .....	2
2	1363261	Rod End (LH) .....	1	12	1370722	Cap .....	2
3	292531	Hex Head Bolt .....	6	13	308117	Pin .....	2
4	292683	Lockwasher .....	6	14	300982	Bush .....	2
5	216877	Nut .....	2	15	320177	Washer .....	2
6	16001	Grease Fitting .....	2	16	1371655	Split Pin .....	2
7	292514	Hex Head Bolt .....	2	17	.....	Tilt Cylinder .....	2
8	1371287	Washer .....	2			☞ Figure 118	
9	1348185	Bush .....	2	18	292682	Lockwasher .....	2
10	1348188	Pin .....	2				

## HEADER HOSE TWO-STAGE FFL THREE FUNCTION

(Figure 157)



**LOAD BACKREST EXTENSION  
TWO-STAGE FFL**

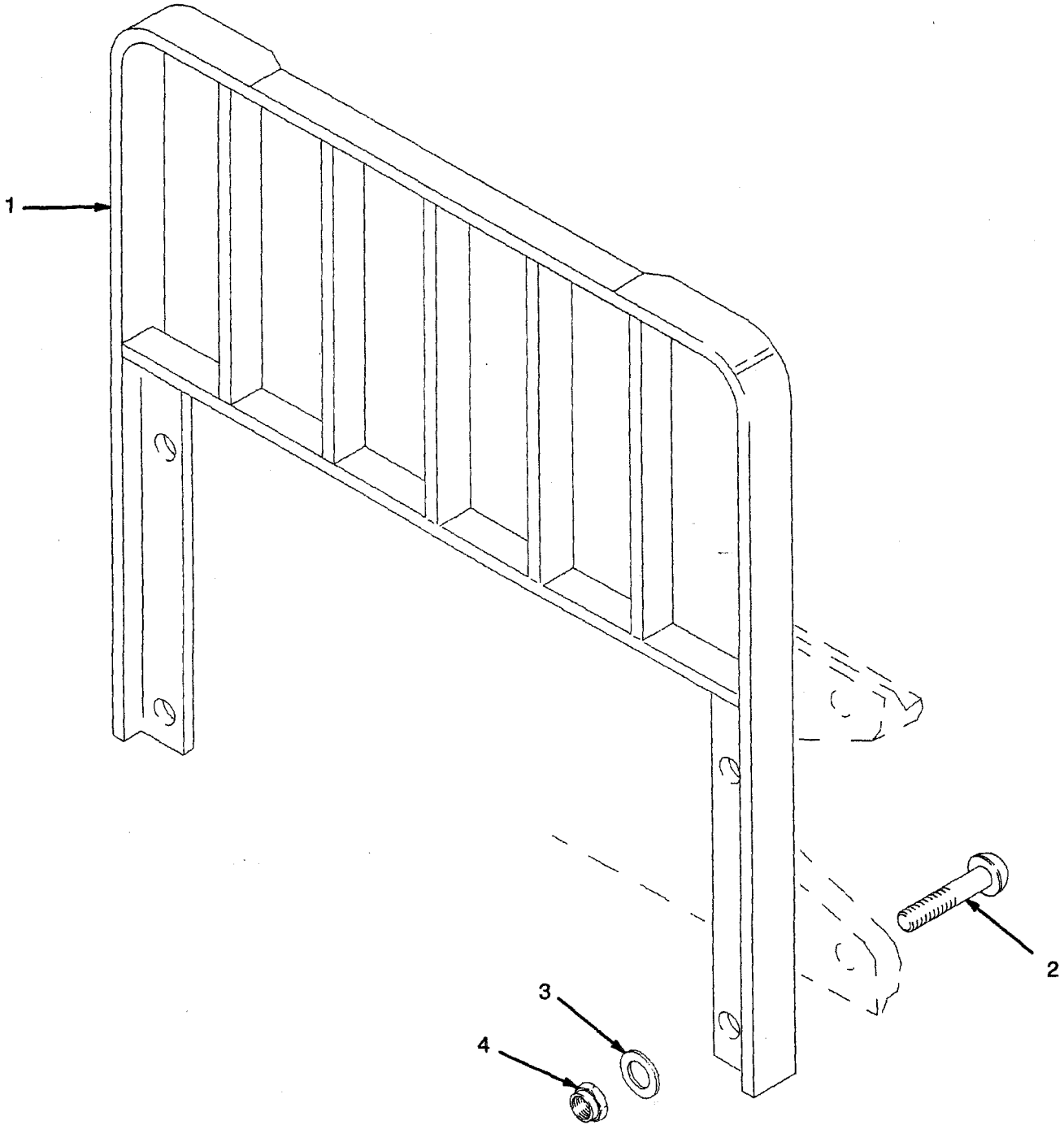
<u>REF</u>	<u>PART NO.</u>	<u>NAME OF PART</u>	<u>QTY</u>	<u>REF</u>	<u>PART NO.</u>	<u>NAME OF PART</u>	<u>QTY</u>
1	1349446	Load Backrest Extension .....	1	3	296423	Washer (Optional) .....	4
2	1353533	Hex Head Bolt .....	4	4	300937	Nut .....	4
3	221771	Washer .....	4				



**CARRIAGE  
TWO-STAGE FFL**

<u>REF</u>	<u>PART NO.</u>	<u>NAME OF PART</u>	<u>QTY</u>	<u>REF</u>	<u>PART NO.</u>	<u>NAME OF PART</u>	<u>QTY</u>
	1353529	Carriage .....	1	6	1353192	Load Roller ("B" 0,76 mm) .....	AR
1	1353469	Frame .....	1	6	1353193	Load Roller ("C" 1,52 mm) .....	AR
2	1345216	Stubshaft .....	6	7	1369345	Chain Anchor .....	2
3	58901	Circlip .....	6	8	1353408	Pin .....	2
4	129387	Shim .....	AR	9	131358	Circlip .....	4
5	366115	Spacer .....	2	10	323161	Pin .....	2
6	1353191	Load Roller ("A" Standard) .....	6	11	15200	Split Pin .....	2

## LOAD BACKREST EXTENSION TWO-STAGE FFL (Figure 155)

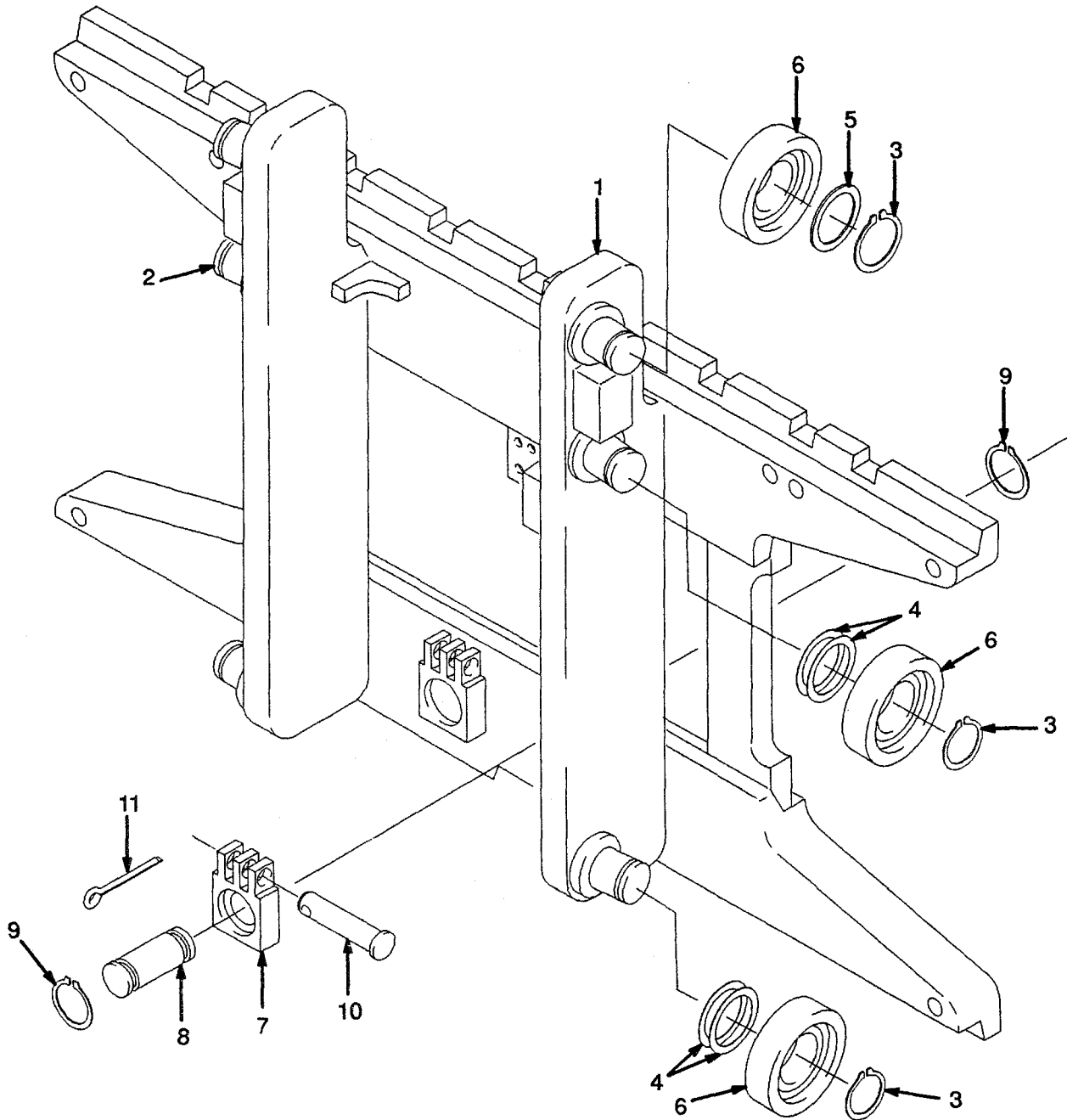


**FREE-LIFT CYLINDER  
TWO-STAGE FFL**

REF NO.	NAME OF PART 1 2 3 4	LIFT HEIGHT TO BOTTOM OF FORKS		
		3048 mm	3248 mm	3848 mm
		PART NO.		
	Group No.	8601906	8601908	8601914
	Lift Cylinder	1362886	1362888	1362894
1	Shell	1362923	1362925	1362931
2	Rod	1362960	1362962	1362968

REF	PART NO.	NAME OF PART	QTY	REF	PART NO.	NAME OF PART	QTY
a		Group No. ....	..	10	b 1362881	Wear Ring .....	1
a		Cylinder .....	1	11	257913	Check Valve .....	1
1	a	Shell .....	1	12	b 39348	O-Ring .....	1
2	a	Rod .....	1	13	297531	Washer .....	1
3	b 2013099	Wiper .....	1	14	187388	Circlip .....	1
4	b 1358970	Seal .....	1	15	1361302	Screw .....	1
5	1362880	Gland .....	1	16	b 190887	Washer .....	1
6	b 615135	Back-Up Ring .....	1	17	186061	Packing Lube .....	AR
7	b 55146	O-Ring .....	1				
8	b 638250	Back-Up Ring .....	1	a		Table	
9	b 201829	Seal .....	1	b		Included In Seal Kit 1360141	

## CARRIAGE TWO-STAGE FFL (Figure 154)



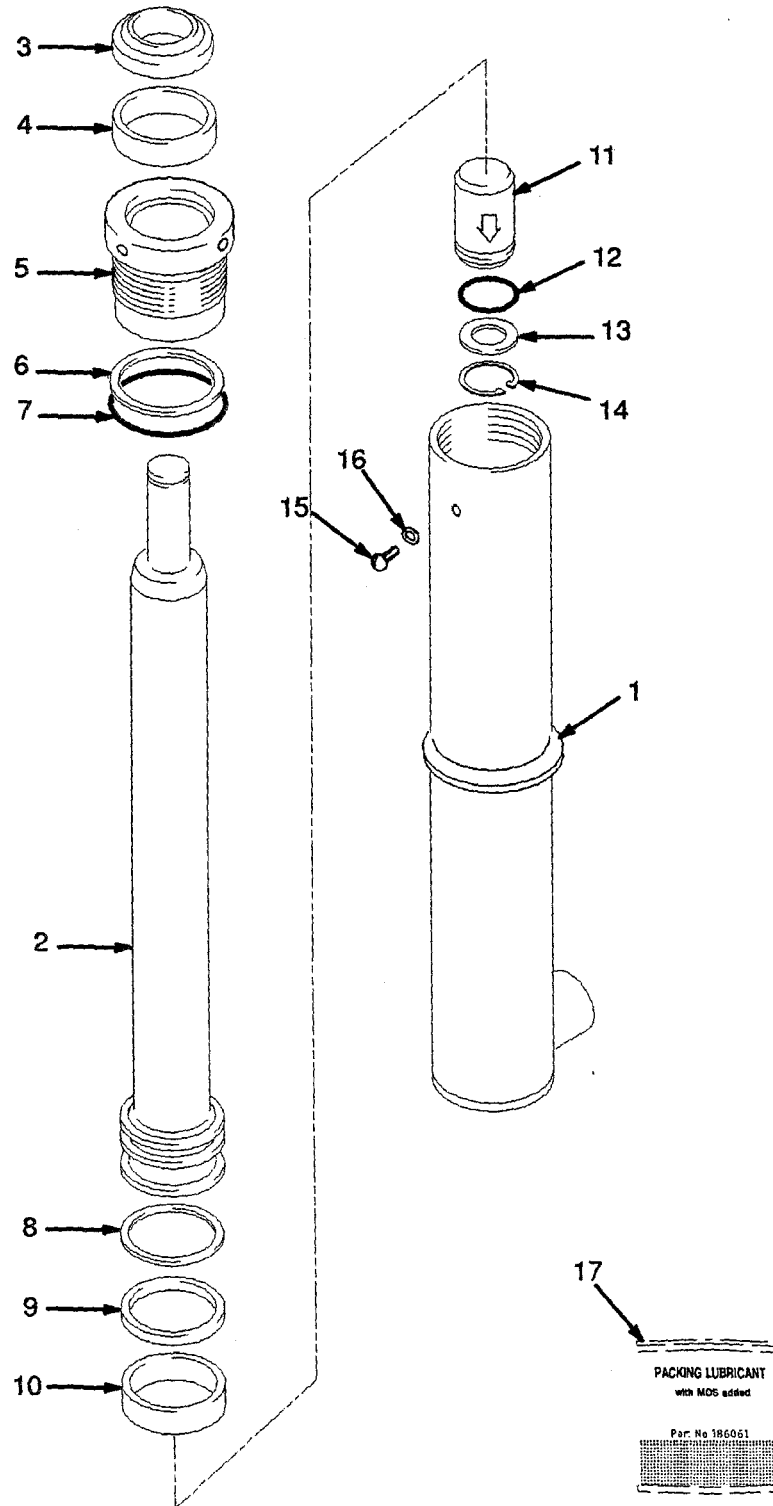
**MAIN CYLINDER  
TWO-STAGE FFL  
RIGHT HAND**

REF NO.	NAME OF PART 1 2 3 4	LIFT HEIGHT TO BOTTOM OF FORKS		
		3048 mm	3248 mm	3848 mm
		PART NO.		
	Group No.	8601806	8601808	8601814
	Lift Cylinder	1362997	1362999	1365555
1	Shell	1365605	1365607	1365613
2	Rod	1365635	1365637	1365643

REF	PART NO.	NAME OF PART	QTY	REF	PART NO.	NAME OF PART	QTY
a		Group No.	1	7 b	55407	O-Ring	1
a		Lift Cylinder	1	8 b	1362871	Wear Ring	1
1 a		Shell	1	9	190887	Sealing Washer	1
2 a		Rod	1	10	295649	Screw	1
3 b	1310369	Wiper	1	11	186061	Packing Lube	AR
4 b	1371654	Seal	1				
5	1365689	Gland	1	a		Table	
6 b	132834	Back-Up Ring	1	b		Included In Seal Kit 1360138	

## FREE-LIFT CYLINDER TWO-STAGE FFL

(Figure 153)

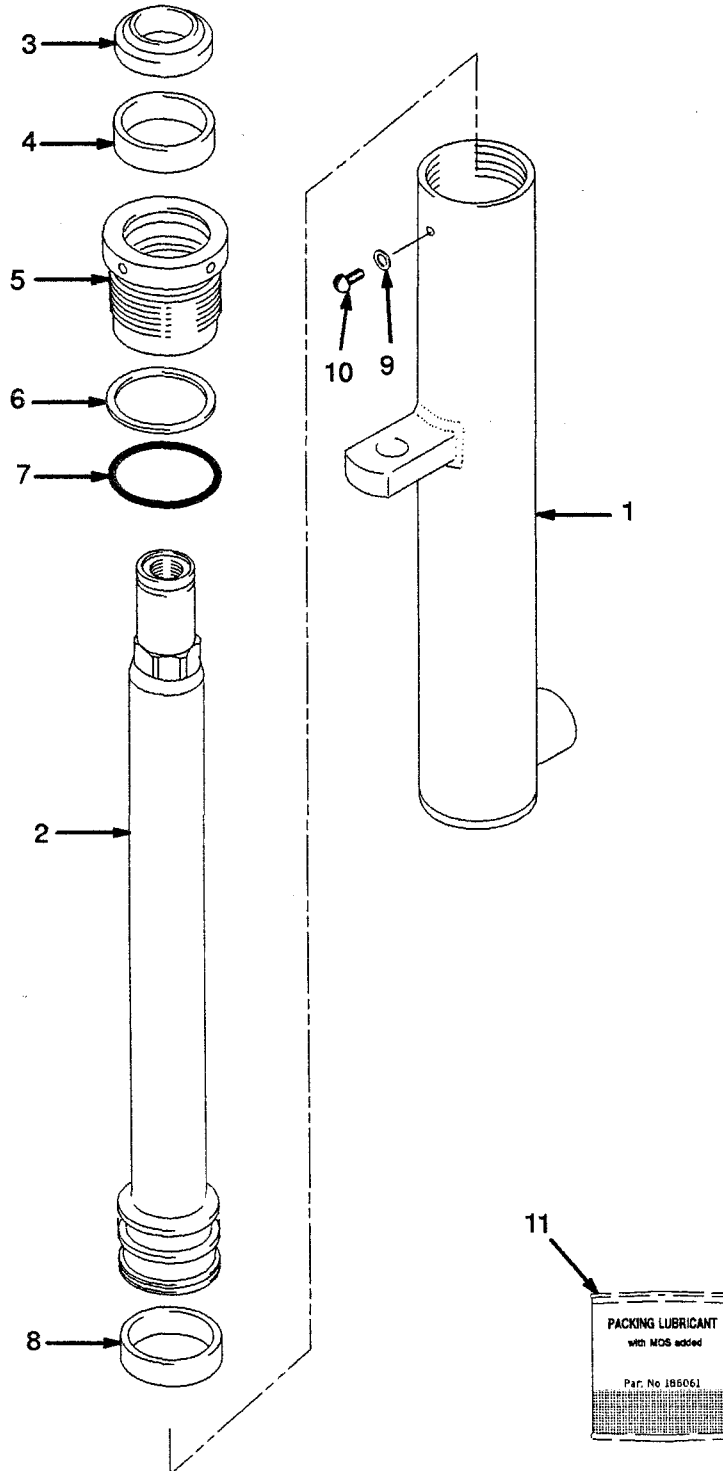


**MAIN CYLINDER  
TWO-STAGE FFL  
LEFT HAND**

REF NO.	NAME OF PART 1 2 3 4	LIFT HEIGHT TO BOTTOM OF FORKS		
		3048 mm	3248 mm	3848 mm
		PART NO.		
	Group No.	8601856	8601858	8601864
	Lift Cylinder	1365576	1365578	1365584
1	Shell	1365605	1365607	1365613
2	Rod	1365664	1365658	1365672

REF	PART NO.	NAME OF PART	QTY	REF	PART NO.	NAME OF PART	QTY
a	.....	Group No. ....	..	8 b	1374802	Wear Ring .....	1
a	.....	Lift Cylinder .....	1	9 b	1362875	Piston Ring .....	1
1 a	.....	Shell .....	1	10	295649	Screw .....	1
2 a	.....	Rod .....	1	11	190887	Sealing Washer .....	1
3 b	1310369	Wiper .....	1	12	186061	Packing Lube .....	AR
4 b	1371654	Seal .....	1				
5	1365689	Gland .....	1	a	☞ Table		
6 b	132834	Back-Up Ring .....	1	b	Included In Seal Kit 1360138		
7 b	55407	O-Ring .....	1				

## MAIN CYLINDER TWO-STAGE FFL RIGHT HAND (Figure 152)



**FREE-LIFT  
TWO-STAGE FFL**

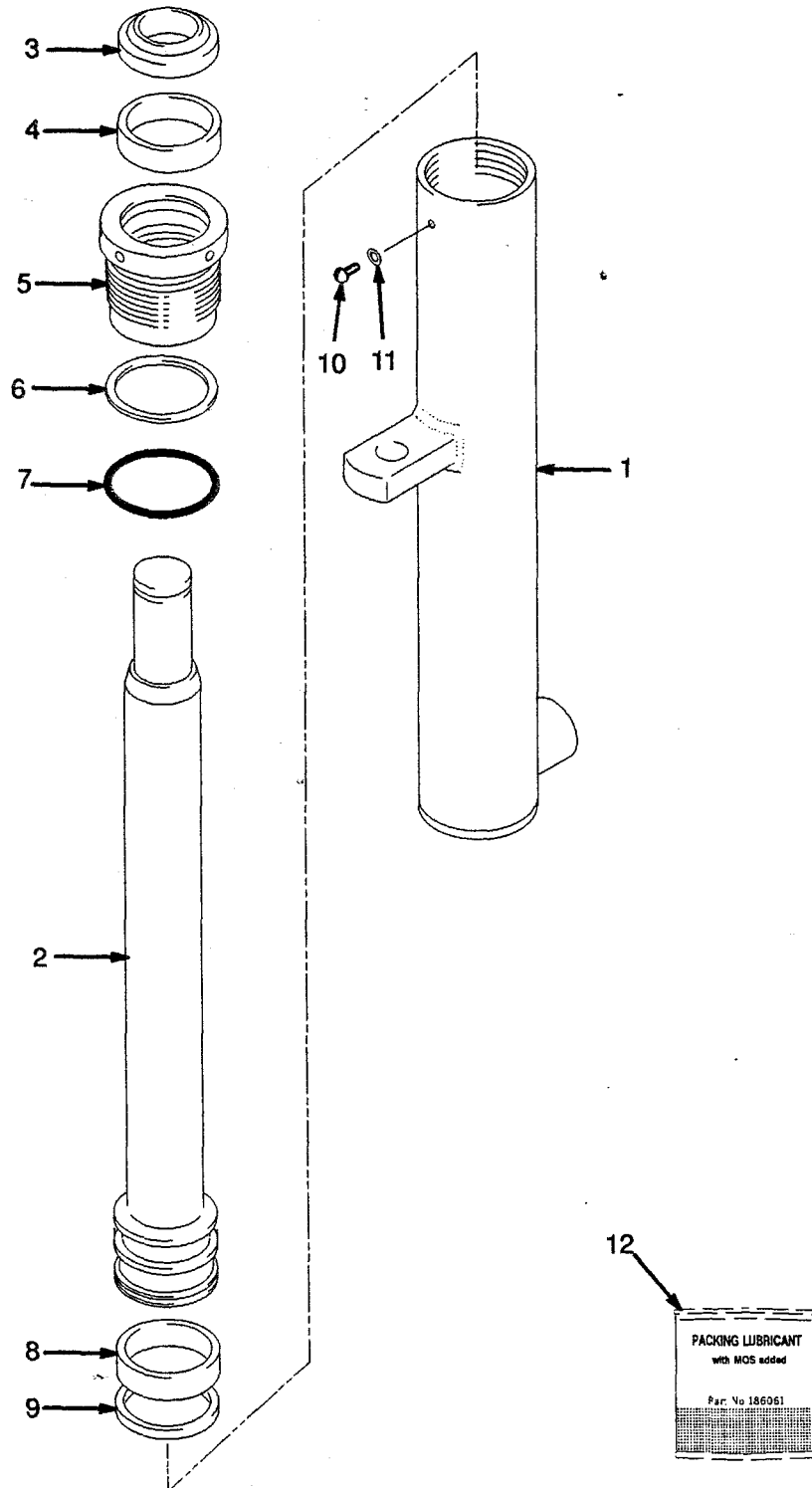
REF NO.	NAME OF PART 1 2 3 4	LIFT HEIGHT TO BOTTOM OF FORKS		
		3048 mm	3248 mm	3848 mm
		PART NO.		
	Mast Group No.	A554-3048	A554-3248	A554-3848
1	Chain	197345	231084	182343
2	Hose	1365306	1365308	1365314

REF	PART NO.	NAME OF PART	QTY	REF	PART NO.	NAME OF PART	QTY
a	.....	Mast Assy .....	1	20	292681	Lockwasher .....	2
1 a	.....	Chain .....	2	21	132861	Hex Head Bolt .....	2
2 a	.....	Hose .....	1	22	178119	Clamp .....	1
3	161003	Nut .....	2	23	239503	Nut .....	2
4	297649	Ring .....	2	24	17197	Fitting .....	1
5	323161	Pin .....	2	24	16484	O-Ring .....	1
6	15200	Split Pin .....	2	25	16882	Fitting .....	1
7 b	320313	Chain Anchor .....	2	26	304526	Circlip .....	2
7 c	1369357	Chain Anchor .....	2	27	1354912	Sheave .....	2
8	1360544	Chain Guard .....	2	28	37752	Circlip .....	2
9	292527	Hex Head Bolt .....	2	29	231020	Bearing .....	1
10	292683	Washer .....	2	30	1354911	Roller .....	1
11	1353546	Guard .....	1	31	.....	Free-Lift Cylinder .....	1
12	302461	Pin .....	2			☐ Figure 153	
13	1344323	Bracket .....	1	32	131358	Circlip .....	1
14	287837	Hex Head Bolt .....	4	33	166112	Clamp .....	1
15	320161	Washer .....	6	34	171350	Chain Lube (400 ml) .....	AR
16	300937	Nut .....	4	35	599737	Chain Wear Scale .....	AR
17	1333243	Flow Valve .....	1				
17	16485	O-Ring .....	1				
18	1337905	Crosshead .....	1				
19	320158	Washer .....	2				

a ☐ Table  
b Last Used on S/N A558B-1584  
c First Used on S/N A558B-1585

## MAIN CYLINDER TWO-STAGE FEL LEFT HAND

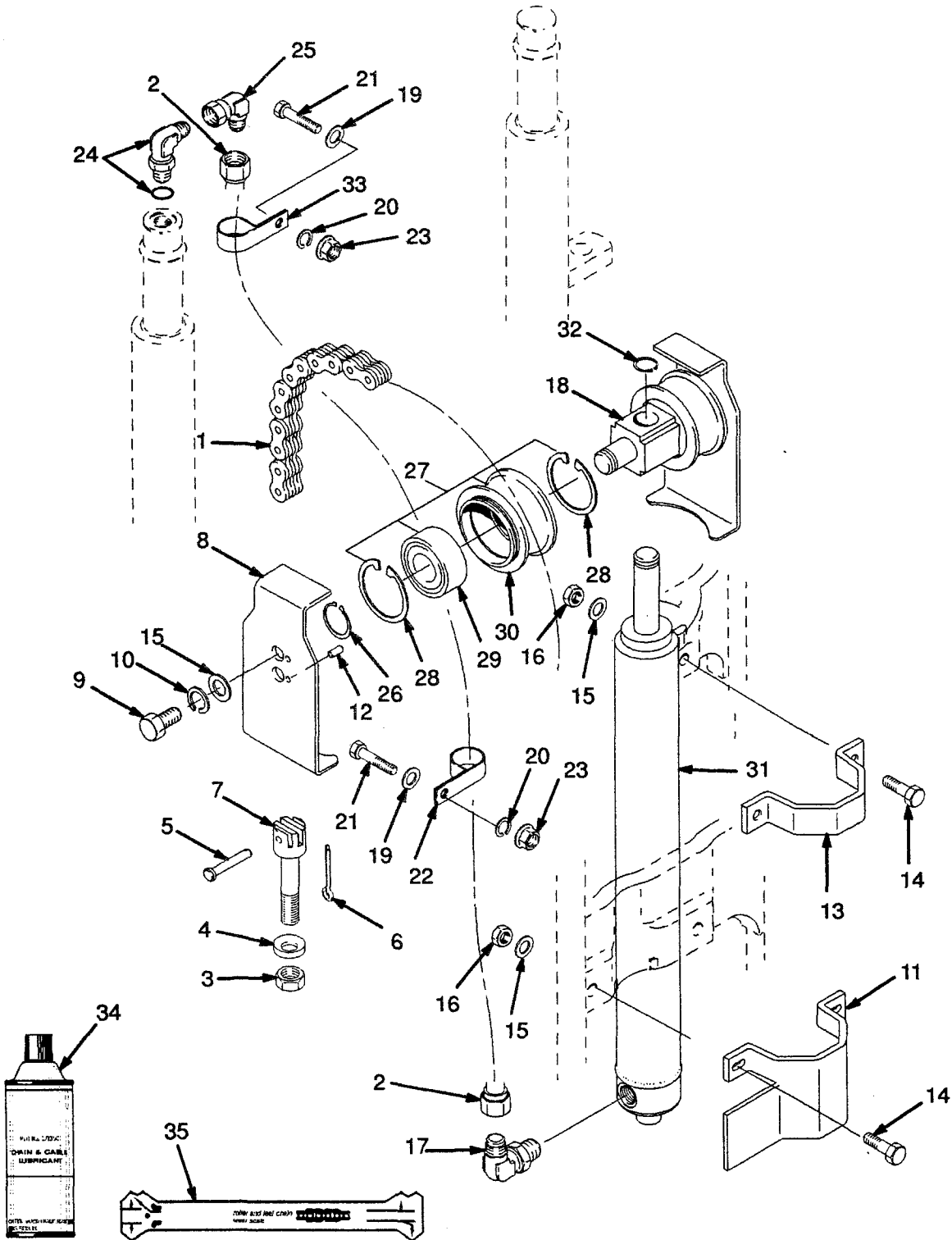
(Figure 151)



**MAIN LIFT  
TWO-STAGE FFL  
FIRST USED ON S/N  
A558B-1671**

REF	PART NO.	NAME OF PART	QTY	REF	PART NO.	NAME OF PART	QTY
1	.....	Lift Cylinder (LH) .....	1	11	1333392	Valve Housing .....	1
		☐ Figure 151		12	292509	Hex Head Bolt .....	2
2	.....	Lift Cylinder (RH) .....	1	13	313828	Nut .....	2
		☐ Figure 152		14	17051	Fitting .....	1
3	292531	Hex Head Bolt .....	2	15	189595	Fitting .....	2
4	296422	Washer .....	4	16	14603	Fitting .....	1
5	323090	Spacer .....	2	16	16486	O-Ring .....	1
6	300937	Nut .....	2	17	16882	Fitting .....	1
7	131358	Circlip .....	3	18	120938	Spring .....	1
8	1333382	Washer .....	2	19	323160	Washer .....	1
9	1354915	Washer (0,25 mm) .....	AR	20	1376100	Hose .....	2
9	1354916	Washer (0,75 mm) .....	AR	21	16560	Fitting .....	1
9	1354917	Washer (1,50 mm) .....	AR	21	16485	O-Ring .....	1
10	323061	Valve .....	1				

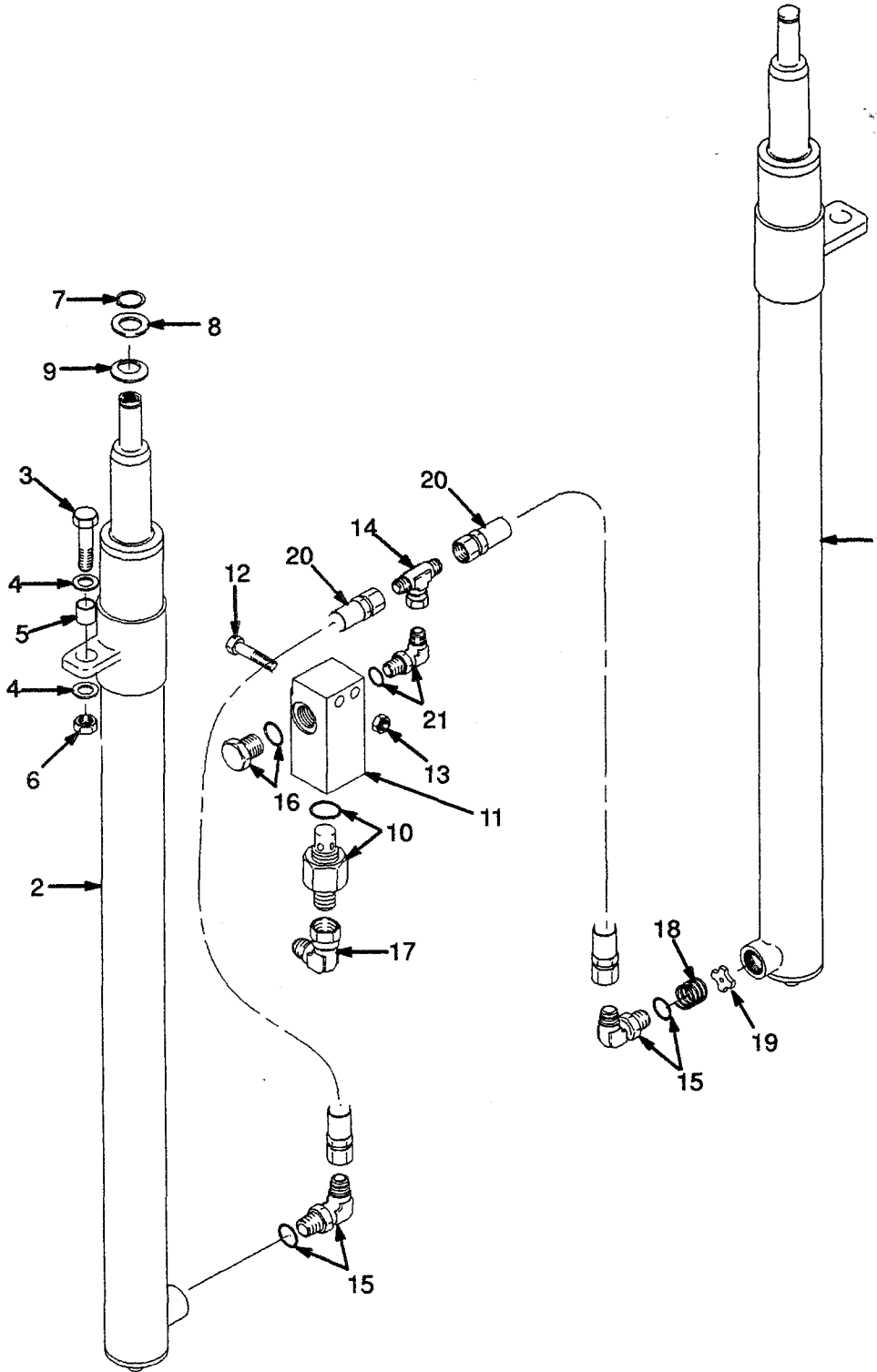
## FREE-LIFT TWO-STAGE FFL (Figure 150)



**MAIN LIFT  
 TWO-STAGE FFL  
 LAST USED ON S/N  
 A558B-1670**

REF	PART NO.	NAME OF PART	QTY	REF	PART NO.	NAME OF PART	QTY
1		Lift Cylinder (LH) .....	1	13	136704	Hex Head Bolt .....	2
		☞ Figure 151		14	313828	Nut .....	2
2		Lift Cylinder (RH) .....	1	15	320157	Washer .....	6
		☞ Figure 152		16	17063	Fitting .....	1
3	292531	Hex Head Bolt .....	2	17	120938	Spring .....	1
4	296422	Washer .....	4	18	323160	Washer .....	1
5	323090	Spacer .....	2	19	189595	Fitting .....	2
6		Nut .....	2	19	16485	O-Ring .....	1
7	131358	Cirdip .....	2	20	14603	Fitting .....	1
8	1333382	Washer .....	2	20	16486	O-Ring .....	1
9	1354915	Washer (0,25 mm) .....	AR	21	16542	Fitting .....	1
9	1354916	Washer (0,75 mm) .....	AR	21	16485	O-Ring .....	1
9	1354917	Washer (1,50 mm) .....	AR	22	1353534	Hose .....	1
10	323061	Valve .....	1	23	1353535	Hose .....	1
11	1333392	Valve Housing .....	1	24	16882	Fitting .....	1
12	1347202	Clamp .....	1				

## MAIN LIFT TWO-STAGE FFL FIRST USED ON S/N A558B-1671 (Figure 149)

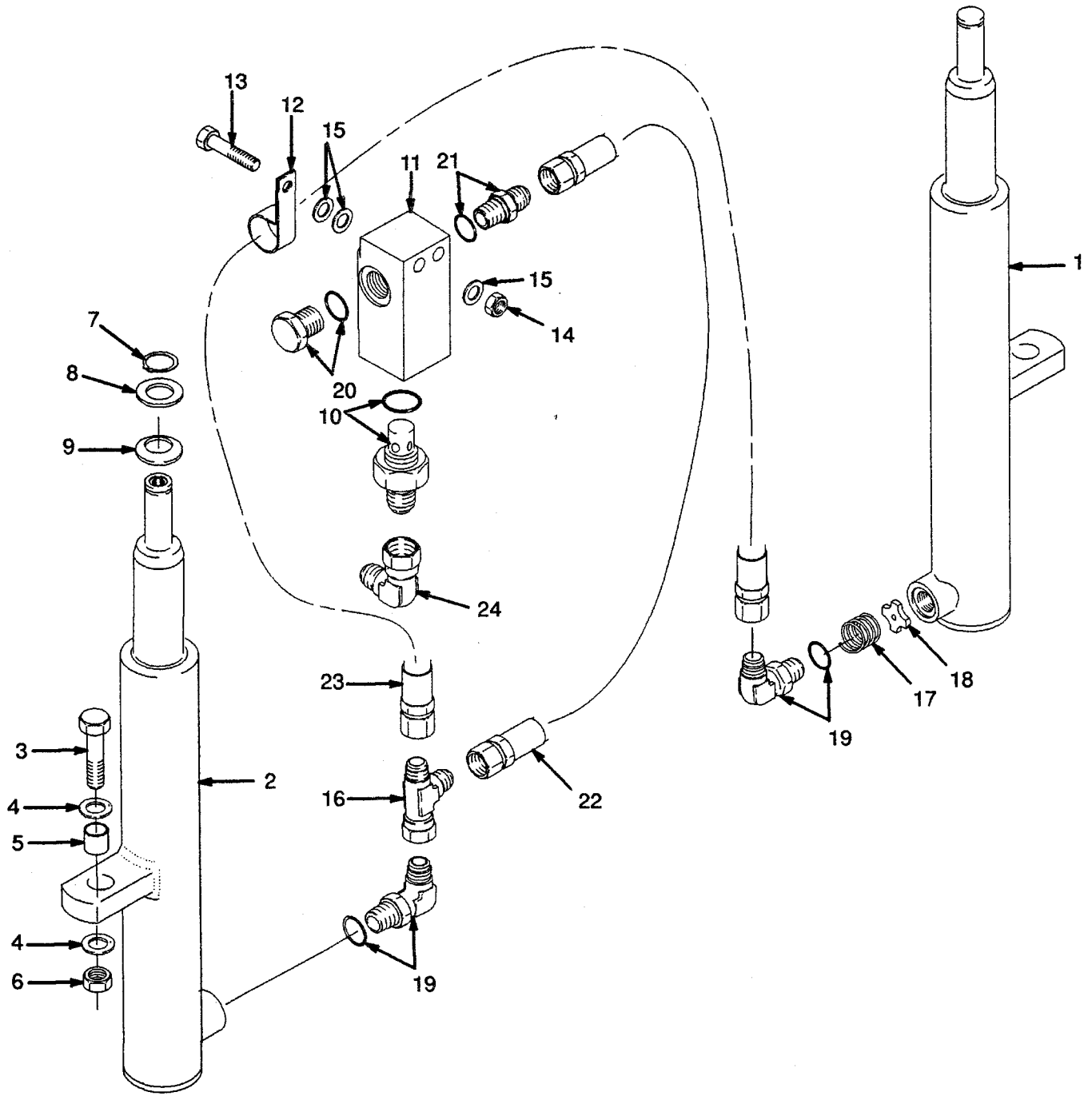


**INNER MAST  
TWO-STAGE FFL**

REF NO.	NAME OF PART 1 2 3 4	LIFT HEIGHT TO BOTTOM OF FORKS		
		3048 mm	3248 mm	3848 mm
		PART NO.		
	Mast Group No.	A554-3048	A554-3248	A554-3848
1	Inner Mast	1353706	1353708	1353714

REF	PART NO.	NAME OF PART	QTY	REF	PART NO.	NAME OF PART	QTY
a	.....	Mast Assy .....	1	3	1353193	Load Roller ("C" 1,52 mm) .....	AF
1	a	..... Inner Mast .....	1	4	58901	Circlip .....	2
2	1345216	Stubshaft .....	2	5	129387	Shim (0,508 mm) .....	AR
3	1353191	Load Roller ("A" Standard) .....	2				
3	1353192	Load Roller ("B" 0,76 mm) .....	AR	a		☞ Table	

## MAIN LIFT TWO-STAGE FFL LAST USED ON S/N A558B-1670 (Figure 148)

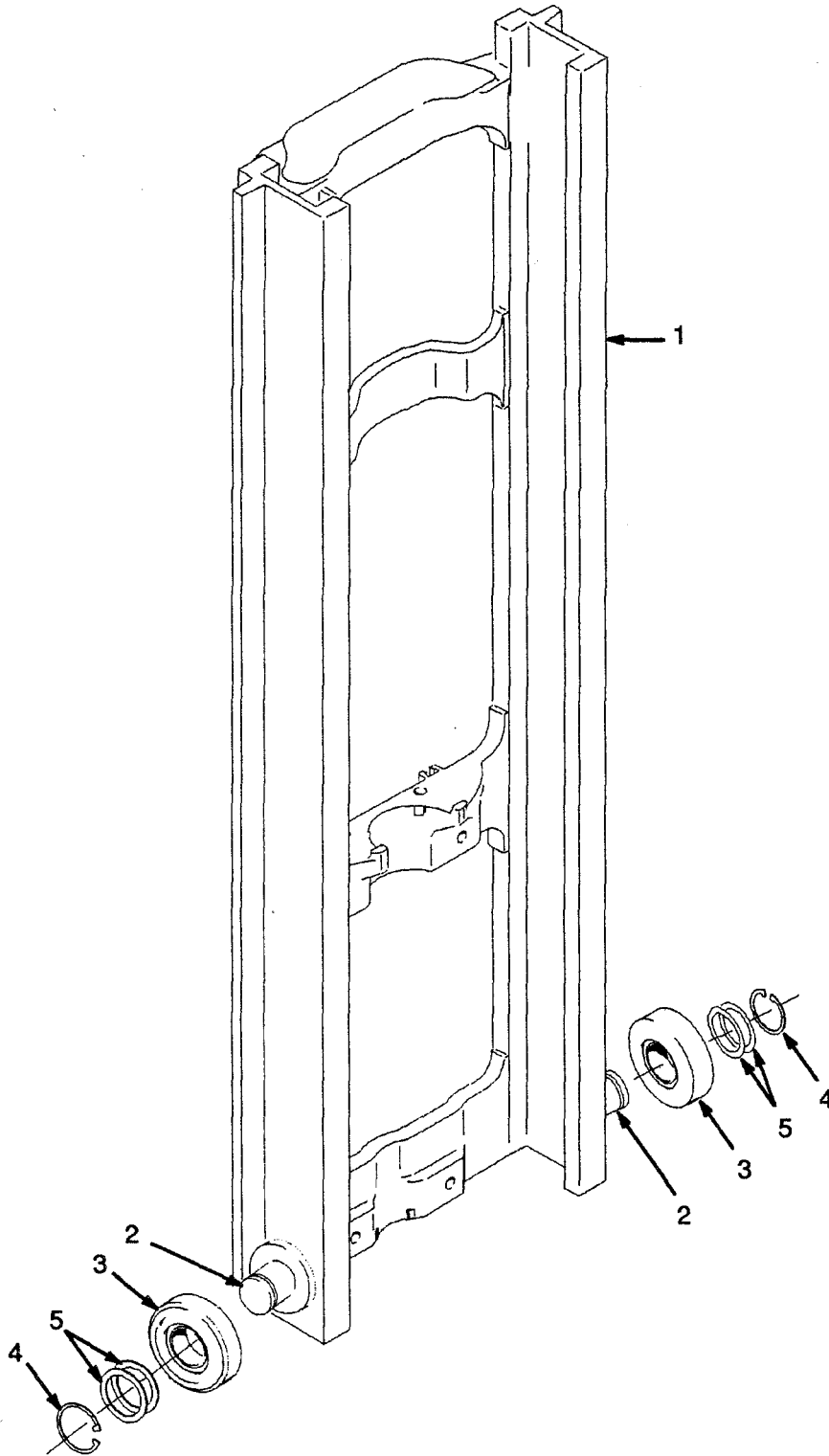


**OUTER MAST  
TWO-STAGE FFL**

REF NO.	NAME OF PART 1 2 3 4	LIFT HEIGHT TO BOTTOM OF FORKS		
		3048 mm	3248 mm	3848 mm
		PART NO.		
Mast Group No.		A554-3048	A554-3248	A554-3848
1	Outer Mast	1353056	1353058	1353064

REF	PART NO.	NAME OF PART	QTY	REF	PART NO.	NAME OF PART	QTY
<sup>a</sup>	.....	Mast Assy .....	1	6	1353192	Load Roller ("B" 0,76 mm) .....	AR
1	<sup>a</sup>	Outer Mast .....	1	6	1353193	Load Roller ("C" 1,32 mm) .....	AR
2	1345216	Stubshaft .....	2	7	58901	Circlip .....	2
3	215212	Bearing Strip .....	2	8	129387	Shim (0,508 mm) .....	AR
4	131716	Shim (0,508 mm) .....	4				
5	104506	O-Ring .....	4	<sup>a</sup>	☞	Table	
6	1353191	Load Roller ("A" Standard) .....	2				

## INNER MAST TWO-STAGE FFL (Figure 147)



**TWO-STAGE FFL**

Carriage  
Two-Stage FFL ..... Page 328

Fork  
Two-Stage FFL ..... Page 338

Free-Lift Cylinder  
Two-Stage FFL ..... Page 326

Free-Lift  
Two-Stage FFL ..... Page 320

Header Hose  
Two-Stage FFL  
Four Function ..... Page 336

Header Hose  
Two-Stage FFL  
Three Function ..... Page 334

Inner Mast  
Two-Stage FFL ..... Page 314

Load Backrest Extension  
Two-Stage FFL ..... Page 330

Main Cylinder  
Two-Stage FFL  
Left Hand ..... Page 322

Main Cylinder  
Two-Stage FFL  
Right Hand ..... Page 324

Main Lift  
Two-Stage FFL  
First Used on S/N A558B-1671 ..... Page 318

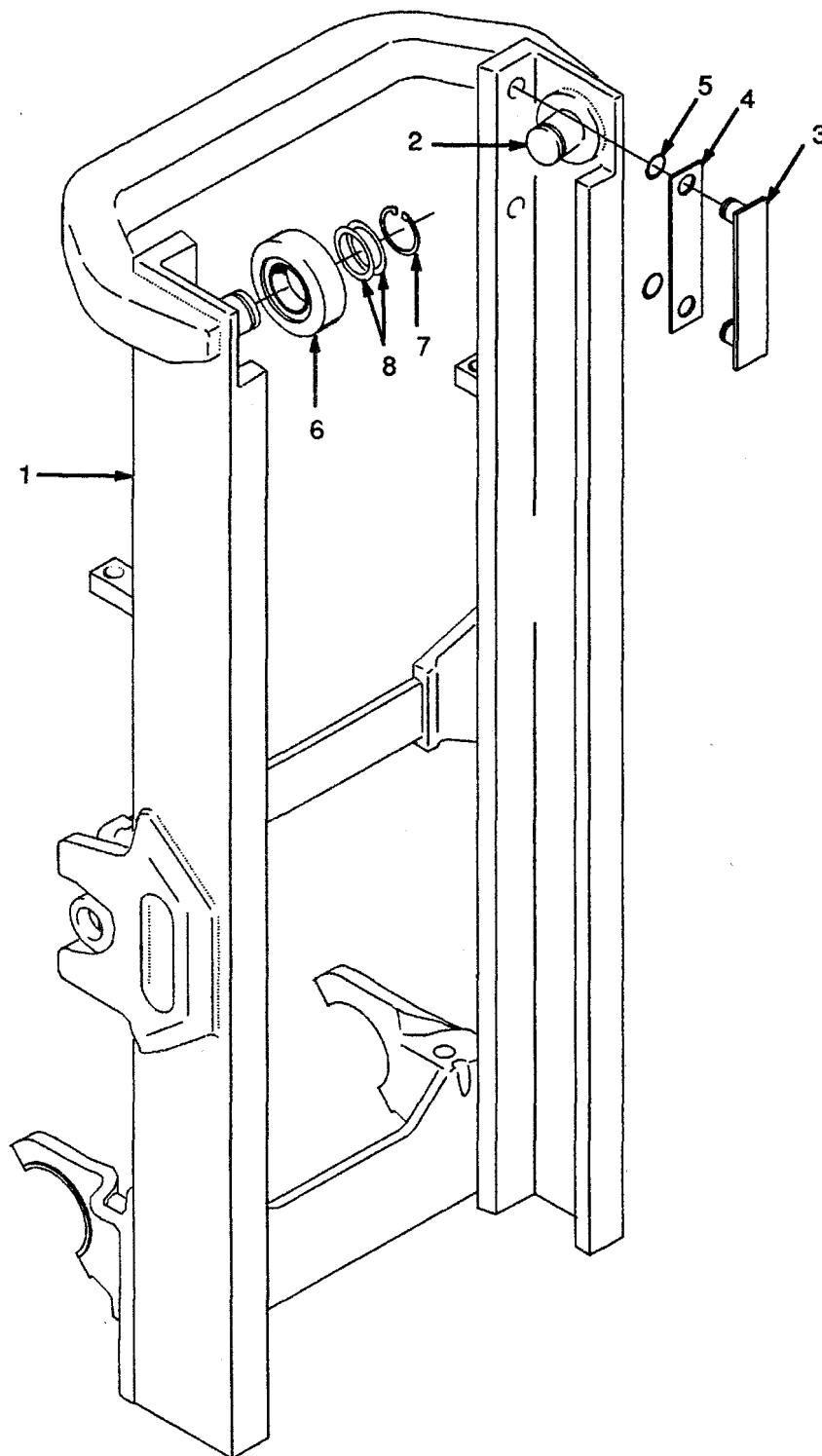
Main Lift  
Two-Stage FFL  
Last Used on S/N A558B-1670 ..... Page 316

Mast Installation  
Two-Stage FFL ..... Page 332

Outer Mast  
Two-Stage FFL ..... Page 312

## OUTER MAST TWO-STAGE FFL

(Figure 146)



**FORK  
THREE STAGE FFL**

REF NO.	NAME OF PART 1 2 3 4	STANDARD TAPER		FULL BOTTOM TAPER	QTY
		PART NO.			
1	Fork	40 mm x 80 mm	40 mm x 100 mm	40 mm x 100 mm	2
	762 mm		1350344		
	900 mm	1338128	1352326		
	914 mm	1350337	1350345	1352332	
	1000 mm	1350341	1352327		
	1067 mm	1350338	1350347	1352333	
	1100 mm	1350342	1352328		
	1150 mm	1338130	1352330		
	1200 mm	1350343	1352329		
	1219 mm	1350339	1350348	1352334	
	1372 mm	1350340	1350349		
	1524 mm		1352325		
2	Latch	369795	369795	369795	1

**NOTE: OTHER FORK DIMENSIONS AVAILABLE ON REQUEST, CONTACT YOUR HYSTER DEALER.**