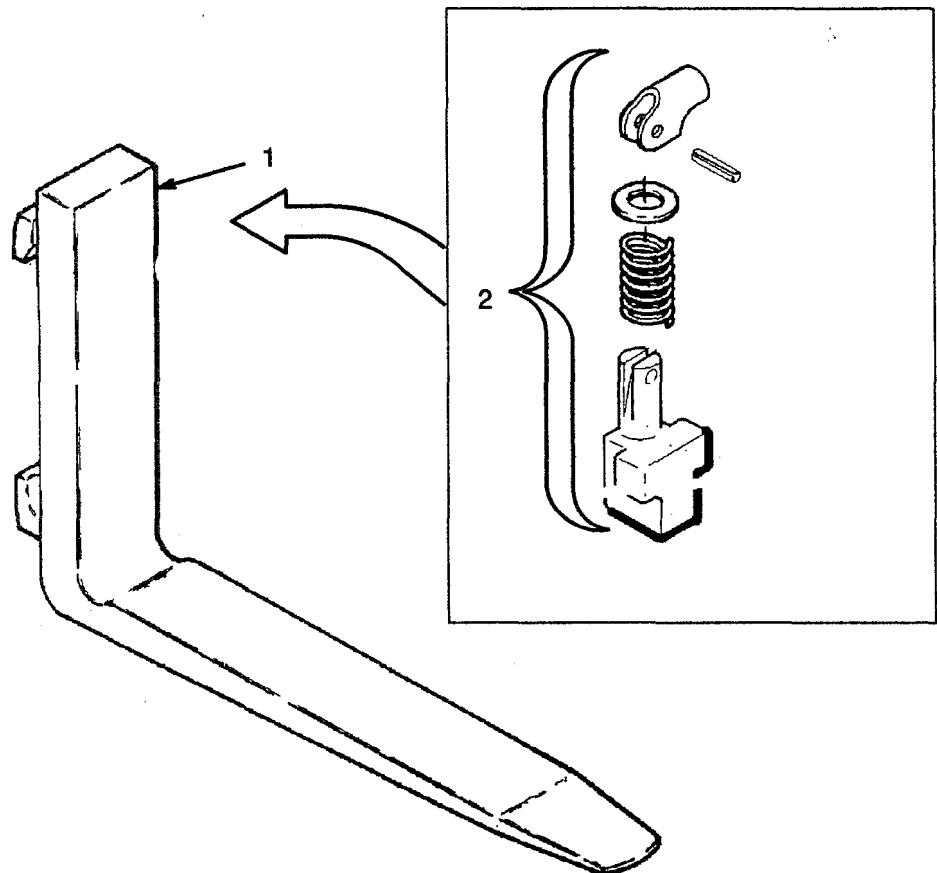


## FORK TWO-STAGE LFL (Figure 130)



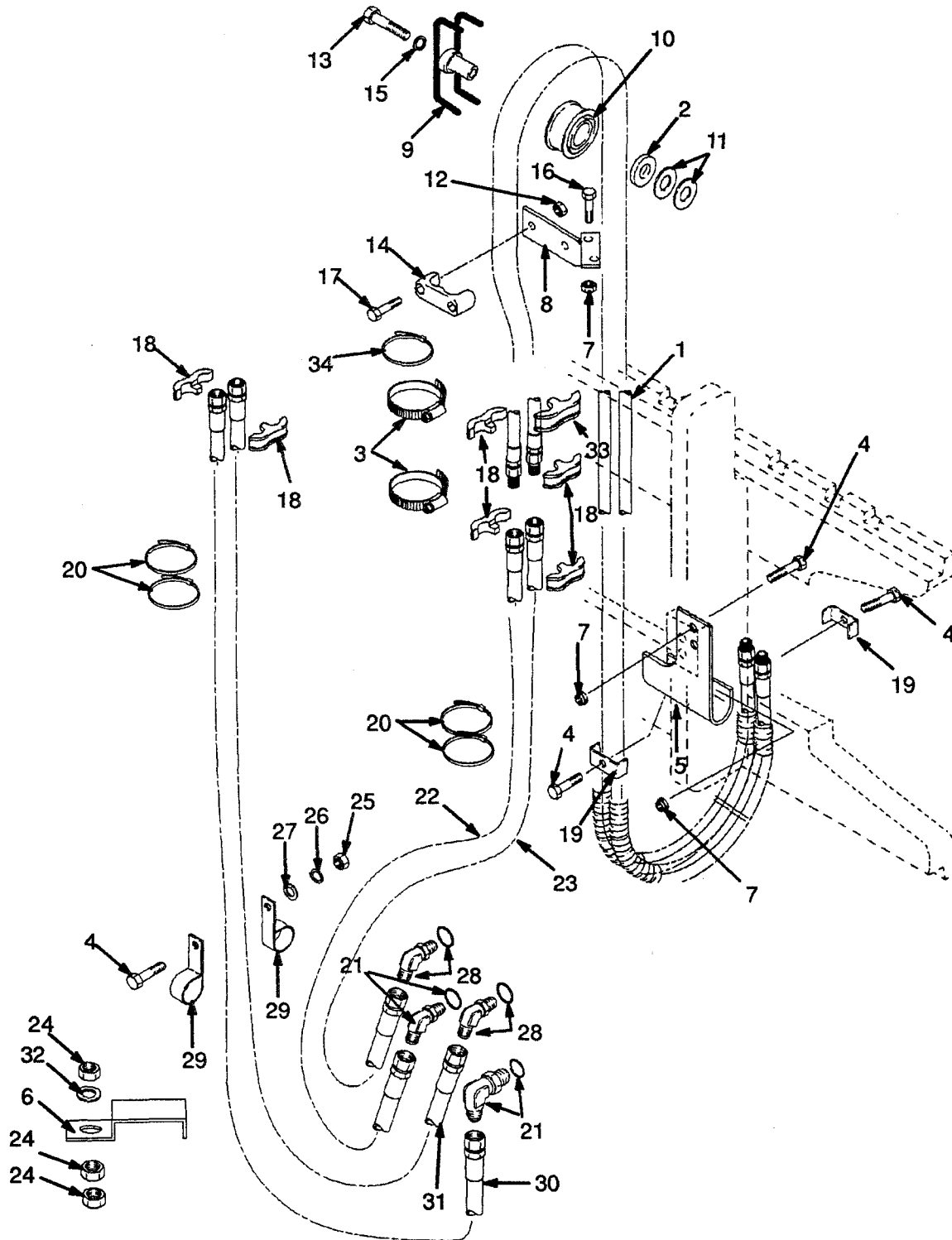
**HEADER HOSE  
TWO-STAGE LFL  
THREE FUNCTION**

REF NO.	NAME OF PART 1 2 3 4	LIFT HEIGHT TO BOTTOM OF FORKS				
		2992 mm	3292 mm	3792 mm	3992 mm	4292 mm
		PART NO.				
	Mast Group No.	A550-2992	A550-3292	A550-3792	A550-3992	A550-4292
1	Hose	1368305	11368308	1368313	1368315	1368318

REF	PART NO.	NAME OF PART	QTY	REF	PART NO.	NAME OF PART	QTY
a		Mast Assy	1	17	1353530	Clamp	4
1	a	Hose	2	18	1345348	Clamp	2
2	1360508	Clamp	2	19	1375574	Strap	2
3	1360549	Spacer	1	20	16558	Fitting	1
4	292508	Hex Head Bolt	4	20	16483	O-Ring	1
5	1345412	Bracket (RH)	1	21	1377371	Hose	1
6	313828	Nut	6	22	1377372	Hose	1
7	1363486	Bracket	1	23	292681	Washer	1
8	1360548	Stubshaft	1	24	2022830	Clamp	1
9	1345194	Sheave	1	25	239503	Nut	3
10	1345190	Washer	2	26	17222	Fitting	1
11	313805	Nut	2	26	16483	O-Ring	1
12	292533	Hex Head Bolt	1	27	1353530	Clamp (3792 mm,3992 mm,4292 mm)	1
13	1360386	Clamp	1	28	1360508	Clamp (3792 mm,3992 mm,4292 mm)	1
14	292683	Washer	1				
15	136704	Hex Head Bolt	2				
16	287816	Hex Head Bolt	2	a		Table	

## HEADER HOSE TWO-STAGE LFL FOUR FUNCTION

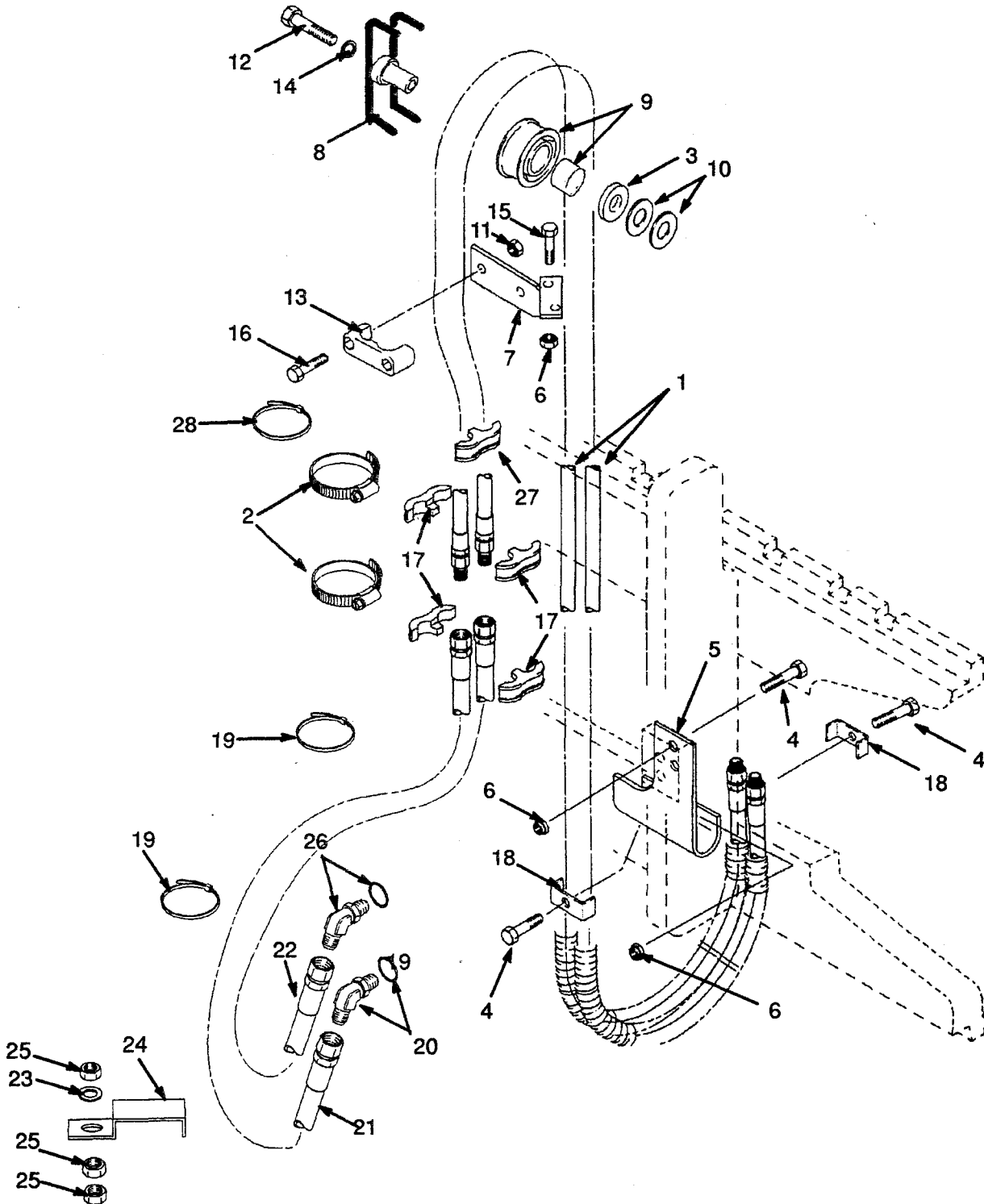
(Figure 129)



**MAST INSTALLATION  
TWO-STAGE LFL**

<u>REF</u>	<u>PART NO.</u>	<u>NAME OF PART</u>	<u>QTY</u>	<u>REF</u>	<u>PART NO.</u>	<u>NAME OF PART</u>	<u>QTY</u>
1	1363260	Rod End (RH) .....	1	11	1370721	Bush .....	2
2	1363261	Rod End (LH) .....	1	12	1370722	Cap .....	2
3	292531	Hex Head Bolt .....	6	13	308117	Pin .....	2
4	292683	Lockwasher .....	6	14	300982	Bush .....	2
5	216877	Nut .....	2	15	320177	Washer .....	2
6	16001	Grease Fitting .....	2	16	1371655	Split Pin .....	2
7	292514	Hex Head Bolt .....	2	17	.....	Tilt Cylinder .....	2
8	1371287	Washer .....	2			☞ Figure 118	
9	1348185	Bush .....	2	18	292682	Lockwasher .....	2
10	1348188	Pin .....	2				

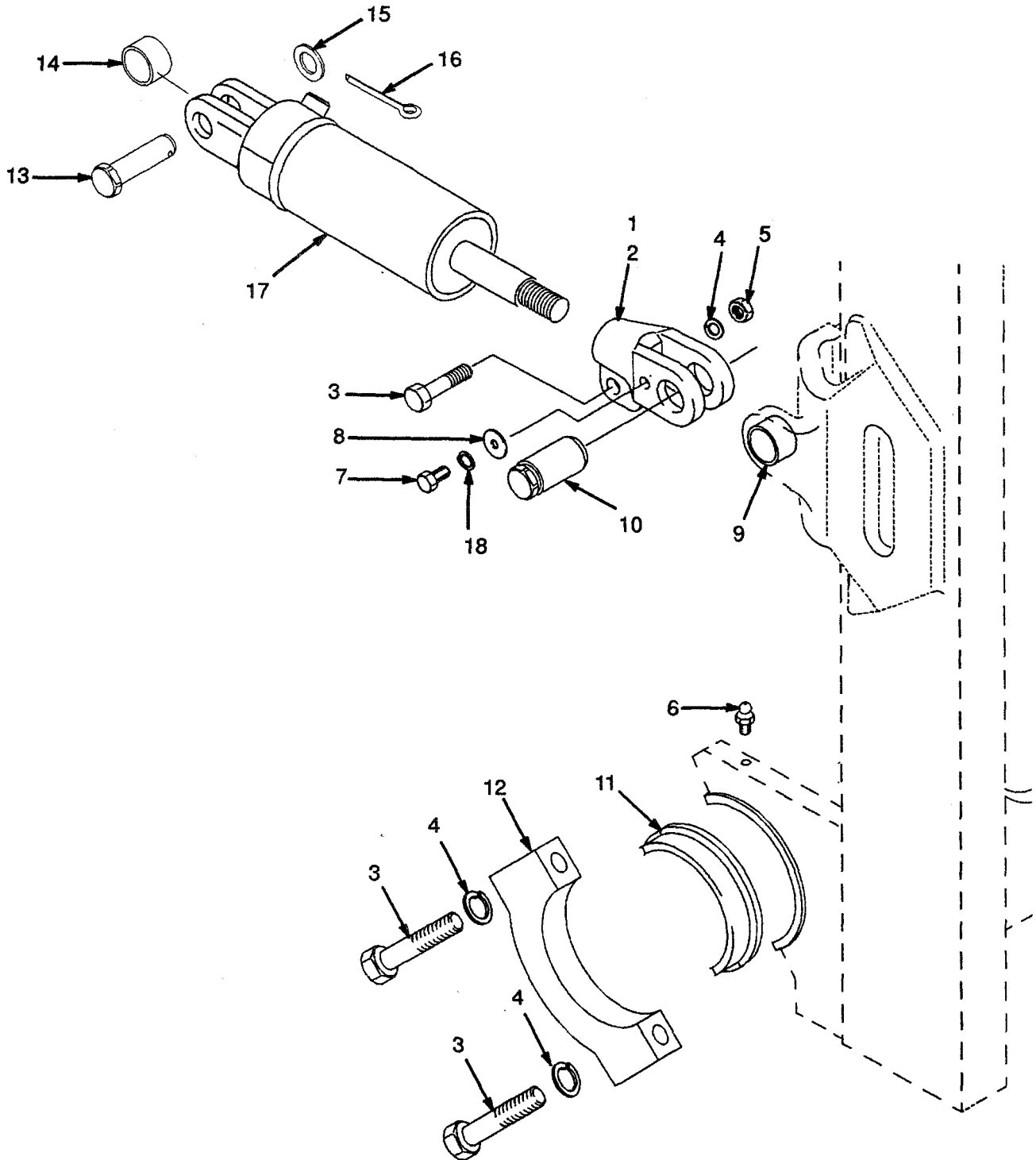
## HEADER HOSE TWO-STAGE LFL THREE FUNCTION (Figure 128)



**LOAD BACKREST EXTENSION  
TWO-STAGE LFL**

<u>REF</u>	<u>PART NO.</u>	<u>NAME OF PART</u>	<u>QTY</u>	<u>REF</u>	<u>PART NO.</u>	<u>NAME OF PART</u>	<u>QTY</u>
1	1349446	Load Backrest Extension .....	1	3	296423	Washer (Optional) .....	4
2	1353533	Hex Head Bolt .....	4	4	300937	Nut .....	4
3	221771	Washer .....	4				

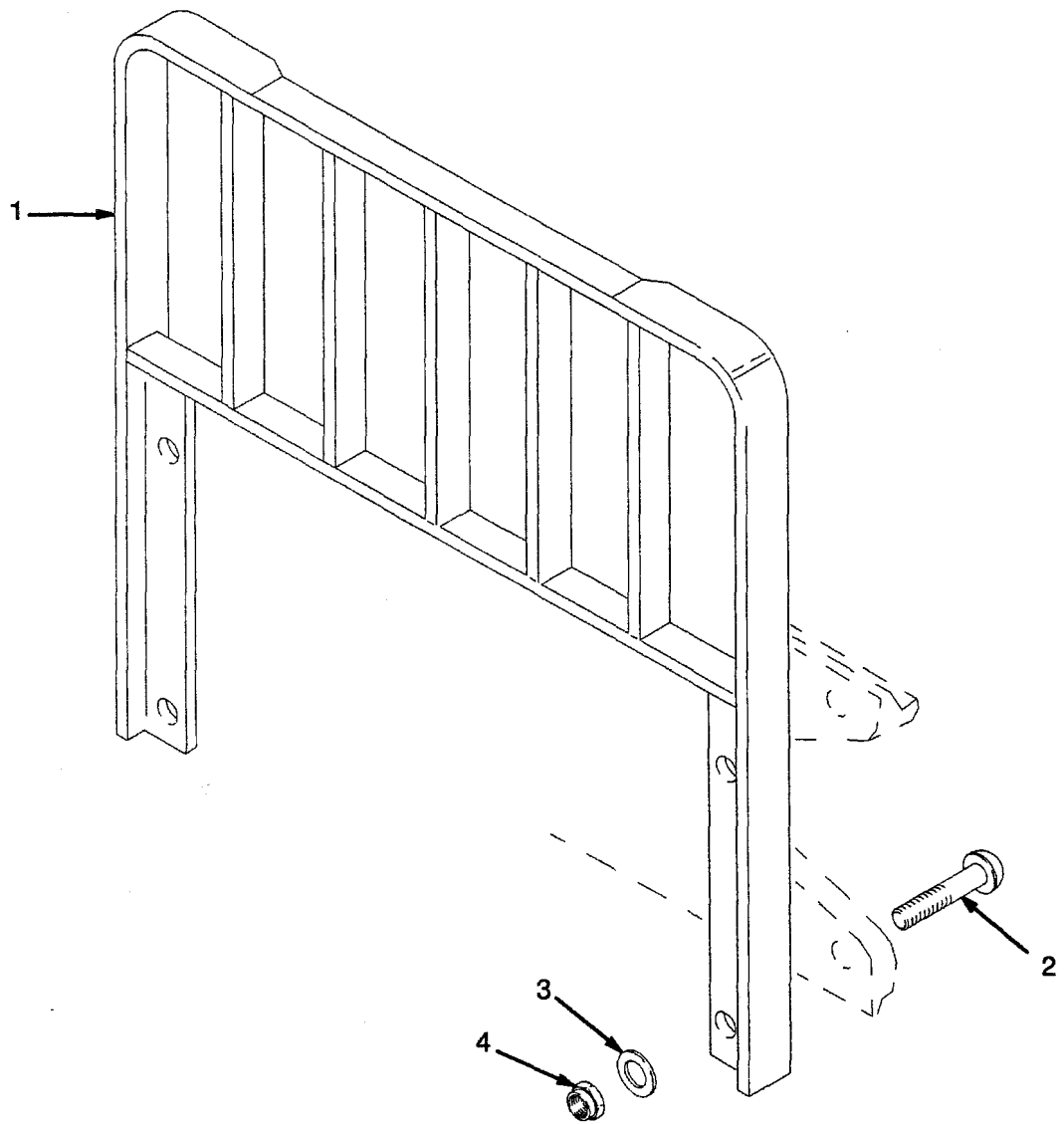
## MAST INSTALLATION TWO-STAGE LFL (Figure 127)



**CARRIAGE  
TWO-STAGE LFL**

<u>REF</u>	<u>PART NO.</u>	<u>NAME OF PART</u>	<u>QTY</u>	<u>REF</u>	<u>PART NO.</u>	<u>NAME OF PART</u>	<u>QTY</u>
	1353329	Carriage .....	1	6	1353192	Load Roller ("B" 0,76 mm) ....	AR
1	1353324	Frame .....	1	6	1353193	Load Roller ("C" 1,52 mm) ....	AR
2	1345216	Stubshaft .....	6	7	1369345	Chain Anchor .....	2
3	58901	Circlip .....	6	8	1353408	Pin .....	2
4	129387	Shim .....	AR	9	131358	Circlip .....	4
5	366115	Spacer .....	2	10	323161	Pin .....	2
6	1353191	Load Roller ("A" Standard) .....	6	11	15200	Split Pin .....	2

## LOAD BACKREST EXTENSION TWO-STAGE LFL (Figure 126)



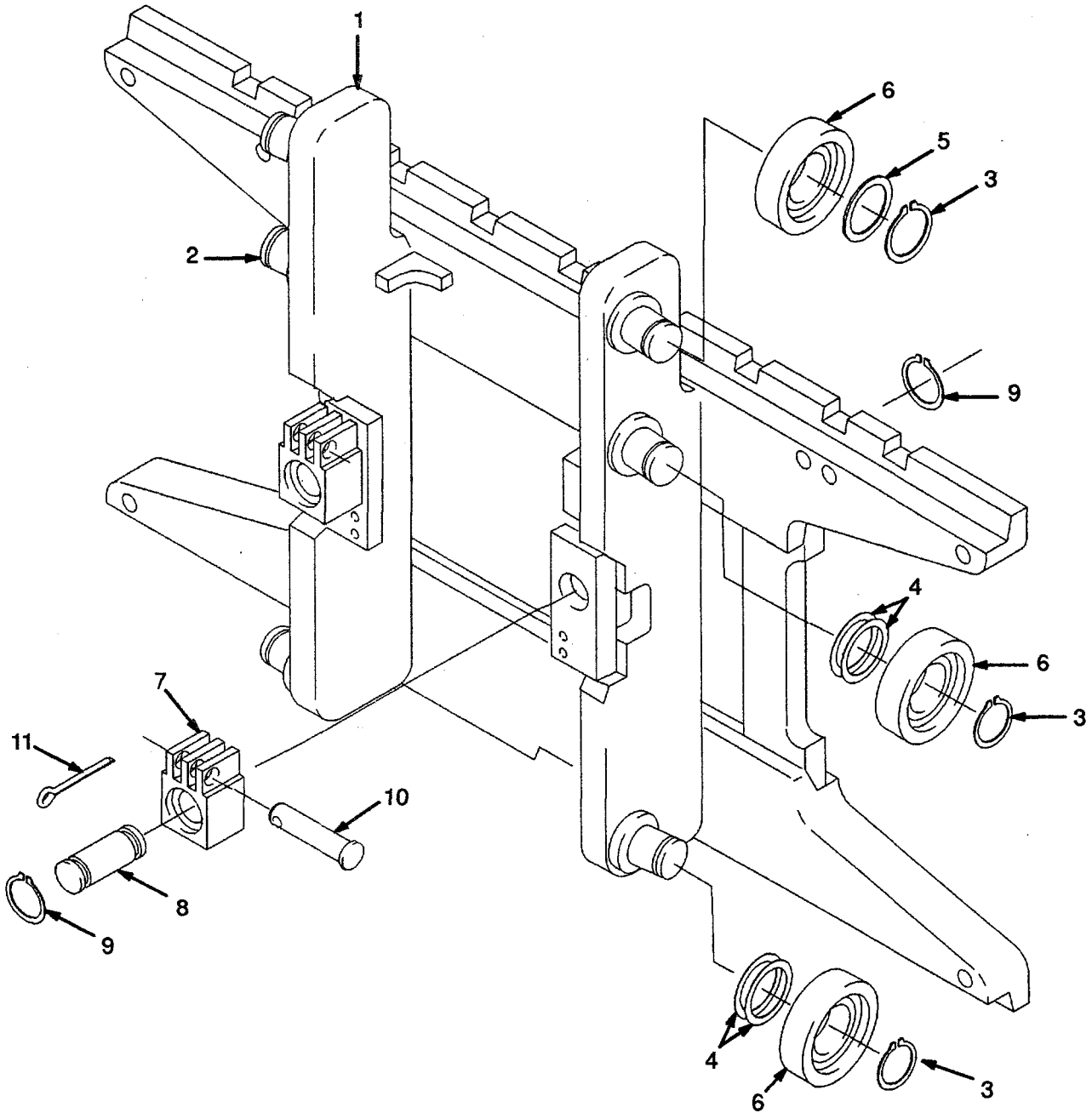
**LIFT CYLINDER  
TWO-STAGE LFL  
RIGHT HAND**

REF NO.	NAME OF PART 1 2 3 4	LIFT HEIGHT TO BOTTOM OF FORKS				
		2992 mm	3292 mm	3792 mm	3992 mm	4292 mm
		PART NO.				
	Group No.	8601656	8601659	8601664	8601666	8601669
	Lift Cylinder	1361358	1361376	1362531	1362543	1362561
1	Shell	1361359	1361377	1362532	1362544	1362562
2	Rod	1361356	1361374	1362529	1362541	1362559
4	Spacer	-	-	-	1355189	1355189

REF	PART NO.	NAME OF PART	QTY	REF	PART NO.	NAME OF PART	QTY
a	....	Group No. ....	..	10	b 1356749	Seal .....	1
a	....	Lift Cylinder (RH) .....	1	11	b 55407	O-Ring .....	1
1	a	Shell .....	1	12	b 330692	Seal .....	1
2	a	Rod .....	1	13	b 322824	Back-Up Ring .....	2
3	1371653	Gland .....	1	14	b 1362871	Wear Ring .....	1
4	a	Spacer .....	1	15	b 322902	Wear Ring .....	1
5	257913	Check Valve .....	1	16	186061	Packing Lube .....	AR
6	297531	Washer .....	1				
7	187388	Circlip .....	1	a	☞ Table		
8	39348	O-Ring .....	1	b	Included In Seal Kit 1360140		
9	b 1319668	Wiper .....	1				

## CARRIAGE TWO-STAGE LFL

(Figure 125)

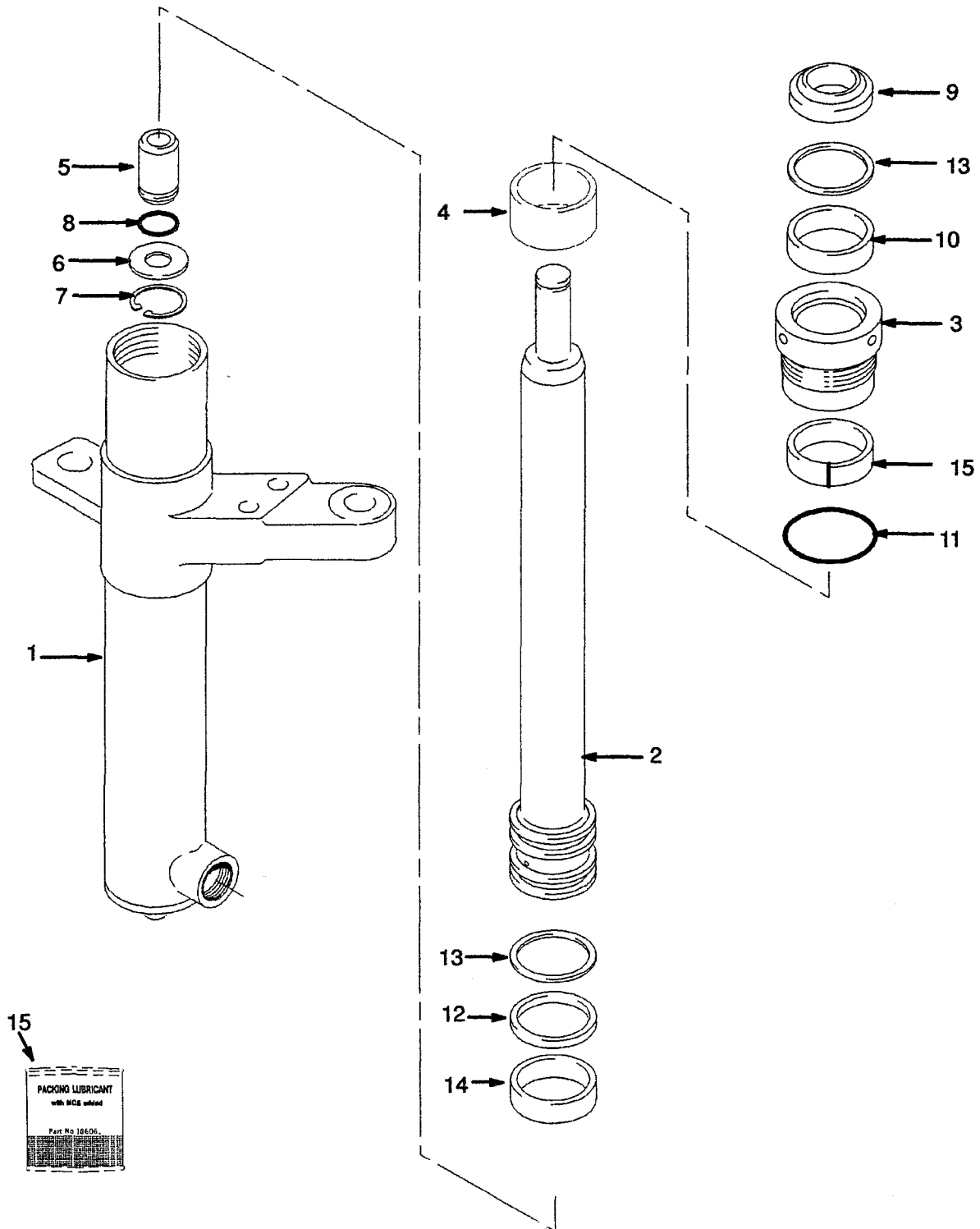


**LIFT CYLINDER  
TWO-STAGE LFL  
LEFT HAND**

REF NO.	NAME OF PART 1 2 3 4	LIFT HEIGHT TO BOTTOM OF FORKS				
		2992 mm	3292 mm	3792 mm	3992 mm	4292 mm
		PART NO.				
	Group No.	8601606	8601609	8601614	8601616	8601619
	Lift Cylinder	1361354	1361372	1362527	1362539	1362557
1	Shell	1361355	1361373	1362528	1362540	1362558
2	Rod	1361356	1361374	1362529	1362541	1362559
4	Spacer	-	-	-	1355189	1355189

REF	PART NO.	NAME OF PART	QTY	REF	PART NO.	NAME OF PART	QTY
a		Group No.	1	10 b	1356749	Seal	1
a		Lift Cylinder (LH)	1	11 b	55407	O-Ring	1
1 a		Shell	1	12 b	330692	Seal	1
2 a		Rod	1	13 b	322824	Back-Up Ring	1
3	1371653	Gland	1	14 b	1362871	Wear Ring	1
4 a		Spacer	1	15 b	322902	Wear Ring	1
5	257913	Check Valve	1	16	186061	Packing Lube	AR
6	297531	Washer	1				
7	187388	Cirdip	1	a		Table	
8	39348	O-Ring	1	b		Included In Seal Kit 1360140	
9 b	1319668	Wiper	1				

## LIFT CYLINDER TWO-STAGE LFL RIGHT HAND (Figure 124)

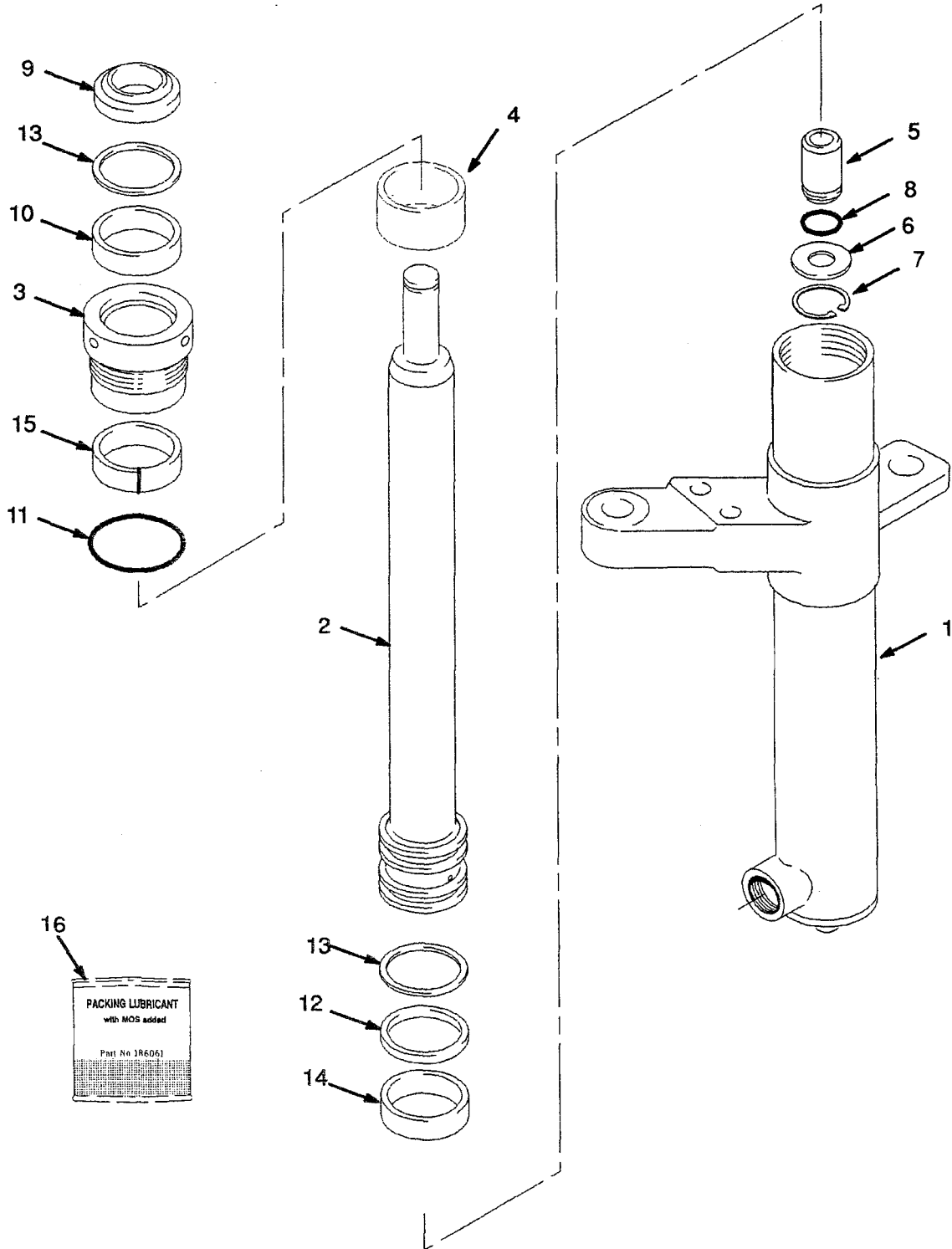


**LIFT**  
**FIRST USED ON S/N A550B-2250**  
**TWO-STAGE LFL**

REF NO.	NAME OF PART 1 2 3 4	LIFT HEIGHT TO BOTTOM OF FORKS				
		2992 mm	3292 mm	3792 mm	3992 mm	4292 mm
		PART NO.				
	Mast Group No.	A550-2992	A550-3292	A550-3792	A550-3992	A550-4292
1	Lift Chain	180057	223389	135588	335041	246994

REF	PART NO.	NAME OF PART	QTY	REF	PART NO.	NAME OF PART	QTY
	<sup>a</sup> . . . .	Mast Assy . . . . .	1	17	16485	O-Ring . . . . .	1
1	. . . .	Lift Cylinder (LH) . . . . .	1	18	14603	Fitting . . . . .	1
		☞ Figure 123		18	16486	O-Ring . . . . .	1
2	. . . .	Lift Cylinder (RH) . . . . .	1	19	131358	Circlip . . . . .	2
		☞ Figure 124		20	1333382	Washer . . . . .	2
3	161003	Nut . . . . .	2	21	1354915	Washer (0,25 mm) . . . . .	AR
4	297649	Ring . . . . .	2	21	1354916	Washer (0,75 mm) . . . . .	AR
5	292531	Hex Head Bolt . . . . .	2	21	1354917	Washer (1.50 mm) . . . . .	AR
6	296422	Washer . . . . .	4	22	323161	Pin . . . . .	2
7	323090	Spacer . . . . .	2	23	15200	Split Pin . . . . .	2
8	300937	Nut . . . . .	2	24 <sup>c</sup>	1369357	Chain Anchor . . . . .	2
9	16560	Fitting . . . . .	1	24 <sup>b</sup>	320313	Chain Anchor . . . . .	2
9	16485	O-Ring . . . . .	1	25 <sup>a</sup>	. . . .	Chain . . . . .	2
10	323061	Valve . . . . .	1	26 <sup>e</sup>	1376100	Hose . . . . .	2
10	16982	O-Ring . . . . .	1	27	16882	Fitting . . . . .	1
11	1333392	Valve Housing . . . . .	1	28	599737	Chain Wear Scale . . . . .	AR
12	292509	Hex Head Bolt . . . . .	2	29	171350	Chain Lube (400 ml) . . . . .	AR
13	313828	Nut . . . . .	2				
14	17051	Fitting . . . . .	1				
15	120938	Spring . . . . .	2	<sup>a</sup>	☞ Table		
16	323160	Washer . . . . .	2	<sup>b</sup>	Last Used on S/N A550B-1949		
17	189595	Fitting . . . . .	2	<sup>c</sup>	First Used on S/N A550B-1950		

## LIFT CYLINDER TWO-STAGE LFL LEFT HAND (Figure 123)



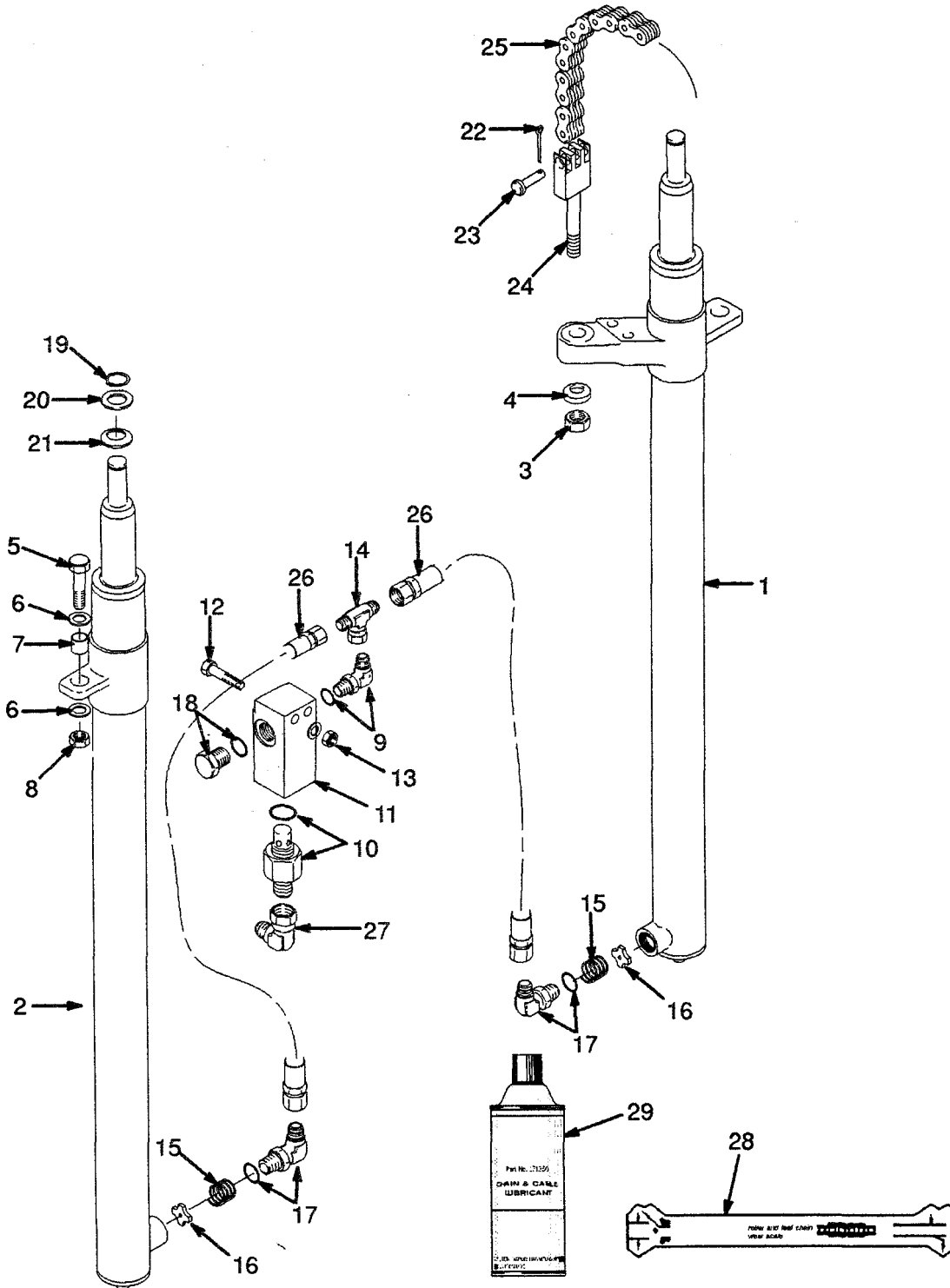
**LIFT  
TWO-STAGE LFL  
LAST USED ON S/N  
A550B-2249**

REF NO.	NAME OF PART 1 2 3 4	LIFT HEIGHT TO BOTTOM OF FORKS				
		2992 mm	3292 mm	3792 mm	4292 mm	4792 mm
		PART NO.				
	Mast Group No.	A550-2892	A550-3292	A550-3792	A550-4292	A550-4792
1	Lift Chain	182343	337174	135588	214444	129358

REF	PART NO.	NAME OF PART	QTY	REF	PART NO.	NAME OF PART	QTY
<sup>a</sup>	.....	Mast Assy .....	1	18	323160	Washer .....	2
1	.....	Lift Cylinder (LH) .....	1	19	189595	Fitting .....	2
		☞ Figure 123		19	16485	O-Ring .....	1
2	.....	Lift Cylinder (RH) .....	1	20	14603	Fitting .....	1
		☞ Figure 124		20	16486	O-Ring .....	1
3	161003	Nut .....	2	21	131358	Circlip .....	2
4	297649	Ring .....	2	22	1333382	Washer .....	
5	292531	Hex Head Bolt .....	2	23	1354915	Washer (0,25 mm) .....	A
6	296422	Washer .....	4	23	1354916	Washer (0,75 mm) .....	A
7	323090	Spacer .....	2	23	1354917	Washer (1,50 mm) .....	A
8	300937	Nut .....	2	24	323161	Pin .....	
9	16542	Fitting .....	1	25	15200	Split Pin .....	2
9	16485	O-Ring .....	1	26	320313	Chain Anchor .....	2
10	323061	Valve .....	1	27	<sup>a</sup> .....	Chain .....	2
10	16982	O-Ring .....	1	28	1353535	Hose .....	1
11	1333392	Valve Housing .....	1	29	1353534	Hose .....	1
12	1347202	Clamp .....	1	30	16882	Fitting .....	1
13	136704	Hex Head Bolt .....	2	31	171350	Chain Lube (400 ml) .....	AR
14	313828	Nut .....	2	32	599737	Chain Wear Scale .....	AR
15	17063	Fitting .....	1				
16	320157	Washer .....	6				
17	120938	Spring .....	2				

<sup>a</sup> ☞ Table

## LIFT FIRST USED ON S/N A550B-2250 TWO-STAGE LFL (Figure 122)

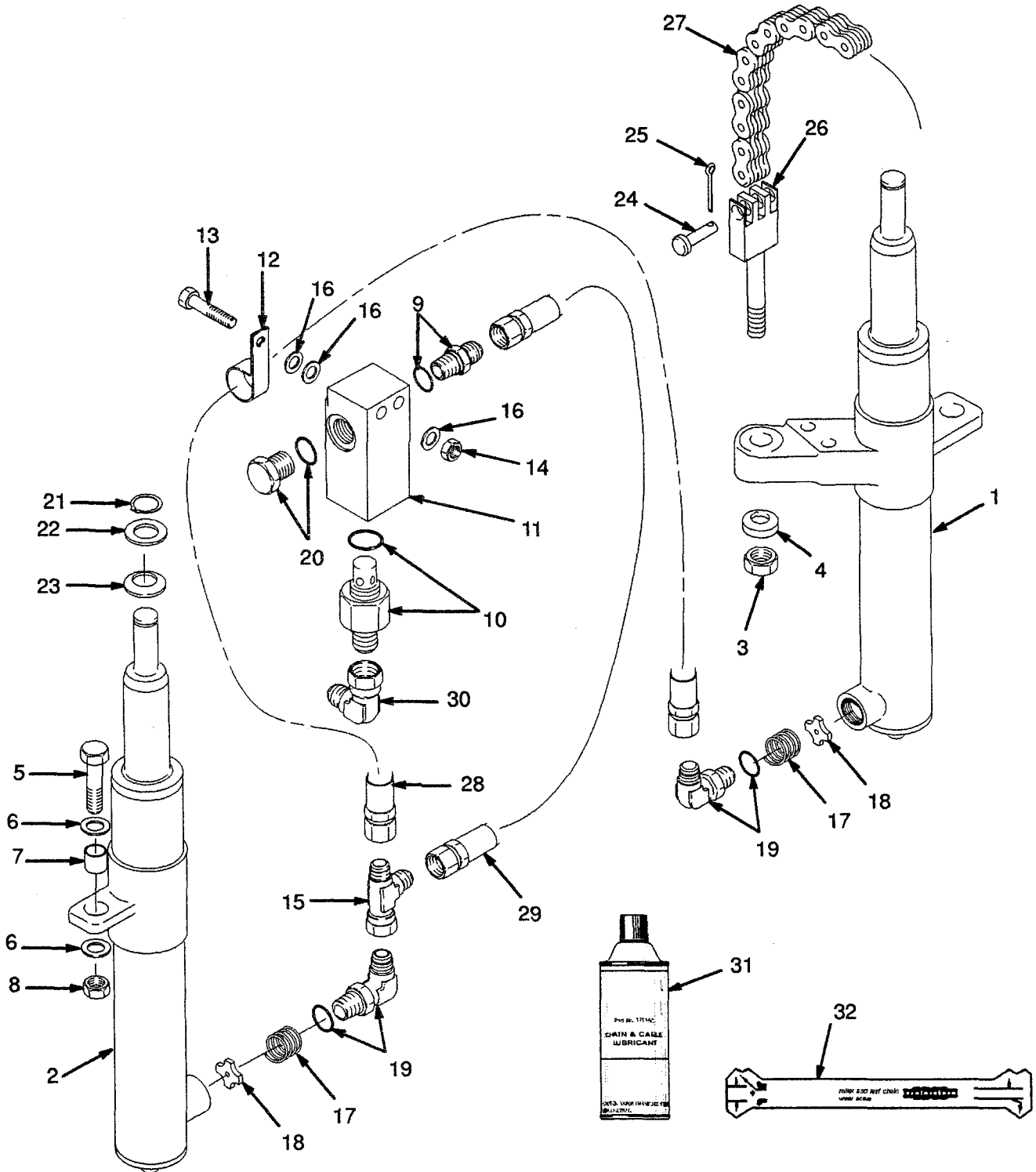


**INNER MAST  
TWO-STAGE LFL**

REF NO.	NAME OF PART 1 2 3 4	LIFT HEIGHT TO BOTTOM OF FORKS				
		2992 mm	3292 mm	3792 mm	3992 mm	4292 mm
		PART NO.				
	Mast Group No.	A550-2992	A550-3292	A550-3792	A550-3992	A550-4292
1	Inner Mast	1349256	1349259	1349264	1349266	1349269

REF	PART NO.	NAME OF PART	QTY	REF	PART NO.	NAME OF PART	QTY
<sup>a</sup>		Mast Assy	1	6	304526	Circlip	2
1	<sup>a</sup>	Inner Mast	1	7	1345183	Sheave	2
2	1345216	Stubshaft	2	8	1345181	Roller	1
3	1353191	Load Roller ("A" Standard)	2	9	231020	Bearing	1
3	1353192	Load Roller ("B" 0,76 mm)	AR	10	37752	Circlip	2
3	1353193	Load Roller ("C" 1,52 mm)	AR				
4	58901	Circlip	2	<sup>a</sup>	Table		
5	129387	Shim (0,508 mm)	AR				

## LIFT TWO-STAGE LFL LAST USED ON S/N A550B-2249 (Figure 121)

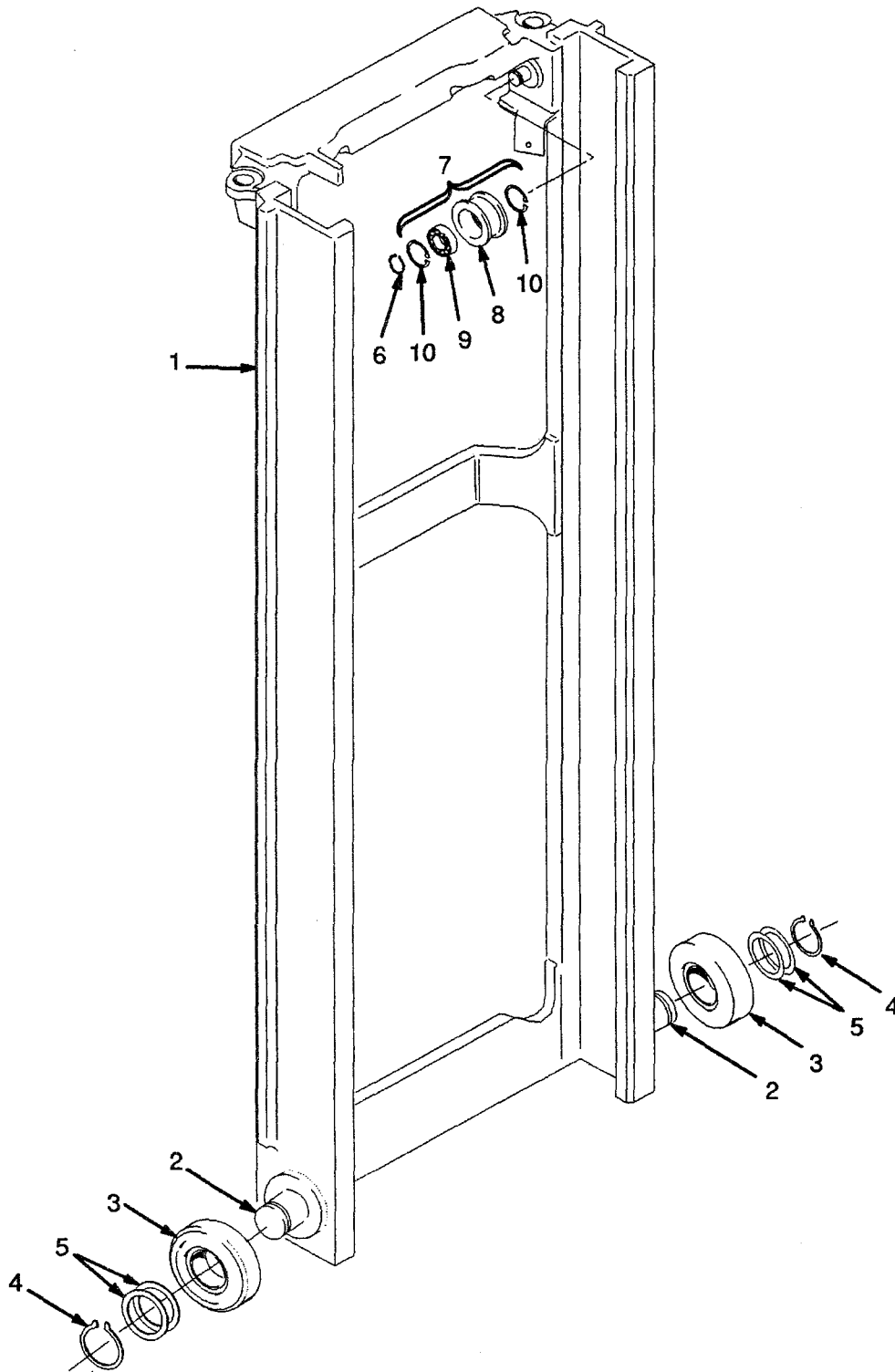


**OUTER MAST  
TWO-STAGE LFL**

REF NO.	NAME OF PART 1 2 3 4	LIFT HEIGHT TO BOTTOM OF FORKS				
		2992 mm	3292 mm	3792 mm	3992 mm	4292 mm
		PART NO.				
	Mast Group No.	A550-2992	A550-3292	A550-37992	A550-3992	A550-4292
1	Outer Mast	1353056	1353059	1353064	1353067	1353070

REF	PART NO.	NAME OF PART	QTY	REF	PART NO.	NAME OF PART	QTY
a		Mast Assy	1	6	1353192	Load Roller ('B' 0,76 mm)	AR
1	a	Outer Mast	1	6	1353193	Load Roller ("C" 1,52 mm)	AR
2	1345216	Stubshaft	2	7	58901	Circlip	2
3	215212	Bearing Strip	2	8	129387	Shim (0,508 mm)	AR
4	131716	Shim (0,508 mm)	4				
5	104506	O-Ring	4	a		Table	
6	1353191	Load Roller ('A' Standard)	2				

## INNER MAST TWO-STAGE LFL (Figure 120)



## TWO-STAGE LFL

Carriage	
Two-Stage LFL .....	Page 266
Fork	
Two-Stage LFL .....	Page 276
Header Hose	
Two-Stage LFL	
Four Function .....	Page 274
Header Hose	
Two-Stage LFL	
Three Function .....	Page 272
Inner Mast	
Two-Stage LFL .....	Page 256
Lift Cylinder	
Two-Stage LFL	
Left Hand .....	Page 262
Lift Cylinder	
Two-Stage LFL	
Right Hand .....	Page 264
Lift	
First Used On S/N A550B-2250	
Two-Stage LFL .....	Page 260
Lift	
Two-Stage LFL	
Last Used on S/N A550B-2249 .....	Page 258
Load Backrest Extension	
Two-Stage LFL .....	Page 268
Mast Installation	
Two-Stage LFL .....	Page 270
Outer Mast	
Two-Stage LFL .....	Page 254

## OUTER MAST TWO-STAGE LFL (Figure 119)

