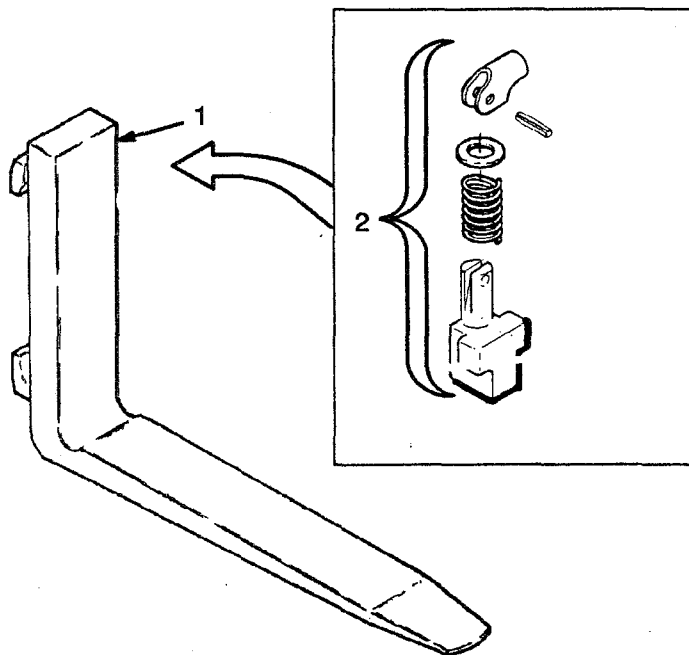


## FORK THREE STAGE FFL (Figure 145)



**HEADER HOSE  
THREE STAGE FFL  
THREE FUNCTION**

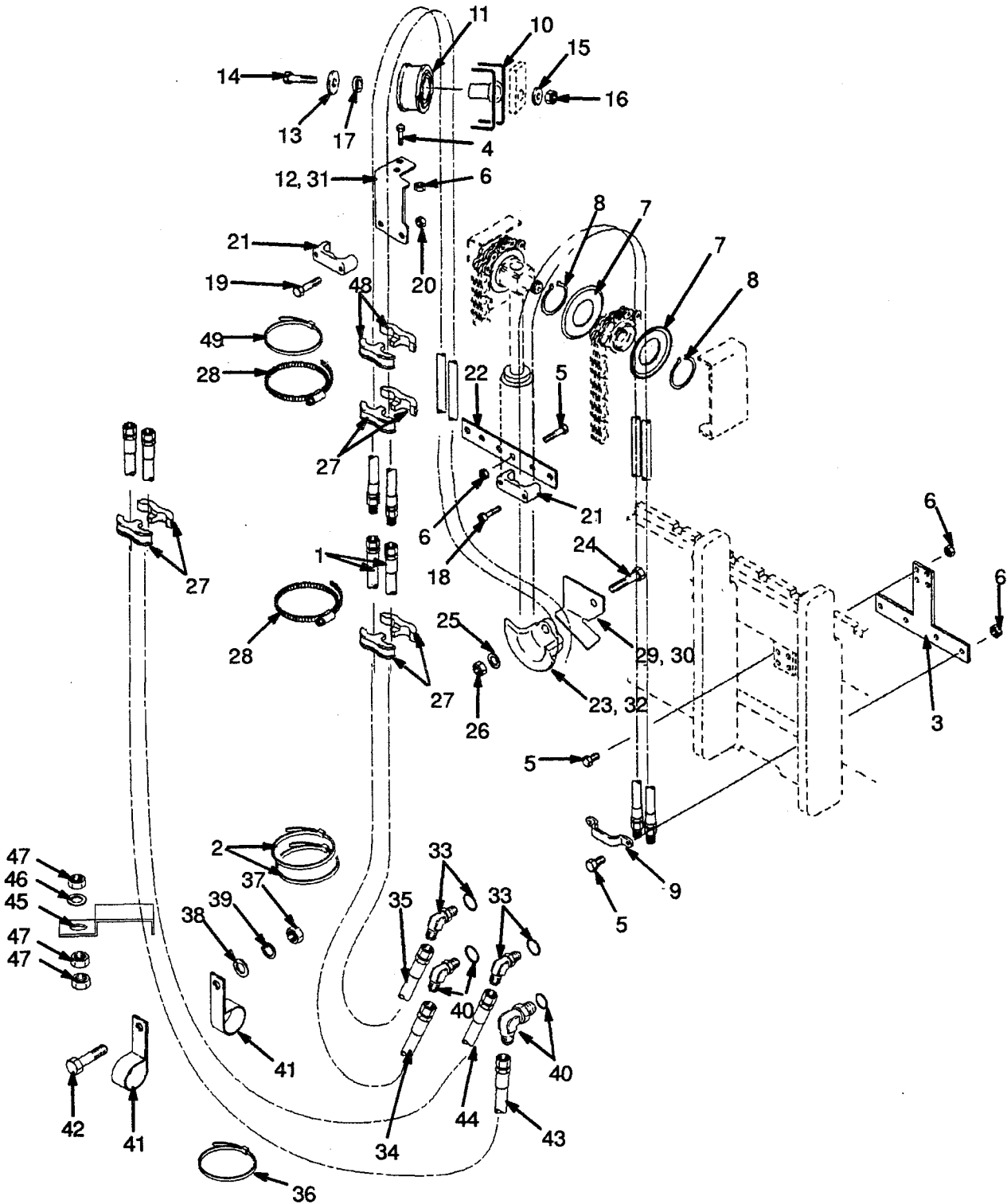
REF NO.	NAME OF PART 1 2 3 4	LIFT HEIGHT TO BOTTOM OF FORKS			
		4460 mm	4760 mm	5510 mm	5960 mm
		PART NO.			
	Mast Group No.	A554-4460	A554-4760	A554-5510	A554-5960
1	Hose	1368405	1368407	1368412	1368415

REF	PART NO.	NAME OF PART	QTY	REF	PART NO.	NAME OF PART	QTY
<sup>a</sup>		Mast Assy	..	22	1353464	Plate	1
1	<sup>a</sup>	Hose	2	23	1360537	Hose Guide	1
2	137852	Strap Clamp	2	24	292521	Hex Head Bolt	1
3	1369323	Bracket	1	25	320160	Washer	1
4	136704	Hex Head Bolt	2	26	316826	Locknut	1
5	136749	Hex Head Bolt	8	27	1353530	Clamp	4
6	313828	Locknut	10	28	1360508	Clamp	2
7	1345199	Hose Guide	2	29	1375574	Strap	2
8	1345204	Circlip	2	30	17222	Fitting	1
9	1369333	Clamp	1	30	16483	O-Ring	1
10	1360548	Stubshaft	1	31	1377371	Hose	1
11	1345194	Sheave	1	32	1377372	Hose	1
12	1363498	Bracket (RH)	1	33	16558	Fitting	1
13	1345190	Washer	1	33	16483	O-Ring	1
14	292533	Hex Head Bolt	1	34	2022830	Clamp	1
15	320161	Washer	1	35	292681	Washer	1
16	300937	Nut	1	36	239503	Nut	3
17	1360549	Spacer	1	37	1363255	Bracket (RH)	1
18	293795	Hex Head Bolt	2	38	1353530	Clamp (5960 mm)	2
19	293796	Hex Head Bolt	2	39	1360508	Clamp (5960 mm)	1
20	313805	Nut	2				
21	1360386	Clamp	2				

<sup>a</sup> ☐ Table

## HEADER HOSE THREE STAGE FFL FOUR FUNCTION

(Figure 144)

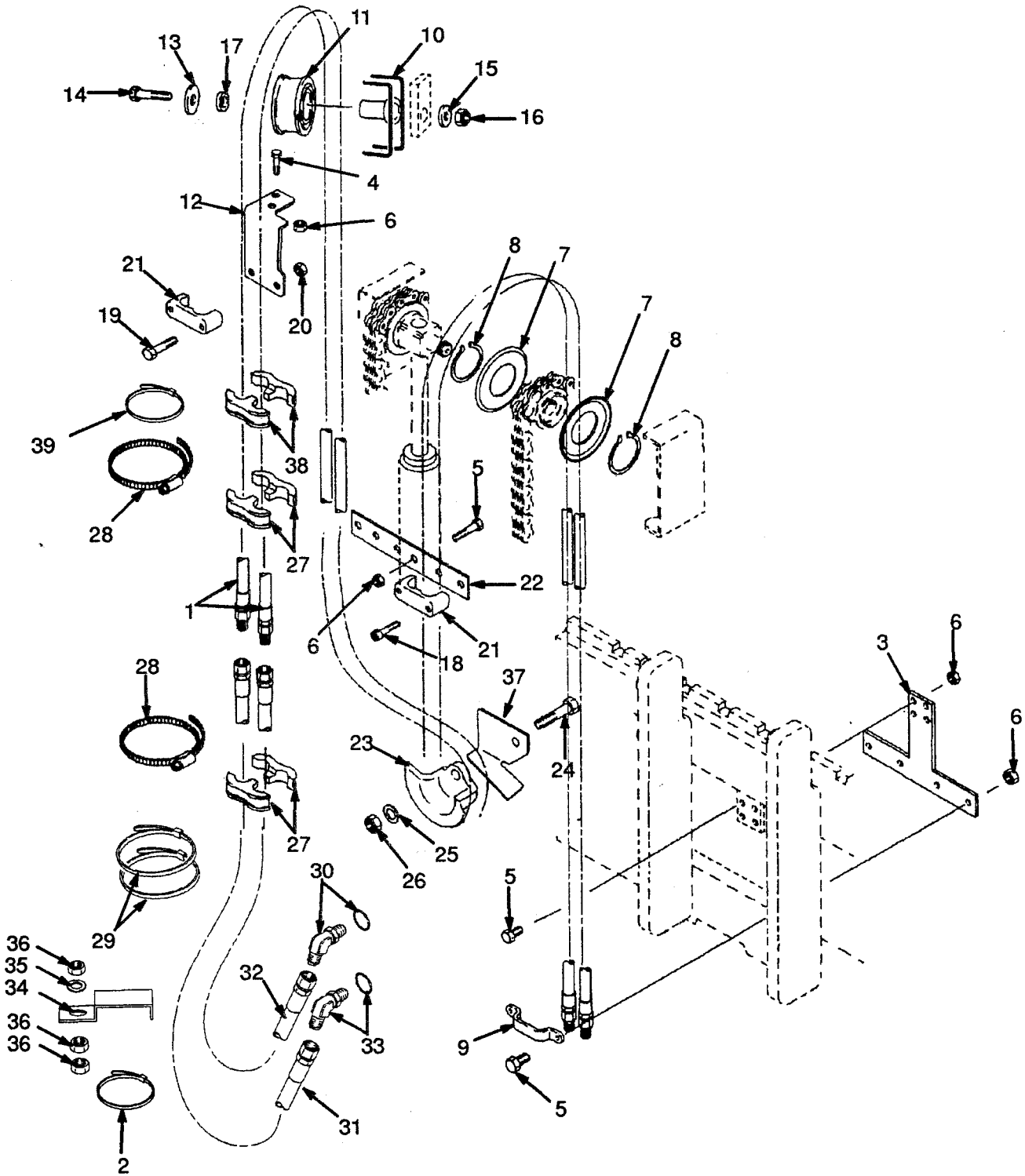


**MAST INSTALLATION  
THREE STAGE FFL**

<b>REF</b>	<b>PART NO.</b>	<b>NAME OF PART</b>	<b>QTY</b>	<b>REF</b>	<b>PART NO.</b>	<b>NAME OF PART</b>	<b>QTY</b>
1	1363260	Rod End (RH) .....	1	11	1370721	Bush .....	2
2	1363261	Rod End (LH) .....	1	12	1370722	Cap .....	2
3	292531	Hex Head Bolt .....	6	13	308117	Pin .....	2
4	292683	Lockwasher .....	6	14	300982	Bush .....	2
5	216877	Nut .....	2	15	320177	Washer .....	2
6	16001	Grease Fitting .....	2	16	1371655	Split Pin .....	2
7	292514	Hex Head Bolt .....	2	17	.....	Tilt Cylinder .....	2
8	1371287	Washer .....	2			☞ Figure 118	
9	1348185	Bush .....	2	18	252682	Lockwasher .....	2
10	1348188	Pin .....	2				

## HEADER HOSE THREE STAGE FFL THREE FUNCTION

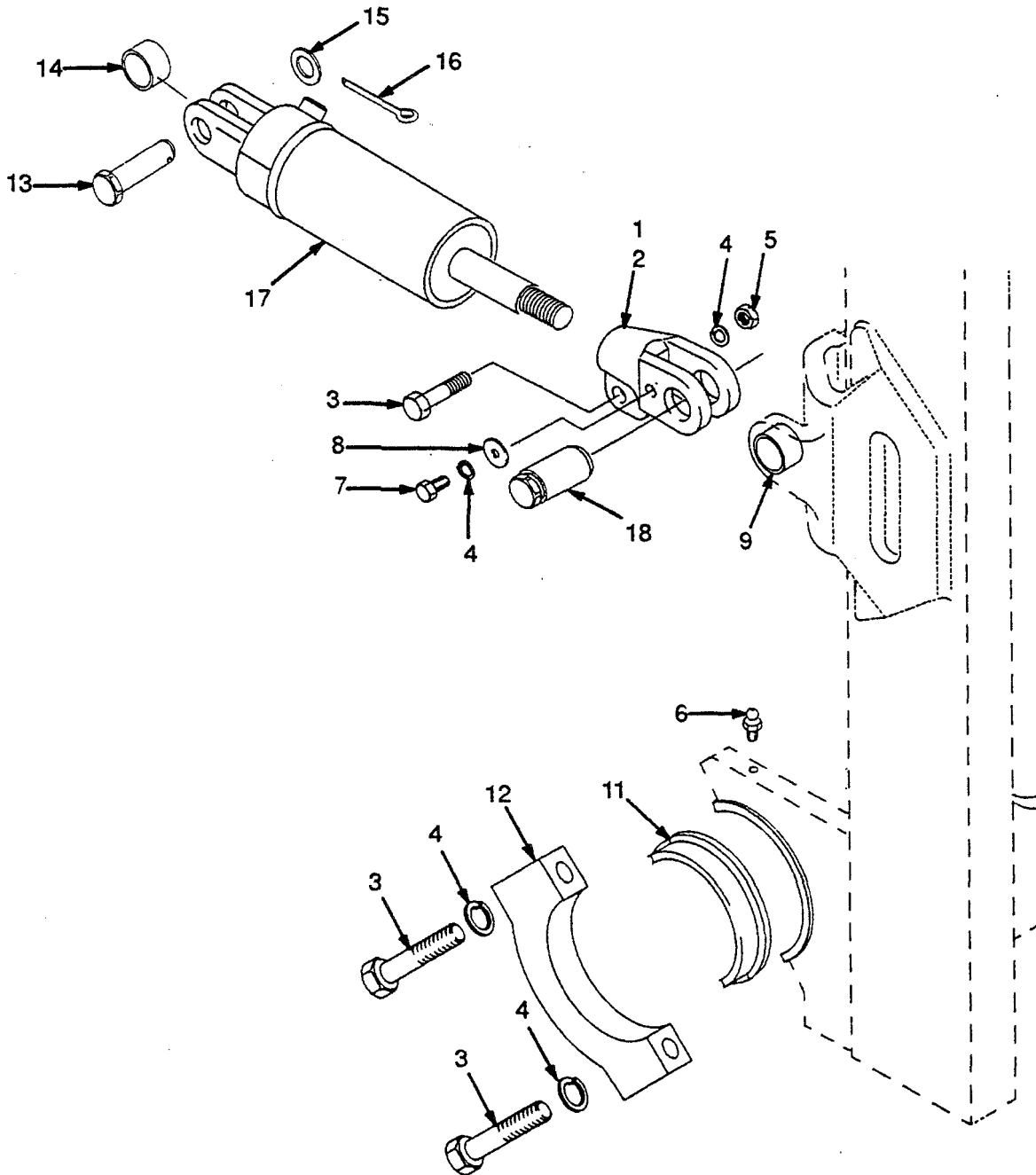
(Figure 143)



**LOAD BACKREST EXTENSION  
THREE STAGE FFL**

<u>REF</u>	<u>PART NO.</u>	<u>NAME OF PART</u>	<u>QTY</u>	<u>REF</u>	<u>PART NO.</u>	<u>NAME OF PART</u>	<u>QTY</u>
1	1349446	Load Backrest Extension .....	1	3	296423	Washer (Optional) .....	4
2	1353533	Hex Head Bolt .....	4	4	300937	Nut .....	4
3	221771	Washer .....	4				

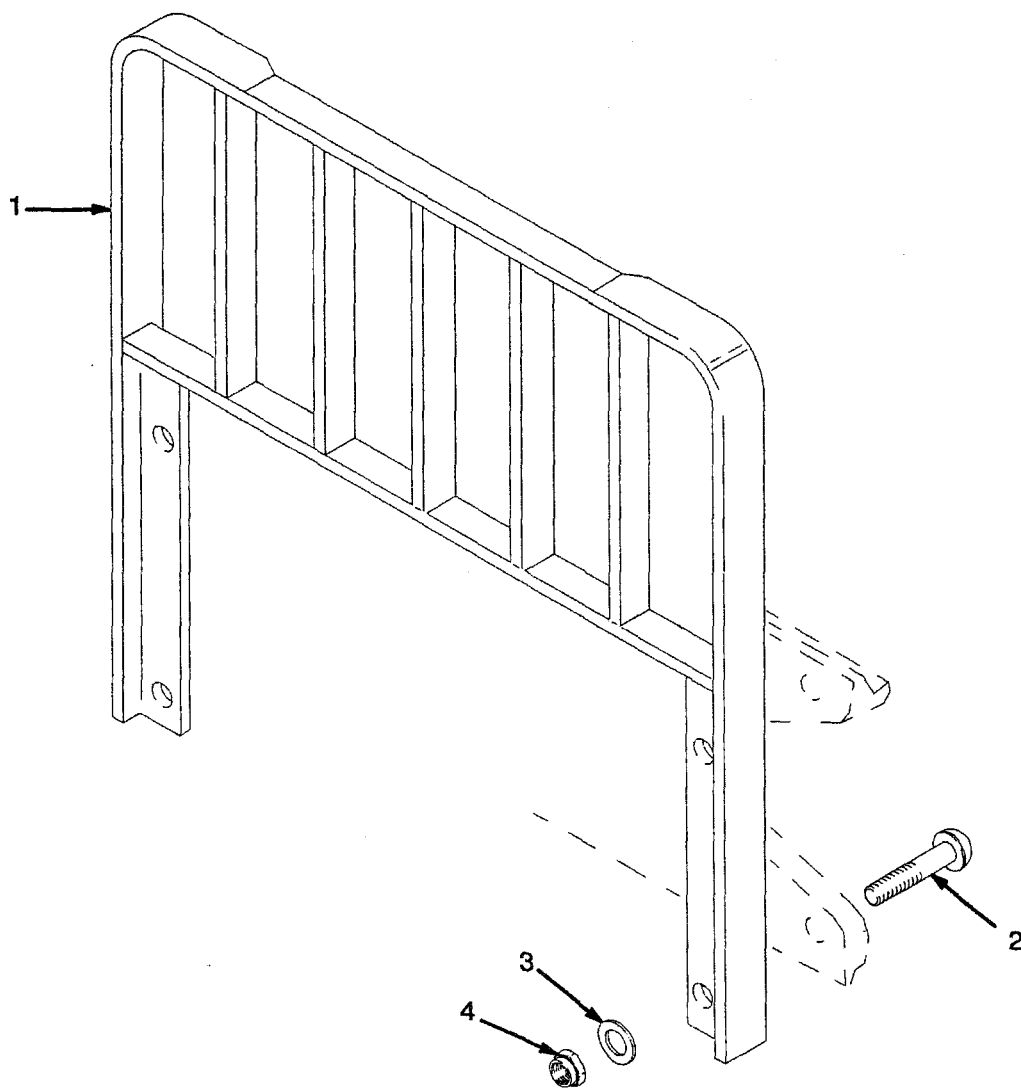
## MAST INSTALLATION THREE STAGE FFL (Figure 142)



**CARRIAGE  
THREE STAGE FFL**

<u>REF</u>	<u>PART NO.</u>	<u>NAME OF PART</u>	<u>QTY</u>	<u>REF</u>	<u>PART NO.</u>	<u>NAME OF PART</u>	<u>QTY</u>
	1353527	Carriage .....	1	6	1363272	Load Roller ("B" 0,76 mm) ....	AR
1	1353467	Frame .....	1	6	1363273	Load Roller ("C" 1,52 mm) ....	AR
2	1345216	Stubshaft .....	6	7	1369345	Chain Anchor .....	2
3	58901	Circlip .....	6	8	1353408	Pin .....	2
4	129387	Shim .....	AR	9	131358	Circlip .....	4
5	366115	Spacer .....	2	10	323161	Pin .....	2
6	1363271	Load Roller ("A" Standard) .....	6	11	15200	Split Pin .....	2

## LOAD BACKREST EXTENSION THREE STAGE FFL (Figure 141)



**FREE-LIFT CYLINDER  
THREE STAGE FFL**

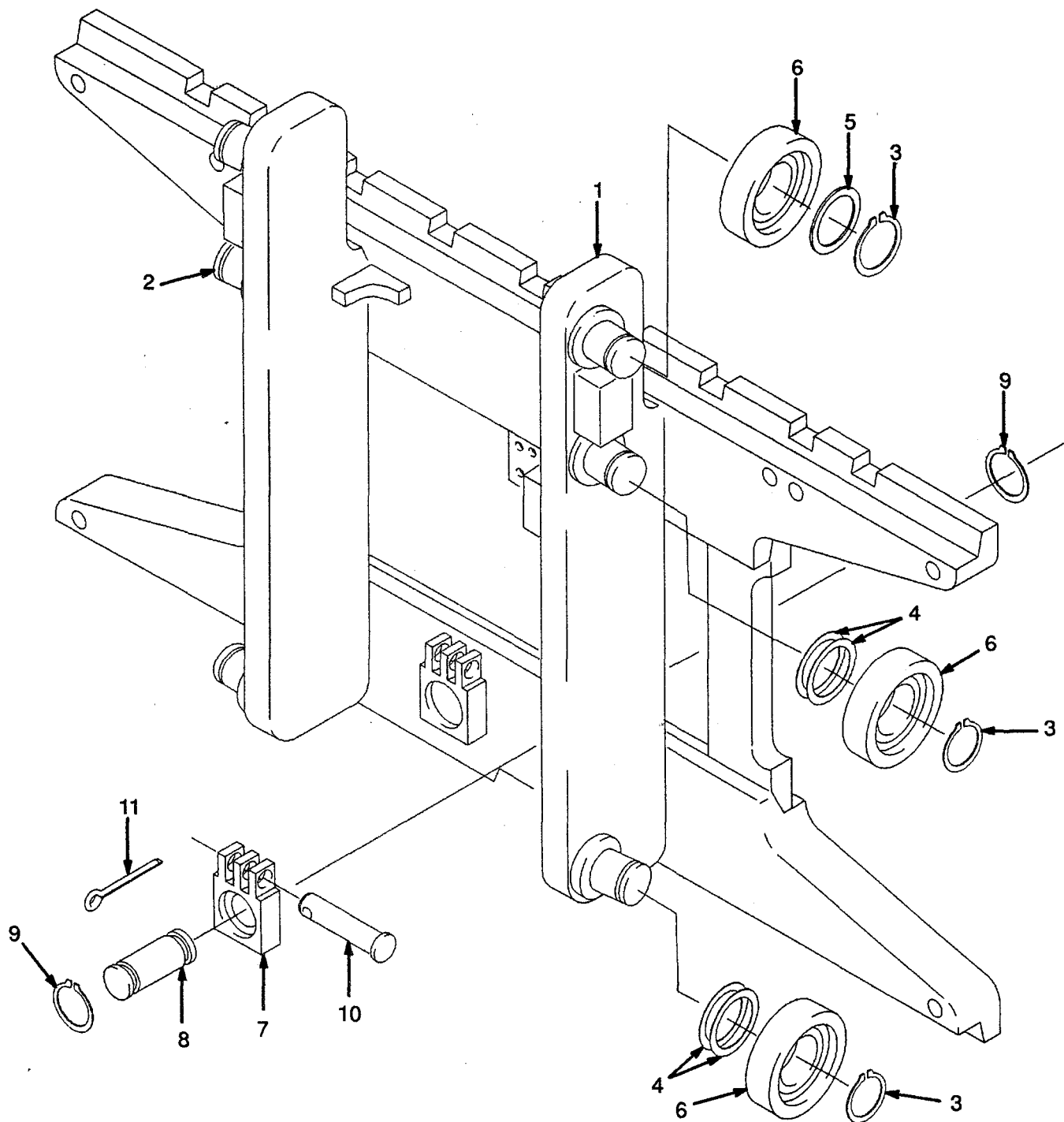
REF NO.	NAME OF PART 1 2 3 4	LIFT HEIGHT TO BOTTOM OF FORKS			
		4460 mm	4760 mm	5510 mm	5960 mm
		PART NO.			
	Group No.	8601906	8601908	8601914	8601917
	Lift Cylinder	1362886	1362888	1362894	1362897
1	Shell	1362923	1362925	1362931	1362934
2	Rod	1362960	1362962	1362968	1362971

REF	PART NO.	NAME OF PART	QTY	REF	PART NO.	NAME OF PART	QTY
a	....	Group No. ....	..	10	b 1362881	Wear Ring .....	1
a	....	Cylinder .....	1	11	257913	Check Valve .....	1
1	a	Shell .....	1	12	b 39348	O-Ring .....	1
2	a	Rod .....	1	13	297531	Washer .....	1
3	b 2013099	Wiper .....	1	14	187388	Circlip .....	1
4	b 1358970	Seal .....	1	15	1361302	Screw .....	1
5	1362880	Gland .....	1	16	b 190887	Washer .....	1
6	b 615135	Back-Up Ring .....	1	17	186061	Packing Lube .....	AR
7	b 55146	O-Ring .....	1				
8	b 638250	Back-Up Ring .....	1				
9	b 201829	Seal .....	1				

a ☞ Table  
b Included In Seal Kit 1360141

## CARRIAGE THREE STAGE FFL

(Figure 140)

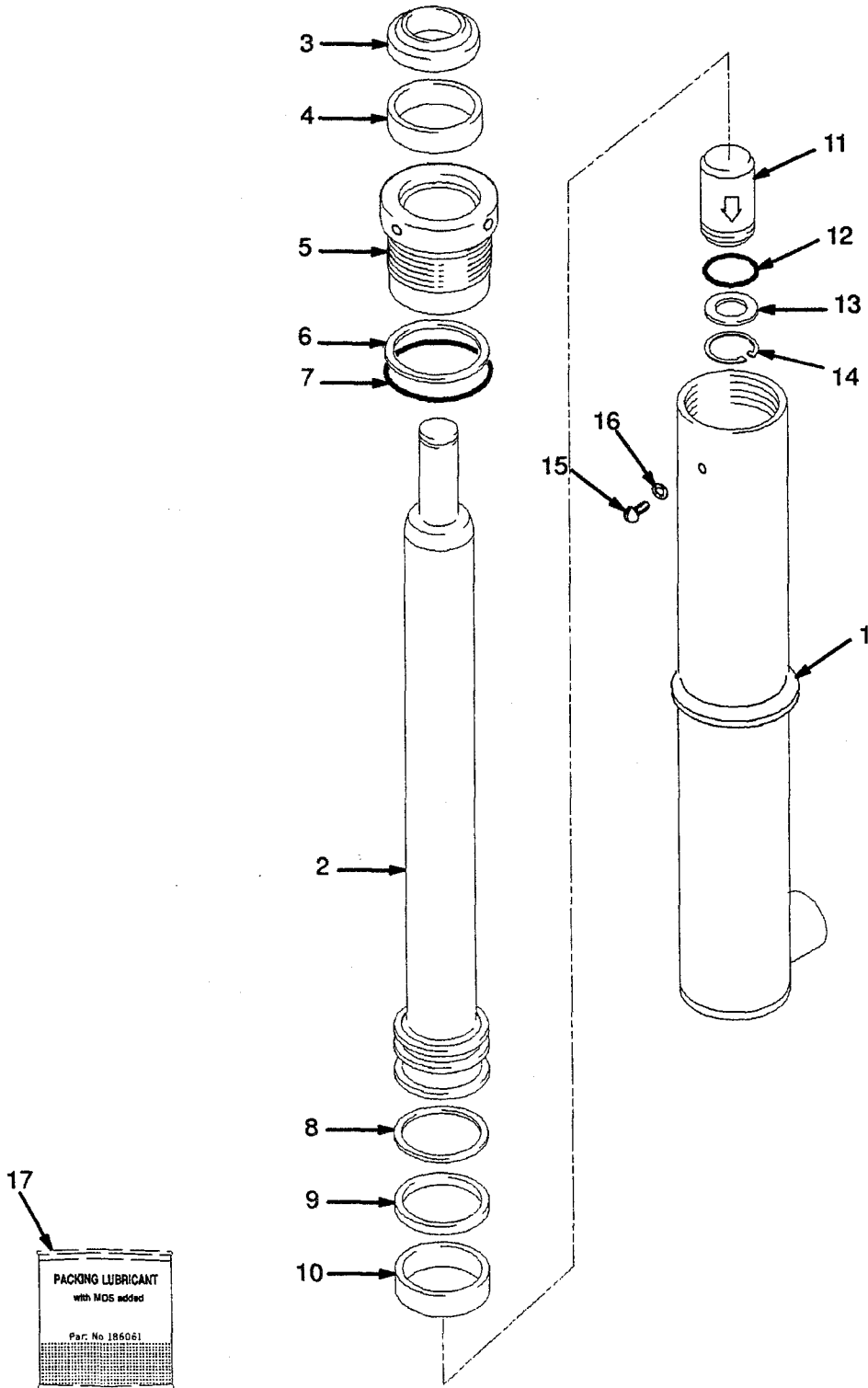


**MAIN CYLINDER  
THREE STAGE FFL  
RIGHT HAND**

REF NO.	NAME OF PART 1 2 3 4	LIFT HEIGHT TO BOTTOM OF FORKS			
		4460 mm	4760 mm	5510 mm	5960 mm
		PART NO.			
	Group No.	8601756	8601758	8601763	8601766
	Lift Cylinder	1362706	1362719	1362749	1362767
1	Shell	1362713	1362726	1362756	1362774
2	Rod	1362704	1362717	1362746	1362765
4	Spacer	-	-	-	1355610

REF	PART NO.	NAME OF PART	QTY	REF	PART NO.	NAME OF PART	QTY
a		Group No.	..	10	b 1356749	Seal	1
a		Lift Cylinder	1	11	b 55407	O-Ring	1
1	a	Shell	1	12	b 330692	Seal	1
2	a	Rod	1	13	b 322824	Back-Up Ring	2
3	1371653	Gland	1	14	b 1362871	Wear Ring	1
4	a	Spacer	1	15	b 1362875	Piston Ring	1
5	257913	Check Valve	1	16	b 322902	Wear Ring	1
6	297531	Washer	1	17	186061	Packing Lube	AR
7	187388	Cirdip	1				
8	b 39348	O-Ring	1	a		Table	
9	b 1319668	Wiper	1	b		Included In Seal Kit 1360139	

## FREE-LIFT CYLINDER THREE STAGE FFL (Figure 139)

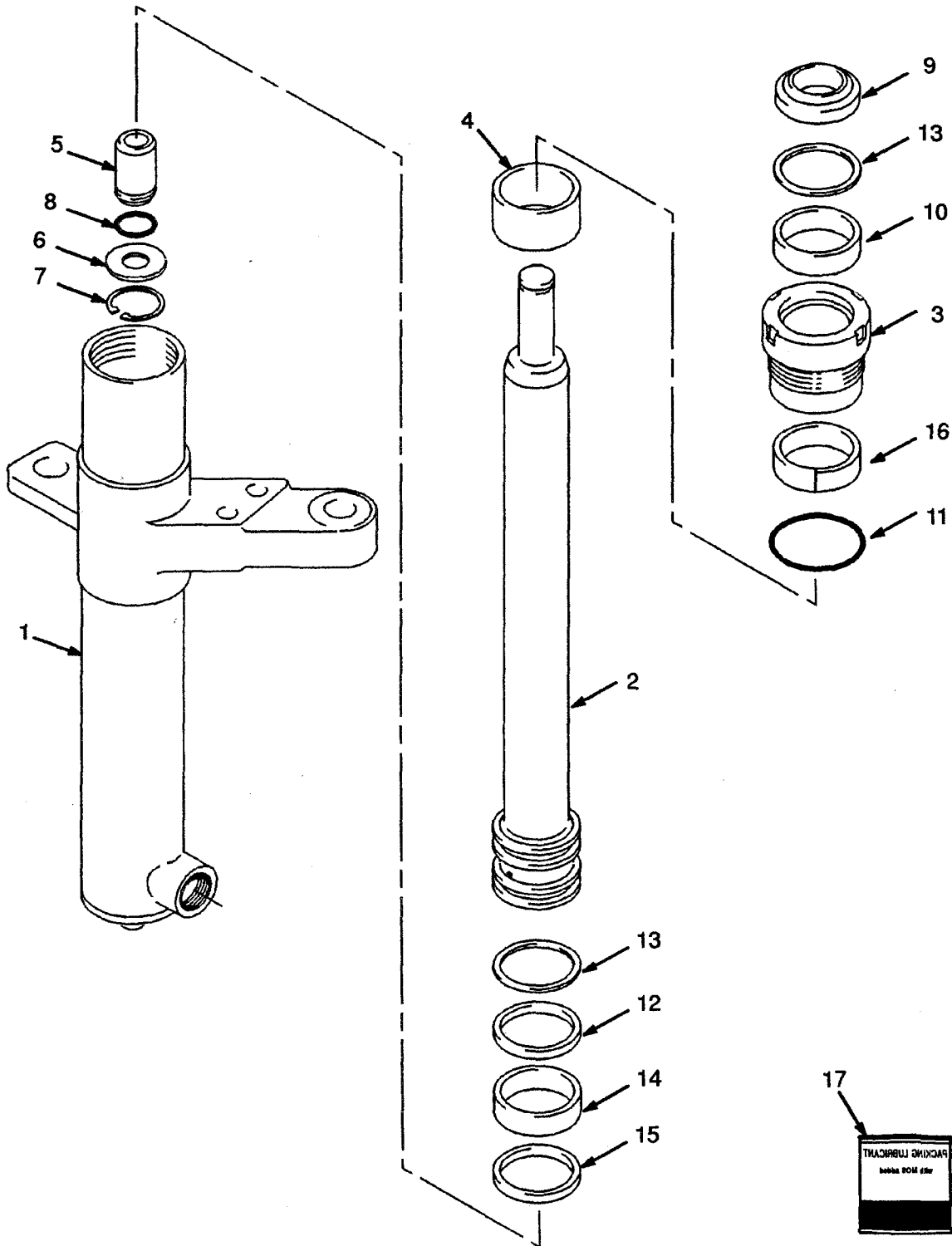


**MAIN CYLINDER  
THREE STAGE FFL  
LEFT HAND**

REF NO.	NAME OF PART 1 2 3 4	LIFT HEIGHT TO BOTTOM OF FORKS			
		4460 mm	4760 mm	5510 mm	5960 mm
		PART NO.			
	Group No.	8601706	8601708	8601713	8601716
	Lift Cylinder	1362702	1362715	1362745	1362763
1	Shell	1362703	1362716	1366057	1362764
2	Rod	1362704	1362717	1362746	1362765
4	Spacer	-	-	-	1355610

REF	PART NO.	NAME OF PART	QTY	REF	PART NO.	NAME OF PART	QTY
a	.....	Group No. ....	..	10	b 1356749	Seal .....	1
a	.....	Lift Cylinder .....	1	11	b 55407	O-Ring .....	1
1	a	Shell .....	1	12	b 330692	Seal .....	1
2	a	Rod .....	1	13	b 322824	Back-Up Ring .....	2
3	1371653	Gland .....	1	14	b 1362871	Wear Ring .....	1
4	a	Spacer .....	1	15	b 1362875	Piston Ring .....	1
5	257913	Check Valve .....	1	16	b 322902	Wear Ring .....	1
6	297531	Washer .....	1	17	186061	Packing Lube .....	AR
7	187388	Circlip .....	1				
8	b 39348	O-Ring .....	1	a	☐ Table		
9	b 1319668	Wiper .....	1	b	Included In Seal Kit 1360139		

## MAIN CYLINDER THREE STAGE FFL RIGHT HAND (Figure 138)

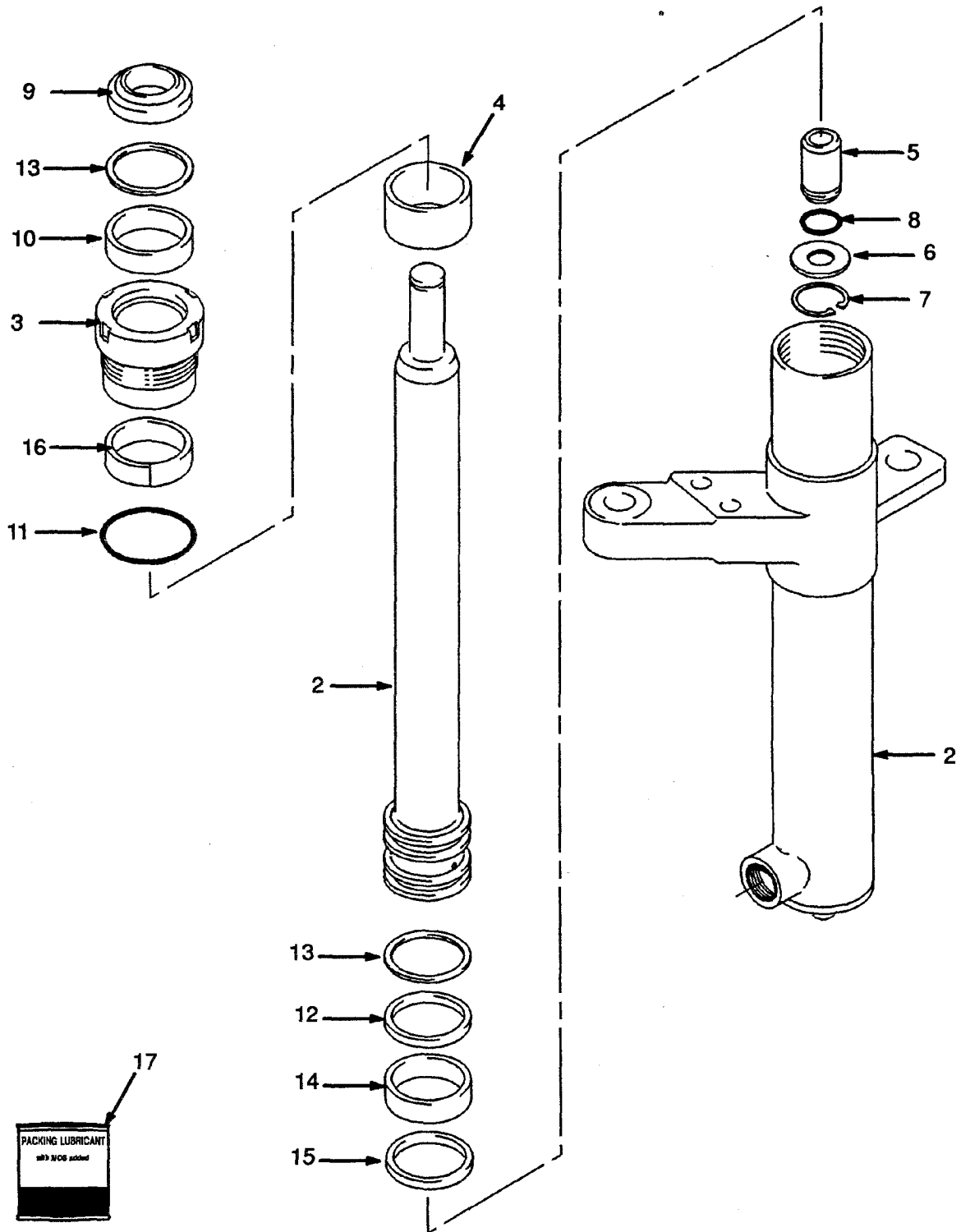


**FREE-LIFT  
THREE STAGE FFL**

REF NO.	NAME OF PART 1 2 3 4	LIFT HEIGHT TO BOTTOM OF FORKS			
		4460 mm	4760 mm	5510 mm	5960 mm
		PART NO.			
	Mast Group No.	A554-4460	A554-4760	A554-5510	A554-5960
1	Chain	197345	231084	182343	223389
2	Hose	1363306	13633008	1363313	1363316

REF	PART NO.	NAME OF PART	QTY	REF	PART NO.	NAME OF PART	QTY
a	.....	Mast Assy .....	1	18	1337905	Crosshead .....	1
1 a	.....	Chain .....	2	19	292533	Hex Head Bolt .....	1
2 a	.....	Hose .....	1	20	1360534	Stubshaft .....	1
3	161003	Nut .....	2	21	1343989	Sheave .....	1
4	297649	Base Ring .....	2	21	1354901	Bush .....	1
5	323161	Pin .....	2	22	1354912	Sheave .....	2
6	15200	Split Pin .....	2	23	37752	Circlip .....	2
7 b	320313	Chain Anchor .....	2	24	231020	Bearing .....	1
7 c	1369357	Chain Anchor .....	2	25	1354911	Roller .....	1
8	1360544	Chain Guard .....	2	26	304526	Circlip .....	2
9	292527	Hex Head Bolt .....	2	27	131358	Circlip .....	1
10	292683	Lockwasher .....	3	28	.....	Cylinder .....	1
11	1353547	Guard .....	1			☐ Figure 139	
12	302461	Pin .....	2	29	171350	Chain Lube (400 ml) .....	AR
13	1344323	Bracket .....	1	30	599737	Chain Wear Scale .....	AR
14	292528	Hex Head Bolt .....	4				
15	320161	Washer .....	6	a	☐ Table		
16	300937	Nut .....	4	b	Last Used on S/N A554B-1819		
17	1333243	Flow Valve .....	1	c	First Used on S/N A554B-1820		

## MAIN CYLINDER THREE STAGE FFL LEFT HAND (Figure 137)



**MAIN LIFT  
THREE STAGE FFL  
FIRST USED ON S/N  
A554B-2100**

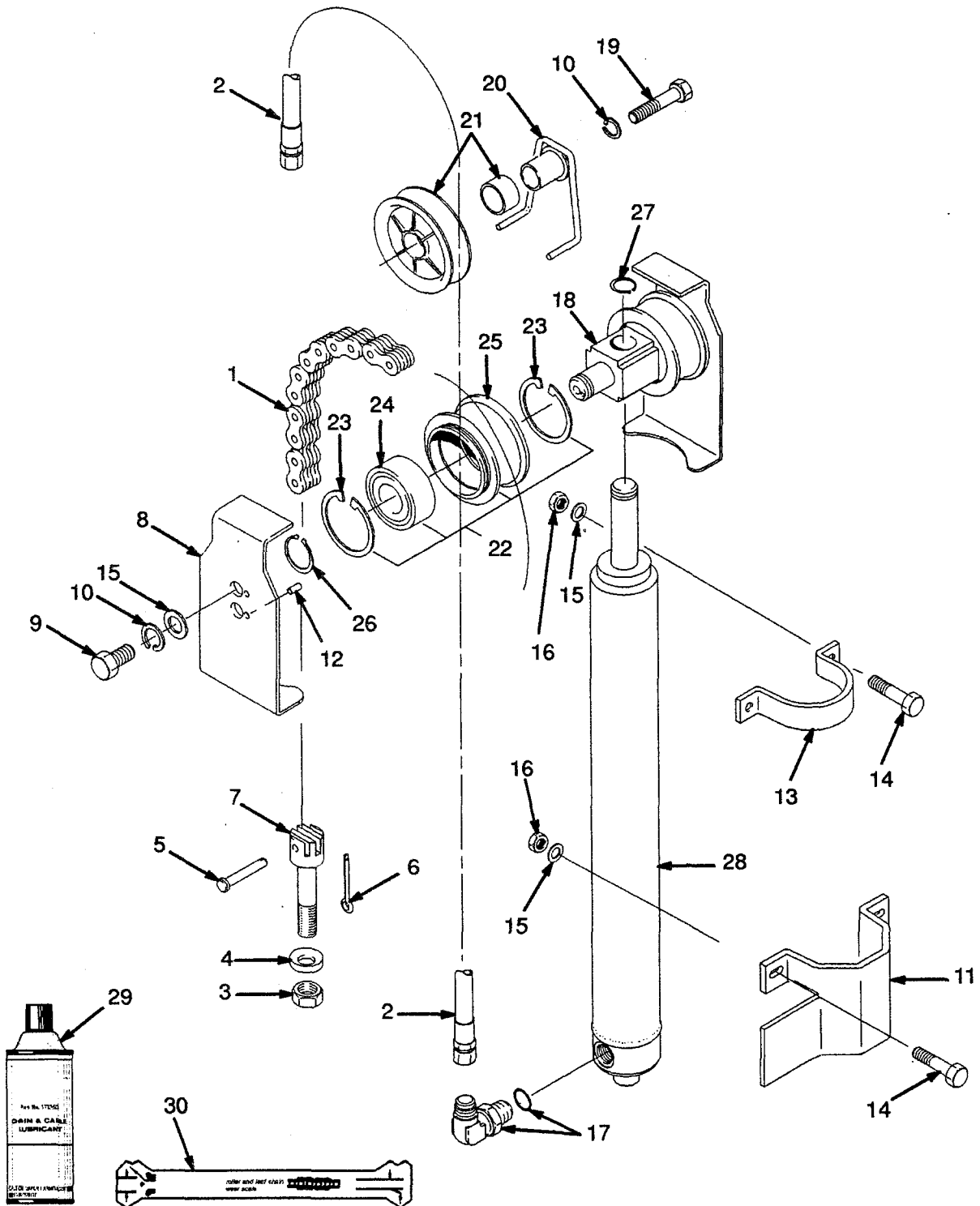
REF NO.	NAME OF PART 1 2 3 4	LIFT HEIGHT TO BOTTOM OF FORKS			
		4460 mm	4760 mm	5510 mm	5960 mm
		PART NO.			
	Mast Group No.	A554-4460	A554-4760	A554-5510	A554-5960
1	Lift Chain	1363306	1363308	1363313	1363316

REF	PART NO.	NAME OF PART	QTY	REF	PART NO.	NAME OF PART	QTY
a		Mast Assy	1	18	1333392	Housing	1
1	a	Lift Chain	2	19	189595	Fitting	2
2		Cylinder (LH) ☞ Figure 137	1	20	15223	Pin	2
3		Cylinder (RH) ☞ Figure 138	1	21	161003	Nut	4
4	292531	Hex Head Bolt	2	22	297649	Base Ring	4
5	296422	Washer	4	23	16543	Fitting	1
6	323090	Spacer	2	23	16486	O-Ring	1
7	300937	Locknut	2	24	323161	Pin	4
8	131358	Circlip	1	25	15200	Pin	4
9	1333382	Washer	2	26	1369357	Chain Anchor	2
10	1354915	Washer (0,25 mm)	AR	27	1365140	Chain Anchor	1
10	1354916	Washer (0,75 mm)	AR	28	120938	Spring	2
10	1354917	Washer (1,50 mm)	AR	29	323160	Washer	2
11	313828	Nut	4	30	1376324	Tube	1
12	136681	Hex Head Bolt	4	31	1376100	Hose	1
13	17051	Fitting	1	32	16882	Fitting	1
14	1363250	Plate	1	33	292509	Hex Head Bolt	2
15	1363251	Clamp	1	34	1345403	Hose	1
16	16560	Fitting	1	35	599737	Chain Wear Scale	AR
16	16485	O-Ring	1	36	171350	Chain Lube (400 ml)	AR
17	323061	Valve	1				

a ☞ Table

## FREE-LIFT THREE STAGE FFL

(Figure 136)



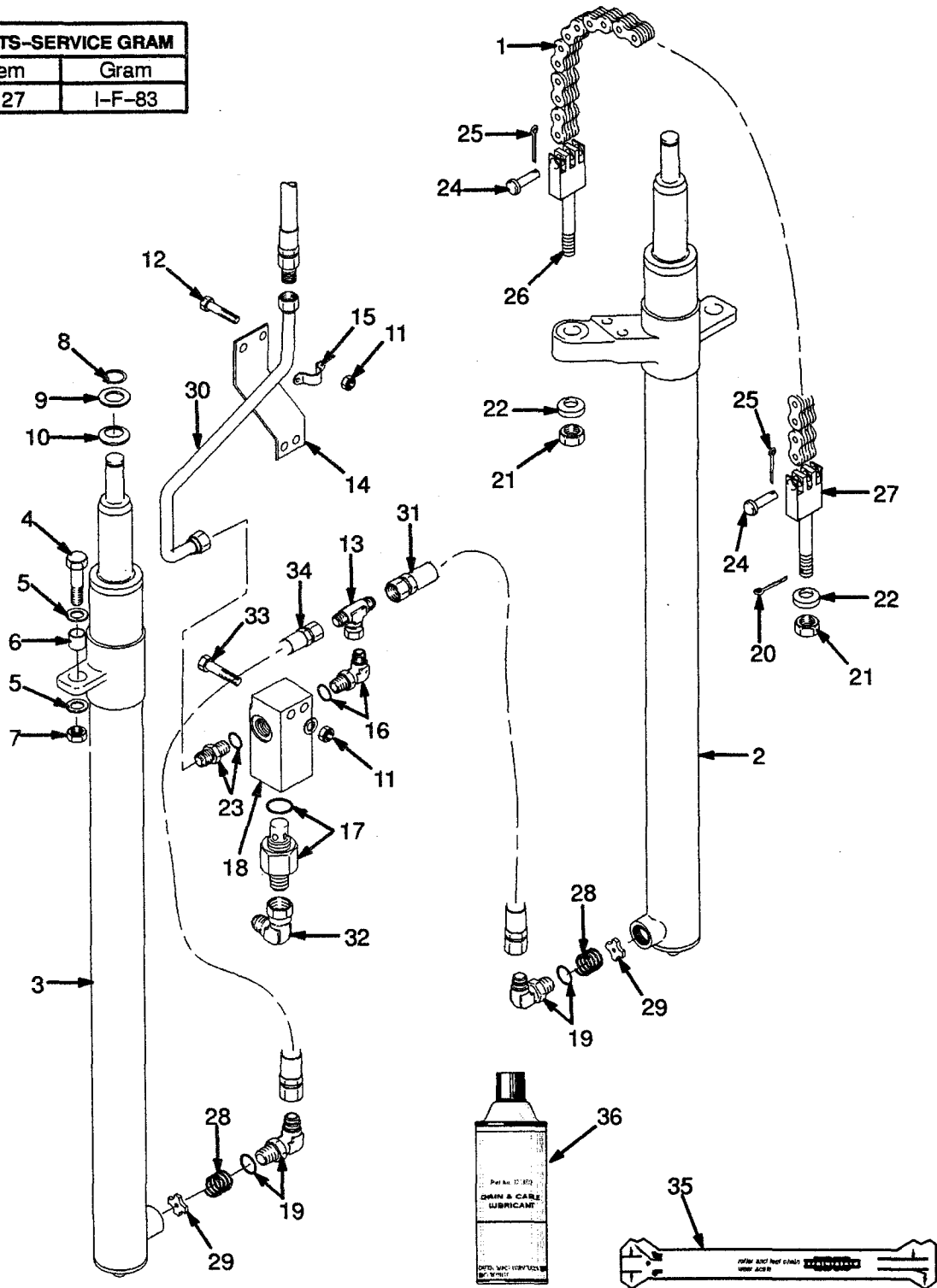
**MAIN LIFT  
THREE STAGE FFL  
LAST USED ON S/N  
A554B-2099**

REF NO.	NAME OF PART 1 2 3 4	LIFT HEIGHT TO BOTTOM OF FORKS				
		4460 mm	4760 mm	5360 mm	5960 mm	6410 mm
		PART NO.				
Mast Group No.		A554-4460	A554-4760	A554-5360	A554-5960	A554-6410
1	Lift Chain	88436	88441	88446	304200	246994

REF	PART NO.	NAME OF PART	QTY	REF	PART NO.	NAME OF PART	QTY
a	.....	Mast Assy .....	1	20	1333392	Valve Housing .....	1
1	a	..... Chain .....	2	21	16542	Fitting .....	1
2	.....	Cylinder (LH) .....	1	21	16485	O-Ring .....	1
		☞ Figure 137		22	16543	Fitting .....	1
3	.....	Cylinder (RH) .....	1	22	16486	O-Ring .....	1
		☞ Figure 138		23	1353534	Hose .....	1
4	292531	Hex Head Bolt .....	2	24	1353535	Hose .....	1
5	296422	Washer .....	4	25	17063	Fitting .....	1
6	323090	Spacer .....	2	26	120938	Spring .....	2
7	300937	Locknut .....	2	27	323160	Washer .....	2
8	131358	Cirdip .....	2	28	189595	Fitting .....	2
9	1333382	Washer .....	2	28	16485	O-Ring .....	1
10	1354915	Washer (0,25 mm) .....	AR	29	320313	Chain Anchor .....	2
10	1354916	Washer (0,75 mm) .....	AR	30	323161	Pin .....	4
10	1354917	Washer (1,50 mm) .....	AR	31	15200	Split Pin .....	4
11	1347202	Clamp .....	1	32	1365140	Chain Anchor .....	2
12	136704	Hex Head Bolt .....	2	33	15223	Split Pin .....	2
13	313828	Locknut .....	4	34	161003	Nut .....	4
14	320157	Washer .....	6	35	297649	Base Ring .....	4
15	1363250	Plate .....	1	36	16882	Fitting .....	1
16	287851	Hex Head Bolt .....	2	37	171350	Chain Lube (400 ml) .....	AR
17	1363251	Clamp .....	1	38	599737	Chain Wear Scale .....	AR
18	1353399	Tube .....	1				
19	323061	Valve .....	1	a	☞ Table		

## MAIN LIFT THREE STAGE FFL FIRST USED ON S/N A554B-2100 (Figure 135)

PARTS-SERVICE GRAM	
Item	Gram
1,27	I-F-83

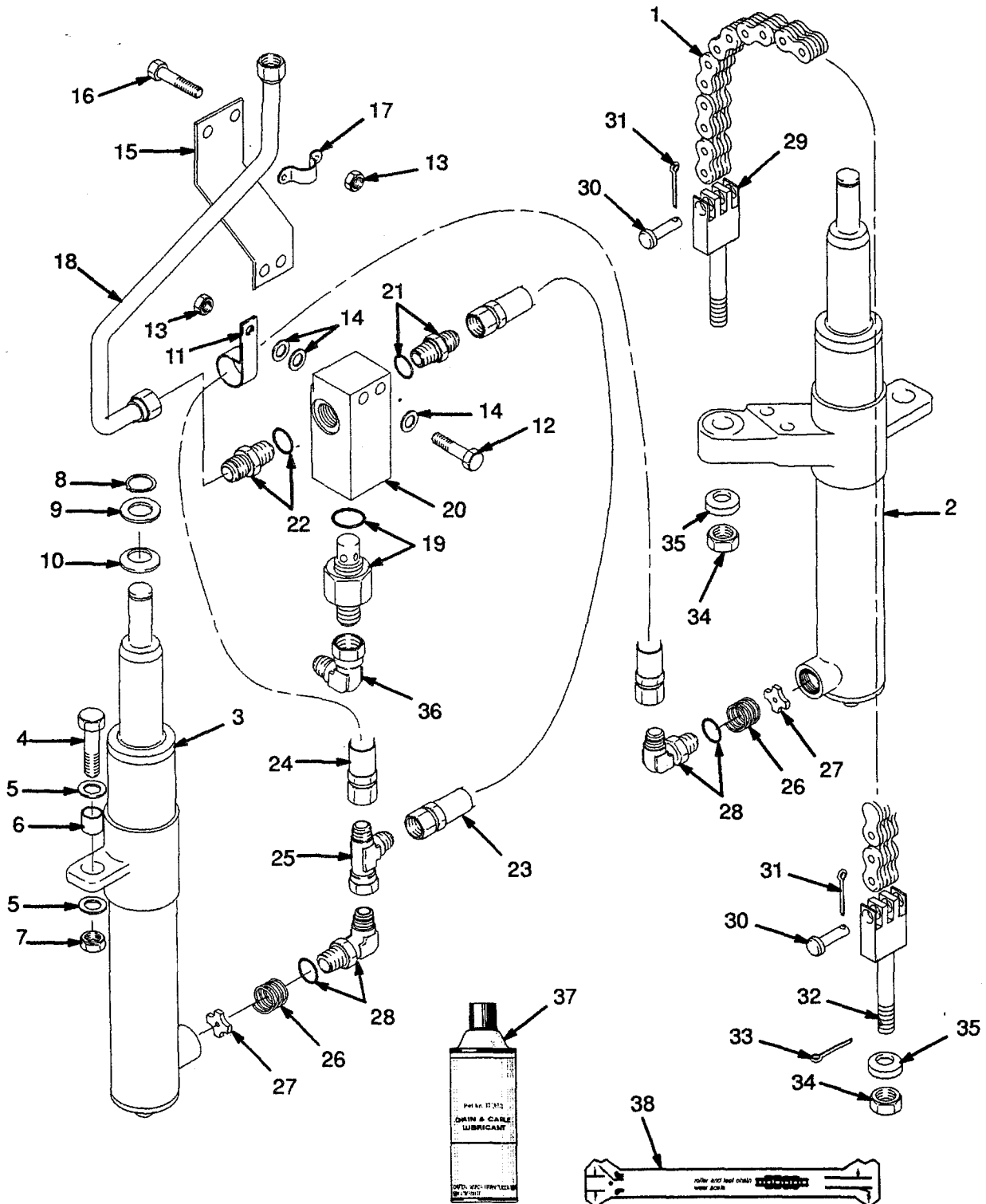


**INNER MAST  
THREE STAGE FFL**

REF NO.	NAME OF PART 1 2 3 4	LIFT HEIGHT TO BOTTOM OF FORKS			
		4460 mm	4760 mm	5510 mm	5960 mm
		PART NO.			
	Mast Group No.	A554-4460	A554-4760	A554-5510	A554-5960
1	Inner Mast	1352856	1352858	1352863	1352866

REF	PART NO.	NAME OF PART	QTY	REF	PART NO.	NAME OF PART	QTY
a	.....	Mast Assy .....	1	5	1353191	Load Roller ("A" Standard) .....	2
1	a	..... Inner Mast .....	1	5	1353192	Load Roller ("B" 0,76 mm) .....	AR
2	1345216	Stubshaft .....	2	5	1353193	Load Roller ("C" 1,52 mm) .....	AR
3	58901	Cirdip .....	2				
4	129387	Shim (0,508 mm) .....	AR	a	☐ Table		

## MAIN LIFT THREE STAGE FFL LAST USED ON S/N A554B-2099 (Figure 134)

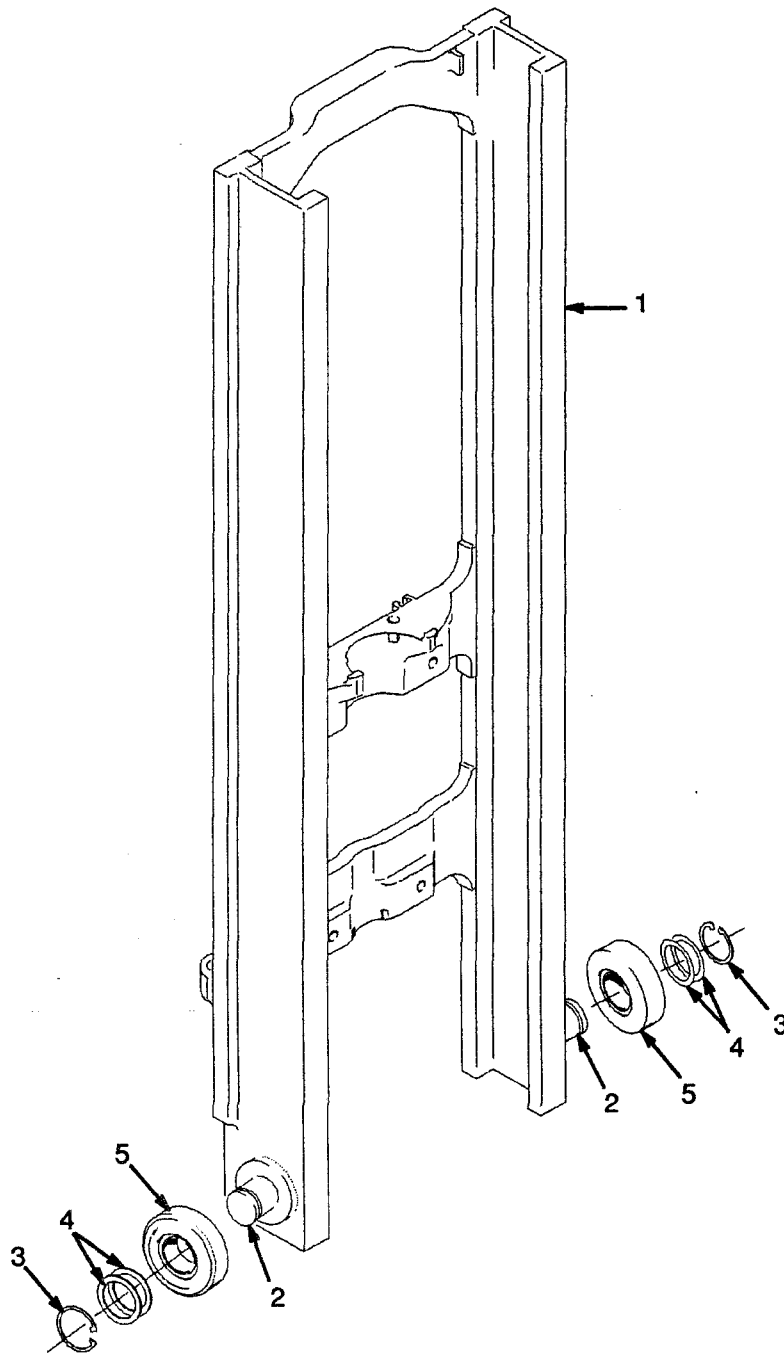


**INTERMEDIATE MAST  
THREE STAGE FFL**

REF NO.	NAME OF PART 1 2 3 4	LIFT HEIGHT TO BOTTOM OF FORKS			
		4460 mm	4760 mm	5510 mm	5960 mm
		PART NO.			
Mast Group No.		A554-4460	A554-4760	A554-5510	A554-5960
1	Intermediate Mast	1352956	1352958	1352963	1352966

REF	PART NO.	NAME OF PART	QTY	REF	PART NO.	NAME OF PART	QTY
a		Mast Assy	1	7	58901	Circlip	4
1	a	Intermediate Mast	1	8	129387	Shim (0,508 mm)	AR
2	1345216	Stubshaft	4	9	304526	Circlip	2
3	215212	Bearing Strip	2	10	1345183	Sheave	2
4	131716	Shim (0,508 mm)	4	11	1345181	Roller	1
5	104506	O-Ring	4	12	231020	Bearing	1
6	1353191	Load Roller ("A" Standard)	4	13	37752	Circlip	2
6	1353192	Load Roller ("B" 0,76 mm)	AR				
6	1353193	Load Roller ("C" 1,52 mm)	AR	a		Table	

## INNER MAST THREE STAGE FFL (Figure 133)

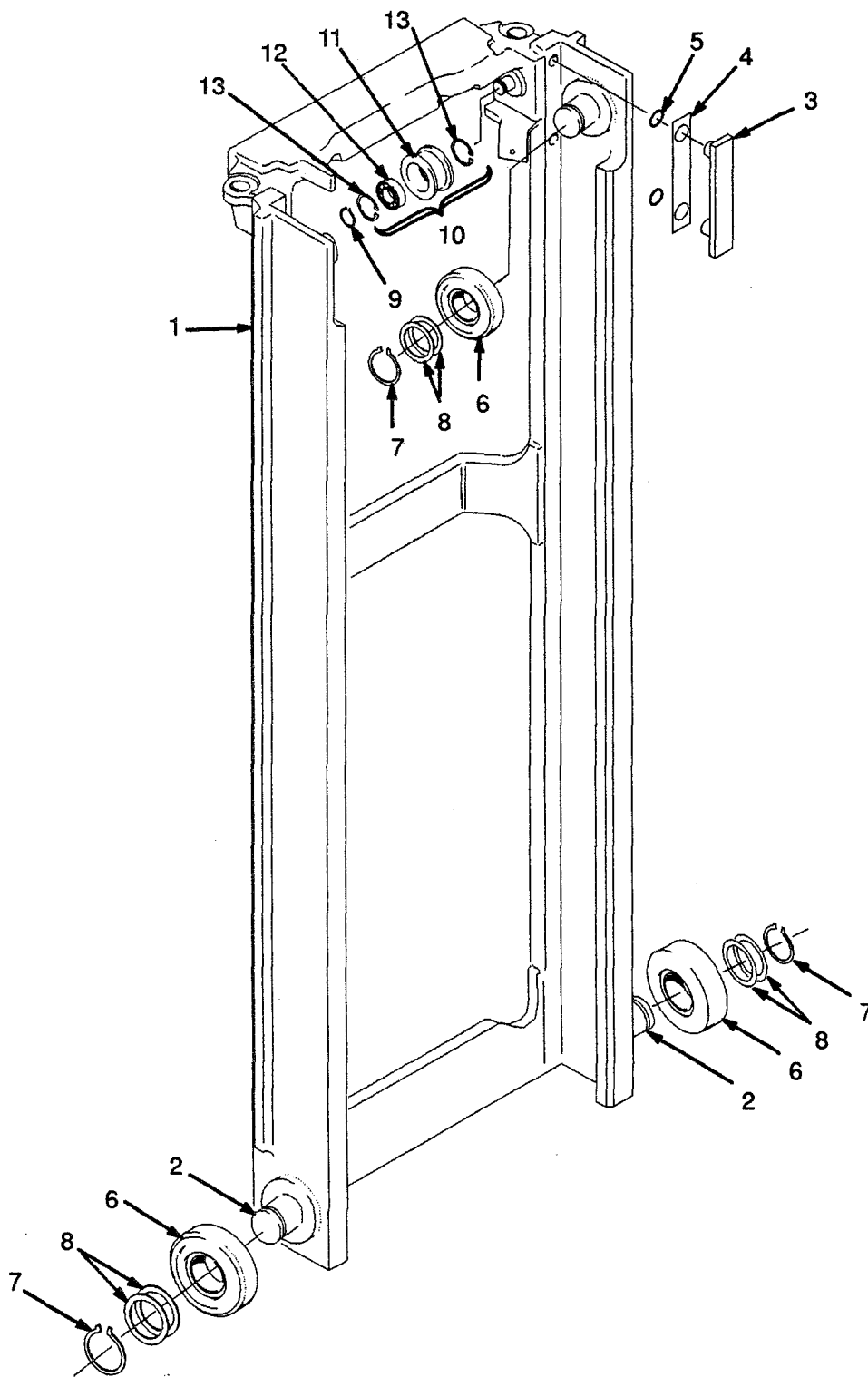


**OUTER MAST  
THREE STAGE FFL**

REF NO.	NAME OF PART 1 2 3 4	LIFT HEIGHT TO BOTTOM OF FORKS			
		4460 mm	4760 mm	5510 mm	5960 mm
		PART NO.			
	Mast Group No.	A554-4460	A554-4760	A554-5510	A554-5960
1	Outer Mast	1353056	1353058	1353064	1353067

REF	PART NO.	NAME OF PART	QTY	REF	PART NO.	NAME OF PART	QTY
a	.....	Mast Assy .....	1	6	1353192	Load Roller ("B" 0,76 mm) .....	AR
1	a	..... Outer Mast .....	1	6	1353193	Load Roller ("C" 1,52 mm) .....	AR
2	1345216	Stubshaft .....	2	7	58901	Circlip .....	2
3	215212	Bearing Strip .....	2	8	129387	Shim (0,508 mm) .....	AR
4	131716	Shim (0,508 mm) .....	4				
5	104506	O-Ring .....	4	a	☞ Table		
6	1353191	Load Roller ("A" Standard) .....	2				

## INTERMEDIATE MAST THREE STAGE FFL (Figure 132)



**THREE STAGE FFL**

Carriage  
Three Stage FFL ..... Page 298

Fork  
Three Stage FFL ..... Page 308

Free-Lift Cylinder  
Three Stage FFL ..... Page 296

Free-Lift  
Three Stage FFL ..... Page 290

Header Hose  
Three Stage FFL  
Four Function ..... Page 306

Header Hose  
Three Stage FFL  
Three Function ..... Page 304

Inner Mast  
Three Stage FFL ..... Page 284

Intermediate Mast  
Three Stage FFL ..... Page 282

Load Backrest Extension  
Three Stage FFL ..... Page 300

Main Cylinder  
Three Stage FFL  
Left Hand ..... Page 292

Main Cylinder  
Three Stage FFL  
Right Hand ..... Page 294

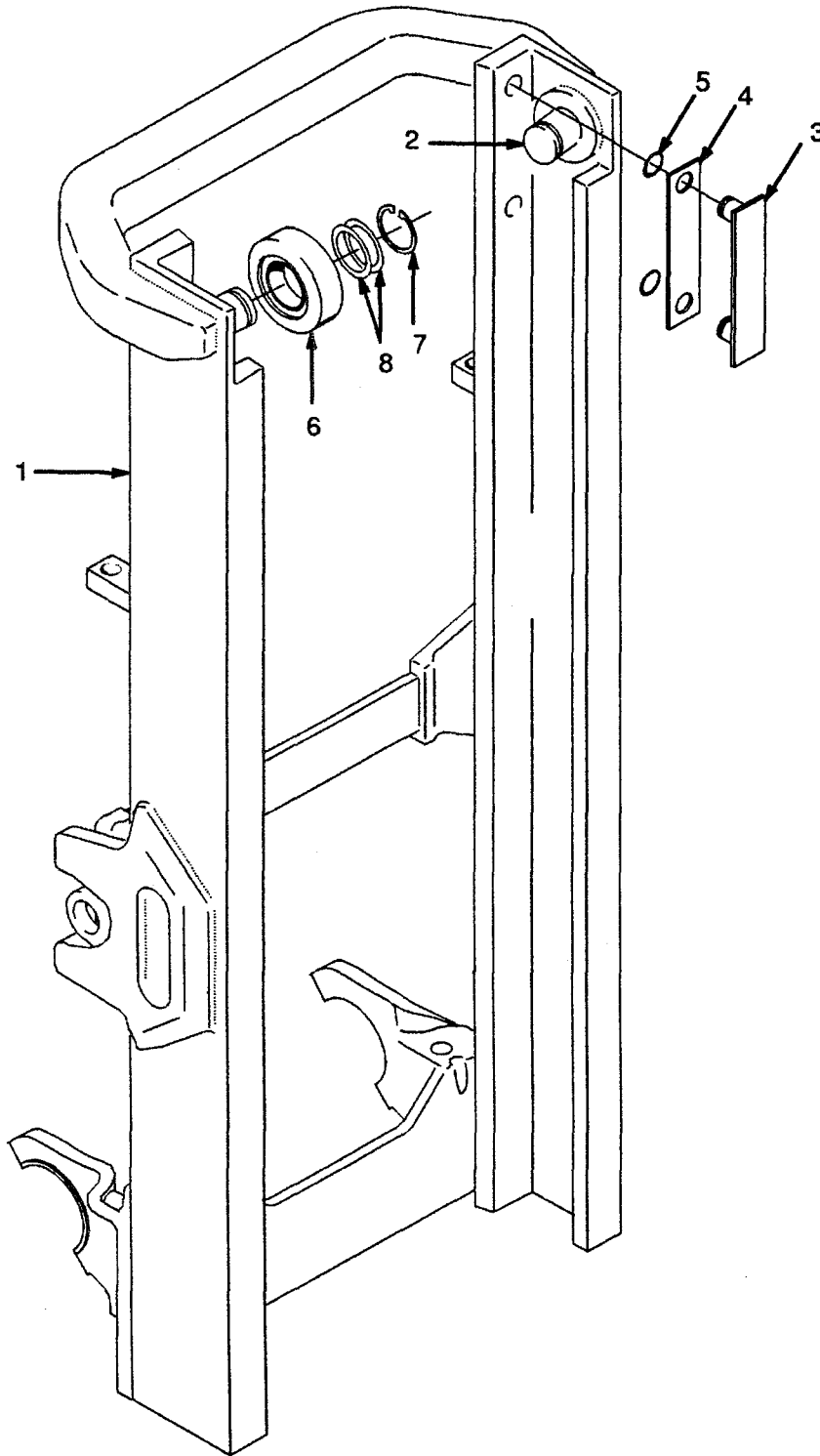
Main Lift  
Three Stage FFL  
First Used on S/N A554B-2100 ..... Page 288

Main Lift  
Three Stage FFL  
Last Used on S/N A554B-2099 ..... Page 286

Mast Installation  
Three Stage FFL ..... Page 302

Outer Mast  
Three Stage FFL ..... Page 280

## OUTER MAST THREE STAGE FFL (Figure 131)



**FORK  
 TWO-STAGE LFL**

REF NO.	NAME OF PART 1 2 3 4	STANDARD TAPER		FULL BOTTOM TAPER	QTY
		PART NO.			
1	Fork	40 mm x 80 mm	40 mm x 100 mm	40 mm x 100 mm	2
	762 mm		1350344		
	900 mm	1338128	1352326		
	914 mm	1350337	1350345	1352332	
	1000 mm	1350341	1352327		
	1067 mm	1350338	1350347	1352333	
	1100 mm	1350342	1352328		
	1150 mm	1338130	1352330		
	1200 mm	1350343	1352329		
	1219 mm	1350339	1350348	1352334	
	1372 mm	1350340	1350349		
	1524 mm		1352325		
2	Latch	369795	369795	369795	1

**NOTE: OTHER FORK DIMENSIONS AVAILABLE ON REQUEST, CONTACT YOUR HYSTER DEALER.**