

ENGINE

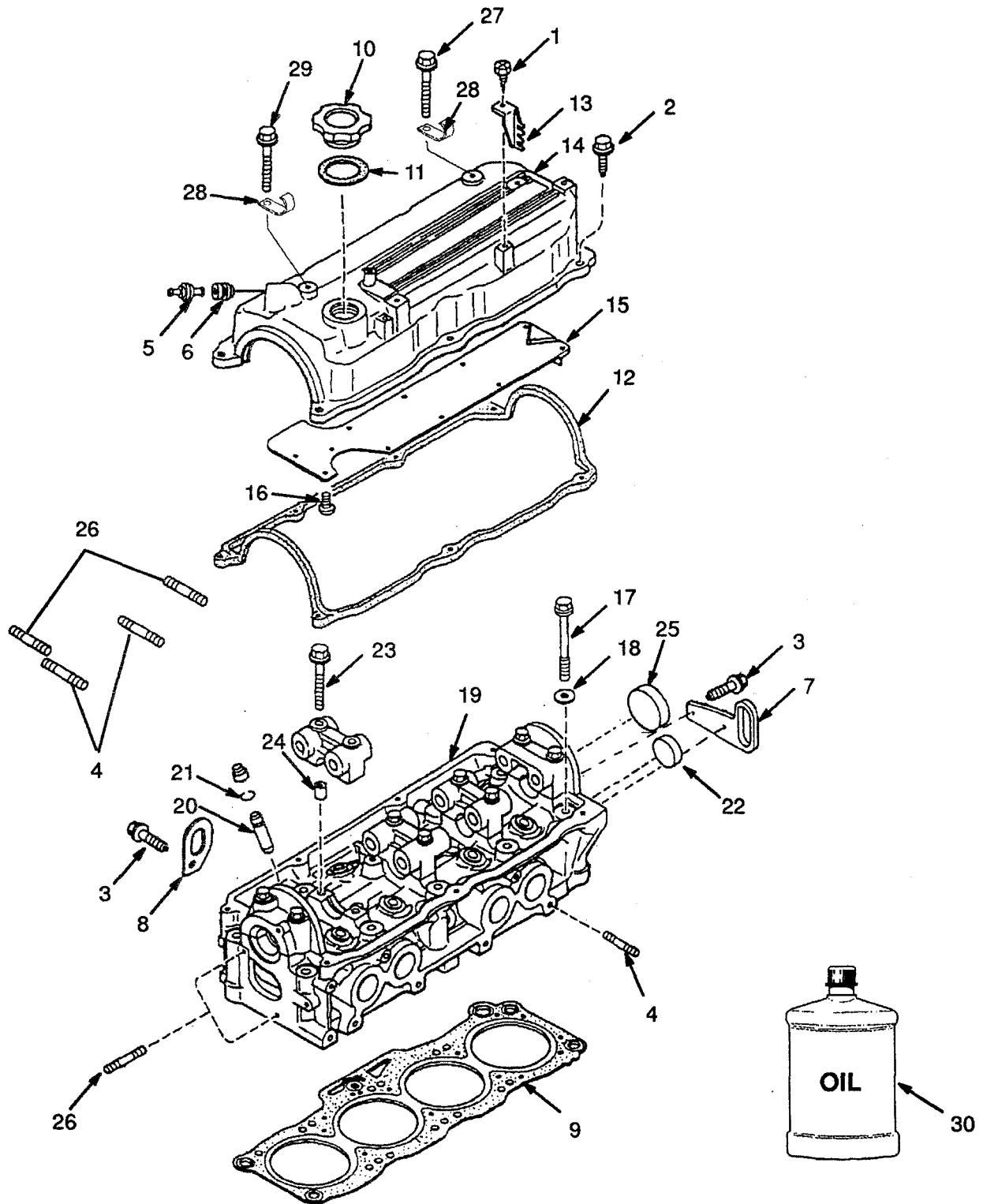
Camshaft and Valves Diesel 2,5L	Page 56
Camshaft and Valves Petrol and LPG 2,0L	Page 34
Cooling System Diesel 2,5L	Page 62
Cooling System Petrol and LPG 2,0L	Page 42
Crankshaft and Piston Diesel 2,5L	Page 54
Crankshaft and Piston Petrol and LPG 2,0L	Page 32
Cylinder Block Diesel 2,0L	Page 50
Cylinder Block Petrol and LPG 2,0L	Page 28
Cylinder Head Diesel 2,5L	Page 48
Cylinder Head Petrol and LPG 2,0L	Page 26
Engine Electrical System Diesel 2,5L	Page 66
Engine Electrical System Petrol and LPG 2,0L	Page 38
Engine Mount Diesel 2,5L	Page 68
Engine Mount Petrol and LPG 2,0L	Page 46

ENGINE

Exhaust Diesel 2,5L	Page 70
Exhaust Petrol and LPG 2,0L	Page 72
Intake and Exhaust Manifold Diesel 2,5L	Page 58
Intake and Exhaust Manifold Petrol and LPG 2,0L	Page 36
Oil Pump and Filter Diesel 2,5L	Page 60
Oil Pump and Filter Petrol and LPG 2,0L	Page 40
Radiator and Hoses Diesel 2,5L	Page 64
Radiator and Hoses Petrol and LPG 2,0L	Page 44
Timing Gear Cover and Oil Sump Diesel 2,5L	Page 52
Timing Gear Cover and Oil Sump Petrol and LPG 2,0L	Page 30
Upswept Exhaust Diesel 2,5L	Page 74
Upswept Exhaust Petrol and LPG 2,0L	Page 76

CYLINDER HEAD PETROL AND LPG 2,0L

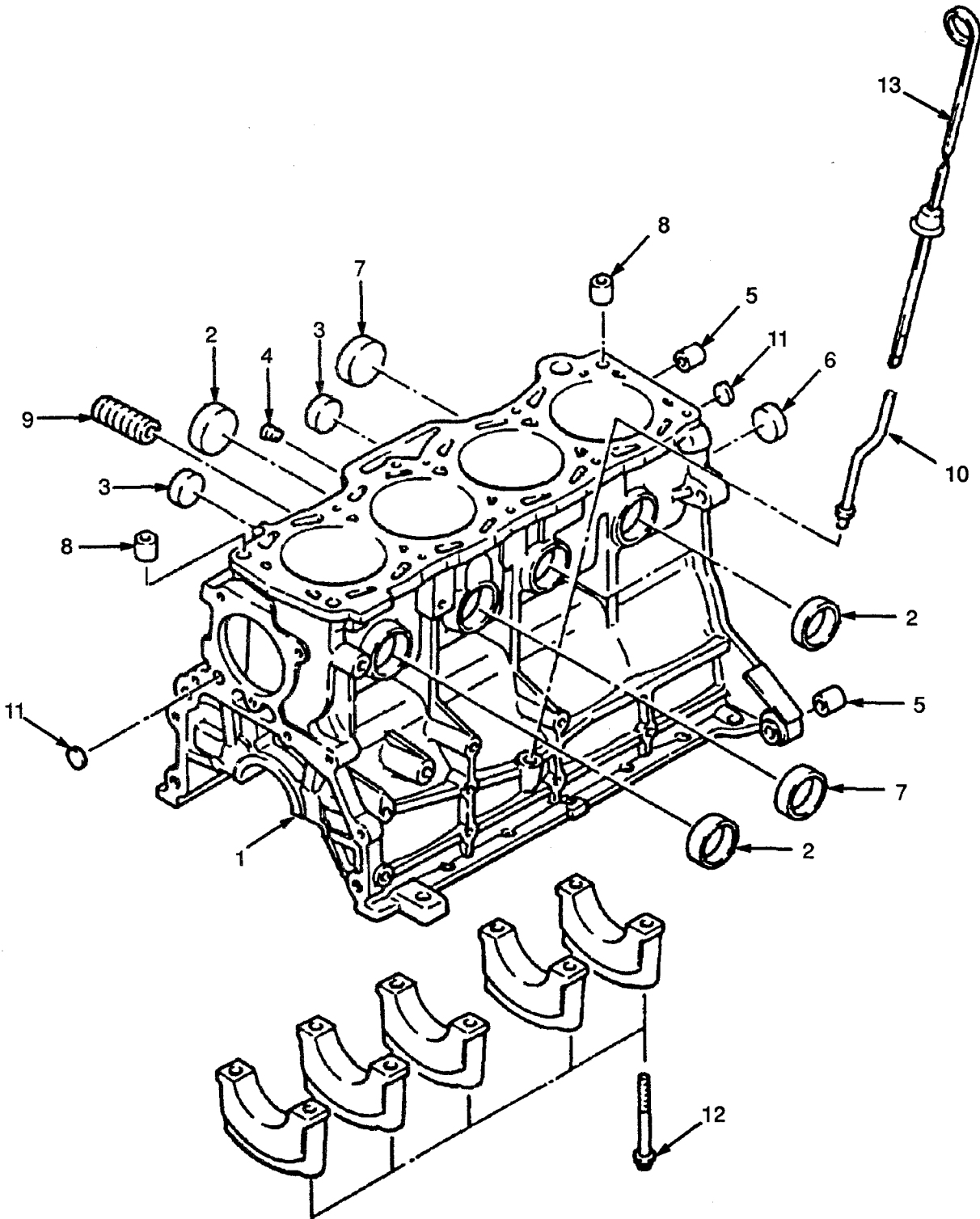
(Figure 12)



**CYLINDER HEAD
 PETROL AND LPG
 2,0L**

REF	PART NO.	NAME OF PART	QTY	REF	PART NO.	NAME OF PART	QTY
	2022647	Engine (Petrol)	1	15	1360884	Plate	1
	2022648	Engine (LPG)	1	16	1361896	Screw	2
1	1362000	Screw	2	17	1360880	Bolt	10
2	1362001	Bolt	7	18	1360881	Washer	10
3	1361898	Bolt	2	19	1360878	Cylinder Head	1
4	1361897	Stud	8	20	1360895	Valve Guide	8
5	1360893	PCV Valve	1	21	1360879	Clip	8
6	1360892	Seal	1	22	1362003	Plug	1
7	1360891	Support	17	23	1361894	Bolt	10
8	1360890	Support	1	24	1362002	Pin	10
9	2022494	Joint	1	25	1360882	Cap	1
10	1360887	Oil Cap	1	26	1361899	Stud	4
11	1360888	Joint	1	27	1361868	Screw	1
12	1360886	Joint	1	28	1369876	Clamp	2
13	1369875	Bracket	2	29	327327	Bolt	1
14	1360883	Cover	1	30	3043645	Engine Oil (5L)	AF

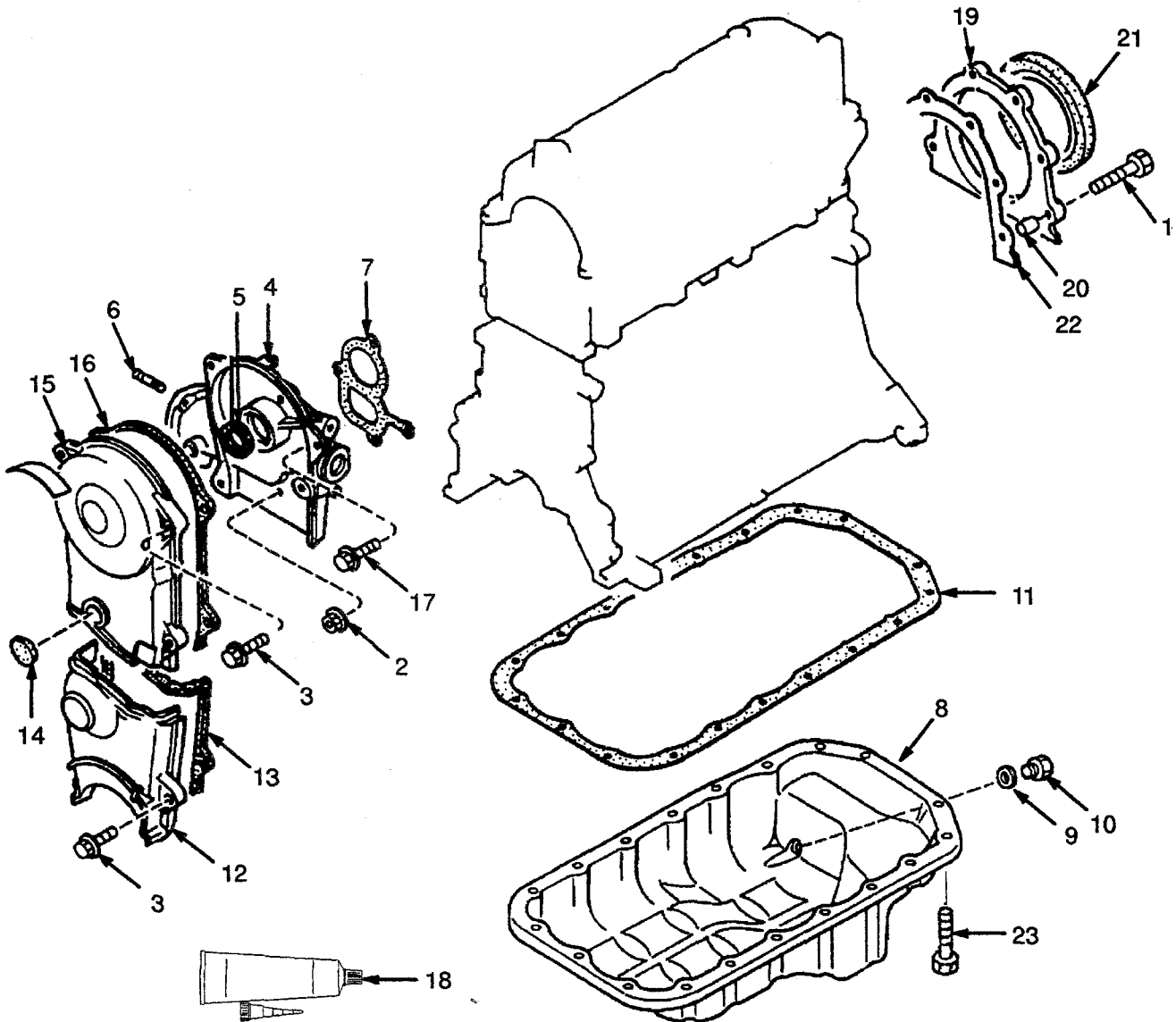
CYLINDER BLOCK PETROL AND LPG 2,0L (Figure 13)



**CYLINDER BLOCK
PETROL AND LPG
2,0L**

<u>REF</u>	<u>PART NO.</u>	<u>NAME OF PART</u>	<u>QTY</u>	<u>REF</u>	<u>PART NO.</u>	<u>NAME OF PART</u>	<u>QTY</u>
	2022647	Engine (Petrol)	1	7	1362007	Plug	2
	2022648	Engine (LPG)	8	1360896	Pin	2
1	1360897	Cylinder Block	1	9	1360898	Stud	1
2	1362003	Plug	4	10	1360899	Pipe	1
3	1362005	Plug	2	11	1361675	Plug	2
4	1366862	Plug	2	12	1361676	Bolt	10
5	1362008	Pin	2	13	1361677	Dipstick	1
6	1362009	Plug	1				

TIMING GEAR COVER AND OIL SUMP PETROL AND LPG 2,0L (Figure 14)

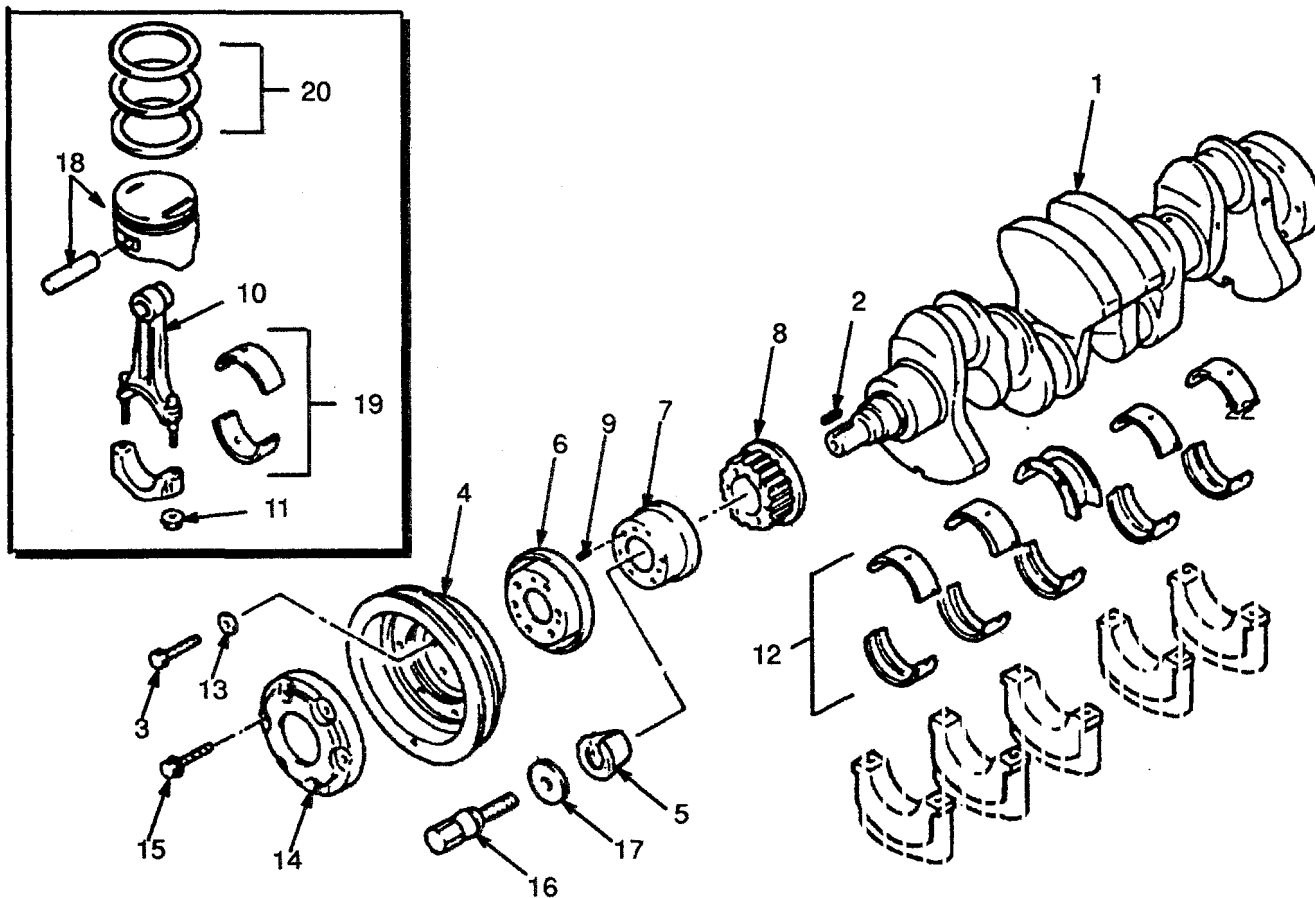


**TIMING GEAR COVER AND OIL SUMP
PETROL AND LPG
2,0L**

REF	PART NO.	NAME OF PART	QTY	REF	PART NO.	NAME OF PART	QTY
	2022647	Engine (Petrol)	1	12	1361683	Cover	1
	2022648	Engine (LPG)	1	13	1361684	Joint	1
1	1362011	Bolt	6	14	1361685	Cap	1
2	326504	Nut	2	15	1361686	Cover	1
3	1362001	Bolt	7	16	1361687	Joint	1
4	1369934	Housing (Front)	1	17	1369993	Bolt	2
5	1361688	Oil Seal	1	18	1370737	Silicone	AF
6	1362012	Stud	2	19 ^a	1361689	Rear Cover	1
7	1361679	Joint	1	20	1362010	Pin	2
8	1361680	Oil Sump	1	21	1361691	Oil Seal	1
9	1362015	Joint	1	22	1361690	Joint	1
10	1361681	Drain Plug	1	23	1370736	Hex Head Bolt	19
11	1361682	Oil Sump Joint	1				

^a Included In Short Block 1360877

CRANKSHAFT AND PISTON PETROL AND LPG 2,0L (Figure 15)

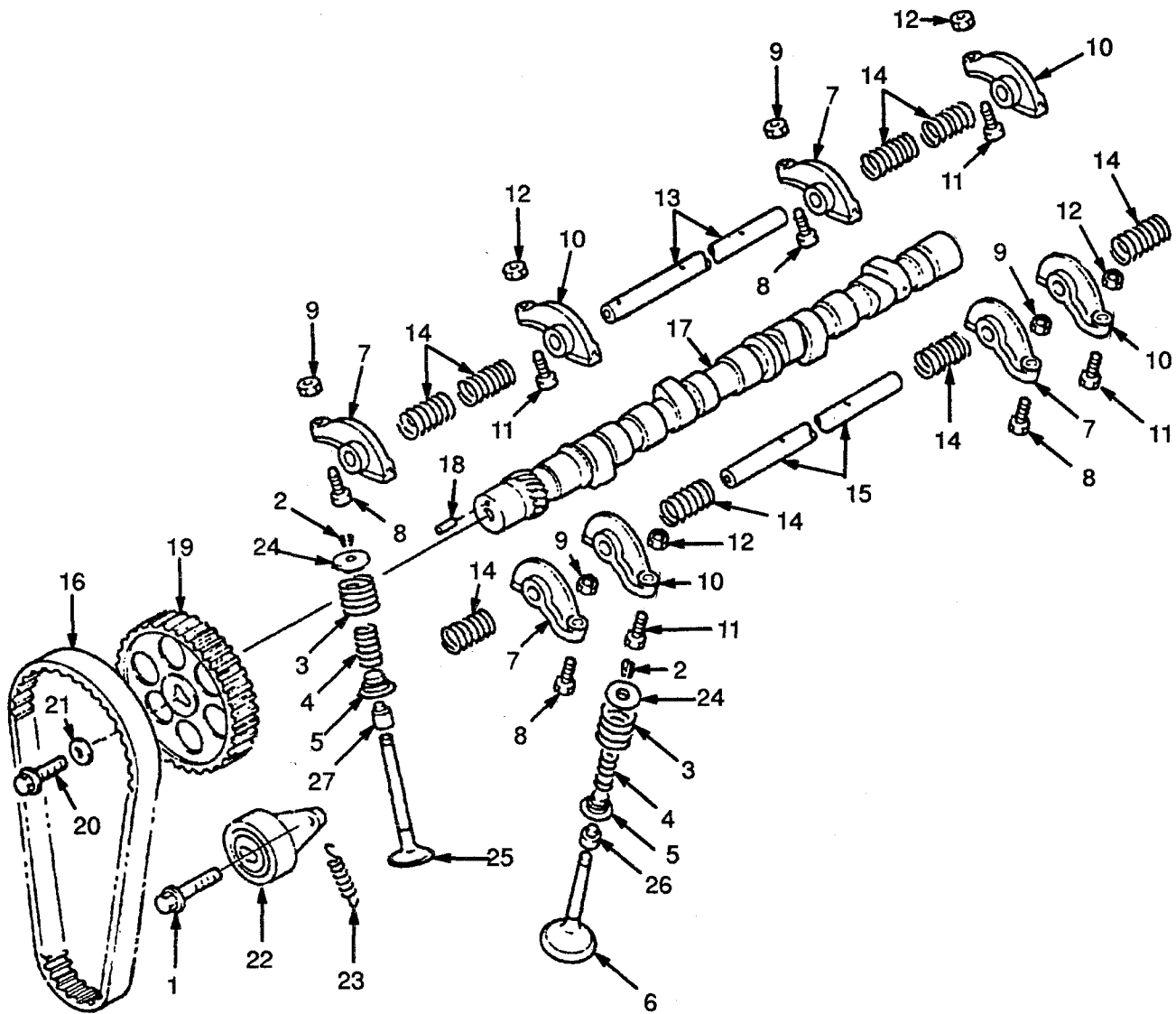


**CRANKSHAFT AND PISTON
PETROL AND LPG
2,0L**

REF	PART NO.	NAME OF PART	QTY	REF	PART NO.	NAME OF PART	QTY
	2022647	Engine (Petrol)	1	13	1369973	Washer	6
	2022648	Engine (LPG)	1	14	1369974	Plate	1
1	1369963	Crankshaft	1	15	1361875	Screw	6
2	1369964	Woodruff Key	1	16	1369975	Bolt	1
3	1369965	Bolt	6	17	1369976	Washer	1
4	1369966	Pulley	1	18 ^a	1361714	Piston (Standard)	4
5	1369967	Ring	1	18	1361715	Piston (0,25 mm)	4
6	1369968	Plate	1	18	1361716	Piston (0,50 mm)	4
7	1369969	Spacer	1	19 ^a	1361703	Bearing Set (Standard)	1
8	1369970	Pulley	1	19	1361704	Bearing Set (0,25 mm)	1
9	2022634	Pin	1	19	1361705	Bearing Set (0,50 mm)	1
10	1361694	Rod Assy	4	19	1361706	Bearing Set (0,75 mm)	1
11	1361695	Nut	8	20 ^a	1361707	Piston Ring Set (Standard)	1
12	1361710	Bearing Set (Standard)	1	20	1361709	Piston Ring Set (0,25 mm)	1
12	1361713	Bearing Set (0,25 mm)	1	20	1361708	Piston Ring Set (0,50 mm)	1
12	1361711	Bearing Set (0,50 mm)	1				
12	1361712	Bearing Set (0,75 mm)	1				

^a Included In Short Block 1360877

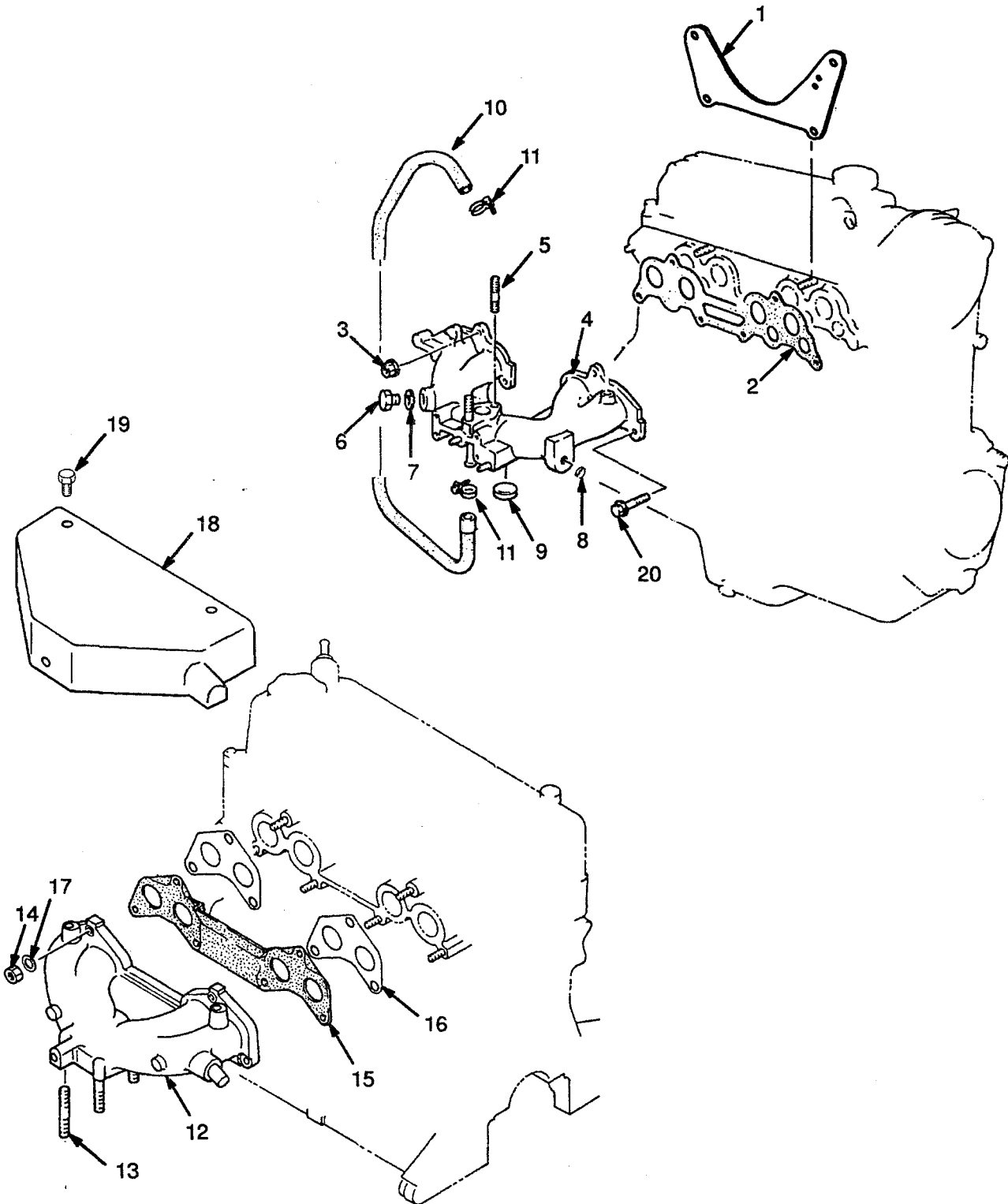
CAMSHAFT AND VALVES PETROL AND LPG 2,0L (Figure 16)



**CAMSHAFT AND VALVES
PETROL AND LPG
2,0L**

REF	PART NO.	NAME OF PART	QTY	REF	PART NO.	NAME OF PART	QTY
	2022647	Engine (Petrol)	1	14	1361731	Spring	8
	2022648	Engine (LPG)	1	15	1361732	Rocker Arm Shaft	1
1	1362016	Bolt	1	16	1361733	Timing Belt	1
2	326612	Keeper	16	17	2020769	Camshaft	1
3	1361722	Spring	8	18	1361717	Pin	1
4	1361723	Spring	8	19	1361735	Pulley	1
5	1361724	Seat	8	20	1361736	Bolt	1
6	1361725	Exhaust Valve	4	21	1361737	Washer	1
7	1361726	Rocker Arm	4	22	1361738	Tensioner	1
8	1361727	Adjusting Screw	4	23	1361739	Spring	1
9	1361728	Nut	4	24	1361721	Valve Seat	8
10	1361729	Rocker Arm	4	25	1361720	Intake Valve	4
11	1361727	Adjusting Screw	4	26	1361719	Exhaust Valve Seal	4
12	1361728	Nut	4	27	1361718	Intake Valve Seal	4
13	1361730	Rocker Arm Shaft	1				

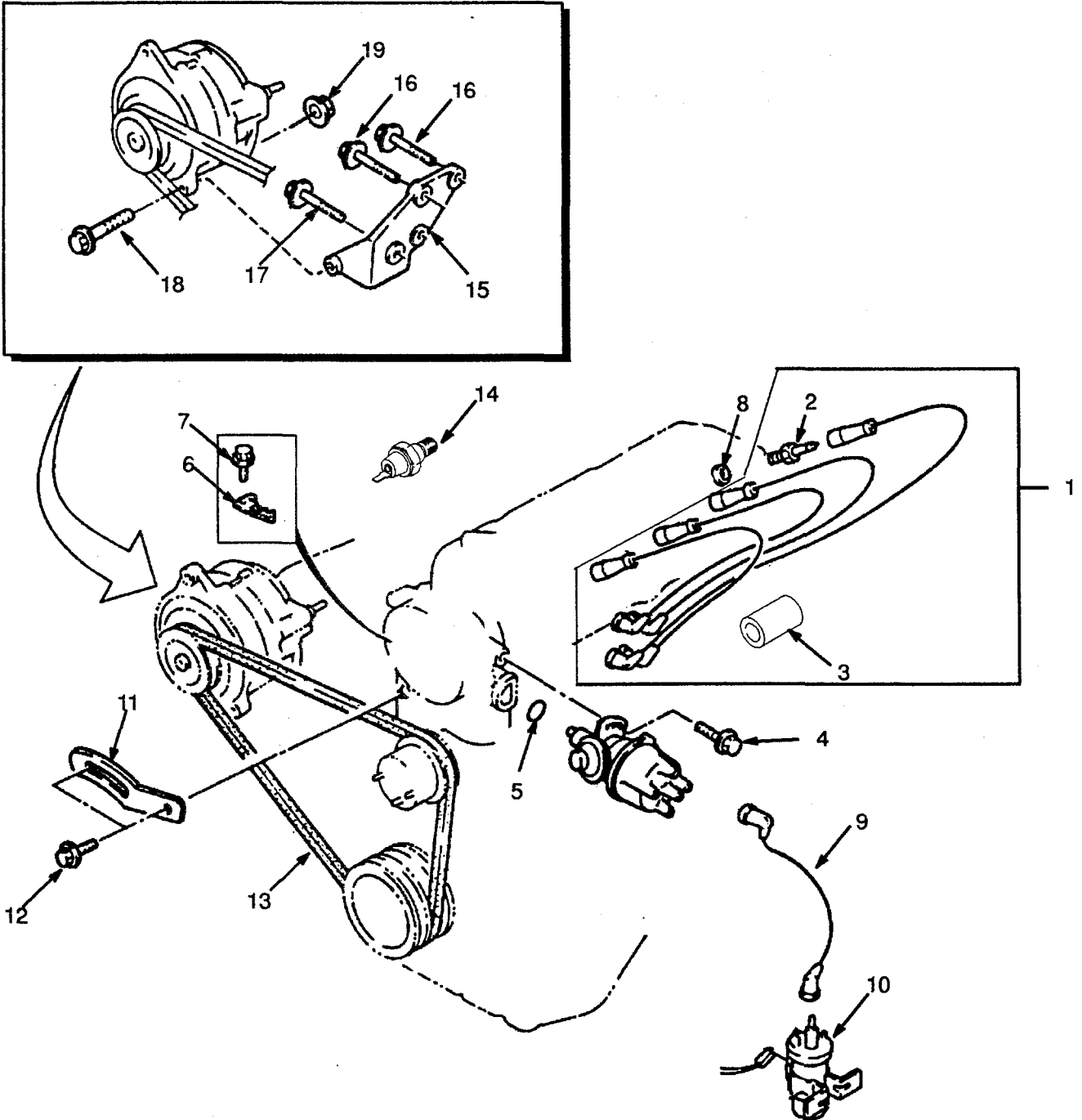
INTAKE AND EXHAUST MANIFOLD PETROL AND LPG 2,0L (Figure 17)



**INTAKE AND EXHAUST MANIFOLD
PETROL AND LPG
2,0L**

<u>REF</u>	<u>PART NO.</u>	<u>NAME OF PART</u>	<u>QTY</u>	<u>REF</u>	<u>PART NO.</u>	<u>NAME OF PART</u>	<u>QTY</u>
1	1370676	Support	1	11	2020745	Clamp	2
2	1361742	Joint	3	12	1370688	Exhaust Manifold	1
3	326504	Nut	4	13	1361745	Stud	4
4	2020783	Intake Manifold	1	14	2020755	Nut	6
5	1370682	Stud	2	15	1361747	Joint	1
6	326778	Plug (Petrol)	1	16	1370689	Joint	2
7	324718	Joint	1	17	1370690	Washer	6
8	1370683	Plug	1	18	1370691	Cover	1
9	1362005	Plug	1	19	1370692	Bolt	3
10	1370743	Hose	1	20	1361885	Bolt	2

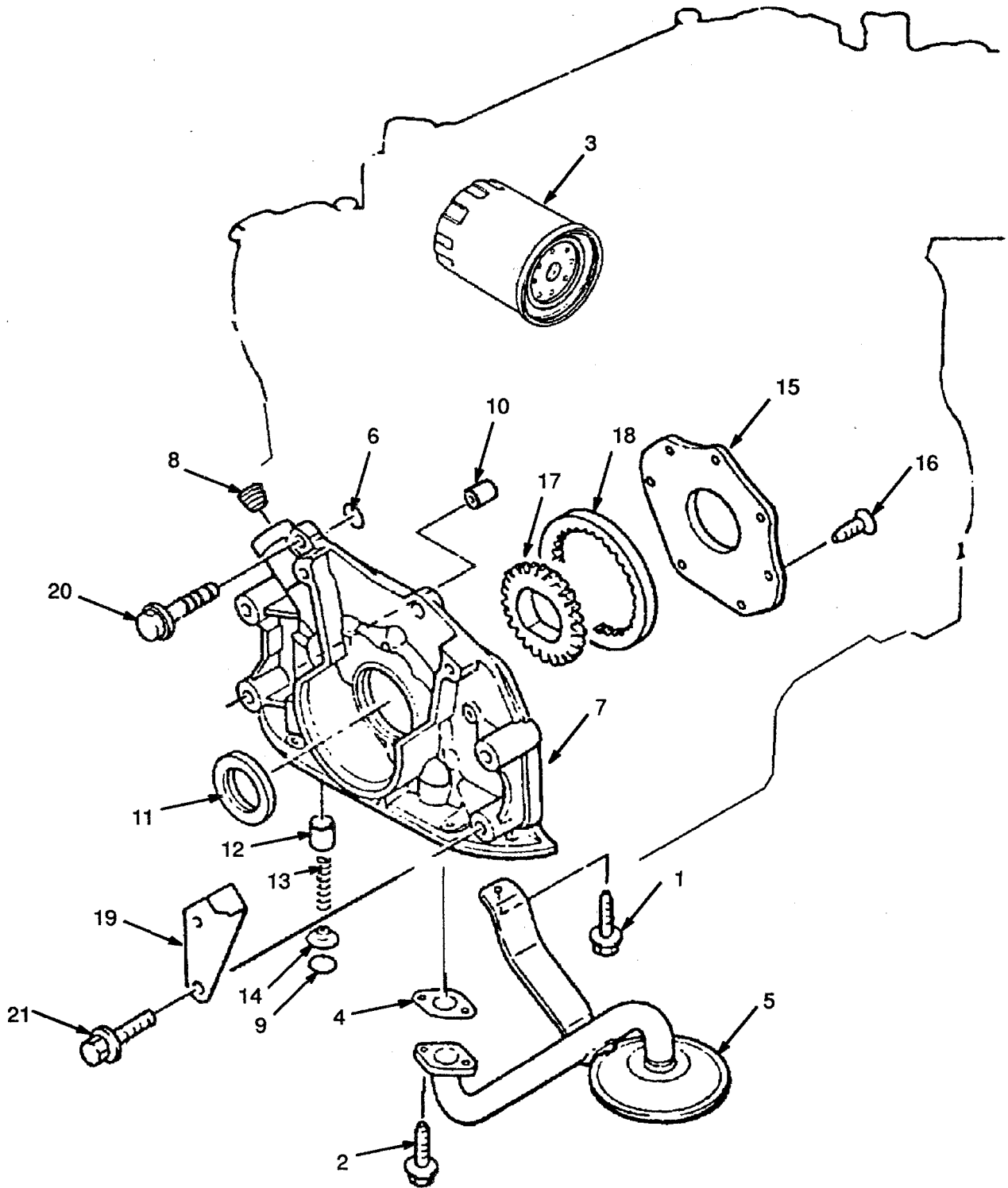
ENGINE ELECTRICAL SYSTEM PETROL AND LPG 2,0L (Figure 18)



**ENGINE ELECTRICAL SYSTEM
 PETROL AND LPG
 2,0L**

REF	PART NO.	NAME OF PART	QTY	REF	PART NO.	NAME OF PART	QTY
1	1369893	Kit-Ignition Cables	1	10	2021440	Ignition Coil	1
1	Cable	1	11	1361845	Strap	1
1	Cable	1	12	1361881	Bolt	2
1	Cable	1	13	1368841	Belt (Standard)	1
1	Cable	1	13	2022515	Belt (Tube and Fin Radiator)	1
2	1332683	Spark Plug	4	13	2022016	Belt (Low Noise)	1
3	1369894	Support	1	14	1361867	Temperature Sender	1
4	1361895	Bolt	1	15	1361846	Bracket	1
5	326850	O-Ring	1	16	1361891	Bolt	3
6	1361844	Bracket	1	17	1361888	Bolt	1
7	1369897	Bolt	1	18	1368844	Bolt	1
8	1369895	Packing	4	19	1368748	Nut	1
9	1369896	Ignition Cable	1				

OIL PUMP AND FILTER PETROL AND LPG 2,0L (Figure 19)



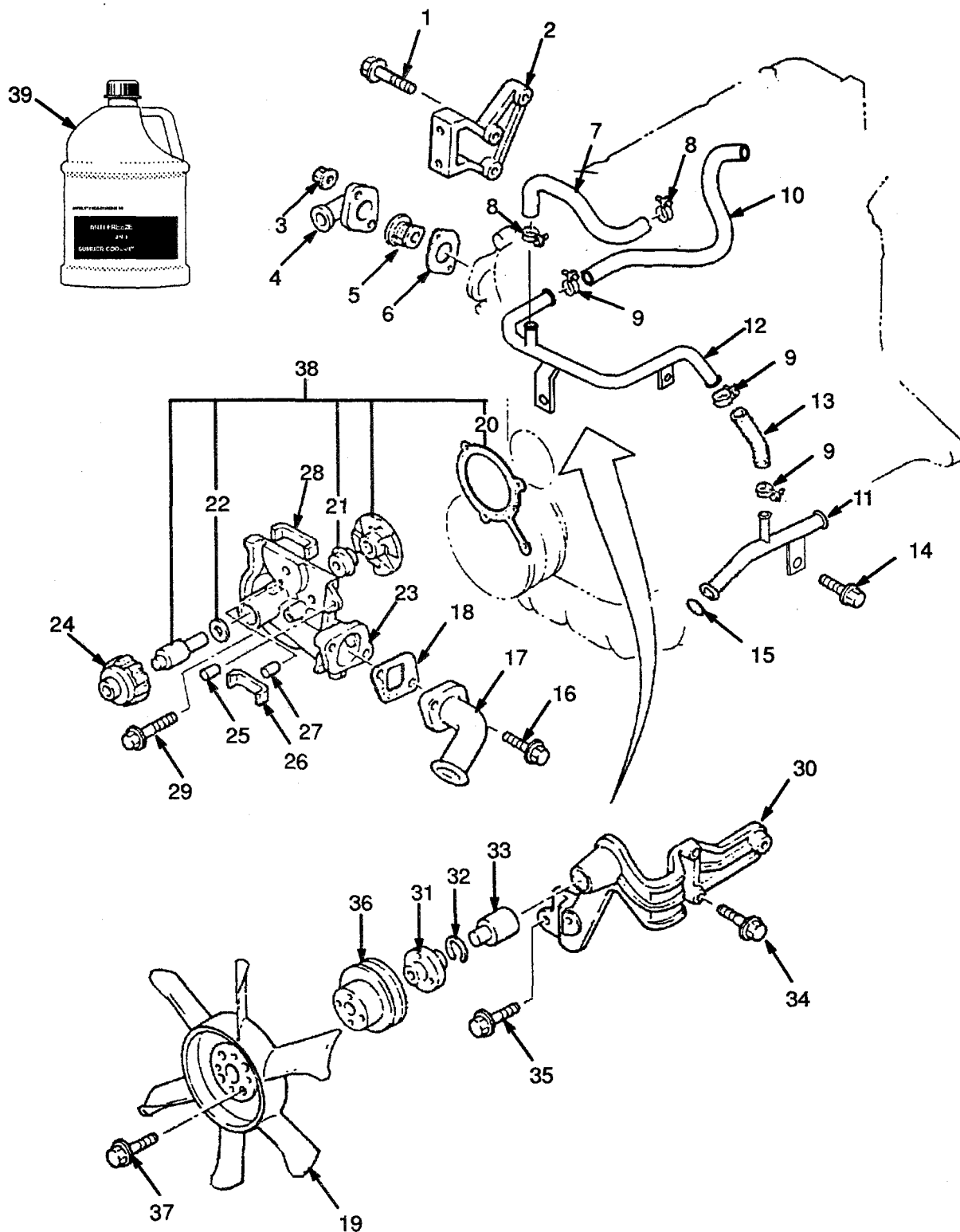
**OIL PUMP AND FILTER
PETROL AND LPG
2,0L**

<u>REF</u>	<u>PART NO.</u>	<u>NAME OF PART</u>	<u>QTY</u>	<u>REF</u>	<u>PART NO.</u>	<u>NAME OF PART</u>	<u>QTY</u>
1	1361868	Screw	1	12	326747	Plunger	1
2	1361878	Screw	2	13	326748	Spring	1
3	333642	Cartridge	2	14	326749	Seat	1
4	1361807	Joint	1	15	1361802	Cover	1
5	1361806	Strainer	1	16	1361803	Screw	7
6	1361801	O-Ring	1	17	1361804	Gear (Inner)	1
7	1361800	Oil Pump	1	18	1361805	Gear (Outer)	1
8	1368790	Plug	1	19	1369913	Plate	1
9	1361879	Circlip	1	20	1369914	Bolt	2
10	1361798	Pin	2	21	1361887	Screw	4
11	1361688	Oil Seal	3				

COOLING SYSTEM PETROL AND LPG

2,0L

(Figure 20)

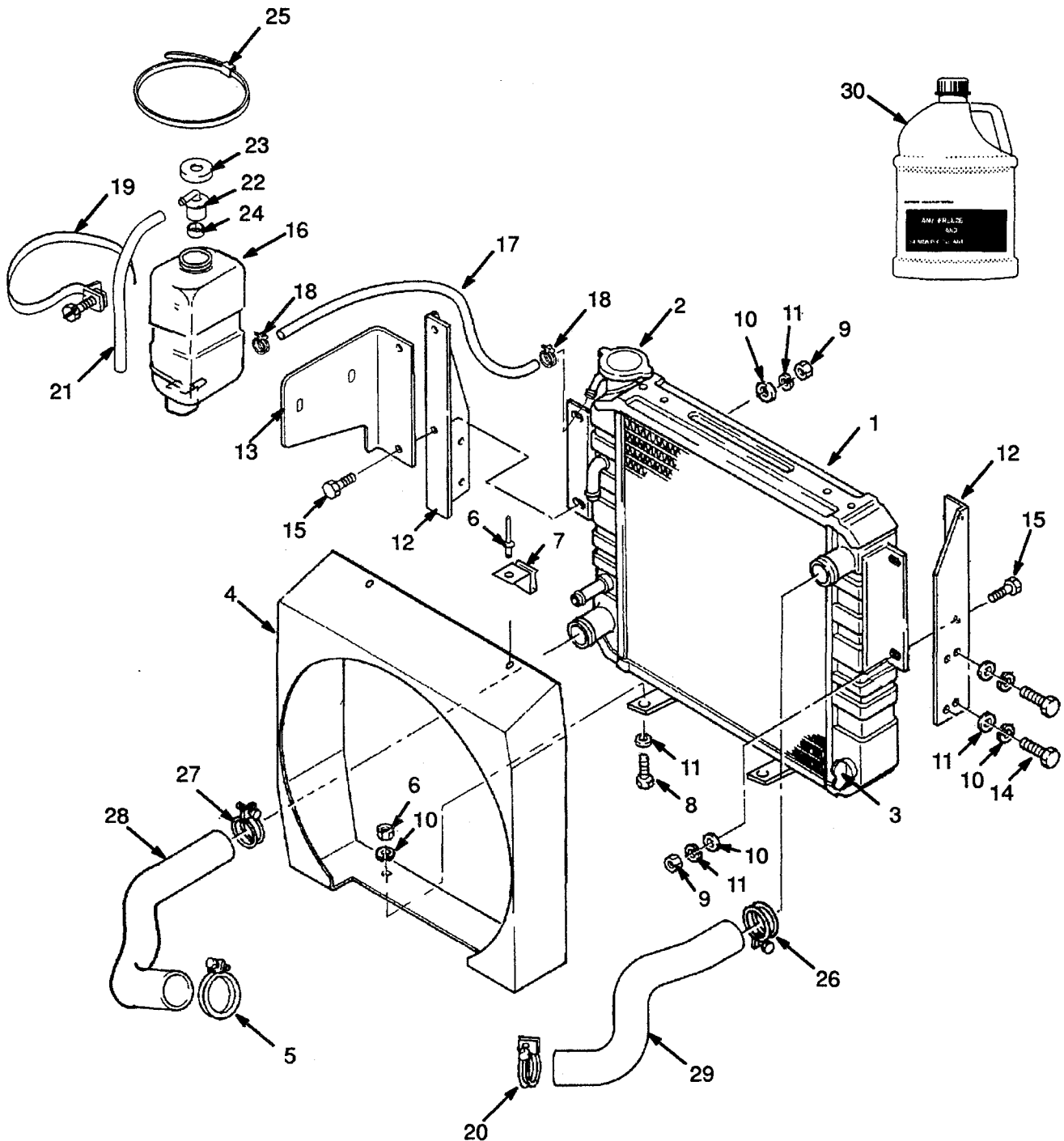


**COOLING SYSTEM
PETROL AND LPG
2,0L**

REF	PART NO.	NAME OF PART	QTY	REF	PART NO.	NAME OF PART	QTY
1	1361882	Bolt	3	25	1361880	Stud	1
2	1361829	Bracket	1	26	1361809	Seal	1
3	326504	Nut	2	27	1361834	Pin	1
4	1361821	Cover	1	28	1361810	Seal	1
5	1361820	Thermostat	1	29	1361875	Screw	3
6	1367191	Joint	1	30	1361830	Bracket	1
7	2022301	Hose	1	31	1361813	Hub	1
8	2020745	Clamp	2	32	1361835	Ring	1
9	1369990	Clamp	3	33	1361832	Shaft	1
10	2022303	Hose	1	34	1361884	Bolt	3
11	2022305	Pipe	1	35	324706	Bolt	2
12	2022302	Pipe	1	36 ^a	2022318	Pulley	1
13	2022300	Hose	1	36 ^b	2022510	Pulley	1
14	2022309	Bolt	1	37 ^c	1361831	Pulley	1
15	1361827	O-Ring	1	37	1361878	Bolt	4
16	324707	Bolt	2	38	2022319	Kit-Repair	1
17	1361818	Pipe	1	39	3043618	Coolant (5L)	AR
18	1361819	Joint	1	39	3043619	Antifreeze (5L)	AR
19	1361817	Fan	1	39	3061225	Coolant (25L)	AR
20	1361812	Joint	1	39	3061325	Antifreeze (25L)	AR
21	1370698	Seal	1				
22	1361815	Plate	1	^a	Standard		
23	2022312	Water Pump	1	^b	Tube and Fin Radiator		
24	1361816	Pulley	1	^c	Low Noise		

RADIATOR AND HOSES PETROL AND LPG 2,0L

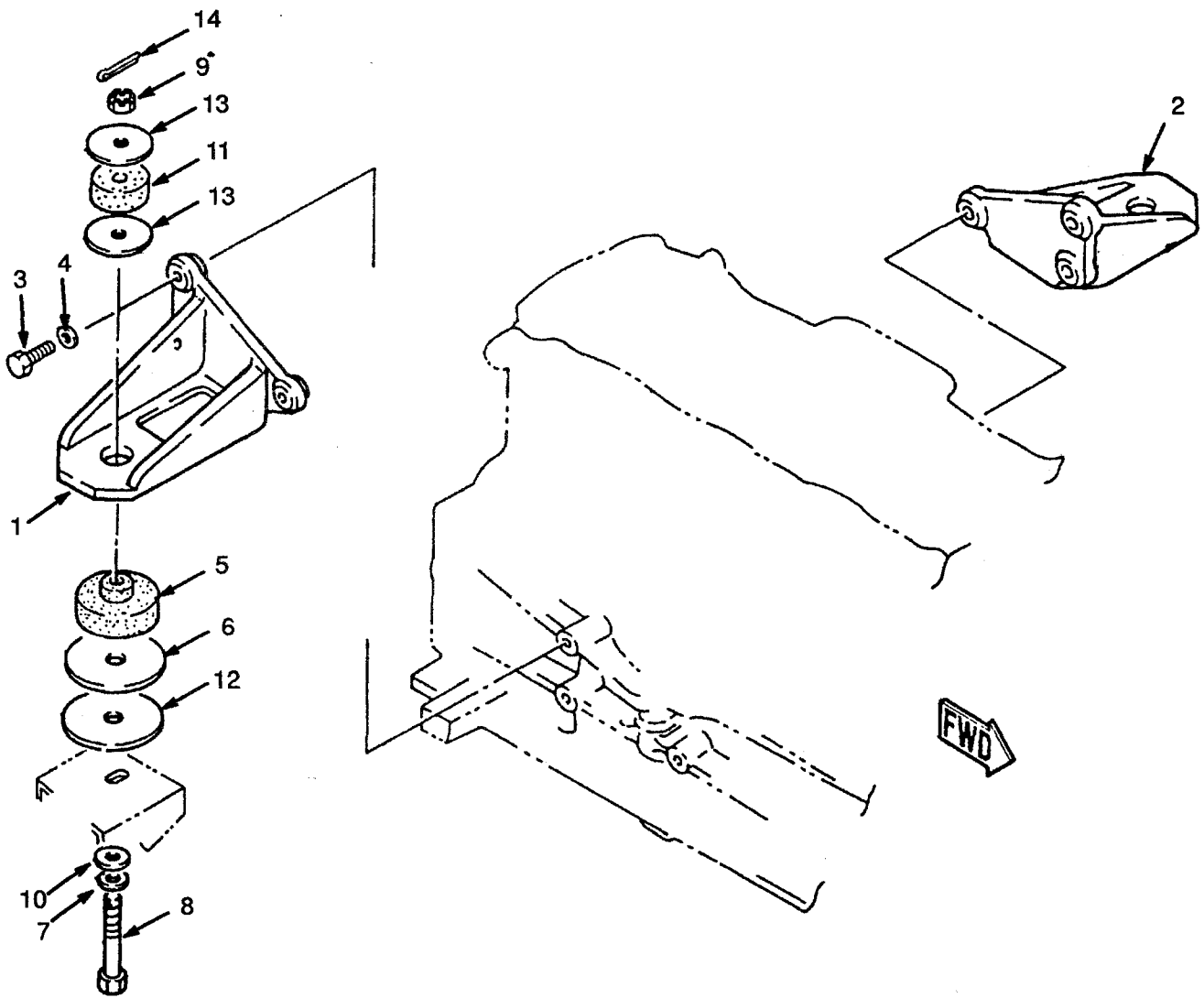
(Figure 21)



**RADIATOR AND HOSES
PETROL AND LPG
2,0L**

REF	PART NO.	NAME OF PART	QTY	REF	PART NO.	NAME OF PART	QTY
1	2021741	Radiator (Standard)	1	17	2022519	Tube	1
1	2022513	Radiator (Tube and Fin)	1	18	168718	Clamp	2
2	2022397	Cap	1	19	1345825	Strap	1
3	1367113	Drain Cock	1	20	2022556	Clamp	AR
4	2021745	Fan Shroud	1	20	2022557	Clamp (Optional)	1
5	2022557	Clamp	1	21	336573	Hose	1
5	2022558	Clamp (Optional)	1	22	345453	Outlet	1
6	222021	Rivet	2	23	345454	Cap	1
7	2021752	Clip	2	24	336550	Bush	1
8	136749	Hex Head Bolt	2	25	397676	Clamp	1
9	239503	Nut	6	26	127045	Clamp	1
10	320157	Washer	10	27	119236	Clamp	1
11	292681	Washer	10	28	2021762	Radiator Hose (Lower)	1
12	2021753	Bracket	2	29	2021765	Radiator Hose (Upper)	1
13	2022470	Bracket	1	30	3043618	Coolant (5L)	AR
14	2021233	Screw	4	30	3043619	Antifreeze (5L)	AR
15	136681	Hex Head Bolt	4	30	3061225	Coolant (25L)	AR
16	1347026	Reservoir	1	30	3061325	Antifreeze (25L)	AR

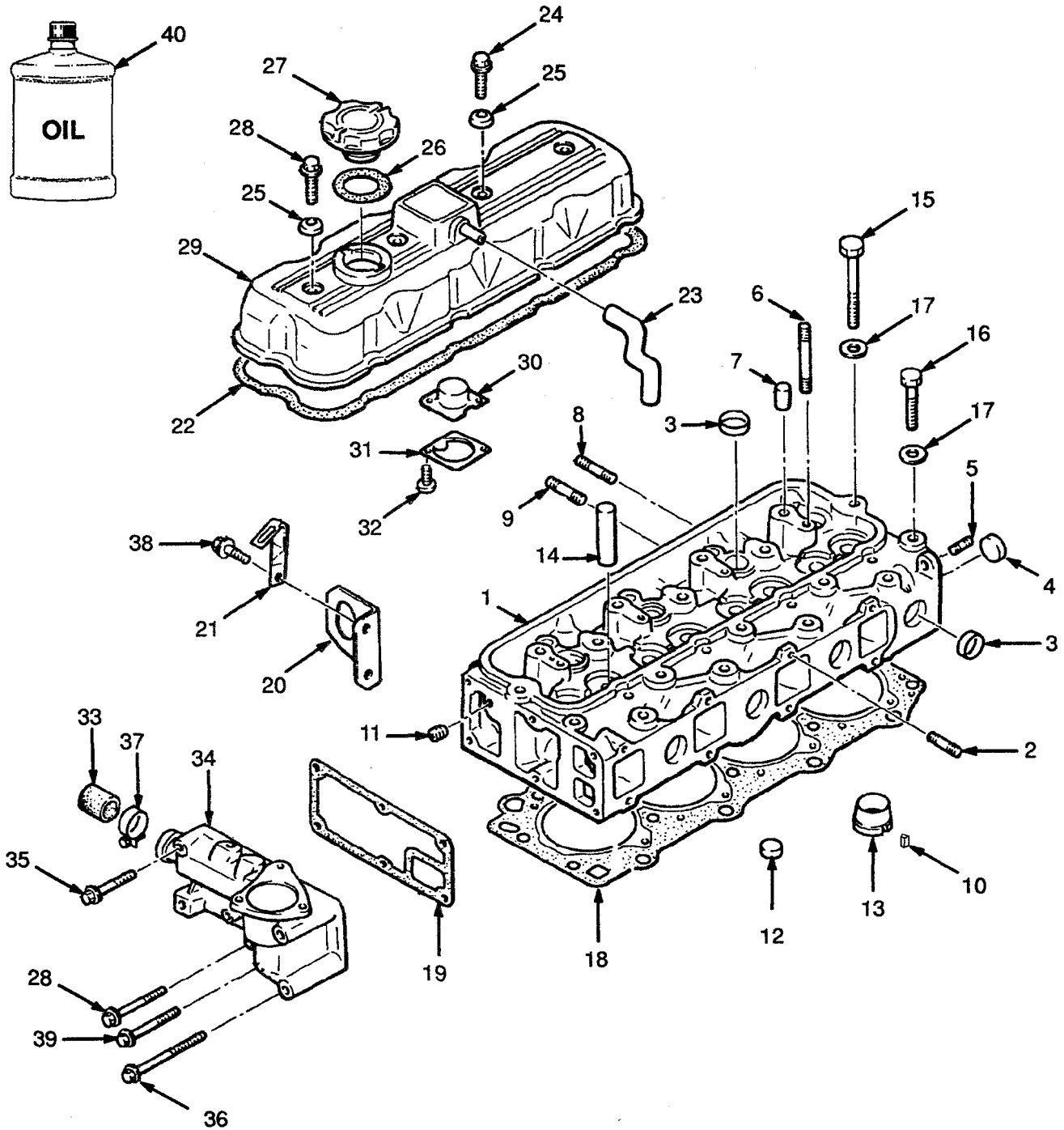
ENGINE MOUNT PETROL AND LPG 2,0L (Figure 22)



**ENGINE MOUNT
PETROL AND LPG
2,0L**

<u>REF</u>	<u>PART NO.</u>	<u>NAME OF PART</u>	<u>QTY</u>	<u>REF</u>	<u>PART NO.</u>	<u>NAME OF PART</u>	<u>QTY</u>
1	2021505	Bracket (RH)	1	8	2021511	Bolt	2
2	2021506	Bracket (LH)	1	9	302328	Nut	2
3	2022551	Screw	6	10	15177	Washer	2
4	296420	Washer	6	11	2021512	Rubber Washer	2
5	2021513	Rubber Washer	2	12	2021517	Washer	AR
6	2021516	Rubber Washer	2	13	2021515	Washer	4
7	296422	Washer	2	14	15223	Split Pin	2

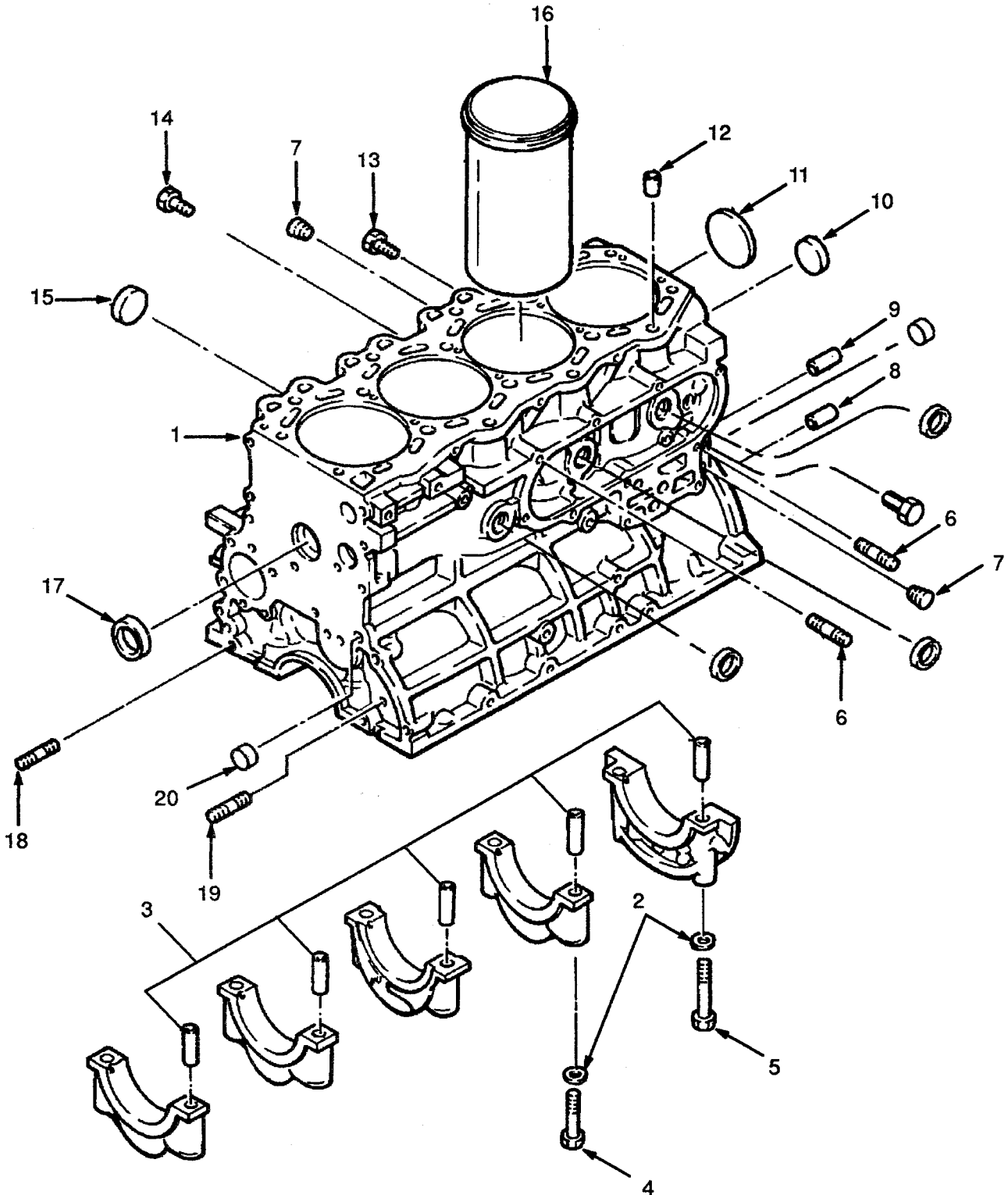
CYLINDER HEAD DIESEL 2,5L (Figure 23)



**CYLINDER HEAD
DIESEL
2,5L**

REF	PART NO.	NAME OF PART	QTY	REF	PART NO.	NAME OF PART	QTY
1	1366853	Cylinder Head	1	21	1366871	Clip	1
2	1366854	Stud	2	22	1366872	Joint	1
3	1362009	Plug	8	23	1366873	Breather Pipe	1
4	1366855	Cap	1	24	1366874	Bolt	1
5	1366856	Stud	1	25	1366875	Washer	1
6	1366857	Stud	4	26	1360888	Joint	1
7	1366858	Cap	4	27	1360887	Cap	1
8	1366859	Stud	4	28	1366876	Bolt	1
9	1366860	Stud	4	29	1366877	Valve Cover	1
10	1366861	Pin	4	30	1366878	Plate	1
11	1366862	Plug	1	31	1366879	Plate	1
12	1362005	Plug	3	32	1361896	Screw	2
13	1366864	Insert	4	33	1366880	Cap	1
14	1369866	Valve Guide	8	34	1366881	Case	1
15	1366865	Bolt	11	35	1366882	Bolt	4
16	1366866	Bolt	7	36	1362016	Bolt	1
17	1366867	Washer	18	37	1361886	Clamp	1
18	1366868	Joint	1	38	1370675	Bolt	2
19	1366869	Joint	1	39	1366883	Bolt	2
20	1366870	Support (Front)	1	40	3043646	Engine Oil (5L)	AR

CYLINDER BLOCK DIESEL 2,0L (Figure 24)

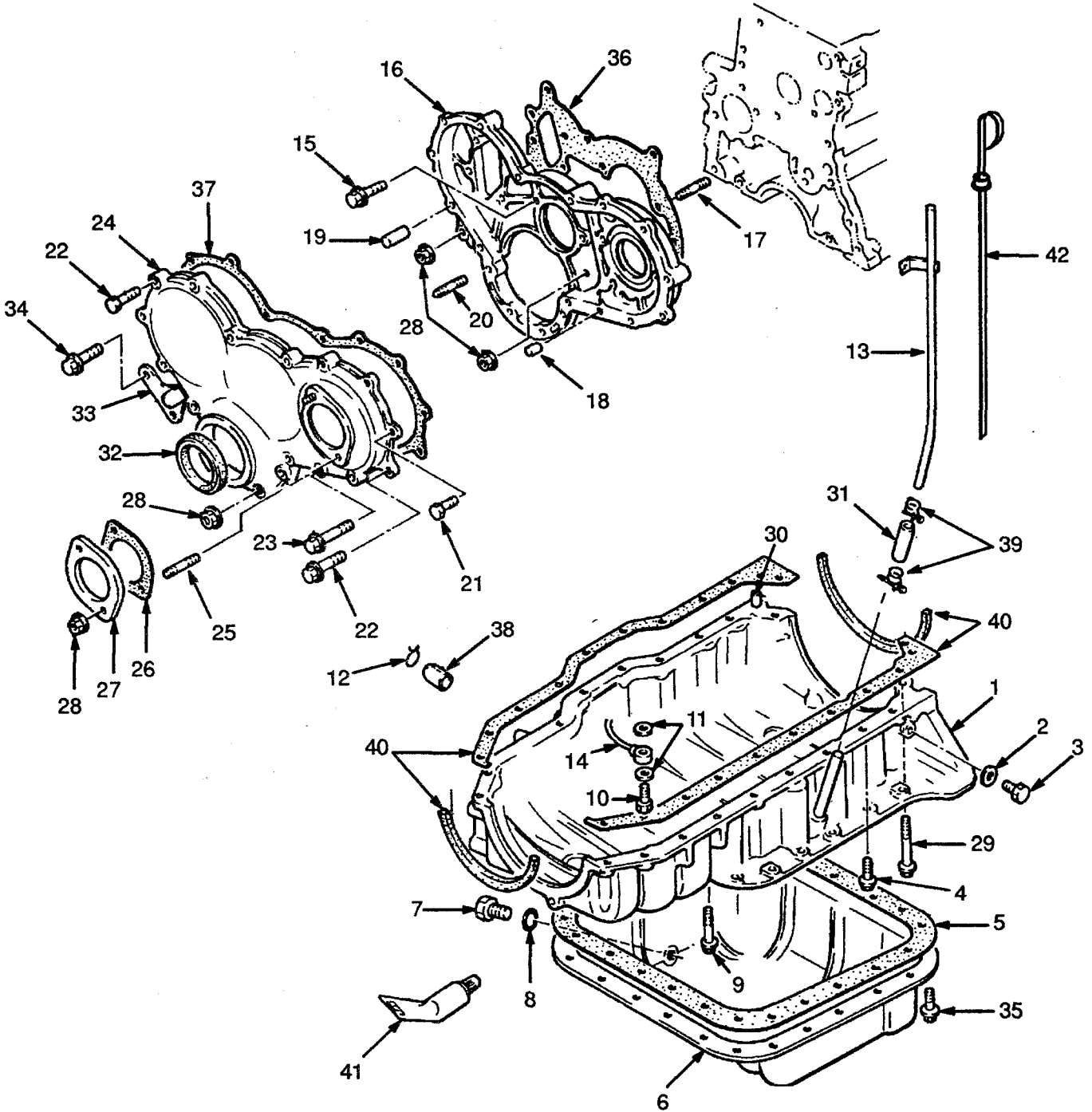


**CYLINDER BLOCK
 DIESEL
 2,0L**

REF	PART NO.	NAME OF PART	QTY	REF	PART NO.	NAME OF PART	QTY
	2022649	Engine	1	12	1366919	Pin	2
1 ^a	1369852	Cylinder Block	1	13	1369860	Plug	1
2	1366867	Washer	10	14	1369861	Plug	1
3	1369853	Pin	10	15	1362005	Plug	3
4	1369854	Bolt	8	16	1369862	Cylinder Liner	4
5	1369855	Bolt	2	17	1362003	Plug	1
6	1369856	Stud	9	18	1369863	Stud	1
7	1366862	Plug	3	19	1369864	Stud	1
8	1369857	Pin	1	20	1361675	Plug	1
9	1369858	Pin	2				
10	1362009	Plug	8				
11	1369859	Plug	1				

^a Included In Short Block 2022652

TIMING GEAR COVER AND OIL SUMP DIESEL 2,5L (Figure 25)

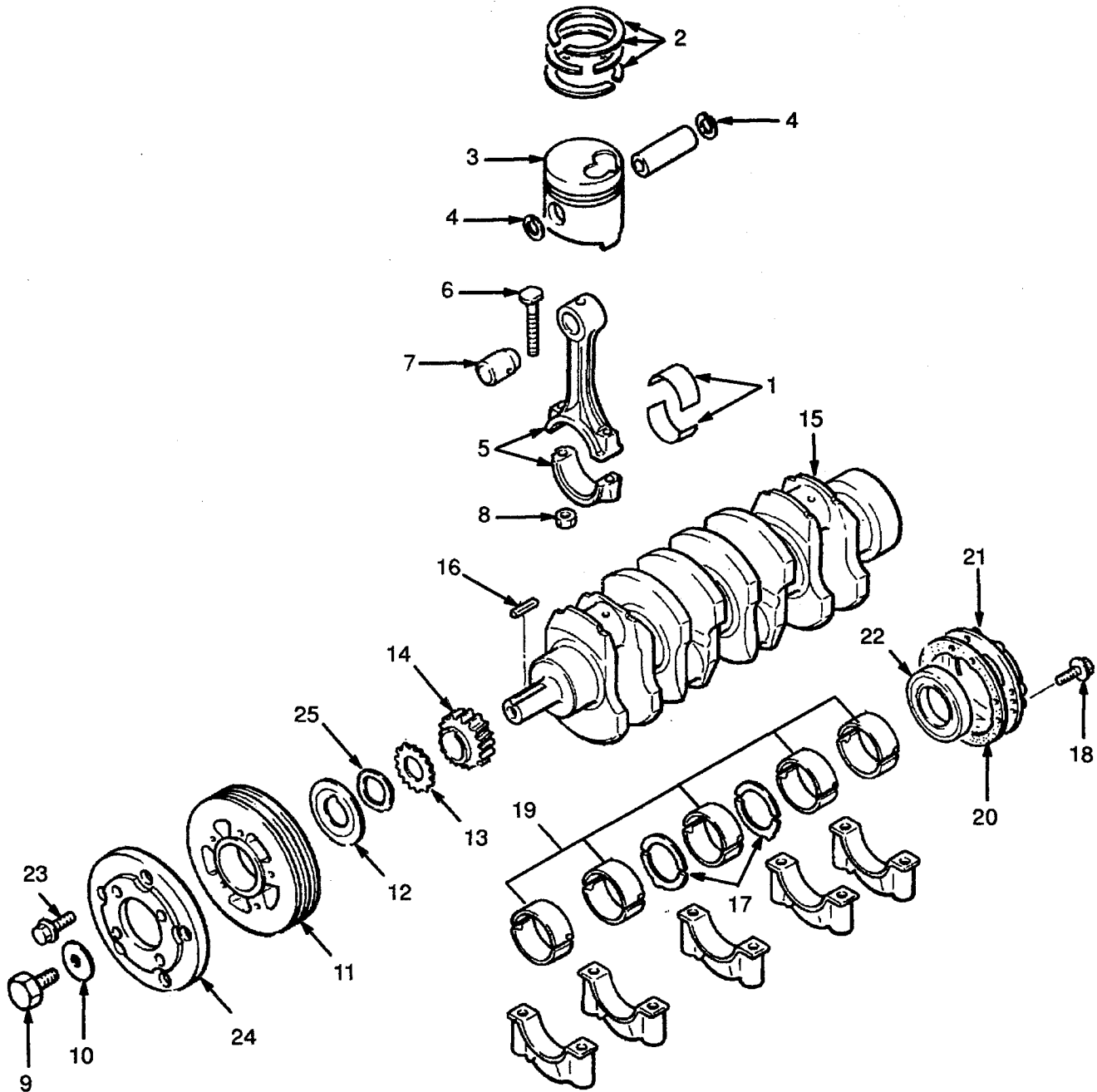


**TIMING GEAR COVER AND OIL SUMP
DIESEL
2,5L**

REF	PART NO.	NAME OF PART	QTY	REF	PART NO.	NAME OF PART	QTY
	2022649	Engine	1	22	1366916	Bolt	5
1	1366900	Block (Upper)	1	23	1366917	Bolt	6
2	1368743	Packing	1	24	1366921	Cover	1
3	1366902	Bolt	1	25	1366922	Stud	2
4	324707	Bolt	14	26	1366923	Joint	1
5	1369932	Joint	1	27	1366924	Cover	1
6	1366904	Oil Sump	1	28	326504	Nut	8
7	1361681	Drain Plug	1	29	1369933	Bolt	2
8	1362015	Joint	1	30	1366919	Pin	1
9	1366883	Bolt	6	31	1366920	Holder	1
10 ^a	1366905	Valve (Oil Jet)	4	32	1366925	Oil Seal	1
11 ^a	1366906	Joint	8	33	1366926	Plate	1
12	324709	Clip	1	34	1366927	Bolt	2
13	1366908	Pipe (Dipstick)	1	35	324721	Bolt	20
14 ^a	1366909	Oil Jet	4	36 ^a	2022479	Joint	1
15	324706	Bolt	6	37 ^a	2022480	Joint	1
16	1366911	Case	1	38	1366931	Cap	1
17	1366912	Stud	2	39	1366933	Clamp	2
18	1366913	Pin	1	40	2022478	Joint	1
19	1366914	Pin	1	41	1370737	Silicone	1
20	1361897	Stud	4	42	1369865	Dipstick	1
21	1366915	Bolt	2				

^a Included In Short Block 2022652

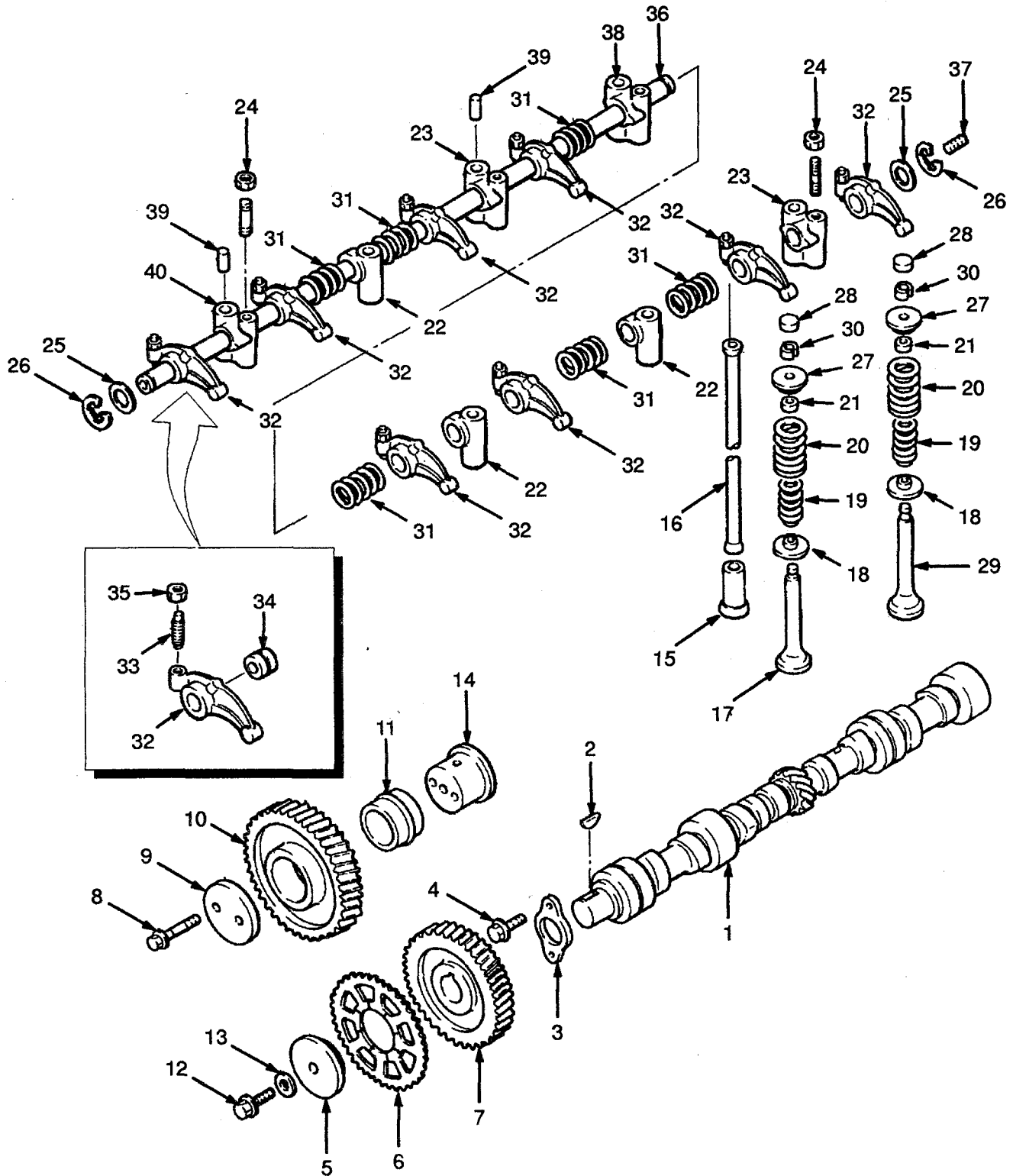
CRANKSHAFT AND PISTON DIESEL 2,5L (Figure 26)



**CRANKSHAFT AND PISTON
DIESEL
2,5L**

REF	PART NO.	NAME OF PART	QTY	REF	PART NO.	NAME OF PART	QTY
	2022649	Engine	1	14	1366951	Gear	
1 ^a	1366934	Bearing (Standard)	1	15 ^a	1366952	Crankshaft	
1	1366935	Bearing (0,762 mm)	1	16	1366953	Key	
1	1366936	Bearing (0,508 mm)	1	17 ^a	1366954	Kit-Washer (Standard)	
1	1366937	Bearing (0,254 mm)	1	17	1366955	Kit-Washer	
2 ^a	1366938	Piston Ring Set	1	18 ^a	1366916	Bolt	
3 ^a	1366939	Piston	4	19 ^a	245244	Bearing (Standard)	
4	1366940	Retaining Ring	2	19	1366957	Bearing (0,762 mm)	
5 ^a	1366941	Connecting Rod	4	19	1366958	Bearing (0,508 mm)	
6	1366942	Bolt	8	19	1366959	Bearing (0,254 mm)	
7	1366943	Bush	4	20 ^a	1366960	Joint	
8	1366944	Nut	4	21 ^a	1366962	Cap	
9	1366945	Bolt	1	22	1366961	Oil Seal	
10	1366946	Washer	1	23	1366963	Bolt	
11	1366947	Pulley	1	24	1366964	Drive Plate	
12	1366948	Plate	1	25	1369977	Spring	
13	1366950	Friction Gear	1				
				^a	Included In Short Block 2022652		

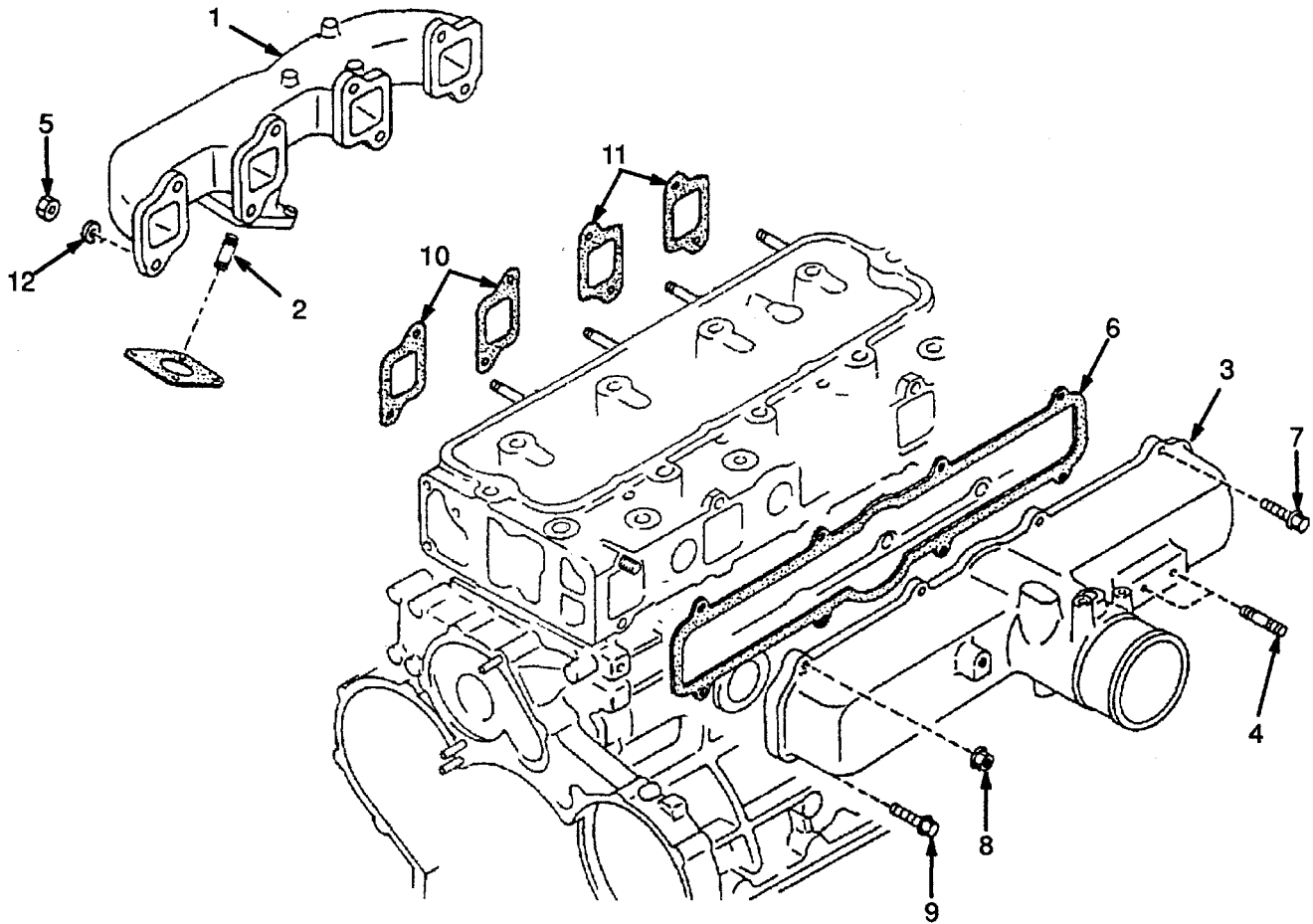
CAMSHAFT AND VALVES DIESEL 2,5L (Figure 27)



**CAMSHAFT AND VALVES
DIESEL
2,5L**

REF	PART NO.	NAME OF PART	QTY	REF	PART NO.	NAME OF PART	QTY
	2022649	Engine	1	21	1366985	Valve Seat	8
1	1366965	Camshaft	1	22	1366992	Bracket	3
2	1366966	Key	1	23	1366993	Bracket	2
3	1366967	Thrust Plate	1	24	1366994	Nut	2
4	1366874	Bolt	2	25	1366995	Washer	2
5	1366970	Locking Plate	1	26	1366996	Retaining Ring	2
6	1366971	Friction Gear	1	27	1366986	Valve Seat	8
7	1366972	Gear	1	28	1366987	Cap	8
8	1366883	Bolt	2	29	1366988	Intake Valve	4
9	1366973	Thrust Plate	1	30	1366989	Keeper	16
10	1366974	Idler Gear	1	31	1366990	Spring	6
11	1366975	Bush (Idler Gear)	1	32	1366991	Rocker Arm	8
12	1366976	Bolt	1	33	1368727	Screw	8
13	1366977	Washer	1	34	1368728	Bush	8
14	1366978	Spindle	1	35	2021077	Nut	8
15	1366979	Tappet	8	36	1366997	Shaft	1
16	1366980	Push Rod	8	37	1366998	Plug	2
17	1366981	Exhaust Valve	4	38	1366999	Bracket	1
18	1366982	Valve Seat	8	39	1368725	Pin	4
19	1366983	Spring	8	40	1368726	Bracket	1
20	1366984	Spring	8				

INTAKE AND EXHAUST MANIFOLD DIESEL 2,5L (Figure 28)



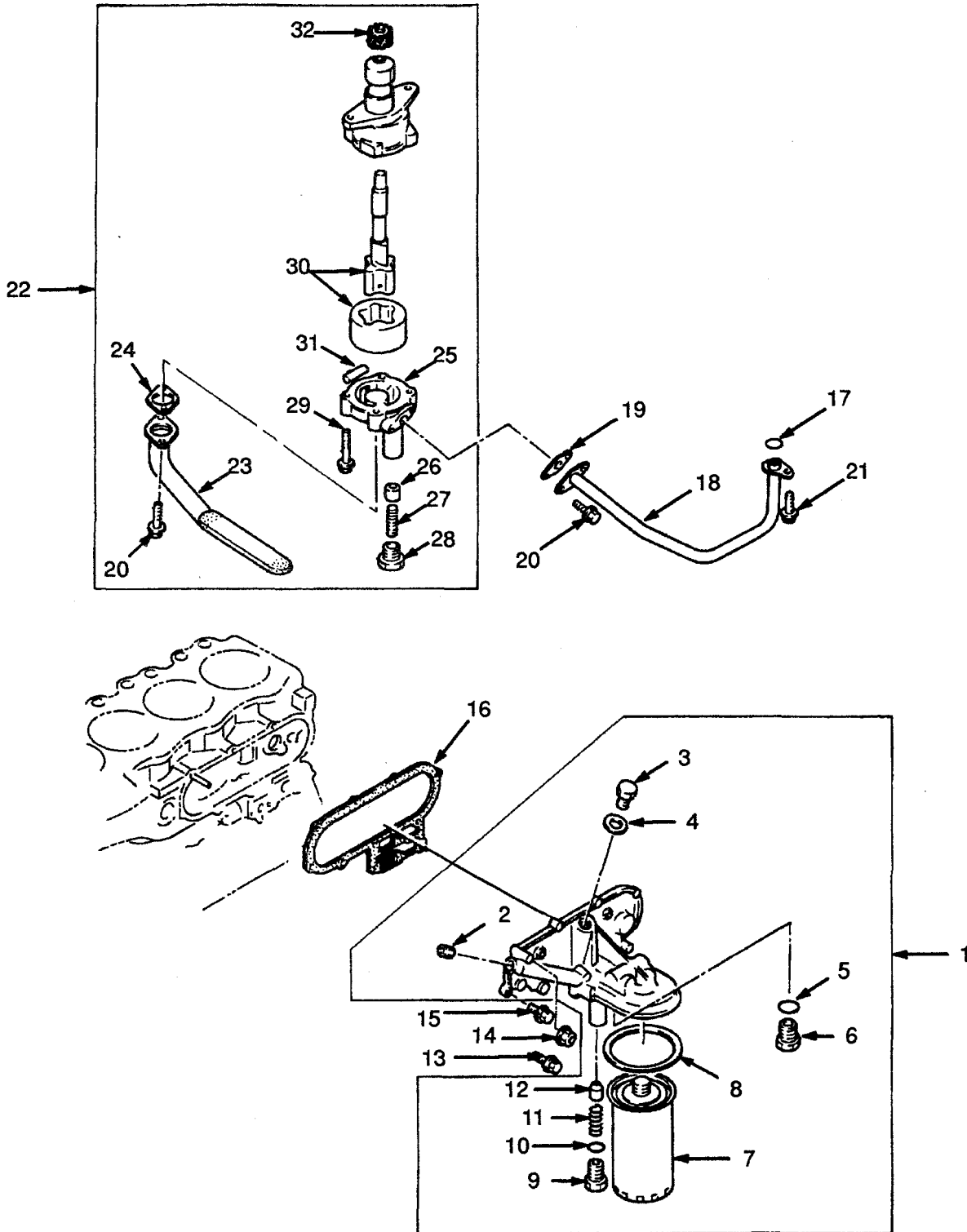
INTAKE AND EXHAUST MANIFOLD

DIESEL

2,5L

REF	PART NO.	NAME OF PART	QTY	REF	PART NO.	NAME OF PART	QTY
1	1368729	Exhaust Manifold	1	7	324707	Bolt	2
2	1368730	Stud	4	8	326504	Nut	5
3	1368732	Inlet Manifold	1	9	324706	Bolt	4
4	1368733	Stud	2	10	2022483	Joint	2
5	2020755	Nut	8	11	2022484	Joint	2
6	1368734	Joint	1	12	1368737	Washer	8

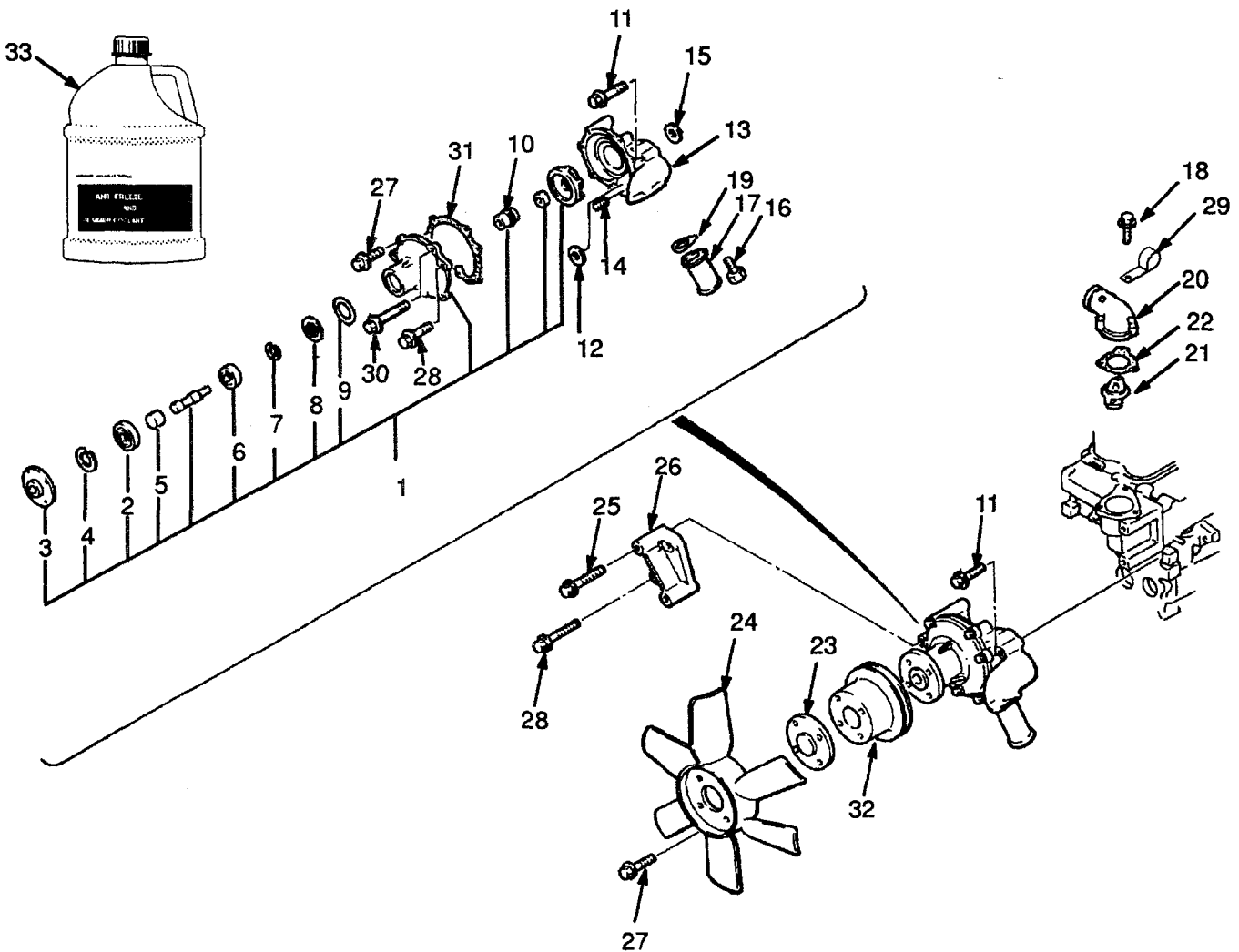
OIL PUMP AND FILTER DIESEL 2,5L (Figure 29)



**OIL PUMP AND FILTER
DIESEL
2,5L**

REF	PART NO.	NAME OF PART	QTY	REF	PART NO.	NAME OF PART	QTY
1	1368789	Oil Filter	1	17	1368802	O-Ring	1
2	1368790	Plug	1	18	1368803	Pipe	1
3	1368791	Plug	1	19	2022482	Joint	1
4	1368792	Packing	1	20	1368805	Bolt	4
5	1368793	O-Ring	1	21	324706	Bolt	1
6	1368794	Plug	1	22	1368807	Oil Pump	1
7	1368795	Cartridge	1	23	1368808	Strainer	1
8	1368796	Joint	1	24	2022481	Joint	1
9	1368797	Plug	1	25	1368810	Cover	1
10	1368798	O-Ring	1	26	1368800	Plunger	1
11	1368799	Valve Spring	1	27	1368811	Spring	1
12	1368800	Plunger	1	28	1368812	Plug	1
13	324707	Bolt	7	29	1368813	Bolt	4
14	326504	Nut	3	30	1368814	Shaft	1
15	1366876	Bolt	3	31	1368815	Pin	2
16	1368801	Joint	1	32	1368816	Gear	1

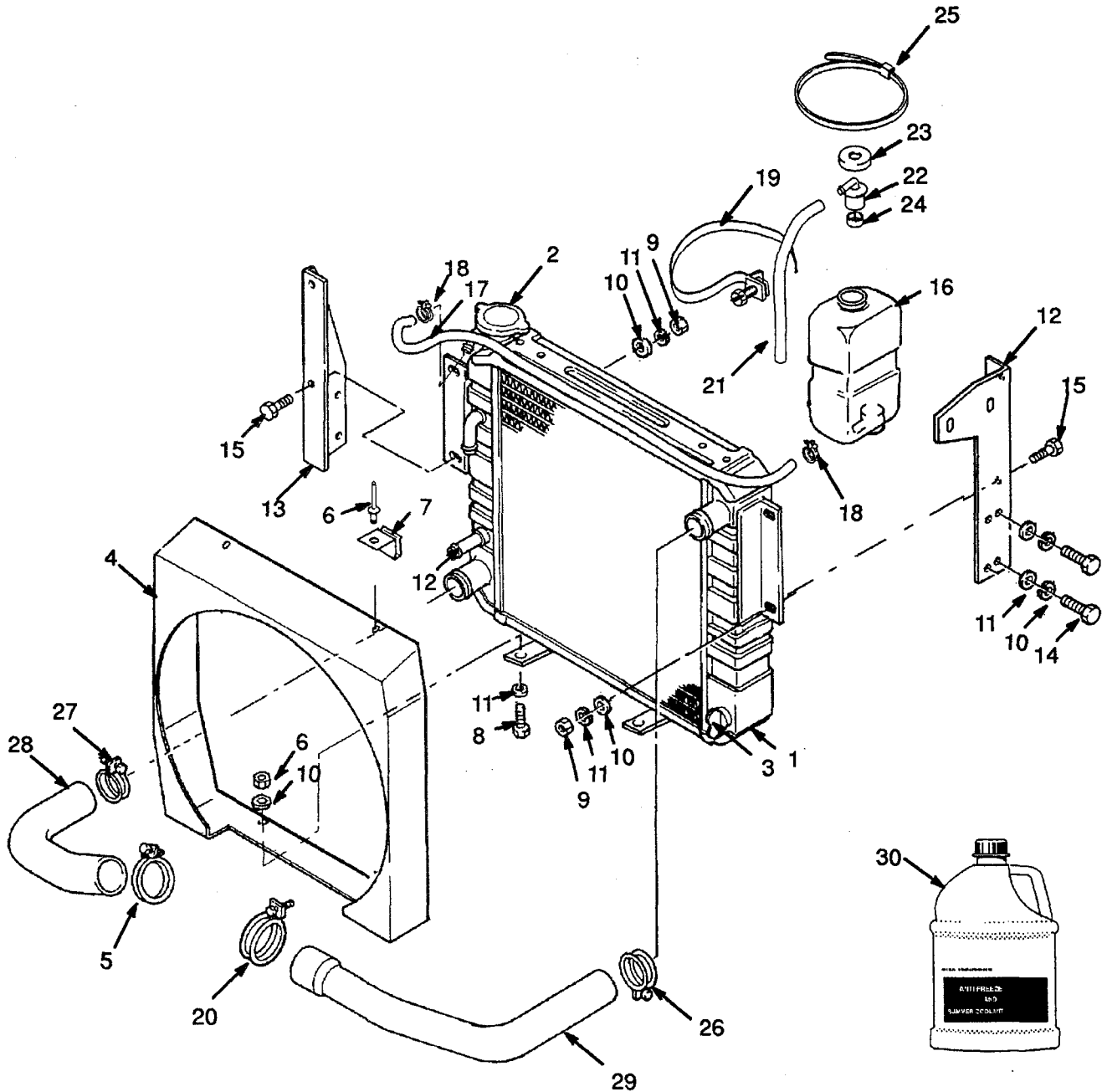
COOLING SYSTEM DIESEL 2,5L (Figure 30)



**COOLING SYSTEM
DIESEL
2,5L**

REF	PART NO.	NAME OF PART	QTY	REF	PART NO.	NAME OF PART	QTY
1	1368817	Body	1	20	1368834	Cover	1
2	1368818	Bearing	1	21	1368835	Thermostat	1
3	1368819	Pulley	1	22	2022486	Joint	1
4	1368820	Retainer Ring	1	23	1370719	Spacer	1
5	1368821	Spacer	1	24	1361817	Fan	1
6	1368822	Bearing	1	25	1366876	Bolt	2
7	1368823	Retaining Ring	1	26	1368838	Spacer	1
8	1368824	Plate	1	27	324706	Bolt	4
9	1368826	Plate	1	28	324707	Bolt	1
10	1368827	Seal	1	29	1368840	Clamp	1
11	1366917	Bolt	2	30	1368825	Bolt	6
12	1368829	Joint	1	31	1368828	Joint	1
13	1368830	Body	1	32	2021165	Pulley (Standard)	1
14	1366913	Pin	2	32	2022511	Pulley (Tube and Fin Radiator) ..	1
15	1368831	Joint	1	33	3043618	Coolant (5L)	AR
16	1366874	Bolt	3	33	3043619	Antifreeze (5L)	AR
17	1368833	Pipe	1	33	3061225	Coolant (25L)	AR
18	1366916	Bolt	3	33	3061325	Antifreeze (25L)	AR
19	1368734	Joint	1				

RADIATOR AND HOSES DIESEL 2,5L (Figure 31)



RADIATOR AND HOSES
DIESEL
2,5L

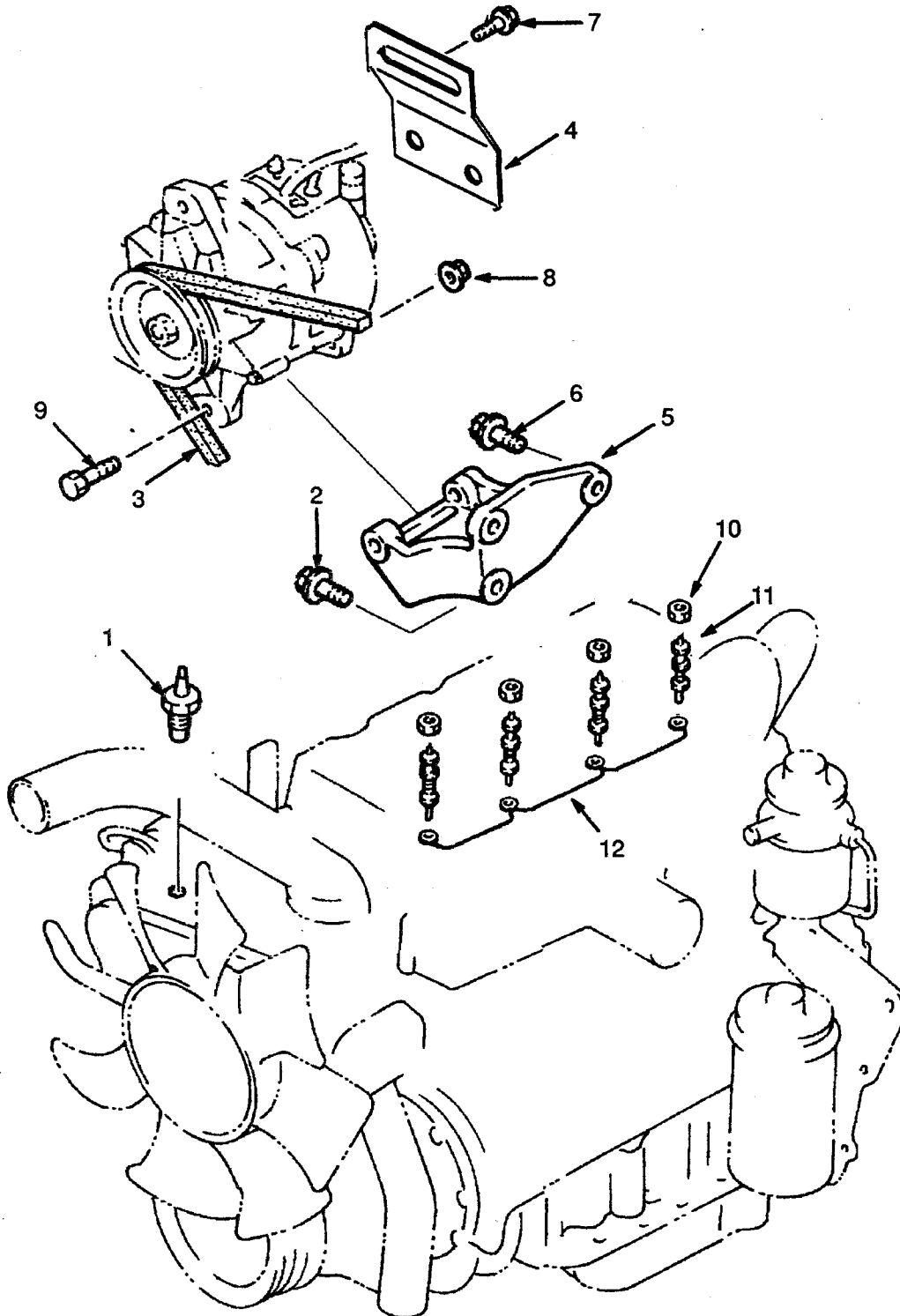
REF	PART NO.	NAME OF PART	QTY	REF	PART NO.	NAME OF PART	QTY
1	2021741	Radiator (Standard)	1	17	2022519	Tube	1
1	2022513	Radiator (Tube and Fin Radiator)	1	18	168718	Clamp	2
2	2022397	Cap	1	19	1345825	Strap	1
3	1367113	Drain Cock	1	20	2022726	Clamp	1
4	2021747	Fan Shroud	1	20	2022725	Hose Clamp (Optional)	1
5	2022558	Clamp	1	21	336573	Hose	1
6	222021	Rivet	2	22	345453	Outlet	1
7	2021752	Clip	2	23	345454	Cap	1
8	136749	Hex Head Bolt	2	24	336550	Bush	1
9	239503	Nut	6	25	397676	Clamp	1
10	320157	Washer	10	26	127045	Clamp	1
11	292681	Washer	10	27	119236	Clamp	1
12	2021753	Bracket	1	28	2021763	Radiator Hose (Lower)	1
13	2021754	Bracket	1	29	2021766	Radiator Hose (Upper)	1
14	2021233	Screw	4	30	3043618	Coolant (5L)	AF
15	136681	Hex Head Bolt	4	30	3043619	Antifreeze (5L)	AF
16	1347026	Reservoir	1	30	3061225	Coolant (25L)	AF
				30	3061325	Antifreeze (25L)	AF

ENGINE ELECTRICAL SYSTEM

DIESEL

2,5L

(Figure 32)



ENGINE ELECTRICAL SYSTEM
DIESEL
2,5L

<u>REF</u>	<u>PART NO.</u>	<u>NAME OF PART</u>	<u>QTY</u>	<u>REF</u>	<u>PART NO.</u>	<u>NAME OF PART</u>	<u>QTY</u>
1	2021354	Muffler	1	10	292517	Hex Head Bolt	2
2 ^a	2022560	Flange	1	11	2021359	Nut	2
3	320159	Washer	4	12	15177	Washer	2
4	2021836	Nut	4	13	2021370	Clamp	1
5	2021377	Tail Pipe	1	14	2022496	Joint.....	1
6	63117	Clamp (Exhaust)	1	15	3061350	Anti-Seize	AR
7 ^a	2022561	Exhaust Pipe	1	16 ^a	2022562	Catalytic Converter	1
7	2021366	Exhaust Pipe	1	17 ^a	63117	Clamp	2
8	1351177	Spacer	4				
9	1351176	Washer	2				

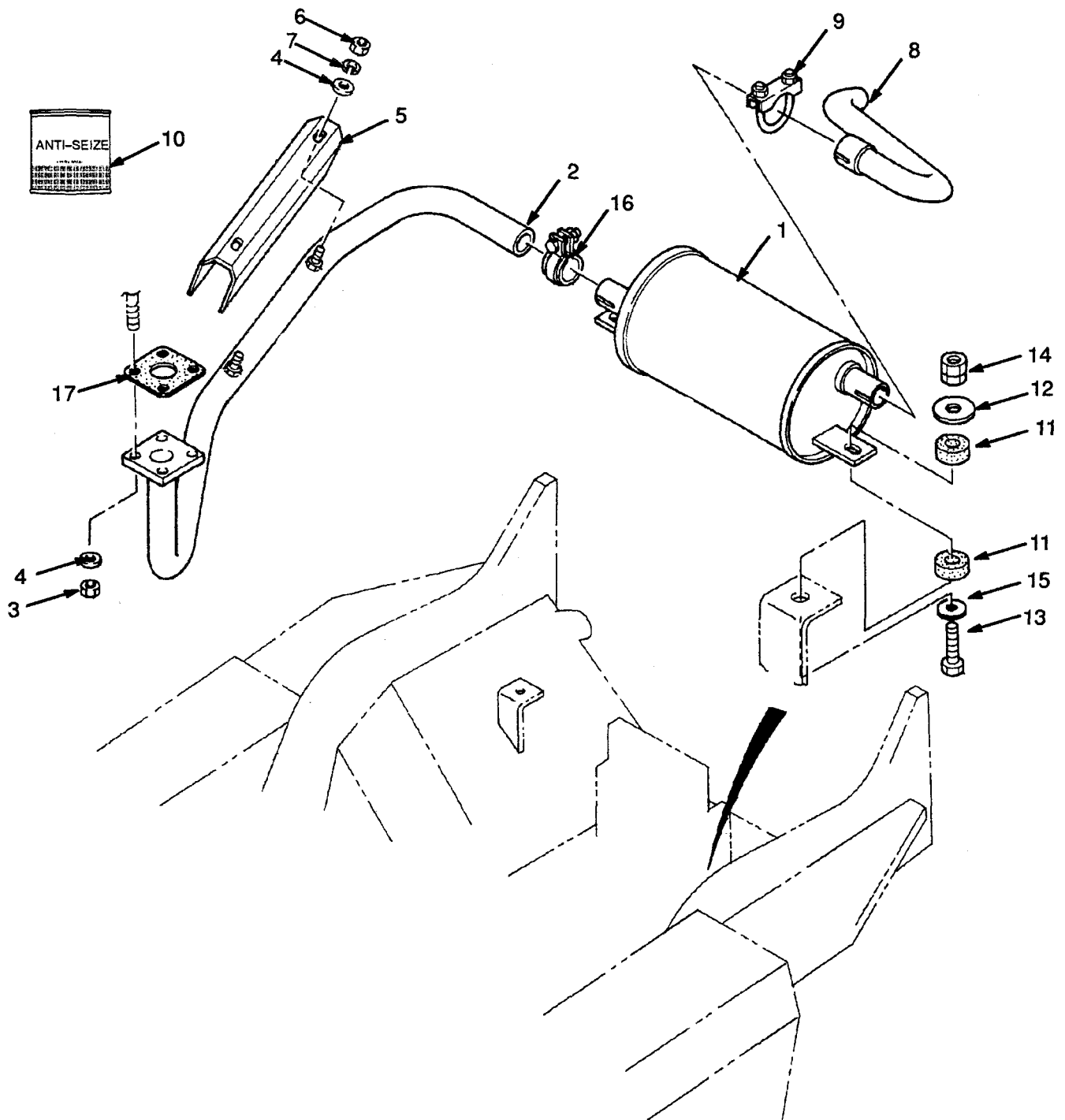
^a with Catalytic Converter

**EXHAUST
 DIESEL
 2,5L**

REF	PART NO.	NAME OF PART	QTY	REF	PART NO.	NAME OF PART	QTY
1	2021354	Muffler	1	10	292517	Hex Head Bolt	2
2 ^a	2022560	Flange	1	11	2021359	Locknut	2
3	320159	Washer	4	12	15177	Washer	2
4	2021836	Nut	4	13	2021370	Exhaust Clamp	1
5	2021377	Tail Pipe	1	14	2022496	Joint	1
6	63117	Exhaust Clamp	1	15	3061350	Anti-Seize	AR
7 ^a	2022561	Exhaust Pipe	1	16 ^a	2022562	Catalytic Converter	1
7	2021366	Exhaust Pipe	1	17 ^a	63117	Clamp	2
8	1351177	Spacer	4				
9	1351176	Washer	2				

^a with Catalytic Converter

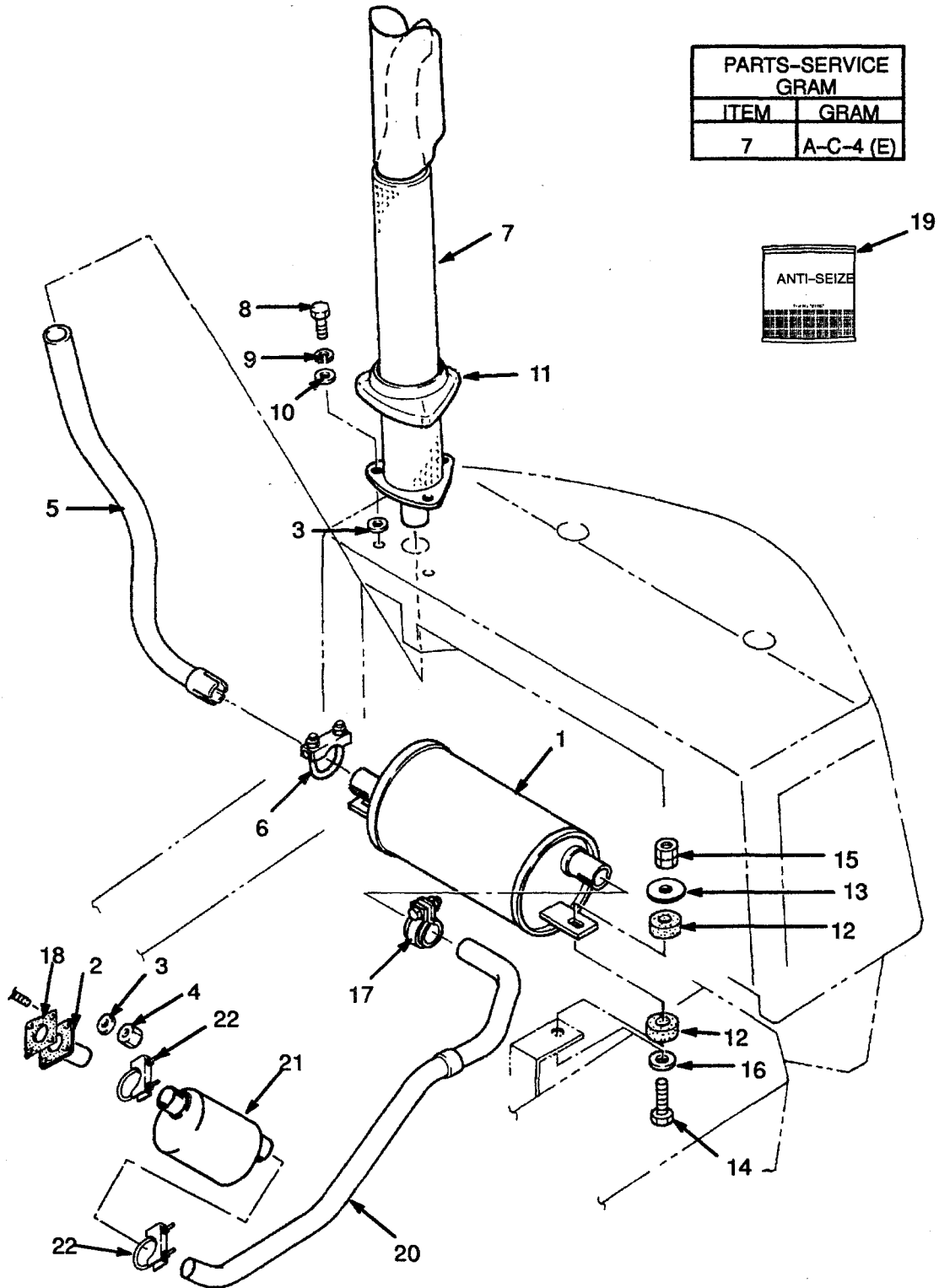
EXHAUST PETROL AND LPG 2,0L (Figure 35)



**EXHAUST
 PETROL AND LPG
 2,0L**

REF	PART NO.	NAME OF PART	QTY	REF	PART NO.	NAME OF PART	QTY
1	2021354	Muffler	1	10	3061350	Anti-Seize	AR
1	^a 2022315	2-Way Catalytic Converter	1	11	1351177	Spacer	4
1	^b 2023445	2-Way Catalytic Converter	1	12	1351176	Washer	2
2	2021363	Exhaust Pipe	1	13	292517	Hex Head Bolt	2
3	2020755	Nut	4	14	2021359	Locknut	2
4	320157	Washer	6	15	15177	Washer	2
5	2021373	Cover	1	16	2021370	Exhaust Clamp	1
6	239503	Nut	2	17	1338308	Joint	1
7	292681	Washer	2				
8	2021374	Tail Pipe	1	^a	Last Used on S/N D001B-3354		
9	63117	Exhaust Clamp	1	^b	First Used on S/N D001B-3355		

UPSWEPT EXHAUST DIESEL 2,5L (Figure 36)

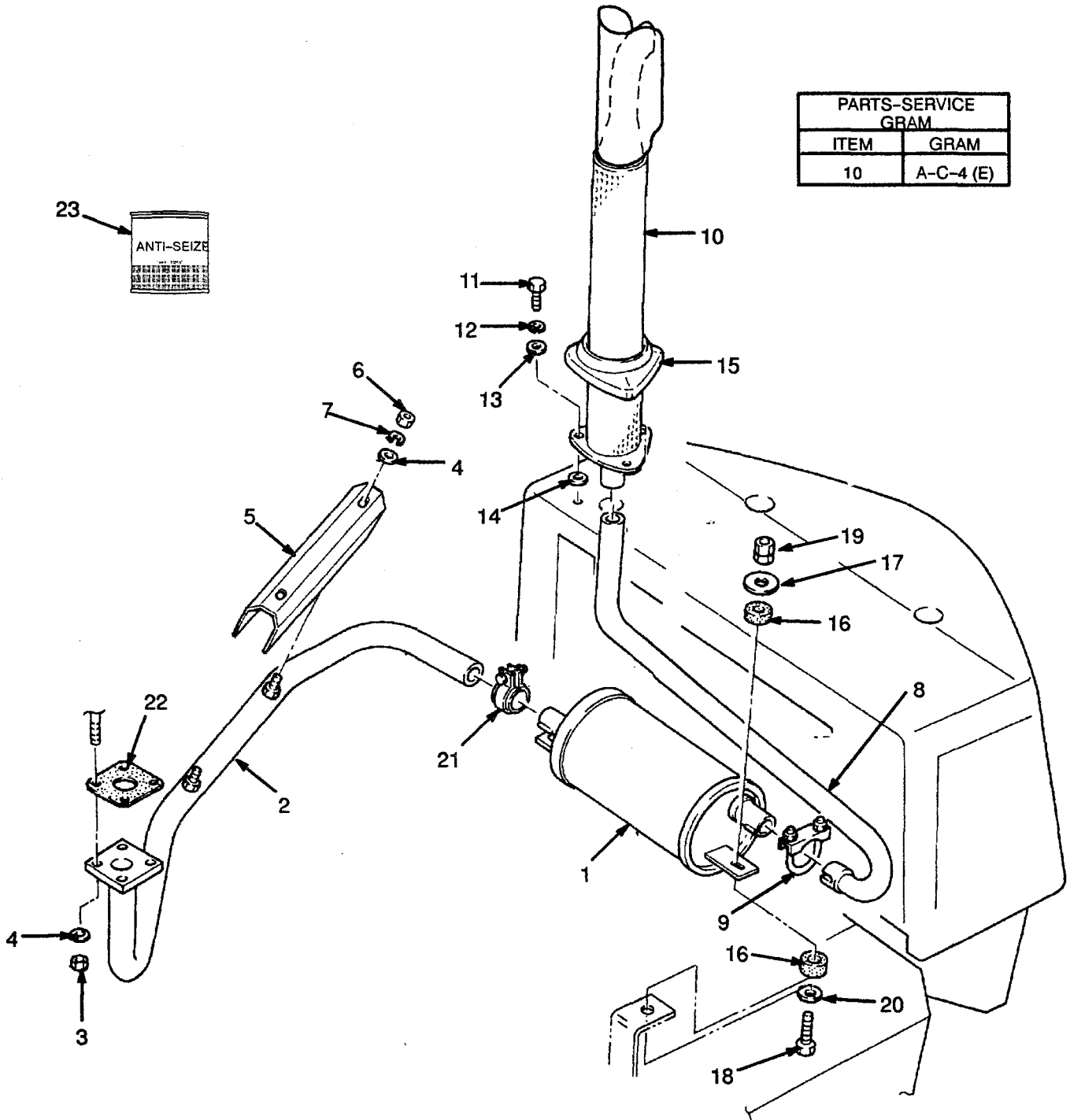


**UPSWEPT EXHAUST
 DIESEL
 2,5L**

REF	PART NO.	NAME OF PART	QTY	REF	PART NO.	NAME OF PART	QTY
1	2021354	Muffler	1	14	292517	Hex Head Bolt	3
2 ^a	202560	Flange	1	15	2021359	Nut	2
3	320159	Washer	1	16	15177	Washer	2
4	2021836	Nut	4	17	2021370	Exhaust Clamp	1
5	2021382	Tail Pipe	1	18	2022496	Joint	1
6	63117	Exhaust Clamp	1	19	3061350	Anti-Seize	AR
7	2021387	Tail Pipe	1	20	2021366	Exhaust Pipe	1
8	136985	Hex Head Bolt	3	20 ^a	2022561	Exhaust Pipe	1
9	292682	Washer	3	21 ^a	2022562	Catalytic Converter	1
10	15176	Washer	1	22 ^a	63117	Clamp	2
11	2021394	Cover	1				
12	1351177	Spacer	4				
13	1351176	Washer	2				

^a with Catalytic Converter

UPSWEPT EXHAUST PETROL AND LPG 2,0L (Figure 37)



**UPSWEPT EXHAUST
PETROL AND LPG
2,0L**

REF	PART NO.	NAME OF PART	QTY	REF	PART NO.	NAME OF PART	QTY
1	^a 2022315	2-Way Catalytic Converter	1	13	15176	Washer	1
1	^b 2023445	2-Way Catalytic Converter	1	14	320159	Washer	1
2	2021363	Exhaust Pipe	1	15	2021394	Cover	1
3	2020755	Nut	4	16	1351177	Spacer	4
4	320157	Washer	6	17	1351176	Washer	2
5	2021373	Cover	1	18	292517	Hex Head Bolt	2
6	239503	Nut	2	19	2021359	Locknut	2
7	292681	Washer	2	20	15177	Washer	2
8	2021379	Tail Pipe	1	21	2021370	Exhaust Clamp	1
9	63117	Exhaust Clamp	1	22	1338308	Joint	1
10	^a 2021387	Tail Pipe	1	23	3061350	Anti-Seize	AR
10	^b 2023533	Tail Pipe	1				
11	136985	Hex Head Bolt	3				
12	292682	Washer	3				

^a Last Used on S/N D001B-3354
^b First Used on S/N D001B-3355