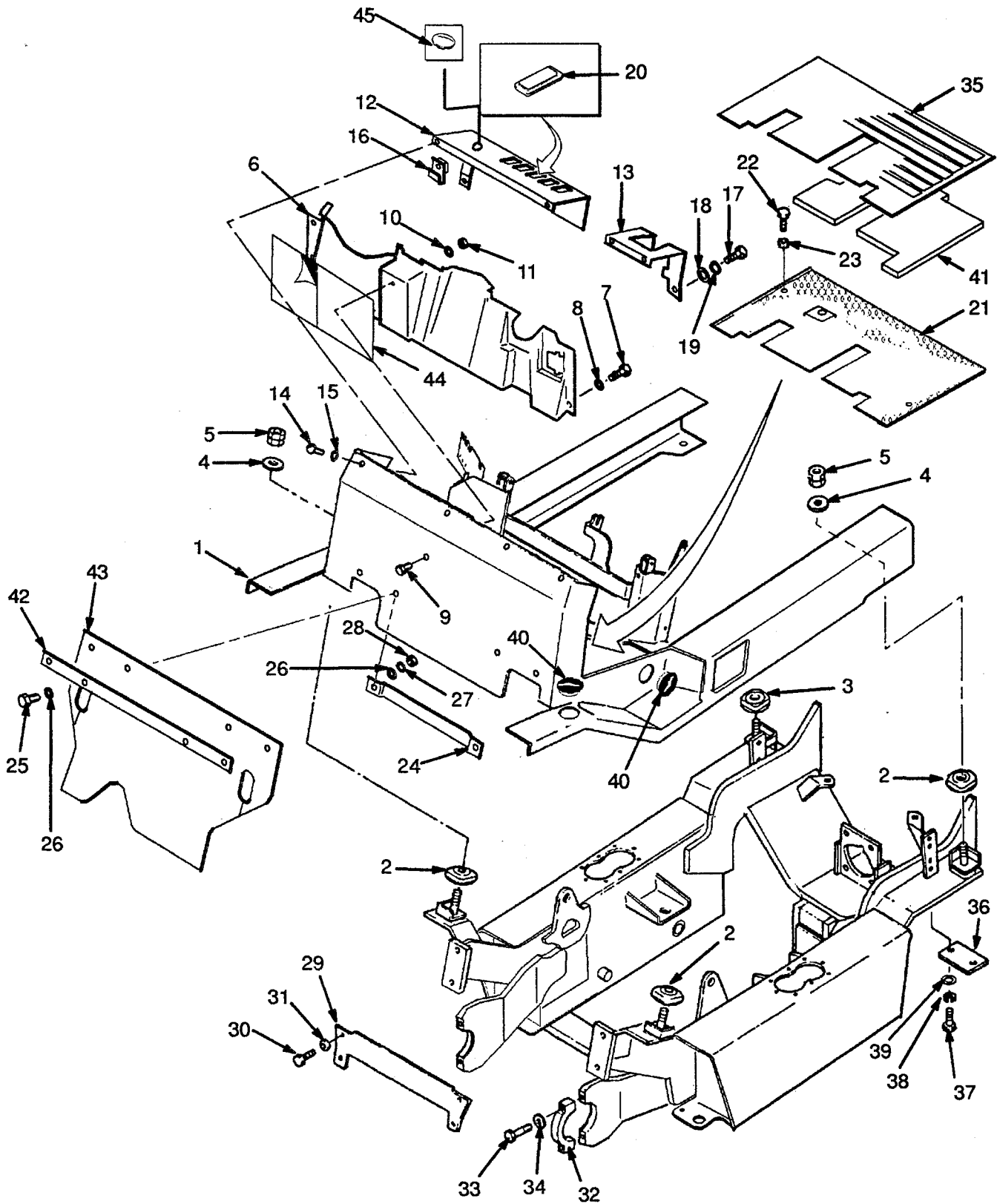


## FRAME AND FLOORPLATE (Figure 3)

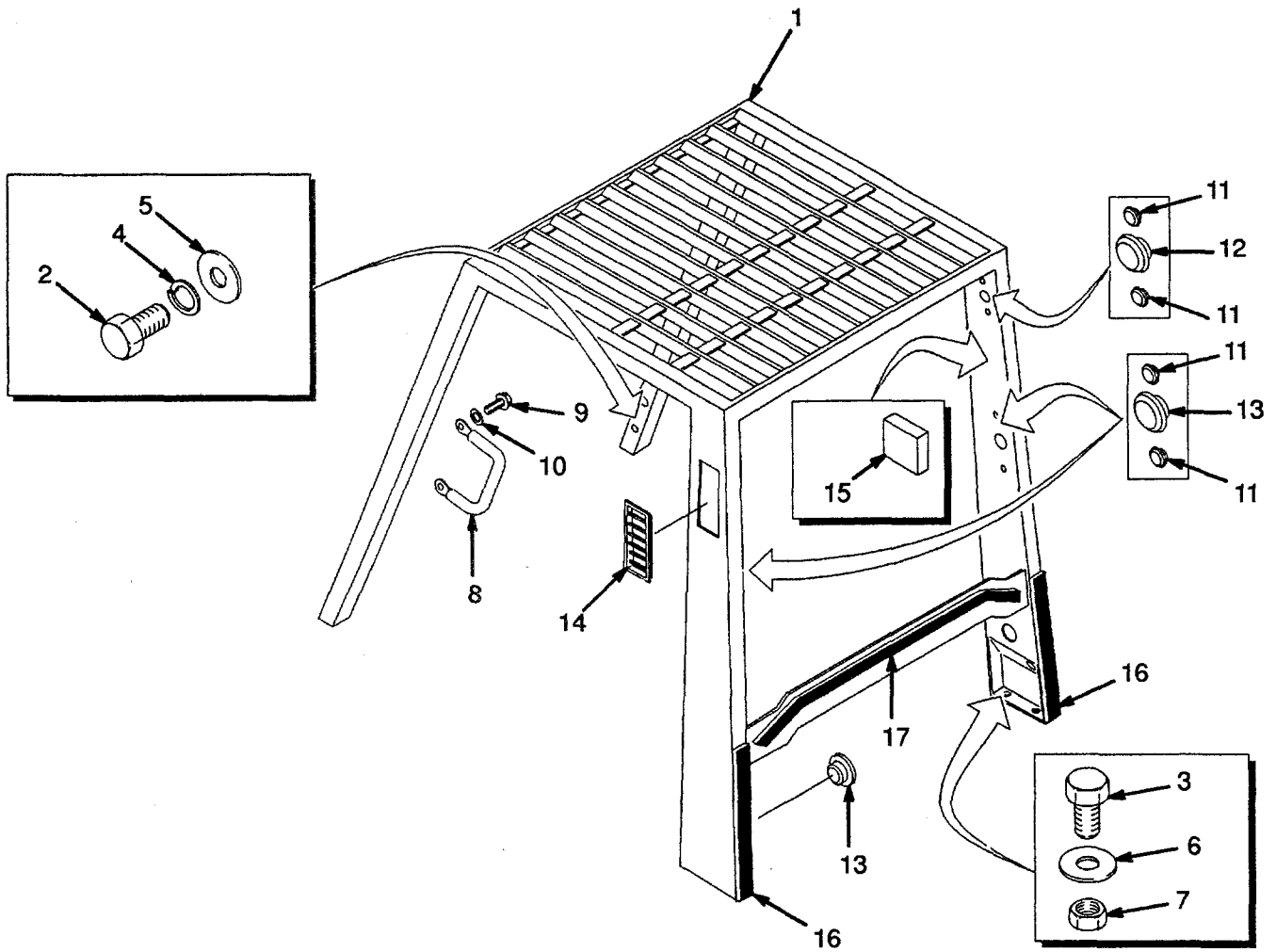


**FRAME AND FLOORPLATE**

REF	PART NO.	NAME OF PART	QTY	REF	PART NO.	NAME OF PART	QTY
1	2021663	Operator Module .....	1	25	<sup>a</sup> 176648	Hex Head Bolt .....	2
2	2021234	Rubber Cushion .....	3	26	320157	Washer .....	4
3	2021235	Rubber Cushion .....	1	27	292681	Lockwasher .....	2
4	2021238	Washer .....	4	28	239503	Nut .....	2
5	2021237	Locknut .....	4	29	2021665	Plate .....	1
6	2021232	Cover .....	1	30	2022636	Hex Head Bolt .....	4
7	316678	Screw .....	4	31	2021490	Washer .....	4
8	320157	Washer .....	4	32	2021833	Cap .....	2
9	292500	Hex Head Bolt .....	1	33	292533	Hex Head Bolt .....	4
10	320156	Washer .....	1	34	2021834	Lockwasher .....	4
11	136687	Nut .....	1	35	2022821	Floor Mat .....	1
12	2021497	Panel .....	1	36	2021900	Plate .....	2
13	2021499	Panel .....	1	37	136985	Hex Head Bolt .....	4
14	296166	Screw .....	4	38	292682	Lockwasher .....	4
15	292681	Lockwasher .....	4	39	320159	Washer .....	4
16	1350282	Nut .....	4	40	<sup>a</sup> 2021395	Plug .....	4
17	316678	Screw .....	2	41	<sup>a</sup> 2022045	Pad .....	1
18	320157	Washer .....	2	41	2022822	Barrier .....	1
19	292681	Lockwasher .....	2	42	<sup>a</sup> 2022030	Plate .....	1
20	376949	Cover .....	AR	43	<sup>a</sup> 2022029	Flap .....	1
21	2021225	Floorplate .....	1	44	2022798	Label .....	1
22	136681	Hex Head Bolt .....	2	45	<sup>b</sup> 2022544	Cap (Choke Cable) .....	1
23	15175	Washer .....	2				
24	2021231	Bracket .....	1				
25	136681	Hex Head Bolt .....	2				

<sup>a</sup> Noise Reduction  
<sup>b</sup> Petrol and Diesel

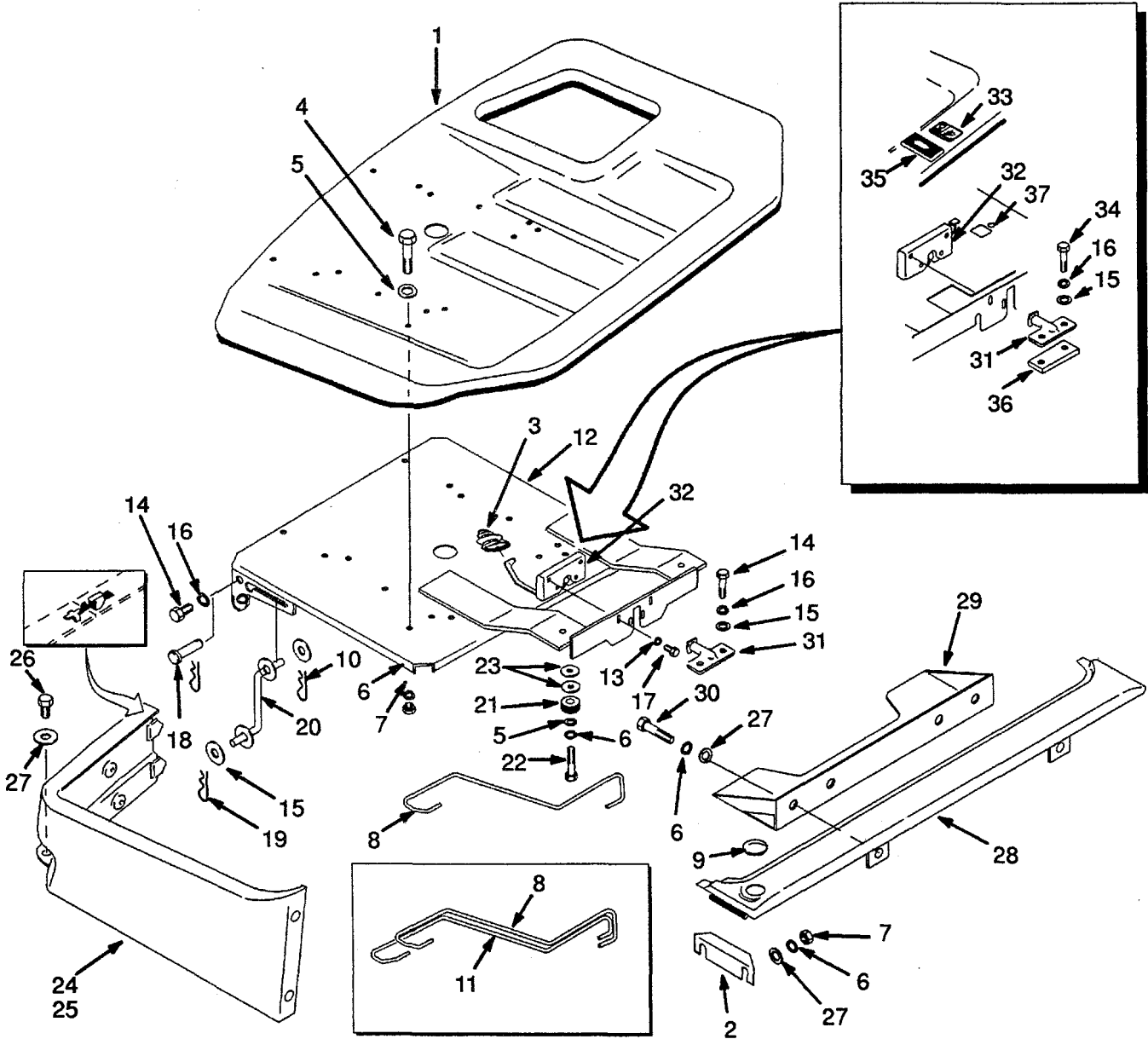
## OVERHEAD GUARD (Figure 4)



**OVERHEAD GUARD**

REF	PART NO.	NAME OF PART	QTY	REF	PART NO.	NAME OF PART	QTY
1	<sup>a</sup> 2021660	Overhead Guard .....	1	11	1363916	Hole Plug .....	12
1	<sup>b</sup> 2021662	Overhead Guard .....	1	12	1363917	Hole Plug .....	4
2	132860	Bolt .....	4	13	1363918	Hole Plug .....	3
3	292528	Bolt .....	4	14	1339265	Grille .....	2
4	292683	Lockwasher .....	4	15	<sup>c</sup> 2022904	Pad (Diesel) .....	2
5	15177	Washer .....	4	16	2022035	Pad .....	2
6	320161	Washer .....	4	17	2022043	Pad .....	1
7	300937	Locknut .....	4				
8	1343647	Handle .....	1	<sup>a</sup>	Standard Height		
9	2021233	Screw .....	2	<sup>b</sup>	Raised Height		
10	320157	Washer .....	2	<sup>c</sup>	Noise Reduction		

## ENGINE COVER (Figure 5)



**ENGINE COVER**

**KEY**

A: Non-Suspension Seat  
B: Suspension Seat

REF	PART NO.	NAME OF PART	QTY		REF	PART NO.	NAME OF PART	QTY	
			A	B				A	B
1	<sup>a</sup> 2021197	Engine Cover .....	1	1	21	2021213	Rubber Cushion .....	2	2
1	<sup>b</sup> 1385128	Engine Cover .....	1	1	22	296167	Screw .....	2	2
2	2021223	Bracket .....	2	2	23	15177	Washer .....	ARA	AF
3	1339786	Boot .....	1	1	24	2021215	Panel (RH) .....	1	1
4	176640	Hex Head Bolt .....	2	2	25	2021216	Panel (LH) .....	1	1
5	320157	Washer .....	6	6	25	1373801	Latch (Kit) .....	1	1
6	292681	Lockwasher .....	12	12	26	136749	Hex Head Bolt .....	2	2
7	239503	Nut .....	6	6	27	15175	Washer .....	10	10
8	2022615	Torsion Spring .....	1	1	28	2021218	Cover .....	1	1
9	1363918	Plug .....	1	1	29	2021219	Support .....	1	1
10	15222	Pin .....	1	1	30	136749	Hex Head Bolt .....	4	4
11	2022613	Torsion Spring .....	1	1	31	1337148	Striker Plate .....	1	1
12	2023532	Seat Pan .....	1	1	32	<sup>a</sup> 2021222	Latch .....	1	1
13	320156	Washer .....	4	4	32	<sup>b</sup> 1386216	Latch .....	1	1
14	287854	Hex Head Bolt .....	2	2	33	<sup>b</sup> 1386223	Nut .....	1	1
15	320159	Washer .....	4	4	34	<sup>b</sup> 287860	Hex Head Bolt .....	2	2
16	292682	Lockwasher .....	2	2	35	<sup>b</sup> 1386224	Cover .....	1	1
17	199563	Hex Head Bolt .....	4	4	36	<sup>b</sup> 1385129	Spacer .....	1	1
18	2021207	Pin .....	2	2					
19	1362714	Pin .....	4	4					
20	2021208	Support .....	1	1					

<sup>a</sup> Last Used on S/N Pending per ECN 86731  
<sup>b</sup> First Used on S/N Pending per ECN 86731



**SUSPENSION SEAT**

REF	PART NO.	NAME OF PART	QTY	REF	PART NO.	NAME OF PART	QTY
a	1376681	Seat Assy .....	1	14	1362062	Tape .....	1
b	1376677	Seat Assy .....	1	15	1362063	Hip Restraint (LH) .....	1
1 a	1374179	Seat Cushion .....	1	16	1362064	Hip Restraint (RH) .....	1
1 b	1362047	Seat Cushion .....	1	17	1362065	Hardware .....	1
2 a	1374180	Seat Cushion .....	1	18	2022900	Spacer .....	2
2 b	1362048	Seat Cushion .....	1	19	18727	Hex Head Bolt .....	4
3	1362049	Shock Absorber .....	1	20	18496	Hex Head Bolt .....	4
4	1354140	Switch Assy .....	1	21	15175	Washer .....	4
5	1362052	Block .....	1	22	145639	Nut .....	4
6	1362053	Shaft .....	1	23 c	1374750	Seat Belt .....	1
7	1360869	Cover (RH) .....	1	24 c	379199	Hex Head Bolt .....	2
8	1360871	Cover (LH) .....	1	25 c	379697	Washer .....	4
9	1374188	Cover .....	1	26 c	379698	Nut .....	2
10	1362058	Holder .....	1	27	1378305	Kit-Slide Rail .....	1
11	1374190	Cover .....	1				
12	1360872	Rear Cover .....	1	a	Fabric Cover		
13	1362061	Knob .....	1	b	Vinyl Cover		
				c	with Seat Belt		



**NON-SUSPENSION SEAT**

REF	PART NO.	NAME OF PART	QTY	REF	PART NO.	NAME OF PART	QTY
	1375150	Seat Assy .....	1	13	221733	Washer .....	2
1	18496	Hex Head Bolt .....	4	14	1300107	Rod .....	1
2	15175	Washer .....	4	15 <sup>a</sup>	364807	Hip Restraint (RH) .....	1
3	145639	Nut .....	4	16 <sup>a</sup>	364808	Hip Restraint (LH) .....	1
4 <sup>a</sup>	1374750	Seat Belt .....	1	17 <sup>a</sup>	18727	Hex Head Bolt .....	4
5	379199	Hex Head Bolt .....	2	18 <sup>a</sup>	18515	Washer .....	4
6	379697	Washer .....	4	19 <sup>a</sup>	379197	Hex Head Bolt .....	2
7	379698	Nut .....	2	20 <sup>a</sup>	379198	Washer .....	2
8	1351431	Seat .....	1	21 <sup>a</sup>	364854	Plug .....	2
8	1354140	Switch .....	1	22	335988	Base .....	1
9	335553	Seat Rail (LH) .....	1	23	335991	Cover .....	1
10	383116	Seat Rail (RH) .....	1	24	222029	Rivet .....	4
11	364914	Hex Head Bolt .....	4				
12	204114	Spacer .....	4				

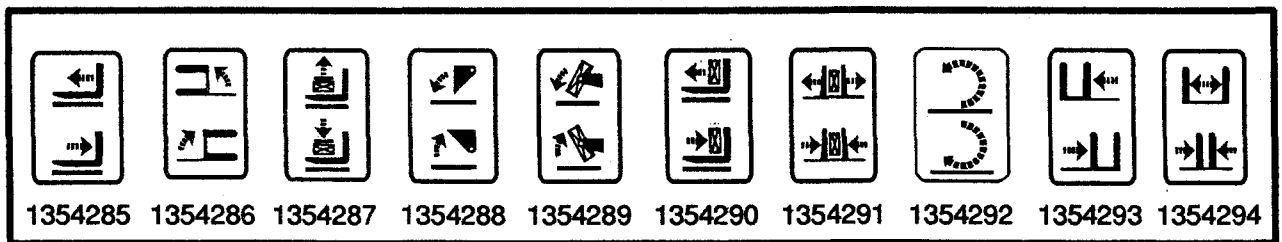
<sup>a</sup> with Operator Restraint



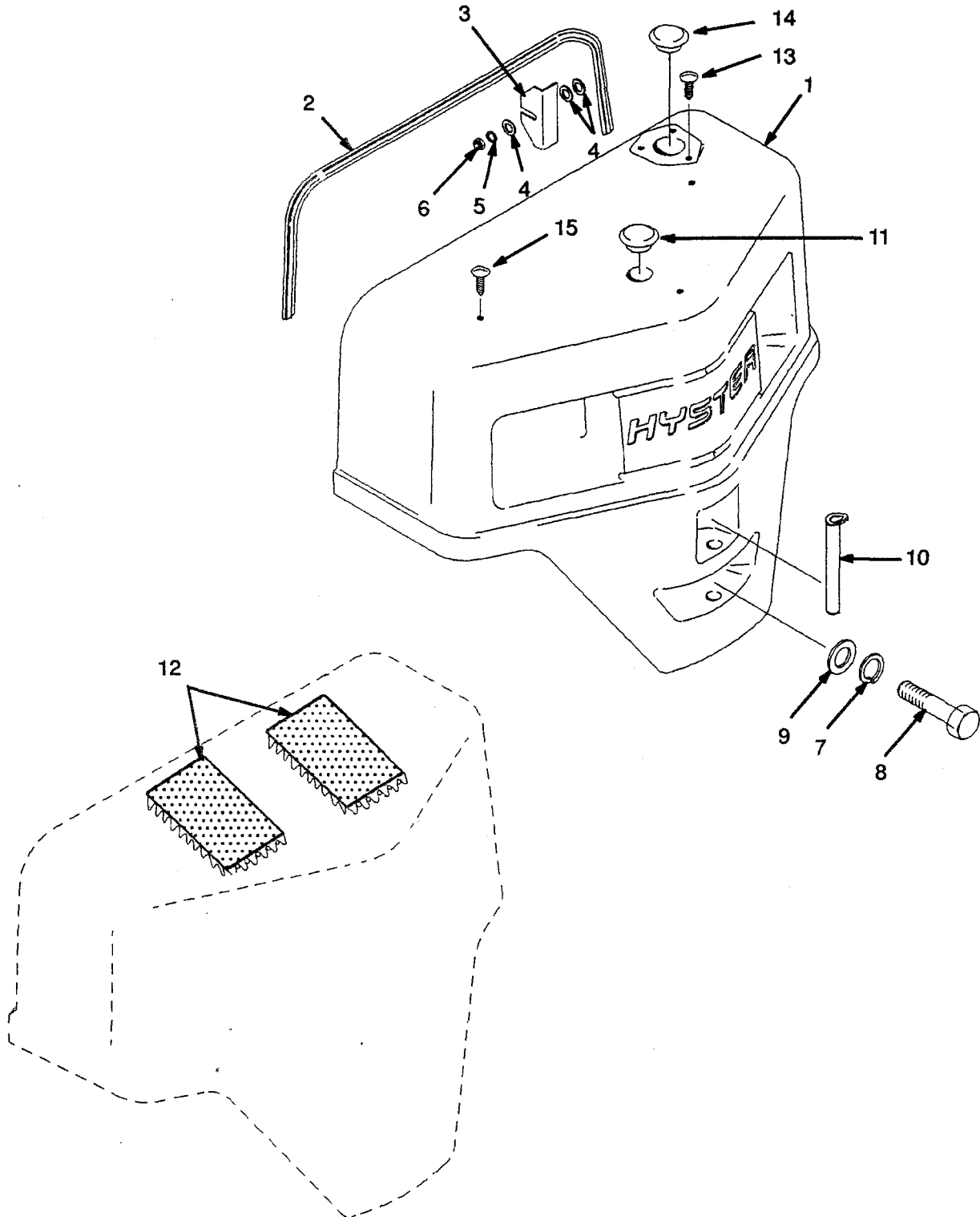
**LABELS AND PAINT**

REF	PART NO.	NAME OF PART	QTY	REF	PART NO.	NAME OF PART	QTY
1	1339830	Label-Mast Warning	2	13	<sup>b</sup> 1359588	Label-Operator Warning	2
2	1339672	Label-Hyster	2	13	<sup>c</sup> 1335143	Label-Tip-Over	2
3	<sup>a</sup>	Label-Auxiliary Function	AR	14	<sup>b</sup> 1366725	Label-Operator Warning	1
4	1354172	Label-Flammability	1	14	<sup>c</sup> 1336592	Label-Operator Warning	1
5	2020517	Label-Hyster	2	15	1356138	Label-Park Brake	1
6	1356137	Label-Lift/Tilt	1	16	1300094	Label-Fan	2
7	1343276	Label-Mast Warning	1	17	1345926	Label-Fan	1
8	2020510	Label (1.50)	2	18	170658	Rivet	4
8	2020511	Label (1.75)	2	19	389688	Cover	1
8	2020512	Label (2.00)	2	20	<sup>d</sup>	Nameplate	1
9	1339832	Label-Pinch Point	2	21	<sup>e</sup> 1385099	Label (Hydraulic Oil)	1
10	1345808	Paint-Nugget Yellow 3,8L	AR	22	<sup>e</sup> 1385100	Label (Locking Hood Latch)	1
10	1345809	Paint-Nugget Yellow Spray	AR	23	320037	Label (Patents and Trademarks)	1
10	316844	Red Spray Paint	AR				
10	1344902	Paint-Low Gloss Black 3,8L	AR				
10	1344901	Paint-Low Gloss Black spray	AR				
10	1346270	Paint-Powder Black Spray	AR				
11	1356109	Label-Caution	1				
12	1339828	Label-No Riders	2				

- <sup>a</sup> Table
- <sup>b</sup> with Operator Restraint
- <sup>c</sup> without Operator Restraint
- <sup>d</sup> Contact your Hyster Dealer
- <sup>e</sup> First Used on S/N Pending per ECN 70035-02



## COUNTERWEIGHT (Figure 9)

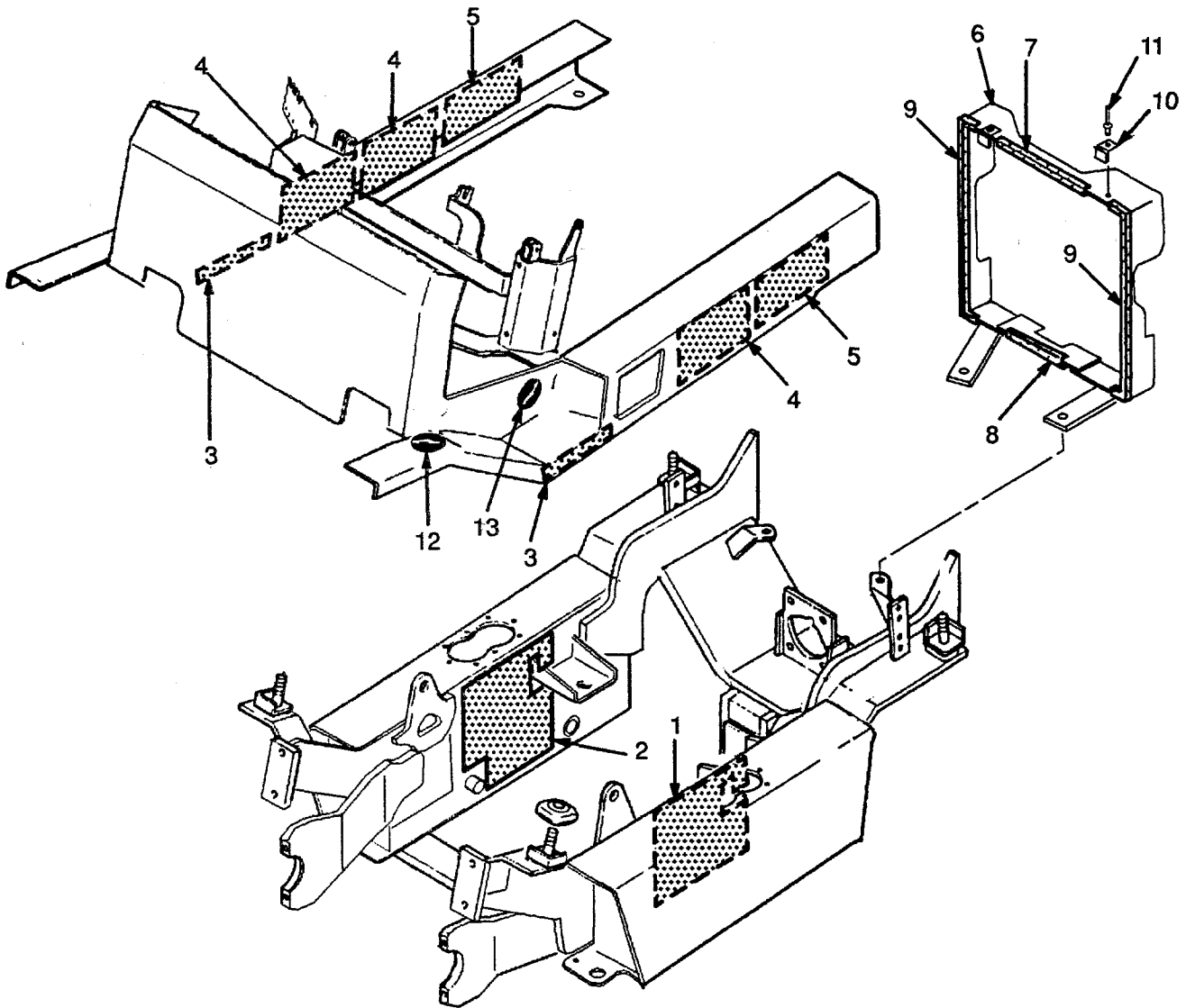


**COUNTERWEIGHT**

REF	PART NO.	NAME OF PART	QTY	REF	PART NO.	NAME OF PART	QTY
1	a	2023469 Counterweight .....	1	10	2022849 Pin (Optional) .....	1	1
1	b	2023470 Counterweight .....	1	11	1350231 Hole Plug .....	1	1
1	c	2023472 Counterweight .....	1	12	2022042 Noise Reduction Pad .....	2	2
2		2022356 Seal .....	1	13	d 1347045 Plug .....	3	3
3		2021563 Shim .....	AR	14	d 2021395 Cap .....	1	1
4		320157 Washer .....	12	15	e 1347045 Plug .....	3	3
5		292681 Lockwasher .....	4				
6		239503 Nut .....	4	a	H1.50XM		
7		292689 Lockwasher .....	2	b	H1.75XM		
8		292609 Hex Head Bolt .....	2	c	H2.00XMS		
9		2021562 Washer .....	2	d	without Upswept Exhaust		
10		2021564 Pin .....	1	e	Petrol and Diesel		

## NOISE REDUCTION FRAME

(Figure 10)



**NOISE REDUCTION  
FRAME**

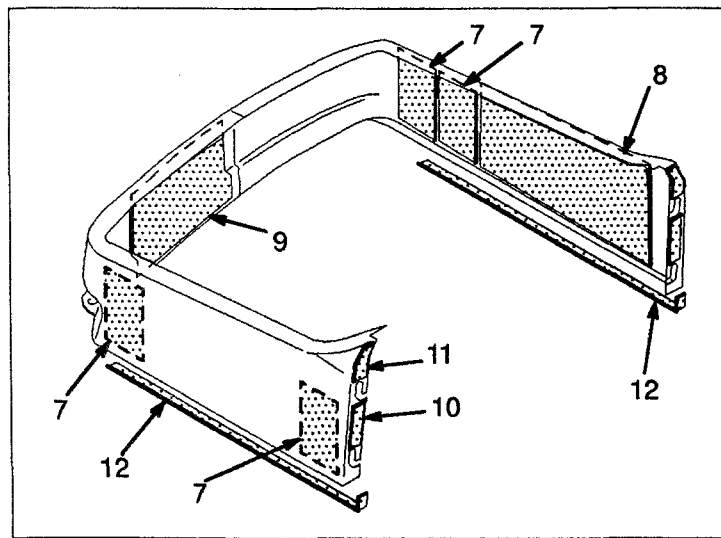
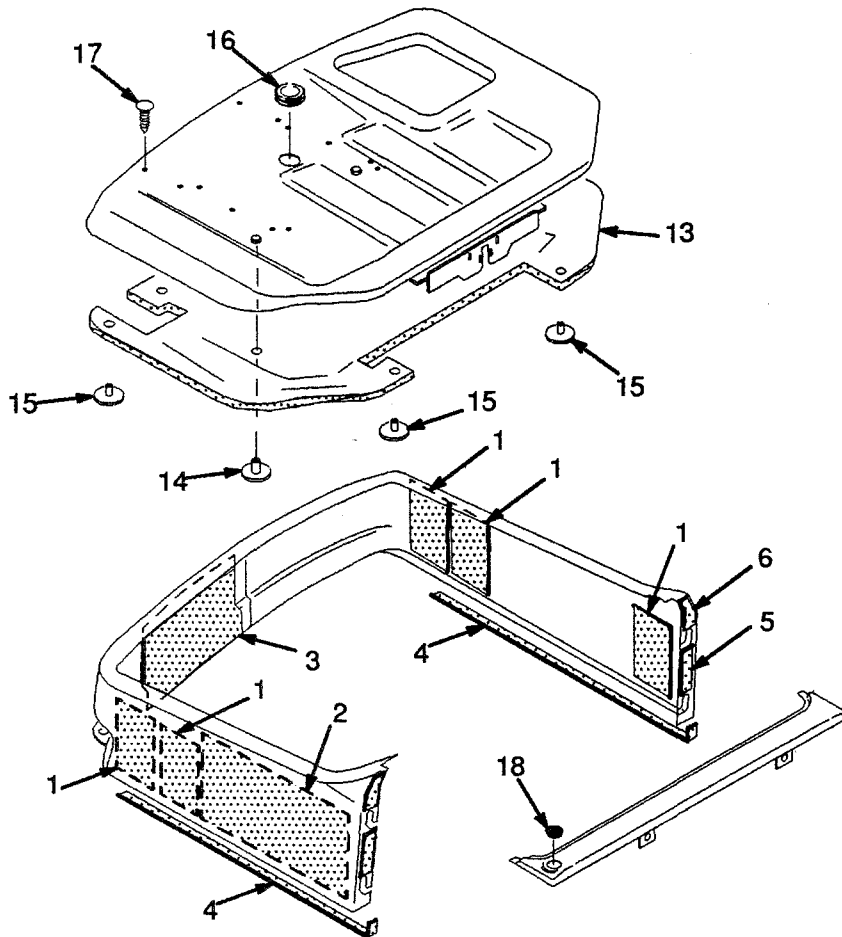
**KEY**

A: Petrol and LPG  
B: Diesel

REF	PART NO.	NAME OF PART	QTY		REF	PART NO.	NAME OF PART	QTY	
			A	B				A	B
1	2022038	Pad .....	1	1	7	2023406	Pad .....	1	1
2	2022039	Pad .....	1	1	8	2022027	Pad .....	1	1
3	2022035	Pad .....	2	2	9	2022034	Pad .....	2	2
4	2022036	Pad .....	3	3	10	2021752	Clip .....	2	2
5	2022037	Pad .....	2	2	11	222021	Rivet .....	2	2
6	2022019	Duct .....	1	..	12	2021395	Cap .....	2	2
6	2022023	Duct .....	..	1	13	2022803	Cap .....	2	2

## NOISE REDUCTION ENGINE COVER

(Figure 11)



**NOISE REDUCTION  
 ENGINE COVER**

**KEY**

A: Petrol and LPG  
 B: Diesel

REF	PART NO.	NAME OF PART	QTY		REF	PART NO.	NAME OF PART	QTY	
			A	B				A	B
1	2022040	Pad .....	5	..	10	2022033	Pad .....	..	2
2	2022041	Pad .....	1	..	11	2022034	Pad .....	..	2
3	2022046	Pad .....	1	..	12	2022032	Pad .....	..	2
4	2022032	Pad .....	2	..	13	2022044	Pad .....	1	1
5	2022033	Pad .....	2	..	14	1361087	Button .....	4	4
6	2022034	Pad .....	2	..	15	280644	Button .....	4	4
7	2022040	Pad .....	..	4	16	1359587	Grommet .....	1	1
8	2022041	Pad .....	..	1	17	1347045	Fastener .....	4	4
9	2022046	Pad .....	..	1	18	1335932	Hole Plug .....	1	1