
STEERING

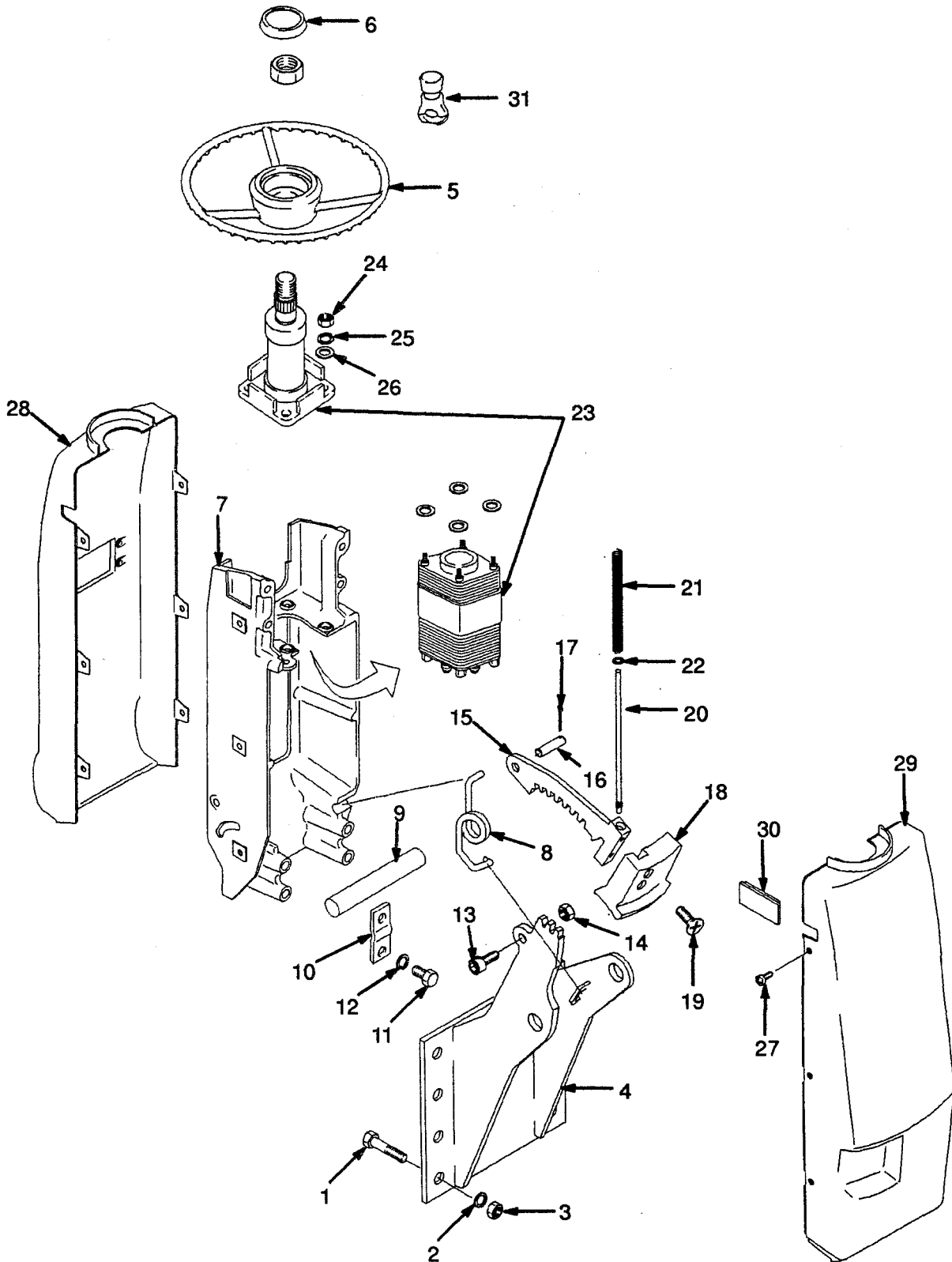
Steering Column Page 202

Steering Control Valve Page 206

Steering Cylinder Page 208

Trail Axle Page 204

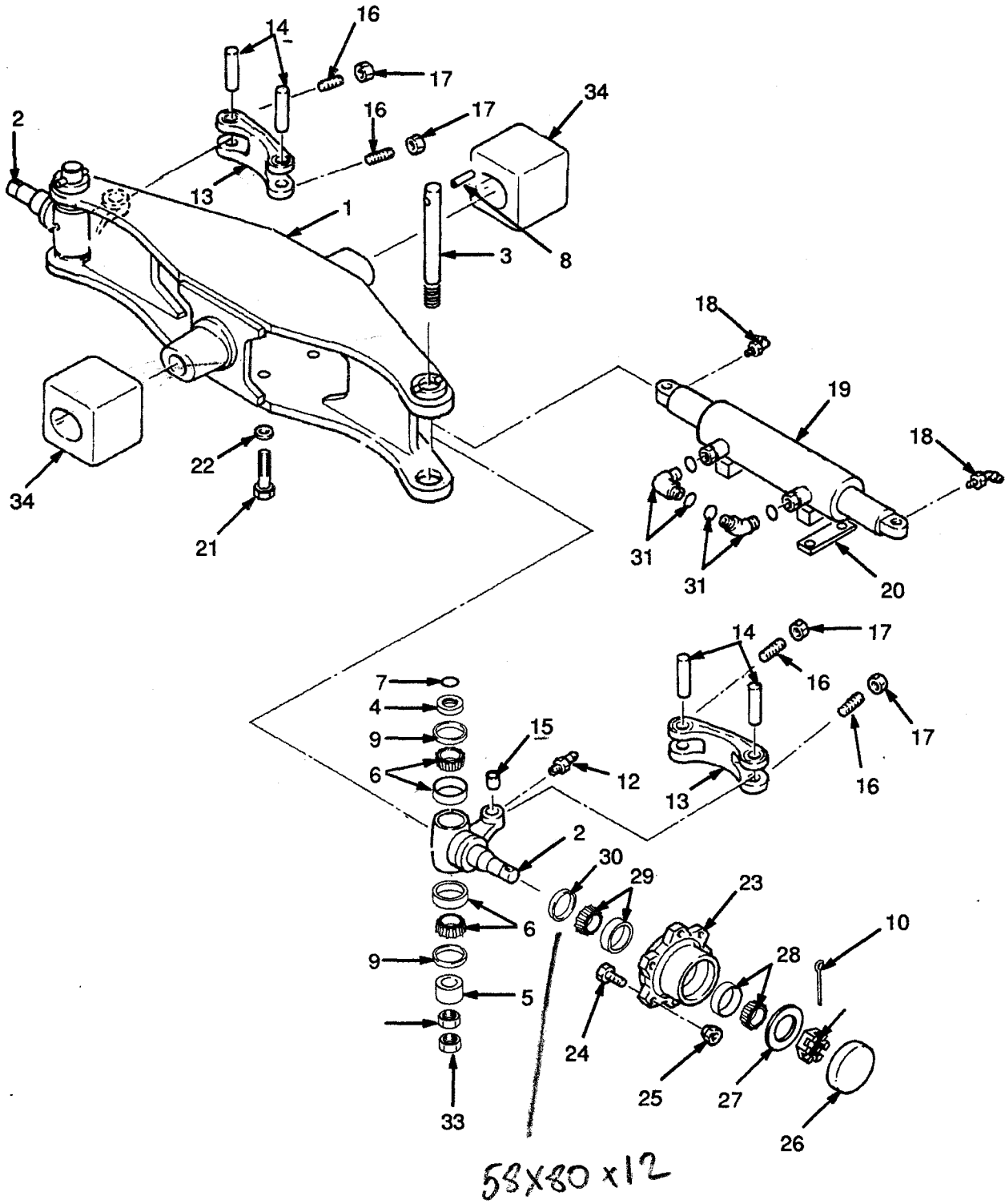
STEERING COLUMN (Figure 96)



STEERING COLUMN

REF	PART NO.	NAME OF PART	QTY	REF	PART NO.	NAME OF PART	QTY
1	136985	Hex Head Bolt	4	20	1343572	Rod	1
2	292682	Washer	4	21	1343537	Spring	1
3	136692	Nut	4	22	320155	Washer	1
4	1337043	Bracket	1	23	Steering Control Valve	1
5	1329250	Steering Wheel	1			☐ Figure 98	
6	1347135	Horn Button	1	24	221706	Nut	4
7	1343573	Bracket	1	25	15155	Lockwasher	4
8	1378600	Spring	1	26	18515	Washer	8
9	1335987	Shaft	1	27	1337196	Screw	6
10	1335967	Plate	2	28 a	1343605	Cover (Upper)	1
11	136749	Hex Head Bolt	4	28 b	1335879	Cover (Upper)	1
12	292681	Washer	4	29 a	1343606	Cover (Lower)	1
13	296009	Hex Head Bolt	1	29 b	1335880	Cover (Lower)	1
14	239503	Nut	1	30 c	1343597	Plug	1
15	1343548	Latch	1	31	895468	Spinner Knob	1
16	1343607	Pin	1				
17	15212	Pin	1	a	Forward/Reverse Lever (with Turn Signal)		
18	1343574	Handle	1	b	Forward/Reverse Lever (without Turn Signal)		
19	296472	Screw	2	c	Monotrol Pedal		

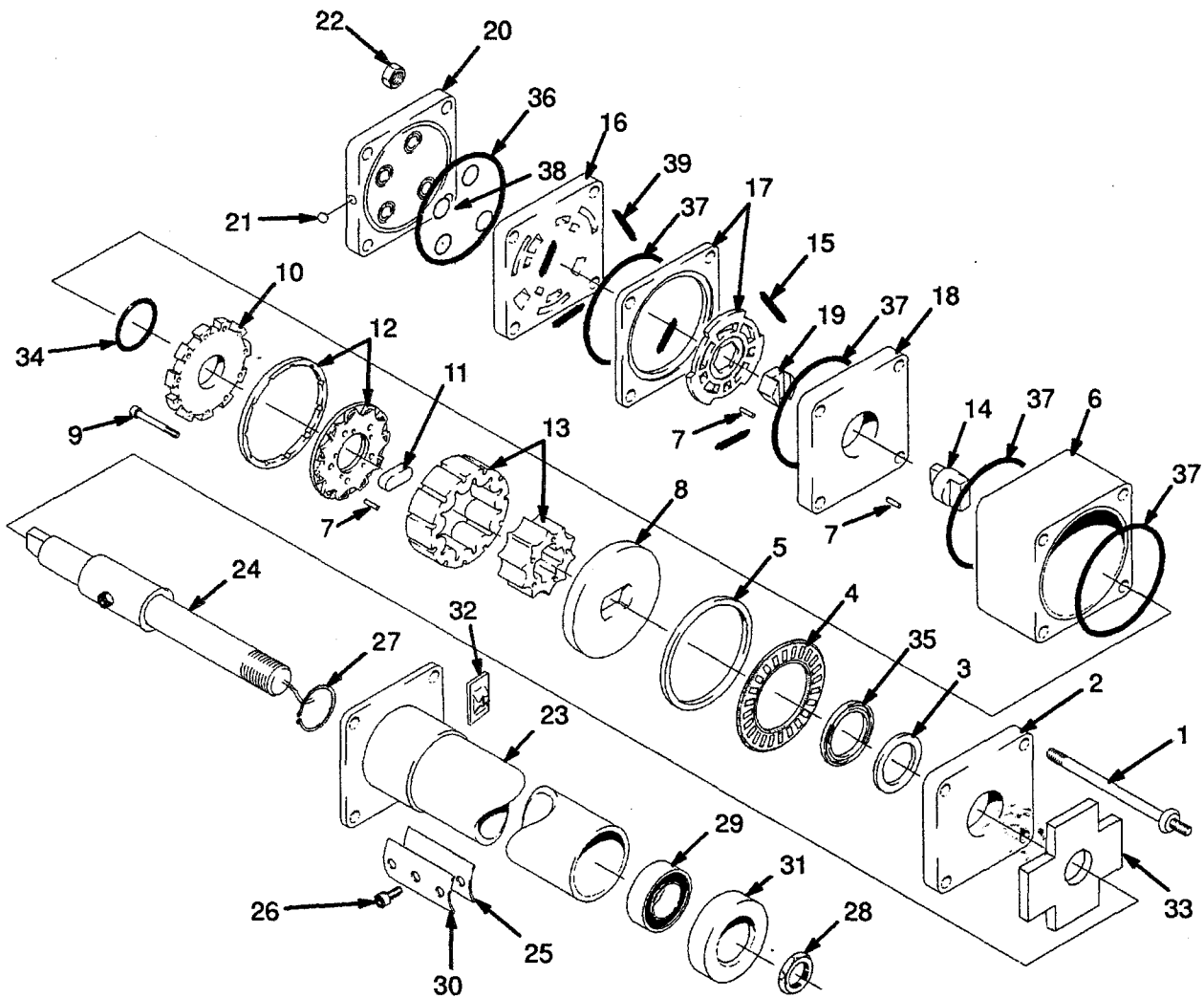
TRAIL AXLE (Figure 97)



TRAIL AXLE

REF	PART NO.	NAME OF PART	QTY	REF	PART NO.	NAME OF PART	QTY
1	2021767	Trail Axle	1	18	2021895	Lube Fitting	2
2	2021778	Knuckle	2	19	Steering Cylinder	1
3	2021781	King Pin	2			☐ Figure 99	
4	2021783	Sleeve (Upper)	2	20	2021796	Spacer	2
5	2021784	Sleeve (Lower)	2	21	2021897	Fitting	4
6	2021785	Bearing	4	22	296426	Washer	4
7	2021882	O-Ring	2	23	2021797	Hub	2
8	2021786	Pin	2	24	2021798	Bolt	12
9	Oil Seal	4	25	2021799	Nut	12
10	2021885	Split Pin	2	26	2021800	Cap	2
11	2021889	Nut	2	27	2021801	Washer	2
12	2305757	Lube Fitting	2	28	2021802	Bearing	2
13	2021791	Intermediate Link	2	29	2021803	Bearing	2
14	2021793	Pin	4	30	2021898	Oil Seal	2
15	2021794	Bush	2	31	16567	Fitting	1
16	302146	Screw	4	32	16558	Fitting	1
17	2021892	Locknut	4	33	2021790	Locknut	2
				34	2021804	Rubber Cushion	2

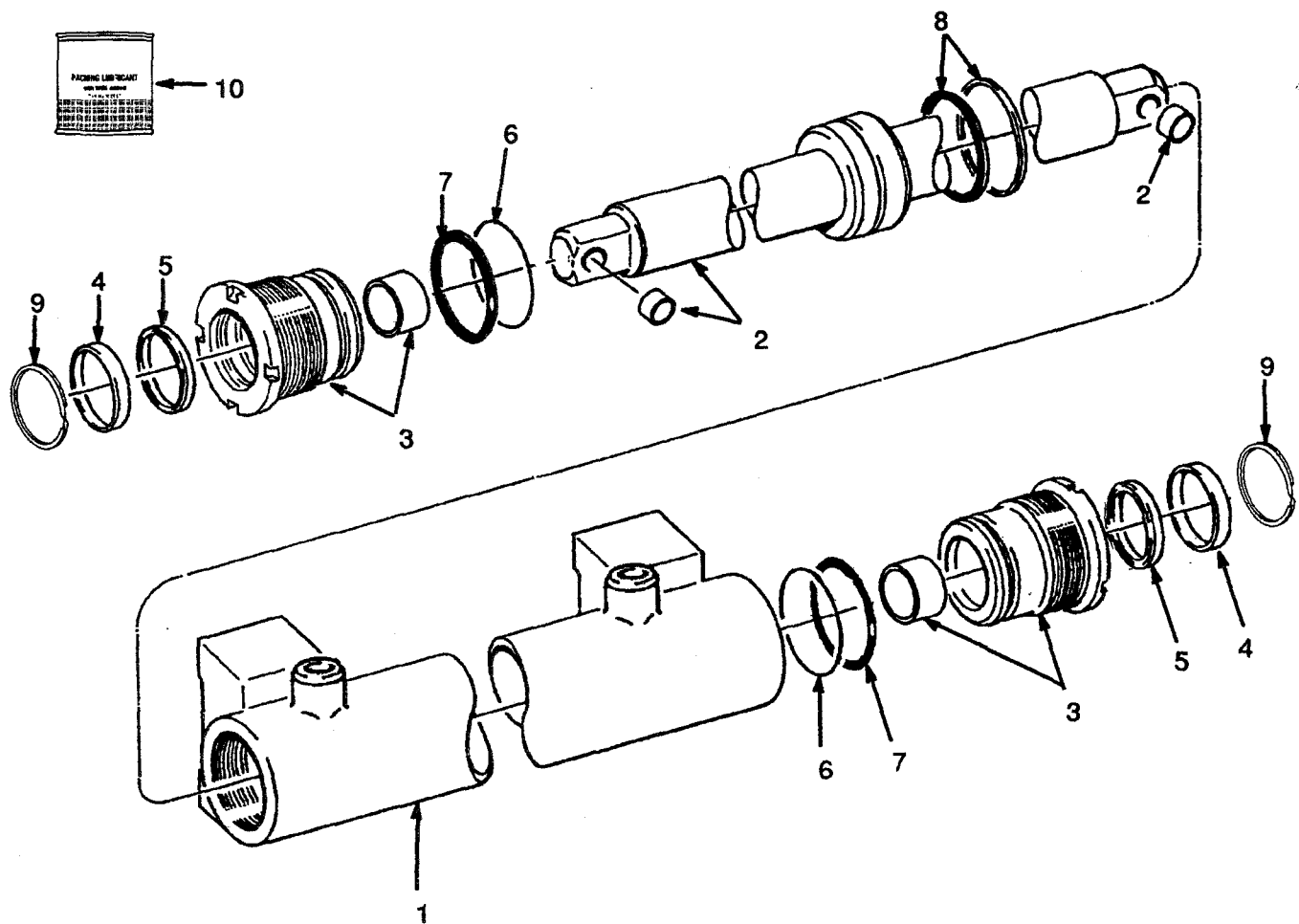
STEERING CONTROL VALVE (Figure 98)



STEERING CONTROL VALVE

REF	PART NO.	NAME OF PART	QTY	REF	PART NO.	NAME OF PART	QTY
	1367881	Guide Assy	1	23	1367891	Column Assy	1
1	1367882	Bolt	4	23	Tube	1
2	1367883	Plate (Upper)	1	24	Shaft	1
3	358766	Seal (Spacer)	1	25	1371650	Joint	1
4	1302027	Thrust Bearing	1	26	1367895	Screw	1
5	358818	Spacer	1	27	1367896	Circlip	1
6	306756	Metering Ring	1	28	14189	Nut	1
7 a	Needle Roller	9	29	1367897	Bearing	1
8 b	358771	Drive Plate	1	30	1367898	Brush Assy	1
9 b	306758	Screw	11	31	1324293	Dust Seal	1
10 b	358772	Cover (Commutator)	1	32	1368001	Nut	4
11 b	306759	Spacer	1	33	Joint (Upper Cover)	1
12 b	358773	Commutator Ring	1	34 e	Seal	1
13 b	306760	Rotator Assy	1	35 e	Seal	1
14	358803	Link (Drive)	1	36 e	1328762	O-Ring	1
15 c	Spring	3	37 e	Seal Ring	4
16 d	1367885	Port Manifold	1	38 e	O-Ring	3
17 d	1367886	Valve And Ring Assy	1	39 c	Spring	3
18 d	1367887	Isolation Plate	1				
19 d	358805	Drive Unit Assy	1	a	Included In Needle Roller Kit 358806		
20	1367888	Valve Assy	1	b	Included In Metering Assy 306757		
21	320857	Ball	1	c	included in Spring Kit 358810		
22	15005	Nut	4	d	Included In Drive And Valve Assy 1375553		
				e	Included In Seal Kit 1354725		

STEERING CYLINDER (Figure 99)



STEERING CYLINDER

REF	PART NO.	NAME OF PART	QTY	REF	PART NO.	NAME OF PART	QTY
	2021795	Steering Cylinder	1	6 ^a	O-Ring	2
1	1367169	Shell	1	7 ^a	O-Ring	2
2	1367170	Rod	1	8 ^a	Seal	1
2 ^a	2022923	Bush	2	9 ^a	Circlip	2
3	1367171	Guide	2	10	186061	Packing Lube	AR
3 ^a	Bush	2				
4 ^a	Dust Seal	2				
5 ^a	Packing	2				

^a Included In Seal Kit 1367172