

TRANSMISSION

Charge Pump
First Used on S/N D001B-3932 Page 170

Charge Pump
Last Used on S/N D001B-3931 Page 168

Control Valve
First Used on S/N D001B-3932 Page 192

Control Valve
Last Used on S/N D001B-2931 Page 190

Differential Page 194

Drive Axle Page 196

End Plate Page 198

Hydraulic Clutch
First Used on S/N D001B-3932 Page 188

Hydraulic Clutch
Last Used on S/N D001B-3931 Page 186

Solenoid Valve Page 172

Torque Converter
First Used on S/N D001B-3932 Page 166

Torque Converter
Last Used on S/N D001B-3931 Page 164

Transmission Gears
First Used on S/N D001B-3932 Page 180

Transmission Gears
Last Used on S/N D001B-3931 Page 178

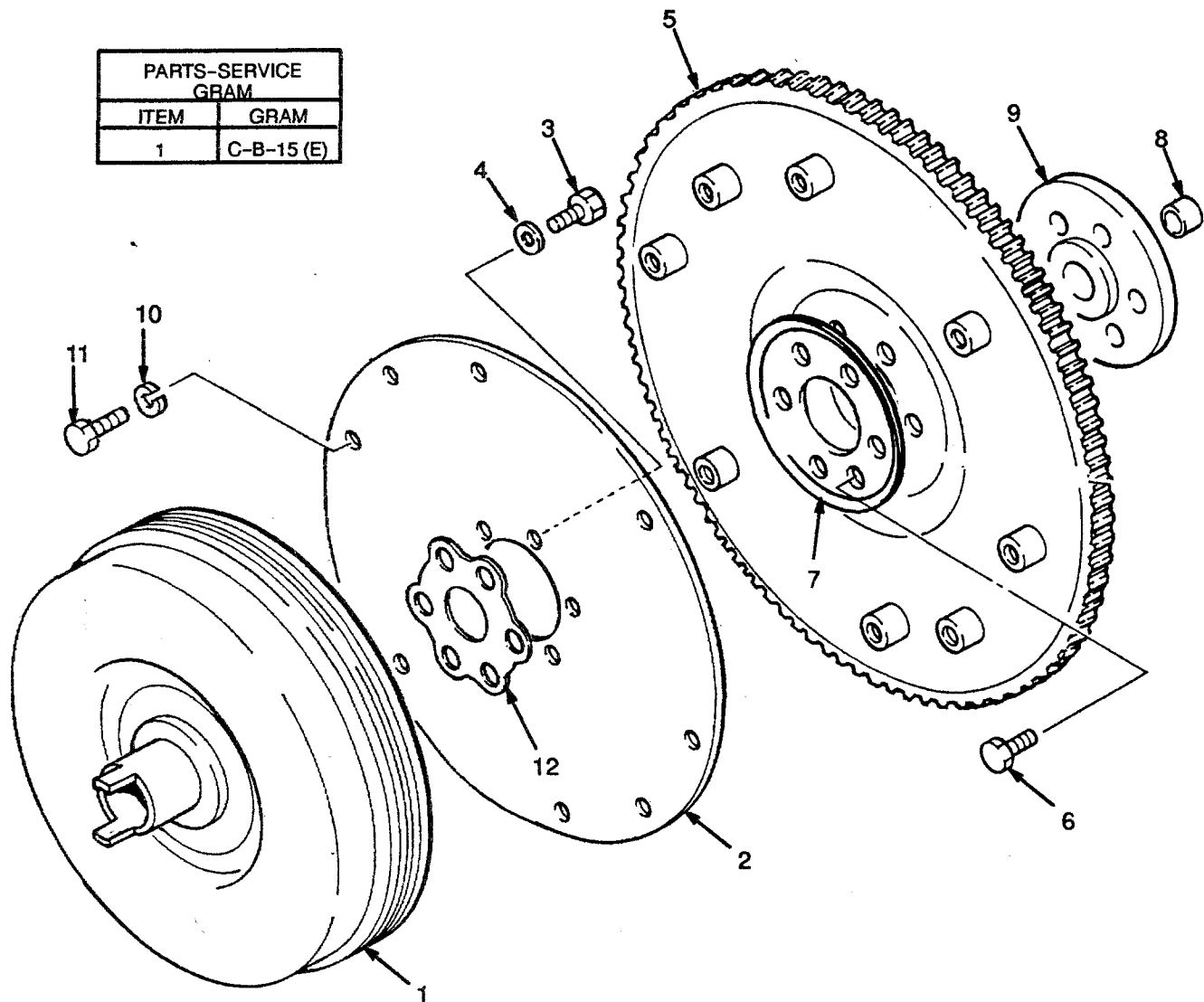
Transmission Housing
First Used on S/N D001B-3932 Page 176

Transmission Housing
Last Used on S/N D001B-3931 Page 174

Transmission Hydraulic Lines
First Used on S/N D001B-3932 Page 184

Transmission Hydraulic Lines
Last Used on S/N D001B-3931 Page 182

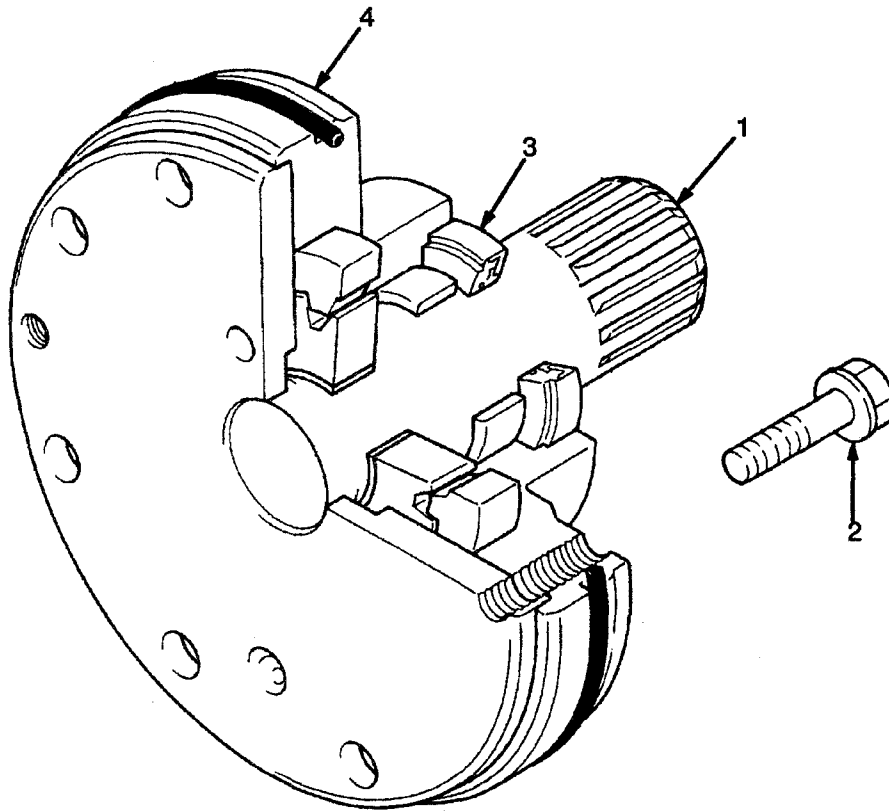
TORQUE CONVERTER LAST USED ON S/N D001B-3931 (Figure 78)



TORQUE CONVERTER
FIRST USED ON S/N
D001B-3932

<u>REF</u>	<u>PART NO.</u>	<u>NAME OF PART</u>	<u>QTY</u>	<u>REF</u>	<u>PART NO.</u>	<u>NAME OF PART</u>	<u>QTY</u>
	2023912	Torque Converter	1	8	2021380	Bush	1
1	2023993	Torque Converter	1	9 ^b	2021376	Flange	1
2	2023994	Plate	1	9 ^a	2021378	Flange	1
3	293626	Bolt	6	10	292682	Lockwasher	4
4	296420	Washer	6	11	292514	Bolt	4
5 ^a	2021362	Flywheel Assy	1	12 ^a	2021834	Washer	6
5 ^b	2021368	Flywheel Assy	1				
6 ^a	2021438	Bolt	6	^a	Petrol and LPG		
6 ^b	2021019	Bolt	6	^b	Diesel		
7 ^a	2021442	Backplate	1				

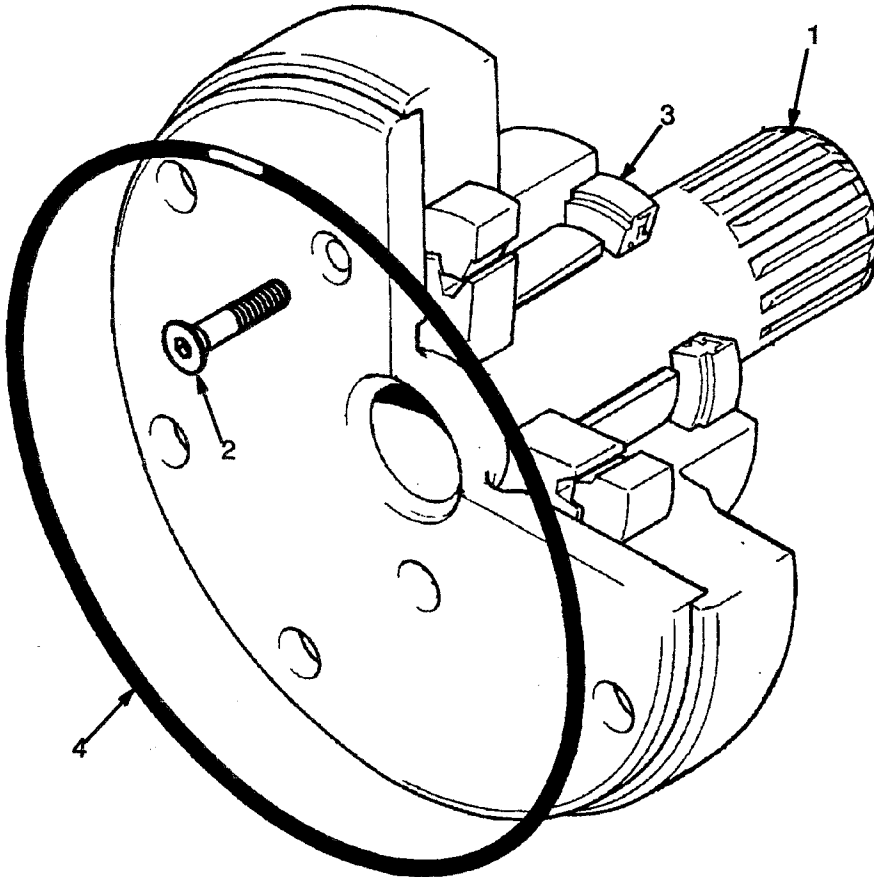
CHARGE PUMP
LAST USED ON S/N
D001B-3931
(Figure 80)



**CHARGE PUMP
LAST USED ON S/N
D001B-3931**

<u>REF</u>	<u>PART NO.</u>	<u>NAME OF PART</u>	<u>QTY</u>	<u>REF</u>	<u>PART NO.</u>	<u>NAME OF PART</u>	<u>QTY</u>
	2021344	Pump	1	3	1367600	Oil Seal	1
1	1367598	Shaft	1	4	1367599	O-Ring	1
2	1367601	Bolt	2				

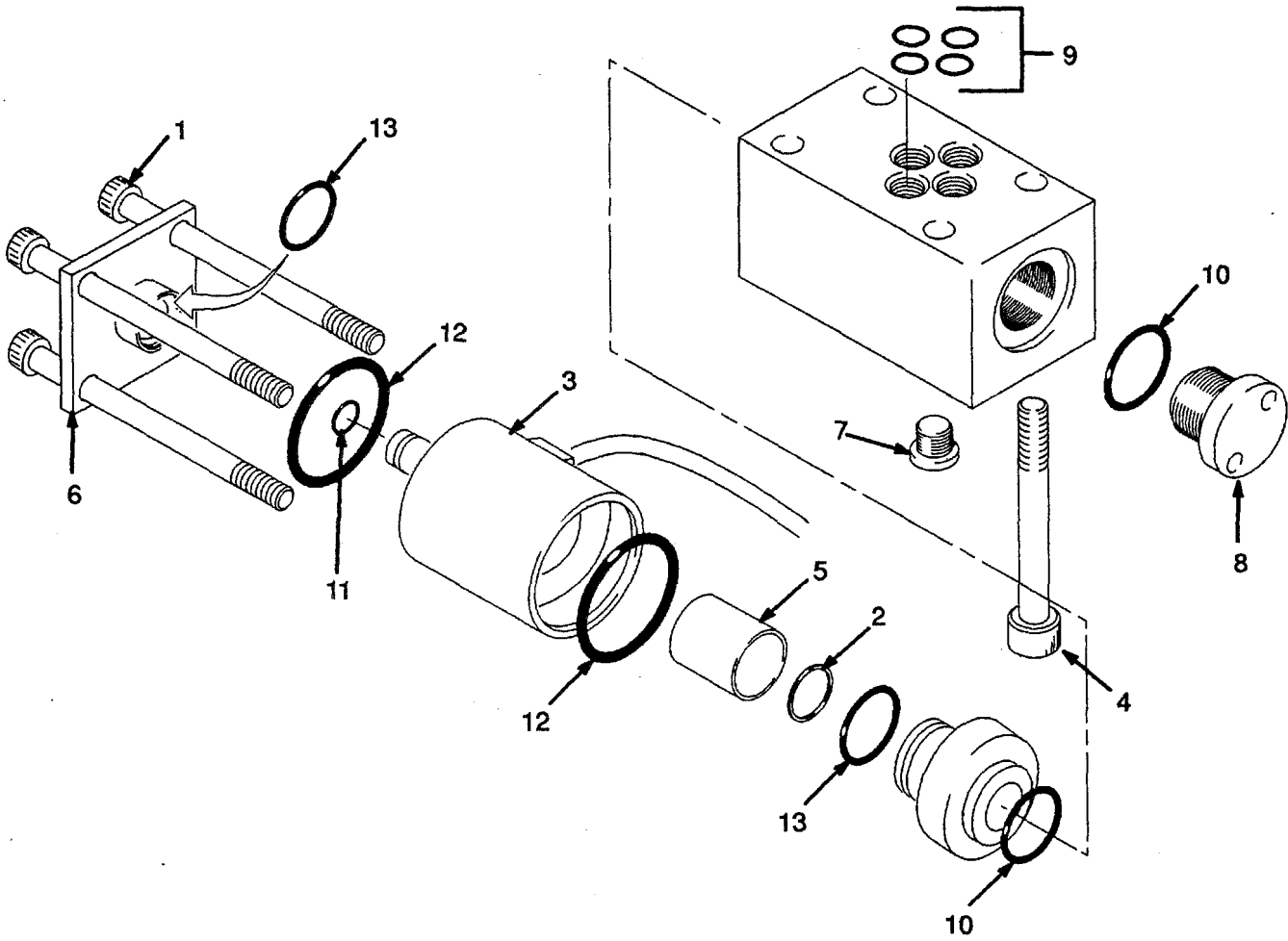
CHARGE PUMP
FIRST USED ON S/N
D001B-3932
(Figure 81)



**CHARGE PUMP
FIRST USED ON S/N
D001B-3932**

<u>REF</u>	<u>PART NO.</u>	<u>NAME OF PART</u>	<u>QTY</u>	<u>REF</u>	<u>PART NO.</u>	<u>NAME OF PART</u>	<u>QTY</u>
	2023917	Pump	1	3	2023995	Oil Seal	1
1	Shaft	1	4	2023996	O-Ring	1
2	1385124	Bolt	2				

SOLENOID VALVE (Figure 82)



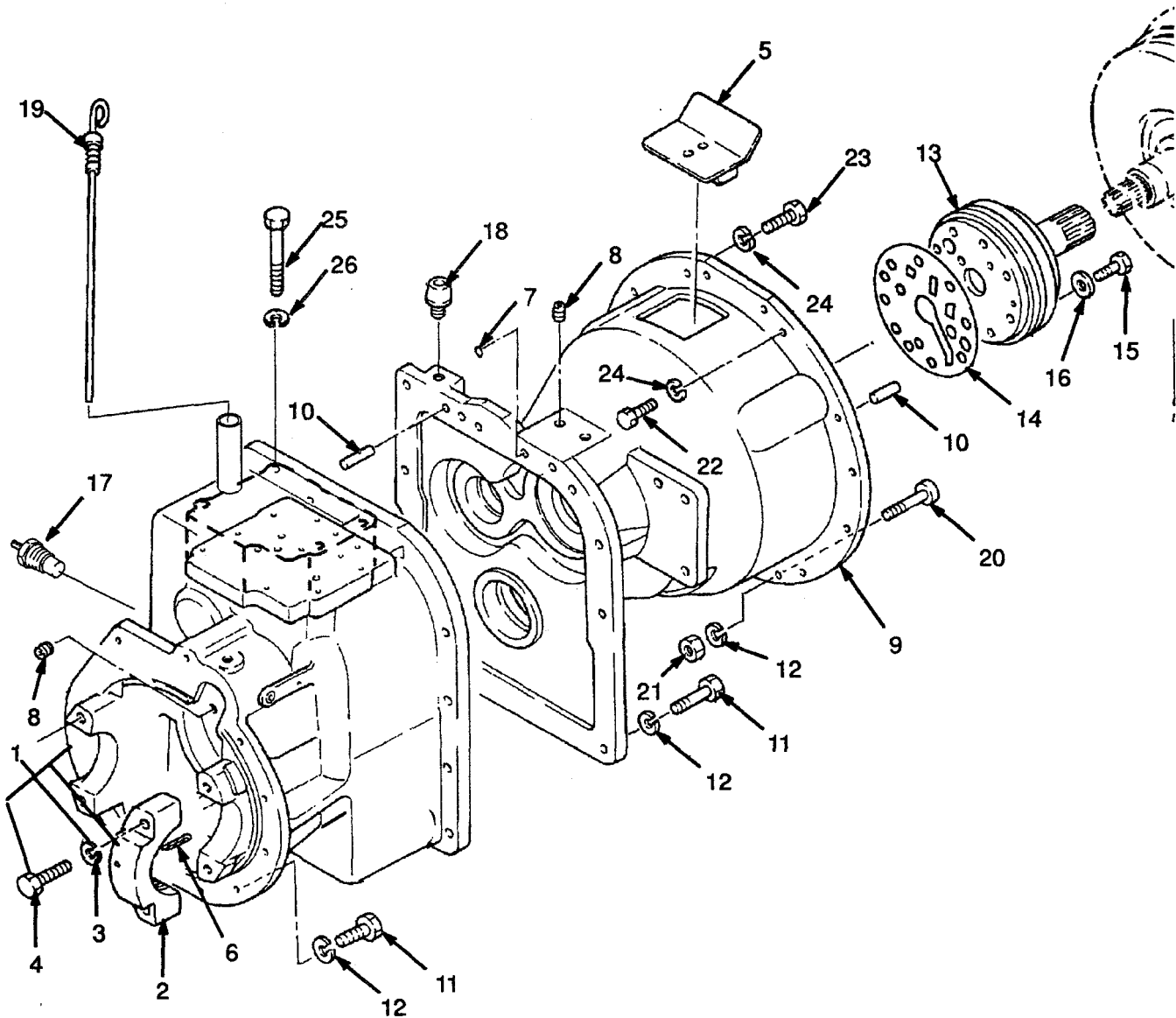
SOLENOID VALVE

REF	PART NO.	NAME OF PART	QTY	REF	PART NO.	NAME OF PART	QTY
	2021325	Solenoid Valve	1	8	1367602	Plug	1
1	1367604	Bolt	4	9 ^a	1367611	O-Ring	4
2	Retaining Ring	1	10 ^a	1367613	O-Ring	2
3	1367603	Coil	1	11 ^a	O-Ring	1
4	2021328	Bolt	4	12 ^a	O-Ring	2
5	1367607	Tube	1	13 ^a	O-Ring	2
6	1367606	Plug	1				
7	1367605	Plug	1				

^a Included In Seal Kit 1367609

TRANSMISSION HOUSING LAST USED ON S/N D001B-3931 (Figure 83)

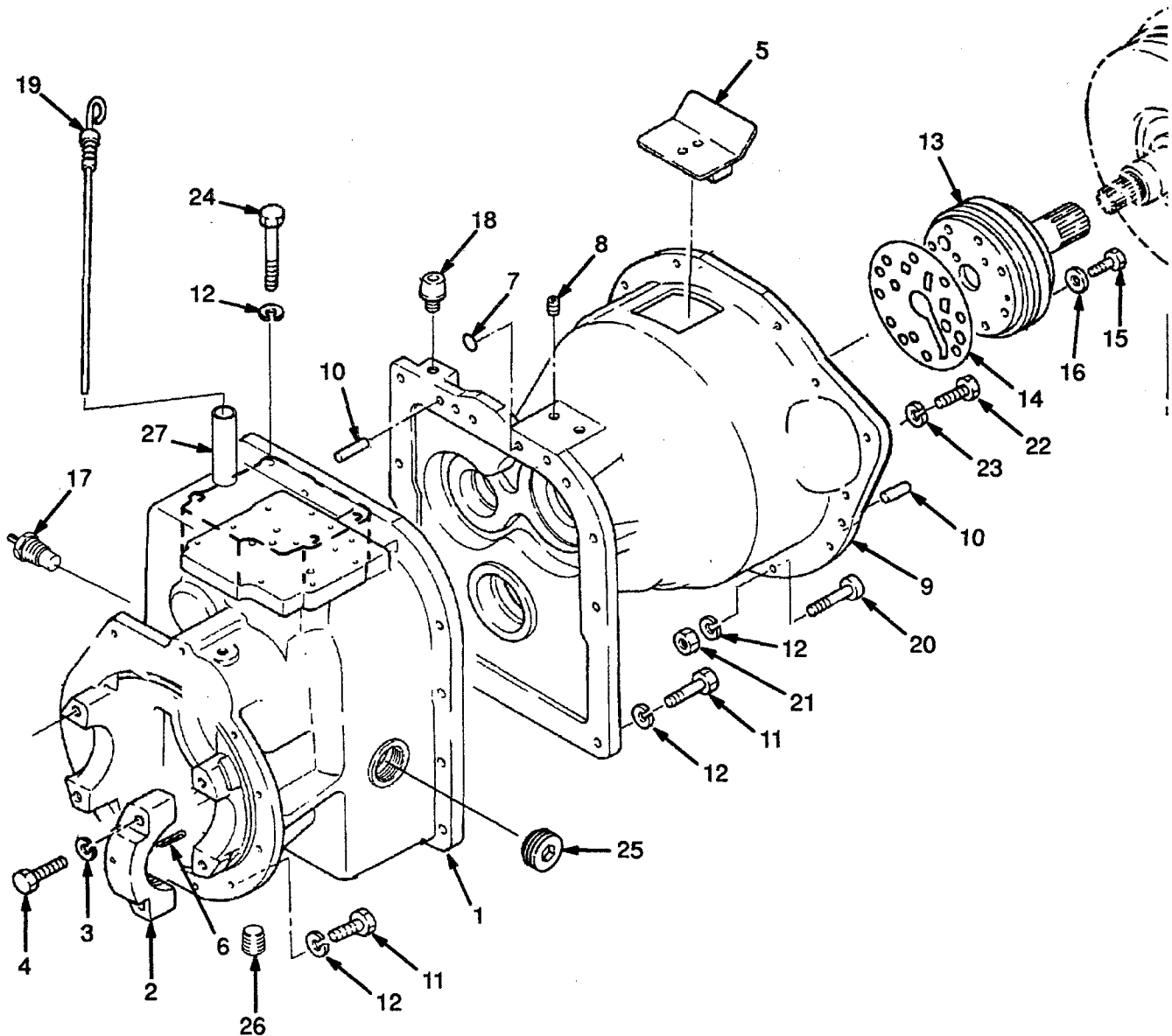
PARTS-SERVICE GRAM	
ITEM	GRAM
1	C-B-15 (E)



TRANSMISSION HOUSING
LAST USED ON S/N
D001B-3931

REF	PART NO.	NAME OF PART	QTY	REF	PART NO.	NAME OF PART	QTY
	2022547	Transmission (2,0L)	1	14	2021345	Packing	1
	2023329	Transmission (2,5L)	1	15	214364	Bolt	8
1	2021670	Case	1	16	296418	Washer	8
2	293642	Bolt	4	17	2021388	Temperature Sender	1
3	296426	Washer	4	18	2021389	Breather	1
4	2023418	Bearing Cap	2	19	2021383	Dipstick	1
5	2021390	Cover	1	20	292515	Bolt	9
6	1371656	Split Pin	2	21	136692	Nut	9
7	2021329	O-Ring	2	22	292527	Bolt (2,0L Petrol and LPG)	2
8	2021915	Plug	4	23	292531	Bolt (2,5L Diesel)	3
9	2021675	Housing	1	24	292683	Lockwasher	
10	2021336	Pin	4			(2,0L Petrol and LPG)	2
11	287860	Bolt	22	24	292683	Lockwasher (2,5L Diesel)	3
12	292682	Lockwasher	39	25	293637	Bolt	4
13	Hydraulic Pump	1	26	296420	Washer	4
		☐ Figure 80					

TRANSMISSION HOUSING FIRST USED ON S/N D001B-3932 (Figure 84)

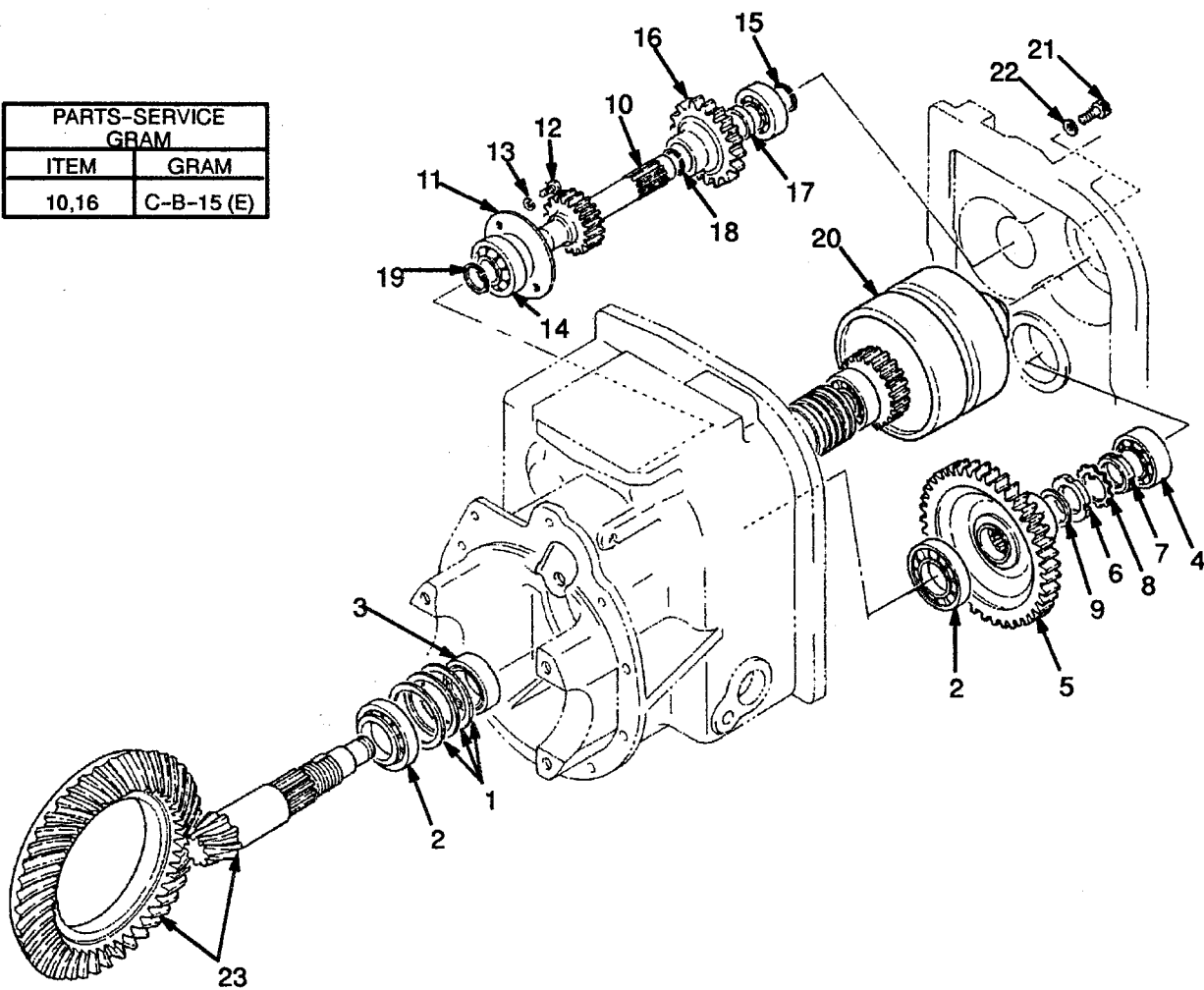


TRANSMISSION HOUSING
FIRST USED ON S/N
D001B-3932

REF	PART NO.	NAME OF PART	QTY	REF	PART NO.	NAME OF PART	QTY
	2023970	Transmission (Petrol and LPG) ..	1	15	214364	Bolt	5
	2023971	Transmission (Diesel)	1	16	296418	Washer	5
1	2026113	Case	1	17	2021388	Temperature Sender	1
2	2023418	Bearing Cap	2	18	2021389	Breather	1
3	296426	Washer	4	19	2021383	Dipstick	1
4	293692	Bolt	4	20	292515	Bolt	9
5	2021390	Cover	1	21	136692	Nut	9
6	1371656	Split Pin	2	22	292527	Bolt (2,0L Petrol and LPG)	2
7	2021329	O-Ring	2	23	292531	Bolt (2,5L Diesel)	3
8	2021915	Plug	4	24	292683	Lockwasher	
9	2026112	Housing	1			(2,0L Petrol and LPG)	2
10	2021336	Pin	4	24	292683	Lockwasher (2,5L Diesel)	3
11	2023422	Bolt	10	25	292531	Hex Head Bolt	4
12	292682	Lockwasher	38	26	2023976	Plug	1
13	Hydraulic Pump	1	27	2021917	Plug	1
		☞ Figure 81		28	2022354	Pipe	1
14	2021345	Joint	1				

TRANSMISSION GEARS LAST USED ON S/N D001B-3931 (Figure 85)

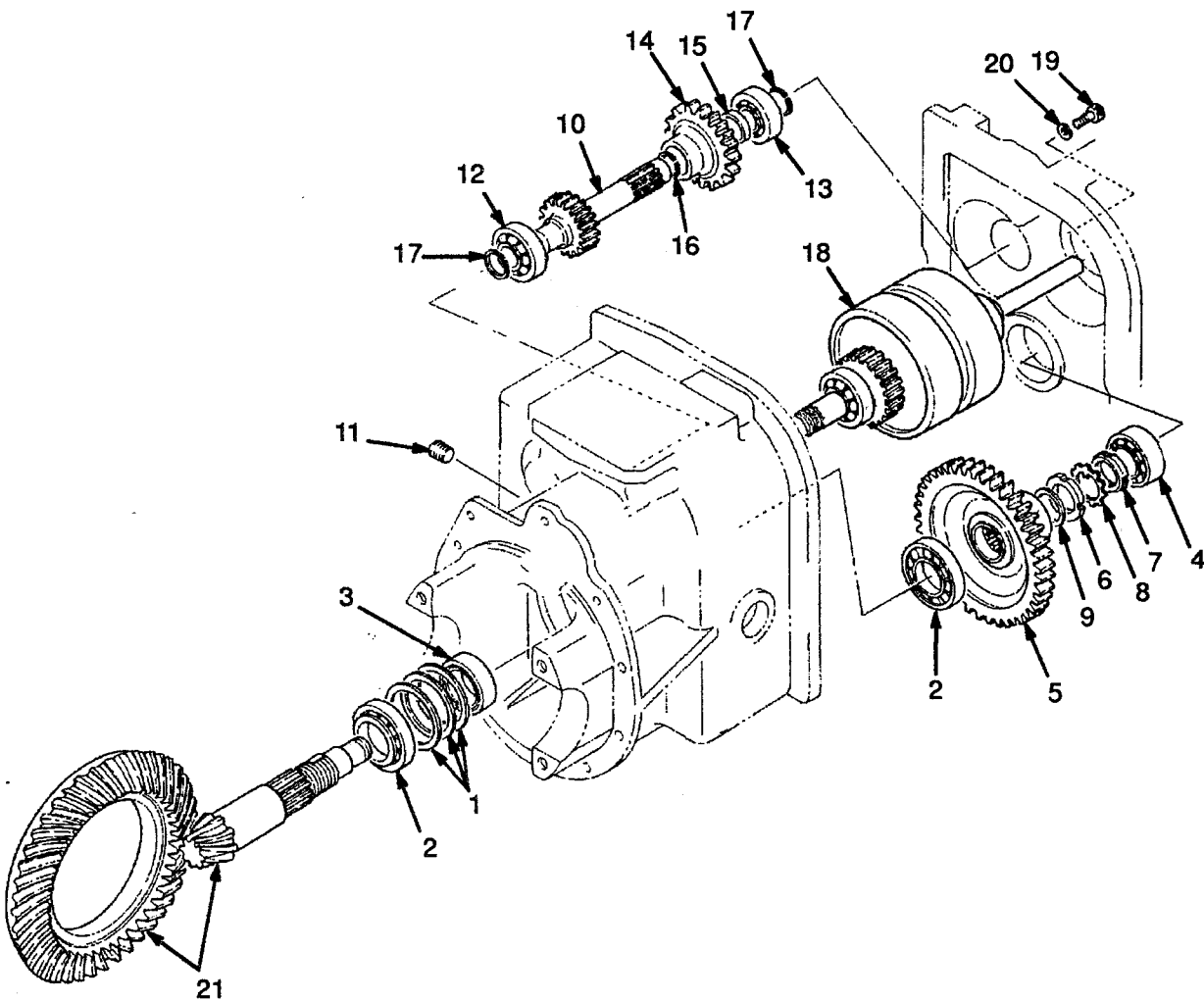
PARTS-SERVICE GRAM	
ITEM	GRAM
10,16	C-B-15 (E)



**TRANSMISSION GEARS
 LAST USED ON S/N
 D001B-3931**

REF	PART NO.	NAME OF PART	QTY	REF	PART NO.	NAME OF PART	QTY
	2022547	Transmission (2,0L Petrol and LPG)	1	9	2021914	Lockwasher	1
	2023329	Transmission (2,5L)	1	10 ^a	2021309	Shaft (2,0L Petrol and LPG) ...	1
1	2021293	Shim (0,10 mm)	1	10	2021313	Shaft (2,5L Diesel)	1
1	2021294	Shim (0,20 mm)	1	11	2021314	Plate	1
1	2021295	Shim (0,30 mm)	AR	12	287851	Hex Head Bolt	2
1	2021296	Shim (0,40 mm)	AR	13	292681	Lockwasher	2
1	2021298	Shim (0,50 mm)	1	14	2021300	Bearing	1
2	2022352	Roller Bearing	2	15	2021318	Bearing	1
3	2021299	Oil Seal	1	16	2021319	Gear	1
4	2021300	Bearing	1	17	2021320	Washer	1
5	2021301	Gear (2,0L Petrol and LPG)	1	18	2021321	Retaining Ring	1
5	2021302	Gear (2,5L Diesel)	1	19	3041266	Retaining Ring	2
6	2021912	Locknut	1	20	Hydraulic Clutch	1
7	2021303	Nut	1			☐ Figure 89	
8	2021305	Lockwasher	1	21	1368867	Screw	2
				22	292680	Lockwasher	2
				23	2021283	Crown Wheel and Pinion	1

TRANSMISSION GEARS FIRST USED ON S/N D001B-3932 (Figure 86)



TRANSMISSION GEARS
FIRST USED ON S/N
D001B-3932

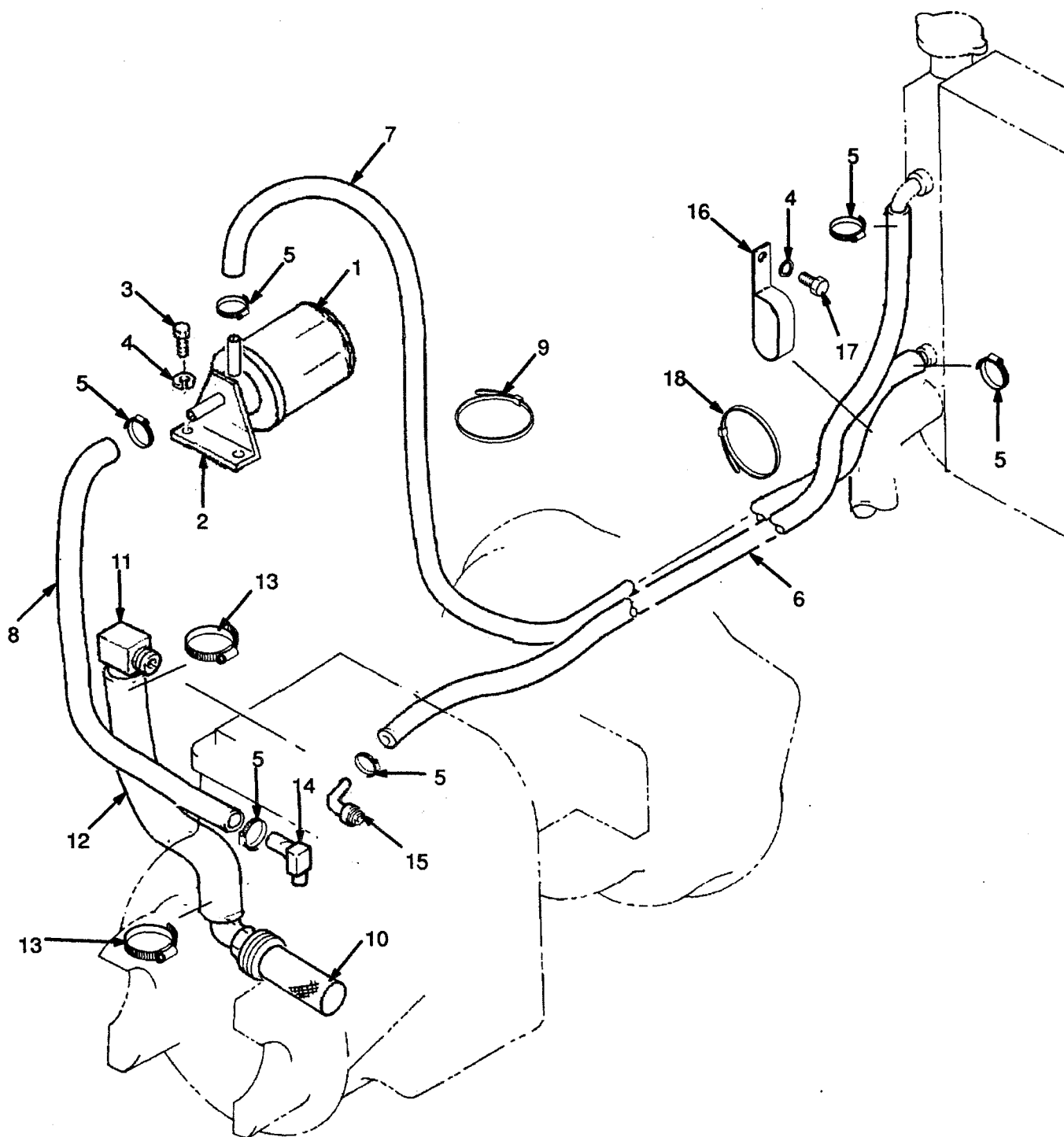
REF	PART NO.	NAME OF PART	QTY	REF	PART NO.	NAME OF PART	QTY
	2023970	Transmission (2,0L Petrol and LPG)	1	8	2021305	Lockwasher	1
	2023971	Transmission (2,5L Diesel)	1	9	2021914	Lockwasher	1
1	2021293	Shim (0,10 mm)	AR	10	2023920	Shaft	1
1	2021294	Shim (0,20 mm)	AR	11	2021915	Plug	1
1	2021295	Shim (0,30 mm)	AR	12	2023975	Bearing	1
1	2021296	Shim (0,40 mm)	AR	13	2021318	Bearing	1
1	2021298	Shim (0,50 mm)	AR	14	2023941	Gear	1
2	2022352	Roller Bearing	2	15	2021320	Washer	1
3	2021299	Oil Seal	1	16	2021321	Retaining Ring	1
4	2021300	Bearing	1	17	1374796	Retaining Ring	2
5	2023923	Gear (2,0 Petrol and LPG)	1	18	Hydraulic Clutch	1
5	2023922	Gear (2,5L Diesel)	1			☐ Figure 90	
6	2021912	Locknut	1	19	292515	Screw	2
7	2021303	Nut	1	20	292682	Screw	2
				21	2021283	Crown Wheel and Pinion	1

TRANSMISSION HYDRAULIC LINES

LAST USED ON S/N

D001B-3931

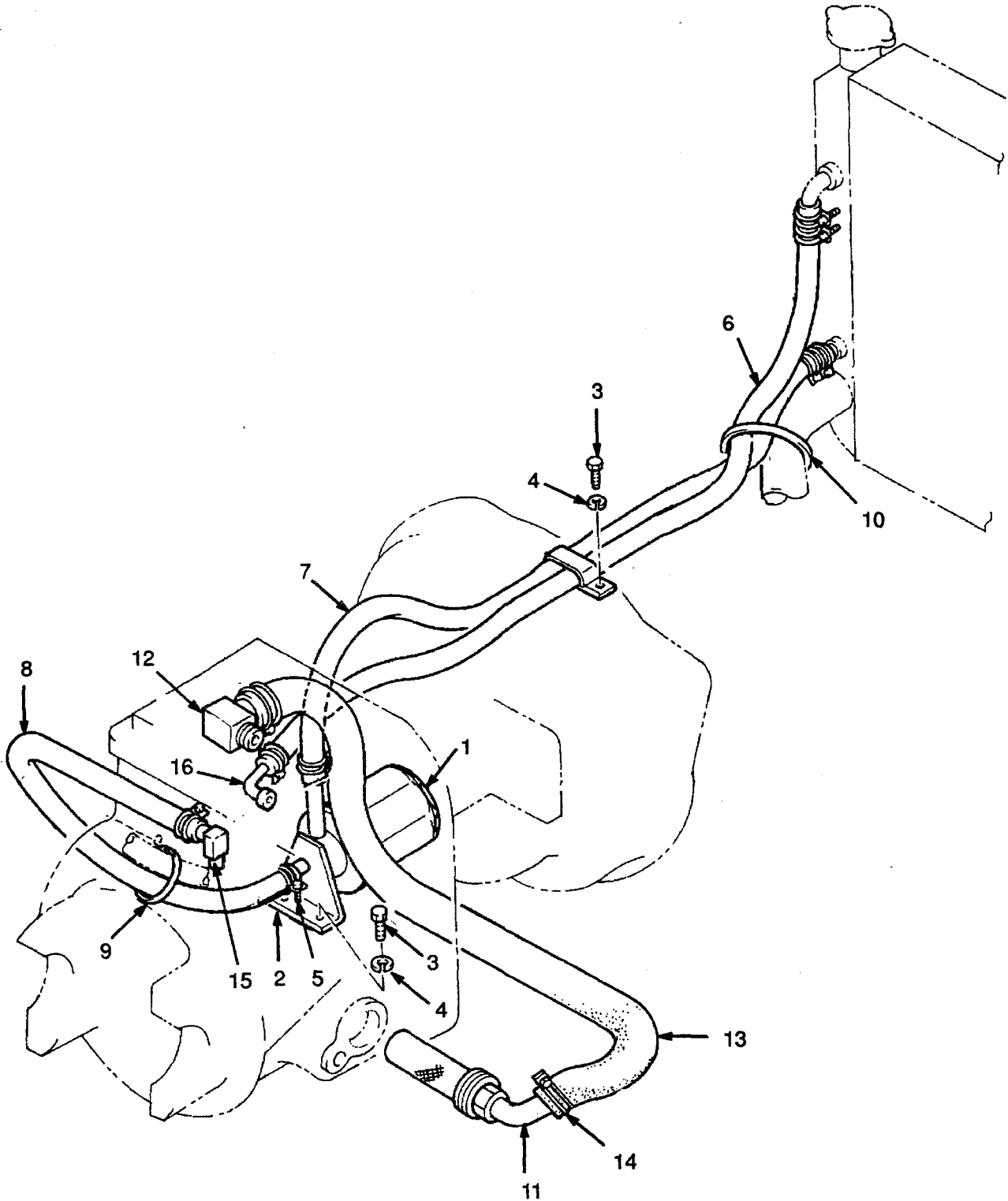
(Figure 87)



TRANSMISSION HYDRAULIC LINES
LAST USED ON S/N
D001B-3931

<u>REF</u>	<u>PART NO.</u>	<u>NAME OF PART</u>	<u>QTY</u>	<u>REF</u>	<u>PART NO.</u>	<u>NAME OF PART</u>	<u>QTY</u>
1	2021461	Filter	1	10	2021404	Suction	1
2	2021462	Bracket	1	11	2021405	Elbow	1
3	287805	Hex Head Bolt	2	12	2021406	Hose	1
4	292681	Washer	2	13	2022829	Clamp	2
5	130845	Clamp	6	14	2023719	Elbow	1
6	2022884	Hose	1	15	2021407	Tube	1
7	2022885	Hose	1	16	176454	Clamp	1
8	2022826	Hose	1	17	287851	Hex Head Bolt	1
9	397676	Strap Clamp	1	18	137852	Clamp	1

TRANSMISSION HYDRAULIC LINES FIRST USED ON S/N D001B-3932 (Figure 88)

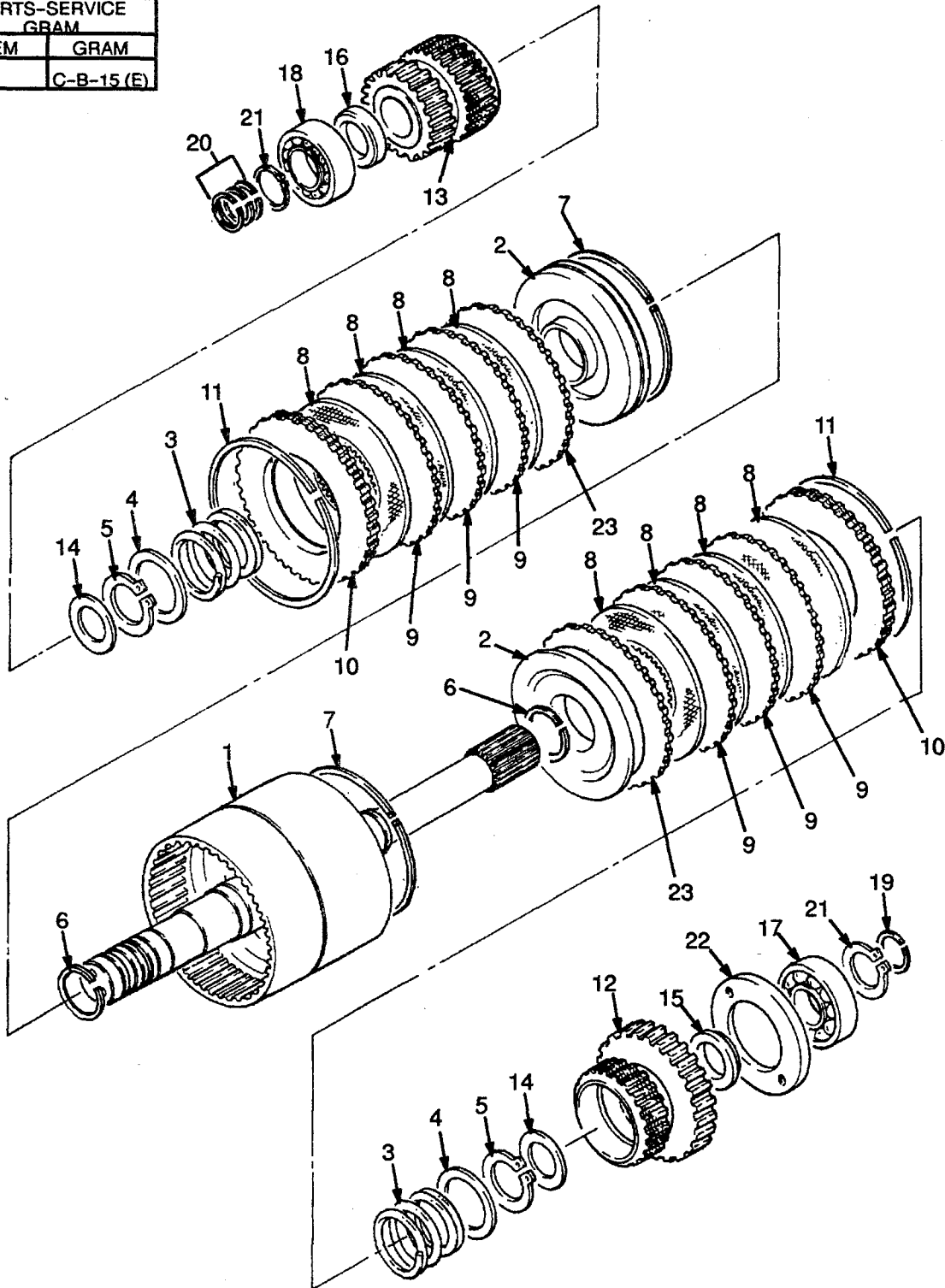


TRANSMISSION HYDRAULIC LINES
FIRST USED ON S/N
D001B-3932

<u>REF</u>	<u>PART NO.</u>	<u>NAME OF PART</u>	<u>QTY</u>	<u>REF</u>	<u>PART NO.</u>	<u>NAME OF PART</u>	<u>QTY</u>
1	2021461	Filter	1	9	2022545	Strap Clamp	1
2	2021462	Bracket	1	10	397676	Strap Clamp	1
3	302269	Hex Head Bolt	2	11	2021404	Suction Strainer	1
4	292681	Washer	2	12	2021405	Elbow	1
5	2022723	Clamp	8	13	2021406	Hose	1
5	2022724	Clamp	AR	14	2022829	Clamp	2
6	2023932	Hose	1	15	2021423	Elbow	1
7	2021464	Hose	1	16	2021407	Tube	1
8	2022826	Hose	1				

HYDRAULIC CLUTCH LAST USED ON S/N D001B-3931 (Figure 89)

PARTS-SERVICE	
GRAM	
ITEM	GRAM
	C-B-15 (E)



**HYDRAULIC CLUTCH
LAST USED ON S/N
D001B-3931**

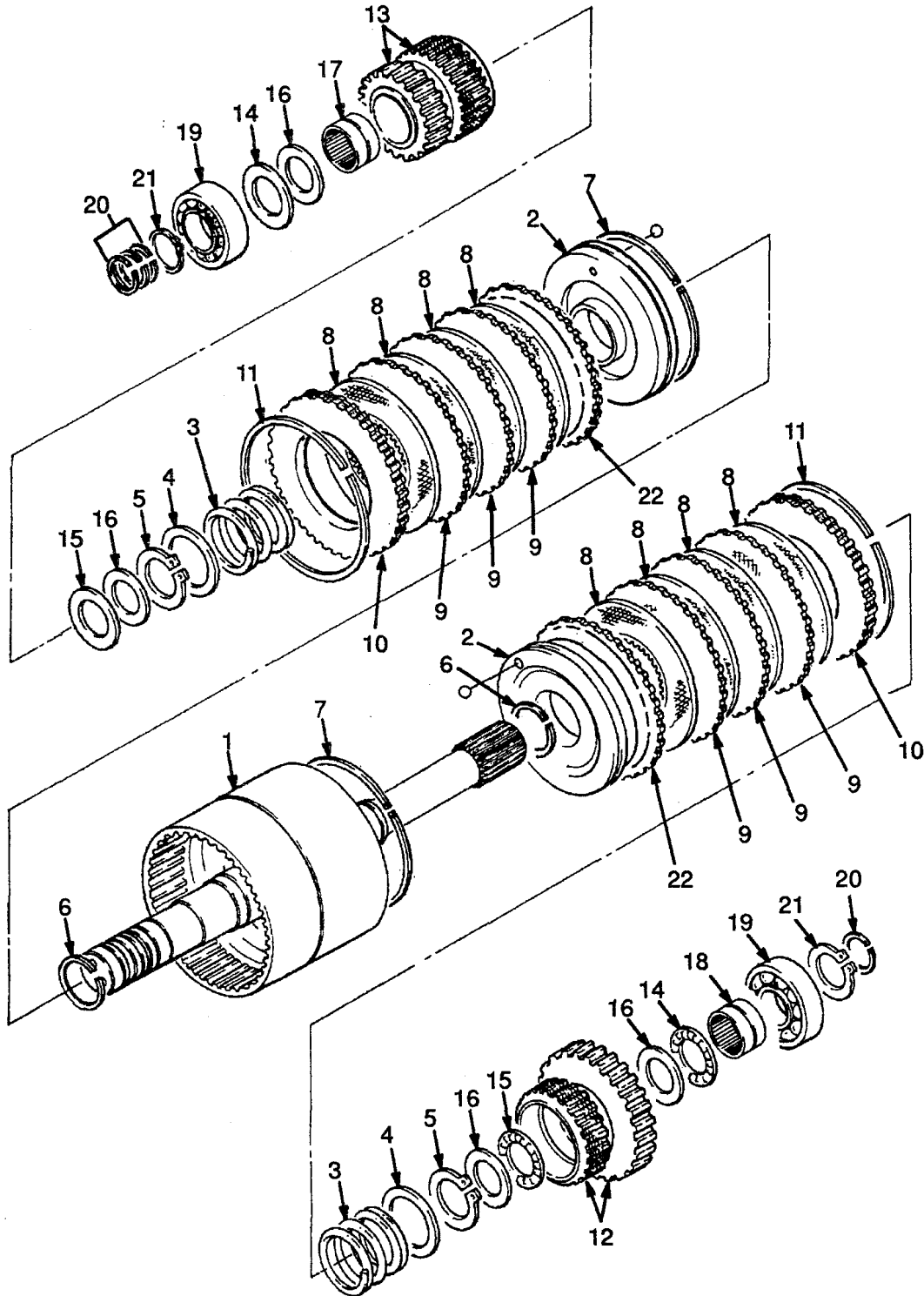
KEY

A: Diesel 2,5L

B: Gasoline And Lpg 2,0L

REF	PART NO.	NAME OF PART	QTY		REF	PART NO.	NAME OF PART	QTY	
			A	B				A	B
	2021306	Hydraulic Clutch	1		13	1367583	Gear (Forward)	1	
	2021308	Hydraulic Clutch	1	..	14	1367575	Thrust Washer	2	2
1	Shaft	1	1	15	1367576	Thrust Washer	1	1
2	1367420	Piston	2	2	16	1367577	Thrust Washer	1	1
3	1367407	Spring	2	2	17	1367578	Bearing	1	1
4	1367421	Guide	2	2	18	1367579	Bearing	1	1
5	1374532	Circlip	2	2	19	ab	1	1
6	ab	Seal Ring	2	2	20	ab	3	3
7	ab	Ring	2	2	21	3041266	Circlip	2	2
8	cb	Friction Disc	8	8	22	1367580	Plate	1	1
9	cb	Friction Gear	6	6	23	cb	2	2
10	cb	Backplate	2	2					
11	1367422	Circlip	2	2	a	Included In Seal Kit 1367582			
12	1367423	Gear (Reverse)	1	1	b	Included In Repair Kit 1368101			
13	1367424	Gear (Forward)	1	..	c	Kit-Drive Plate 1367581			

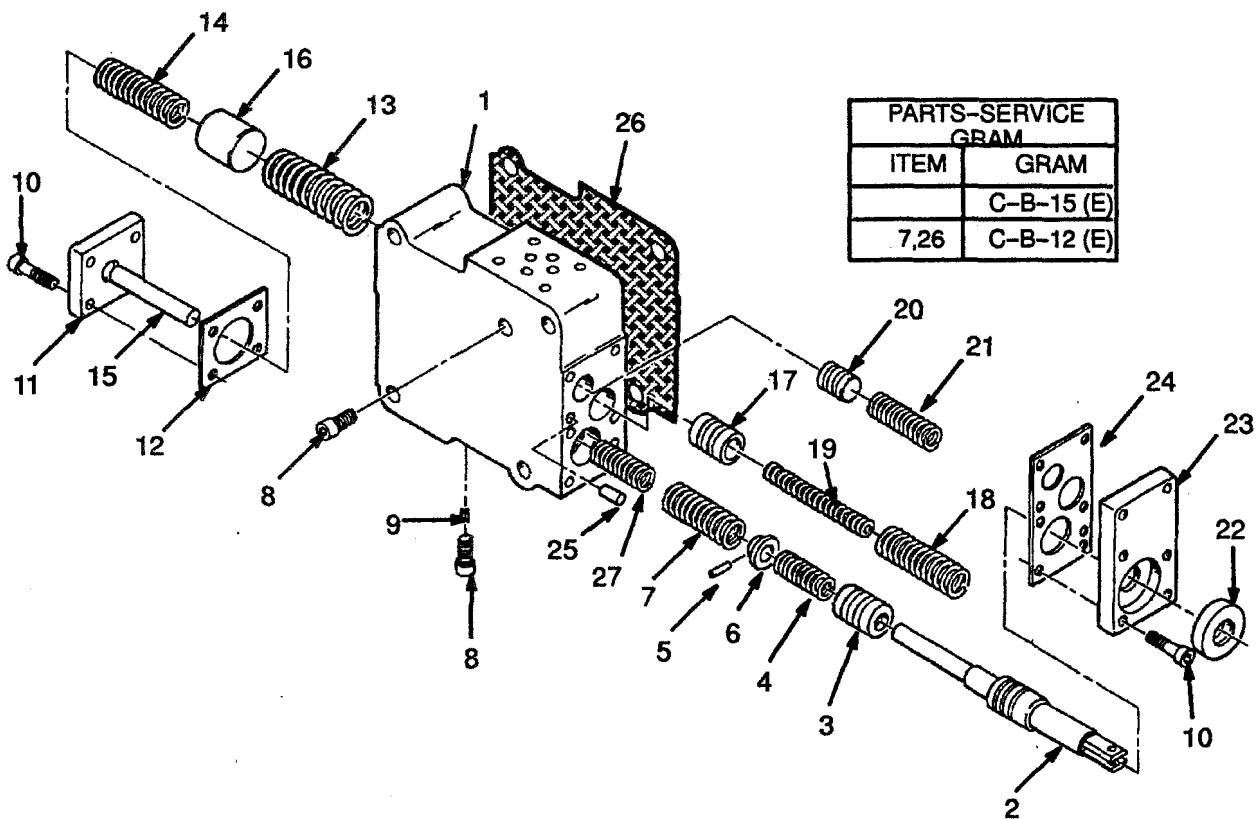
HYDRAULIC CLUTCH FIRST USED ON S/N D001B-3932 (Figure 90)



**HYDRAULIC CLUTCH
 FIRST USED ON S/N
 D001B-3932**

REF	PART NO.	NAME OF PART	QTY	REF	PART NO.	NAME OF PART	QTY
	2026321	Hydraulic Clutch	1	14	d	Thrust Bearing	2
1		Shaft	1	15	d	Thrust Bearing	2
2	2026008	Piston	2	16	d	Thrust Bearing	4
3	1367407	Spring	2	17	2026013	Bearing	1
4	2026009	Guide	2	18	2026012	Bearing	2
5	1374532	Circlip	2	19	1367579	Bearing	2
6	ab	Seal Ring	2	20	ab	Seal Ring	4
7	ab	Ring	2	21	1374796	Circlip	2
8	bc	Friction Disc	8	22	bc	Plate	2
9	bc	Friction Gear	6				
10	bc	Backplate	2	a		Included In Seal Kit 2023989	
11	1367422	Circlip	2	b		Included In Repair Kit 2023991	
12	2026323	Gear (Reverse)	1	c		Included In Kit-Drive Plate 2023990	
13	2026324	Gear (Forward)	1	d		Included In Repair Kit 2026326	

**CONTROL VALVE
LAST USED ON S/N
D001B-2931
(Figure 91)**

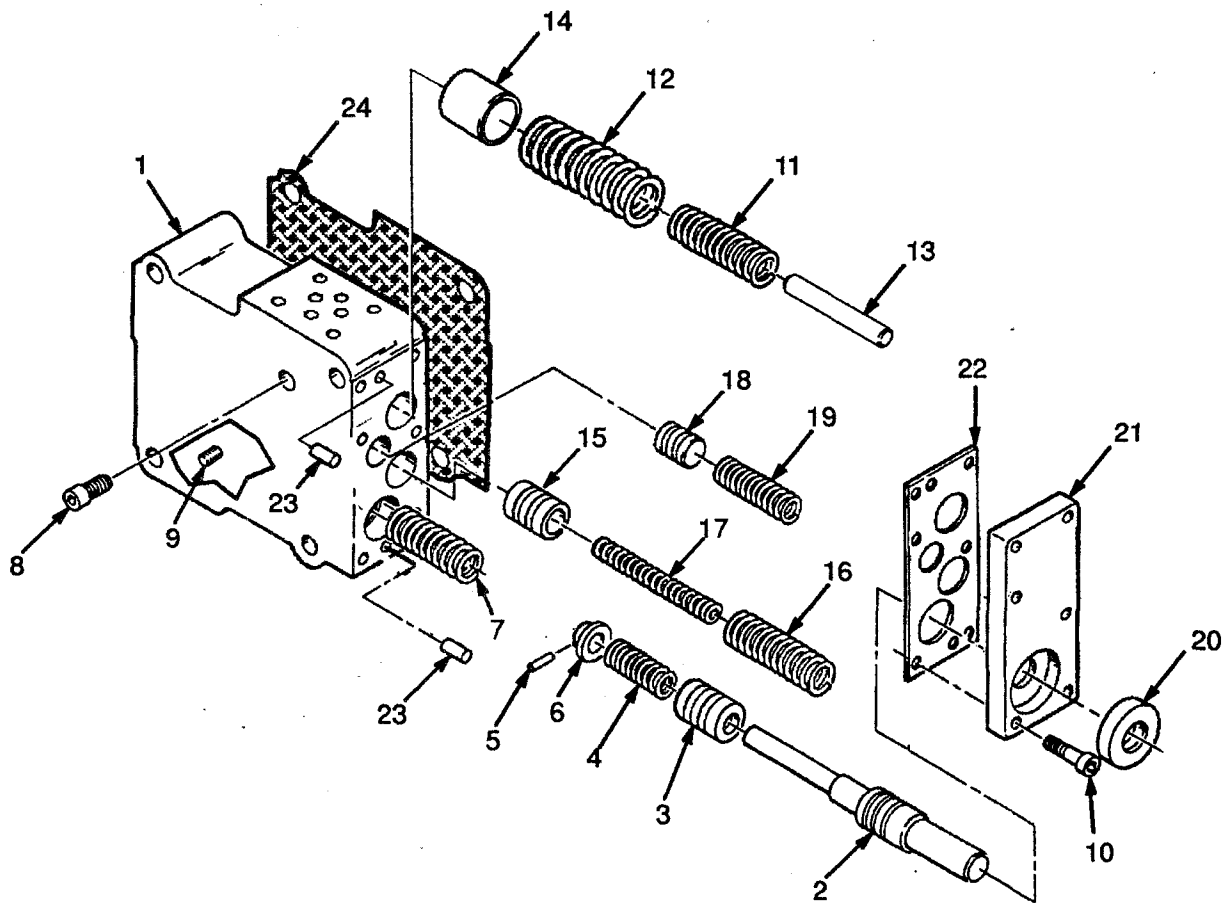


**CONTROL VALVE
 LAST USED ON S/N
 D001B-2931**

REF	PART NO.	NAME OF PART	QTY	REF	PART NO.	NAME OF PART	QTY
	2021323	Control Valve Assy	1	16	1367412	Piston	1
1	Body	1	17	1367413	Piston	1
2	1367399	Inching Spool	1	18	1367414	Spring	1
3	1367400	Piston	1	19	1367415	Spring	1
4	1367401	Spring	1	20	1367416	Piston	1
5	1367402	Pin	1	21	1367417	Spring	1
6	1367403	Stop	1	22 ^a	Oil Seal	1
7	Spring	1	23	1367418	Cover	1
8	2021917	Plug	2	24 ^a	Joint	1
9	1367406	Choke	1	25	Pin	2
10	1344851	Bolt	10	26	2021345	Joint	1
11	1367408	Cover	1	27 ^b	Spring	1
12 ^a	Joint	1				
13	1367409	Spring	1				
14	1367410	Spring	1				
15	1367411	Stop	1				

^a Included In Repair Kit 1367419
^b Included In Repair Kit 2023481

CONTROL VALVE FIRST USED ON S/N D001B-3932 (Figure 92)

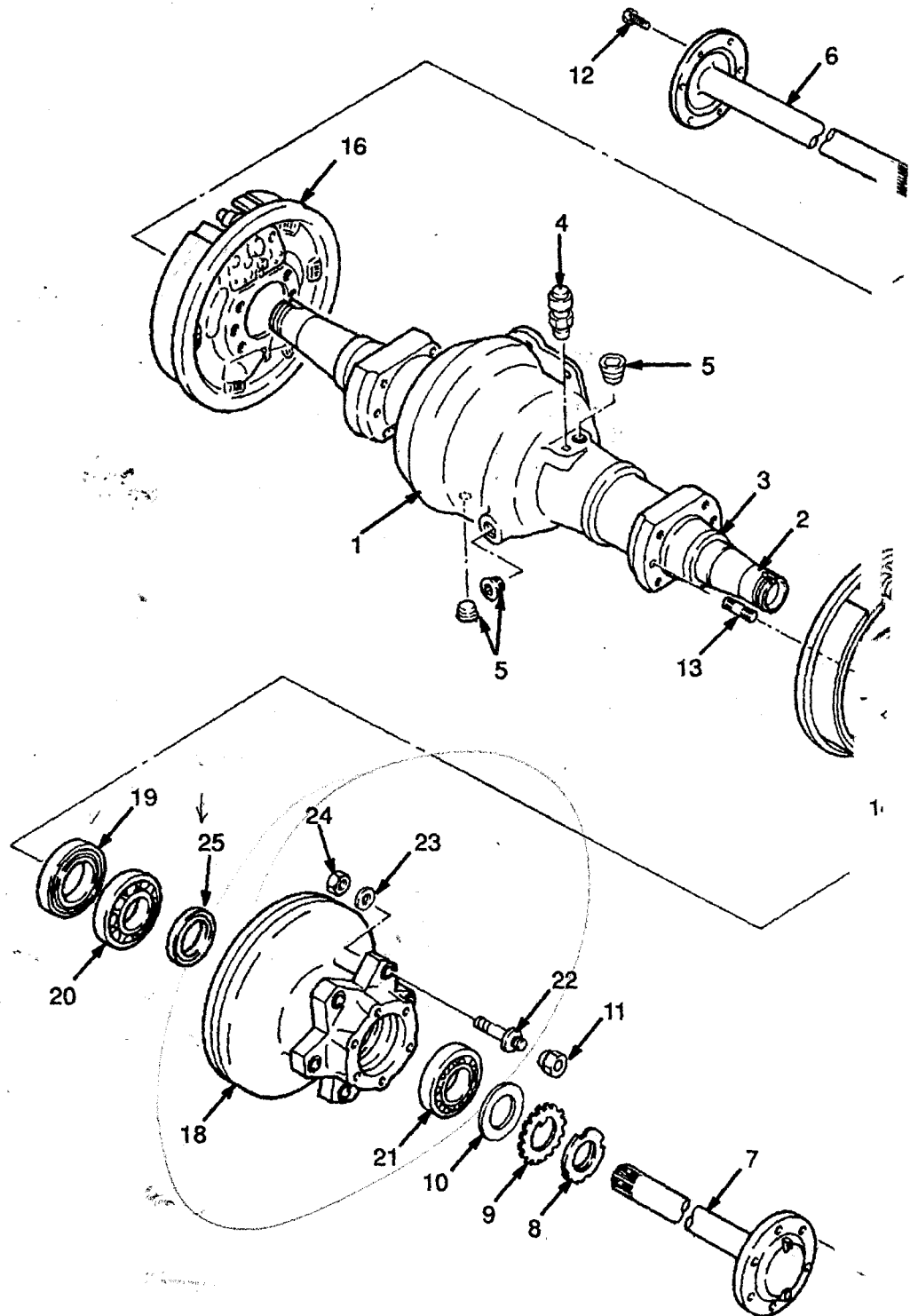


DIFFERENTIAL

REF	PART NO.	NAME OF PART	QTY	REF	PART NO.	NAME
	2021282	Differential Assy	1	6	1367615	Cas
1	1367617	Pinion	2	7	2021286	Bolt
2	1367616	Gear	2	8	2021287	Retr
3	1367619	Spacer	2	9	2021288	Ro
4	1367620	Pin	1	10	2021283	Ge
5	1367618	Shaft	1			

Страница

DRIVE AXLE (Figure 94)

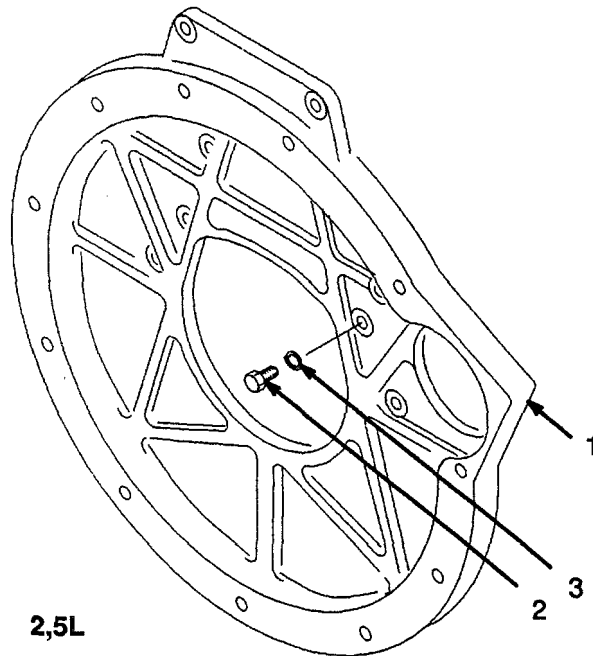
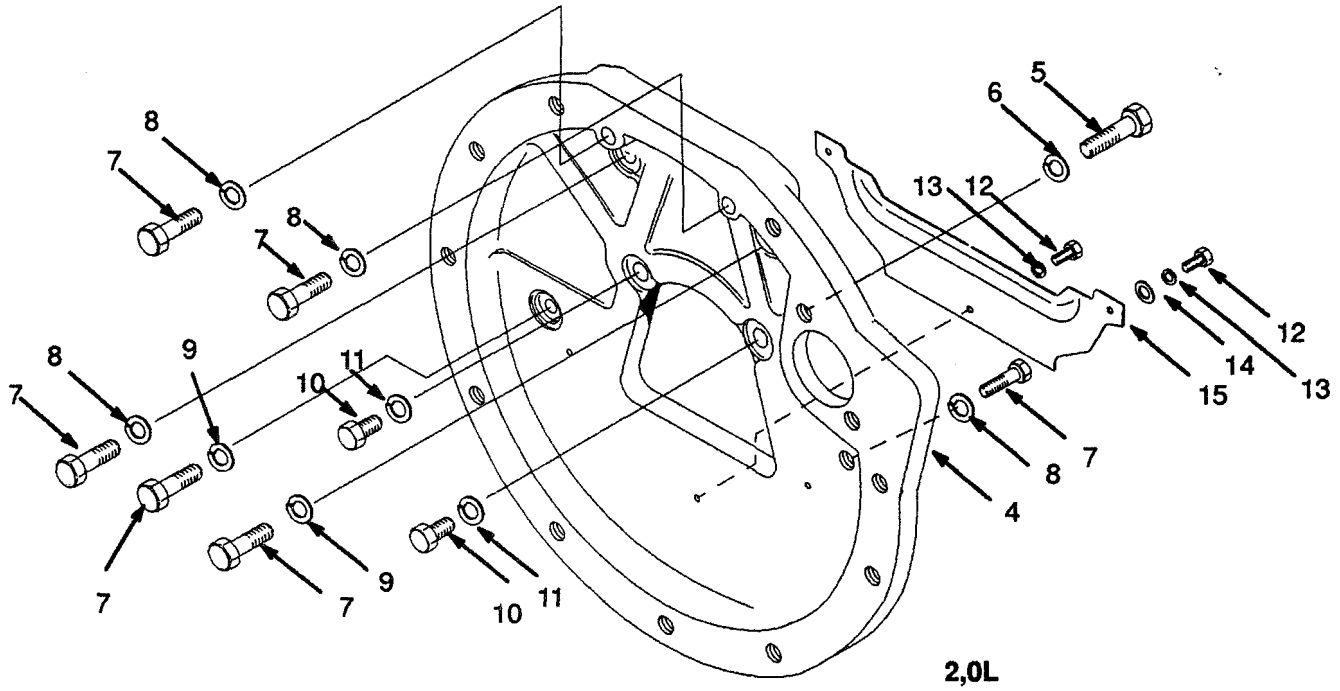


Hyundai

DRIVE AXLE

REF	PART NO.	NAME OF PART	QTY	REF	PART NO.	NAME OF PART	QTY
		Drive Axle	1	13	2022729	Bolt	12
	2021666	Housing Assy	1	14	2021834	Washer	12
1	2022825	Housing	1	15	2021595	Nut	12
2	Sleeve	2	16	Brake Assy (RH)	1
3	2021491	Sleeve	2			☐ Figure 103	
4	2021510	Breather	1	17	Brake Assy (LH)	1
5	15962	Plug	3			☐ Figure 103	
6	2021565	Shaft (RH)	1	18	2021668	Hub	2
7	2021567	Shaft (LH)	1	19	2021554	Oil Seal	2
8	2021918	Nut	2	20	2021555	Bearing (Inner)	2
9	2021588	Lockwasher	2	21	2021288	Bearing (Outer)	2
10	2021592	Washer	2	22	2021556	Bolt	12
11	2021593	Nut	12	23	1366814	Washer	12
12	2021919	Bolt	12	24	303120	Nut	12
				25	2021557	Oil Seal	2

END PLATE (Figure 95)



END PLATE

REF	PART NO.	NAME OF PART	QTY	REF	PART NO.	NAME OF PART	QTY
1	2023501	End Plate (Diesel)	1	9	296424	Washer	2
2	2022251	Bolt	8	10	136749	Hex Head Bolt	2
3	292682	Lockwasher	8	11	292681	Lockwasher	2
4	2023500	End Plate (Petrol and LPG)	1	12	302256	Bolt	3
5	2022718	Screw	2	13	292680	Lockwasher	3
6	292682	Lockwasher	2	14	2021432	Washer	2
7	2021646	Bolt	6	15	2022250	Cover	1
8	292684	Lockwasher	4				