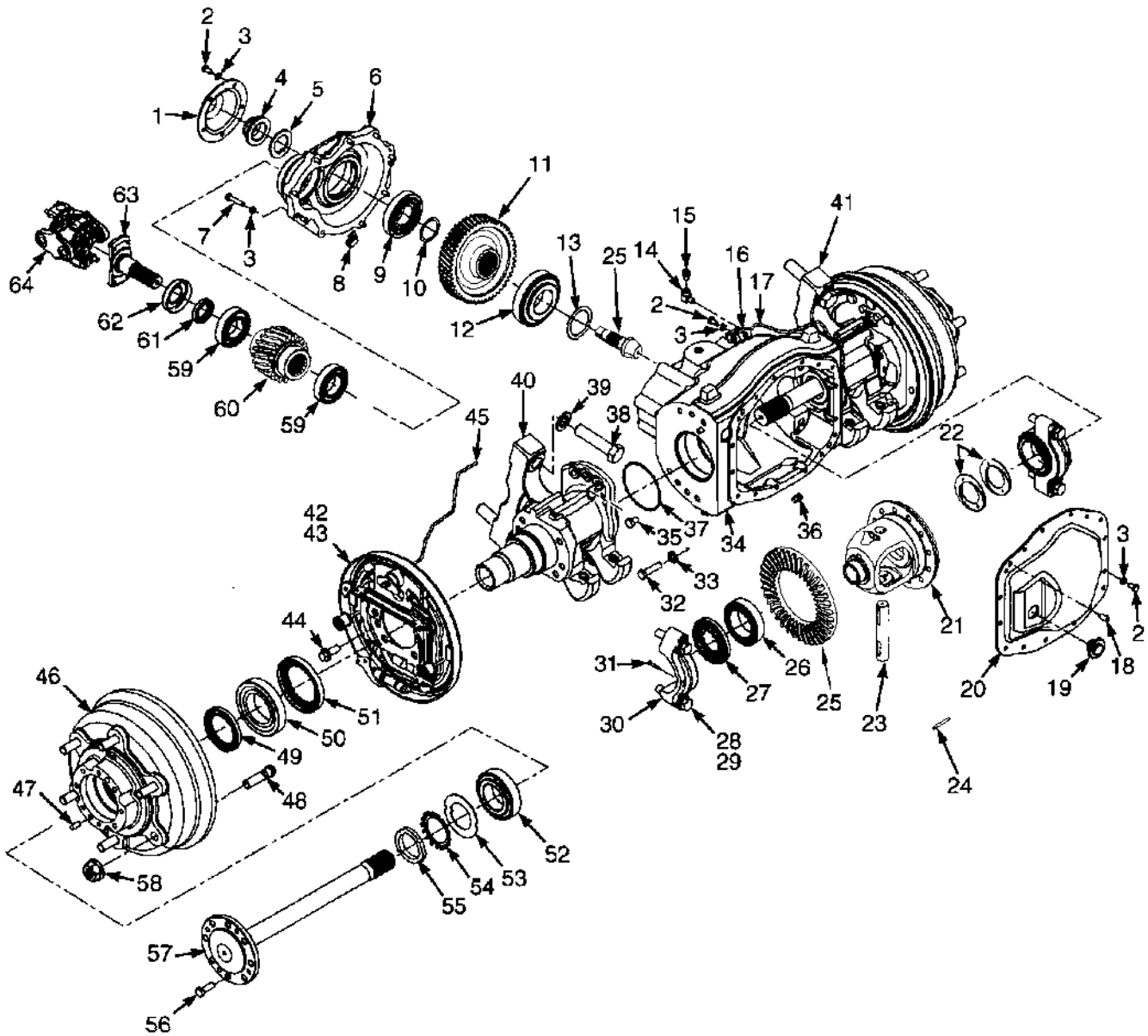


DRIVE AXLE (Figure 6-1)



BP070018

DRIVE AXLE

ITEM	PART NO.	DESCRIPTION	QTY
	1529379	Drive Axle Assembly.....	1
1	1516536	Cover (Pinion)	1
2	287851	Capscrew	18
3	292681	Lockwasher	27
4	2026861	Nut.....	1
5	1530588	Washer	1
6	1516535	Housing (Drop Box).....	1
7	292508	Capscrew	9
8	164488	Clamp.....	1
9	2022352	Roller Bearing	1
10	1516335	Shim (0.50 mm).....	AR
10	1516331	Shim (0.12 mm).....	AR
10	1516332	Shim (0.15 mm).....	AR
10	1516333	Shim (0.18 mm).....	AR
10	1516334	Shim (0.25 mm).....	AR
11	1517575	Gear	1
12	1529628	Roller Bearing	1
13	1520755	Shim.....	AR
13	1520752	Shim.....	AR
13	1569912	Shim.....	AR
13	1569913	Shim.....	AR
13	1569914	Shim.....	AR
13	1520753	Shim.....	AR
13	1569915	Shim.....	AR
13	1520754	Shim.....	AR
14	16151	Fitting.....	1
15	21420	Breather.....	1
16	1591122	Manifold Assembly	1
16	1588050	Manifold.....	1
16	1510126	Capscrew (Button Head).....	2
16	1532350	Formed Bracket.....	1
16	292680	Lockwasher.....	2
17	2059935	Tube (LH).....	1
18	302385	Pin.....	5
19	1516075	Plug.....	1
20	1532734	Cover (Center Section).....	1
21	2054381	Differential	1
21	1598536	Gear Kit.....	1
22	1565325	Washer (Side Gear).....	2
23	1593763	Shaft.....	1
24	1593694	Split Pin.....	1
25	2054792	Hypoid Gear Set.....	1
26	2021288	Bearing.....	2
27	1531148	Retainer.....	2
28	a 293692	Capscrew	4
29	a 296434	Washer	4
30	a	Bearing Cap	2
31	15241	Cotter Pin	2
32	287837	Capscrew	12
33	296422	Washer	12
34	1542864	Housing Assembly (Center)	1

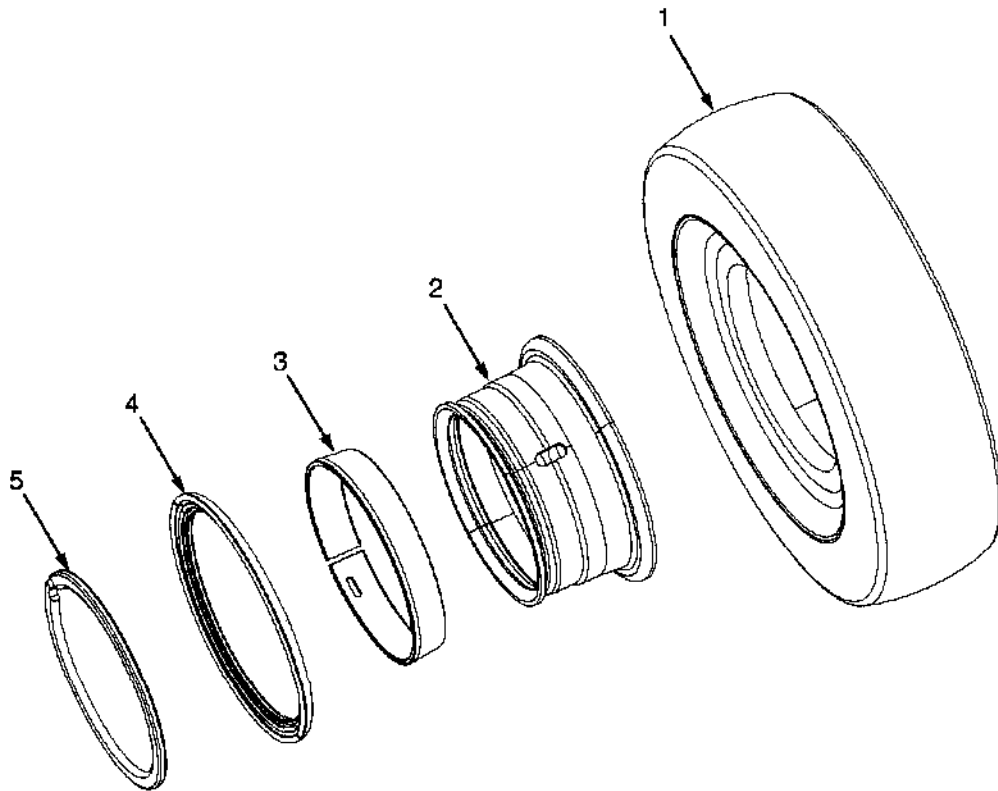
DRIVE AXLE

ITEM	PART NO.	DESCRIPTION	QTY
34	234038	Dowel Pin	4
34	296426	Washer (Hardened)	4
34	293692	Capscrew	4
35	1521809	Plug	1
36	234038	Dowel Pin	4
37	2027828	O-Ring	2
38	226430	Capscrew	4
39	296434	Washer	4
40	1506876	Hanger (RH) (Assembly)	1
41	1506875	Hanger (LH) (Assembly)	1
42	1552768	Brake Assembly (LH) (a Figure 8-3)	1
43	1552769	Brake Assembly (RH) (a Figure 8-3)	1
44	2021286	Bolt	16
45	2059936	Tube (RH)	1
46	1509835	Hub Assembly	2
46	1509847	Hub	1
47	302385	Pin	2
48	1509870	Bolt (Hub)	6
49	2021557	Oil Seal	1
50	1525632	Roller Bearing	1
51	2021554	Oil Seal	1
52	2021555	Bearing	1
53	2021592	Washer (Wheel Bearing)	2
54	2021588	Lockwasher	2
55	2021918	Nut	2
56	293630	Capscrew	16
57	1536309	Axle Shaft	2
58	1517836	Wheel Nut	12
59	1523479	Ball Bearing	2
60	1517577	Drive Gear	1
61	1522377	Oil Seal	1
62	1516534	Dust Cover	1
63	1517673	Input Shaft	1
64	1547757	Drive Shaft Assembly	1
64	1566461	Yoke	1
64	1566462	U-Joint	2

FOOTNOTES:

a Included With Center Housing

DRIVE TIRES AND WHEELS (Figure 6-2)



BP070018

KEY:

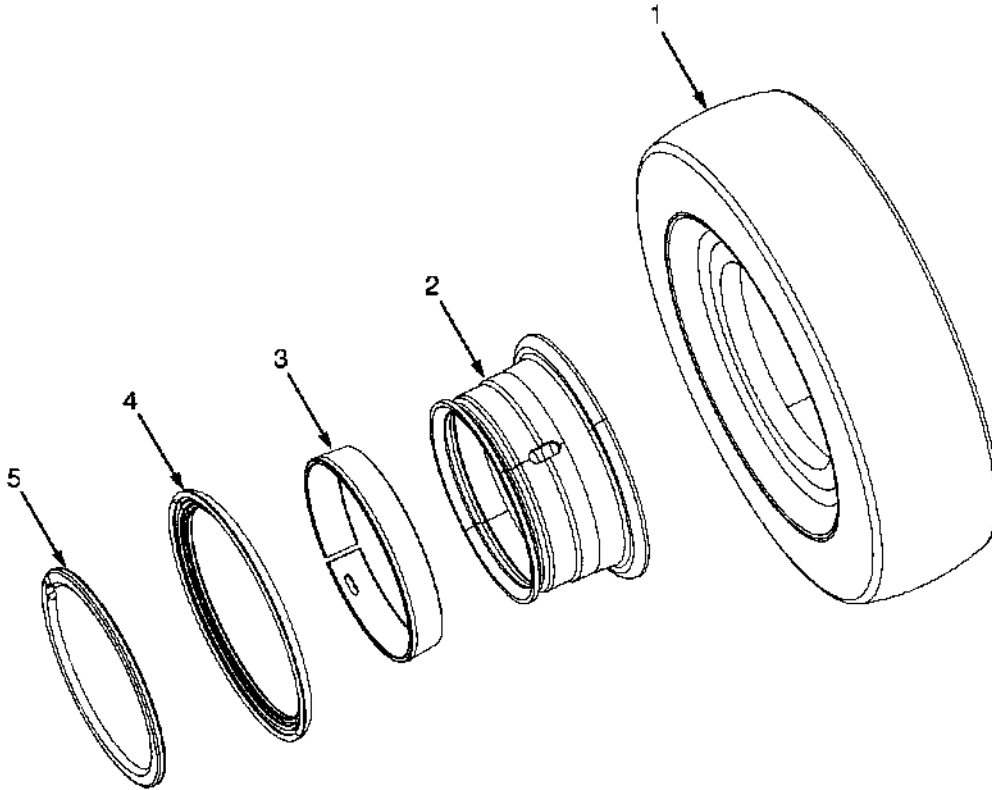
- A: Narrow Tread**
- B: Intermediate Tread**
- C: Wide Tread**

ITEM	PART NO.	DESCRIPTION	QTY		
			A	B	C
1	1544232	Tire	2	2	..
1	a 1539639	Tire	2	2	2
1	a 1603493	Tire (Non-Marking)	2	2	2
2	2067044	Wheel	2
2	2067046	Wheel	2	2	..
2	a 2067045	Wheel	2
2	a 2067047	Wheel	2	..
2	a 2067048	Wheel (H1.60-1.8FT)	2
3	1580426	Side Ring	1	1	1
4	1580427	Tapered Bead Seal Ring	1	1	1
5	161894	Locking Ring	1	1	1

FOOTNOTES:

- a Snap On Tire

DRIVE TIRES AND WHEELS (Figure 6-3) PNEUMATIC RADIAL



BP070018

KEY:

A: Narrow Tread

B: Intermediate Tread

ITEM	PART NO.	DESCRIPTION	QTY	
			A	B
1	1471832	Tire Assembly	2	2
1	1462616	Tubeless Bead Seal	1	1
1	1358178	Tire (Michelin XZM)	1	1
1	1471922	Bead Seal Valve	1	1
2	2067044	Wheel	2	..
2	2067046	Wheel	2
3	1580426	Side Ring	1	1
4	1580427	Tapered Bead Seal Ring	1	1
5	161894	Locking Ring	1	1