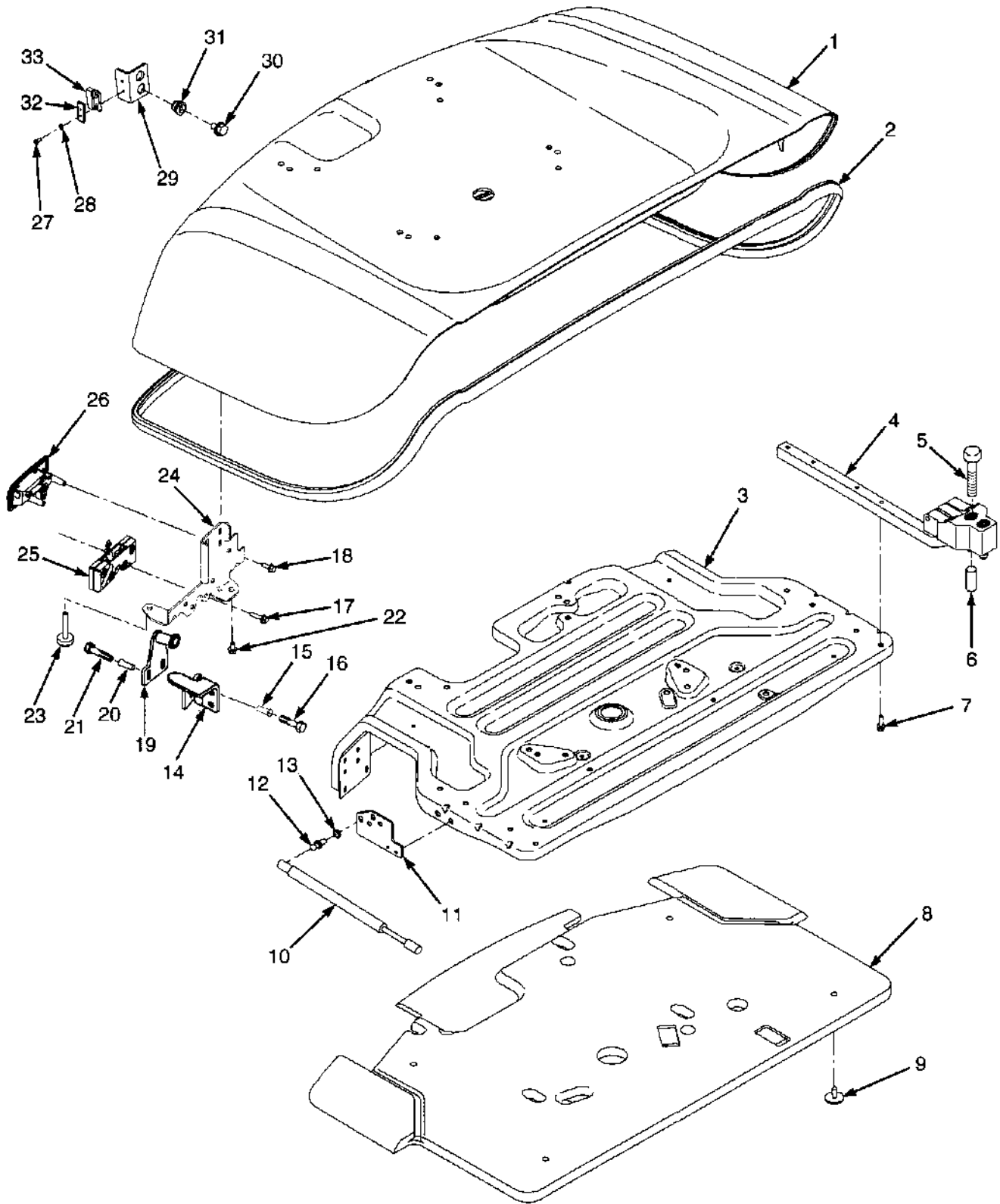


HOOD (Figure 1-1)

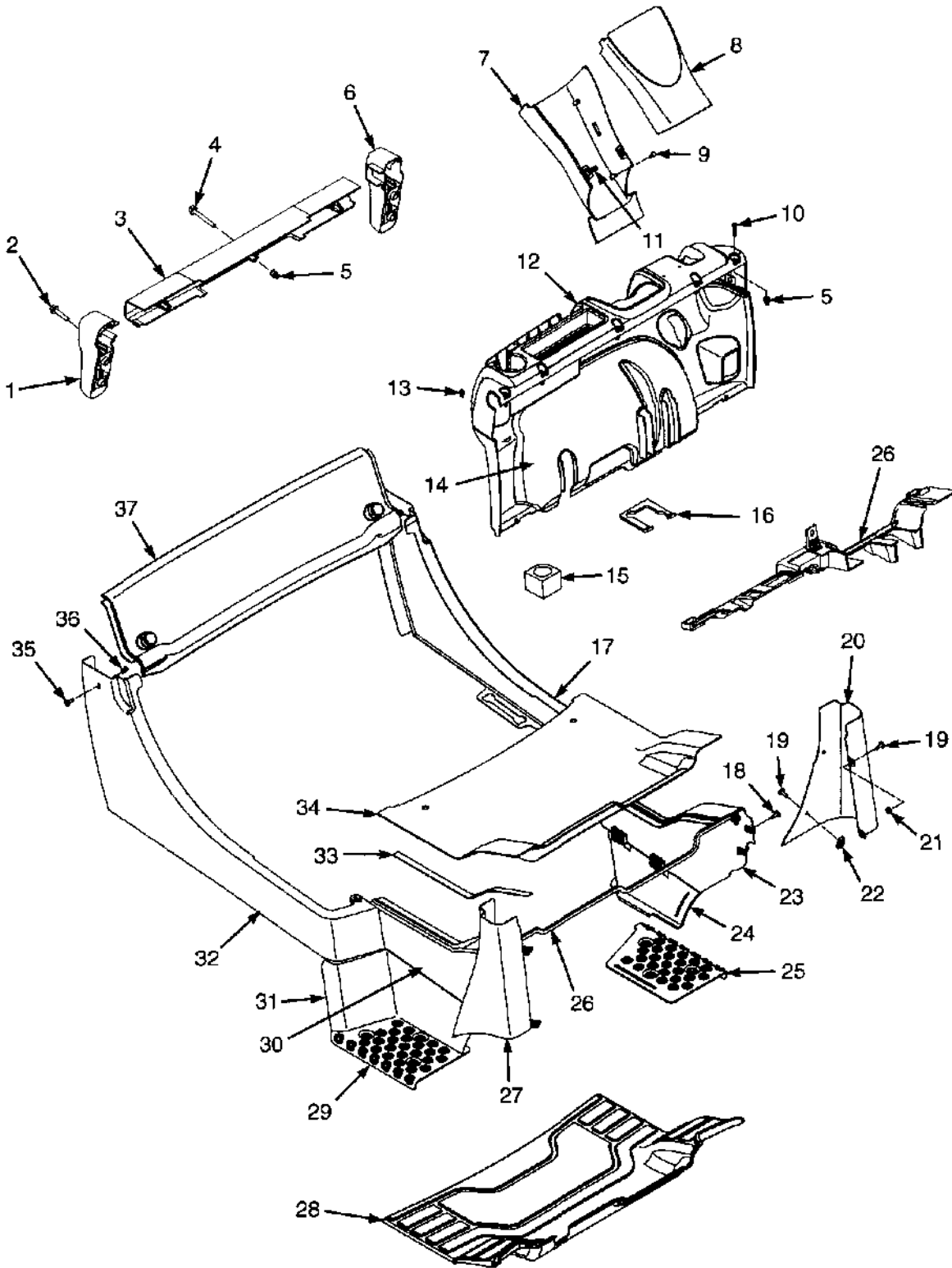


HP120766

HOOD

ITEM	PART NO.	DESCRIPTION	QTY
1	1564008	Hood Assembly (Standard).....	1
1	1567097	Hood Assembly (Used with Overhead Exhaust).....	1
1	1585585	Hood Assembly (Used with Swival Seat).....	1
1	1589729	Hood Assembly (Used with Swival Seat and Overhead Exhaust).....	1
1	1569172	Hood Assembly (Vented).....	1
1	1585586	Hood Assembly (Vented, Used with Swival Seat).....	1
2	1578698	Seal (Hood).....	1
3	1564010	Reinforcement.....	1
4	1547970	Hinge.....	2
5	296030	Capscrew.....	4
6	1530244	Insert.....	4
7	1583611	Capscrew.....	10
8	1548493	Liner.....	1
9	1304971	Fastener.....	4
10	1563497	Gas Spring.....	2
11	1585952	Bracket (Gas Spring Mount).....	2
12	1563369	Ball Stud.....	4
13	329069	Nut.....	2
14	1582018	Plate.....	1
15	1530244	Insert.....	4
16	296032	Capscrew.....	4
17	1527878	Capscrew.....	4
18	1527876	Capscrew.....	2
19	1580794	Striker Bolt.....	1
20	1530243	Insert.....	2
21	1527881	Capscrew.....	2
22	1534417	Capscrew.....	6
23	1585581	Bumper (Hood).....	2
24	1580293	Plate.....	1
25	1582286	Latch Rotor.....	1
26	1582287	Handle.....	1
27	302010	Screw.....	4
28	320152	Washer.....	4
29	1527228	Bracket (Hood Switch).....	2
30	1583611	Capscrew.....	2
31	1531557	Insert.....	2
32	1585765	Plate.....	1
33	1565545	Magnet.....	1
	1347045	Fastener (Not Illustrated).....	8
	1561015	Grommet (Not Illustrated).....	1

FLOORPLATES AND COVERS (Figure 1-2)



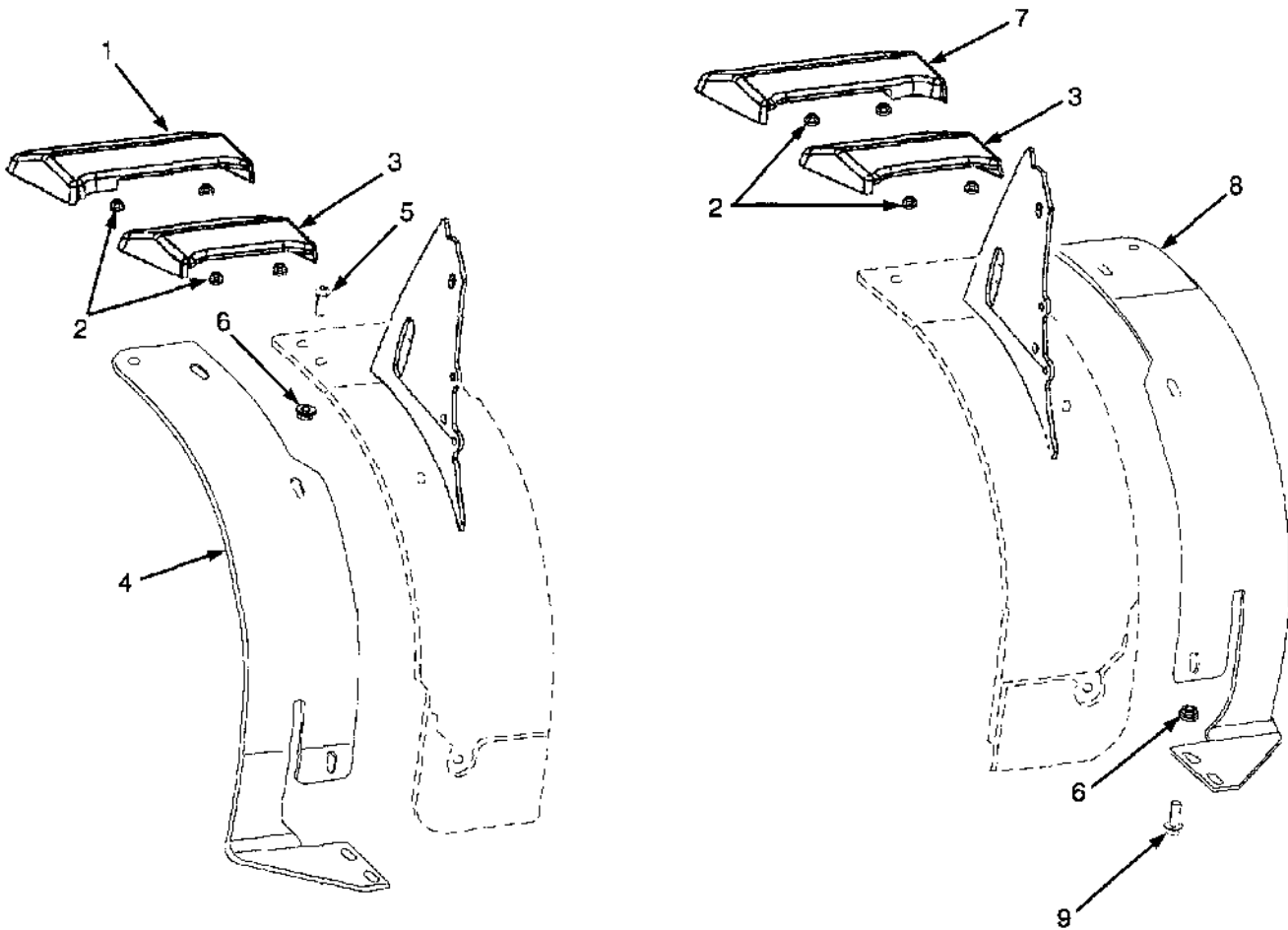
BP120095

FLOORPLATES AND COVERS

ITEM	PART NO.	DESCRIPTION	QTY
1	2056823	Bracket (Tail Light) (RH)	1
2	1586495	Capscrew.....	4
3	2067455	Cover (Rear) (Crossmember)	1
4	1540643	Capscrew.....	3
5	1531001	Insert.....	8
6	2056822	Bracket (Tail Light) (LH)	1
7	2065666	Cover (Steering Column) (Lower)	1
8	2065668	Cover (Steering Column) (Upper)	1
9	2027655	Screw.....	2
10	2071261	Capscrew.....	5
11	2065667	Clip	2
12	1517418	Dash Assembly (Electronic Hydraulics)	1
12	2065885	Dash.....	1
12	2070975	Cup Holder	1
12	1517419	Dash Assembly (Manual Valve)	1
12	2065886	Dash.....	1
12	2070975	Cup Holder	1
13	2065667	Clip	4
14	2071593	Panel (Kick) (Single Pedal)	1
14	2071594	Panel (Kick) (Dual Pedal)	1
15	1530135	Grommet (RH) (Foam).....	1
16	1581569	Seal	1
17	a 1527939	Panel (Rear) (LH)	1
17	b 1527940	Panel (Rear) (LH)	1
18	1583611	Capscrew.....	2
19	1530019	Screw.....	8
20	1564026	Cover (Fender) (LH).....	1
21	1514429	Nut (Flange).....	4
22	1350215	Nut (Foldover)	4
23	1540859	Panel (Front) (LH)	1
24	1574271	Panel (Step) (LH).....	1
25	1519787	Plate (Tread) (LH).....	1
26	1564396	Seal Plate Assembly	1
26	1529426	Seal	1
27	1564028	Cover (Fender) (RH)	1
28	2072213	Floormat	1
29	1519788	Plate (Tread) (RH).....	1
30	1540869	Panel (Front) (RH)	1
31	1574273	Panel (Step) (RH)	1
32	1527946	Rear Panel (RH)	1
33	1564529	Seal	2
34	1509754	Floor Plate	1
35	1530019	Screw.....	2
36	1531558	Insert.....	6
37	1547460	Cover (Radiator)	1
37	1547467	Seal (LH)	1
37	1547468	Seal (RH).....	1

FOOTNOTES:**a** Diesel**b** LPG

FENDER EXTENSIONS AND MUD GUARDS (Figure 1-3) WITH WIDE TREAD

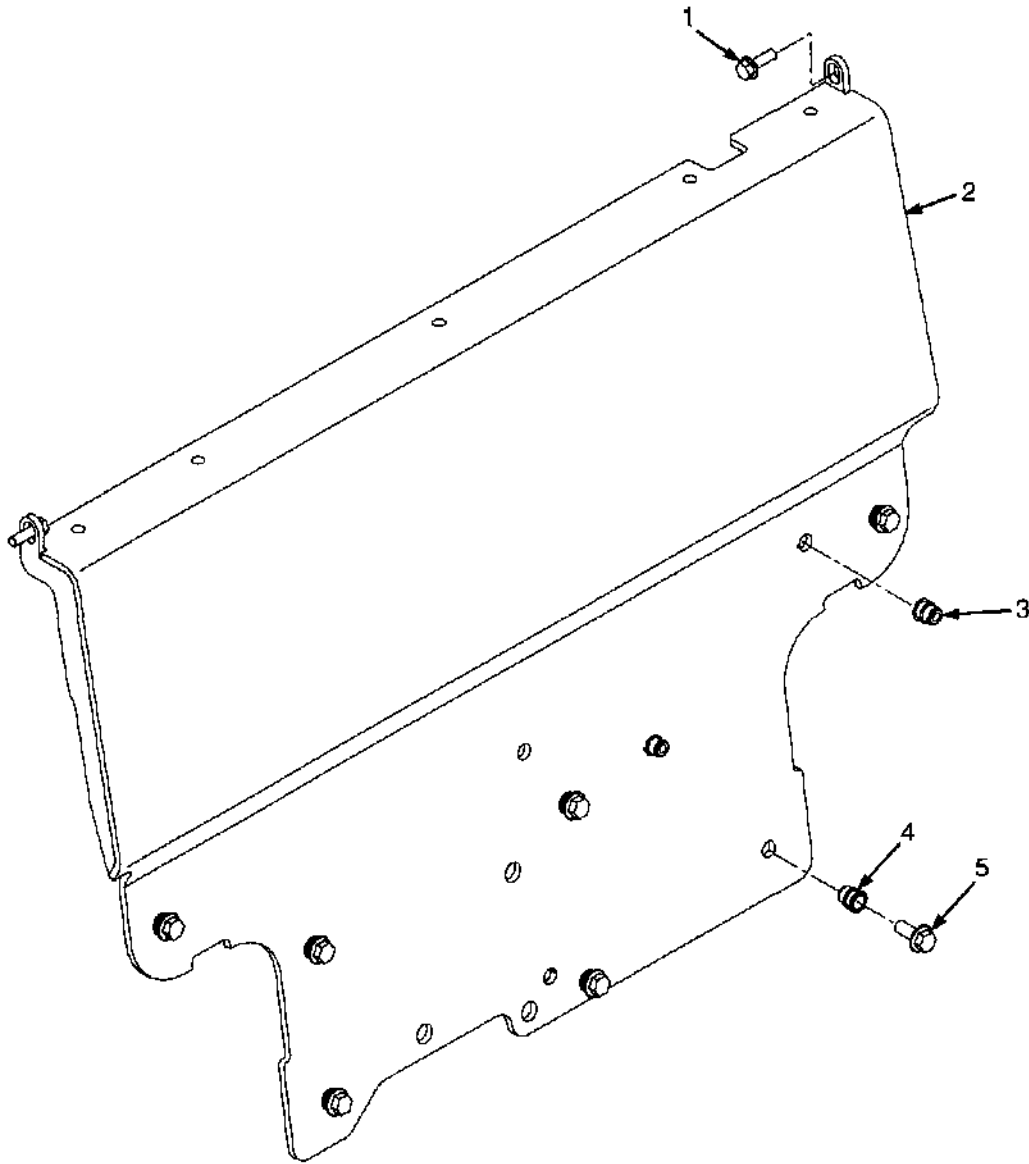


BP120086

**FENDER EXTENSIONS AND MUD GUARDS
WITH WIDE TREAD**

ITEM	PART NO.	DESCRIPTION	QTY
1	2069545	Mud Guard (Wide, RH).....	1
2	1544153	Lock Nut.....	4
3	2069008	Mud Guard (Standard).....	2
4	1555786	Fender (Extension, RH).....	1
5	2072664	Capscrew.....	4
6	1586432	Nut.....	10
7	2069544	Mud Guard (Wide, LH).....	1
8	1555755	Fender (Extension, LH).....	1
9	1586630	Capscrew.....	6

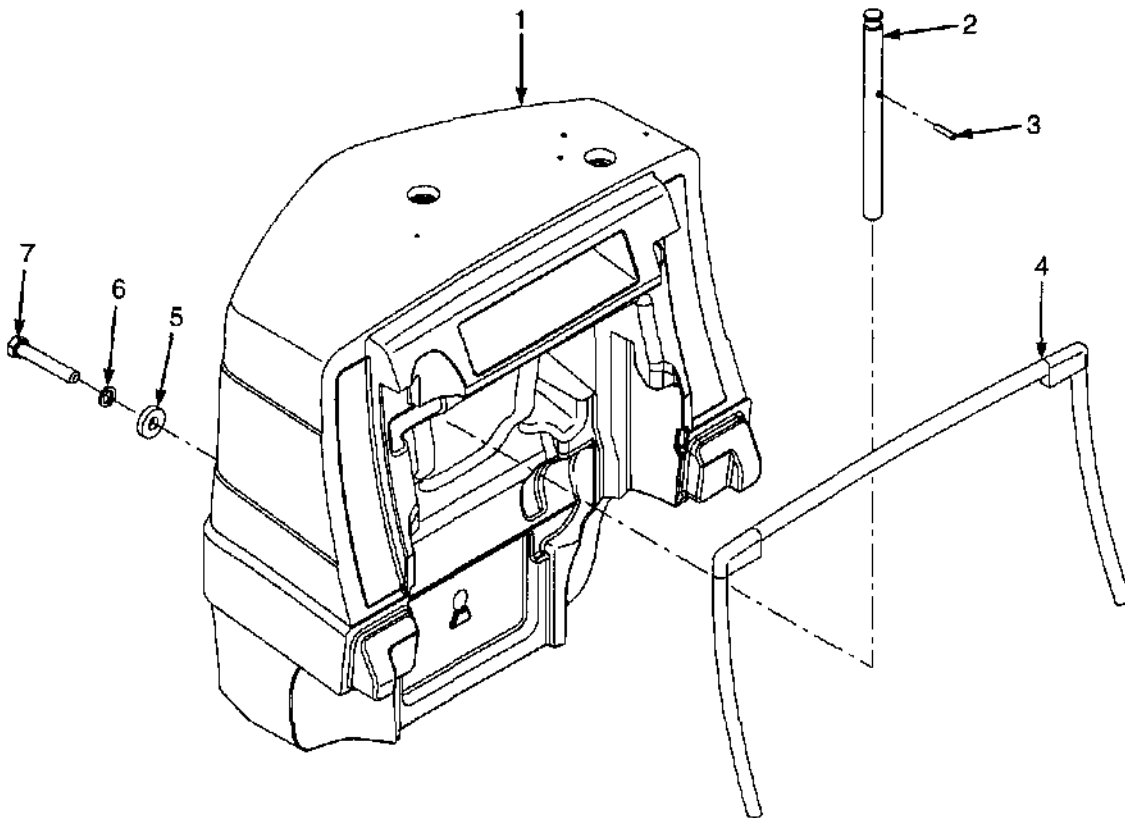
COWL MOUNTING (Figure 1-4)



HP120730

ITEM	PART NO.	DESCRIPTION	QTY
1	1583611	Capscrew	2
2	1566545	Cowl	1
3	1530243	Insert	2
4	1530244	Insert	7
5	1605990	Capscrew	7

COUNTERWEIGHT (Figure 1-5)

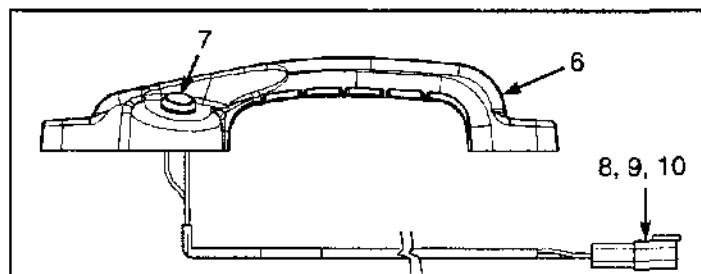
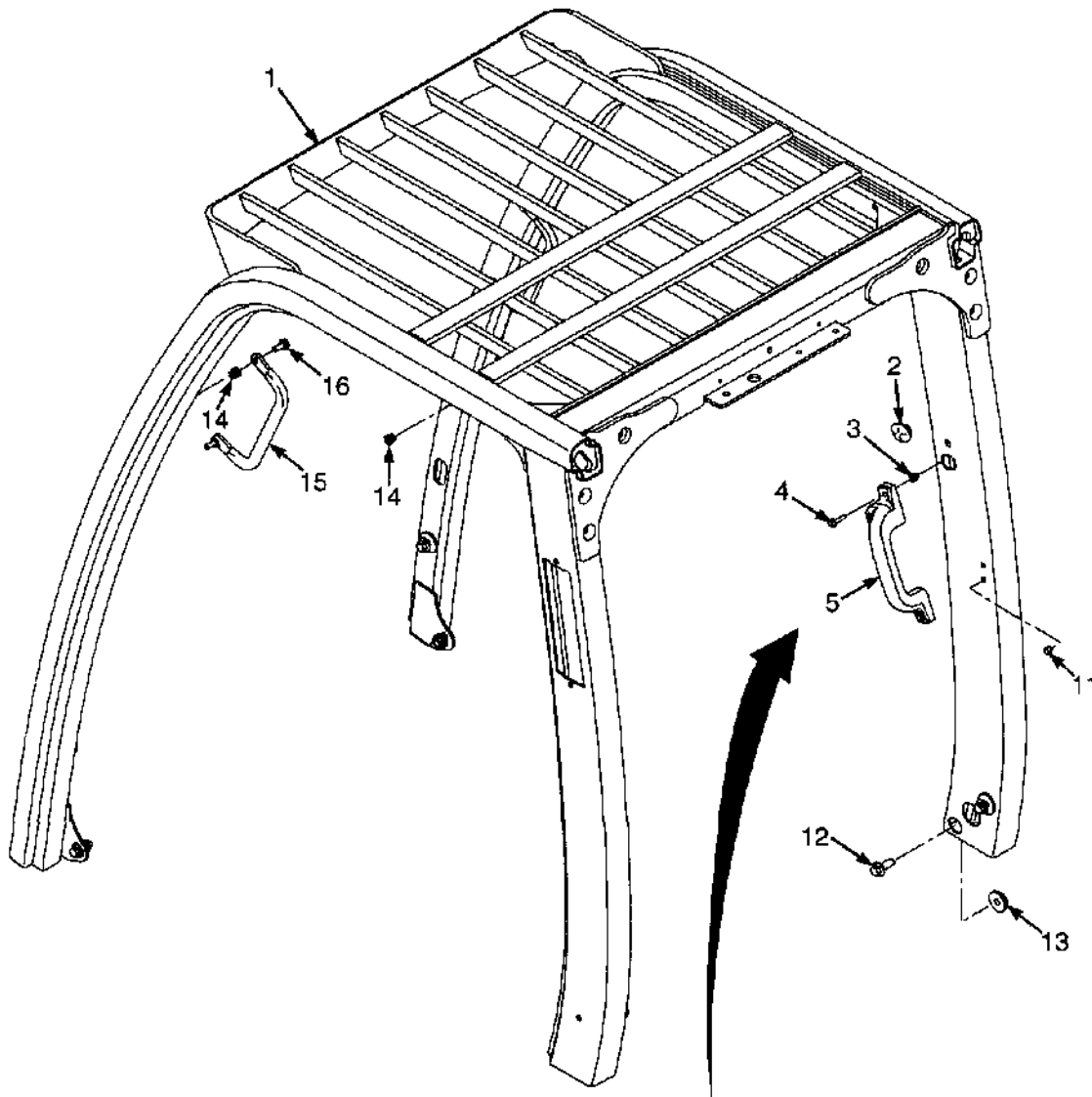


HP120727

COUNTERWEIGHT

ITEM	PART NO.	DESCRIPTION	QTY
1	1528754	Counterweight (H1.6FT)	1
1	1528755	Counterweight (H1.8FT)	1
1	1548756	Counterweight (H2.0FTS).....	1
2	1521190	Tow Pin	1
3	302491	Pin	1
4	1565084	Seal	1
5	1375214	Washer	1
6	292689	Lockwasher.....	1
7	292608	Capscrew (101,6 mm)	1

OVERHEAD GUARD (Figure 1-6)

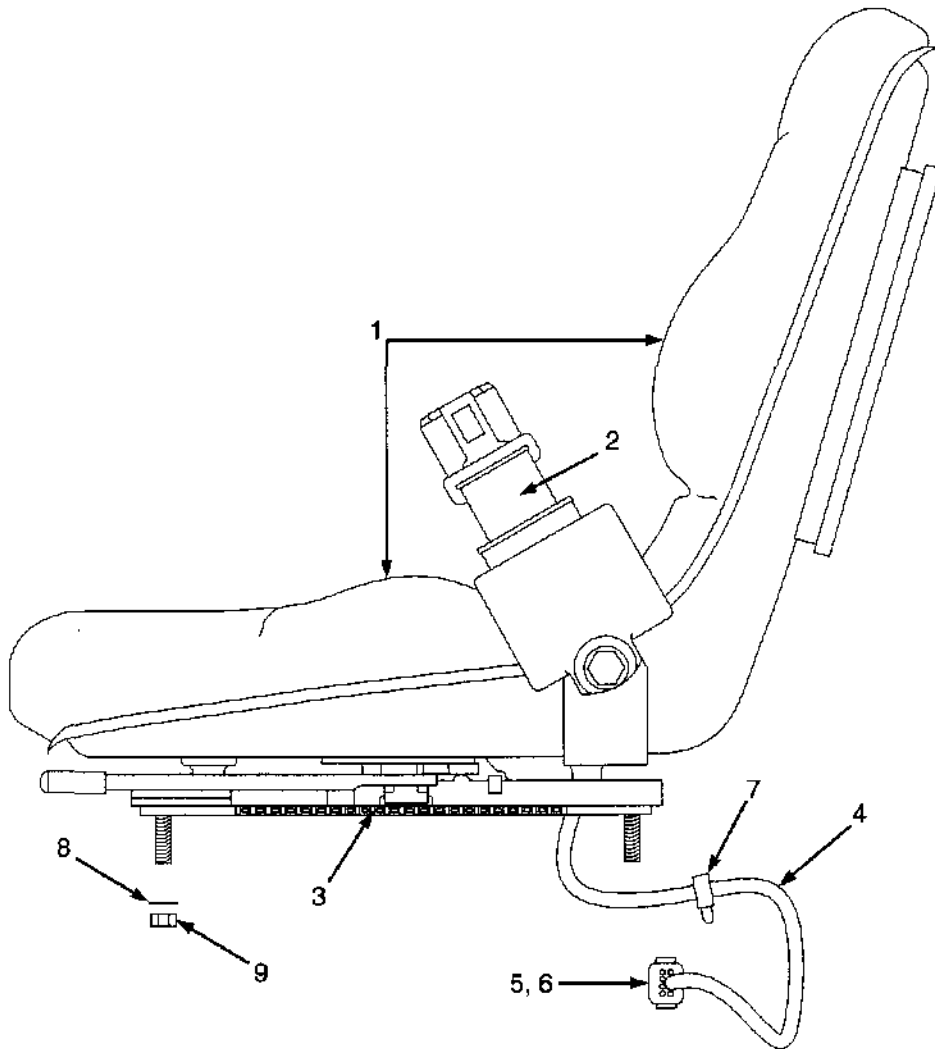


HP120732

OVERHEAD GUARD

ITEM	PART NO.	DESCRIPTION	QTY
1	1599203	Overhead Guard (High)	1
1	1599209	Overhead Guard (Low)	1
2	1558219	Grommet.....	3
3	1531558	Insert.....	2
4	1586495	Capscrew.....	2
5	2070223	Handle Assembly (Optional).....	1
6	2069454	Handle.....	1
7	1566726	Switch (Horn)	1
8	1493465	Connector.....	1
9	1330414	Secondary Lock.....	1
10	1330437	Terminal (Pin).....	2
11	1494888	Plug	2
12	1528889	Capscrew.....	8
13	1528888	Nut.....	2
14	1531557	Insert.....	4
15	1536813	Handle (Grab).....	1
16	1510113	Capscrew.....	2

NON SUSPENSION SEAT (Figure 1-7) WITHOUT ELECTRONIC CONTROLS



HP120851

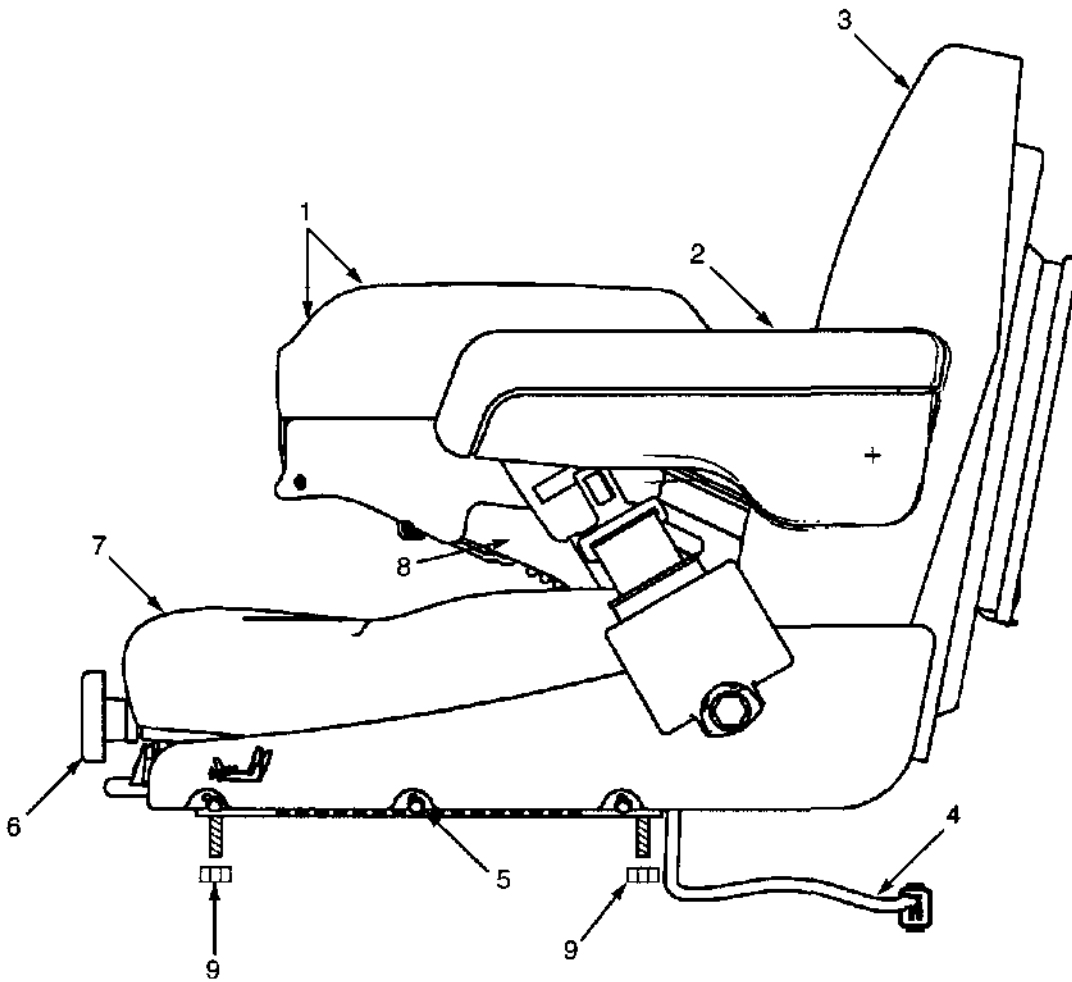
**NON SUSPENSION SEAT
WITHOUT ELECTRONIC CONTROLS**

ITEM	PART NO.	DESCRIPTION	QTY
	1593409	Non-Suspension Seat (Vinyl).....	1
1	1563351	Cushions (Vinyl)	1
2	1598504	Seat Belt Kit.....	1
3	1459173	Slide Kit.....	1
4	1591652	Harness Kit.....	1
4	2075429	Wire Harness	1
4	2070392	Pigtail	1
5	1500912	Clip	1
6	1582464	Fastener	1
7	1500901	Clip	1
8	320158	Washer	4
9	145639	Nut.....	4
	a 1563215	Sensor (Operator Presence).....	1

FOOTNOTES:

a Not Illustrated

SEMI SUSPENSION SEAT (Figure 1-8) WITH AND WITHOUT ELECTRONIC CONTROLS



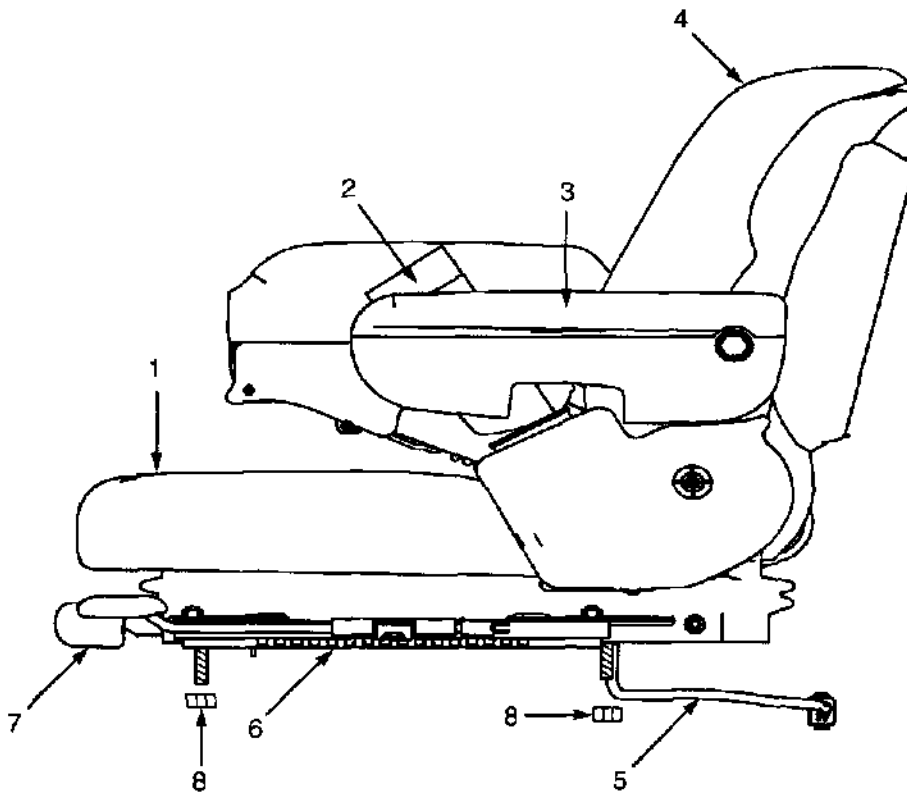
BP120109

**SEMI SUSPENSION SEAT
WITH AND WITHOUT ELECTRONIC CONTROLS****KEY:****A: Without Arm Controls****B: With Arm Controls**

ITEM	PART NO.	DESCRIPTION	QTY	
			A	B
	1593411	Seat Assembly (Vinyl).....	1	..
	1593412	Seat Assembly (Cloth).....	1	..
	1593415	Seat Assembly (Vinyl).....	..	1
	1593416	Seat Assembly (Cloth).....	..	1
1	1453882	Armrest.....	1	..
1	1453883	Armrest.....	1	..
2	1563210	Foam Cap (Electronic Control Arm).....	..	1
2	1563211	Knobs (Electronic Control Arm).....	..	1
3	1382111	Back Cushion (Vinyl).....	1	1
3	1382113	Back Cushion (Cloth).....	1	1
4	2075429	Wire Harness.....	1	..
4	2075428	Wire Harness.....	..	1
5	1459173	Slide Kit.....	1	..
5	1563895	Slide Kit.....	..	1
6	1563227	Weight Adjust Knob.....	1	1
7	1382112	Seat Cushion (Vinyl).....	1	1
7	1382114	Seat Cushion (Cloth).....	1	1
8	1598504	Seat Belt Kit.....	1	1
9	191941	Nut.....	4	4
	a 1362049	Shock Absorber Kit.....	1	1
	a 1563215	Sensor (Operator Presence).....	1	1

FOOTNOTES:**a** Not Illustrated

FULL SUSPENSION SEAT (Figure 1-9) WITH AND WITHOUT ELECTRONIC CONTROLS



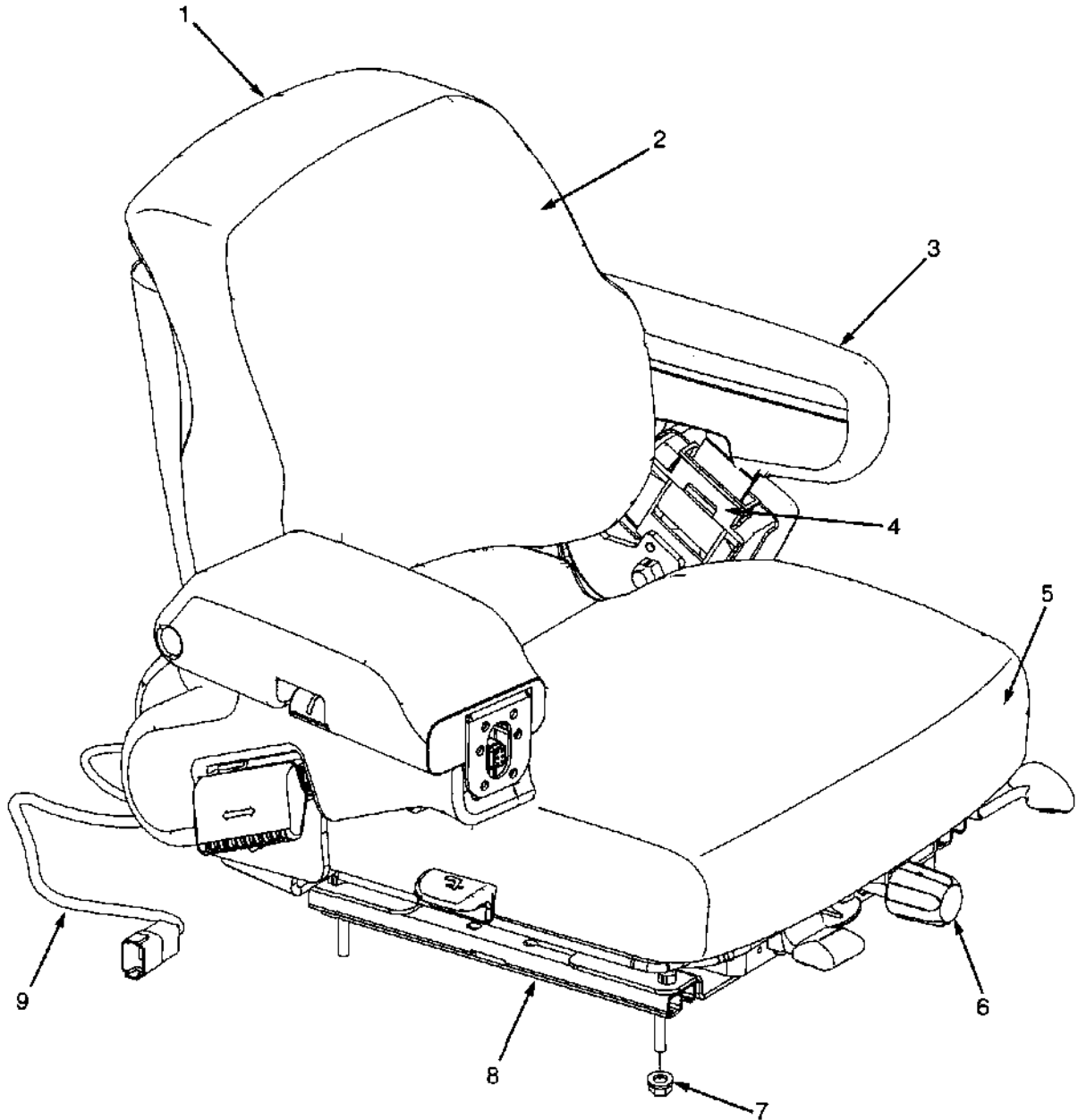
BP120111

**FULL SUSPENSION SEAT
WITH AND WITHOUT ELECTRONIC CONTROLS****KEY:****A: Full Suspension (Vinyl)****B: Full Suspension (Cloth)****C: Full Suspension (Vinyl with Electronic Control Arm)****D: Full Suspension (Cloth with Electronic Control Arm)**

ITEM	PART NO.	DESCRIPTION	QTY			
			A	B	C	D
	1593413	Full Suspension Seat (Vinyl).....	1
	1593414	Full Suspension Seat (Cloth).....	..	1
	1593417	Full Suspension Seat (Vinyl).....	1	..
	1593418	Full Suspension Seat (Cloth).....	1
1	1563207	Seat Cushion.....	1	..	1	..
1	1566453	Seat Cushion.....	..	1	..	1
2	1598504	Seat Belt Kit.....	1	1	1	1
3	1563230	Arm Cushion (LH).....	1	1	1	1
3	1563231	Arm Cushion (RH).....	1	1
4	1470152	Back Cushion (Vinyl).....	1	..	1	..
4	1470153	Back Cushion (Cloth).....	..	1	..	1
5	2075429	Wire Harness.....	1	1
5	2075428	Wire Harness.....	1	1
6	1470161	Slide Kit.....	1	1	1	1
7	1470163	Weight Adjuster Kit.....	1	1	1	1
8	191941	Nut.....	4	4	4	4
	a 1483828	Shock Kit.....	1	1	1	1
	a 1563210	Foam Cap (Electronic Control Arm).....	1	1
	a 1563211	Knobs (Electronic Control Arm).....	1	1
	a 1563208	Sensor.....	1	1	1	1

FOOTNOTES:**a** Not Illustrated

FULL SUSPENSION SWIVEL SEAT (Figure 1-10) WITH AND WITHOUT ELECTRONIC CONTROLS



BP120119

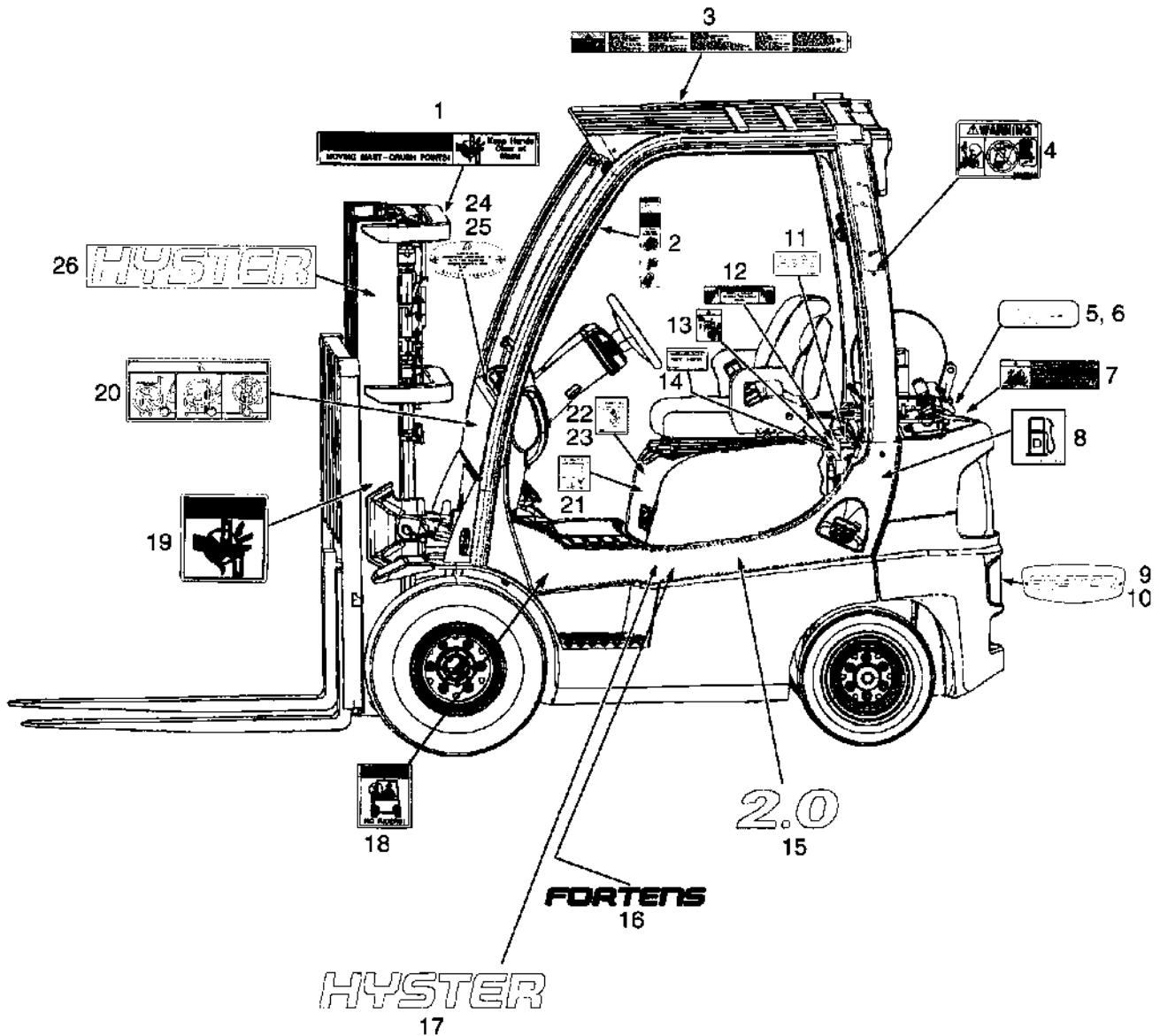
FULL SUSPENSION SWIVEL SEAT WITH AND WITHOUT ELECTRONIC CONTROLS

ITEM	PART NO.	DESCRIPTION	QTY
1	1593421	Seat Assembly (Vinyl) (With Armrests).....	1
1	1593422	Seat Assembly (Cloth) (With Armrests).....	1
1	1593423	Seat Assembly (Vinyl) (With Electronic Controls).....	1
1	1593424	Seat Assembly (Cloth) (With Electronic Controls).....	1
2	1470152	Back Cushion (Vinyl).....	1
2	1470153	Back Cushion (Cloth).....	1
3	1563230	Arm Cushion (LH).....	1
4	1598504	Seat Belt Kit.....	1
5	1563207	Seat Cushion (Vinyl).....	1
5	1566453	Seat Cushion (Cloth).....	1
6	1470163	Weight Adjuster Kit.....	1
7	191941	Nut.....	4
8	1470161	Slide Kit.....	1
9	2075429	Wire Harness (Without Electronic Controls).....	1
9	2075428	Wire Harness (With Electronic Controls).....	1
	a 1563211	Knobs (Electronic Control Arm).....	1
	a 1563210	Foam Cap (Electronic Control Arm).....	1
	a 1563231	Arm Cushion (RH) (Without Electronic Controls).....	1
	a 1483828	Shock Kit.....	1
	a 1563208	Sensor.....	1

FOOTNOTES:

a Not illustrated

LABELS (Figure 1-11) EXTERIOR



BP120116

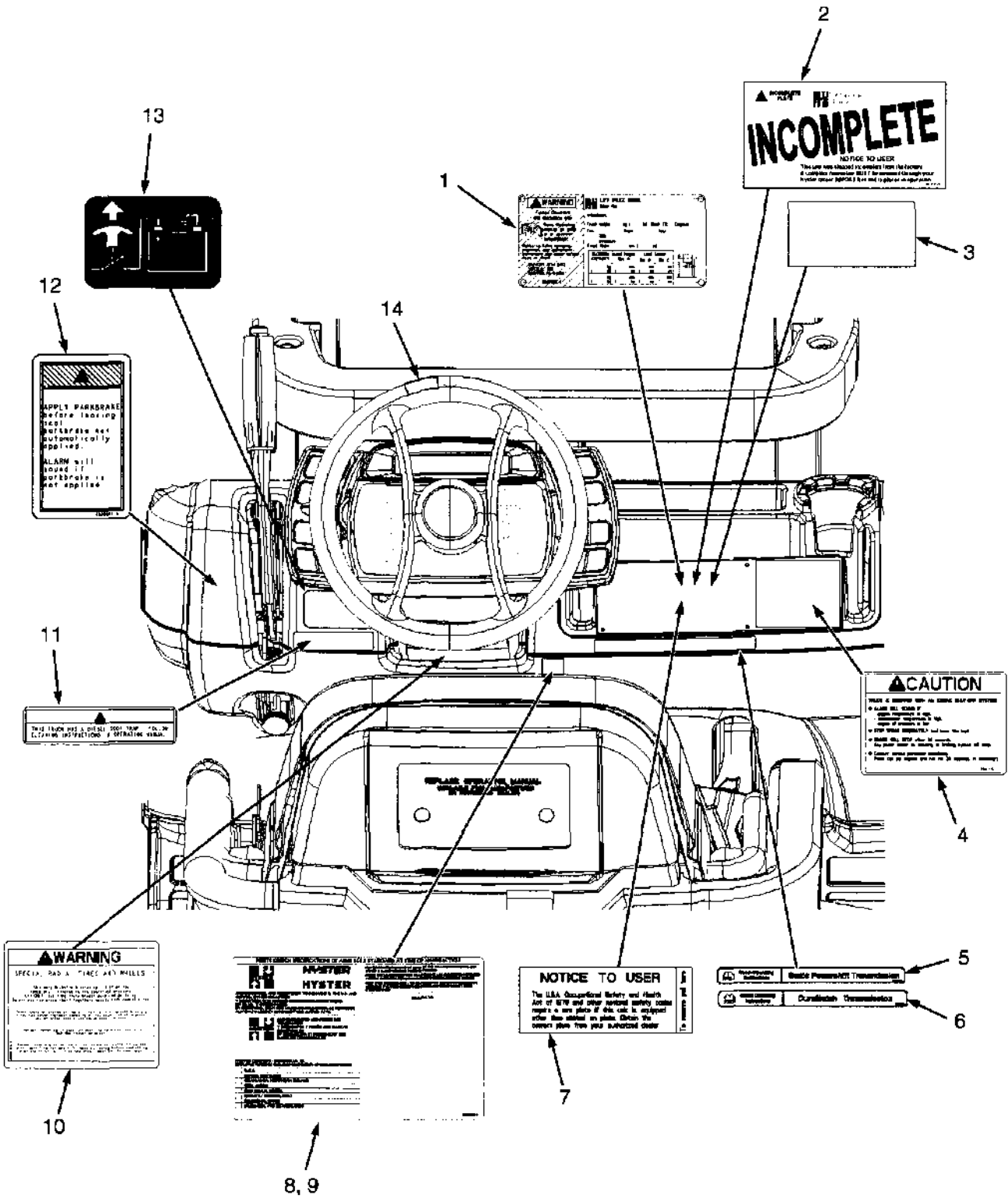
**LABELS
EXTERIOR**

ITEM	PART NO.	DESCRIPTION	QTY
1	1343276	Label (Mast Warning)	1
2	1359588	Label (Operator Restraint)	2
3	2073198	Label (Operator Warning)	1
4	b 2034460	Label (Ether Warning)	1
5	1501258	Nameplate (LP Tank)	1
6	170658	Rivet	4
7	1354172	Label (Flammable LPG)	1
8	2074256	Label (Diesel Fuel Only)	1
9	1566953	Plate (Hyster Logo)	1
10	1566951	Fastener	2
11	1375676	Label (Boron Free Anti-Freeze Only)	1
12	1345926	Label (Fan Warning)	1
13	1300094	Label (Fan Warning)	2
14	1354165	Label (Anti-Freeze)	2
15	1598331	Label (Model 1.6)	2
15	1598330	Label (Model 1.8)	2
15	1598305	Label (Model 2.0)	2
16	1601748	Label (Fortens)	2
17	1586440	Label (Hyster)	2
18	1339828	Label (No Riders)	2
19	1339832	Label (Pinch Point)	2
20	2075655	Label (Mast Warning)	2
21	2075417	Label (Locking Gas Spring)	1
22	2074740	Label (Joystick Caution)	1
23	c 2075614	Label (Hood Opening Warning)	1
23	1588085	Label (Swivel Seat)	1
24	a	Inspection Plate	1
25	170658	Rivet	2
26	1562353	Label (Hyster)	2

FOOTNOTES:

- a** Contact Your Local Hyster Dealer
b Diesel Only
c LPG Only

LABELS (Figure 1-12) INTERIOR



BP110028

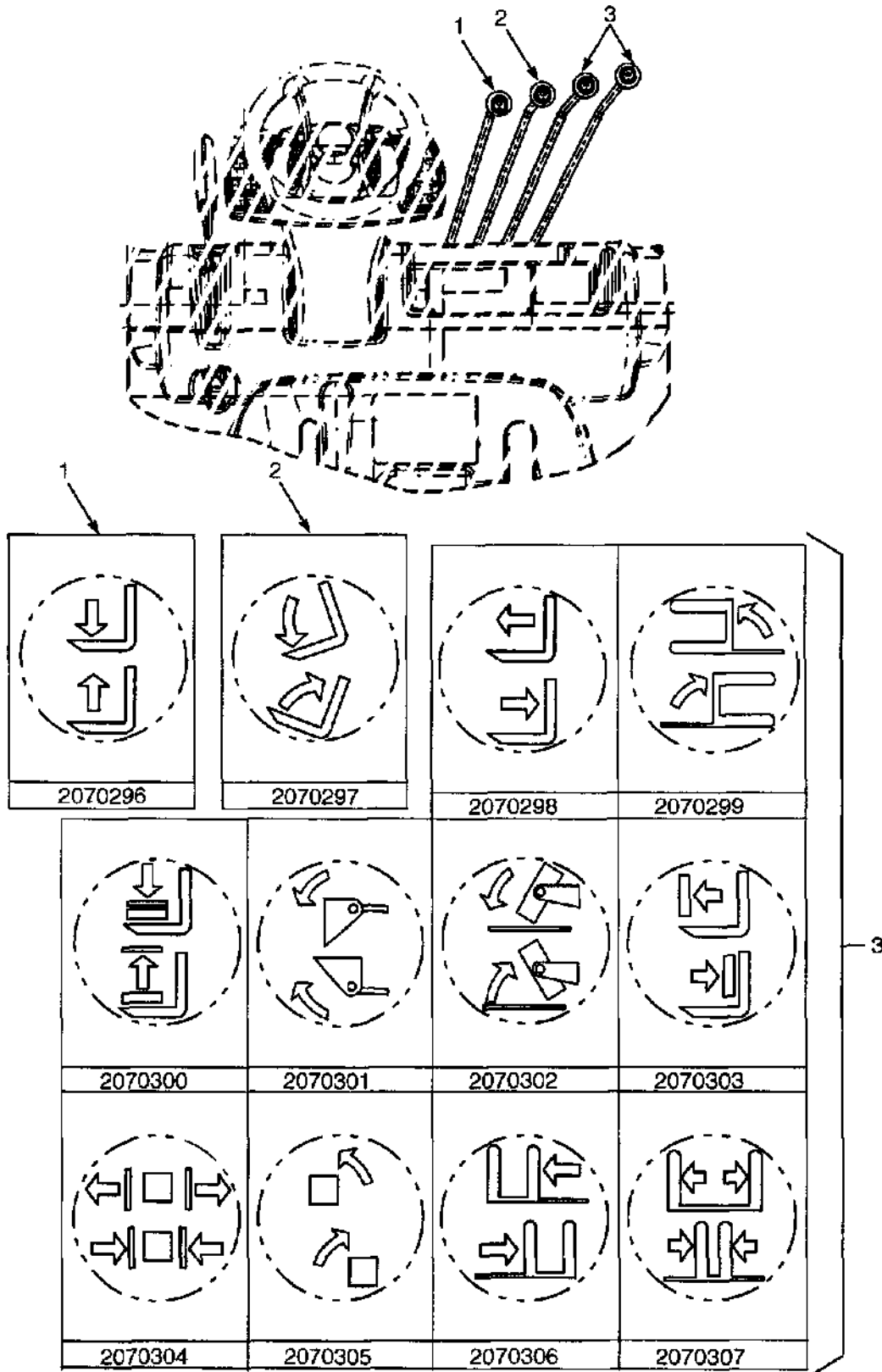
**LABELS
INTERIOR**

ITEM	PART NO.	DESCRIPTION	QTY
1	a	Nameplate	1
2	1574147	Label (Incomplete Truck Nameplate)	1
3	389688	Cover	1
4	2038100	Label (Drive Train Protection)	1
5	1589377	Label (Basic Powershift Transmission)	1
6	1589397	Label (DuraMatch Transmission)	1
7	1335138	Nameplate Tag	1
8	1534660	Label (Patents and Trademarks)	1
9	170658	Rivet	4
10	1374775	Label (Radial Tire Warning)	1
11	1365830	Label (Caution Soot Trap)	1
12	2074210	Label (Park Brake Warning)	1
13	1324480	Label (Battery Switch)	1
14	1365843	Label (Diesel Caution Soot Trap)	1

FOOTNOTES:

a Contact Your Local Hyster Dealer

CONTROL LEVER LABELS (Figure 1-13)

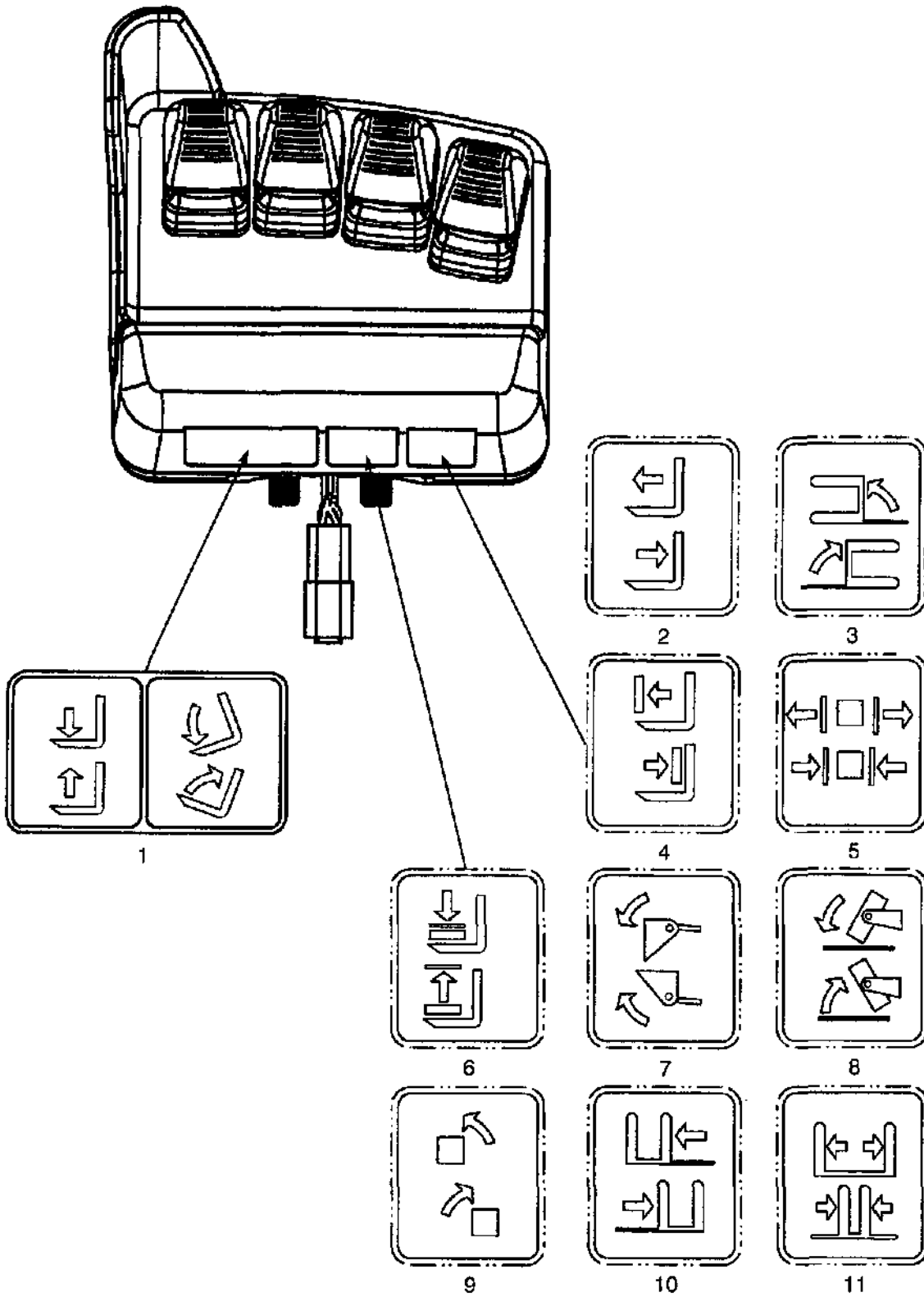


HP120820

CONTROL LEVER LABELS

ITEM	PART NO.	DESCRIPTION	QTY
1	2070296	Lens (Lift).....	1
2	2070297	Lens (Tilt).....	1
3	2070298	Lens (Reach).....	1
3	2070299	Lens (Swing).....	1
3	2070300	Lens (Load Stabilizer).....	1
3	2070301	Lens (Scoop).....	1
3	2070302	Lens (Uprinder).....	1
3	2070303	Lens (Push/Pull).....	1
3	2070304	Lens (Clamp).....	1
3	2070305	Lens (Rotate).....	1
3	2070306	Lens (Side-Shift).....	1
3	2070307	Lens (Fork Spread).....	1

ELECTRONIC LEVER LABELS (Figure 1-14)

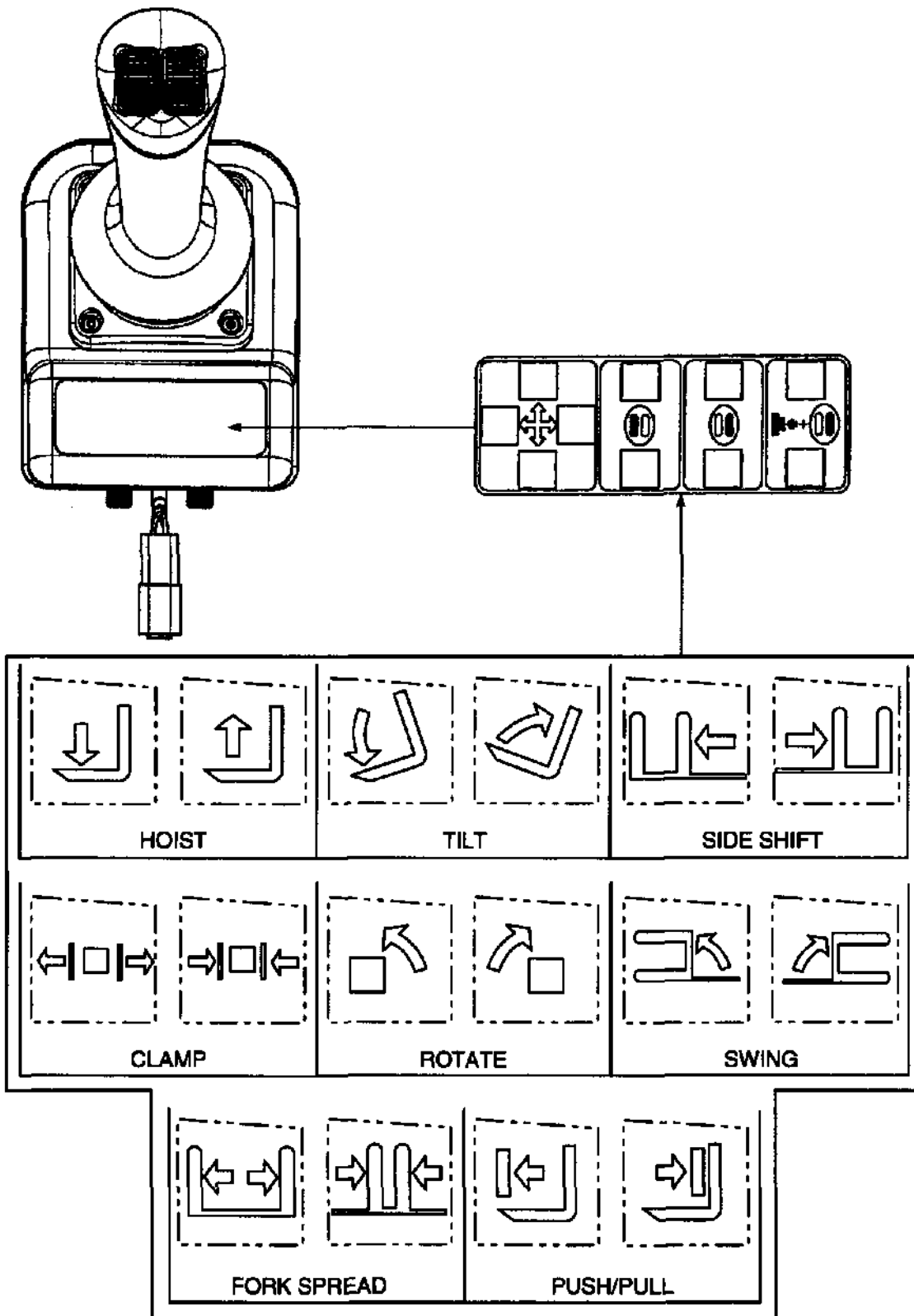


YP120186

ELECTRONIC LEVER LABELS

ITEM	PART NO.	DESCRIPTION	QTY
1	1581055	Label (Hoist and Tilt)	1
2	2073115	Label (Reach)	1
3	2073114	Label (Swing).....	1
4	2073116	Label (Load Stabilizer).....	1
5	2073117	Label (Scoop)	1
6	2073119	Label (Upender).....	1
7	2073118	Label (Push/Pull)	1
8	2073120	Label (Clamp).....	1
9	2073121	Label (Rotate).....	1
10	2073122	Label (Side-Shift).....	1
11	2073123	Label (Fork Spread).....	1

JOYSTICK LABELS (Figure 1-15)

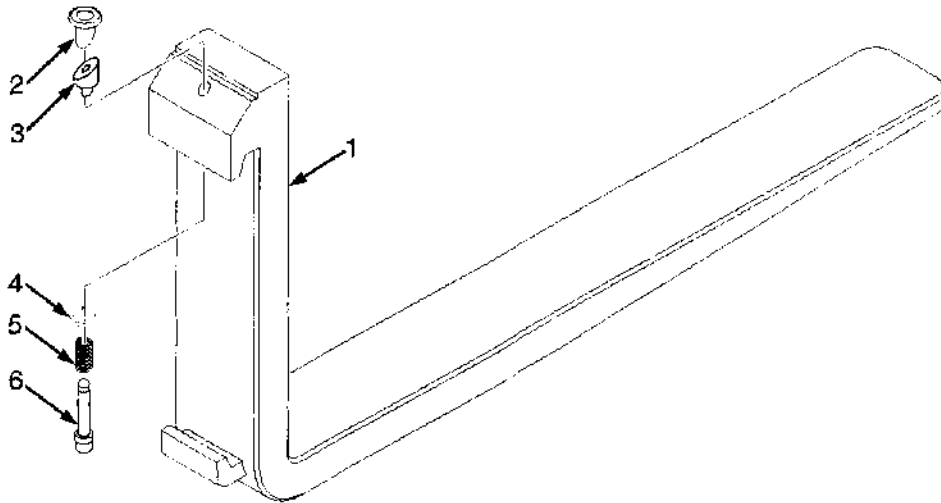


YP120187

JOYSTICK LABELS

ITEM	PART NO.	DESCRIPTION	QTY
	2070481	Label Set (Hoist and Tilt)	1
	2070482	Label Set (Hoist and Tilt, Side-Shift)	1
	2070483	Label Set (Hoist and Tilt, Side-Shift, Fork Spread).....	1
	2070484	Label Set (Hoist and Tilt, Side-Shift, Push/Pull)	1
	2070486	Label Set (Hoist and Tilt, Clamp).....	1
	2070487	Label Set (Hoist and Tilt, Side-Shift, Clamp)	1
	2070488	Label Set (Hoist and Tilt, Side-Shift, Rotate).....	1
	2070489	Label Set (Hoist and Tilt, Side-Shift, Rotate, Clamp).....	1
	2070491	Label Set (Hoist and Tilt, Rotate, Clamp)	1
	2070495	Label Set (Hoist and Tilt, Swing, Clamp).....	1
	2070496	Label Set (Hoist and Tilt, Swing, Rotate, Clamp)	1

FORKS (Figure 1-16)



HP120734

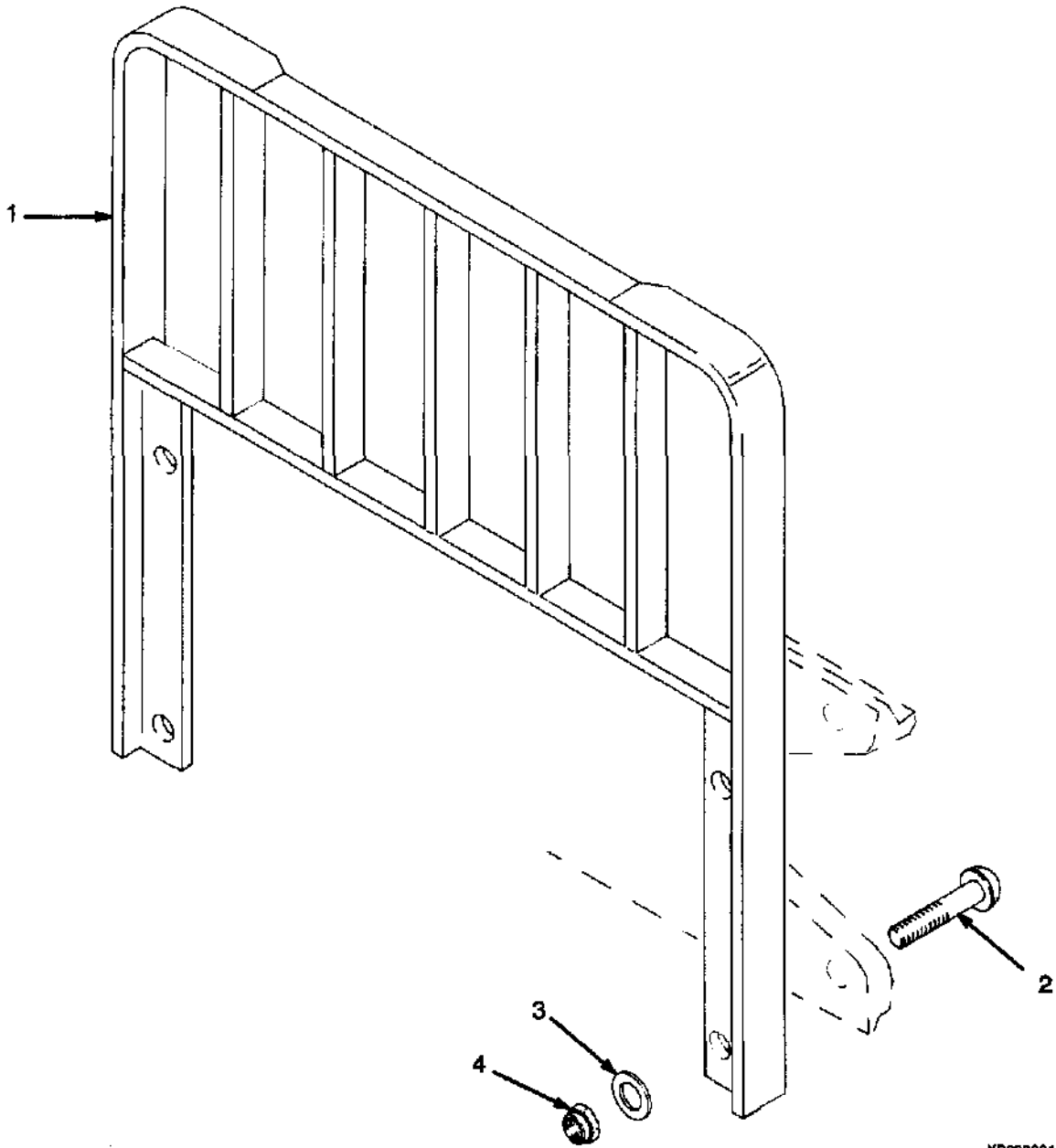
KEY:

A: 80 mm x 40 mm (4 in. x 1.5 in.) Standard Taper

B: 100 mm x 40 mm (4 in. x 1.5 in.) Full Bottom Taper

ITEM	PART NO.	DESCRIPTION	QTY	
			A	B
1	1327021	Fork (991 mm)	2	..
1	1327022	Fork (1092 mm)	2	..
1	1327023	Fork (1194 mm)	2	..
1	1333043	Fork (1000 mm)	2
1	1333044	Fork (1100 mm)	2
1	1333045	Fork (1200 mm)	2
2	1523732	Knob	1	1
3	1477237	Wedge	1	1
4	1477166	Washer	1	1
5	1500782	Spring	1	1
6	1523733	Pin	1	1
7	1523734	Retainer Pin	1	1
	1523735	Latch Kit (Class II) (Includes Items 2-7)	2	2

LOAD BACKREST EXTENSION (Figure 1-17)



YP290001

LOAD BACKREST EXTENSION

ITEM	PART NO.	DESCRIPTION	QTY
1	1349446	Load Backrest Extension (977 mm).....	1
2	1343990	Capscrew.....	4
3	221771	Washer.....	4
3	296423	Washer (Optional).....	4
4	300937	Locknut.....	4