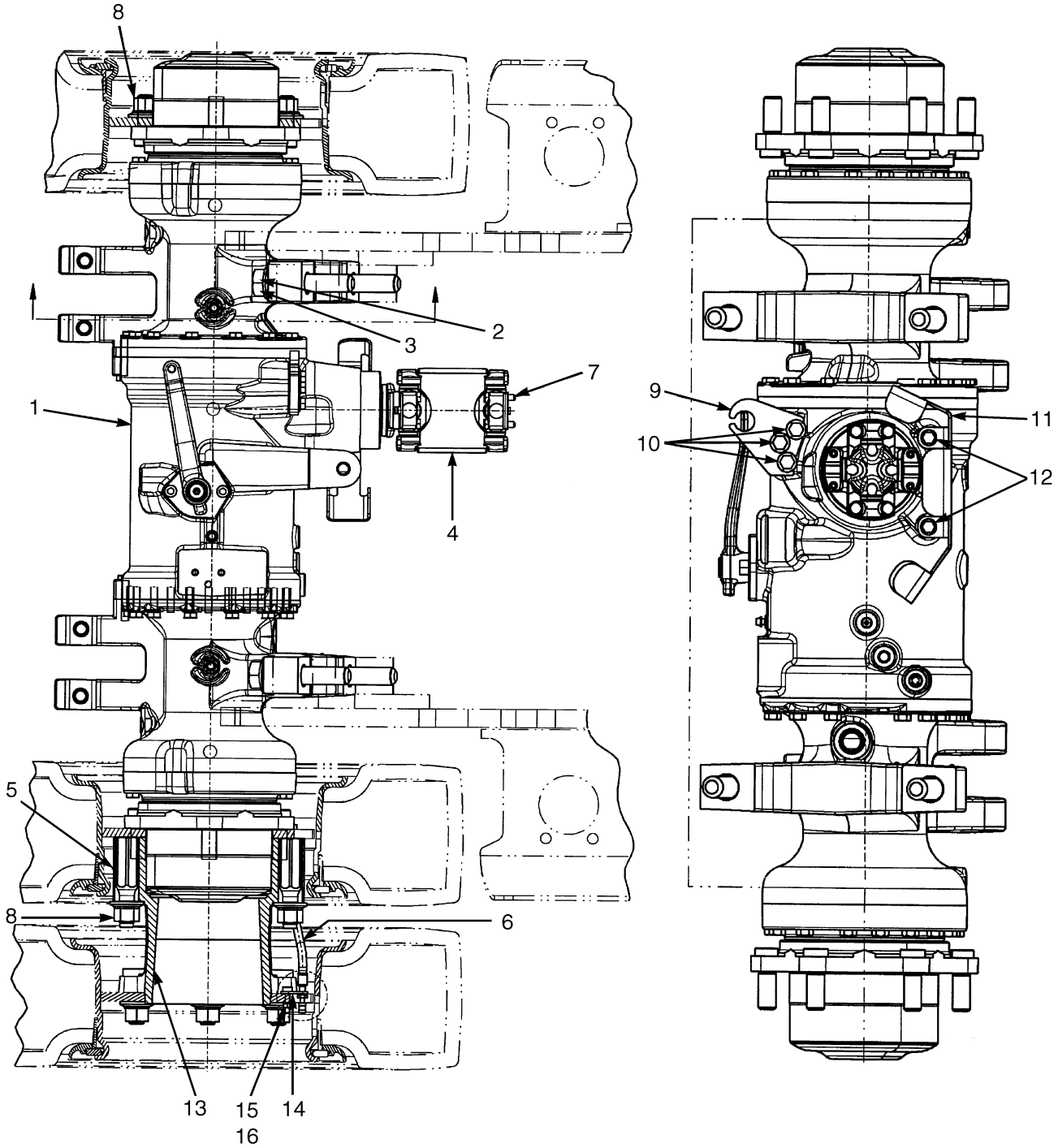


DRIVE AXLE AND ATTACHING PARTS (Figure 6-1) WET BRAKE

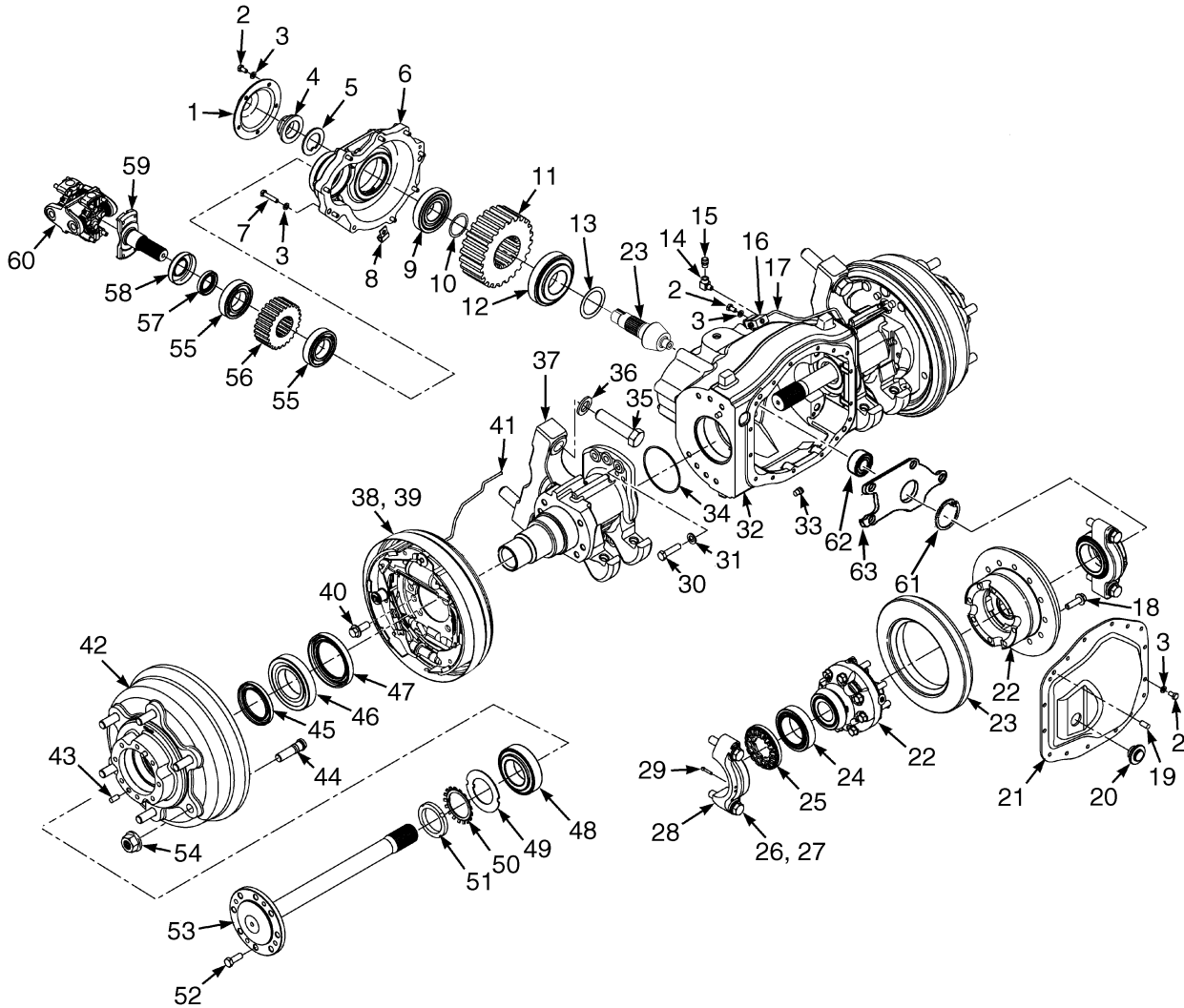


HP070110

**DRIVE AXLE AND ATTACHING PARTS
WET BRAKE****KEY:****A: Single Wheel****B: Dual Wheel**

ITEM	PART NO.	DESCRIPTION	QTY	
			A	B
1	1539245	Drive Axle (14.52 Overall Ratio)	1	1
1	1539246	Drive Axle (17.82 Overall Ratio)	1	1
1	2070734	Drive Axle (12.79 Overall Ratio)	1	1
2	296434	Washer	4	4
3	226430	Capscrew	4	4
4	1551649	U-Joint	1	1
4	1569273	Yoke	1	1
4	1569274	Spider and Bearing	2	2
5	1545401	Stud	12
6	1583169	Valve Stem Extension	2
7	293616	Capscrew	8	8
8	1537133	Wheel Nut	6	12
9	1580213	Plate	1	1
10	1527884	Capscrew	3	3
11	1585528	Bracket	1	1
12	1527879	Capscrew	2	2
13	1552290	Hub Assembly	2
13	1545402	Hub	1
13	1532337	Bolt	6
14	1584690	Bracket	2
15	136687	Nut	2
16	292680	Lockwasher	2

DRIVE AXLE ASSEMBLY (Figure 6-2) DRY BRAKE



HP070111

**DRIVE AXLE ASSEMBLY
DRY BRAKE**

ITEM	PART NO.	DESCRIPTION	QTY
	1532729	Drive Axle (2.17 Gear Ratio).....	1
	1532730	Drive Axle (2.48 Gear Ratio).....	1
1	1516536	Cover (Pinion)	1
2	287851	Capscrew	20
3	292681	Lockwasher	29
4	2026861	Nut.....	1
5	1530588	Washer	1
6	1516535	Housing (Drop Box).....	1
7	292508	Capscrew	9
8	2075120	Clamp	1
9	2022352	Roller Bearing	1
10	1516335	Shim (0.50 mm).....	AR
10	1516331	Shim (0.12 mm).....	AR
10	1516332	Shim (0.15 mm).....	AR
10	1516333	Shim (0.18 mm).....	AR
10	1516334	Shim (0.25 mm).....	AR
11	1517576	Gear (2.17 Gear Ratio).....	1
11	1516526	Gear (2.48 Gear Ratio).....	1
12	2028862	Roller Bearing	1
13	1520755	Shim (0.01 in.).....	AR
13	1569912	Shim (0.002 in.).....	AR
13	1569913	Shim (0.0025 in.).....	AR
13	1520752	Shim (0.003 in.).....	AR
13	1569914	Shim (0.0035 in.).....	AR
13	1520753	Shim (0.004 in.).....	AR
13	1569915	Shim (0.0045 in.).....	AR
13	1520754	Shim (0.005 in.).....	AR
14	16151	Fitting.....	1
15	21420	Breather.....	1
16	1591122	Manifold Assembly	1
16	1532350	Formed Bracket.....	1
16	1588050	Manifold.....	1
16	1510126	Capscrew (Button Head).....	2
16	292680	Lockwasher.....	2
17	2063265	Brake Line (LH)	1
18	1565327	Bolt	8
19	302385	Pin	5
20	1516075	Plug	1
21	1532735	Cover (Center).....	1
22	2067962	Differential	1
23	1606532	Gear Set (Differential)	1
23	Pinion (Differential).....	4
23	Side Gear (Differential)	2
23	1565324	Washer Kit.....	1
24	1375488	Roller Bearing	2
25	a	Bearing Cap	2
26	a 293692	Capscrew	4
27	a 296426	Washer (Hardened).....	4
28	1532732	Housing (Center).....	1
29	15241	Cotter Pin	2
30	293686	Capscrew	14

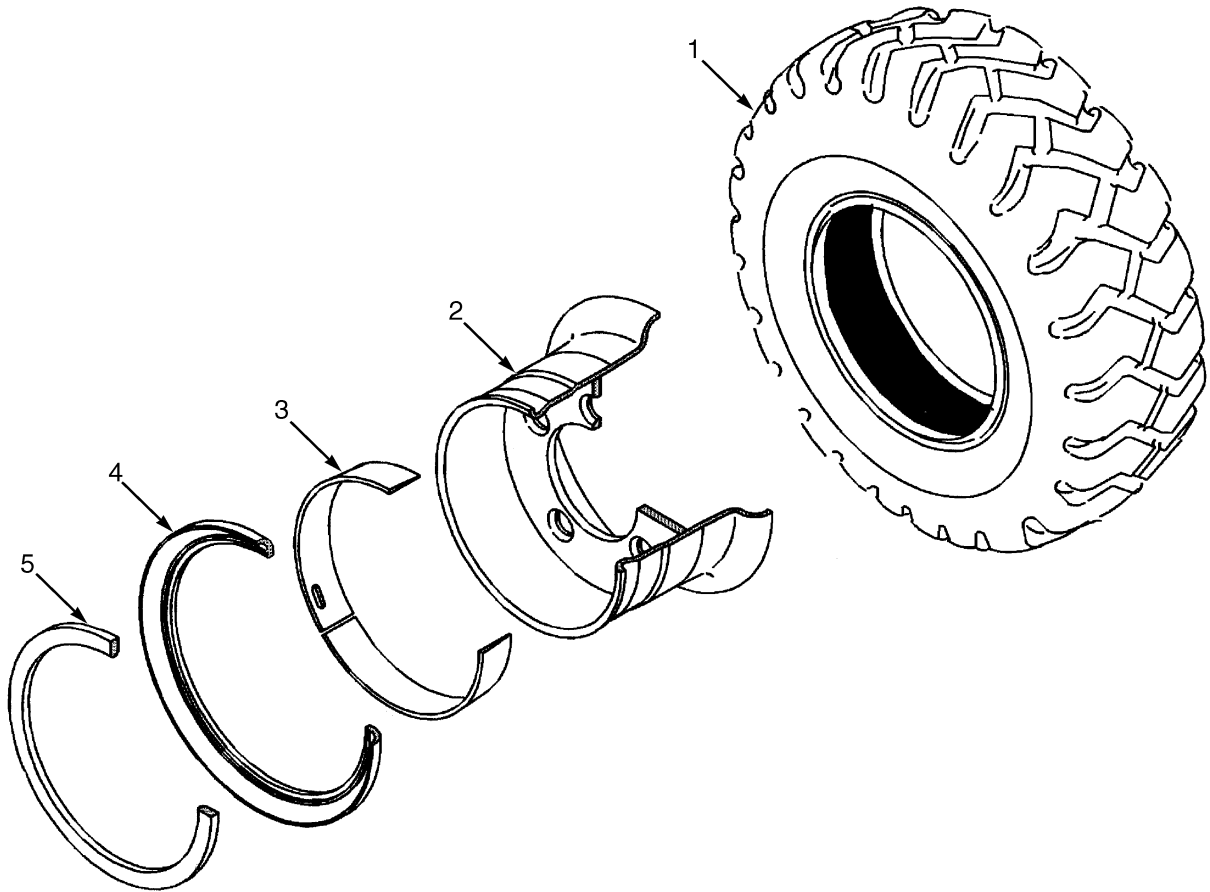
DRIVE AXLE ASSEMBLY DRY BRAKE

ITEM	PART NO.	DESCRIPTION	QTY
31	296426	Washer (Hardened).....	14
32	1531148	Retainer.....	2
33	234038	Dowel Pin.....	4
34	2027828	O-Ring.....	2
35	226430	Capscrew.....	4
36	296422	Washer.....	4
37	1503681	Hanger (RH).....	1
37	1503680	Hanger (LH).....	1
38	1579454	Brake Assembly (LH) (☞ Figure 8-5).....	1
39	1579455	Brake Assembly (RH) (☞ Figure 8-5).....	1
40	1327246	Lock Bolt.....	16
41	2063264	Brake Line (RH).....	1
42	1532335	Hub Assembly.....	2
42	1532339	Hub.....	1
43	302385	Pin.....	2
44	1532337	Bolt.....	6
45	2028621	Oil Seal.....	1
46	1375492	Roller Bearing.....	1
47	2027817	Oil Seal.....	1
48	1375486	Roller Bearing.....	1
49	1515219	Washer (Wheel Bearing).....	2
50	2027756	Bearing (Washer Lock).....	2
51	2028145	Locknut.....	2
52	293646	Capscrew.....	20
53	1532708	Axle Shaft.....	2
54	1537133	Wheel Nut.....	12
55	1523479	Ball Bearing.....	2
56	1517578	Drive Gear (2.17 Gear Ratio).....	1
56	1516530	Drive Gear (2.48 Gear Ratio).....	1
57	1522377	Oil Seal.....	1
58	1516534	Dust Cover.....	1
59	1517673	Input Shaft.....	1
60	1547757	Drive Shaft Assembly.....	1
60	1566461	Yoke.....	1
60	1566462	U-Joint.....	2
61	320264	Snap Ring.....	1
62	135158	Roller Bearing.....	1
63	1512561	Support.....	1

FOOTNOTES:

- a Included With Center Housing

**DRIVE TIRE AND WHEEL (Figure 6-3)
SOLID PNEUMATIC
SINGLE**



BP070012

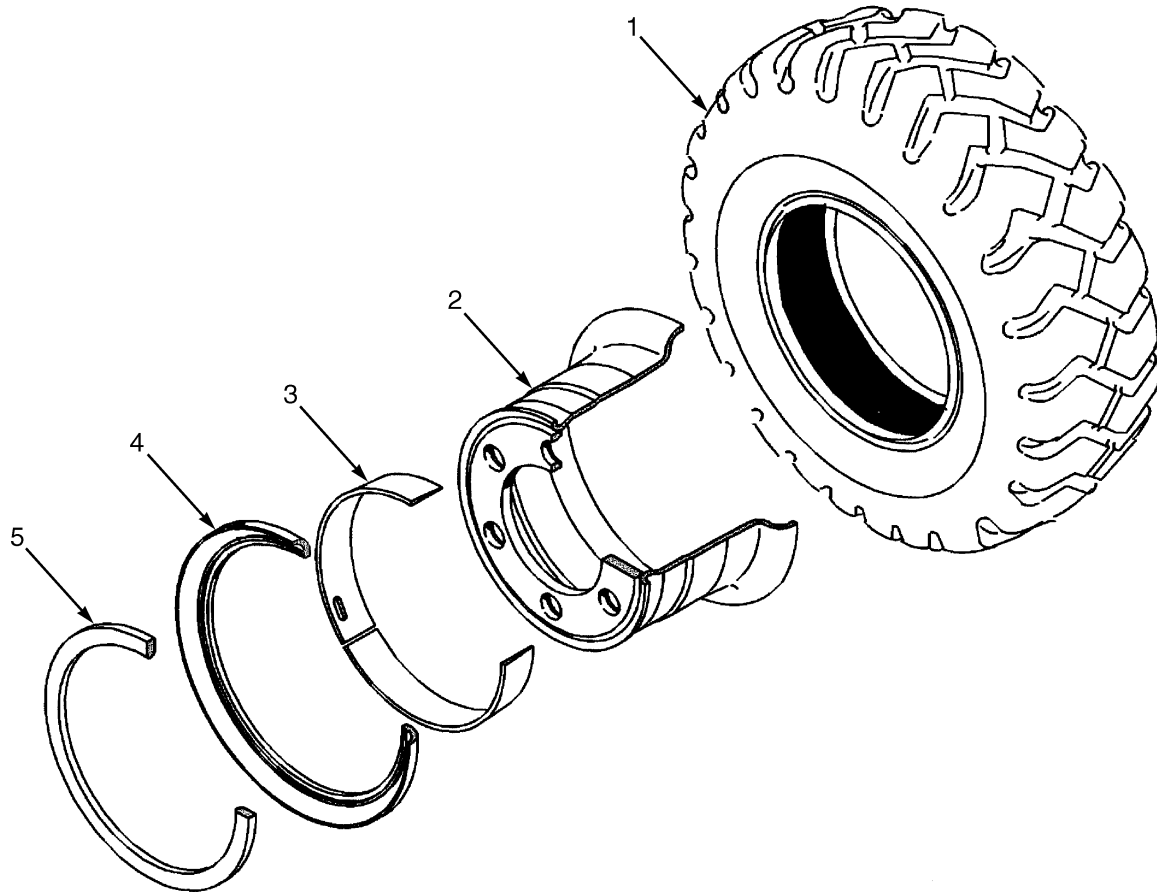
KEY:

A: 7.00 X 12 14 Solid Pneumatic (H2.0-2.5FT)

B: 28 X 9 15 Solid Pneumatic (H2.0-3.5FT)

ITEM	PART NO.	DESCRIPTION	QTY	
			A	B
1	1543060	Tire (Trell)	2	..
1	1543070	Tire (Monarch)	2	..
1	1543061	Tire (Trell)	2
1	1543071	Tire (Monarch)	2
2	2070073	Wheel Assembly	2	..
2	2070074	Wheel Assembly	2
3	161890	Side Ring	1	..
3	160653	Side Ring	1
4	1584694	Tapered Bead Seat Ring	1	..
4	1584695	Tapered Bead Seat Ring	1
5	161889	Locking Ring	1	..
5	980542	Locking Ring	1

DRIVE TIRE AND WHEEL (Figure 6-4) SOLID PNEUMATIC WIDE TREAD



BP070013

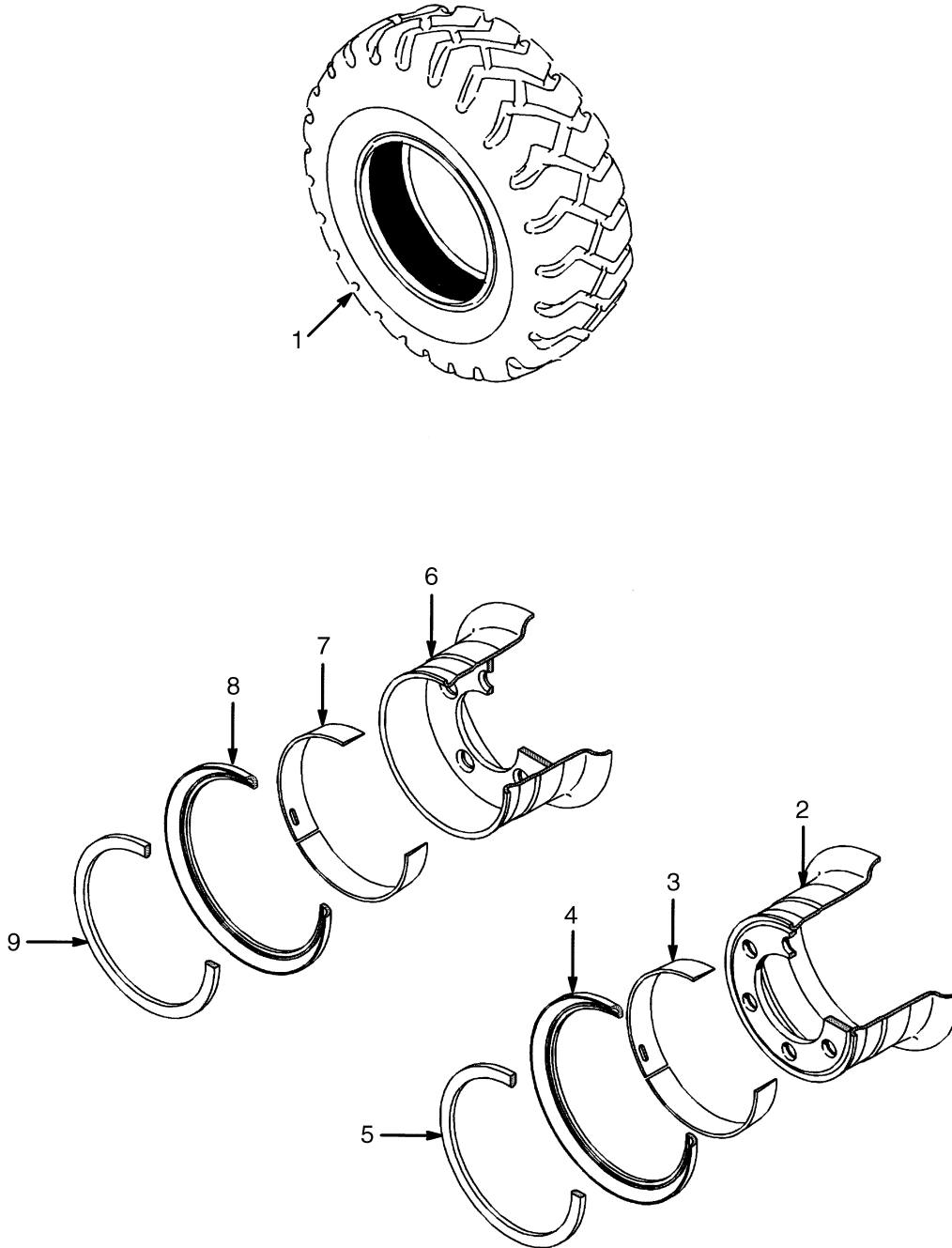
KEY:

A: 7.00 x 12 14 Solid Pneumatic (H2.0-2.5FT)

B: 28 x 9-15 14 Solid Pneumatic (H2.0-3.5FT)

ITEM	PART NO.	DESCRIPTION	QTY	
			A	B
1	1543060	Tire (Trell)	2	..
1	1543070	Tire (Monarch)	2	..
1	1543061	Tire (Trell)	2
1	1543071	Tire (Monarch)	2
2	2070075	Wheel Assembly	2	..
2	2070076	Wheel Assembly	2
3	161890	Side Ring	1	..
3	160653	Side Ring	1
4	1584694	Tapered Bead Seat Ring	1	..
4	1584695	Tapered Bead Seat Ring	1
5	161889	Locking Ring	1	..
5	980542	Locking Ring	1

DRIVE TIRE AND WHEEL (Figure 6-5) PNEUMATIC RADIAL

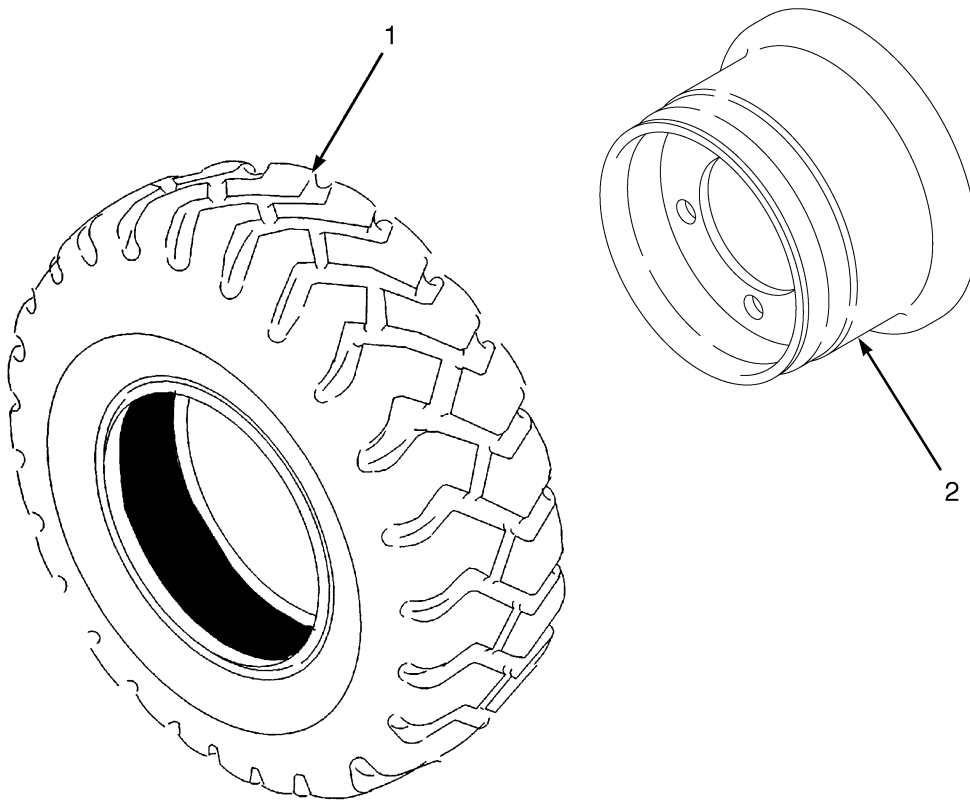


BP070014

**DRIVE TIRE AND WHEEL
PNEUMATIC RADIAL****KEY:****A: 7.00 R12 Pneumatic Radial (H2.0-2.5FT)****B: 225/75 R15 Pneumatic Radial (H2.0-3.5FT)**

ITEM	PART NO.	DESCRIPTION	QTY	
			A	B
1	1471829	Tire Assembly (Michelin XZM).....	2	..
1	1471591	Tubeless Bead Seal.....	1	..
1	1358179	Tire	1	..
1	1471922	Bead Seal Valve	1	..
1	1471835	Tire Assembly	2
1	1462617	Tubeless Bead Seal.....	..	1
1	1358183	Tire (Michelin XZM)	1
1	1471922	Bead Seal Valve	1
2	2070073	Wheel Assembly	2	..
2	2070075	Wheel Assembly (Wide Tread)	2	..
3	161890	Side Ring.....	1	..
4	1584694	Tapered Bead Seat Ring	1	..
5	161889	Locking Ring.....	1	..
6	2070074	Wheel Assembly	2
6	2070076	Wheel Assembly (Wide Tread)	2
7	160653	Side Ring.....	..	1
8	1584695	Tapered Bead Seat Ring	1
9	980542	Locking Ring.....	..	1

DRIVE TIRE AND WHEEL (Figure 6-6) SNAP-ON SOLID TIRE



BP000223

**DRIVE TIRE AND WHEEL
SNAP-ON SOLID TIRE**

KEY:

A: 7.00 x 12 Tire

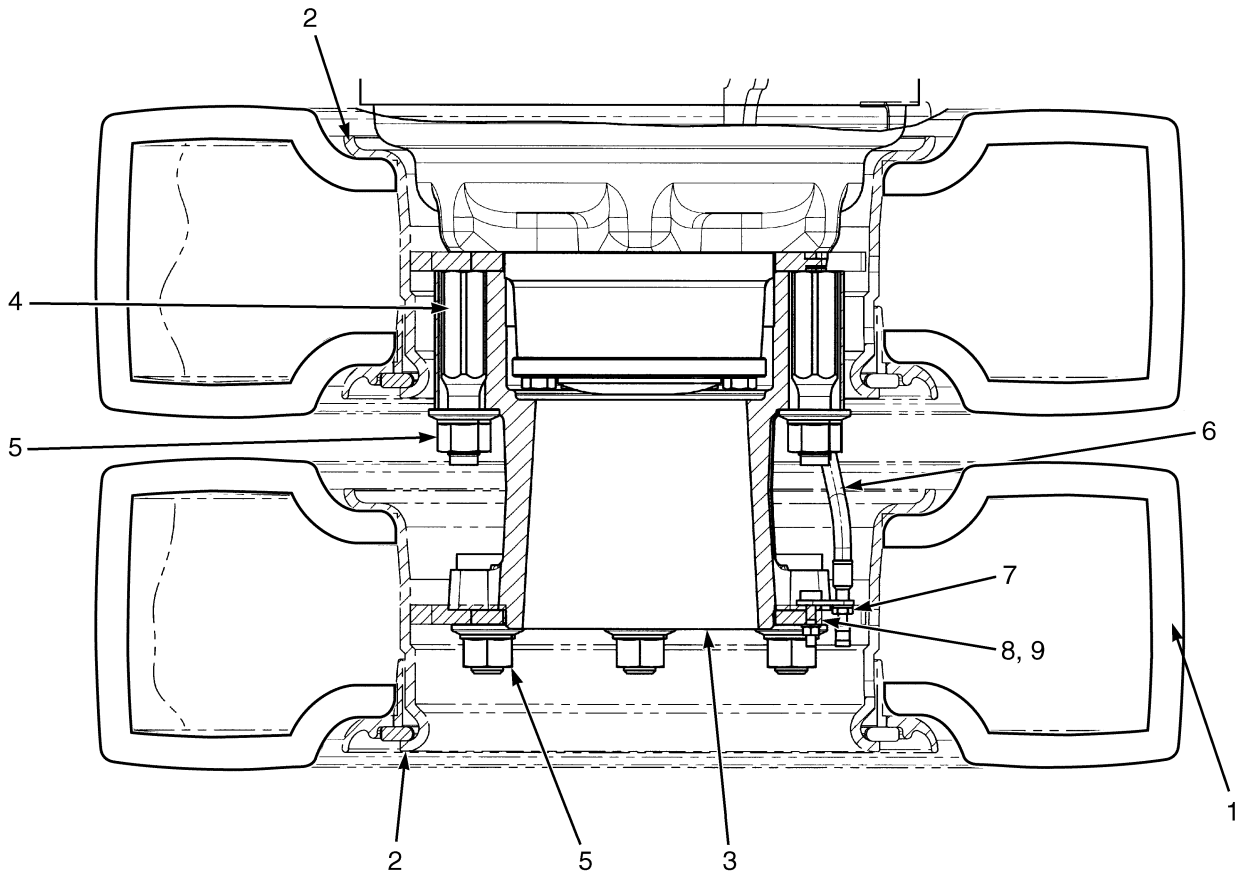
B: 28 x 9-15 Tire

C: 7.00 x 11 Wide Tread

D: 28 x 9-15 Wide Tread

ITEM	PART NO.	DESCRIPTION	QTY			
			A	B	C	D
1	1543063	Tire	2	..	2	..
1	1543064	Tire	2	..	2
2	2070080	Rim	2
2	2070079	Rim	2
2	2070078	Rim	2	..
2	2070077	Rim	2

DUAL DRIVE WHEELS AND TIRES (Figure 6-7)



HP070054

DUAL DRIVE WHEELS AND TIRES

ITEM	PART NO.	DESCRIPTION	QTY
1	1543070	Tire (Monarch)	4
1	1543060	Tire (Trell)	4
2	2075454	Wheel	4
3	1552290	Hub Assembly.....	2
3	1532337	Bolt	6
3	1545402	Hub.....	1
4	1545401	Stud	12
5	1537133	Wheel Nut.....	12
6	1583169	Valve Stem Extension	2
7	1584690	Bracket.....	2
8	136687	Nut	2
9	292680	Lockwasher.....	2