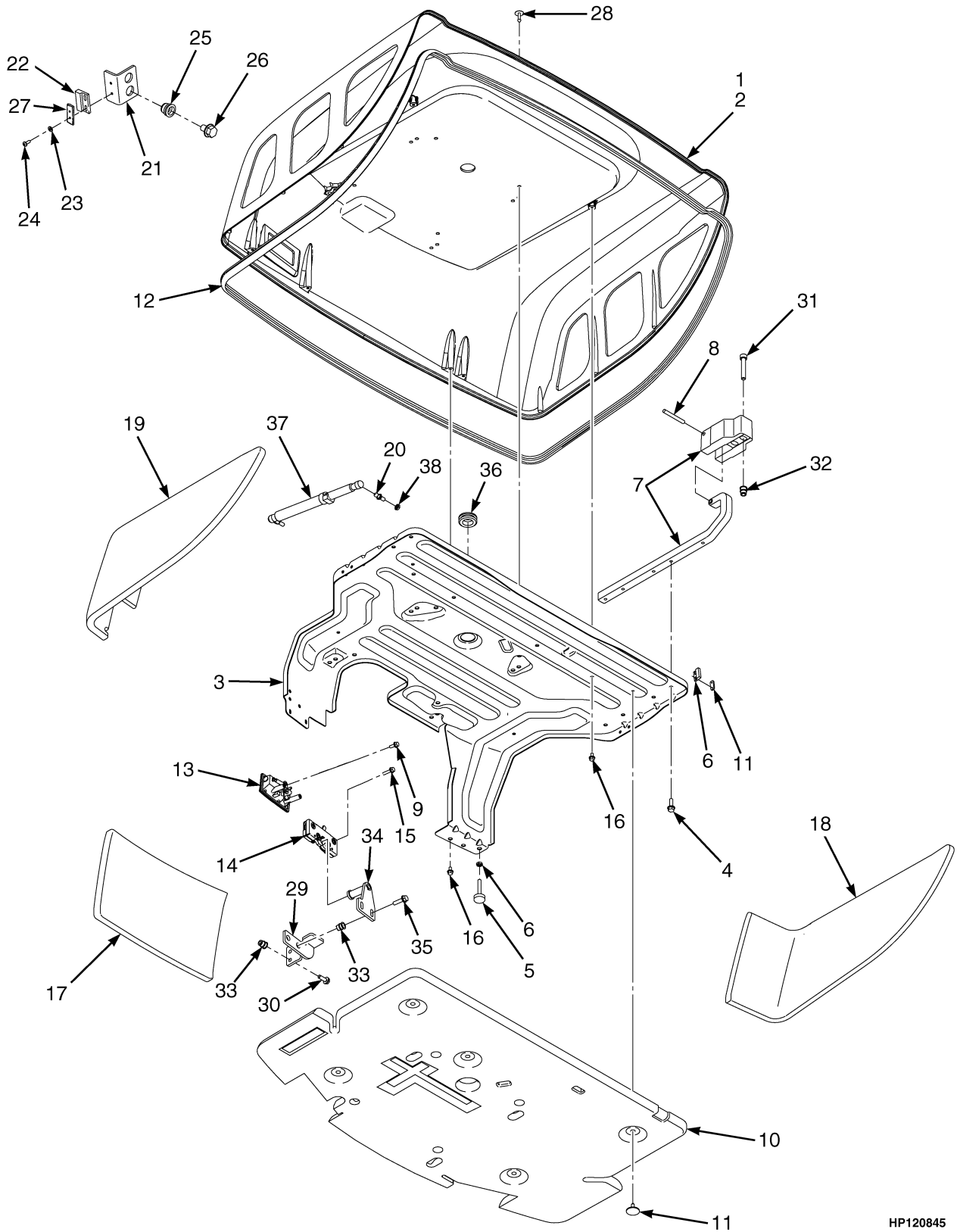


## HOOD ASSEMBLY (Figure 1-1)



HP120845

**HOOD ASSEMBLY**

ITEM	PART NO.	DESCRIPTION	QTY
1	<b>b</b> 1589667	Hood Assembly (Low Noise) .....	1
1	<b>c</b> 1543994	Hood Assembly (Standard).....	1
1	1594927	Hood Assembly (Vented) .....	1
1	<b>ac</b> 1603215	Hood Assembly (Non-Vented) .....	1
1	<b>ab</b> 1605122	Hood Assembly (Low Noise) .....	1
1	<b>a</b> 1603216	Hood Assembly (Vented) .....	1
2	<b>b</b> 1590149	Hood (Low Noise).....	1
2	<b>c</b> 1543995	Hood (Standard).....	1
2	1594926	Hood (Vented) .....	1
2	<b>ac</b> 1603212	Hood (Non-Vented) .....	1
2	<b>ab</b> 1605121	Hood (Low Noise).....	1
2	<b>a</b> 1603214	Hood (Vented) .....	1
3	1544846	Reinforcement Assembly.....	1
4	1510113	Capscrew .....	8
5	1528906	Stop Screw .....	2
6	329069	Nut.....	4
7	1548618	Hinge Assembly .....	2
8	302380	Pin.....	2
9	1527876	Capscrew .....	2
10	1545387	Hood Liner.....	1
11	1304971	Fastener .....	4
12	1580652	Seal .....	1
13	1582287	Handle .....	1
14	1582286	Latch Rotor.....	1
15	1527878	Capscrew .....	4
16	1534417	Capscrew .....	6
17	<b>b</b> 1552010	Liner (Front Panel) (Low Noise).....	1
18	<b>b</b> 1552011	Liner (LH Panel) (Low Noise) .....	1
19	<b>b</b> 1552012	Liner (RH Panel) (Low Noise).....	1
20	<b>c</b> 1563369	Ball Stud .....	4
20	<b>b</b> 1563369	Ball Stud .....	3
20	<b>b</b> 1606659	Ball Stud .....	1
21	1527228	Bracket (Hood Switch) .....	1
22	1565545	Magnet (Reed Switch) .....	1
23	320152	Washer .....	4
24	302010	Screw.....	4
25	1531557	Insert.....	2
26	1583611	Capscrew.....	2
27	1585765	Plate .....	1
28	1347045	Fastener.....	8
29	1583672	Bumper Rest.....	1
30	1583611	Capscrew.....	2
31	296032	Capscrew.....	4
32	1530244	Insert.....	4
33	1530243	Insert.....	4
34	1584617	Striker Bolt .....	1
35	1527881	Capscrew.....	2
36	1561015	Grommet.....	1
37	<b>c</b> 1563497	Gas Spring.....	2
37	<b>b</b> 1560647	Gas Spring (LH).....	1
37	<b>b</b> 1563836	Gas Spring (RH) .....	1

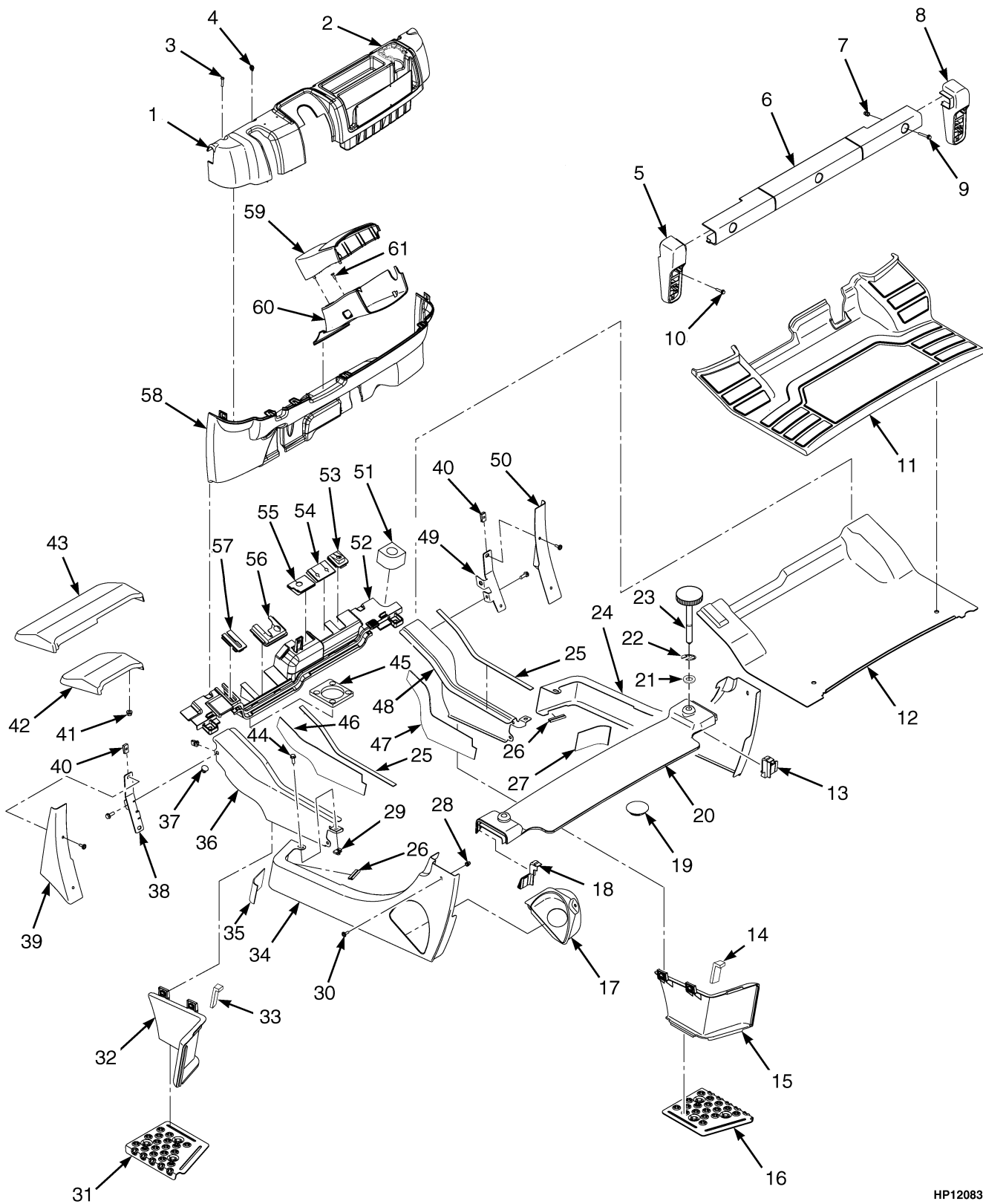
## HOOD ASSEMBLY

ITEM	PART NO.	DESCRIPTION	QTY
38	329069	Nut .....	2
	a 1585592	Plug (Not Illustrated) .....	1

**FOOTNOTES:**

- a Use With Swivel Seat
- b With Cab
- c With Overhead Guard

## FLOORPLATES AND COVERS (Figure 1-2)



HP120831

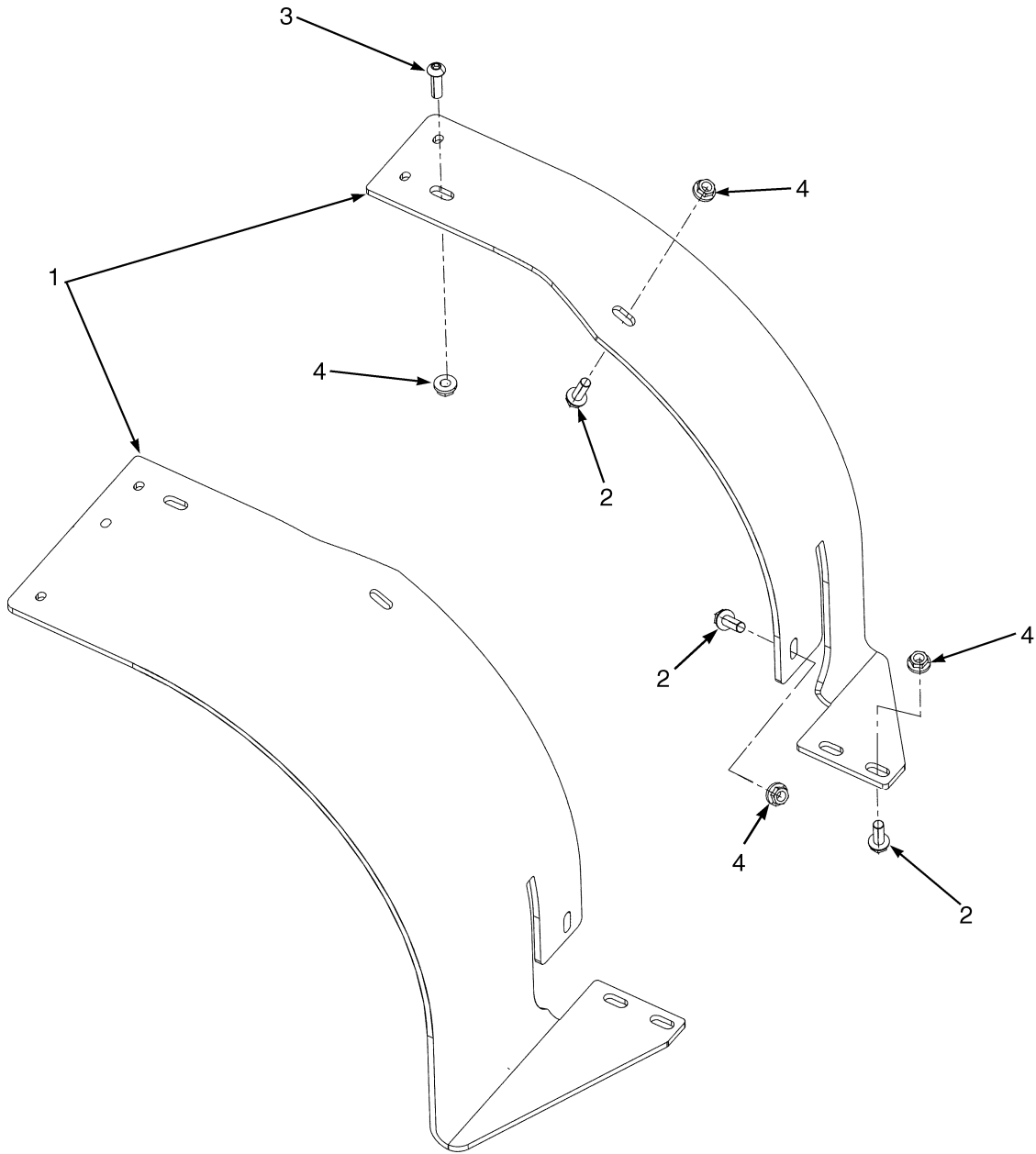
**FLOORPLATES AND COVERS****KEY:****A: With Cab****B: With Overhead Guard**

ITEM	PART NO.	DESCRIPTION	QTY	
			A	B
1	1517420	Dash Assembly (Manual Valve) .....	1	1
1	1517421	Dash Assembly (Electronic Valve) .....	1	1
2	2070975	Cup Holder .....	1	1
3	2071261	Capscrew .....	5	5
4	2065667	Clip .....	6	6
5	2056822	Bracket (Tail Light) (LH) .....	1	1
6	2069203	Cover (Rear) .....	..	1
7	1531001	Insert .....	..	8
7	1531001	Insert .....	5	..
8	2056823	Bracket (Tail Light) (RH) .....	1	1
9	1540643	Capscrew .....	3	3
10	1586495	Capscrew .....	4	4
11	2071262	Floor Mat .....	1	1
12	1573774	Floor Plate .....	1	1
13	2070274	Seal Panel (RH) .....	1	1
14	1596624	Seal (RH) .....	1	1
15	1574277	Step Panel (RH) .....	1	1
16	1544415	Plate (RH) .....	1	1
17	1517656	Splash Shield (Diesel) .....	1	1
18	2070273	Seal Panel (LH) .....	1	1
19	2021395	Cap (LPG) .....	1	1
20	1547466	Radiator Cover Assembly .....	..	1
20	1547467	Seal (LH) .....	..	1
20	1547468	Seal (RH) .....	..	1
21	320157	Washer .....	..	2
22	353206	Snap Ring .....	..	2
23	1520970	Screw .....	..	2
24	1527946	Rear Panel (RH) .....	1	1
25	1564529	Seal .....	2	2
26	1582072	Trim Seal .....	2	2
27	1597058	Damping Sheet (RH Rear Panel) .....	1	1
28	1609707	Sound Liner .....	1	..
29	1609709	Sound Liner .....	1	..
30	1609708	Sound Liner .....	1	..
31	1609706	Sound Liner .....	1	..
32	1531558	Insert .....	6	6
33	1480237	Clip Nut (Diesel) .....	23	23
33	1480237	Clip Nut (LPG) .....	21	21
34	1530019	Screw .....	6	6
35	1544413	Plate (LH) .....	1	1
36	1574275	Step Panel (LH) .....	1	1
37	1596625	Seal (LH) .....	1	1
38	1527939	Panel (Rear) (LH, Diesel) .....	1	1
38	1527940	Panel (Rear) (LH, LPG) .....	1	1
39	1597052	Damping Sheet (LH Rear Panel) .....	1	1
40	1540860	Front Panel (LH) .....	1	1

## FLOORPLATES AND COVERS

ITEM	PART NO.	DESCRIPTION	QTY	
			A	B
41	1581079	Plug .....	4	4
42	1590145	Bracket (LH) (Fender Cover).....	1	1
43	1563881	Cover (LH) (Fender).....	1	1
44	1350215	Nut (Foldover).....	4	4
45	1544153	Lock Nut (Standard Tread, Wide Tread) .....	4	4
45	1544153	Lock Nut (Dual Tread).....	6	6
46	2069008	Mud Guard (Standard Tread).....	2	2
46	2069545	Mud Guard (RH, Wide Tread).....	1	1
46	2069954	Mud Guard (RH, Dual Tread).....	1	1
47	2069544	Mud Guard (LH, Wide Tread).....	1	1
47	2069550	Mud Guard (LH, Dual Tread) .....	1	1
48	1583611	Capscrew (Diesel) .....	23	23
48	1583611	Capscrew (LPG) .....	21	21
49	1579837	Seal (Wet Brake) .....	1	1
49	1580093	Seal (Dry Brake) .....	1	1
50	1597051	Damping Sheet (LH, Front Panel).....	1	1
51	1597070	Damping Sheet (RH, Front Panel).....	1	1
52	1540870	Front Panel (RH).....	1	1
53	1590147	Bracket (RH) (Fender Cover) .....	1	1
54	1563883	Cover (RH) (Fender) .....	1	1
55	1530135	Grommet (RH).....	1	1
56	1563840	Seal Plate Assembly.....	1	1
56	1529427	Seal .....	1	1
57	2069464	Seal .....	1	..
58	2065799	Seal (Manual Valve).....	1	..
58	2065826	Seal (Electronic Valve).....	1	..
59	2065798	Seal (Manual Valve).....	1	..
59	2065827	Seal (Electronic Valve).....	1	..
60	2065797	Seal .....	1	..
61	2065796	Seal .....	1	..
62	2071595	Kick Panel (Single Brake Pedal) .....	1	1
63	2065668	Cover (Steering Column) (Upper).....	1	1
63	2071596	Kick Panel (Dual Brake Pedal).....	1	1
64	2065666	Cover (Steering Column) (Lower).....	1	1
65	2027655	Screw.....	2	2

## FENDER EXTENSIONS (Figure 1-3)

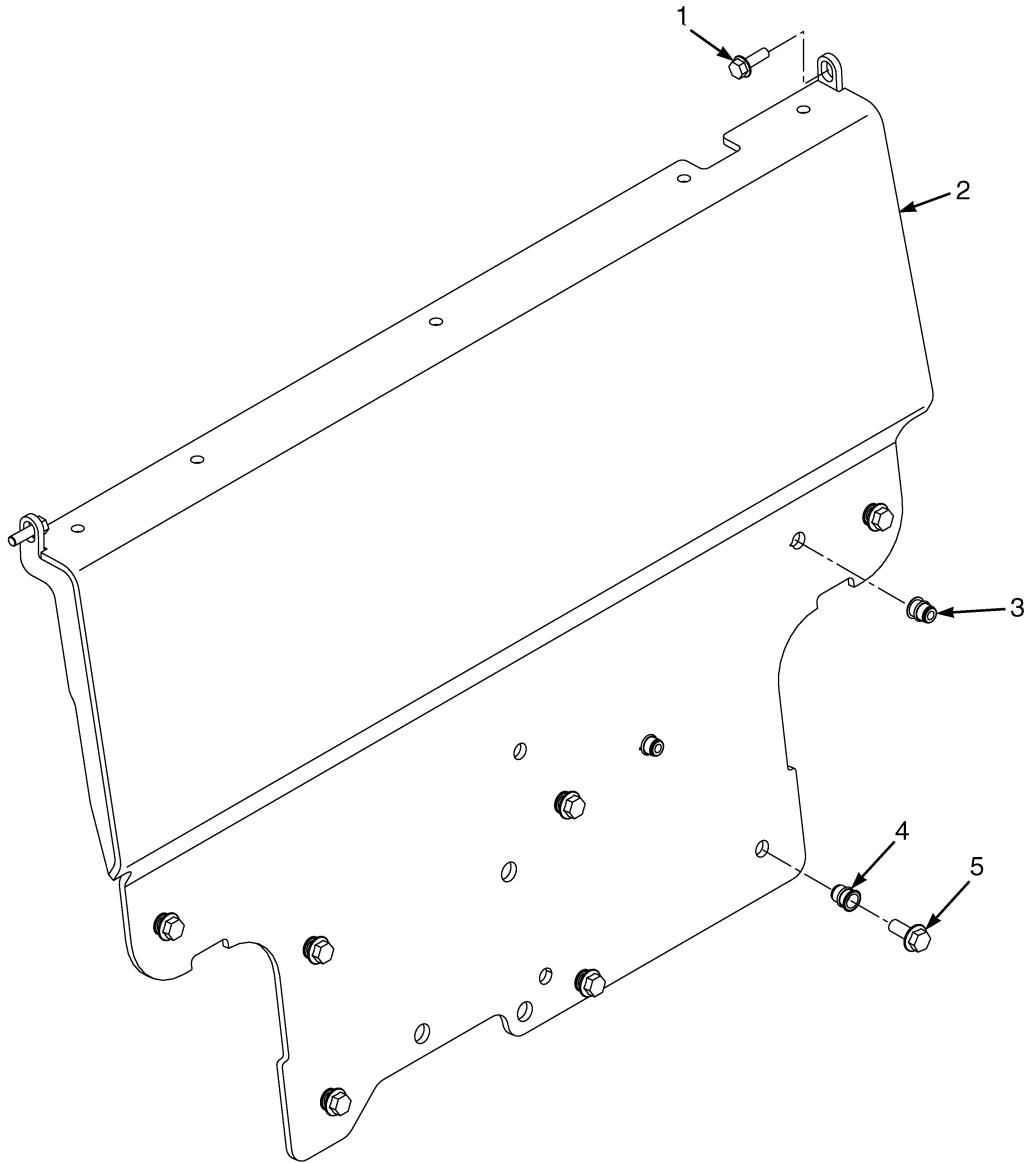


HP120835

**FENDER EXTENSIONS**

ITEM	PART NO.	DESCRIPTION	QTY
1	1562359	Fender (Wide Width) (LH).....	1
1	1562361	Fender (Dual) (LH).....	1
1	1562360	Fender (Wide Width) (RH).....	1
1	1562362	Fender (Dual) (RH).....	1
2	1586630	Capscrew.....	8
3	2076289	Capscrew.....	2
4	1586432	Nut.....	10

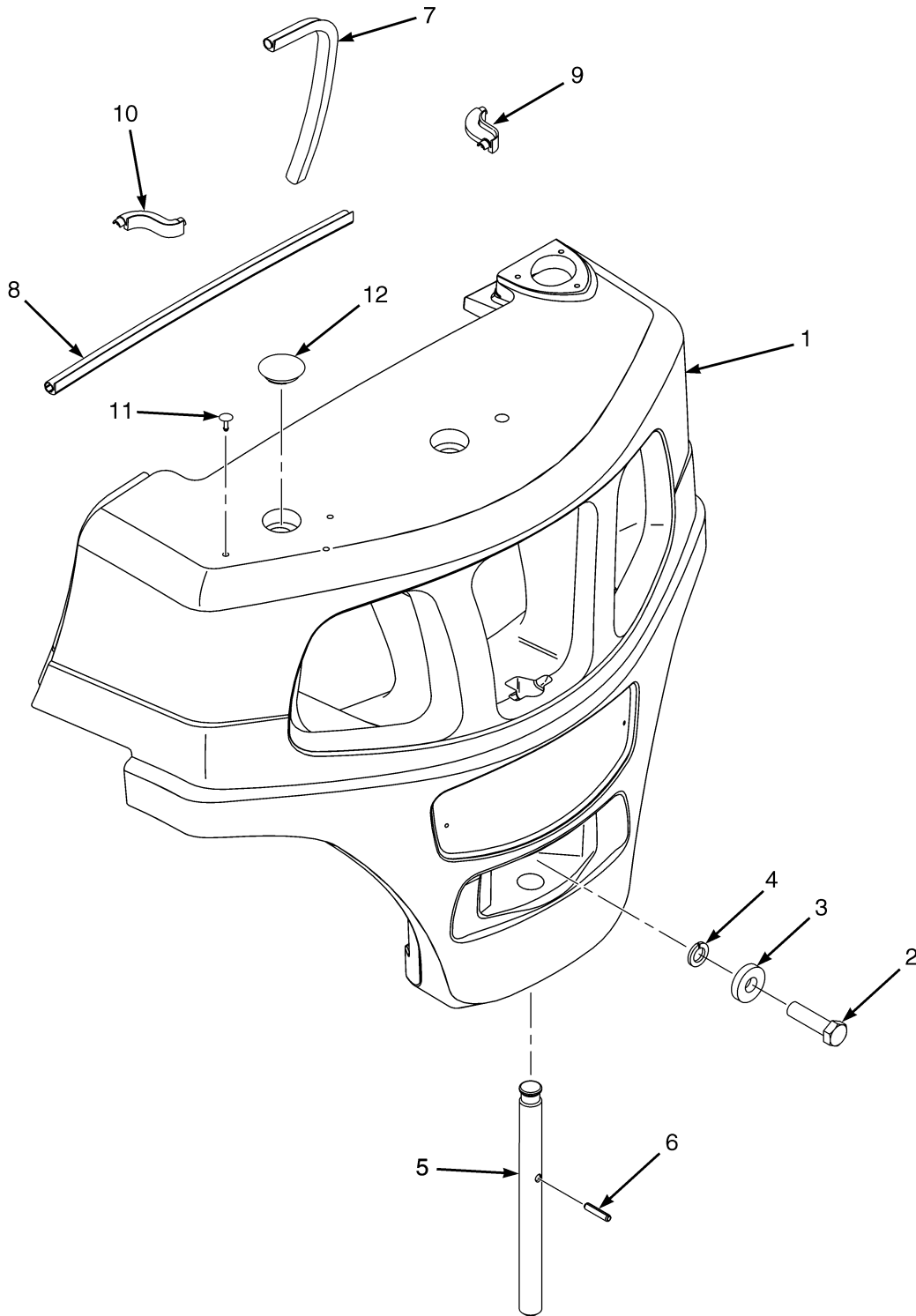
## COWL MOUNT (Figure 1-4)



HP120730

ITEM	PART NO.	DESCRIPTION	QTY
1	1583611	Capscrew.....	2
2	1586815	Cowl.....	1
3	1530243	Insert.....	2
4	1530244	Insert.....	7
5	1605990	Capscrew.....	7

## COUNTERWEIGHTS (Figure 1-5)



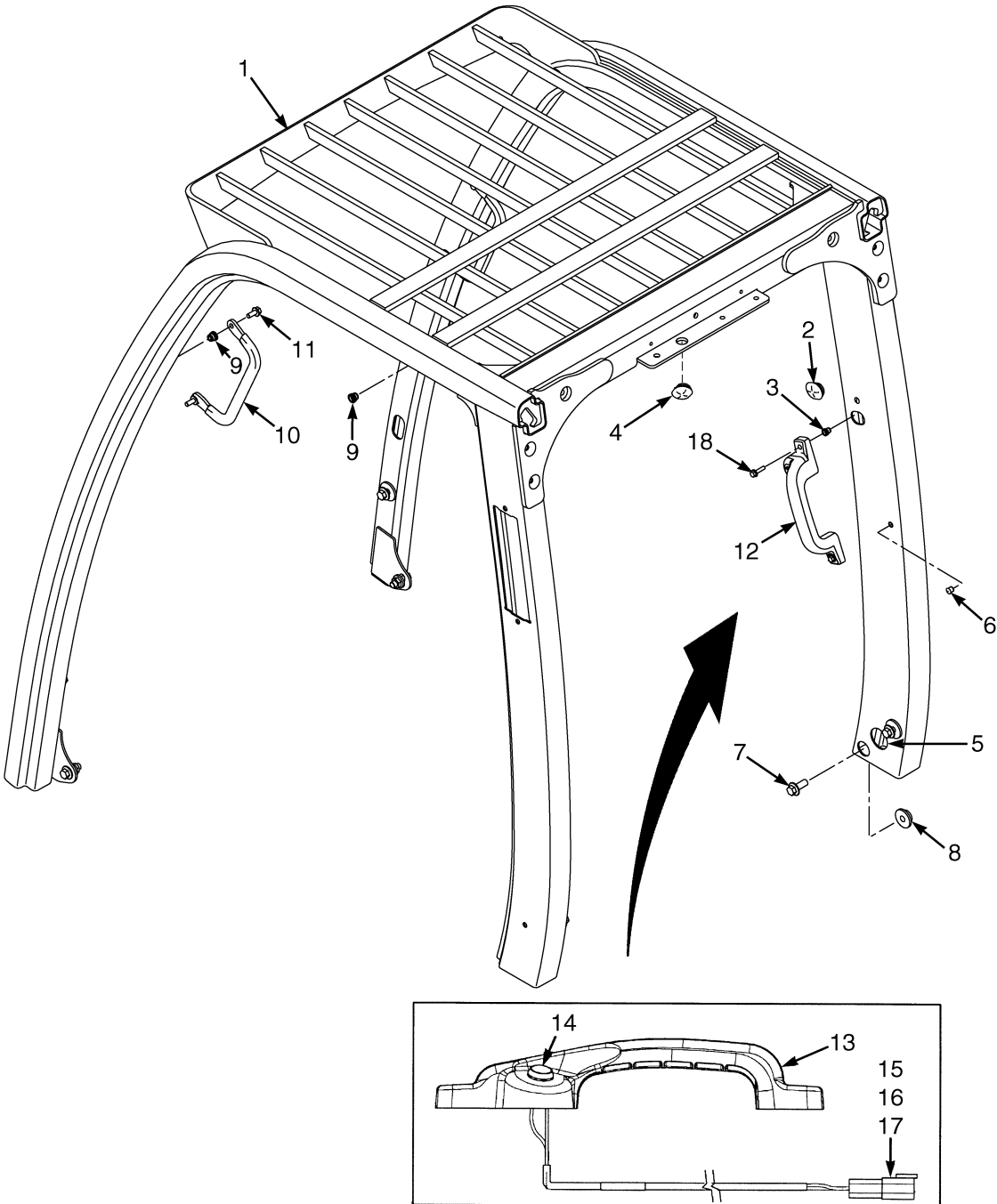
HP120833

**COUNTERWEIGHTS**

ITEM	PART NO.	DESCRIPTION	QTY
1	1533597	Counterweight (H2.0FT) .....	1
1	1533598	Counterweight (H2.5FT) .....	1
1	1533599	Counterweight (H3.0FT) .....	1
1	1533601	Counterweight (H3.5FT) .....	1
2	<b>a</b> 292608	Capscrew (101,6 mm) .....	1
2	<b>b</b> 292613	Capscrew (152,4 mm) .....	1
3	1375214	Washer .....	1
4	292689	Lockwasher.....	1
5	1533596	Pin .....	1
6	302491	Pin .....	1
7	1590279	Seal (Counterweight).....	1
8	1590280	Seal (Counterweight) (Top).....	1
9	1590152	Seal (RH).....	1
10	1590153	Seal (LH) .....	1
11	1347045	Fastener.....	4
12	2021395	Cap .....	2

**FOOTNOTES:****a** H2.0FT**b** H2.5-3.5FT

## OVERHEAD GUARD (Figure 1-6)

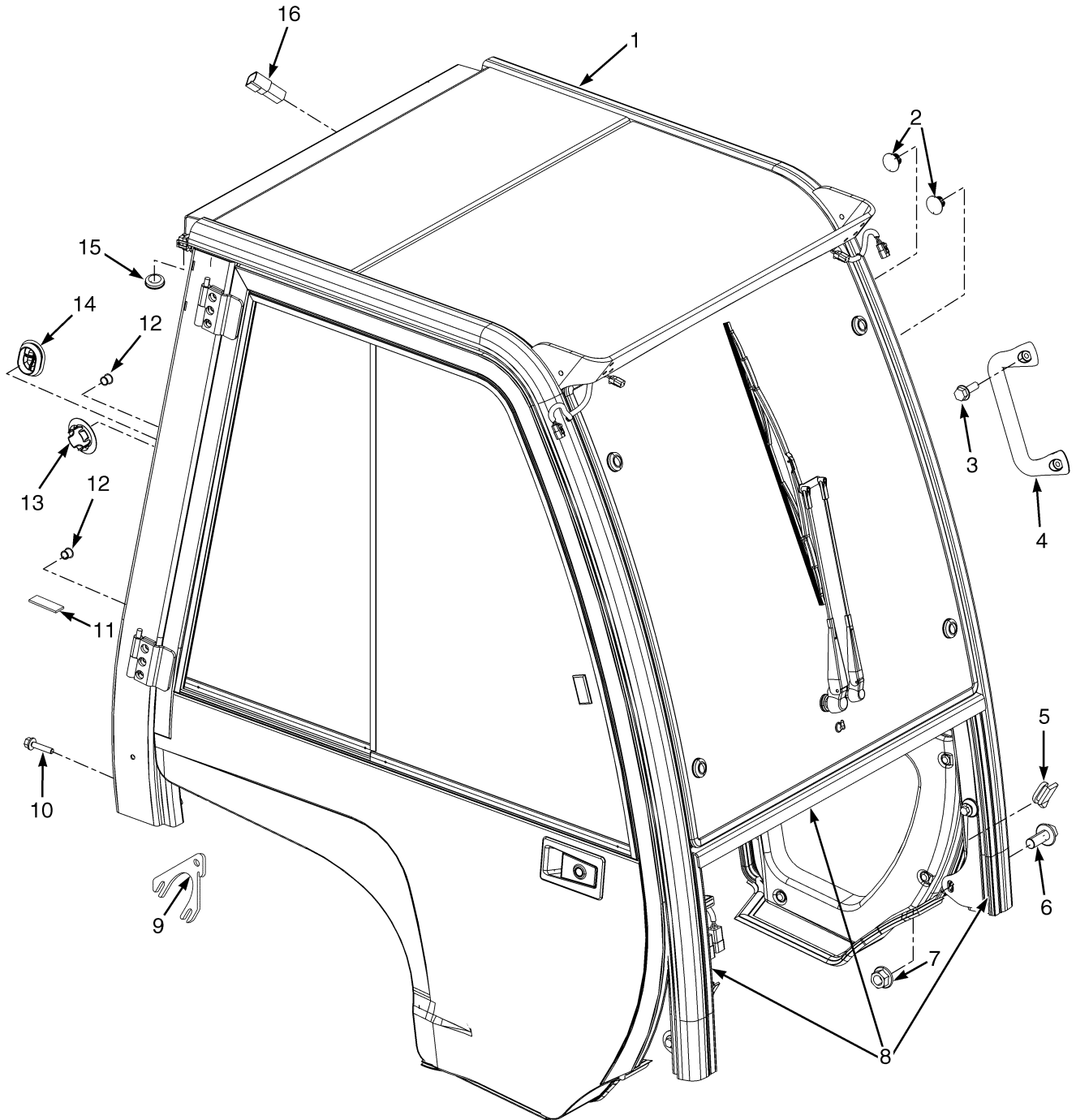


HP120756

**OVERHEAD GUARD**

ITEM	PART NO.	DESCRIPTION	QTY
1	1556574	Overhead Guard (High) .....	1
1	1556713	Overhead Guard (Low) .....	1
2	1558219	Grommet.....	3
3	1531558	Insert.....	2
4	1560671	Grommet.....	1
5	1581654	Grommet.....	1
6	1494888	Plug .....	2
7	1528889	Capscrew.....	8
8	1528888	Nut .....	2
9	1531557	Insert.....	4
10	1536813	Handle (Grab).....	1
11	1583611	Capscrew.....	2
12	2070223	Handle Assembly (RH, Rear) .....	1
13	2069454	Handle .....	1
14	1566726	Switch (Horn) .....	1
15	1493465	Connector.....	1
16	1330414	Secondary Lock.....	1
17	1330437	Terminal (Pin) .....	2
18	1586495	Capscrew.....	2

## CAB AND ATTACHING PARTS (Figure 1-7)

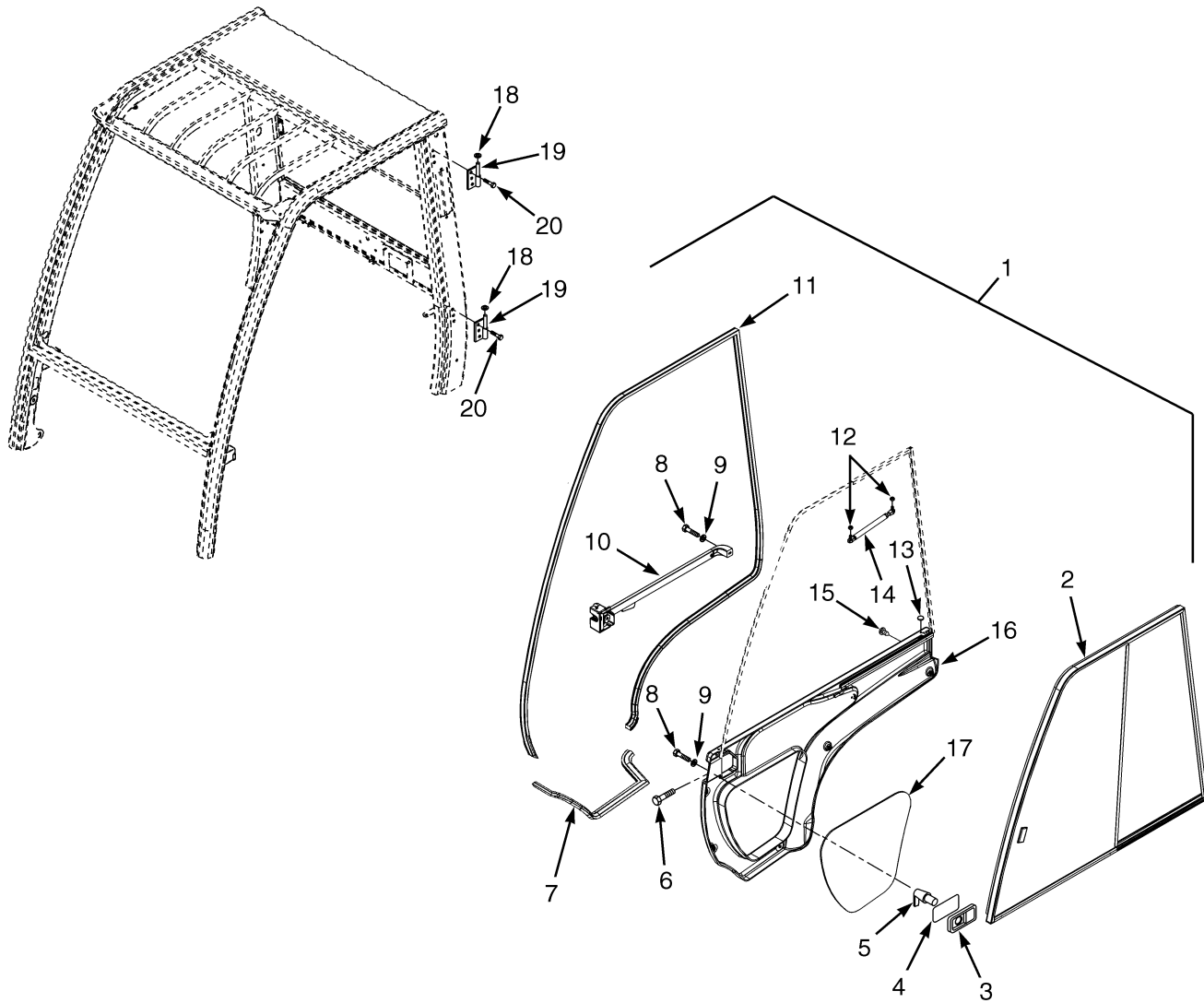


BP120157

**CAB AND ATTACHING PARTS**

ITEM	PART NO.	DESCRIPTION	QTY
1	1519232	Cab Assembly (☞ Figure 1-8, ☞ Figure 1-9, ☞ Figure 1-10, ☞ Figure 1-11, ☞ Figure 1-12) .....	1
2	1574301	Plug .....	8
3	1583611	Capscrew .....	8
4	1536813	Handle (Grab).....	1
5	1589787	Seal .....	2
6	1528889	Capscrew .....	8
7	1528888	Nut.....	2
8	1611140	Seal (Three Piece) .....	1
9	1610890	Shim .....	AR
10	1586495	Capscrew .....	6
11	1609621	Seal .....	1
12	1494888	Plug .....	2
13	1599415	Plug .....	1
14	1558219	Grommet .....	1
15	1560671	Grommet .....	1
16	1351681	Connector.....	1

## CAB (Figure 1-8) LH DOOR



HP120861

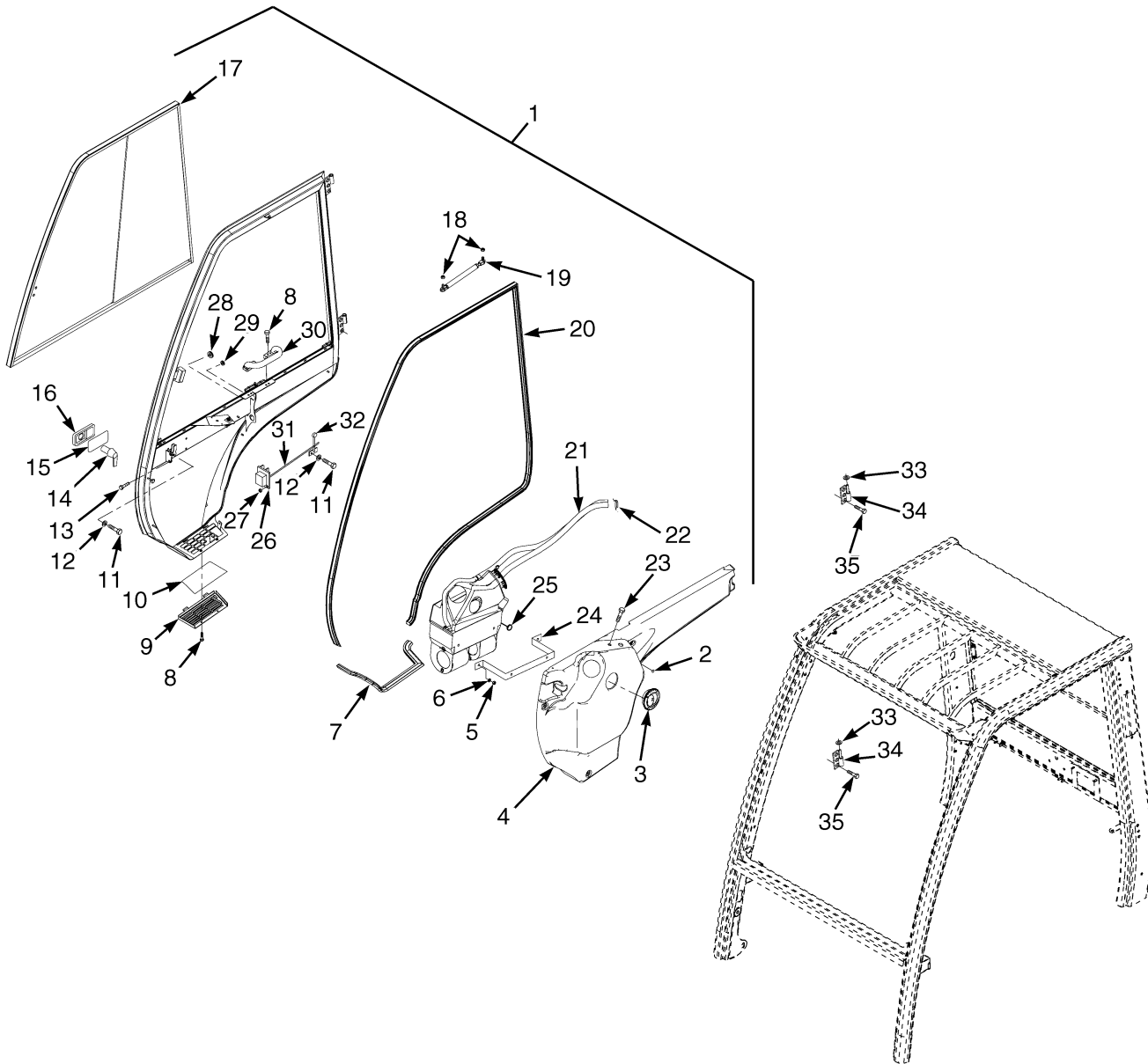
**CAB  
LH DOOR**

ITEM	PART NO.	DESCRIPTION	QTY
	1519232	Cab Assembly.....	1
1	1598417	Door Assembly (LH) .....	1
2	1598396	Sliding Window (LH) .....	1
3	1598393	Grip .....	1
4	1598394	Shim.....	1
5	1598392	Lever .....	1
6	296229	Capscrew .....	2
7	1393539	Seal.....	AR
8	302047	Screw .....	5
9	320156	Washer.....	5
10	1393479	Handle and Latch (LH).....	1
11	1515337	Seal.....	AR
12	316835	Nut .....	2
13	1598390	Plug.....	2
14	1598397	Gas Spring .....	1
15	1598389	Fastener .....	5
16	1598391	Cover (Door, LH) .....	1
17	1598395	Screen (Door, Lower, LH) .....	1
18	1468312	Washer .....	2
19	1503958	Hinge (LH).....	2
20	1493308	Bolt .....	12
	a 1598390	Plug .....	5

**FOOTNOTES:**

a Not Illustrated

## CAB (Figure 1-9) RH DOOR AND HEATER ASSEMBLY

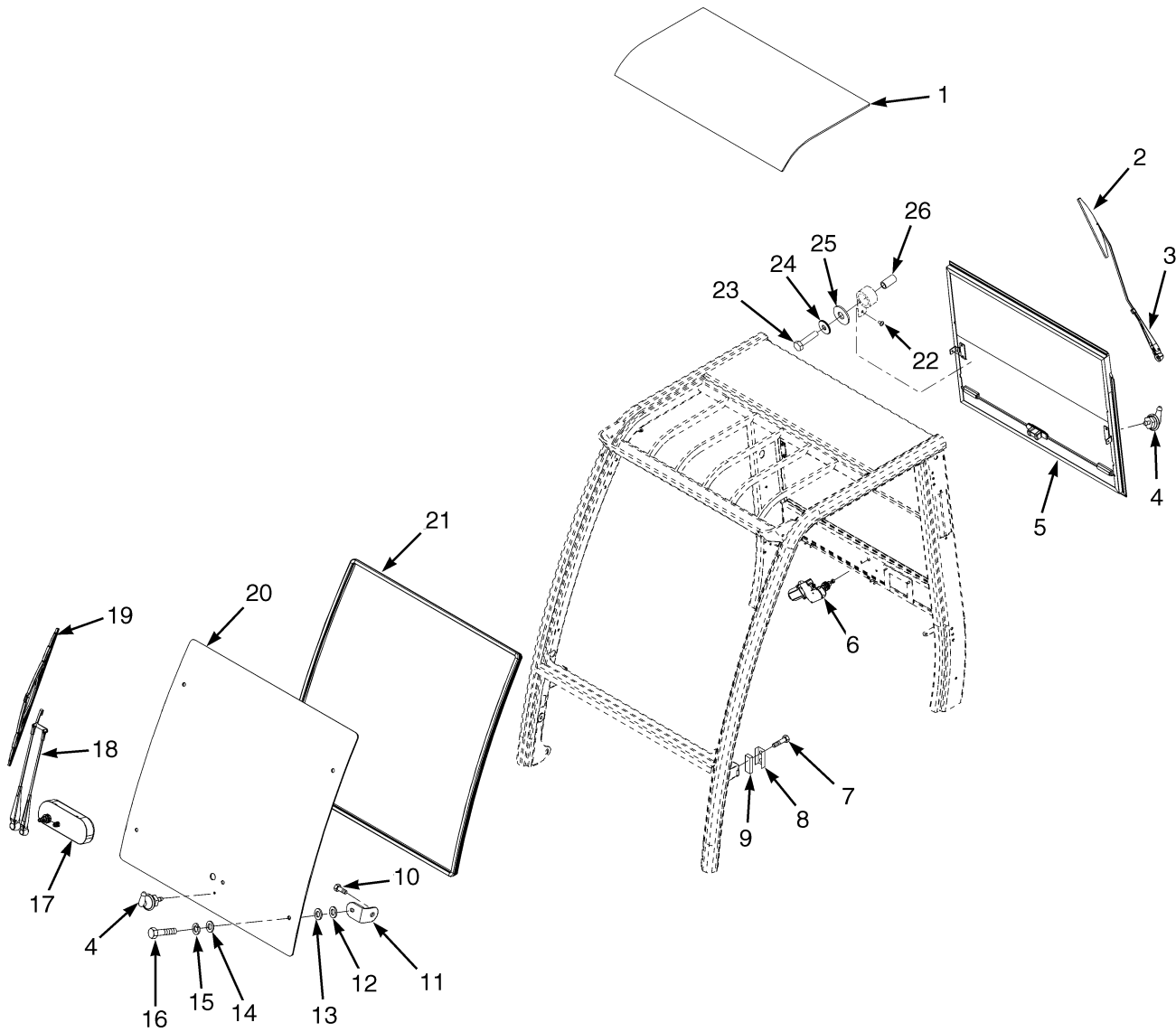


HP120863

**CAB**  
**RH DOOR AND HEATER ASSEMBLY**

ITEM	PART NO.	DESCRIPTION	QTY
	1519232	Cab Assembly.....	1
1	1598416	Door Assembly (RH) .....	1
2	1598389	Fastener .....	6
3	1598398	Nozzle .....	3
4	1598407	Cover (Door, RH) .....	1
5	239503	Nut .....	2
6	320158	Washer.....	2
7	1393539	Seal.....	AR
8	1598399	Screw .....	6
9	1598401	Bracket .....	1
10	1598400	Filter .....	1
11	302047	Screw .....	6
12	320156	Washer.....	6
13	296229	Capscrew .....	2
14	1598411	Lever .....	1
15	1598394	Shim.....	1
16	1598393	Grip .....	1
17	1598413	Sliding Window (RH).....	1
18	316835	Nut .....	2
19	1598414	Gas Spring .....	1
20	1515337	Seal.....	AR
21	1598404	Heater Assembly.....	1
21	1598675	Heater .....	1
21	1598674	Hose .....	4
21	1598673	Switch .....	1
21	1598672	Valve .....	1
21	1598671	Wire Harness.....	1
21	1598670	Connector .....	2
22	1393499	Clamp.....	1
23	1598403	Screw .....	4
24	1598669	Bracket .....	1
25	1598390	Plug.....	5
26	1598412	Lock (RH).....	1
27	1598408	Nut .....	2
28	1579116	Grommet .....	2
29	1598402	Grommet.....	1
30	1598406	Handle.....	1
31	1598409	Release Bar .....	1
32	1598410	Lever .....	1
33	1468312	Washer .....	2
34	1503959	Hinge (RH) .....	2
35	1493308	Bolt.....	12

## CAB (Figure 1-10) WINDOWS AND WINDOW WIPER SYSTEM



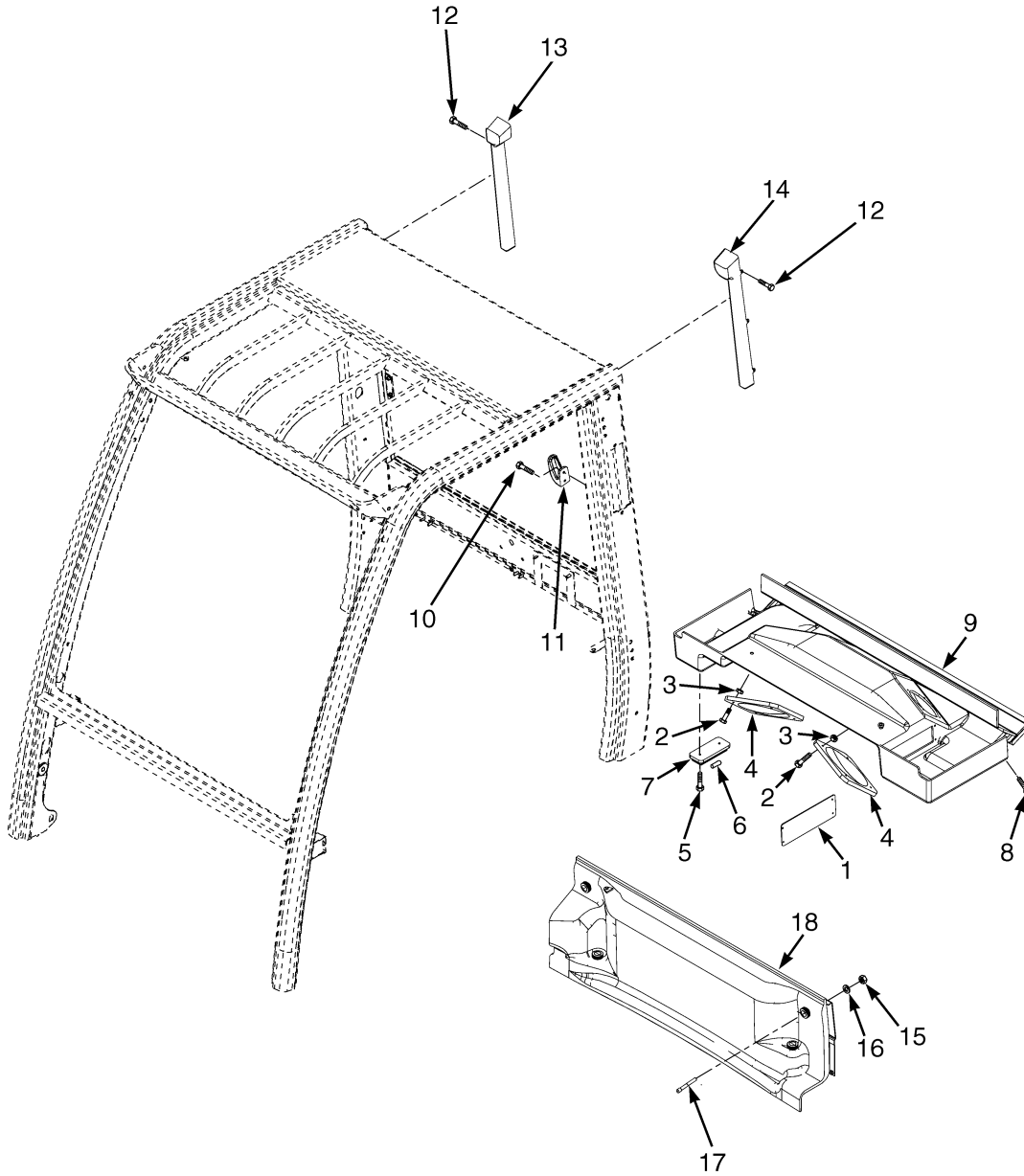
HP120862

## CAB

### WINDOWS AND WINDOW WIPER SYSTEM

ITEM	PART NO.	DESCRIPTION	QTY
	1519232	Cab Assembly.....	1
1	1598293	Window (Roof).....	1
2	1598297	Wiper Blade (Rear).....	1
3	1598296	Wiper Arm (Rear) .....	1
4	1493336	Connector.....	2
5	1598290	Sliding Window (Rear).....	1
6	1598295	Wiper Motor (Rear).....	1
7	1598300	Bolt .....	2
8	1393541	Guard .....	2
9	1393488	Block.....	2
10	1493308	Bolt .....	4
11	1598210	Bracket .....	4
12	1598211	Washer .....	4
13	1468317	Washer .....	4
14	1468316	Washer .....	4
15	1468315	Washer .....	4
16	1468314	Screw .....	4
17	1598294	Wiper Motor (Front) .....	1
18	1598298	Wiper Arm (Front).....	1
19	1598299	Wiper Blade (Front) .....	1
20	1598209	Screen (Front) .....	1
21	1581657	Seal .....	AR
22	302019	Screw .....	2
23	1598291	Screw .....	2
24	1558052	Washer .....	2
25	1598302	Spacer .....	2
26	1598301	Bushing .....	4

## CAB (Figure 1-11) INTERIOR PANELS

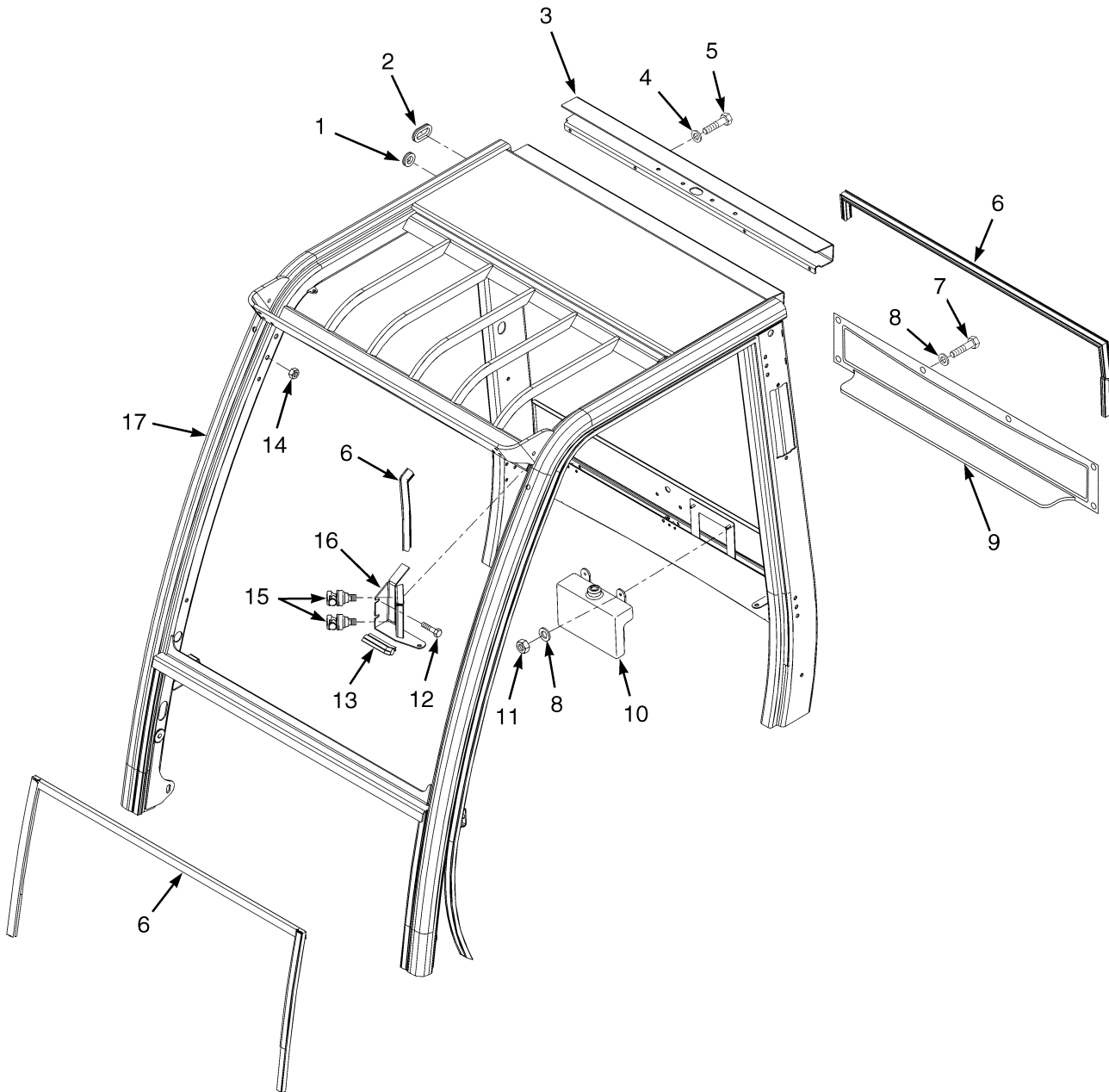


HP120860

**CAB  
INTERIOR PANELS**

ITEM	PART NO.	DESCRIPTION	QTY
	1519232	Cab Assembly.....	1
1	1571628	Cover (Radio) .....	1
2	1468320	Screw .....	8
3	1598420	Nut.....	8
4	1598421	Cover (Speakers) .....	2
5	1468319	Screw .....	2
6	1393527	Bulb .....	1
7	1393528	Dome Light.....	1
8	1493308	Bolt .....	4
9	1598422	Console (Radio) .....	1
10	1598423	Screw .....	2
11	1393458	Hanger.....	1
12	1468319	Screw .....	6
13	1598424	Support (RH).....	1
14	1598425	Support (LH).....	1
15	1598426	Nut.....	4
16	320158	Washer .....	4
17	1598427	Screw .....	4
18	1598428	Cover (Radiator).....	1

## CAB (Figure 1-12) FRAME AND ATTACHING PARTS



BP120158

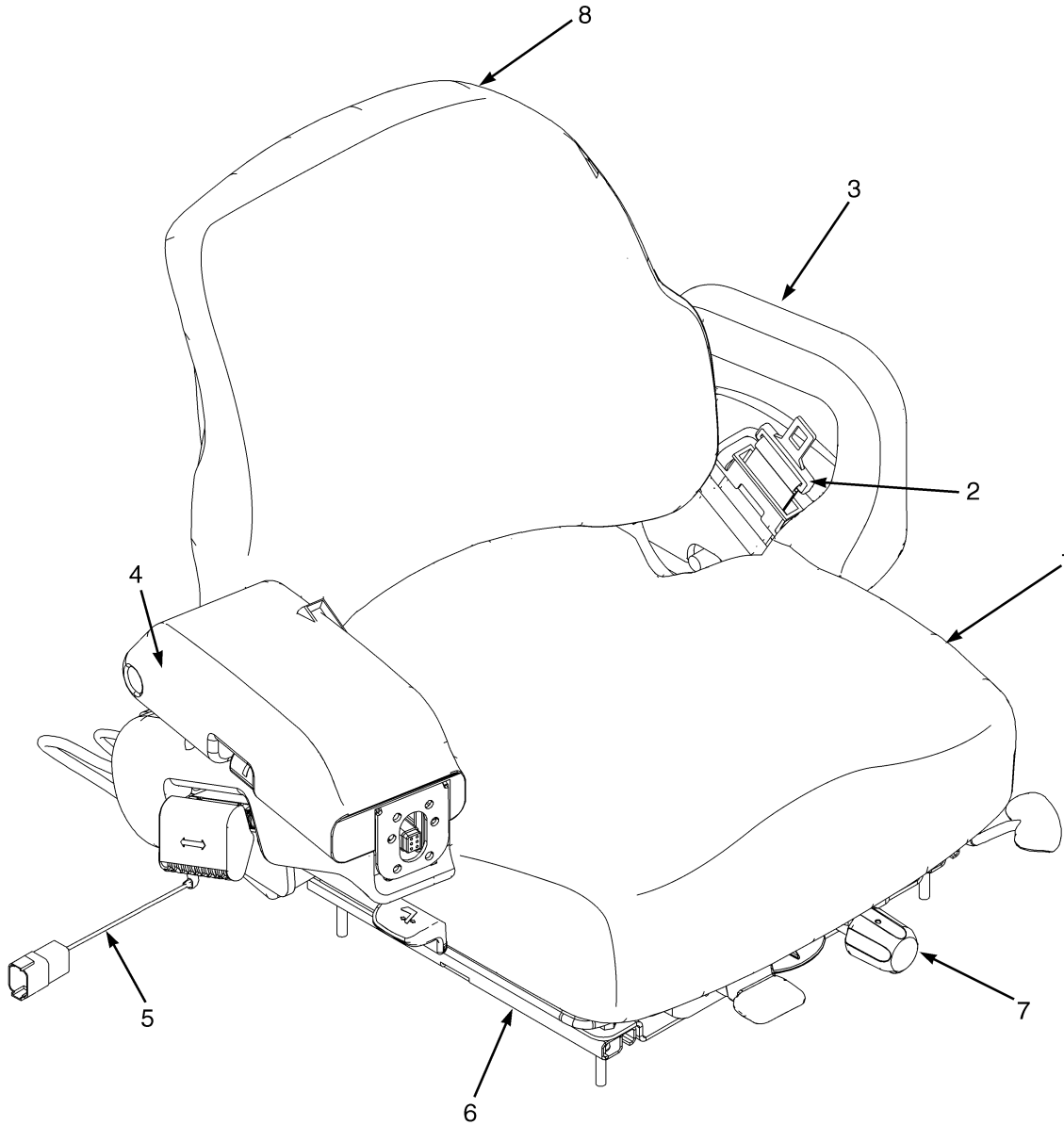
## CAB FRAME AND ATTACHING PARTS

ITEM	PART NO.	DESCRIPTION	QTY
	1519232	Cab Assembly.....	1
1	1579116	Grommet .....	3
2	1598332	Grommet .....	2
3	1598321	Cover (Cable) .....	1
4	320158	Washer .....	4
5	136681	Capscrew .....	4
6	1515337	Seal .....	AR
7	1571775	Screw .....	5
8	320156	Washer .....	7
9	1598668	Cover (Rear).....	1
10	1598329	Water Tank .....	1
11	136687	Nut.....	2
12	1598323	Screw .....	2
13	1393539	Seal .....	AR
14	1468308	Nut.....	6
15	1598327	Connector.....	2
16	1598325	Bracket .....	1
17	<b>a</b> . . . . .	Frame 2 .....	1

**FOOTNOTES:**

**a** Not Serviced Separately

## SEAT (Figure 1-13) FULL SUSPENSION WITH AND WITHOUT ELECTRONIC CONTROLS



HP120887

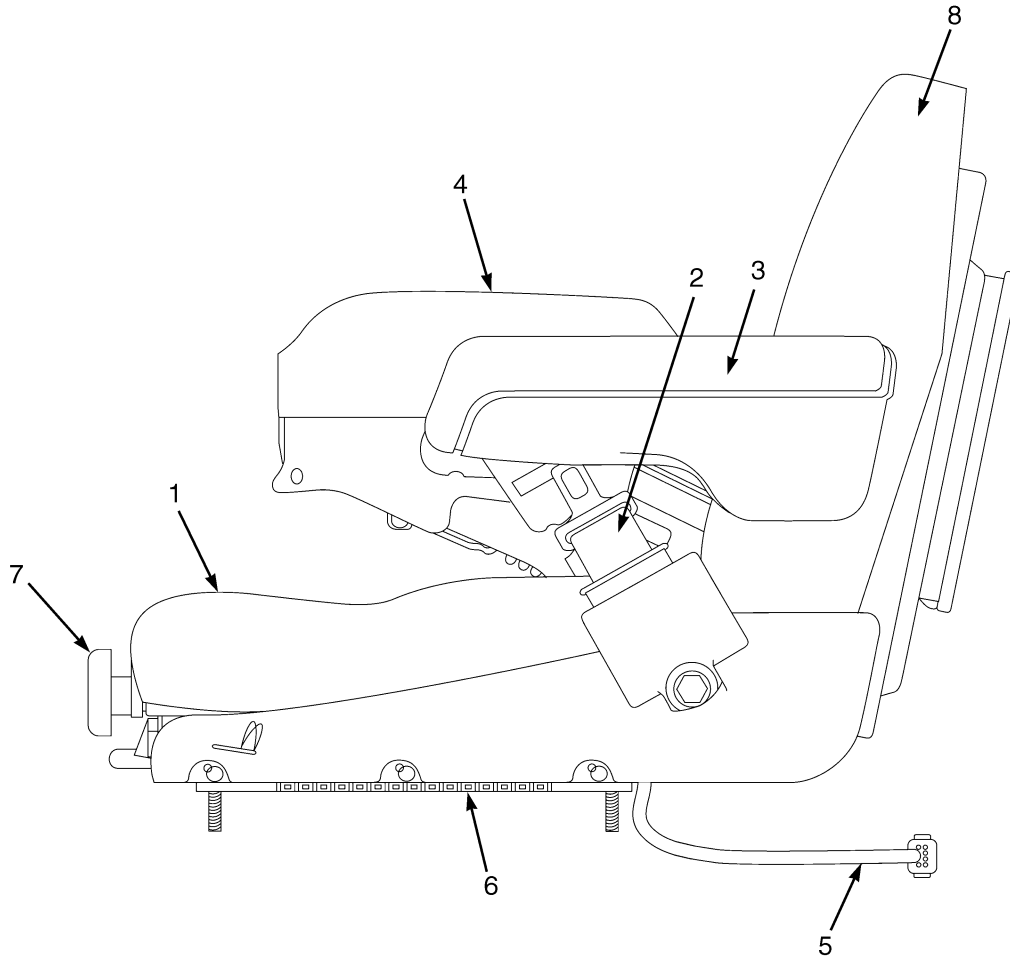
**SEAT  
FULL SUSPENSION  
WITH AND WITHOUT ELECTRONIC CONTROLS**

**KEY:****A: Full Suspension (Vinyl)****B: Full Suspension (Cloth)****C: Full Suspension (Vinyl with Electronic Control Arm)****D: Full Suspension (Cloth with Electronic Control Arm)**

ITEM	PART NO.	DESCRIPTION	QTY			
			A	B	C	D
	1593413	Full Suspension Seat (Vinyl).....	1	..	..	..
	1593414	Full Suspension Seat (Cloth).....	..	1	..	..
	1593417	Full Suspension Seat (Vinyl).....	..	..	1	..
	1593418	Full Suspension Seat (Cloth).....	..	..	..	1
1	1563207	Seat Cushion.....	1	..	1	..
1	1566453	Seat Cushion.....	..	1	..	1
2	1598504	Seat Belt Kit.....	1	1	1	1
3	1563230	Arm Cushion (LH) .....	1	1	1	1
4	1563231	Arm Cushion (RH).....	1	1	..	..
5	2075429	Wire Harness .....	1	1	..	..
5	2075428	Wire Harness .....	..	..	1	1
6	1470161	Slide Kit .....	1	1	1	1
7	1470163	Weight Adjuster Kit.....	1	1	1	1
8	1470152	Back Cushion .....	1	..	1	..
8	1470153	Back Cushion .....	..	1	..	1
	<b>a</b> 1563208	Sensor .....	1	1	1	1
	<b>a</b> 1483828	Shock Kit .....	1	1	1	1
	<b>a</b> 1563210	Foam Cap (Electronic Control Arm) .....	..	..	1	1
	<b>a</b> 1563211	Knobs (Electronic Control Arm).....	..	..	1	1

**FOOTNOTES:****a** Not Illustrated

## SEAT (Figure 1-14) SEMI-SUSPENSION WITH AND WITHOUT ELECTRONIC CONTROLS



HP120890

## SEAT SEMI-SUSPENSION WITH AND WITHOUT ELECTRONIC CONTROLS

**KEY:**

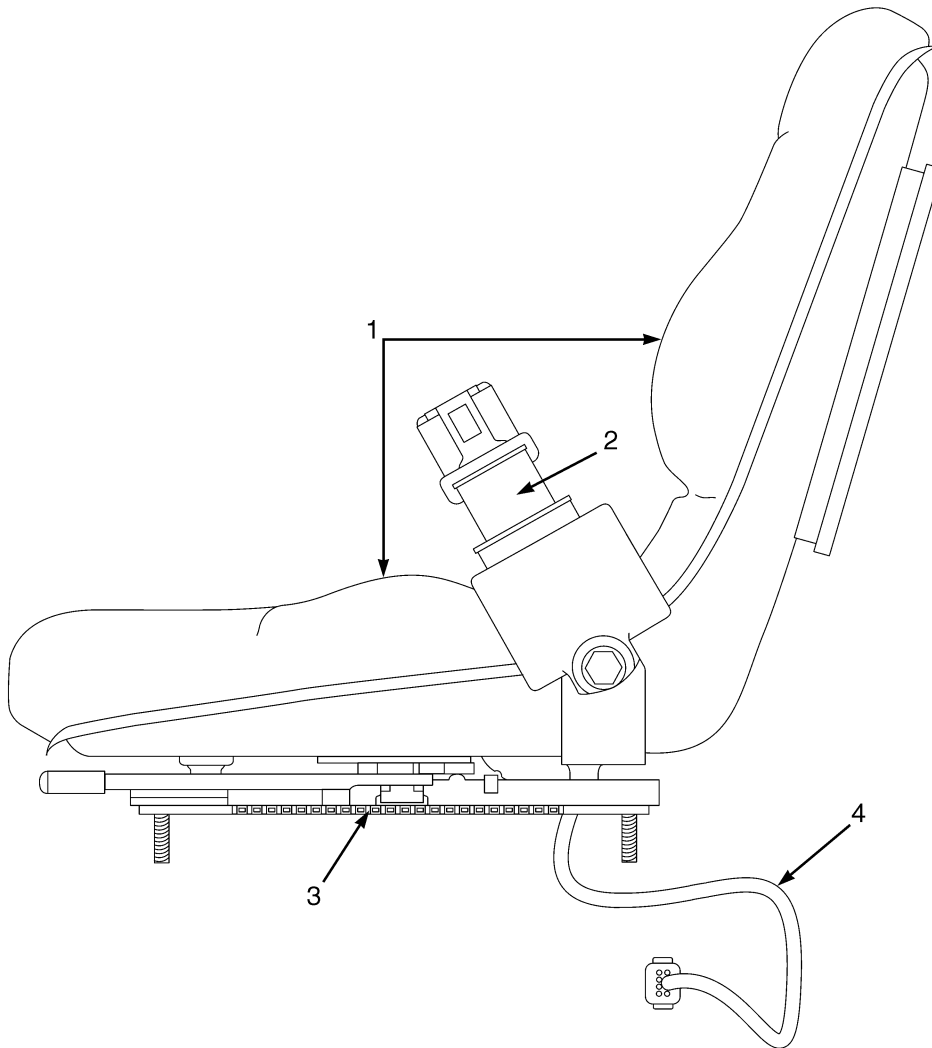
- A: Semi-Suspension (Vinyl)**  
**B: Semi-Suspension (Cloth)**  
**C: Semi-Suspension (Vinyl with Electronic Control Arm)**  
**D: Semi-Suspension (Cloth with Electronic Control Arm)**

ITEM	PART NO.	DESCRIPTION	QTY			
			A	B	C	D
	1593411	Seat Assembly (Vinyl).....	1	..	..	..
	1593412	Seat Assembly (Cloth).....	..	1	..	..
	1593415	Seat Assembly (Vinyl).....	..	..	1	..
	1593416	Seat Assembly (Cloth).....	..	..	..	1
1	1382112	Seat Cushion (Vinyl).....	1	..	1	..
1	1382114	Seat Cushion (Cloth).....	..	1	..	1
2	1598504	Seat Belt Kit.....	1	1	1	1
3	1453882	Armrest (LH).....	1	1	1	1
4	1453883	Armrest (RH).....	1	1	..	..
5	2075428	Wire Harness .....	..	..	1	1
6	1459173	Slide Kit .....	1	1	1	1
7	1563227	Weight Adjust Knob.....	1	1	1	1
8	1382111	Back Cushion (Vinyl).....	1	..	1	..
8	1382113	Back Cushion (Cloth).....	..	1	..	1
	<b>a</b> 1563215	Sensor (Operator Presence).....	1	1	1	1
	<b>a</b> 1362049	Shock Absorber Kit.....	1	1	1	1
	<b>a</b> 1563210	Foam Cap (Electronic Control Arm).....	..	..	1	1
	<b>a</b> 1563211	Knobs (Electronic Control Arm).....	..	..	1	1

**FOOTNOTES:**

- a** Not Illustrated

## SEAT (Figure 1-15) NON-SUSPENSION WITHOUT ELECTRONIC CONTROLS



HP120889

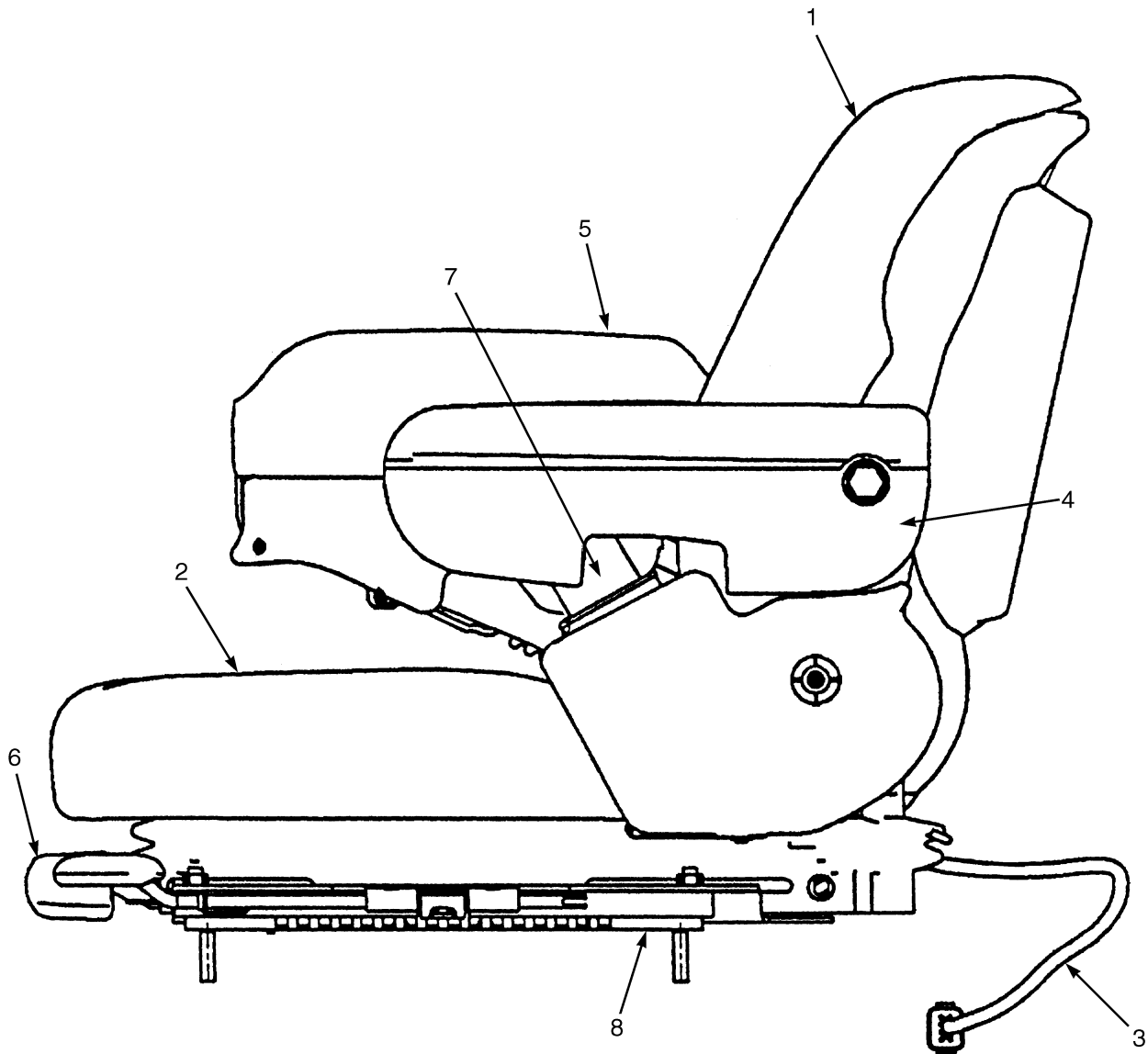
**SEAT  
NON-SUSPENSION  
WITHOUT ELECTRONIC CONTROLS**

ITEM	PART NO.	DESCRIPTION	QTY
	1593409	Non-Suspension Seat (Vinyl).....	1
1	1563351	Cushions (Vinyl) .....	1
2	1598504	Seat Belt Kit.....	1
3	1459173	Slide Kit .....	1
4	2075429	Wire Harness .....	1
	a 1563215	Sensor (Operator Presence) .....	1

**FOOTNOTES:**

a Not Illustrated

## SEAT (Figure 1-16) SWIVEL WITH AND WITHOUT ELECTRONIC CONTROLS



HP120891

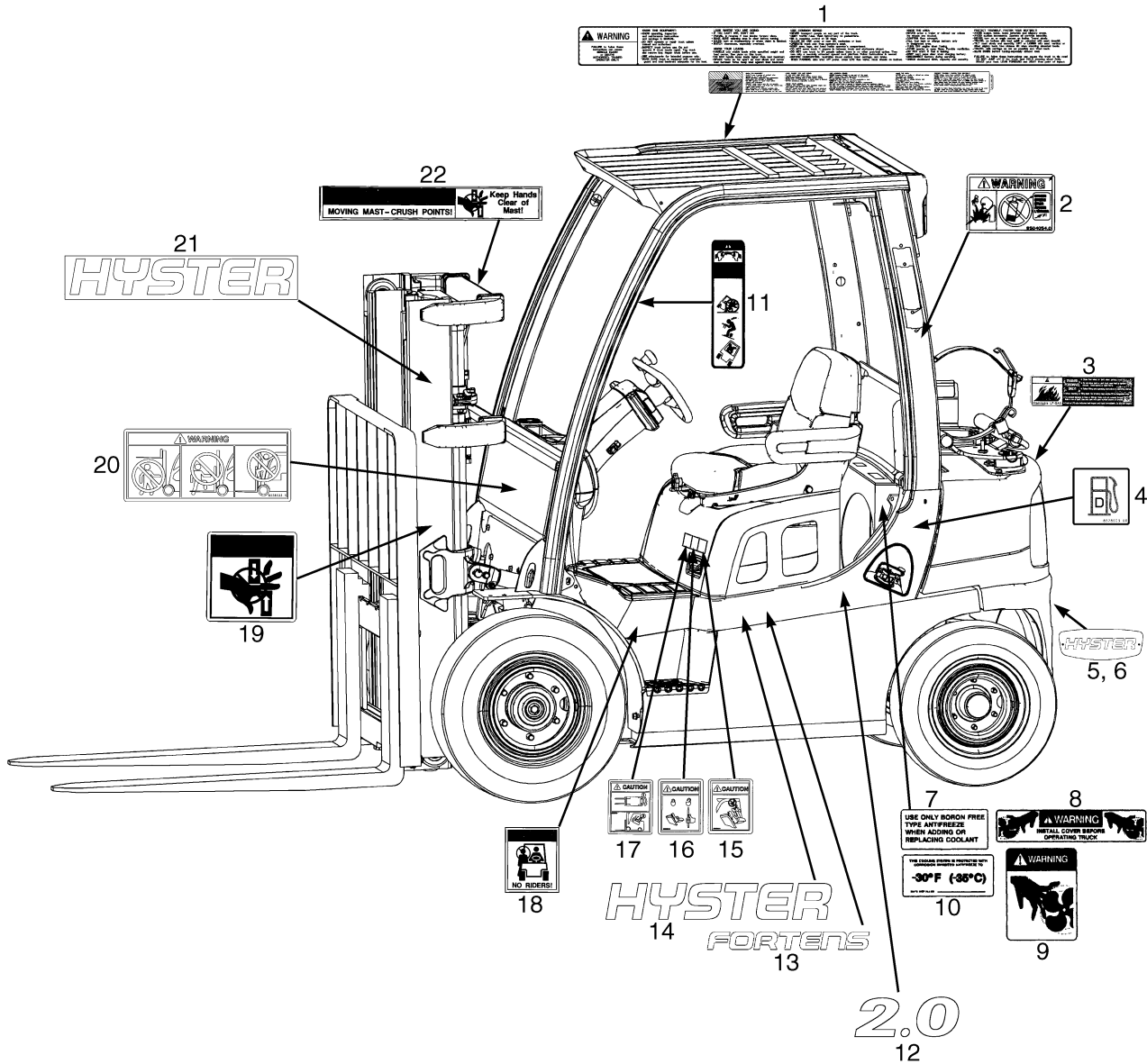
## SEAT SWIVEL WITH AND WITHOUT ELECTRONIC CONTROLS

**KEY:****A: Full Suspension (Vinyl)****B: Full Suspension (Cloth)****C: Full Suspension (Vinyl with Electronic Control Arm)****D: Full Suspension (Cloth with Electronic Control Arm)**

ITEM	PART NO.	DESCRIPTION	QTY			
			A	B	C	D
	1593421	Seat Assembly (Vinyl).....	1	..	..	..
	1593422	Seat Assembly (Cloth).....	..	1	..	..
	1593423	Seat Assembly (Vinyl).....	..	..	1	..
	1593424	Seat Assembly (Cloth).....	..	..	..	1
1	1470152	Back Cushion .....	1	..	1	..
1	1470153	Back Cushion .....	..	1	..	1
2	1563207	Seat Cushion.....	1	..	1	..
2	1566453	Seat Cushion.....	..	1	..	1
3	2075428	Wire Harness .....	..	..	1	1
3	2075429	Wire Harness .....	1	1	..	..
4	1563230	Arm Cushion (LH) .....	1	1	1	1
5	1563231	Arm Cushion (RH).....	1	1	..	..
6	1470163	Weight Adjuster Kit.....	1	1	1	1
7	1598504	Seat Belt Kit.....	1	1	1	1
8	1470161	Slide Kit .....	1	1	1	1
9	<b>a</b> 1483828	Shock Kit .....	1	1	1	1
10	<b>a</b> 1563210	Foam Cap (Electronic Control Arm) .....	..	..	1	1
11	<b>a</b> 1563211	Knobs (Electronic Control Arm).....	..	..	1	1
12	<b>a</b> 1563208	Sensor .....	1	1	1	1

**FOOTNOTES:****a** Not Illustrated

## LABELS (Figure 1-17) EXTERIOR



HP120885

**LABELS  
EXTERIOR**

ITEM	PART NO.	DESCRIPTION	QTY
1	2073198	Label (Operator Warning) .....	1
2	<b>a</b> 2034460	Label (Ether Warning).....	1
3	1354172	Label (Flammable LPG).....	1
4	2074256	Label (Diesel Fuel Only) .....	1
5	1583609	Plate (Hyster Logo).....	1
6	1566951	Fastener.....	2
7	1375676	Label (Boron Free Anti-Freeze Only).....	1
8	1345926	Label (Fan Warning) .....	1
9	1300094	Label (Fan Warning) .....	2
10	1354165	Label (Anti-Freeze) .....	2
11	1359588	Label (Operator Restraint) .....	2
12	1598305	Label (Model 2.0).....	2
12	1598322	Label (Model 2.5).....	2
12	1598324	Label (Model 3.0).....	2
12	1598326	Label (Model 3.5).....	2
13	1601748	Label (Fortens) .....	2
14	1586440	Label (Hyster) .....	2
15	2074740	Label (Joystick Caution) .....	1
16	2075417	Label (Locking Gas Spring) .....	1
17	<b>c</b> 2075614	Label (Hood Opening Warning).....	1
17	<b>b</b> 2076171	Label (Swivel Seat Caution) .....	1
18	1339828	Label (No Riders) .....	2
19	1339832	Label (Pinch Point) .....	2
20	2075655	Label (Mast Warning) .....	2
21	1562353	Label (Hyster) .....	2
22	1343276	Label (Mast Warning) .....	1

**FOOTNOTES:**

- a** Diesel Only
- b** For Use With Swivel Seats Only
- c** LPG Only



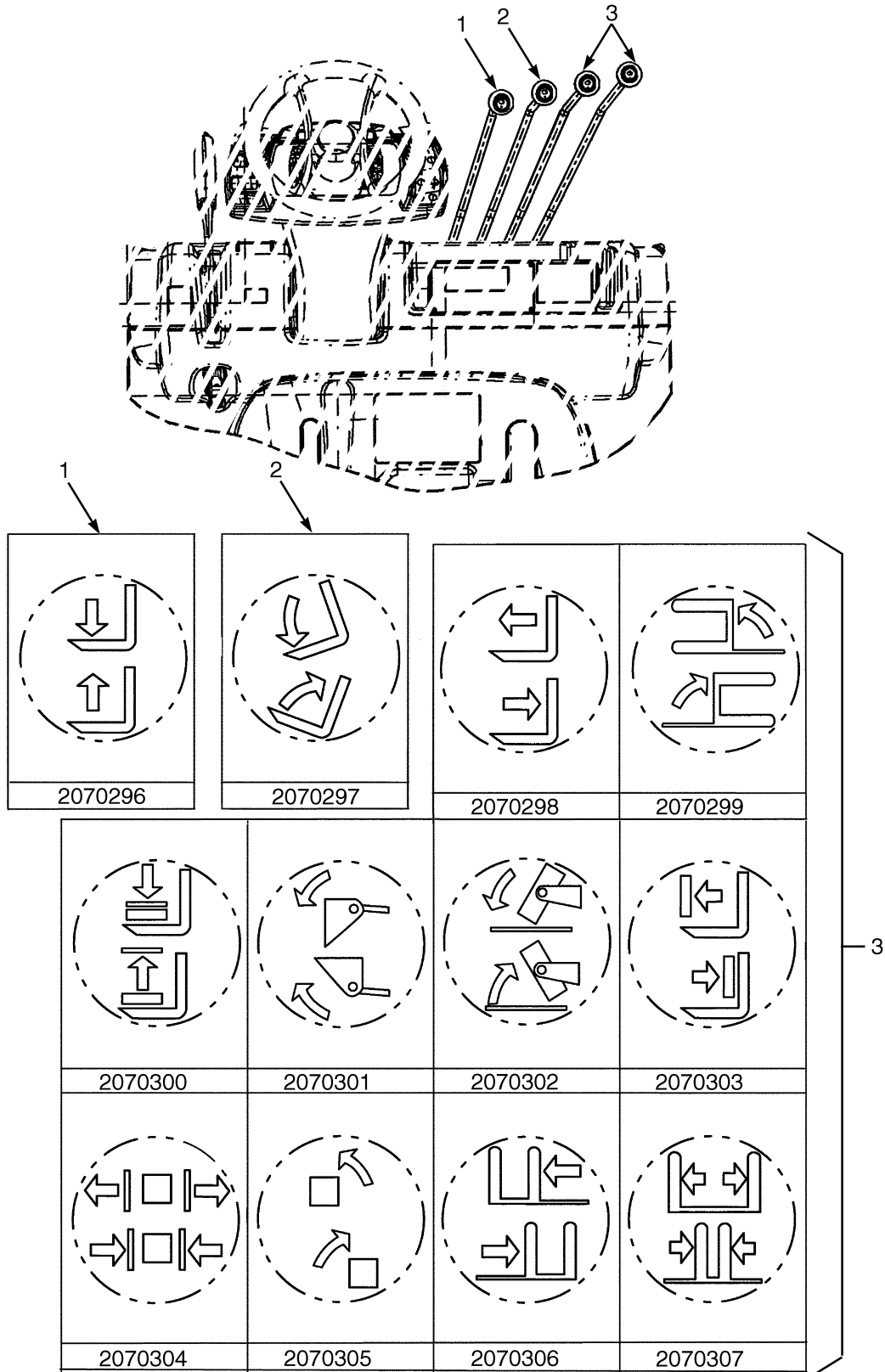
**LABELS  
INTERIOR**

ITEM	PART NO.	DESCRIPTION	QTY
1	<b>b</b> . . . . .	Nameplate .....	1
1	170658	Rivet.....	4
2	2074210	Label (Park Brake Warning).....	1
3	1365830	Label (Caution Soot Trap).....	1
4	1374549	Label (Radial Tire Warning).....	1
5	1534660	Label (Patents and Trademarks).....	1
6	1335138	Nameplate Tag .....	1
7	<b>a</b> 1589377	Label (Basic Powershift Transmission) .....	1
8	<b>c</b> 1589397	Label (DuraMatch Transmission) .....	1
9	1589437	Label (DuraMatch Plus2 Transmission) .....	1
10	1385102	Label (Drive Train Protection) .....	1
11	389688	Cover .....	1
12	1574147	Label (Incomplete Truck Nameplate).....	1

**FOOTNOTES:**

- a** Basic Transmission
- b** Contact Your Local Hyster Dealer
- c** Electric Transmission

## LABELS (Figure 1-19) CONTROL LEVER



HP120829

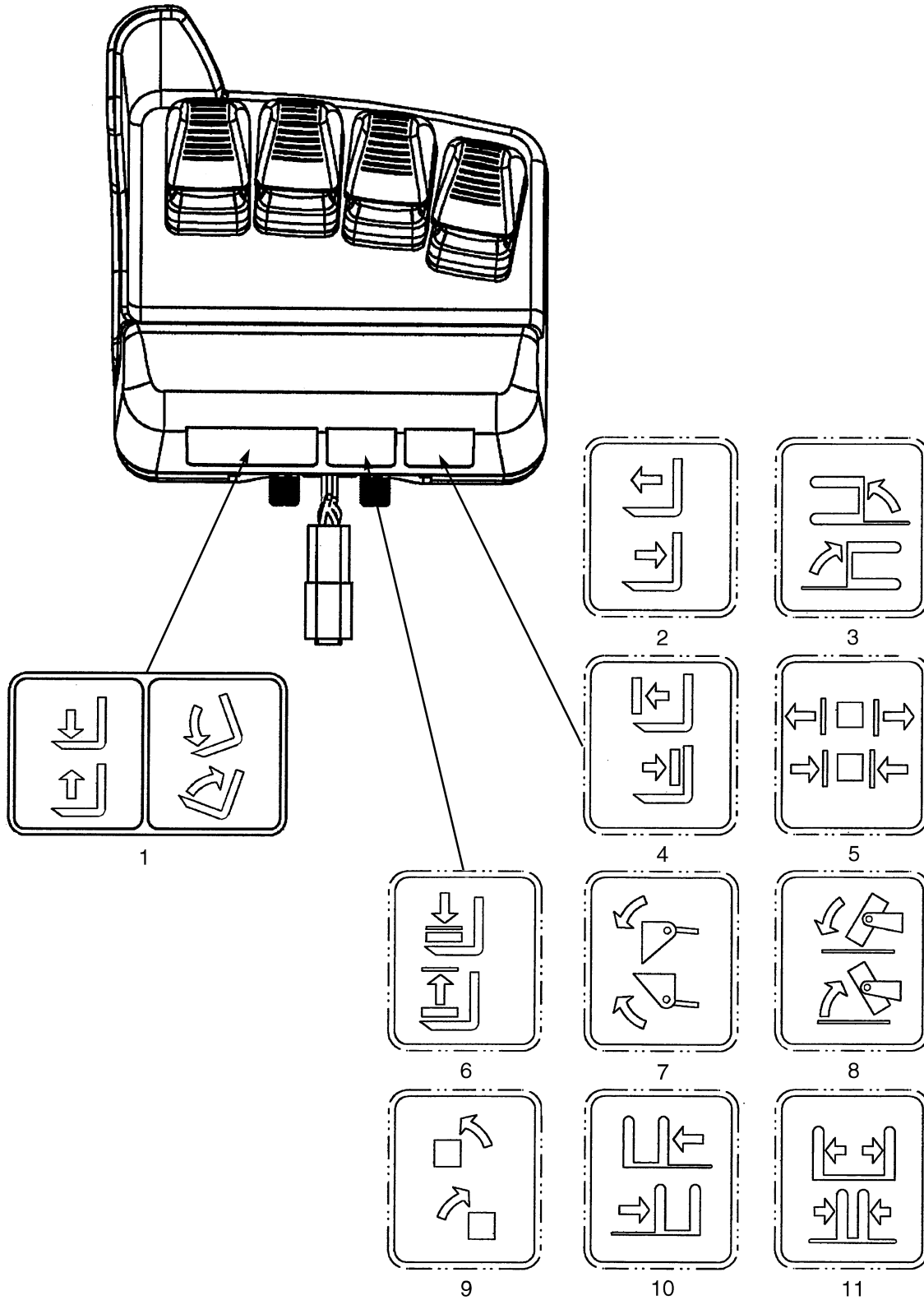
**LABELS**  
**CONTROL LEVER**

ITEM	PART NO.	DESCRIPTION	QTY
1	<b>b</b> 2070296	Lens (Lift).....	1
2	<b>b</b> 2070297	Lens (Tilt).....	1
3	<b>a</b> 2070298	Lens (Reach) .....	1
3	<b>a</b> 2070299	Lens (Swing).....	1
3	<b>a</b> 2070300	Lens (Load Stabilizer).....	1
3	<b>a</b> 2070301	Lens (Scoop) .....	1
3	<b>a</b> 2070302	Lens (Upender).....	1
3	<b>a</b> 2070303	Lens (Push/Pull) .....	1
3	<b>a</b> 2070304	Lens (Clamp) .....	1
3	<b>a</b> 2070305	Lens (Rotate).....	1
3	<b>a</b> 2070306	Lens (Side-Shift).....	1
3	<b>a</b> 2070307	Lens (Fork Spread).....	1

**FOOTNOTES:**

- a** Optional Function
- b** Standard Function

## LABELS (Figure 1-20) ELECTRONIC LEVER

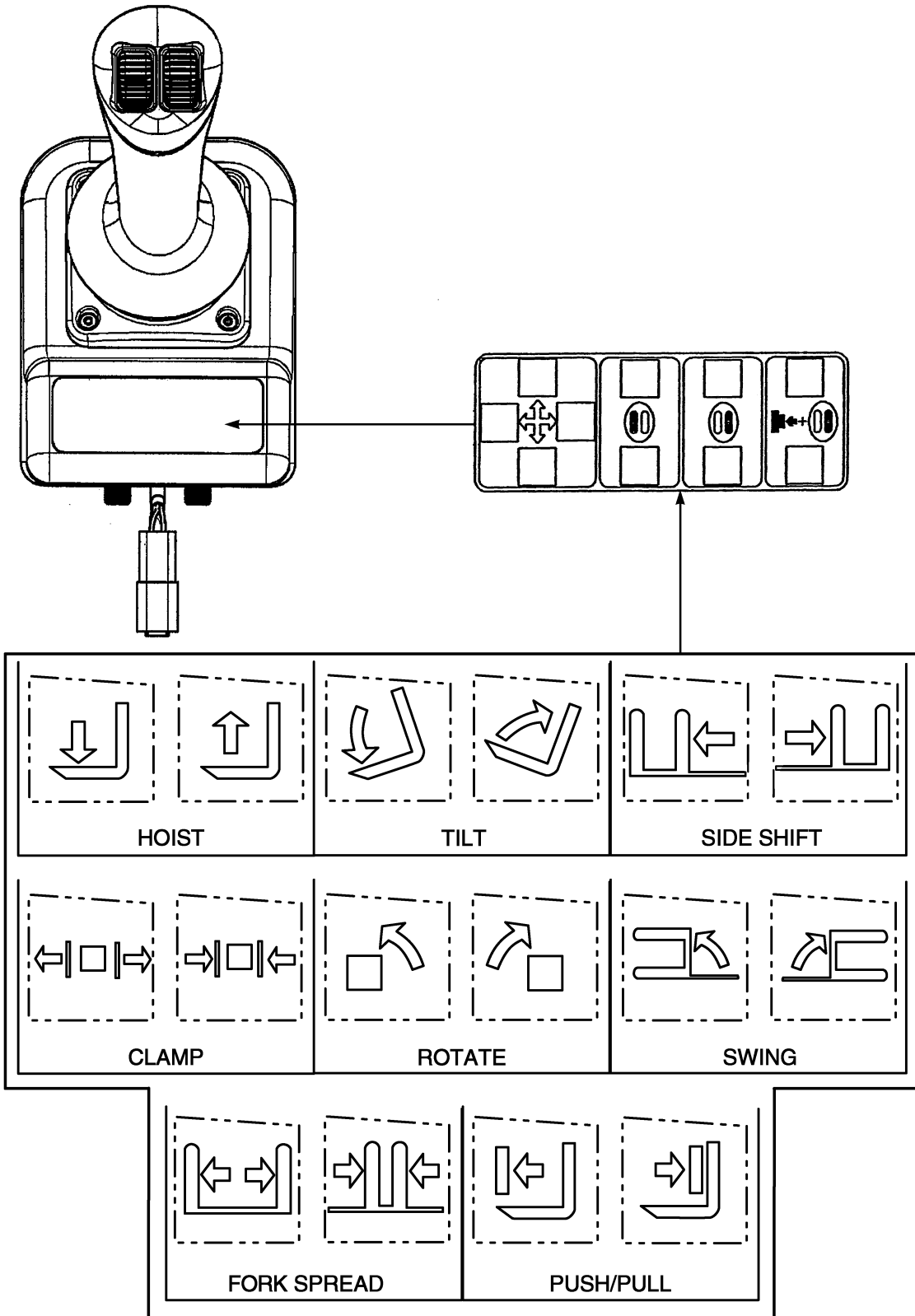


YP120188

**LABELS  
ELECTRONIC LEVER**

ITEM	PART NO.	DESCRIPTION	QTY
1	1581055	Label (Hoist and Tilt) .....	1
2	2073115	Label (Reach) .....	1
3	2073114	Label (Swing).....	1
4	2073116	Label (Load Stabilizer).....	1
5	2073117	Label (Scoop) .....	1
6	2073119	Label (Uponder).....	1
7	2073118	Label (Push/Pull) .....	1
8	2073120	Label (Clamp) .....	1
9	2073121	Label (Rotate).....	1
10	2073122	Label (Side-Shift).....	1
11	2073123	Label (Fork Spread).....	1

## LABELS (Figure 1-21) JOYSTICK

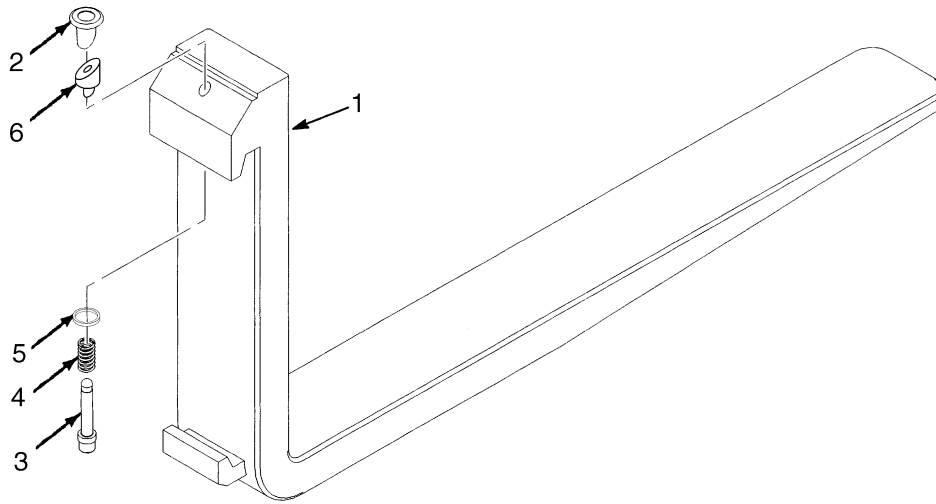


YP120187

**LABELS  
JOYSTICK**

ITEM	PART NO.	DESCRIPTION	QTY
	2070481	Label Set (Hoist and Tilt) .....	1
	2070482	Label Set (Hoist and Tilt, Side-Shift) .....	1
	2074989	Label Set (Hoist and Tilt, Fork Spread) .....	1
	2070483	Label Set (Hoist and Tilt, Side-Shift, Fork Spread).....	1
	2070484	Label Set (Hoist and Tilt, Side-Shift, Push/Pull) .....	1
	2070486	Label Set (Hoist and Tilt, Clamp).....	1
	2070487	Label Set (Hoist and Tilt, Side-Shift, Clamp) .....	1
	2070488	Label Set (Hoist and Tilt, Side-Shift, Rotate).....	1
	2070489	Label Set (Hoist and Tilt, Side-Shift, Rotate, Clamp).....	1
	2070491	Label Set (Hoist and Tilt, Rotate, Clamp) .....	1
	2070495	Label Set (Hoist and Tilt, Swing, Clamp).....	1
	2070496	Label Set (Hoist and Tilt, Swing, Rotate, Clamp) .....	1

## FORKS (Figure 1-22)



BP290003

**KEY:**

**A: Standard Class II (100 mm x 40 mm)**

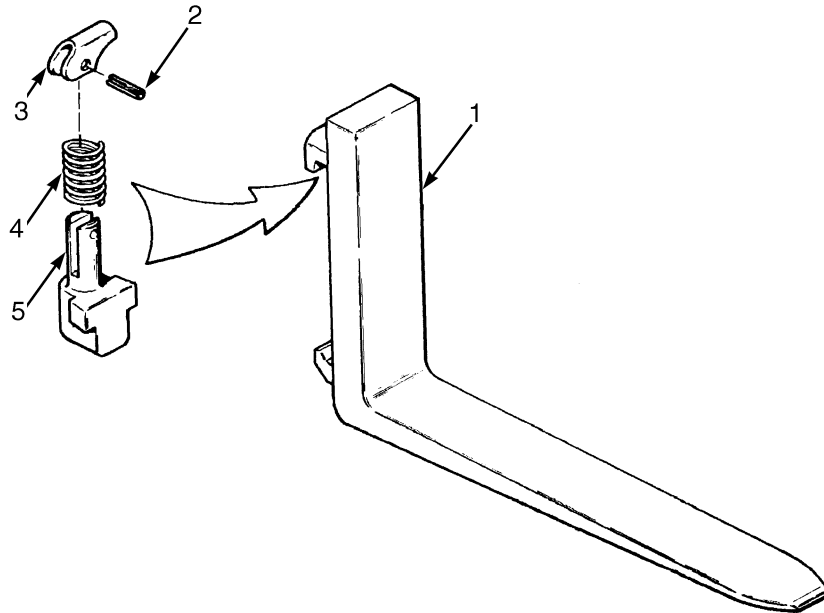
**B: Standard Class III (125 mm x 50 mm)**

ITEM	PART NO.	DESCRIPTION	QTY	
			A	B
1	1333043	Fork (1000 mm) .....	2	..
1	1333044	Fork (1100 mm) .....	2	..
1	1333045	Fork (1200 mm) .....	2	..
1	1338140	Fork (1000 mm) .....	..	2
1	1338142	Fork (1100 mm) .....	..	2
1	1338144	Fork (1200 mm) .....	..	2
2	1523732	Knob .....	1	1
3	1523733	Pin .....	1	..
3	1523737	Pin .....	..	1
4	1500782	Spring .....	1	..
4	1500784	Spring .....	..	1
5	<b>a</b> 1477166	Washer .....	1	1
6	<b>a</b> 1477167	Wedge .....	1	..
6	1477237	Wedge .....	..	1
	1523734	Retainer Pin (Not Illustrated) .....	1	1
	1523735	Latch Kit (Class II) (Includes Items 2-6) .....	2	..
	1523739	Latch Kit (Class III) (Includes Items 2-6) .....	..	2

**FOOTNOTES:**

**a** Refer to Latch Kit Installation Instructions

**FORKS (Figure 1-23)  
OPTIONAL**



HP120793

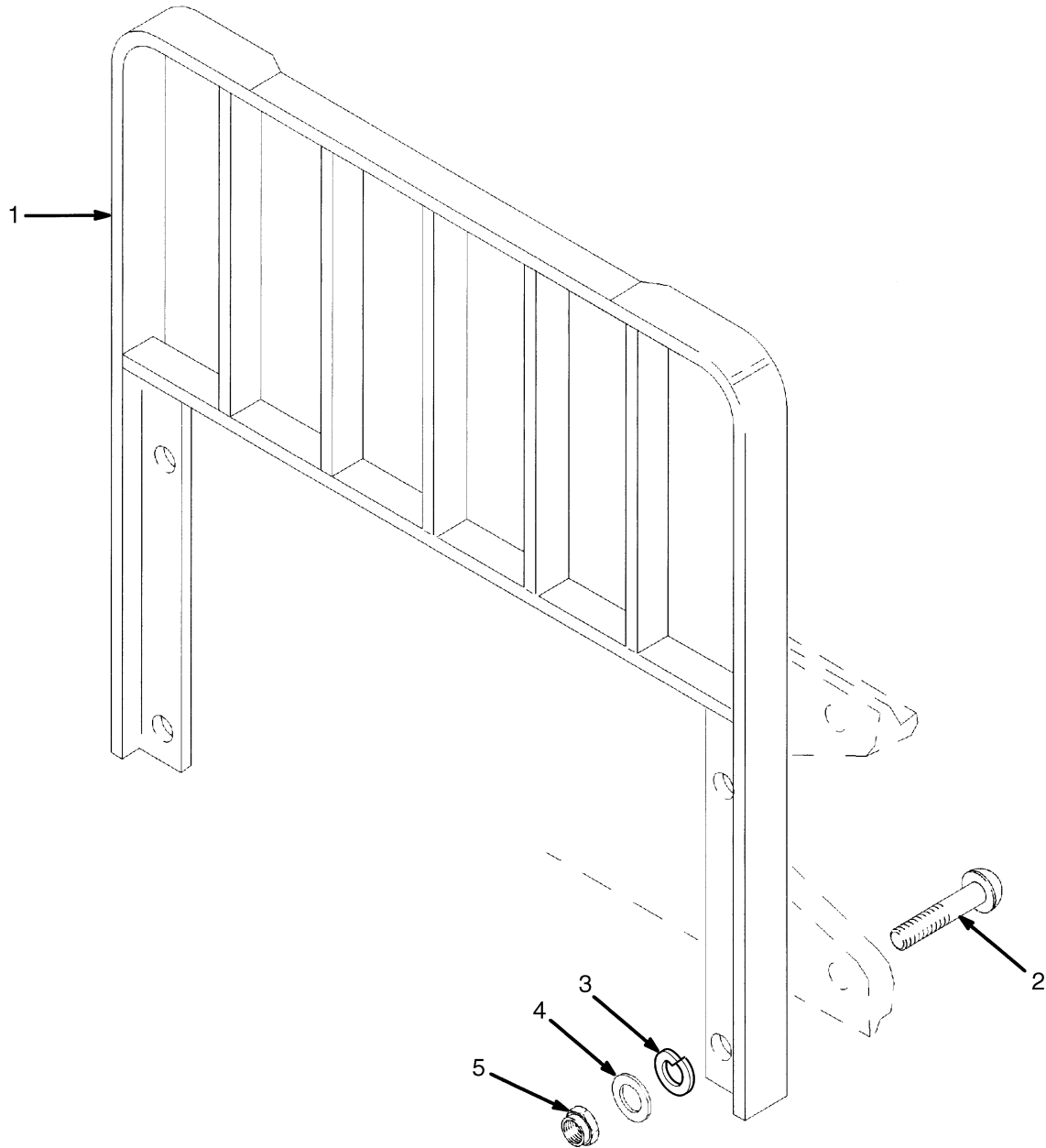
**KEY:**

**A:** 100 mm x 40 mm (4 in. x 1.5 in.) Standard Taper (H2.0-2.5FT)

**B:** 125mm x 50mm (5 in. x 2 in.) Standard Taper (H3.0-3.5FT)

ITEM	PART NO.	DESCRIPTION	QTY	
			A	B
1	1378787	Fork (1016 mm) .....	2	..
1	1378796	Fork (1194 mm) .....	2	..
1	1378791	Fork (1524 mm) .....	2	..
1	1378793	Fork (991 mm) .....	2	..
1	1378794	Fork (1092 mm) .....	2	..
1	1378726	Fork (991 mm) .....	..	2
1	1378727	Fork (1092 mm) .....	..	2
1	1378728	Fork (1194 mm) .....	..	2
2	302450	Pin .....	1	1
3	1378763	Latch .....	1	1
4	1378762	Spring .....	1	1
5	1378760	Pin .....	1	..
5	1378761	Pin .....	..	1
	1378765	Latch Kit (Class II) (Includes Items 2-5) .....	1	..
	1378766	Latch Kit (Class III) (Includes Items 2-5) .....	..	1

## LOAD BACK REST EXTENSION (Figure 1-24)



HP120836

**LOAD BACK REST EXTENSION**

**KEY:**

**A: For Use With Standard Carriage Only**

**B: For Use With Integral Side-Shift Carriage Only**

ITEM	PART NO.	DESCRIPTION	QTY	
			A	B
1	1365778	Load Backrest Extension (1219 mm) (Class III) .....	1	1
1	1338645	Load Backrest Extension (1067 mm) (Class III) .....	1	1
1	1338642	Load Backrest Extension (1067 mm) (Class II) .....	1	..
1	1376338	Load Backrest Extension (1219 mm) (Class II) .....	1	..
1	1338642	Load Backrest Extension (1067 mm) (Class II) .....	..	1
1	1376338	Load Backrest Extension (1219 mm) (Class II) .....	..	1
2	2034347	Capscrew.....	..	4
2	<b>a</b> 1343990	Capscrew.....	4	4
2	<b>b</b> 1354923	Capscrew.....	4	4
3	296423	Washer .....	4	4
4	221771	Washer .....	4	4
5	300937	Locknut .....	4	4

**FOOTNOTES:**

**a** For Use On 42" Class III, 42" Class II Standard Carriage, And 48" Class II Standard Carriage Only

**b** For Use On 48" Class III Only