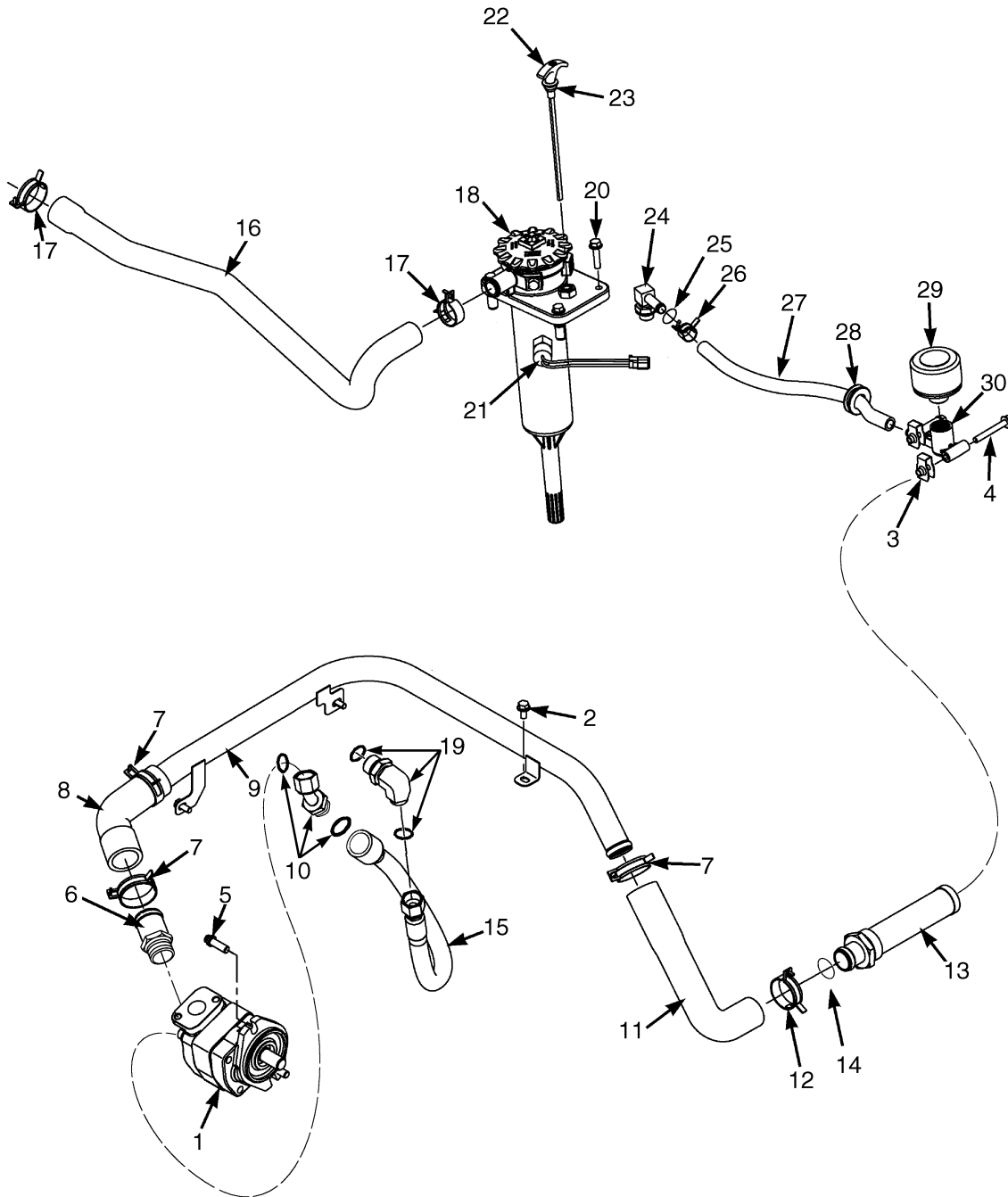


HYDRAULIC SUPPLY AND RETURN (Figure 9-1)



HP150973

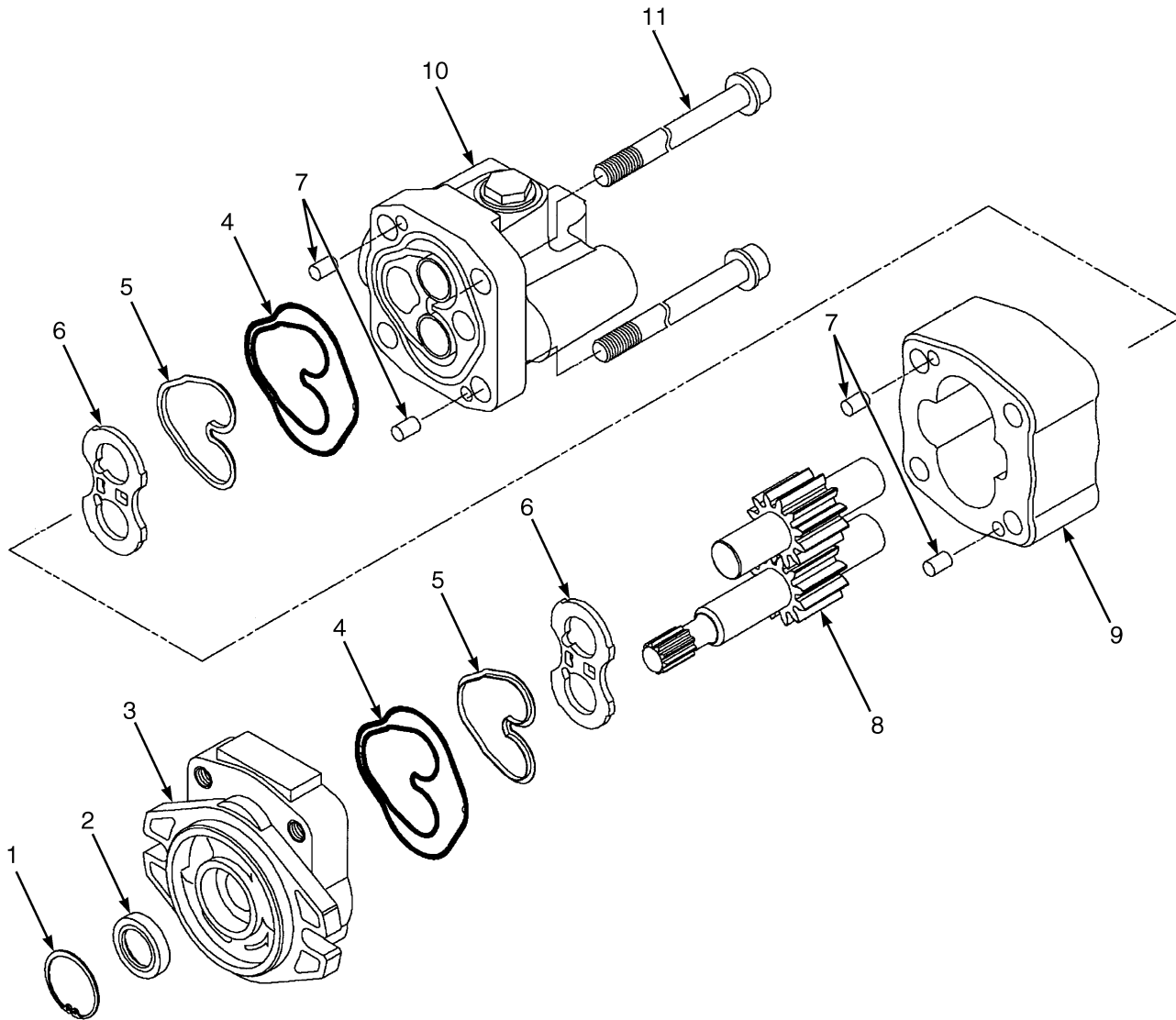
HYDRAULIC SUPPLY AND RETURN

ITEM	PART NO.	DESCRIPTION	QTY
1	a 2067802	Gear Pump (☞ Figure 9-2)	1
1	a 2067803	Gear Pump (☞ Figure 9-2)	1
1	b 2067800	Gear Pump (☞ Figure 9-2)	1
1	b 2067801	Gear Pump (☞ Figure 9-2)	1
1	c 2074230	Gear Pump (☞ Figure 9-2)	1
1	c 2074211	Gear Pump (☞ Figure 9-2)	1
2	1527879	Capscrew.....	3
3	1393879	Clip Nut.....	2
4	1510116	Capscrew.....	2
5	1564515	Capscrew.....	2
6	1568199	Adapter	1
7	1501992	Clamp	3
8	2069005	Hose	1
9	2068947	Tube	1
10	1528596	Fitting.....	1
10	16485	O-Ring	1
10	252729	O-Ring	1
11	2061778	Hose	1
12	1527982	Clamp	1
13	1526186	Strainer	1
14	16984	O-Ring	1
15	2070114	Hose	1
16	2076408	Hose	1
17	369804	Clamp	2
18	1544975	Filter Assembly (☞ Figure 9-3)	1
19	1487069	Fitting.....	1
19	252729	O-Ring	1
19	16486	O-Ring	1
20	1586627	Capscrew.....	4
21	2068337	Pressure Switch.....	1
22	2060751	Dipstick	1
23	1580682	O-Ring	1
24	222510	Fitting.....	1
25	16484	O-Ring	1
26	1502007	Clamp	1
27	127918	Hose	1
28	1527395	Grommet.....	1
29	1582161	Breather.....	1
30	1582160	Adapter	1

FOOTNOTES:

- a For Use With GM Engines
- b For Use With Mazda Engines
- c For Use With Yanmar Diesel Engines

GEAR PUMP (Figure 9-2)



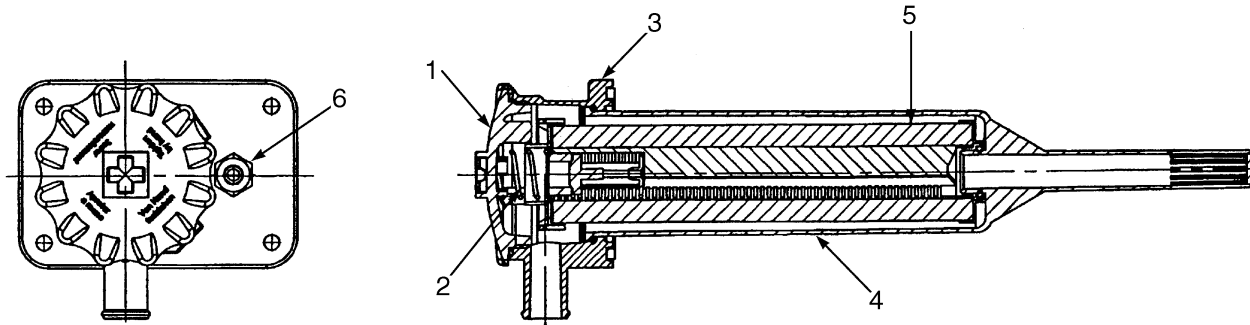
BP150098

GEAR PUMP**KEY:****A: Mazda****B: GM****C: Yanmar**

ITEM	PART NO.	DESCRIPTION	QTY		
			A	B	C
	a 2067801	Gear Pump	1
	b 2067800	Gear Pump	1
	a 2074211	Gear Pump	1	..
	b 2074230	Gear Pump	1	..
	a 2067803	Gear Pump	1
	b 2067802	Gear Pump	1
1	Snap Ring.....	1	1	1
2	Oil Seal.....	1	1	1
3	a 1578664	Flange Mounting.....	1	1	1
3	b 1581536	Flange Mounting.....	1	1	1
4	Back-Up Seal	2	2	2
5	Plate Seal	2	2	2
6	1578673	Side Plate	2	2	2
7	1578672	Dowel Pin	4	4	4
8	1581537	Gear Set	1
8	1584987	Gear Set	1	..
8	1581534	Gear Set	1
8	Drive Gear.....	1	1	1
8	Driven Gear.....	1	1	1
9	Gear Plate	1	1	1
10	a 1578665	Cover	1	1	1
10	b 1581535	Cover	1	1	1
11	1578671	Screw	4	4	..
11	1578693	Screw	4
	1465140	Seal Kit (Includes Items 1-2, 4-5)	1	1	1

FOOTNOTES:**a** High Pressure**b** Low Pressure

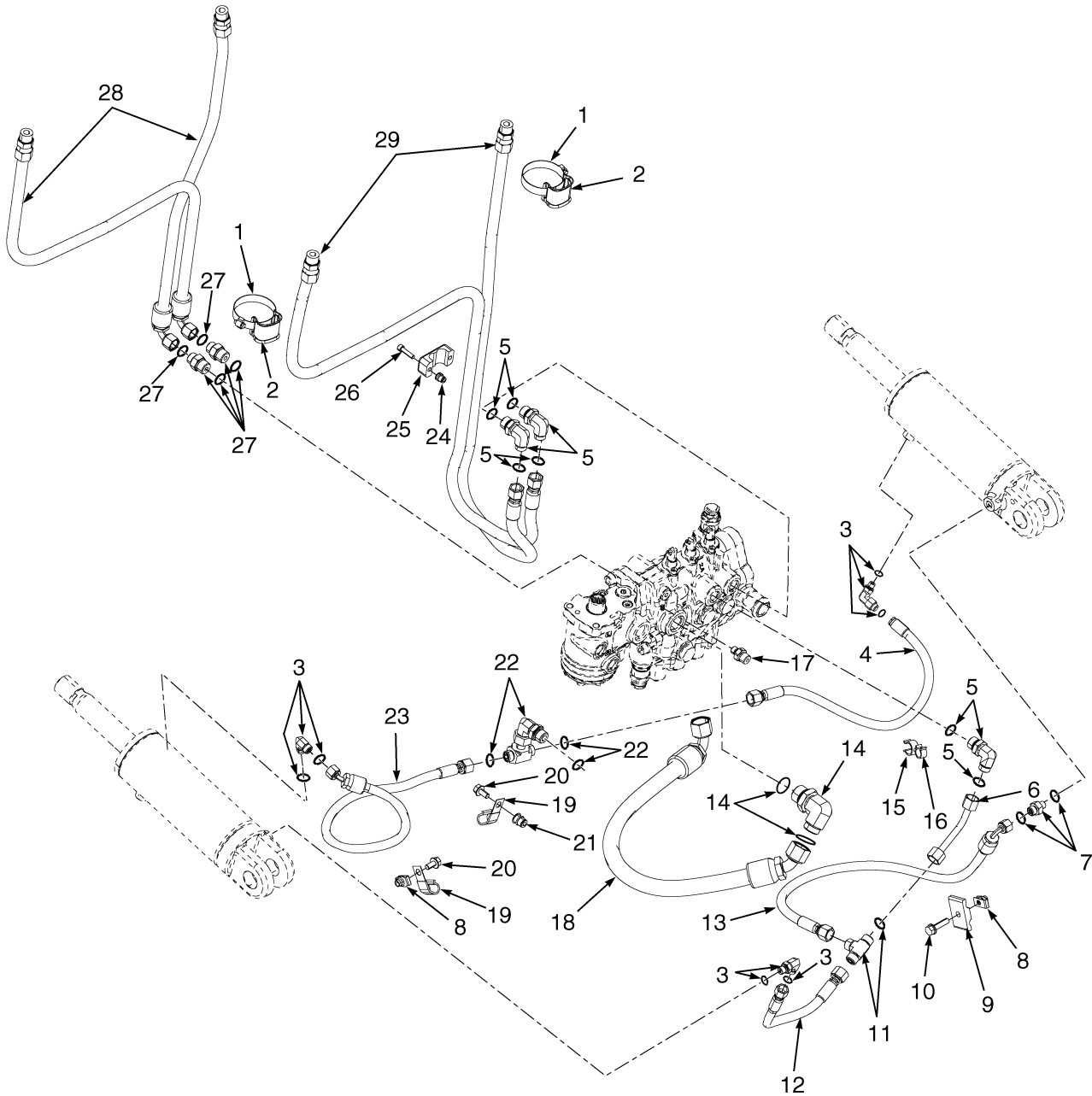
HYDRAULIC FILTER (Figure 9-3)



BP150095

ITEM	PART NO.	DESCRIPTION	QTY
	1544975	Filter Assembly	1
1	1570338	Filter Lid.....	1
1	Gasket.....	1
2	1570340	Spring.....	1
3	1570342	Filter Head.....	1
3	209457	Quad Ring.....	1
3	14591	Fitting	1
3	16481	O-Ring	1
4	1570346	Filter Canister.....	1
4	O-Ring.....	1
5	2070611	Element.....	1
5	O-Ring.....	1
6	1568182	Dipstick Assembly	1
6	O-Ring.....	1
	1570337	Seal Kit (Includes Items 1, 3-6)	1

HYDRAULIC HOSES (Figure 9-4) LIFT, TILT, AND AUXILIARY

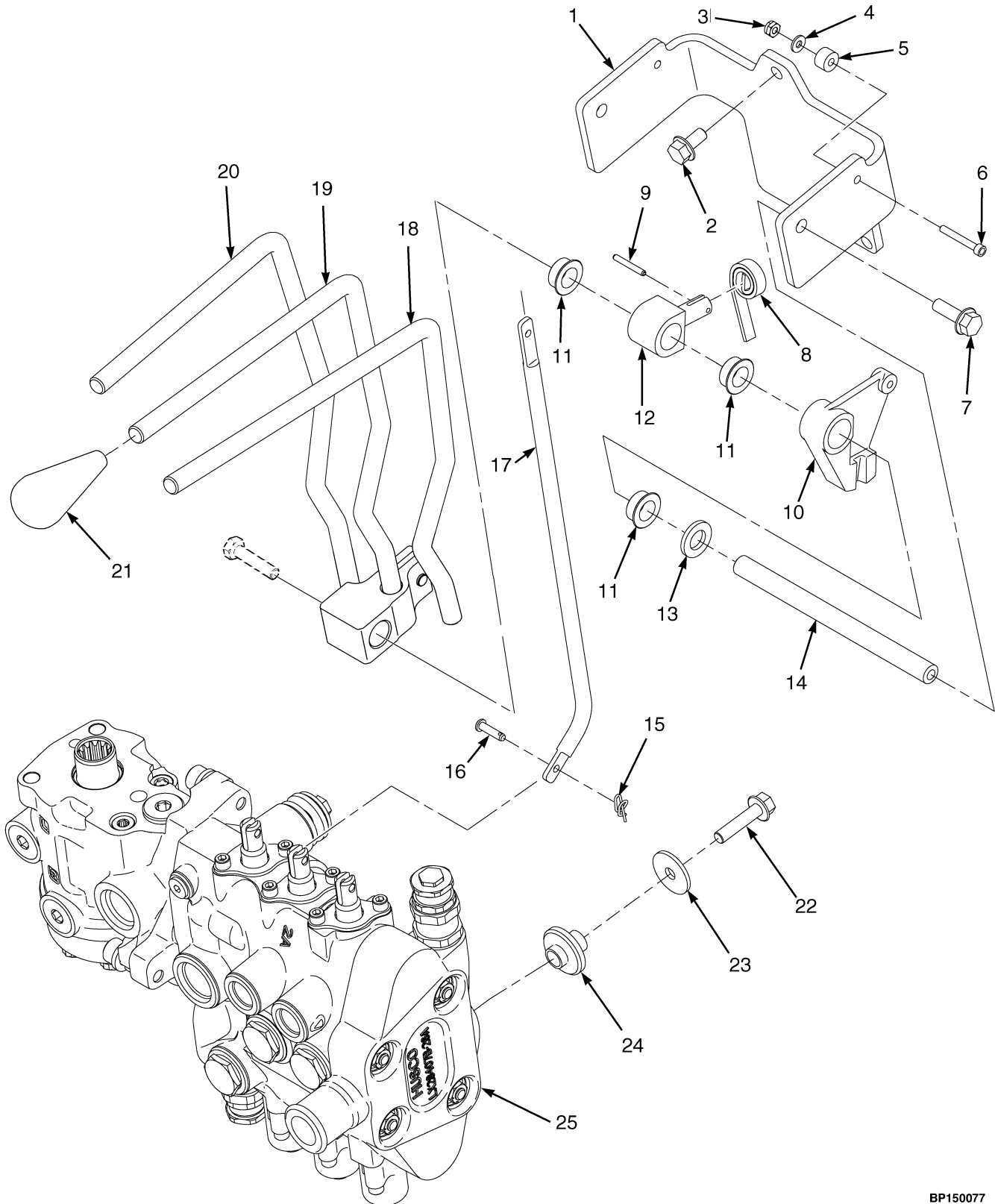


HP150984

**HYDRAULIC HOSES
LIFT, TILT, AND AUXILIARY****KEY:****A: Three Function****B: Four Function**

ITEM	PART NO.	DESCRIPTION	QTY	
			A	B
1	1481229	Clamp	2	2
2	1477996	Clamp	2	2
3	1487058	Fitting.....	3	3
3	1527813	O-Ring	3	3
3	16481	O-Ring	3	3
4	2075630	Hose	1	1
5	1487061	Fitting.....	3	3
5	265787	O-Ring	3	3
5	16484	O-Ring	3	3
6	2074327	Tube	1	1
7	1486737	Fitting.....	1	1
7	16481	O-Ring	1	1
7	1527813	O-Ring	1	1
8	1480237	Clip Nut.....	2	2
9	1359620	Clamp	1	1
10	1586627	Capscrew.....	1	1
11	1522425	Fitting.....	1	1
11	265787	O-Ring	1	1
12	2074326	Hose	1	1
13	2077092	Hose	1	1
14	1487069	Fitting.....	1	1
14	252729	O-Ring	1	1
14	16486	O-Ring	1	1
15	1502055	Clamp	1	1
16	1502059	Clamp	1	1
17	2061646	Fitting.....	1	1
18	2070148	Hose	1	1
19	325804	Clamp	2	2
20	1527879	Capscrew.....	2	2
21	1530243	Insert.....	1	1
22	1488464	Fitting.....	1	1
22	265787	O-Ring	3	3
23	2074325	Hose	1	1
24	1531558	Insert.....	2	..
25	1360386	Clamp	1	..
26	293796	Capscrew.....	2	..
27	1486742	Fitting.....	2	2
27	265787	O-Ring	2	2
27	16484	O-Ring	2	2
28	2065051	Hose	2	..
28	2065052	Hose	2
29	2073495	Hose	2	..
29	2073496	Hose	2

HAND LEVERS (Figure 9-5) THREE FUNCTION WITH DETENTED LEVERS

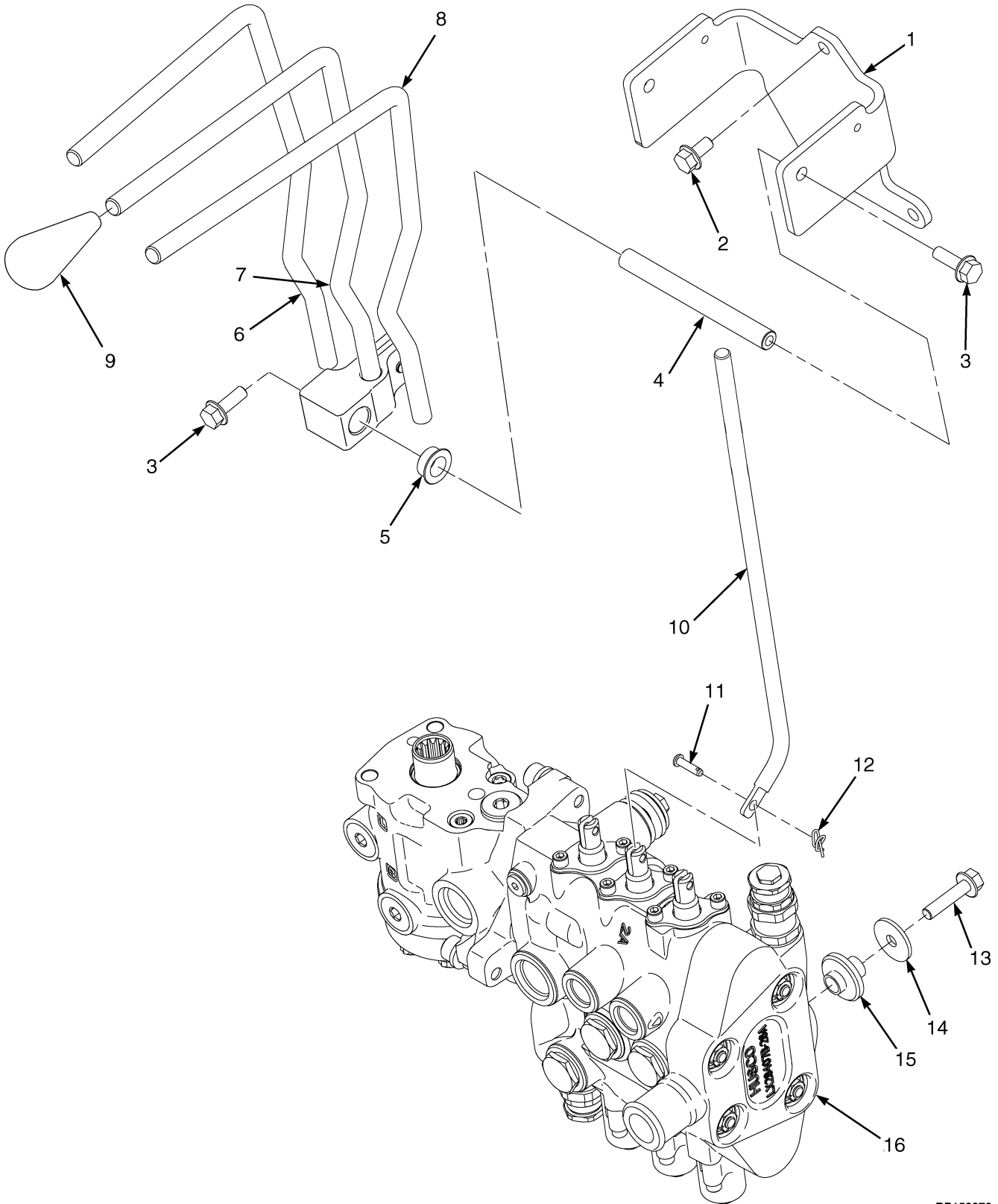


BP150077

**HAND LEVERS
THREE FUNCTION
WITH DETENTED LEVERS**

ITEM	PART NO.	DESCRIPTION	QTY
1	1561163	Bracket.....	1
2	1527879	Capscrew.....	3
3	230882	Nut.....	1
4	197067	Washer.....	2
5	1528339	Spacer.....	1
6	18094	Capscrew.....	1
7	1583611	Capscrew.....	2
8	175861	Spring.....	1
9	302428	Pin.....	1
10	1542546	Lever.....	2
11	1564747	Bushing.....	10
12	306113	Pin (Selector).....	1
13	320161	Washer.....	2
14	1528328	Pivot Shaft.....	1
15	1517361	Cotter Pin.....	6
16	309109	Rod End Pin.....	6
17	1517394	Link.....	3
18	1517379	Hand Lever (Auxiliary One And Two).....	1
19	1517357	Hand Lever (Tilt).....	1
20	1517356	Hand Lever (Lift).....	1
21	1517395	Knob.....	3
22	1586627	Capscrew.....	3
23	1346752	Washer.....	3
24	2063991	Isolator.....	3
25	2064895	Control Valve Assembly (Manual) (H2.0-3.0FT) (☞ Figure 9-9).....	1
25	2064899	Control Valve Assembly (Manual) (H3.5FT) (☞ Figure 9-9).....	1

HAND LEVERS (Figure 9-6) THREE FUNCTION WITHOUT DETENTED LEVERS

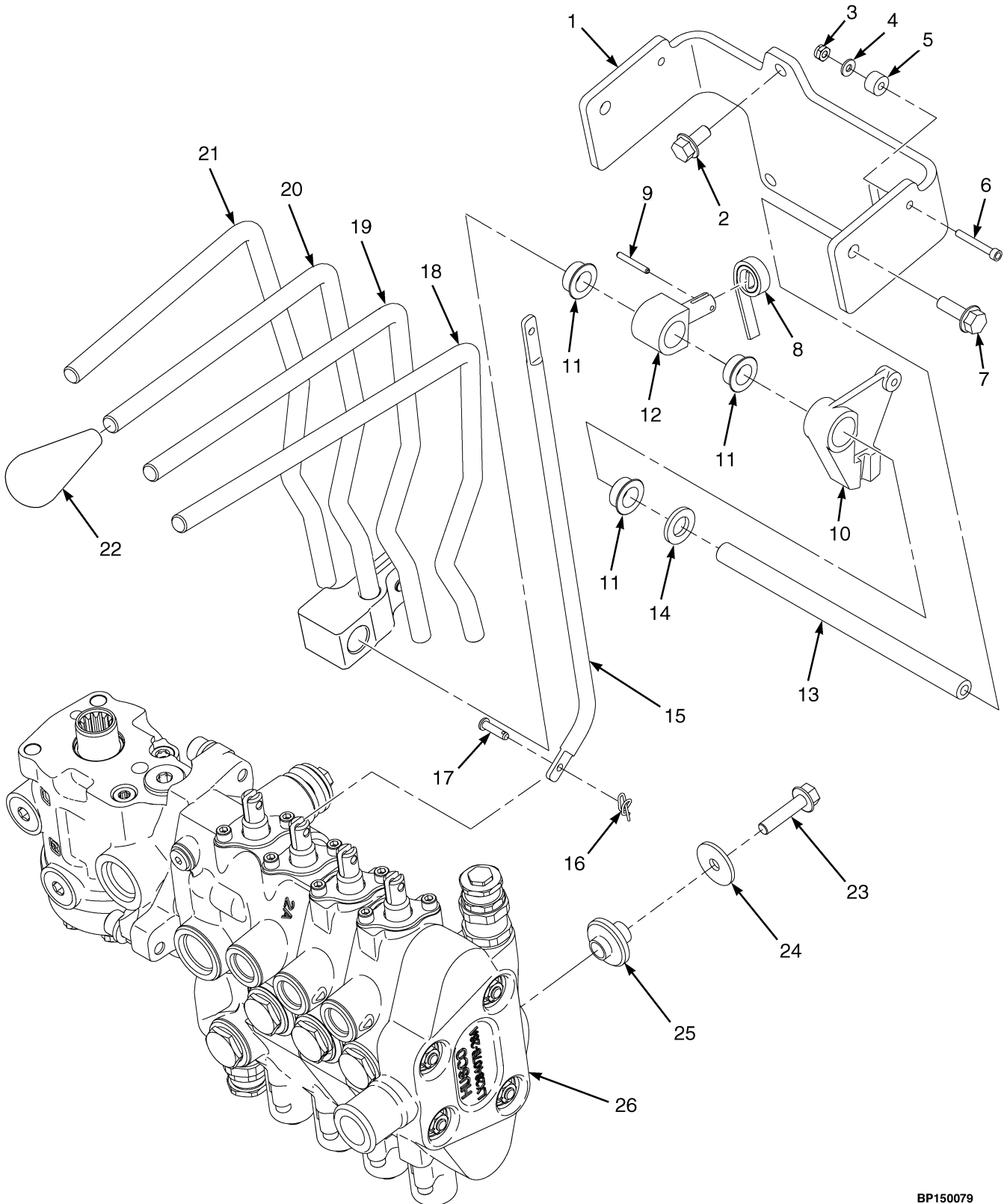


BP150076

**HAND LEVERS
THREE FUNCTION
WITHOUT DETENTED LEVERS**

ITEM	PART NO.	DESCRIPTION	QTY
1	1561162	Bracket.....	1
2	1527879	Capscrew.....	3
3	1583611	Capscrew.....	2
4	1528327	Pivot Shaft	1
5	1564747	Bushing.....	6
6	1517356	Hand Lever (Lift)	1
7	1517357	Hand Lever (Tilt)	1
8	1517358	Hand Lever (Auxiliary One)	1
9	1517395	Knob	3
10	1517394	Link	3
11	309109	Rod End Pin	6
12	1517361	Cotter Pin.....	6
13	1586627	Capscrew.....	3
14	1346752	Washer	3
15	2063991	Isolator.....	3
16	2064895	Control Valve Assembly (Manual) (H2.0-3.0FT) (☞ Figure 9-9)	1
16	2064899	Control Valve Assembly (Manual) (H3.5FT) (☞ Figure 9-9)	1

HAND LEVERS (Figure 9-7) FOUR FUNCTION WITH DETENTED LEVERS

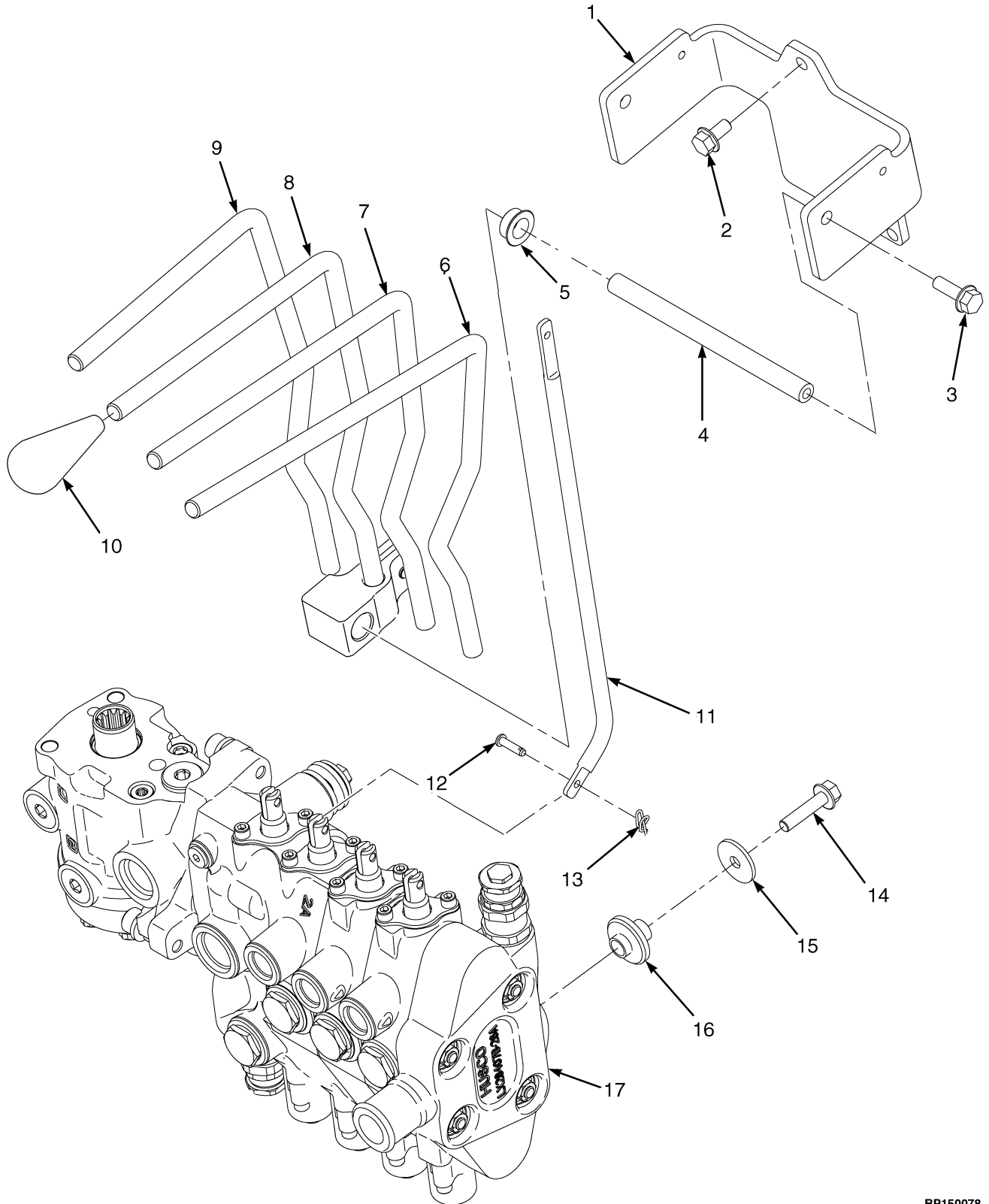


BP150079

HAND LEVERS FOUR FUNCTION WITH DETENTED LEVERS

ITEM	PART NO.	DESCRIPTION	QTY
1	1561164	Bracket.....	1
2	1527879	Capscrew.....	3
3	230882	Nut.....	1
4	197067	Washer.....	2
5	1528339	Spacer.....	1
6	18094	Capscrew.....	1
7	1583611	Capscrew.....	2
8	175861	Spring.....	1
9	302428	Pin.....	1
10	1542546	Lever.....	2
11	1564747	Bushing.....	12
12	306113	Pin (Selector).....	1
13	1528329	Pivot Shaft.....	1
14	320161	Washer.....	2
15	1517394	Link.....	4
16	1517361	Cotter Pin.....	8
17	309109	Rod End Pin.....	8
18	1517378	Hand Lever (Auxiliary Two And Three).....	1
19	1517358	Hand Lever (Auxiliary One).....	1
20	1517357	Hand Lever (Tilt).....	1
21	1517356	Hand Lever (Lift).....	1
22	1517395	Knob.....	4
23	1586627	Capscrew.....	3
24	1346752	Washer.....	3
25	2063991	Isolator.....	3
26	2064897	Control Valve Assembly (Manual) (H2.0-3.0FT) (☞ Figure 9-9).....	1
26	2064901	Control Valve Assembly (Manual) (H3.5FT) (☞ Figure 9-9).....	1

HAND LEVERS (Figure 9-8) FOUR FUNCTION WITHOUT DETENTED LEVERS

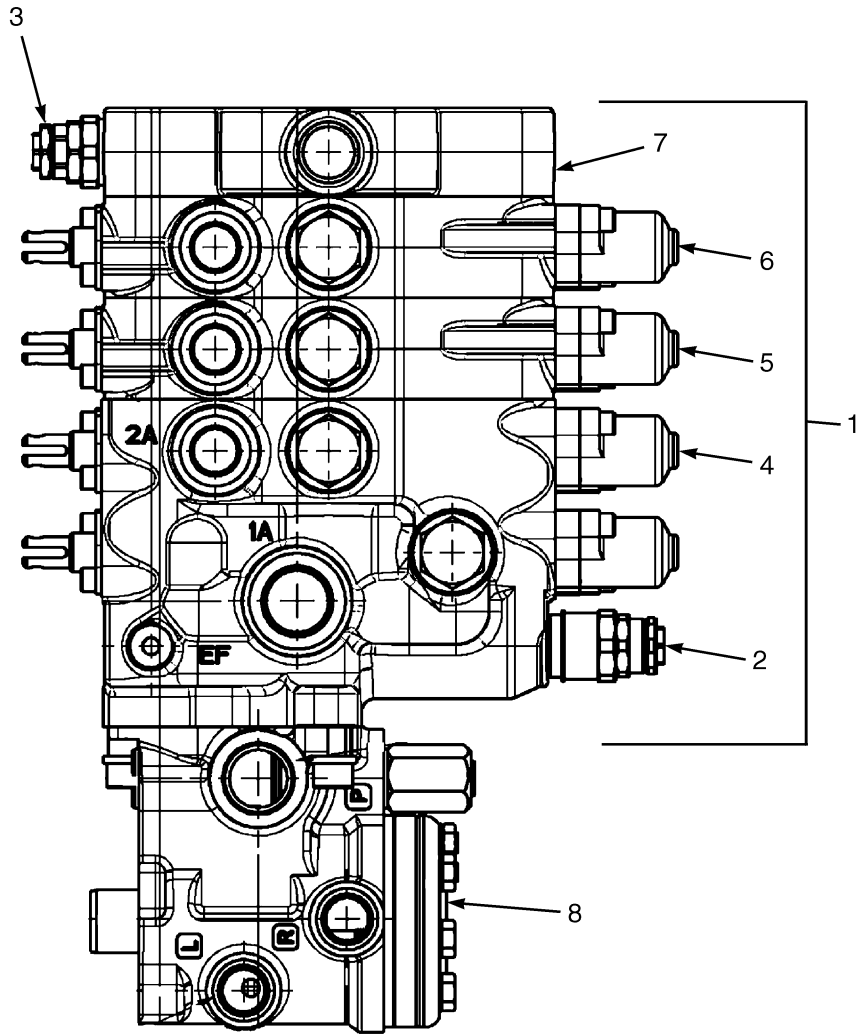


BP150078

**HAND LEVERS
FOUR FUNCTION
WITHOUT DETENTED LEVERS**

ITEM	PART NO.	DESCRIPTION	QTY
1	1561163	Bracket.....	1
2	1527879	Capscrew.....	3
3	1583611	Capscrew.....	2
4	1528328	Pivot Shaft	1
5	1564747	Bushing.....	8
6	1517359	Hand Lever (Auxiliary Two).....	1
7	1517358	Hand Lever (Auxiliary One)	1
8	1517357	Hand Lever (Tilt)	1
9	1517356	Hand Lever (Lift)	1
10	1517395	Knob	4
11	1517394	Link	4
12	309109	Rod End Pin	8
13	1517361	Cotter Pin.....	8
14	1586627	Capscrew.....	3
15	1346752	Washer	3
16	2063991	Isolator.....	3
17	2064897	Control Valve Assembly (Manual) (H2.0-3.0FT) (☞ Figure 9-9)	1
17	2064901	Control Valve Assembly (Manual) (H3.5FT) (☞ Figure 9-9)	1

**CONTROL VALVE ASSEMBLY (Figure 9-9)
MANUAL CONTROL
THREE AND FOUR FUNCTION**



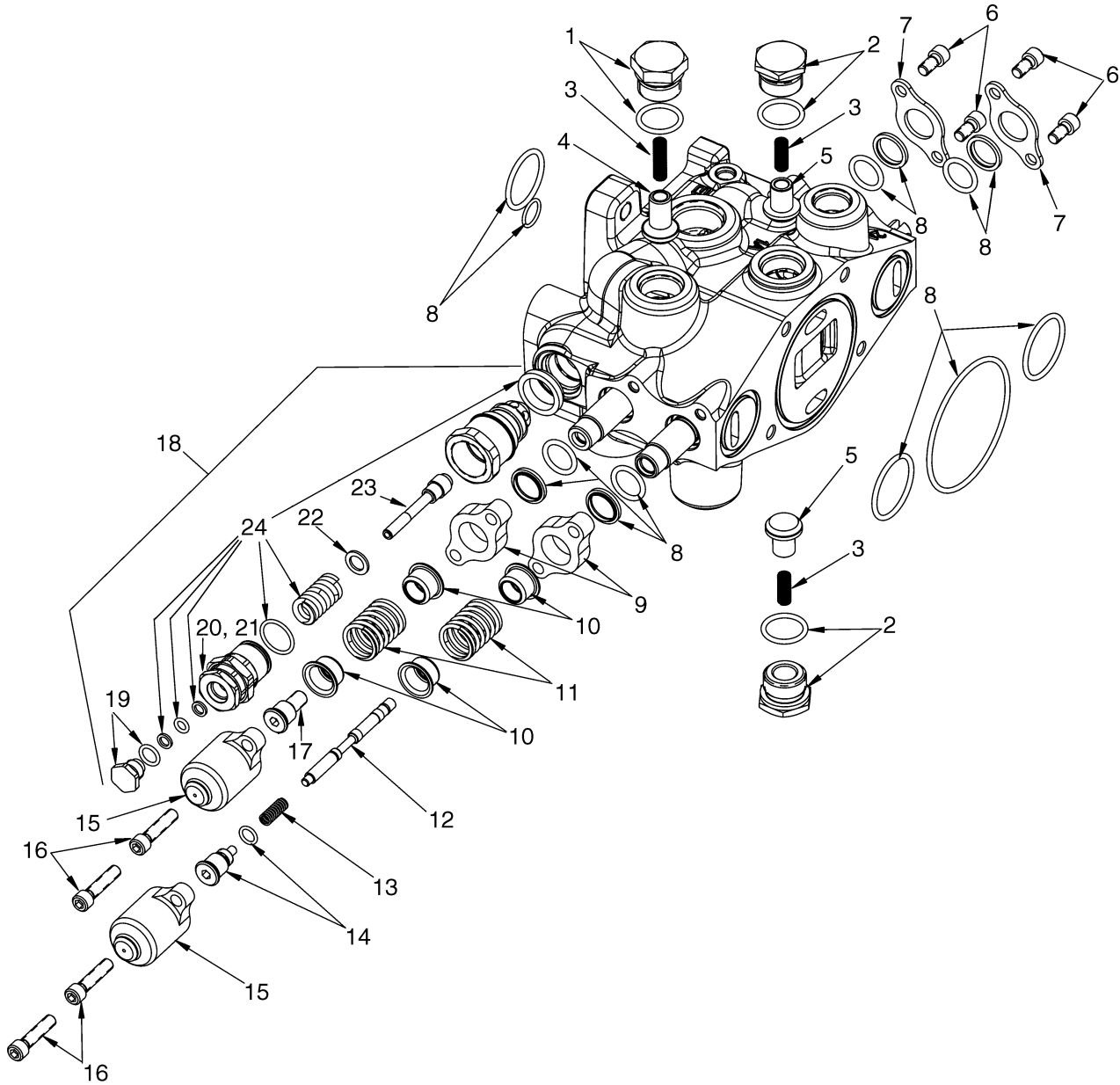
BP140045

CONTROL VALVE ASSEMBLY MANUAL CONTROL THREE AND FOUR FUNCTION

KEY:**A: H2.0-3.0FT****B: H3.5FT**

ITEM	PART NO.	DESCRIPTION	QTY	
			A	B
	2064895	Control Valve Assembly (Manual) (3 Function).....	1	..
	2064897	Control Valve Assembly (Manual) (Four Function)	1	..
	2064899	Control Valve Assembly (Manual) (Three Function)	1
	2064901	Control Valve Assembly (Manual) (Four Function)	1
1	2064885	Hydraulic Control Valve (Three Function).....	1	..
1	2064886	Hydraulic Control Valve (Four Function).....	1	..
1	2064887	Hydraulic Control Valve (Three Function).....	..	1
1	2064888	Hydraulic Control Valve (Four Function).....	..	1
2	1578747	Relief Valve (3100 PSI Main Relief)	1	..
2	1578748	Relief Valve (3400 PSI Main Relief)	1
2	1580097	Seal and Spring Kit.....	1	1
3	1578707	Valve (Secondary Relief)	1	1
3	1580131	Seal and Spring Kit.....	1	1
4	1578743	Valve Assembly (Lift and Tilt) (☞ Figure 9-10)	1	1
5	1578744	Auxiliary One Section (Three Function) (☞ Figure 9-11)	1	1
6	1578745	Auxiliary Two Section (Four Function) (☞ Figure 9-11)	1	1
7	1578746	Outlet Section (☞ Figure 9-12)	1	1
8	2063117	Steering Control Unit (☞ Figure 7-3)	1	..
8	2056869	Steering Control Unit (☞ Figure 7-3)	1
8	1579908	Seal Kit.....	1	1
	1580146	Seal Kit (Three Function)	1	1
	1580148	Seal Kit (Four Function)	1	1

VALVE ASSEMBLY, LIFT AND TILT (Figure 9-10) MANUAL CONTROL VALVE THREE AND FOUR FUNCTION

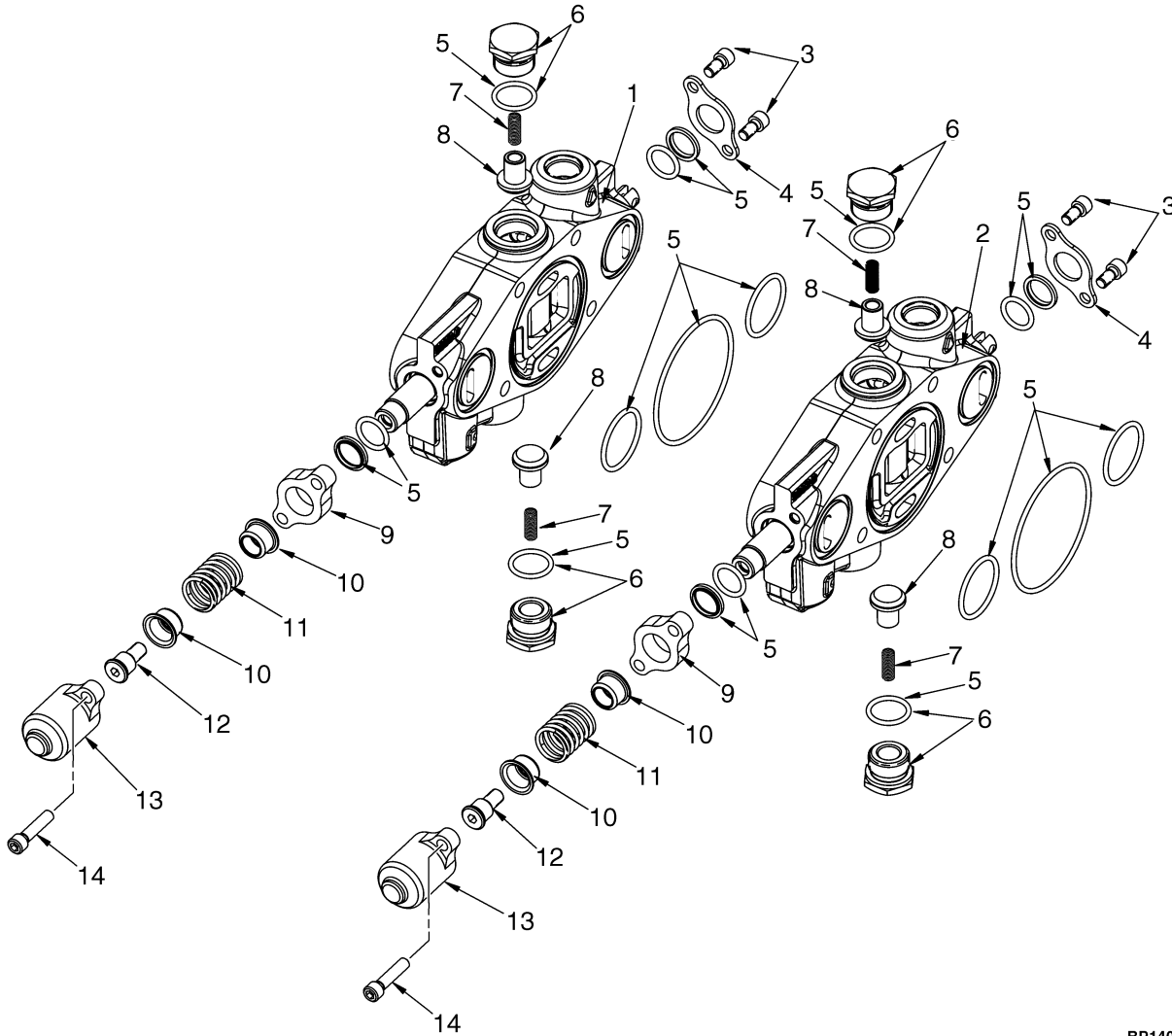


BP140046

**VALVE ASSEMBLY, LIFT AND TILT
MANUAL CONTROL VALVE
THREE AND FOUR FUNCTION**

ITEM	PART NO.	DESCRIPTION	QTY
	1578743	Valve Assembly (Lift and Tilt)	1
1	1578713	Plug Set.....	2
2	1578940	Plug	1
3	77442	Spring.....	3
4	1578943	Poppet	1
5	77443	Poppet	2
6	16706	Screw	4
7	188515	Seal Plate	2
8	1580133	Seal Kit.....	1
9	Seal Plate	2
10	320289	Spring Seat	2
11	1581860	Spring.....	2
12	1581861	Piston	1
13	341462	Spring.....	1
14	386015	Spool End.....	1
15	1560681	Cap.....	2
16	1578705	Capscrew	4
17	1581859	Spool End.....	1
18	1578747	Relief Valve (3100 PSI Main Relief) (H2.0-3.0FT).....	1
18	1578748	Relief Valve (3400 PSI Main Relief) (H3.5FT).....	1
19	Plug.....	1
20	Screw	1
21	Nut	1
22	Washer.....	1
23	Poppet.....	1
24	1580097	Seal and Spring Kit (H2.0-3.0FT).....	1
24	1580131	Seal and Spring Kit (H3.5FT).....	1

AUXILIARY ONE AND TWO (Figure 9-11) MANUAL CONTROL VALVE THREE AND FOUR FUNCTION



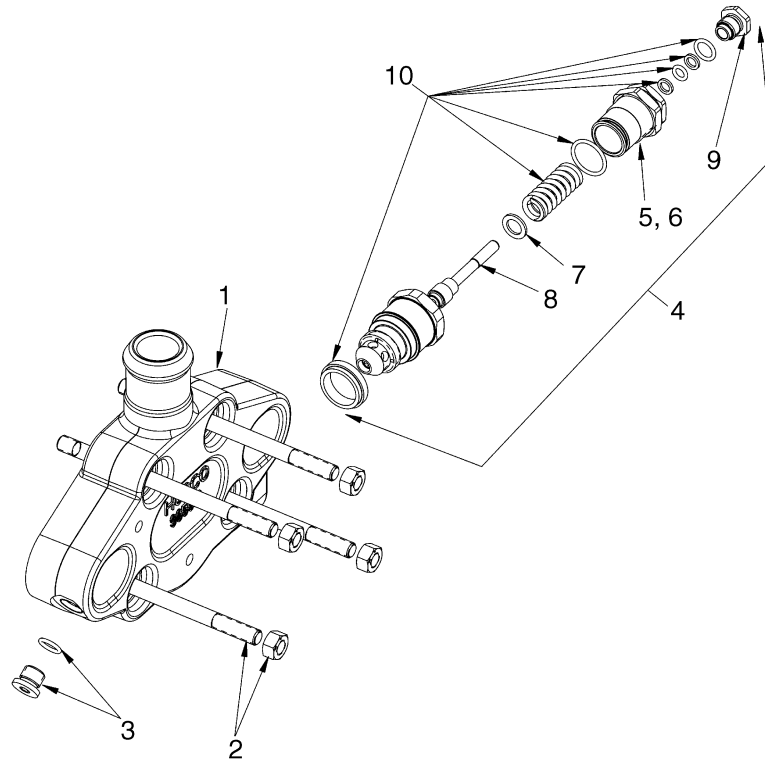
BP140047

AUXILIARY ONE AND TWO MANUAL CONTROL VALVE THREE AND FOUR FUNCTION

KEY:**A: Three Function****B: Four Function**

ITEM	PART NO.	DESCRIPTION	QTY	
			A	B
1	1578744	Auxiliary One Section	1	1
2	1578745	Auxiliary Two Section.....	..	1
3	16706	Screw	2	2
4	188515	Seal Plate	1	1
5	1580147	Seal Kit.....	1	1
6	1578713	Plug Set.....	2	2
6	77441	Plug.....	2	2
7	77442	Spring.....	2	2
8	77443	Poppet.....	2	2
9	Seal Plate	1	1
10	320289	Spring Seat	1	1
11	1581860	Spring.....	1	1
12	1581859	Spool End.....	1	1
13	1560681	Cap.....	1	1
14	1578705	Capscrew	2	4

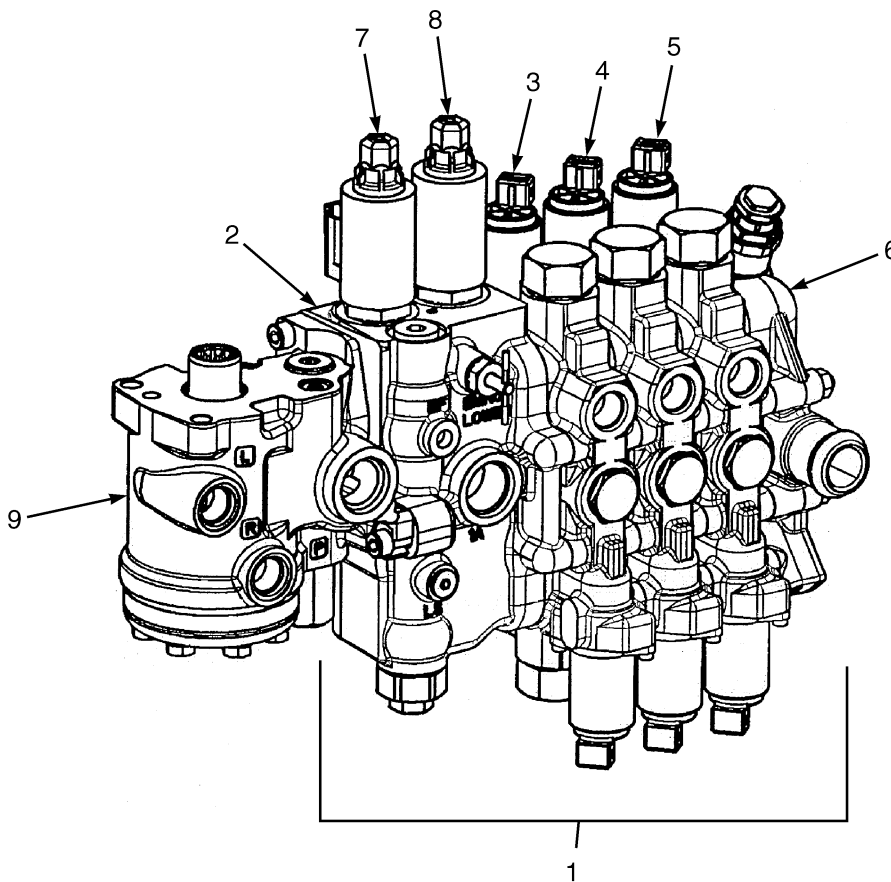
OUTLET SECTION (Figure 9-12) MANUAL CONTROL VALVE THREE AND FOUR FUNCTION



BP140048

ITEM	PART NO.	DESCRIPTION	QTY
1	1578746	Outlet Section	1
2	1580155	Tie Rod Kit (Three Function)	1
2	1580156	Tie Rod Kit (Four Function)	1
2	15055	Nut.....	4
3	1578712	Plug Assembly	1
3	204128	Plug	1
4	1578707	Valve (Secondary Relief)	1
5	Nut.....	1
6	Screw	1
7	Washer	1
8	Poppet	1
9	Plug	1
10	1580131	Seal and Spring Kit	1

CONTROL VALVE ASSEMBLY (Figure 9-13) ELECTRONIC CONTROL THREE AND FOUR FUNCTION



BP140053

CONTROL VALVE ASSEMBLY ELECTRONIC CONTROL THREE AND FOUR FUNCTION

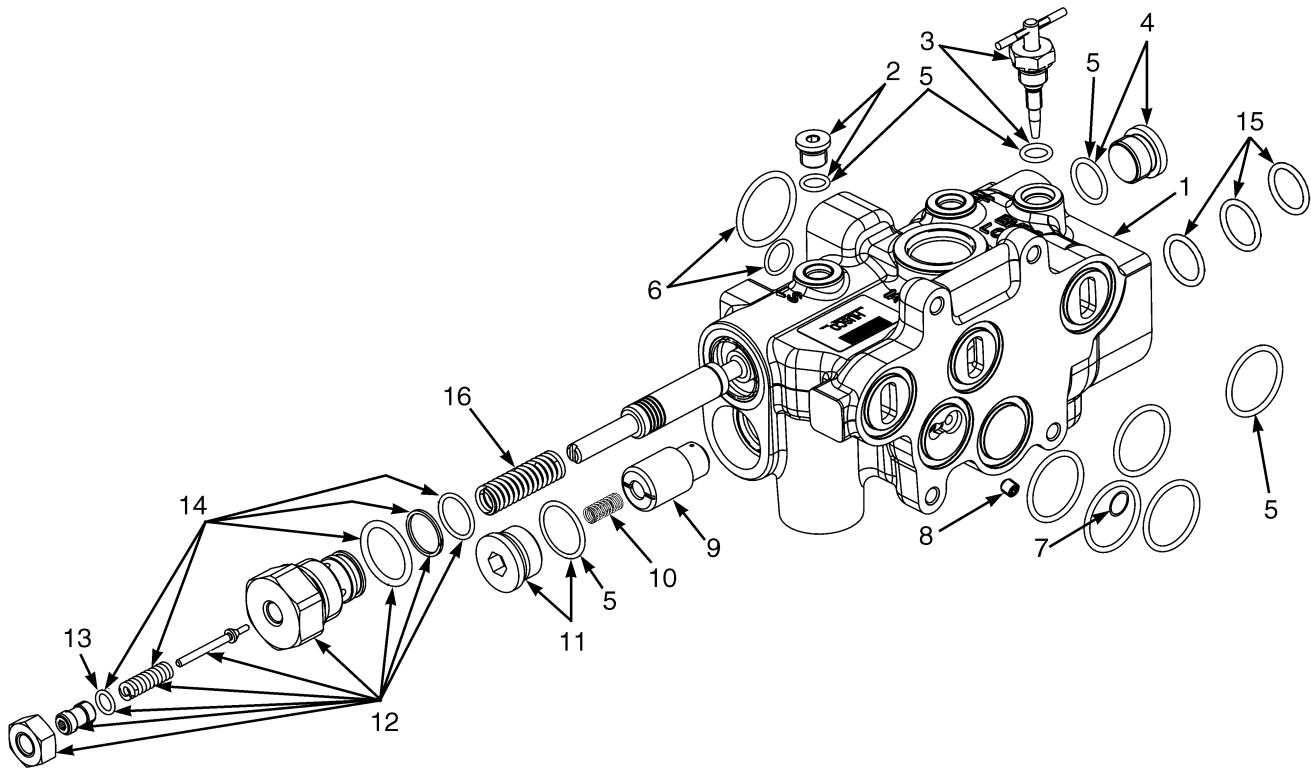
KEY:**A: H2.0-3.0FT****B: H3.5FT**

ITEM	PART NO.	DESCRIPTION	QTY	
			A	B
	c 2064848	Control Valve Assembly	1	..
	c 2064851	Control Valve Assembly	1
	a 2064859	Control Valve Assembly	1	..
	a 2064862	Control Valve Assembly	1
1	c 2064845	Control Valve	1	..
1	c 2064849	Control Valve	1
1	a 2064857	Control Valve	1	..
1	a 2064860	Control Valve	1
2	1578701	Valve Body Assembly (Lift and Lower) (☞ Figure 9-14)	1	..
2	1578700	Valve Body Assembly (Lift and Lower) (☞ Figure 9-14)	1
3	1578702	Tilt Section (☞ Figure 9-17)	1	1
4	c 1578703	Auxiliary One Section (☞ Figure 9-15)	1	1
5	a 1578741	Auxiliary Two Section (☞ Figure 9-16)	1	1
6	1578704	Outlet Section (☞ Figure 9-18)	1	1
7	1590113	Poppet Valve Assembly (Lift) (☞ Figure 9-19)	1	1
8	1590114	Poppet Valve Assembly (Lower) (☞ Figure 9-19)	1	1
9	2063117	Steering Control Unit (☞ Figure 7-3)	1	..
9	2063118	Steering Control Unit (☞ Figure 7-3)	1
	b 1579908	Seal Kit	1	1
	b 2063991	Isolator	3	3
	b 1586627	Capscrew	3	3
	b 1346752	Washer	3	3

FOOTNOTES:

- a** Four Function
- b** Not Illustrated
- c** Three Function

VALVE ASSEMBLY, LIFT AND LOWER (Figure 9-14) ELECTRONIC CONTROL VALVE THREE AND FOUR FUNCTION

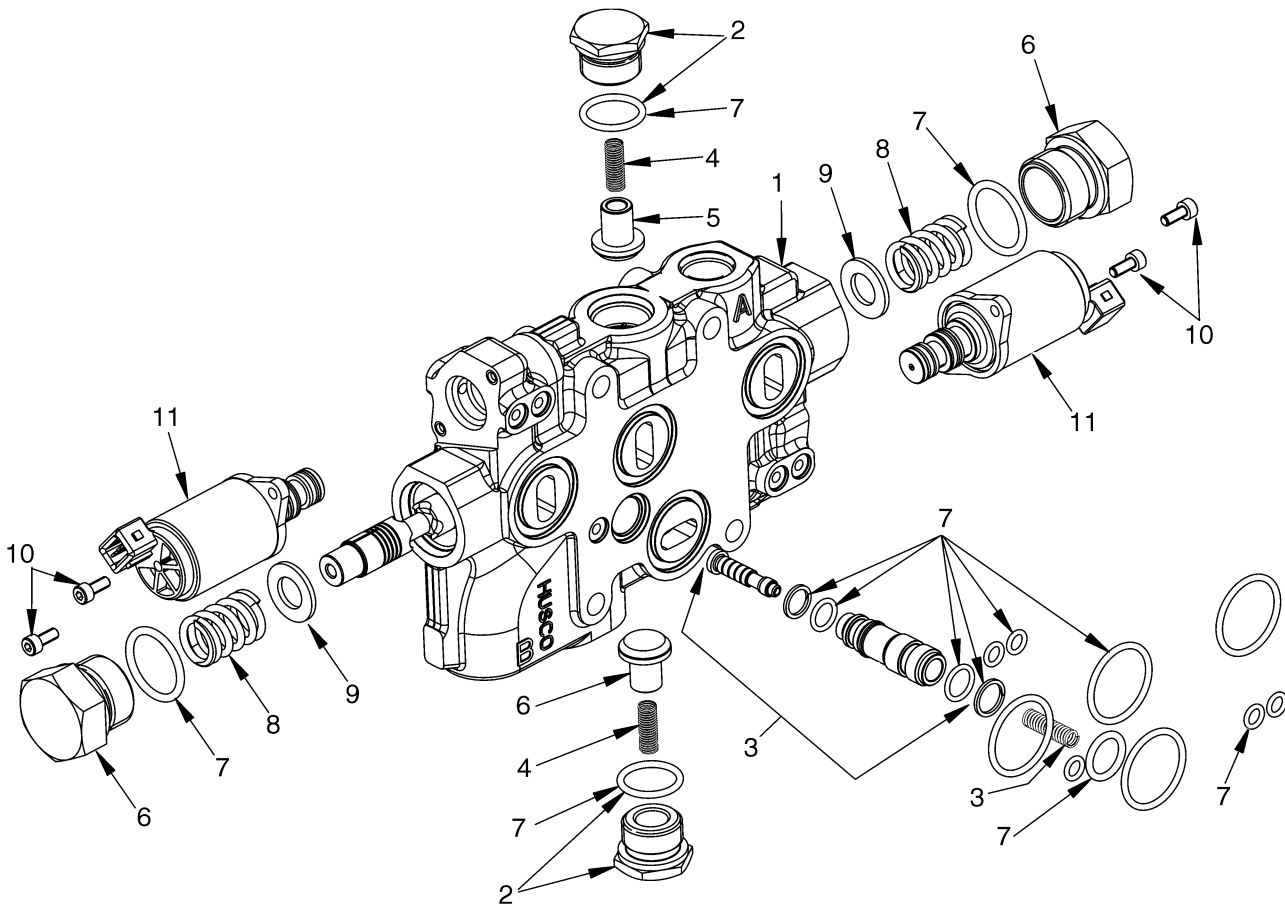


HP140018

**VALVE ASSEMBLY, LIFT AND LOWER
ELECTRONIC CONTROL VALVE
THREE AND FOUR FUNCTION**

ITEM	PART NO.	DESCRIPTION	QTY
1	1578701	Valve Body Assembly (Lift and Lower) (H2.0-3.0FT).....	1
1	1578700	Valve Body Assembly (Lift and Lower) (H3.5FT).....	1
2	1578712	Plug Assembly.....	1
2	204128	Plug.....	1
3	1581862	Manual Lower Assembly Kit.....	1
4	1569602	Plug.....	1
5	1578904	Seal Kit.....	1
6	1578911	Seal Kit (Steering Control Unit Interface).....	1
7	1578875	Shuttle.....	1
8	1578888	Set Screw.....	1
9	1586280	Poppet.....	1
10	1578876	Spring.....	1
11	1578714	Plug.....	1
12	1578706	Relief Valve (Main) (H2.0-3.0FT).....	1
12	1578753	Relief Valve (Main) (H3.5FT).....	1
12	1580749	Adjusting Screw.....	1
13	16480	O-Ring.....	1
14	1580132	Seal and Spring Kit.....	1
15	1586279	Seal Kit.....	AR
16	1578881	Spring.....	1

AUXILIARY ONE SECTION (Figure 9-15) ELECTRONIC CONTROL THREE AND FOUR FUNCTION



HP140019

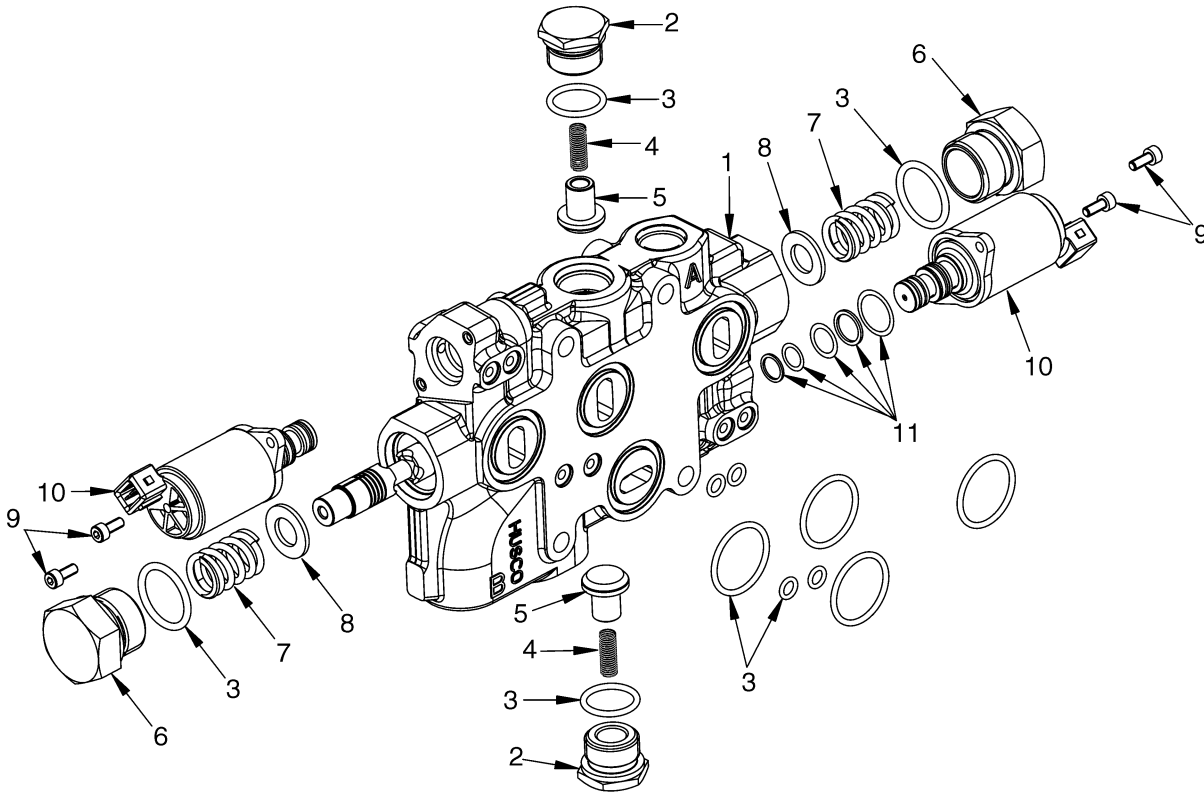
**AUXILIARY ONE SECTION
ELECTRONIC CONTROL
THREE AND FOUR FUNCTION**

ITEM	PART NO.	DESCRIPTION	QTY
1	1578703	Auxiliary One Section	1
2	1578713	Plug Set.....	2
2	77441	Plug.....	2
3	1578718	Anti-Stall Valve Kit	1
3	1578886	Spring.....	1
3	266519	O-Ring.....	2
4	77442	Spring.....	2
5	77443	Poppet.....	2
6	1578889	Plug Set.....	2
7	1578906	Seal Kit (Auxiliary One Section)	1
8	1578882	Spring.....	2
9	1578883	Washer	2
10	1578878	Capscrew	4
11	1578711	Solenoid	2
	a 1578912	Seal Kit.....	1

FOOTNOTES:

a Not Illustrated

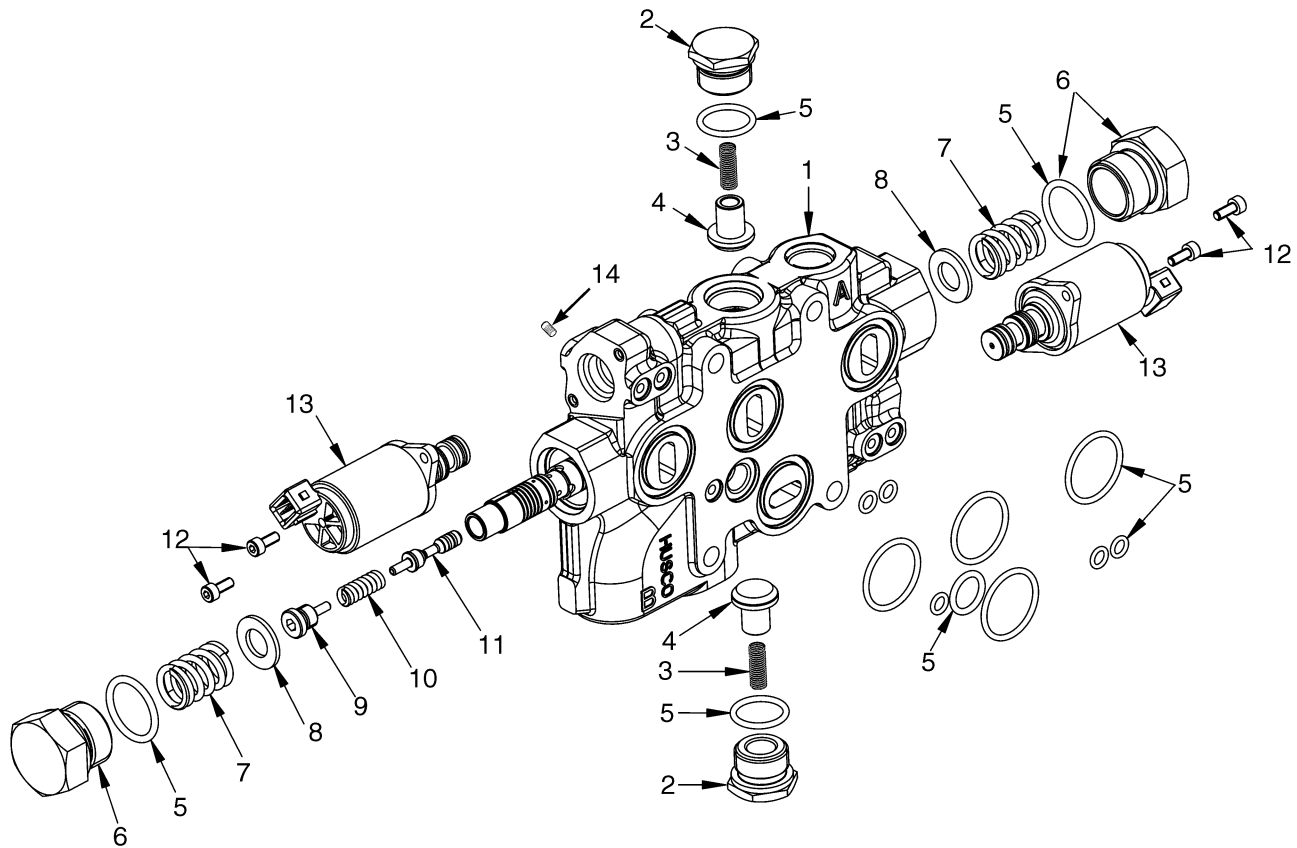
AUXILIARY TWO SECTION (Figure 9-16) ELECTRONIC CONTROL FOUR FUNCTION



**AUXILIARY TWO SECTION
ELECTRONIC CONTROL
FOUR FUNCTION**

ITEM	PART NO.	DESCRIPTION	QTY
1	1578741	Auxiliary Two Section.....	1
2	1578713	Plug Set.....	2
2	77441	Plug.....	2
3	1578907	Seal Kit.....	1
4	77442	Spring.....	2
5	77443	Poppet.....	2
6	1578889	Plug Set.....	2
7	1578882	Spring.....	2
8	1578883	Washer.....	2
9	1578878	Capscrew.....	4
10	1578711	Solenoid.....	2
11	1578912	Seal Kit.....	1

TILT SECTION (Figure 9-17) ELECTRONIC CONTROL THREE AND FOUR FUNCTION

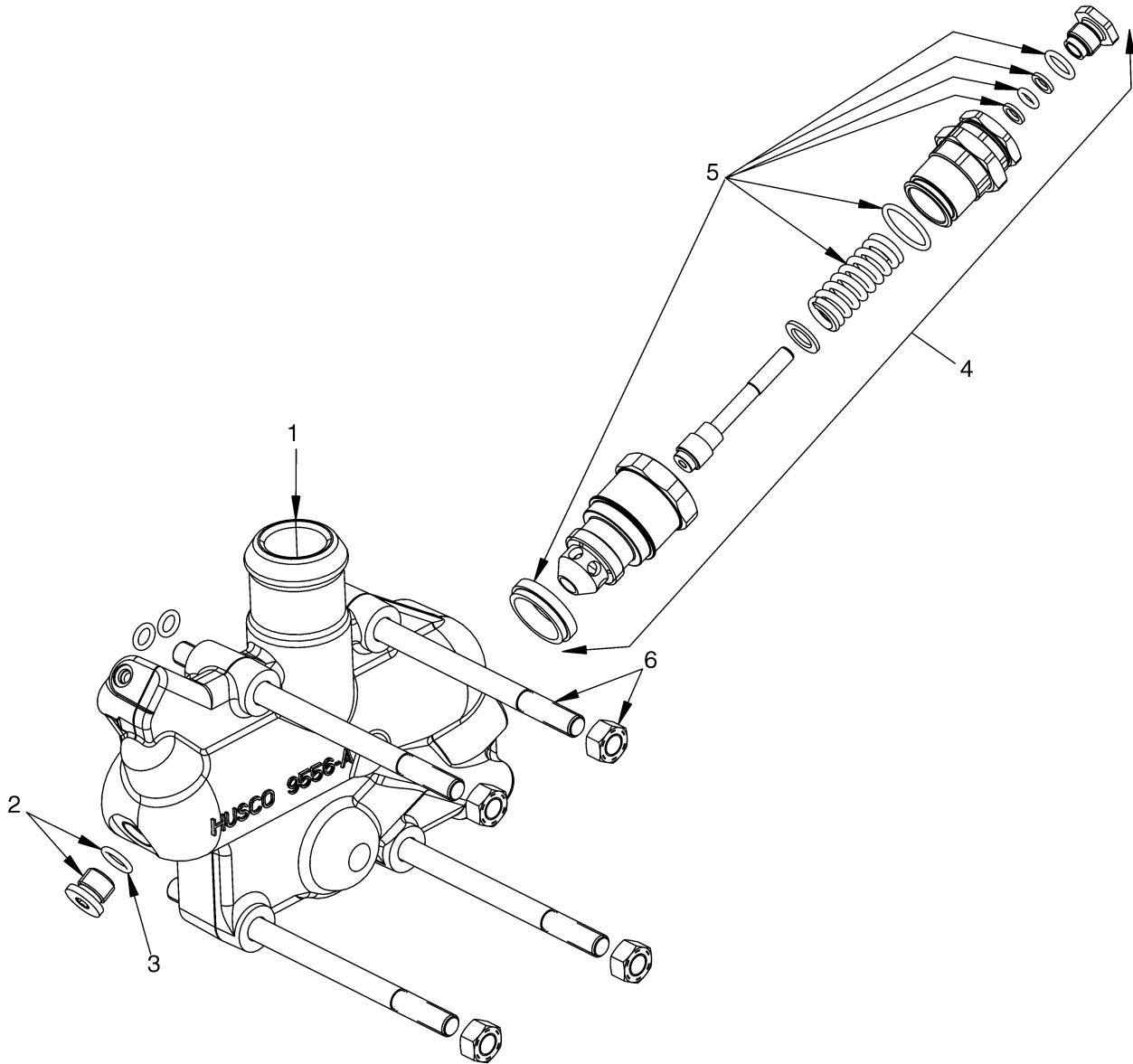


BP140054

**TILT SECTION
ELECTRONIC CONTROL
THREE AND FOUR FUNCTION**

ITEM	PART NO.	DESCRIPTION	QTY
1	1578702	Tilt Section.....	1
2	1578713	Plug Set.....	2
3	77442	Spring.....	2
4	77443	Poppet.....	2
5	1578905	Seal Kit.....	1
6	1578889	Plug Set.....	2
7	1578882	Spring.....	2
8	1578883	Washer.....	2
9	Spool End.....	1
10	Spring.....	1
11	Piston.....	1
12	1578878	Capscrew.....	4
13	1578711	Solenoid.....	2
13	1578912	Seal Kit.....	1
14	1578887	Set Screw.....	1

OUTLET SECTION (Figure 9-18) ELECTRONIC CONTROL THREE AND FOUR FUNCTION

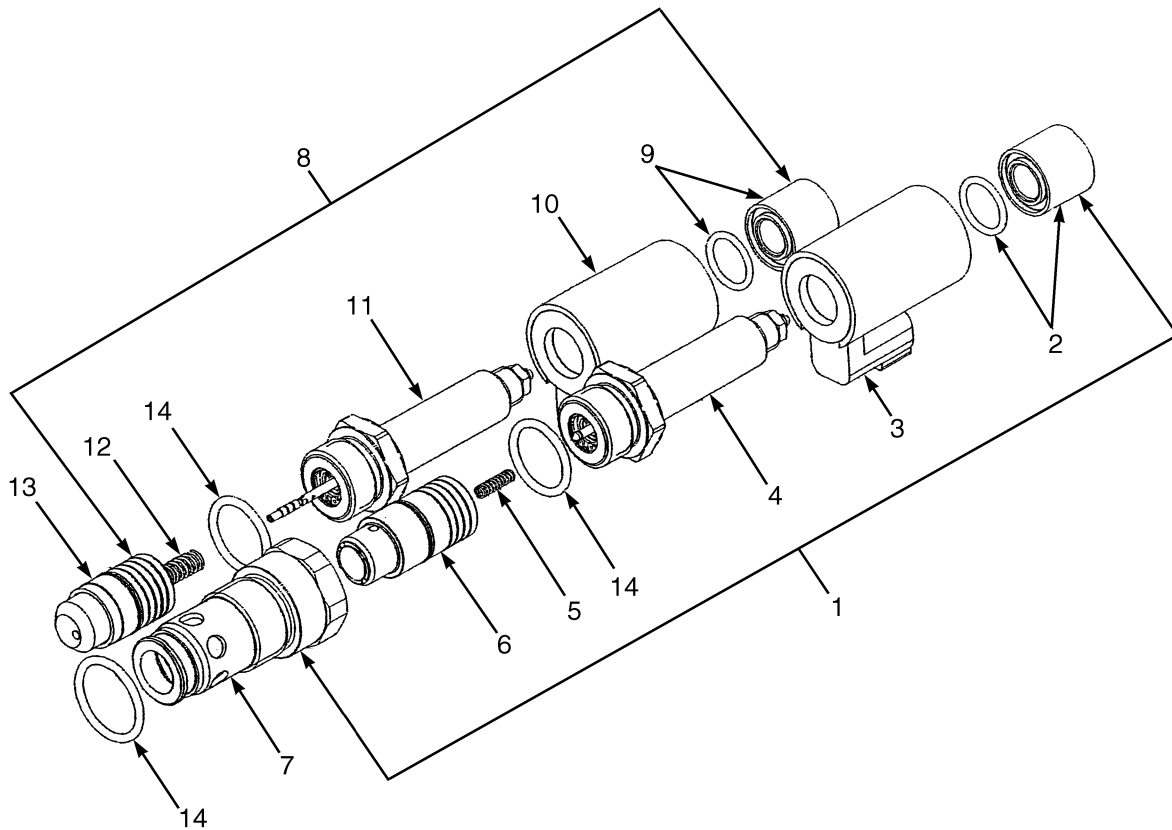


BP140058

**OUTLET SECTION
ELECTRONIC CONTROL
THREE AND FOUR FUNCTION**

ITEM	PART NO.	DESCRIPTION	QTY
1	1578704	Outlet Section	1
2	1578712	Plug Assembly.....	1
2	204128	Plug.....	1
3	1578904	Seal Kit.....	1
4	1578707	Valve (Secondary Relief).....	1
5	1580131	Seal and Spring Kit.....	1
6	1578715	Tie Rod Kit (Three Function)	1
6	1580151	Tie Rod Kit (Four Function)	1
6	15055	Nut.....	4

ELECTRO HYDRAULIC POPPET VALVE (Figure 9-19) ELECTRONIC CONTROL LIFT AND LOWER

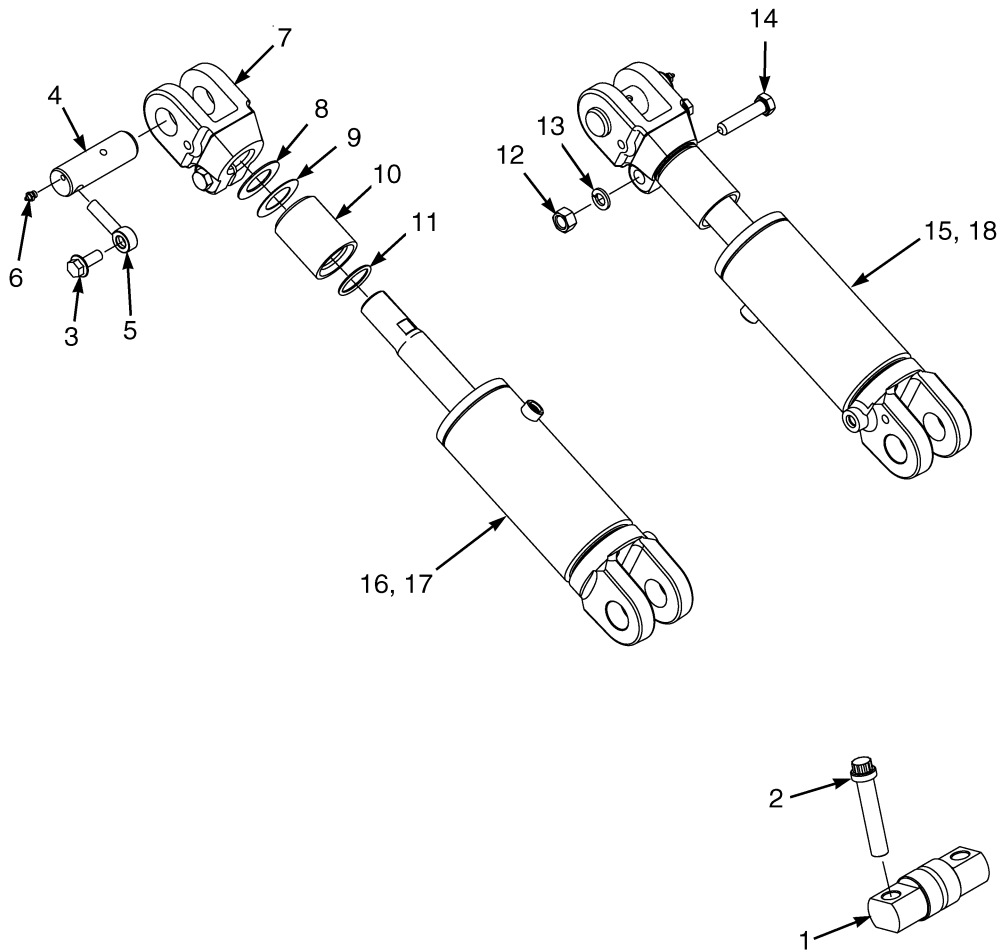


BP140055

**ELECTRO HYDRAULIC POPPET VALVE
ELECTRONIC CONTROL
LIFT AND LOWER**

ITEM	PART NO.	DESCRIPTION	QTY
1	1590114	Poppet Valve Assembly (Lower)	1
2	1586018	Coil Nut.....	1
3	1578710	Coil	1
4	1578918	Tube (Solenoid)	1
5	1578934	Spring.....	1
6	1586021	Poppet	1
7	1586020	Sleeve.....	1
8	1590113	Poppet Valve Assembly (Lift)	1
9	1586018	Coil Nut.....	1
10	1578710	Coil	1
11	1586019	Tube (Solenoid)	1
12	1586017	Spring.....	1
13	1586016	Poppet	1
14	1586279	Seal Kit	1

TILT CYLINDER AND MAST INSTALLATION (Figure 9-20)



HP150985

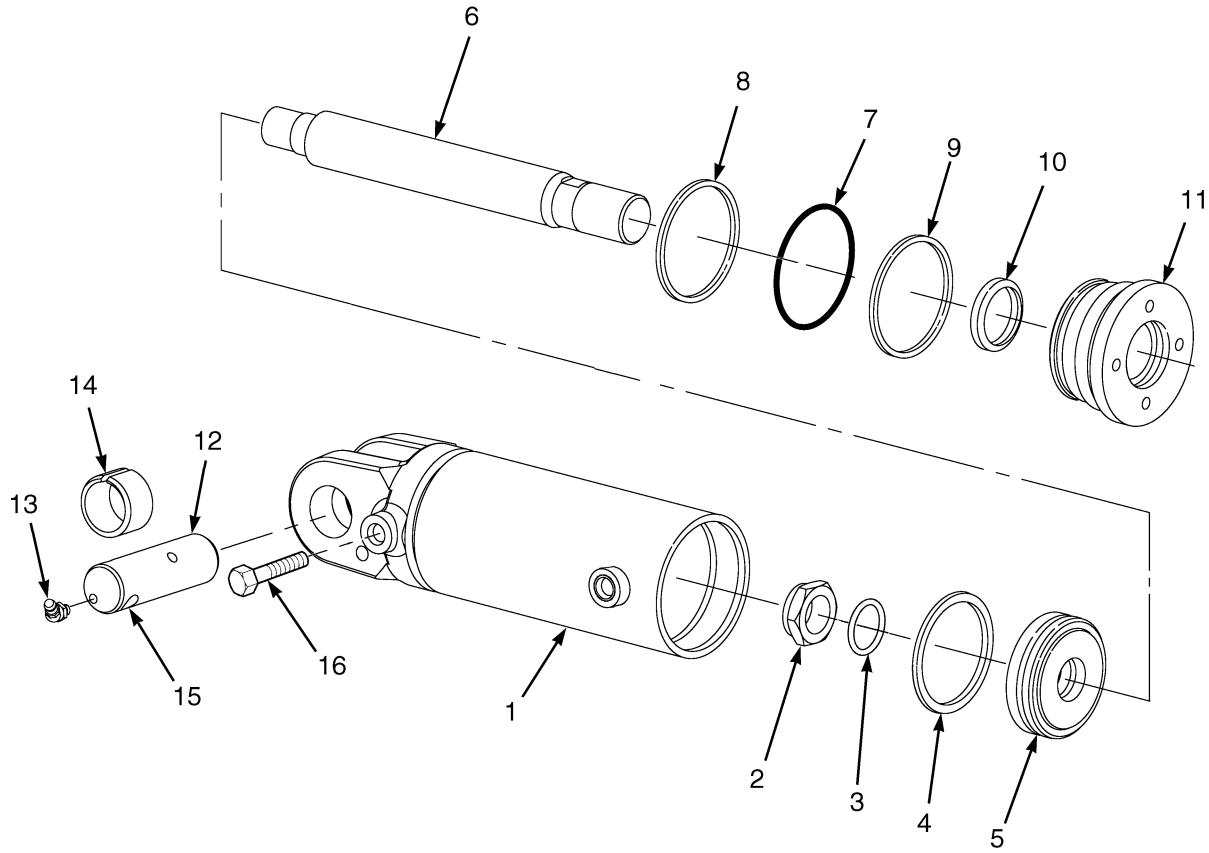
TILT CYLINDER AND MAST INSTALLATION**KEY:****A: H2.0-2.5FT****B: H3.0-3.5FT**

ITEM	PART NO.	DESCRIPTION	QTY	
			A	B
1	1514269	Pin	2	2
2	1520290	Bolt	4	4
3	1586013	Capscrew.....	2	2
4	1533493	Pin	2	2
5	1533494	Anchor Pin	2	2
6	16041	Lube Fitting.....	2	2
7	bcd 1544118	Rod End.....	2	..
7	a 1544120	Rod End.....	2	..
7	bcd 1544119	Rod End.....	..	2
7	a 1544121	Rod End.....	..	2
8	cd 134675	Shim	4	..
8	cd 142247	Shim	4
9	cd 1325119	Shim	4	..
9	cd 1325120	Shim	4
10	d 1544122	Tilt Spacer	2	..
10	c 192877	Tilt Spacer	2	..
10	d 1544123	Tilt Spacer	2
10	c 1544124	Tilt Spacer	2
11	cd 55434	O-Ring	4	..
11	cd 60563	O-Ring	4
12	1581848	Nut.....	2	2
13	1581564	Lockwasher.....	2	2
14	1597381	Capscrew.....	2	2
15	2069187	Tilt Cylinder (LH) (☞ Figure 9-21)	1	..
16	2069188	Tilt Cylinder (RH) (☞ Figure 9-21)	1	..
17	2069186	Tilt Cylinder (RH) (☞ Figure 9-22)	1
18	2069189	Tilt Cylinder (LH) (☞ Figure 9-22)	1

FOOTNOTES:

- a** 10° Forward/6° Back
- b** 6° Forward/10° Back
- c** 6° Forward/5° Back
- d** 6° Forward/6° Back

TILT CYLINDERS (Figure 9-21) H2.0-2.5FT

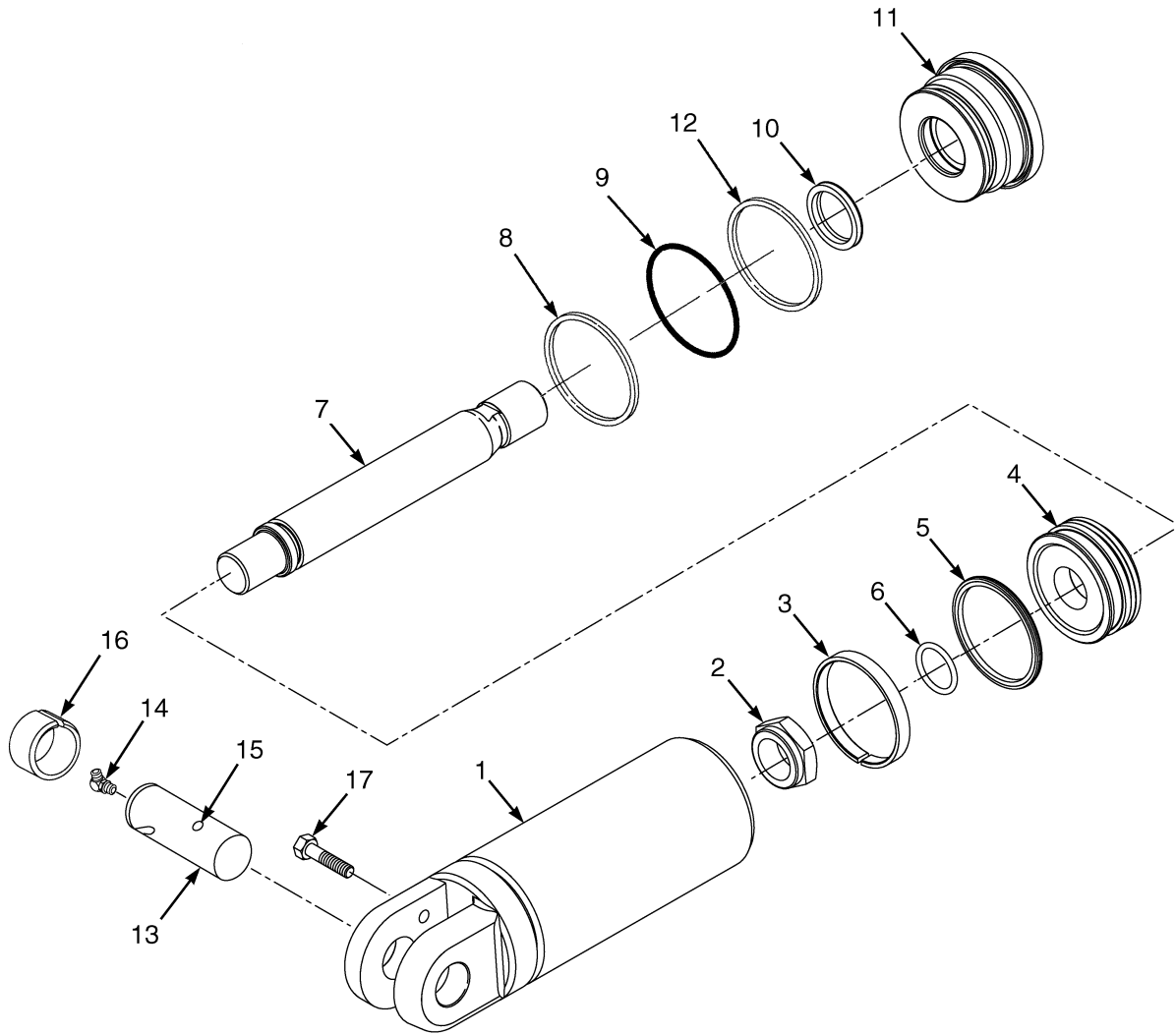


HP150974

**TILT CYLINDERS
H2.0-2.5FT**

ITEM	PART NO.	DESCRIPTION	QTY
	2069187	Tilt Cylinder (LH).....	1
	2069188	Tilt Cylinder (RH).....	1
1	2076537	Shell	1
1	2076541	Shell	1
2	2302899	Nut.....	1
3	39374	O-Ring.....	1
4	2044370	Seal (Piston).....	1
5	1338741	Piston	1
6	2076539	Rod.....	1
7	46388	O-Ring.....	1
8	154375	Back-Up Ring	1
9	1381082	Rod Seal.....	1
10	1383062	Wiper Ring.....	1
11	1338744	Gland.....	1
12	1533493	Pin	2
13	16040	Lube Fitting	2
14	300982	Bushing.....	2
15	1533494	Anchor Pin	1
16	1586013	Capscrew.....	1
	1492644	Seal Kit (Includes Items 3-4, 7-10)	1

TILT CYLINDERS (Figure 9-22) H3.0-3.5FT



BP150082

**TILT CYLINDERS
H3.0-3.5FT**

ITEM	PART NO.	DESCRIPTION	QTY
	2069186	Tilt Cylinder (RH)	1
	2069189	Tilt Cylinder (LH)	1
1	2076536	Shell	1
1	2076540	Shell	1
2	2070018	Nut	1
3	199852	Wear Ring	1
4	1381078	Piston	1
5	2044371	Piston Seal	1
6	237812	O-Ring	1
7	2076538	Rod	1
8	268619	O-Ring	1
9	147973	Back-Up Ring	1
10	1383063	Wiper Ring	1
11	1527520	Gland	1
12	1381083	Seal	1
13	1533493	Pin	1
14	16040	Lube Fitting	1
15	1533494	Anchor Pin	1
16	300982	Bushing	1
17	1586013	Capscrew	1
	1527719	Seal Kit (Includes Items 3, 5-6, 8-10, 12)	1