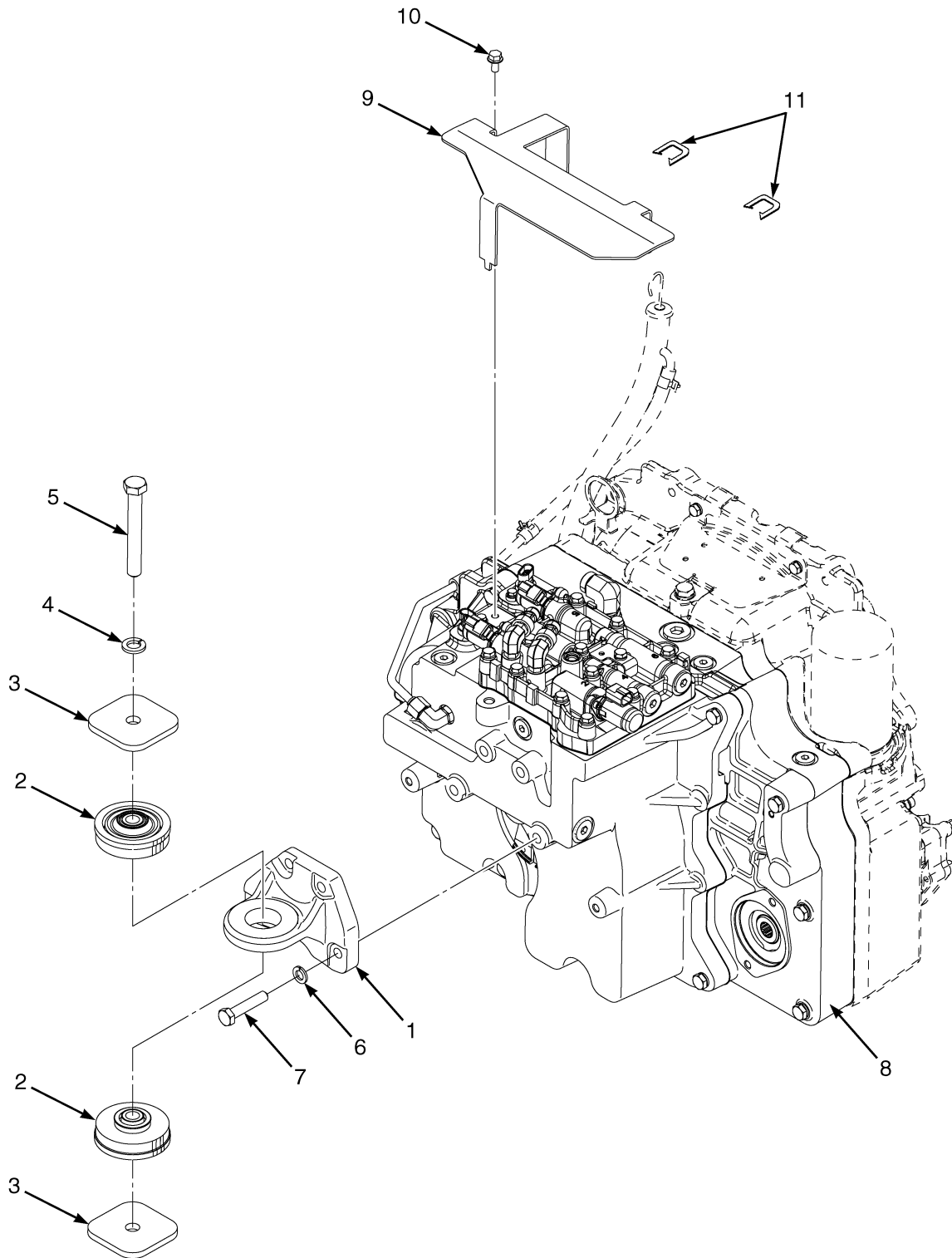


## TRANSMISSION MOUNTING (Figure 5-1)

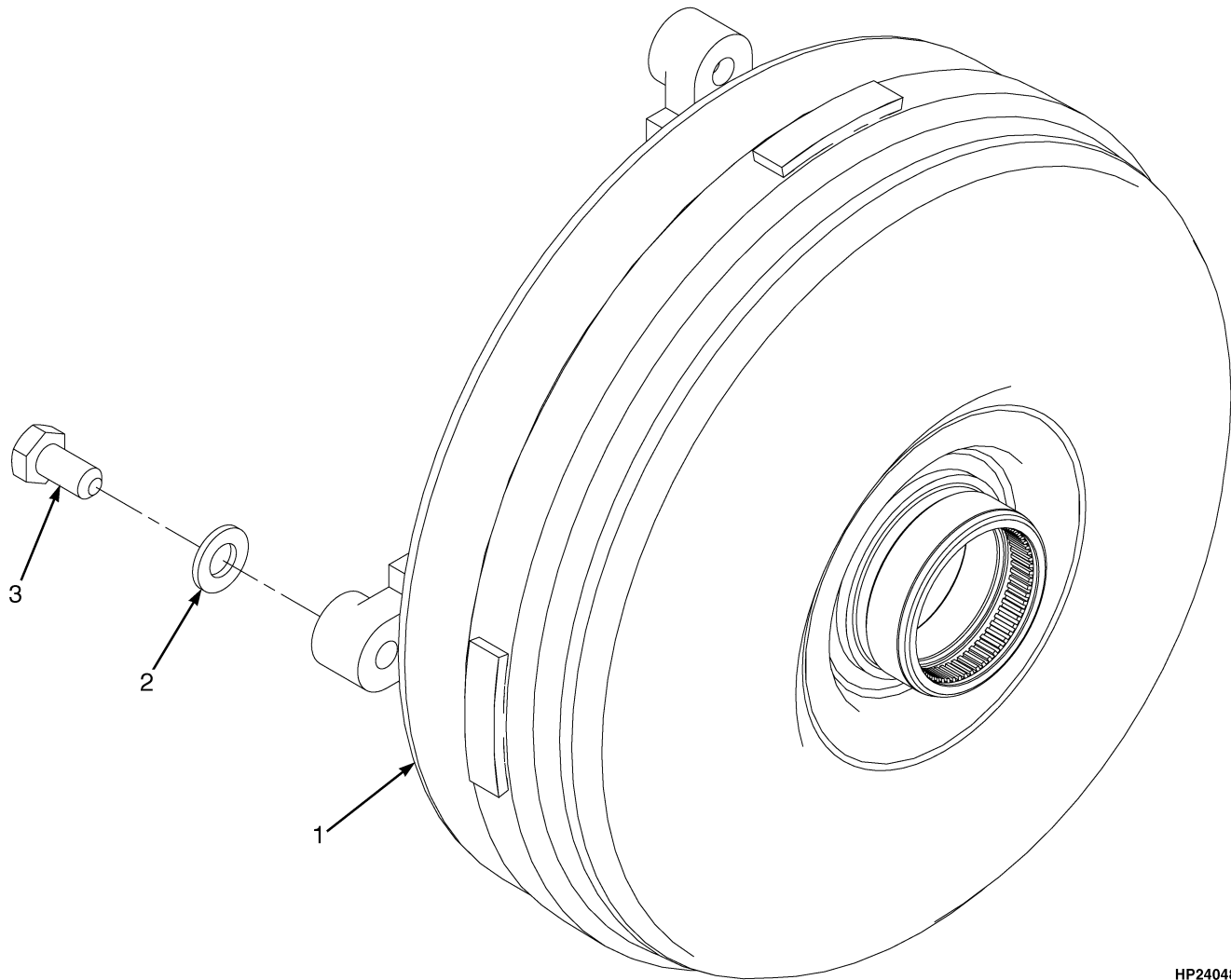


HM240481

**TRANSMISSION MOUNTING**

ITEM	PART NO.	DESCRIPTION	QTY
1	1501274	Bracket.....	1
2	2070147	Isolator.....	2
3	1566329	Washer .....	2
4	292685	Lockwasher.....	1
5	293697	Capscrew.....	1
6	292683	Lockwasher.....	4
7	292531	Capscrew.....	4
8	1529896	Transmission Assembly (Dual Speed) (☞ Figure 5-10, ☞ Figure 5-11) .....	1
8	1550565	Transmission Assembly (☞ Figure 5-6, ☞ Figure 5-7) .....	1
9	1569768	Shield.....	1
10	1527879	Capscrew.....	1
11	1380849	Trim.....	2

## TORQUE CONVERTER (Figure 5-2)



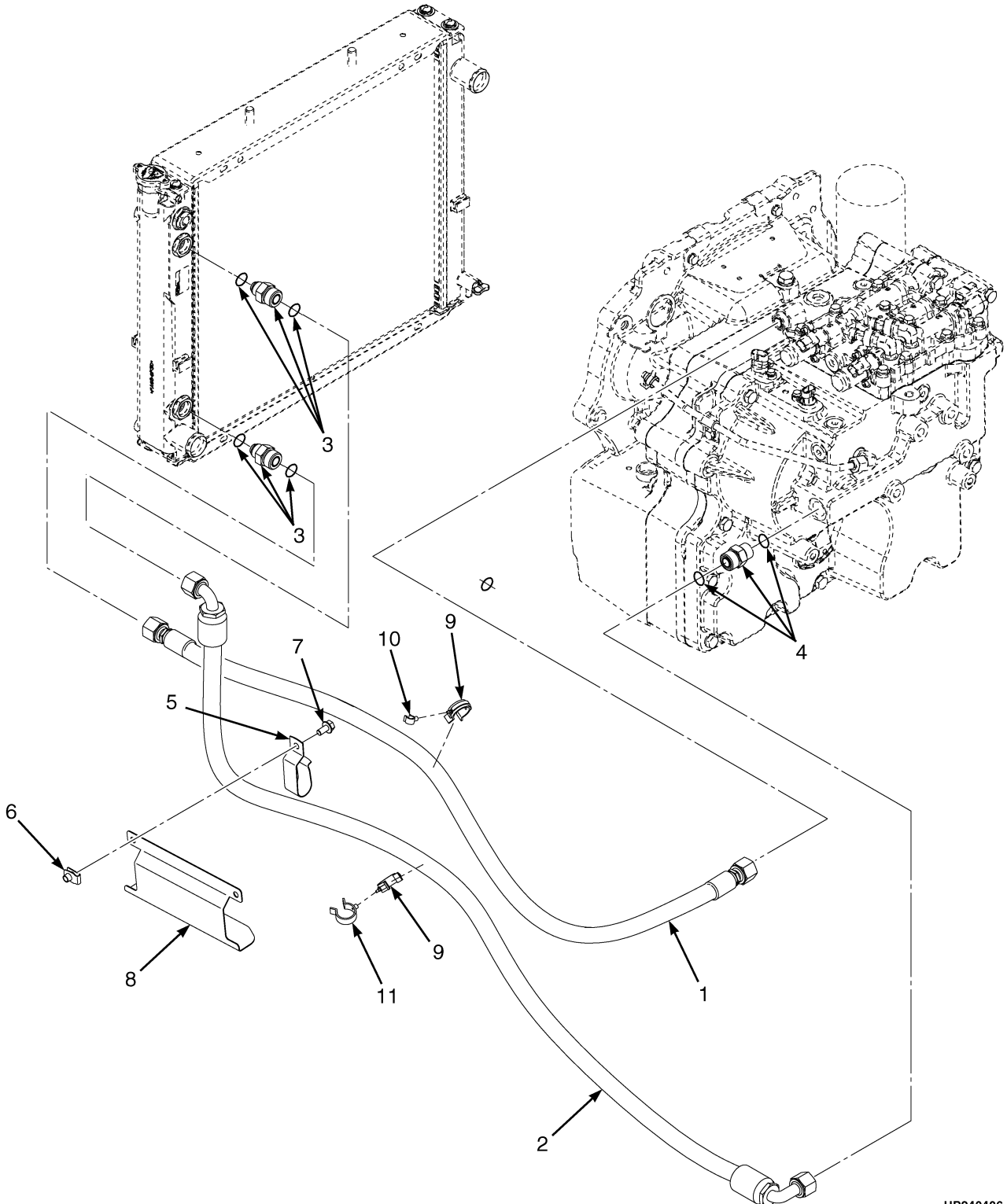
HP240482

**KEY:**

- A: For Use With Mazda Engines**
- B: For Use With GM Engines**
- C: For Use With Yanmar Diesel Engines**

ITEM	PART NO.	DESCRIPTION	QTY		
			A	B	C
1	1553122	Torque Converter.....	1	..	..
1	1553125	Torque Converter.....	..	1	..
1	1553123	Torque Converter.....	..	..	1
2	296420	Washer .....	4	4	4
3	1541921	Capscrew.....	4	..	4
3	309740	Capscrew.....	..	4	..

## TRANSMISSION COOLING (Figure 5-3) MAZDA 2.0L AND 2.2L, LPG SERPENTINE AND SQUARE WAVE WITHOUT AIR COOLER



HP240486

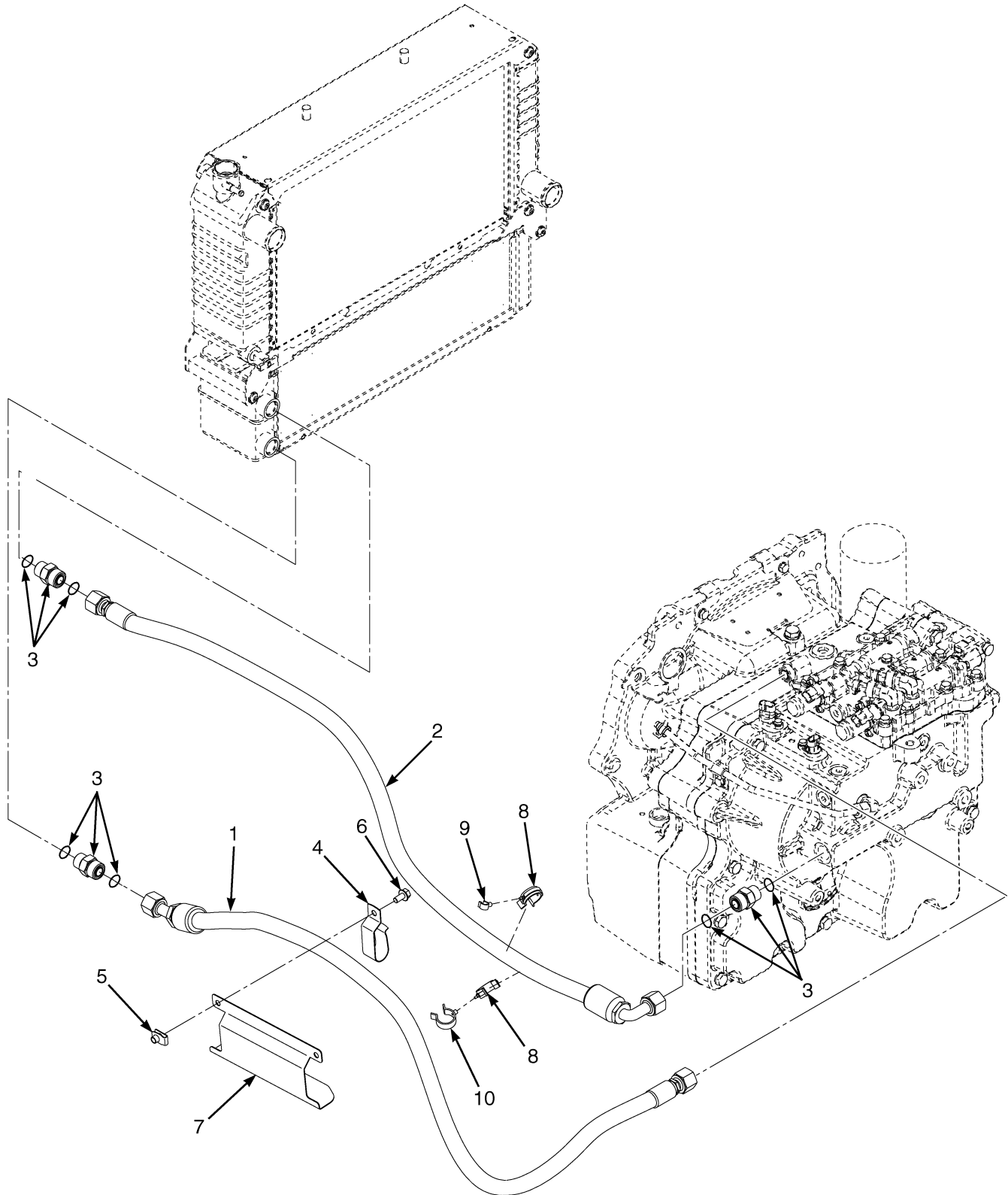
**TRANSMISSION COOLING**  
**MAZDA 2.0L AND 2.2L, LPG**  
**SERPENTINE AND SQUARE WAVE WITHOUT AIR COOLER**

**KEY:****A: With Serpentine Radiator****B: With Square Wave Radiator, Without Air Oil Cooler**

ITEM	PART NO.	DESCRIPTION	QTY	
			A	B
1	2075249	Hose .....	1	1
1	2075844	Hose .....	..	..
2	2070227	Hose .....	1	1
2	2075846	Hose .....	..	..
3	<b>a</b> 1565127	Fitting.....	..	2
3	16484	O-Ring.....	..	2
3	252729	O-Ring.....	..	2
4	1486749	Fitting.....	1	1
4	16485	O-Ring.....	1	1
4	252729	O-Ring.....	1	1
5	1562648	Clip .....	2	2
6	1480237	Clip Nut.....	2	2
7	1527879	Capscrew.....	2	2
8	2075787	Heat Shield .....	1	1
9	1569465	Clamp .....	2	2
10	1561871	Clamp (Swivel).....	1	1
11	1542436	Clamp .....	1	1

**FOOTNOTES:****a** Fittings And O-Rings Supplied With Serpentine Radiator.

## TRANSMISSION COOLING (Figure 5-4) MAZDA 2.0L AND 2.2L/GM 2.4L, LPG SQUARE WAVE WITH AIR OIL COOLER

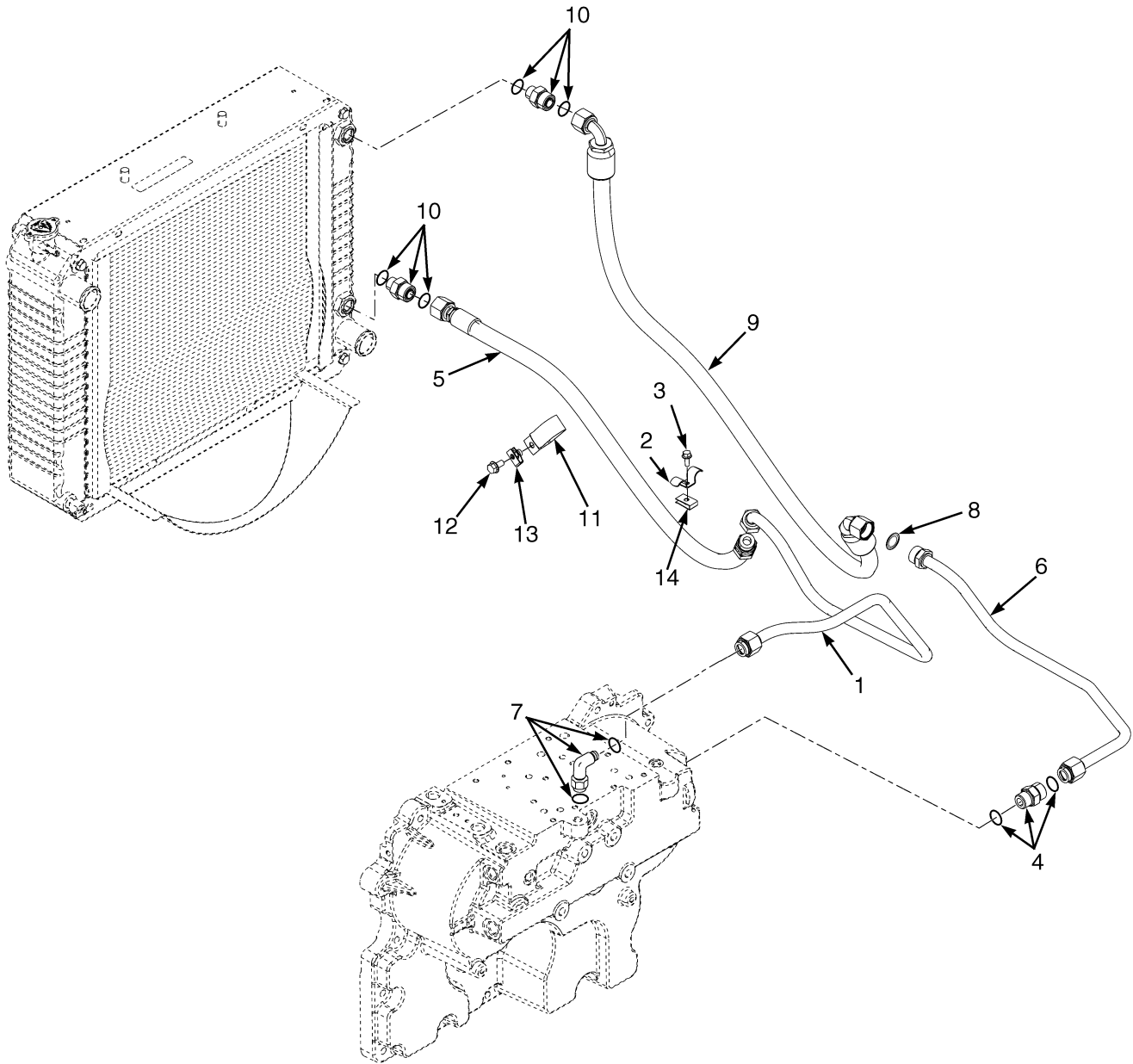


HP240485

**TRANSMISSION COOLING  
MAZDA 2.0L AND 2.2L/GM 2.4L, LPG  
SQUARE WAVE WITH AIR OIL COOLER**

ITEM	PART NO.	DESCRIPTION	QTY
1	2075844	Hose .....	1
2	2075846	Hose .....	1
3	1486749	Fitting.....	3
3	16485	O-Ring .....	3
3	252729	O-Ring .....	3
4	1562648	Clip .....	1
5	1480237	Clip Nut.....	1
6	1527879	Capscrew.....	1
7	2075787	Heat Shield .....	1
8	1569465	Clamp .....	2
9	1561871	Clamp (Swivel).....	1
10	1542436	Clamp .....	1

## TRANSMISSION COOLING (Figure 5-5) YANMAR 2.6L AND 3.3L DIESEL

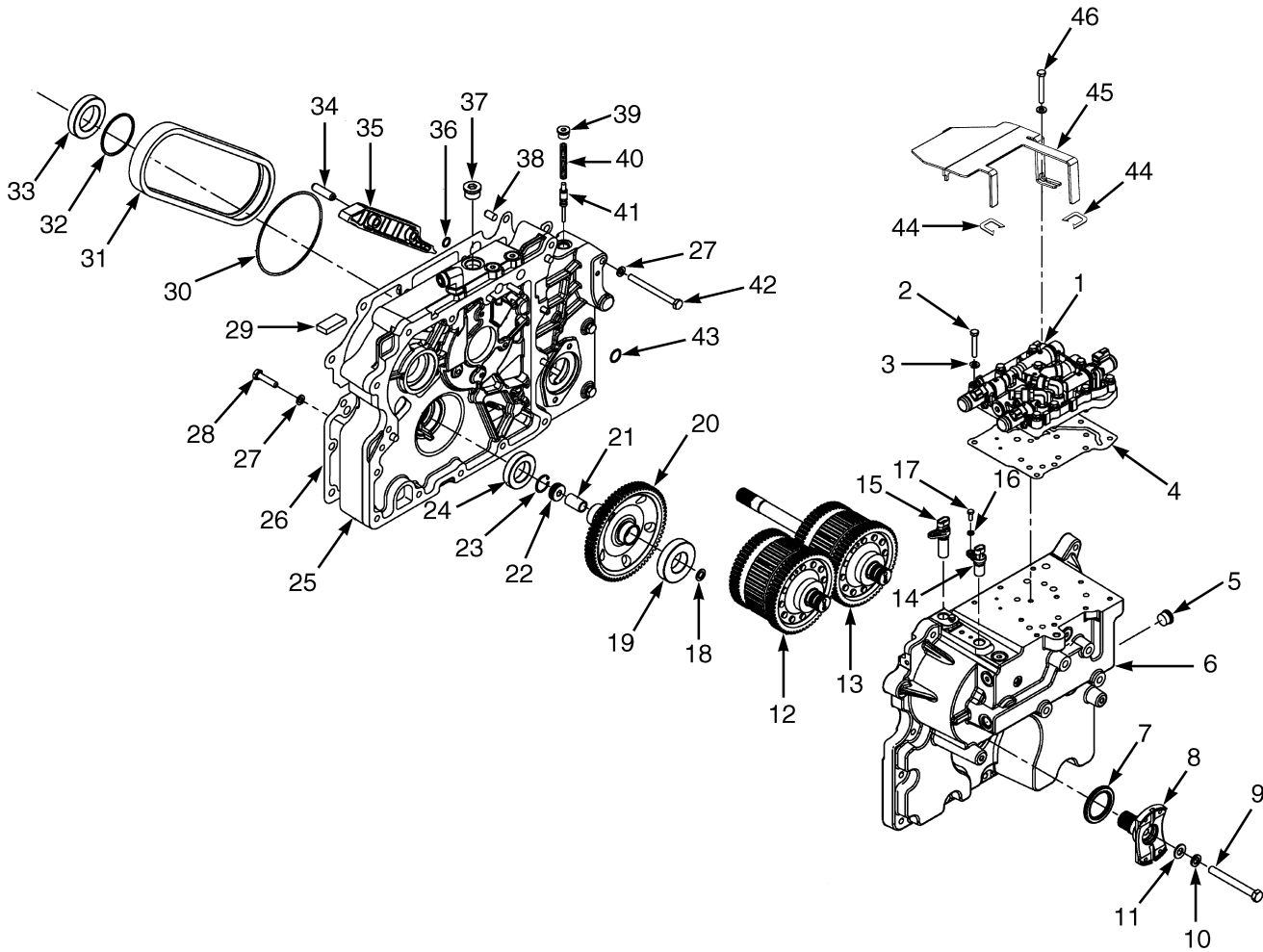


HP240498

**TRANSMISSION COOLING  
YANMAR 2.6L AND 3.3L  
DIESEL**

ITEM	PART NO.	DESCRIPTION	QTY
1	2067598	Tube .....	1
2	1561780	Clip .....	1
3	1527876	Capscrew.....	1
4	1486749	Fitting.....	1
4	16485	O-Ring .....	1
4	252729	O-Ring .....	1
5	2070228	Hose .....	1
6	2067597	Tube .....	1
7	1487067	Fitting.....	1
7	252729	O-Ring .....	1
7	16485	O-Ring .....	1
8	1582449	Flange Seal .....	1
9	2075551	Hose .....	1
10	1565127	Fitting.....	2
10	16484	O-Ring .....	2
10	252729	O-Ring .....	2
11	1562648	Clip .....	1
12	1527879	Capscrew.....	1
13	1480237	Clip Nut.....	1
14	1350215	Nut (Foldover).....	1

## TRANSMISSION (Figure 5-6) SINGLE SPEED SHEET 1 OF 2



HP240493

## TRANSMISSION SINGLE SPEED SHEET 1 OF 2

ITEM	PART NO.	DESCRIPTION	QTY
	a 1550565	Transmission Assembly .....	1
	c 1591261	Transmission Assembly (Dual Speed) .....	1
1	1570361	Control Valve (☞ Figure 5-15) .....	1
2	292509	Capscrew .....	11
3	320157	Washer .....	12
4	1570360	Gasket .....	1
5	233693	Fitting.....	1
5	16485	O-Ring.....	1
6	1550577	Housing (Transmission).....	1
7	1547447	Oil Seal.....	1
8	1550578	Yoke (24 Tooth) .....	1
9	18595	Capscrew .....	1
10	15158	Lockwasher .....	1
11	15135	Washer .....	1
12	1595421	Clutch Pack Assembly (Counter/Reverse) (☞ Figure 5-9) .....	1
13	1595420	Clutch Pack Assembly (Input/Forward) (☞ Figure 5-8) .....	1
14	1541231	Sensor (Speed) .....	1
15	1541232	Sensor .....	1
16	292680	Lockwasher .....	2
17	292500	Capscrew .....	2
18	86229	Washer .....	1
19	43208	Bearing.....	1
20	1585745	Gear (Output) .....	1
21	1516851	Spacer.....	1
22	1516849	Nut.....	1
23	58916	Snap Ring.....	1
24	44308	Ball Bearing.....	1
25	1550575	Housing (Front Cover) .....	1
26	1550576	Gasket (Cover To Transmission Housing) .....	1
27	292682	Lockwasher .....	24
28	292516	Capscrew .....	4
29	334560	Magnet .....	1
30	16682	O-Ring.....	1
31	1494750	Chain (Drive Pump).....	1
32	1544218	Sealing Ring.....	1
33	44310	Ball Bearing.....	1
34	303100	Pin .....	4
35	1553270	Snubber.....	2
36	1553475	O-Ring.....	1
37	222444	Fitting.....	1
37	16486	O-Ring.....	1
38	303150	Pin .....	4
39	235691	Fitting.....	7
39	16484	O-Ring.....	1
40	1525693	Compression Spring (Regulator).....	1
41	1525692	Spool (Regulator) .....	1
42	1359458	Capscrew .....	16
43	1553403	O-Ring.....	4
44	1380849	Trim.....	2
45	1569768	Shield .....	1

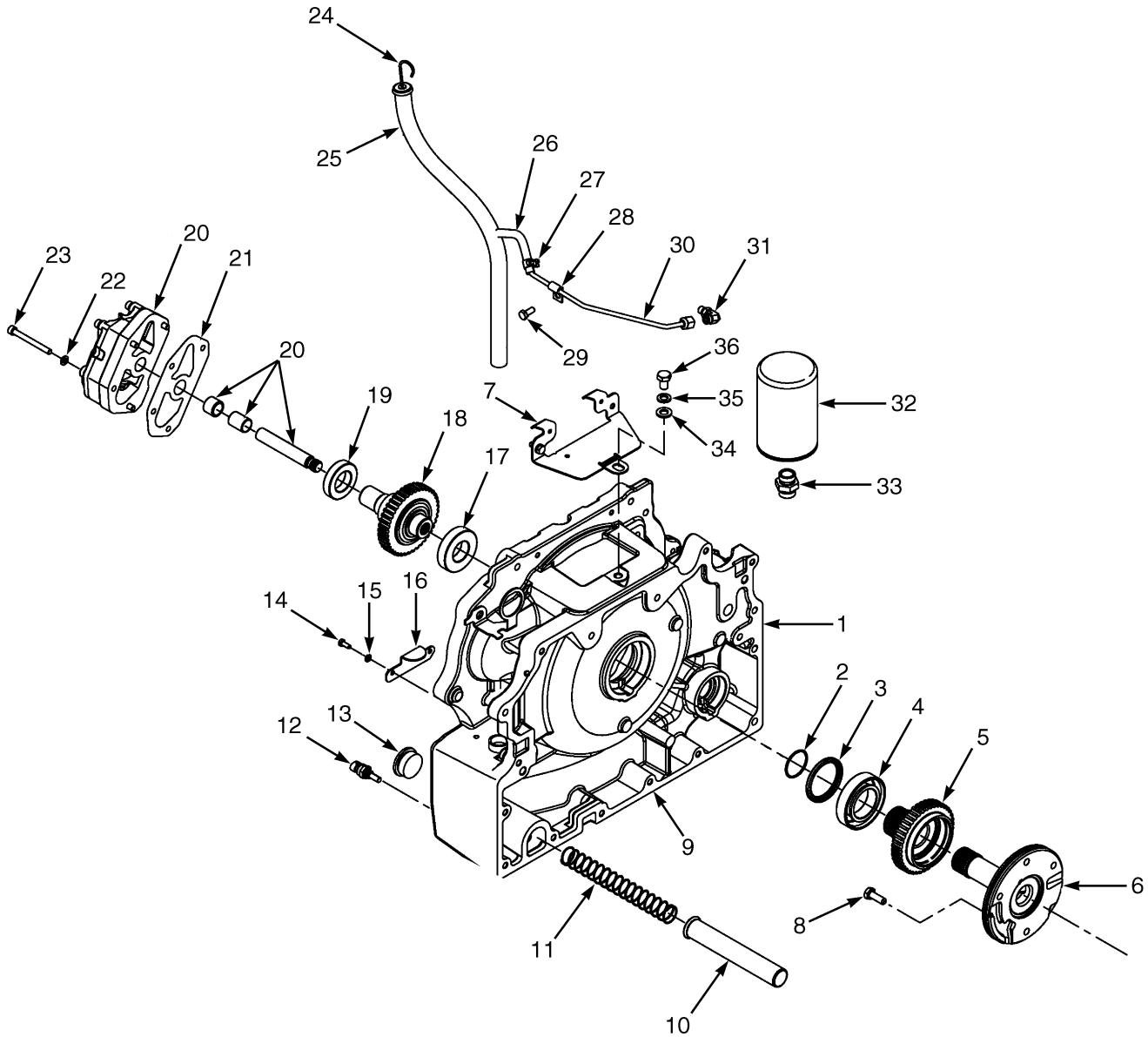
## TRANSMISSION SINGLE SPEED SHEET 1 OF 2

ITEM	PART NO.	DESCRIPTION	QTY
46	1527879	Capscrew .....	1
	<b>b</b> 1566457	Baffle .....	1

**FOOTNOTES:**

- a** Dry Brakes
- b** Not Illustrated
- c** Wet Brakes

## TRANSMISSION (Figure 5-7) SINGLE SPEED SHEET 2 OF 2



HP240494

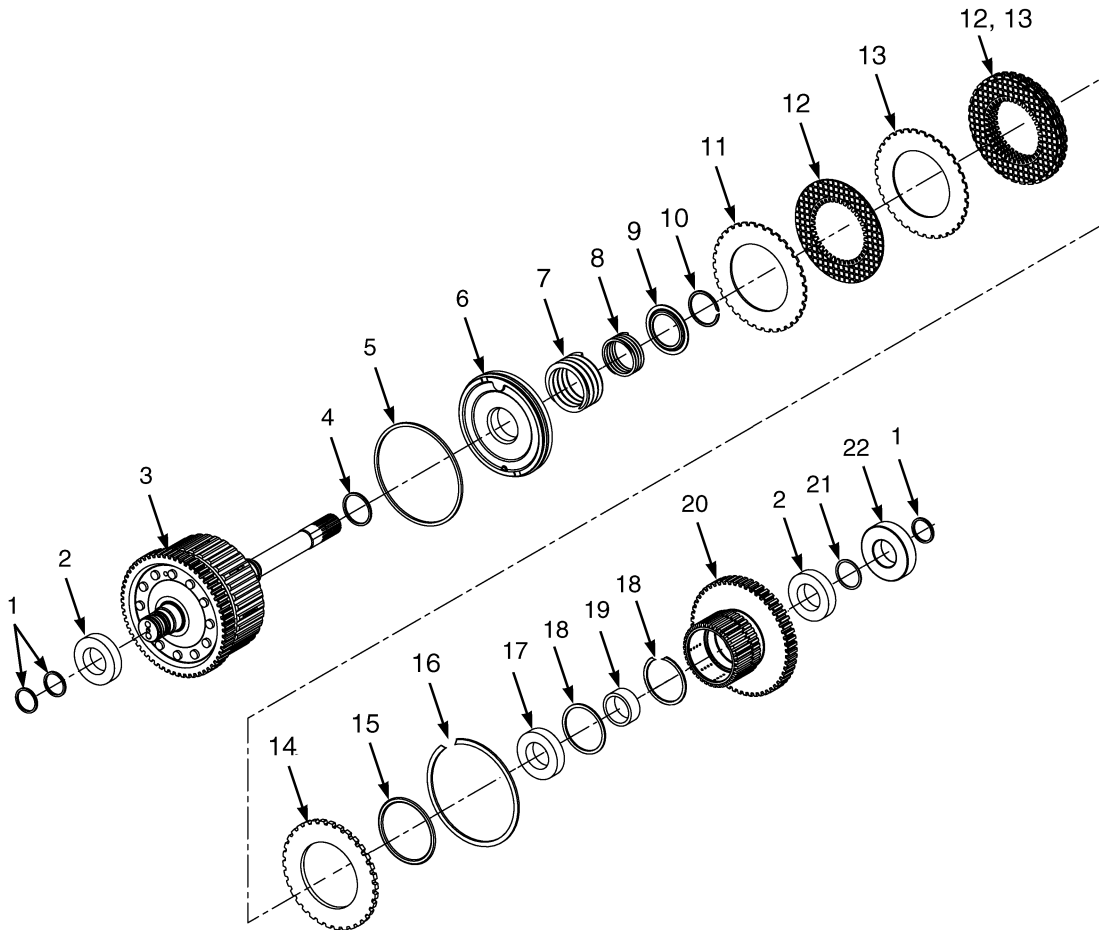
## TRANSMISSION SINGLE SPEED SHEET 2 OF 2

ITEM	PART NO.	DESCRIPTION	QTY
	<b>a</b> 1550565	Transmission Assembly .....	1
	<b>b</b> 1591261	Transmission Assembly (Dual Speed) .....	1
1	1550566	Housing (Torque Convertor) .....	1
2	145481	O-Ring .....	1
3	1544217	Oil Seal .....	1
4	1544216	Bearing .....	1
5	1541556	Sprocket .....	1
6	1550585	Stator Assembly .....	1
6	1516826	Bushing .....	1
7	1566169	Cover .....	1
8	136985	Capscrew .....	4
9	1550573	Gasket .....	1
10	1550571	Screen (Suction) .....	1
11	1550572	Spring (Suction Screen) .....	1
12	1515654	Sensor (Coolant Temperature) .....	1
13	188210	Fitting .....	1
13	16983	O-Ring .....	1
14	292500	Capscrew .....	2
15	292680	Lockwasher .....	2
16	1550567	Cover (Torque Convertor Housing) .....	1
17	43207	Ball Bearing .....	1
18	1550574	Sprocket (Driven) .....	1
19	44307	Bearing .....	1
20	<b>a</b> 1529894	Charge Pump (20.5 CC/REV) .....	1
20	<b>b</b> 1552853	Charge Pump (27.0 CC/REV) .....	1
21	1525696	Gasket (Charge Pump) .....	1
22	292681	Lockwasher .....	7
23	296022	Capscrew .....	4
24	1516818	Dipstick .....	1
25	1566166	Tube (Dipstick) .....	1
26	169690	Hose .....	1
27	1569616	Clamp .....	2
28	164488	Clamp .....	1
29	136681	Capscrew .....	3
30	1566168	Tube .....	1
31	1487063	Fitting .....	1
31	16483	O-Ring .....	1
32	2075558	Filter .....	1
33	1558515	Fitting .....	1
34	320161	Washer .....	1
35	292683	Lockwasher .....	1
36	292526	Capscrew .....	1

**FOOTNOTES:**

- a** Dry Brakes
- b** Wet Brakes

## FORWARD CLUTCH (Figure 5-8) SINGLE SPEED TRANSMISSION

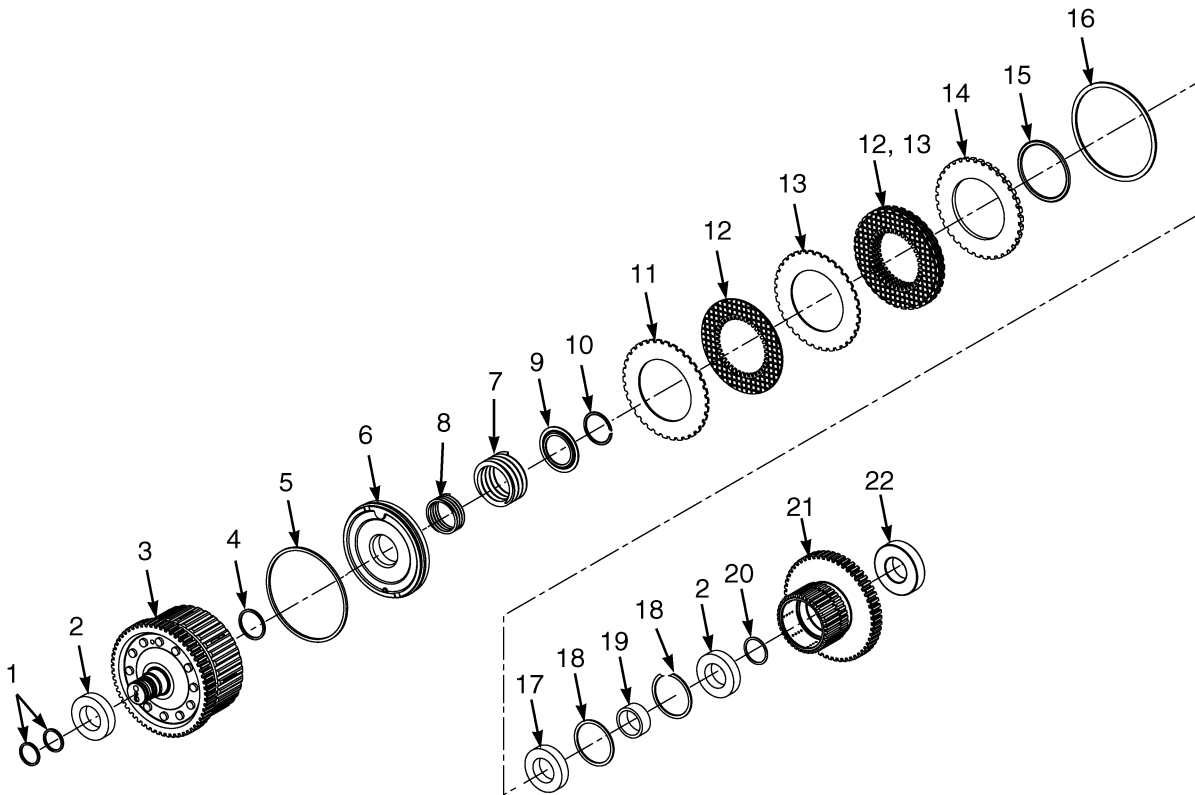


BP240049

**FORWARD CLUTCH  
SINGLE SPEED TRANSMISSION**

ITEM	PART NO.	DESCRIPTION	QTY
	1595420	Clutch Pack Assembly (Input/Forward).....	1
1	.....	Ring Seal.....	3
2	1581116	Bearing.....	2
3	1581104	Gear and Shaft Assembly .....	1
4	.....	Ring Seal.....	1
5	.....	Ring Seal.....	1
6	1552525	Piston .....	1
7	1581108	Spring.....	1
8	1581098	Spring.....	1
9	1581099	Spring Guide .....	1
10	1581100	Snap Ring.....	1
11	.....	Conical Plate .....	1
12	.....	Friction Plate .....	5
13	.....	Separator Plate .....	4
14	1543094	Pressure Plate (5.8 mm) .....	1
14	1537449	Pressure Plate (6.0 mm) .....	1
14	1543096	Pressure Plate (5.6 mm) .....	1
14	1543097	Pressure Plate (5.4 mm) .....	1
14	1543098	Pressure Plate (5.2 mm) .....	1
15	.....	O-Ring.....	1
16	1537450	Snap Ring.....	1
17	124603	Bearing.....	1
18	1581107	Snap Ring.....	2
19	1581117	Spacer .....	1
20	1595427	Clutch Gear .....	1
21	1581106	Snap Ring.....	1
22	43207	Ball Bearing.....	1
	1595426	Clutch Plates and Seals Kit (Includes Items 1, 4-5, 11-13, 15) .....	1
	1543102	Clutch Pack Plates Kit (Includes Items 11-13).....	1
	1595425	Clutch Pack Seals Kit (Includes Items 1, 4-5, 15).....	1

## REVERSE CLUTCH (Figure 5-9) SINGLE SPEED TRANSMISSION

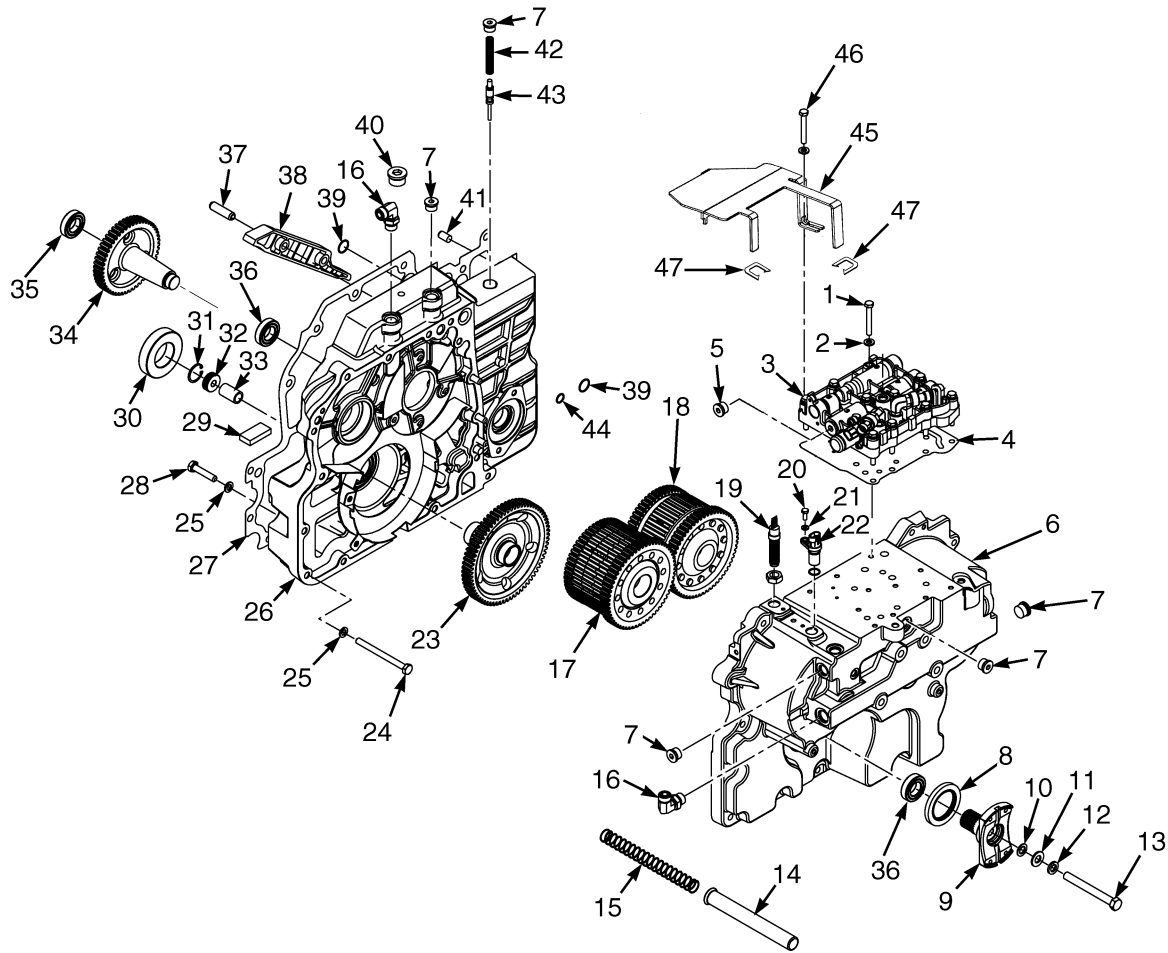


BP240051

**REVERSE CLUTCH  
SINGLE SPEED TRANSMISSION**

ITEM	PART NO.	DESCRIPTION	QTY
	1595421	Clutch Pack Assembly (Counter/Reverse).....	1
1	.....	Seal.....	2
2	1581116	Bearing.....	2
3	1581114	Gear and Shaft Assembly.....	1
4	.....	Seal.....	1
5	.....	Seal.....	1
6	1552525	Piston.....	1
7	1581108	Spring.....	1
8	1581098	Spring.....	1
9	1581099	Spring Guide.....	1
10	1581100	Snap Ring.....	1
11	.....	Conical Plate.....	1
12	.....	Friction Plate.....	5
13	.....	Separator Plate.....	4
14	1543094	Pressure Plate (5.8 mm).....	1
14	1537449	Pressure Plate (6.0 mm).....	1
14	1543096	Pressure Plate (5.6 mm).....	1
14	1543097	Pressure Plate (5.4 mm).....	1
14	1543098	Pressure Plate (5.2 mm).....	1
15	.....	O-Ring.....	1
16	1537450	Snap Ring.....	1
17	124603	Bearing.....	1
18	1581107	Snap Ring.....	1
19	1581117	Spacer.....	1
20	1581106	Snap Ring.....	1
21	1595427	Clutch Gear.....	1
22	43207	Ball Bearing.....	1
	1595426	Clutch Plates and Seals Kit (Includes Items 1, 4-5, 11-13, 15).....	1
	1543102	Clutch Pack Plates Kit (Includes Items 11-13).....	1
	1595425	Clutch Pack Seals Kit (Includes Items 1, 4-5, 15).....	1

## TRANSMISSION (Figure 5-10) DUAL SPEED SHEET 1 OF 2



HP240491

**TRANSMISSION  
DUAL SPEED  
SHEET 1 OF 2**

ITEM	PART NO.	DESCRIPTION	QTY
	<b>a</b> 1529896	Transmission Assembly (Dual Speed) .....	1
	<b>b</b> 1593993	Transmission Assembly (Single Speed) .....	1
1	292509	Capscrew .....	11
2	320157	Washer .....	12
3	1570361	Control Valve (☞ Figure 5-15) .....	1
4	1570360	Gasket (Control Valve) .....	1
5	233693	Fitting.....	1
5	16485	O-Ring.....	1
6	1570362	Housing (Transmission).....	1
7	235691	Fitting.....	7
7	16484	O-Ring.....	7
8	1547447	Oil Seal.....	1
9	1550584	Yoke (27 Tooth).....	1
10	86229	Washer .....	1
11	15135	Washer .....	1
12	15158	Lockwasher .....	1
13	18595	Capscrew .....	1
14	1550571	Screen (Suction).....	1
15	1550572	Spring (Suction Screen) .....	1
16	1487067	Fitting.....	1
16	16485	O-Ring.....	1
17	1595423	Clutch Pack Assembly (Counter/Reverse) (☞ Figure 5-13) .....	1
18	1595424	Clutch Pack Assembly (Forward-High) (☞ Figure 5-12) .....	1
19	1541232	Sensor .....	1
20	292500	Capscrew .....	2
21	292680	Lockwasher .....	2
22	1541231	Sensor (Speed) .....	1
23	1565135	Gear (Output) .....	1
24	1359458	Capscrew .....	16
25	292682	Lockwasher .....	23
26	1550581	Housing (Front Cover) .....	1
27	1550582	Gasket (Cover To Transmission Housing) .....	1
28	292516	Capscrew .....	3
29	334560	Magnet .....	1
30	44309	Bearing (Charge Pump) .....	1
31	213099	Snap Ring.....	1
32	1525686	Nut.....	1
33	1516851	Spacer .....	1
34	1585750	Gear (Idler).....	1
35	44306	Ball Bearing.....	1
36	43209	Ball Bearing.....	1
37	303100	Pin .....	4
38	1553270	Snubber.....	2
39	1553475	O-Ring .....	1
40	222444	Fitting.....	1
40	16486	O-Ring.....	1
41	303150	Pin .....	4
42	1525693	Compression Spring (Regulator).....	1
43	1525692	Spool (Regulator) .....	1
44	1553403	O-Ring.....	1

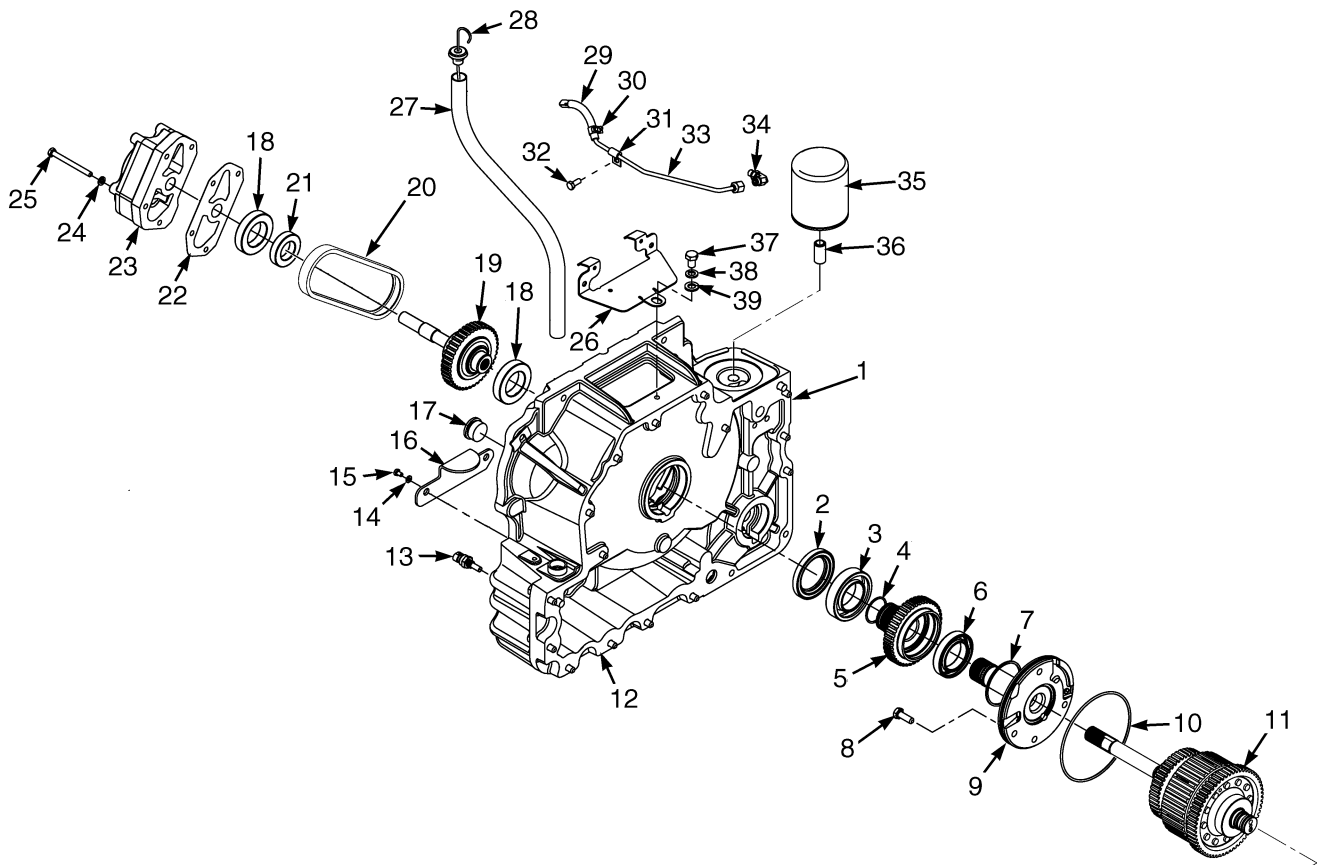
## TRANSMISSION DUAL SPEED SHEET 1 OF 2

ITEM	PART NO.	DESCRIPTION	QTY
45	1569768	Shield .....	1
46	1527879	Capscrew .....	1
47	1380849	Trim.....	2
	1566457	Baffle (Not Illustrated).....	1

**FOOTNOTES:**

- a** Dry Brakes
- b** Wet Brakes

## TRANSMISSION (Figure 5-11) DUAL SPEED SHEET 2 OF 2



HP240492

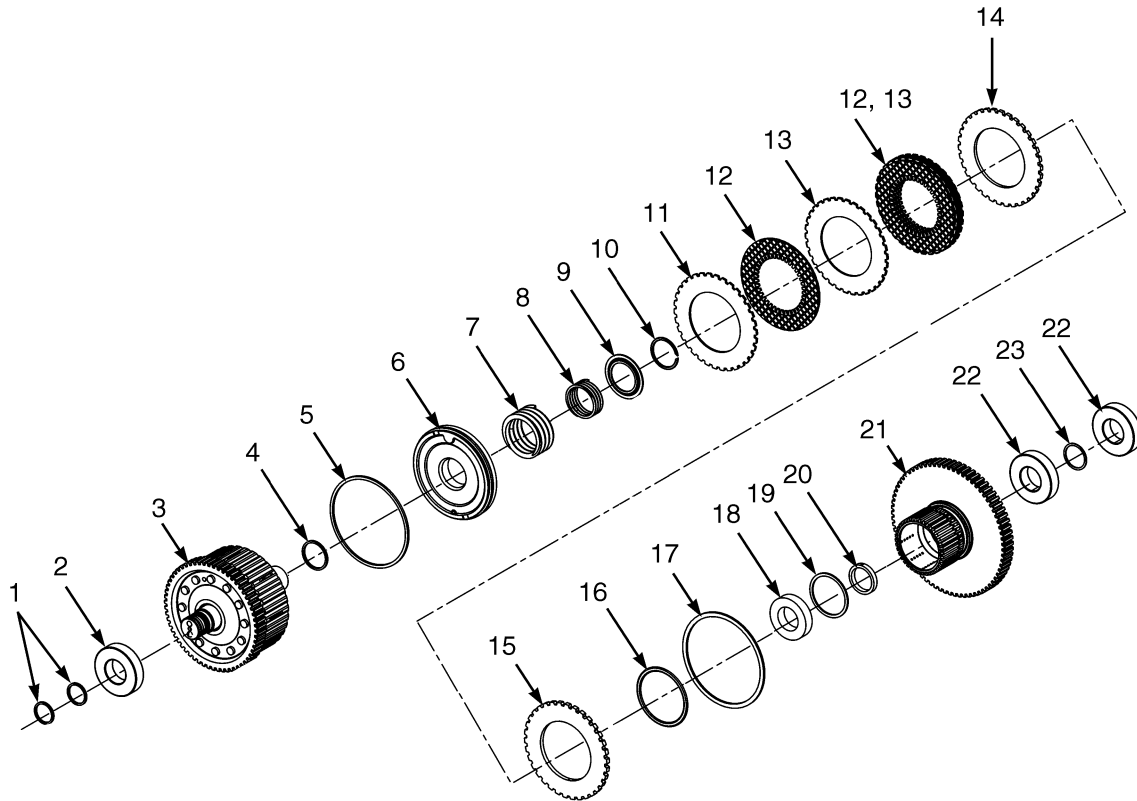
## TRANSMISSION DUAL SPEED SHEET 2 OF 2

ITEM	PART NO.	DESCRIPTION	QTY
	<b>a</b> 1529896	Transmission Assembly (Dual Speed) .....	1
	<b>b</b> 1593993	Transmission Assembly (Single Speed) .....	1
1	1550566	Housing (Torque Convertor) .....	1
2	1544217	Oil Seal .....	1
3	44310	Ball Bearing .....	1
4	145481	O-Ring .....	1
5	1541556	Sprocket .....	1
6	1544216	Bearing .....	1
7	1544218	Sealing Ring .....	1
8	136985	Capscrew .....	4
9	1525677	Stator Assembly .....	1
9	1516826	Bushing .....	1
10	16682	O-Ring .....	1
11	1595422	Clutch Pack Assembly (Input/Forward-Low) (☞ Figure 5-14) .....	1
12	1550573	Gasket (Torque Convertor Housing To Cover) .....	1
13	1515654	Sensor (Coolant Temperature) .....	1
14	292680	Lockwasher .....	2
15	292500	Capscrew .....	2
16	1550567	Cover (Torque Convertor Housing).....	1
17	188210	Fitting.....	1
17	16983	O-Ring.....	1
18	43209	Ball Bearing.....	1
19	1550580	Sprocket (Driven).....	1
20	1494750	Chain (Drive Pump).....	1
21	44307	Bearing.....	1
22	1525696	Gasket (Charge Pump) .....	1
23	<b>a</b> 1552853	Charge Pump (27.0 CC/REV) .....	1
23	<b>b</b> 2073470	Charge Pump (32.4 CC/REV Without Boost).....	1
23	<b>b</b> 2076527	Charge Pump (32.4 CC/REV With Boost).....	1
24	292681	Lockwasher .....	7
25	296022	Capscrew .....	4
26	1566169	Cover.....	1
27	1566166	Tube (Dipstick).....	1
28	1516818	Dipstick.....	1
29	169690	Hose .....	1
30	1569616	Clamp.....	2
31	164488	Clamp.....	1
32	136681	Capscrew .....	3
33	1566168	Tube.....	1
34	1487063	Fitting.....	1
34	16483	O-Ring.....	1
35	2075558	Filter .....	1
36	1558515	Fitting.....	1
37	292526	Capscrew .....	1
38	292683	Lockwasher .....	1
39	320161	Washer .....	1

**FOOTNOTES:**

- a** Dry Brakes  
**b** Wet Brakes

## FORWARD CLUTCH, HIGH (Figure 5-12) DUAL SPEED TRANSMISSION

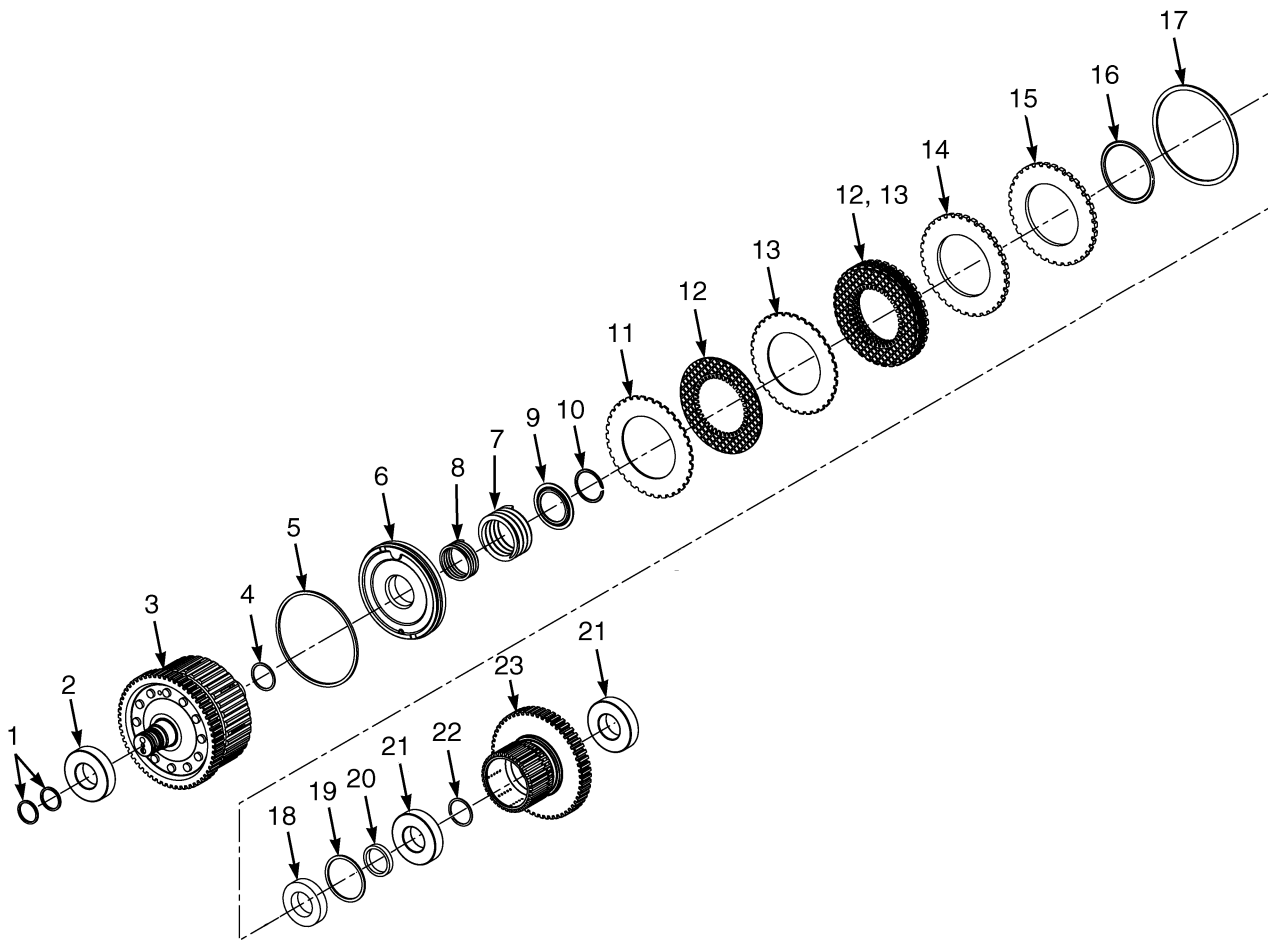


BP240053

**FORWARD CLUTCH, HIGH  
DUAL SPEED TRANSMISSION**

ITEM	PART NO.	DESCRIPTION	QTY
	1595424	Clutch Pack Assembly (Forward-High) .....	1
1	.....	Seal .....	2
2	1537455	Bearing (Ball) .....	1
3	1581097	Gear and Shaft Assembly .....	1
4	.....	Seal .....	1
5	.....	Seal .....	1
6	1552525	Piston .....	1
7	1581108	Spring .....	1
8	1581098	Spring .....	1
9	1581099	Spring Guide .....	1
10	1581100	Snap Ring .....	1
11	.....	Conical Plate .....	1
12	.....	Friction Plate .....	5
13	.....	Separator Plate .....	4
14	1543094	Pressure Plate (5.8 mm) .....	1
14	1537449	Pressure Plate (6.0 mm) .....	1
14	1543096	Pressure Plate (5.6 mm) .....	1
14	1543097	Pressure Plate (5.4 mm) .....	1
14	1543098	Pressure Plate (5.2 mm) .....	1
15	1581109	Back Plate .....	1
16	.....	O-Ring .....	1
17	1537450	Snap Ring .....	1
18	124603	Bearing .....	1
19	1581107	Snap Ring .....	1
20	1581105	Spacer .....	1
21	1595430	Clutch Gear .....	1
22	43207	Ball Bearing .....	1
23	1581106	Snap Ring .....	1
	1595426	Clutch Plates and Seals Kit (Includes Items 1, 4-5, 11-13, 16) .....	1
	1543102	Clutch Pack Plates Kit (Includes Items 11-13) .....	1
	1595425	Clutch Pack Seals Kit (Includes Items 1, 4-5, 16) .....	1

## REVERSE CLUTCH (Figure 5-13) DUAL SPEED TRANSMISSION

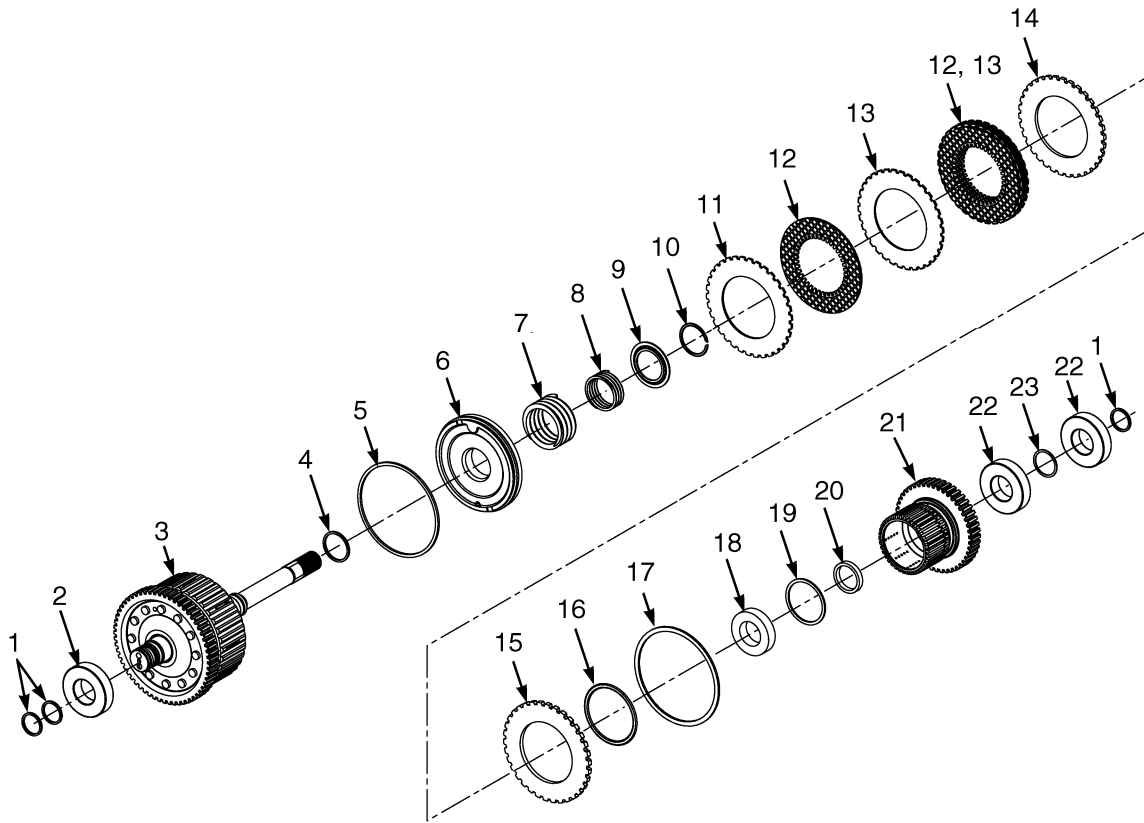


BP240052

**REVERSE CLUTCH  
DUAL SPEED TRANSMISSION**

ITEM	PART NO.	DESCRIPTION	QTY
	1595423	Clutch Pack Assembly (Counter/Reverse).....	1
1	.....	Seal.....	2
2	2029343	Bearing.....	2
3	1581097	Gear and Shaft Assembly .....	1
4	.....	Seal.....	1
5	.....	Seal.....	1
6	1552525	Piston .....	1
7	1581108	Spring.....	1
8	1581098	Spring.....	1
9	1581099	Spring Guide .....	1
10	1581100	Snap Ring.....	1
11	.....	Conical Plate .....	1
12	.....	Friction Plate .....	5
13	.....	Separator Plate .....	4
14	1543094	Pressure Plate (5.8 mm) .....	1
14	1537449	Pressure Plate (6.0 mm) .....	1
14	1543096	Pressure Plate (5.6 mm) .....	1
14	1543097	Pressure Plate (5.4 mm) .....	1
14	1543098	Pressure Plate (5.2 mm) .....	1
15	1581109	Back Plate .....	1
16	.....	O-Ring.....	1
17	1537450	Snap Ring.....	1
18	124603	Bearing.....	1
19	1581107	Snap Ring.....	1
20	1581105	Spacer .....	1
21	43207	Ball Bearing.....	2
22	1581106	Snap Ring.....	1
23	1595429	Clutch Gear .....	1
	1595426	Clutch Plates and Seals Kit (Includes Items 1, 4-5, 11-13, 16) .....	1
	1543102	Clutch Pack Plates Kit (Includes Items 11-13).....	1
	1595425	Clutch Pack Seals Kit (Includes Items 1, 4-5, 16).....	1

## INPUT CLUTCH, LOW (Figure 5-14) DUAL SPEED TRANSMISSION

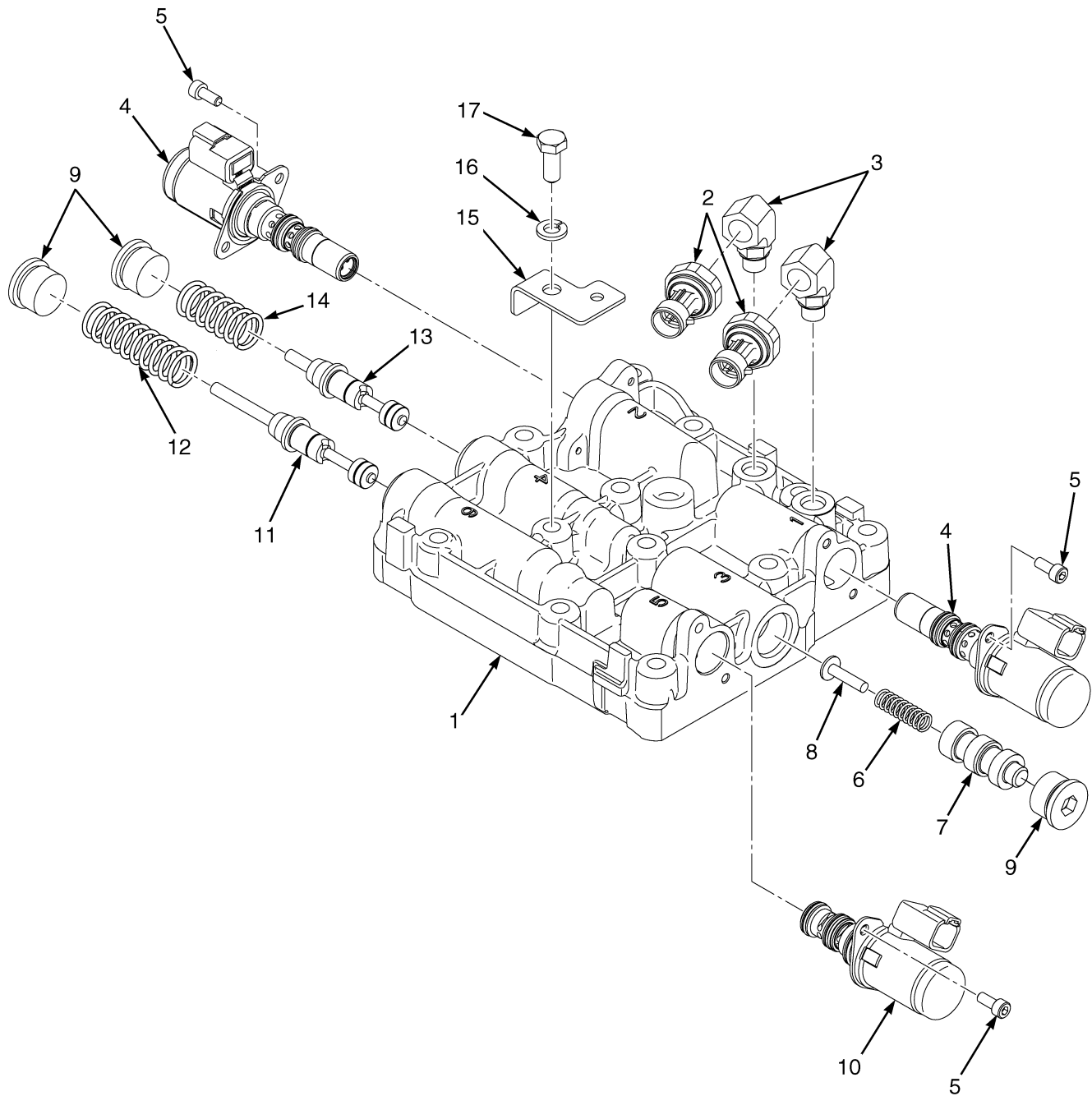


BP240050

**INPUT CLUTCH, LOW  
DUAL SPEED TRANSMISSION**

ITEM	PART NO.	DESCRIPTION	QTY
	1595422	Clutch Pack Assembly (Input/Forward-Low) .....	1
1	.....	Seal .....	3
2	2029343	Bearing .....	1
3	1581112	Gear and Shaft Assembly .....	1
4	.....	Seal .....	1
5	.....	Seal .....	1
6	1552525	Piston .....	1
7	1581108	Spring .....	1
8	1581098	Spring .....	1
9	1581099	Spring Guide .....	1
10	1581100	Snap Ring .....	1
11	.....	Conical Plate .....	1
12	.....	Friction Plate .....	5
13	.....	Separator Plate .....	4
14	1543094	Pressure Plate (5.8 mm) .....	1
14	1537449	Pressure Plate (6.0 mm) .....	1
14	1543096	Pressure Plate (5.6 mm) .....	1
14	1543097	Pressure Plate (5.4 mm) .....	1
14	1543098	Pressure Plate (5.2 mm) .....	1
15	1581109	Back Plate .....	1
16	.....	Ring .....	1
17	1537450	Snap Ring .....	1
18	124603	Bearing .....	1
19	1581107	Snap Ring .....	1
20	1581105	Spacer .....	1
21	1595428	Clutch Gear .....	1
22	43207	Ball Bearing .....	2
23	1581106	Snap Ring .....	1
	1595426	Clutch Plates and Seals Kit (Includes Items 1, 4-5, 11-13, 16) .....	1
	1543102	Clutch Pack Plates Kit (Includes Items 11-13) .....	1
	1595425	Clutch Pack Seals Kit (Includes Items 1, 4-5, 16) .....	1

## CONTROL VALVE (Figure 5-15) TRANSMISSION



BP240046

**CONTROL VALVE  
TRANSMISSION**

ITEM	PART NO.	DESCRIPTION	QTY
	1570361	Control Valve .....	1
1	1570363	Body .....	1
2	2070263	Transducer.....	2
3	1545546	Fitting.....	2
3	16481	O-Ring.....	2
4	1530722	Proportional Valve .....	2
5	293742	Capscrew .....	6
6	1590866	Spring (Return).....	1
7	1590865	Spool (Cut-Off) .....	1
8	1590839	Spool Stop.....	1
9	233693	Fitting.....	3
9	16485	O-Ring.....	3
10	1520660	Solenoid Valve.....	1
11	1544758	Spool (Torque Convertor Regulator) .....	1
12	1550561	Spring (Torque Convertor Regulator) .....	1
13	1544759	Spool (Torque Convertor Regulator) .....	1
14	1514138	Spring (Torque Convertor Regulator) .....	1
15	1562310	Clip .....	1
16	292681	Lockwasher .....	1
17	136681	Capscrew .....	1