

**TWO-STAGE LFL**

CARRIAGE  
TWO-STAGE LFL  
SIX ROLLER ..... Page 280

CYLINDER  
TWO-STAGE LFL  
H45-55XM ..... Page 276

CYLINDER  
TWO-STAGE LFL  
H60-65XM ..... Page 278

FORKS  
TWO-STAGE LFL ..... Page 290

HEADER HOSE  
TWO-STAGE LFL ..... Page 288

INNER MAST  
TWO-STAGE LFL ..... Page 272

LIFT  
TWO-STAGE LFL ..... Page 274

LOAD BACKREST EXTENSION  
TWO-STAGE LFL ..... Page 282

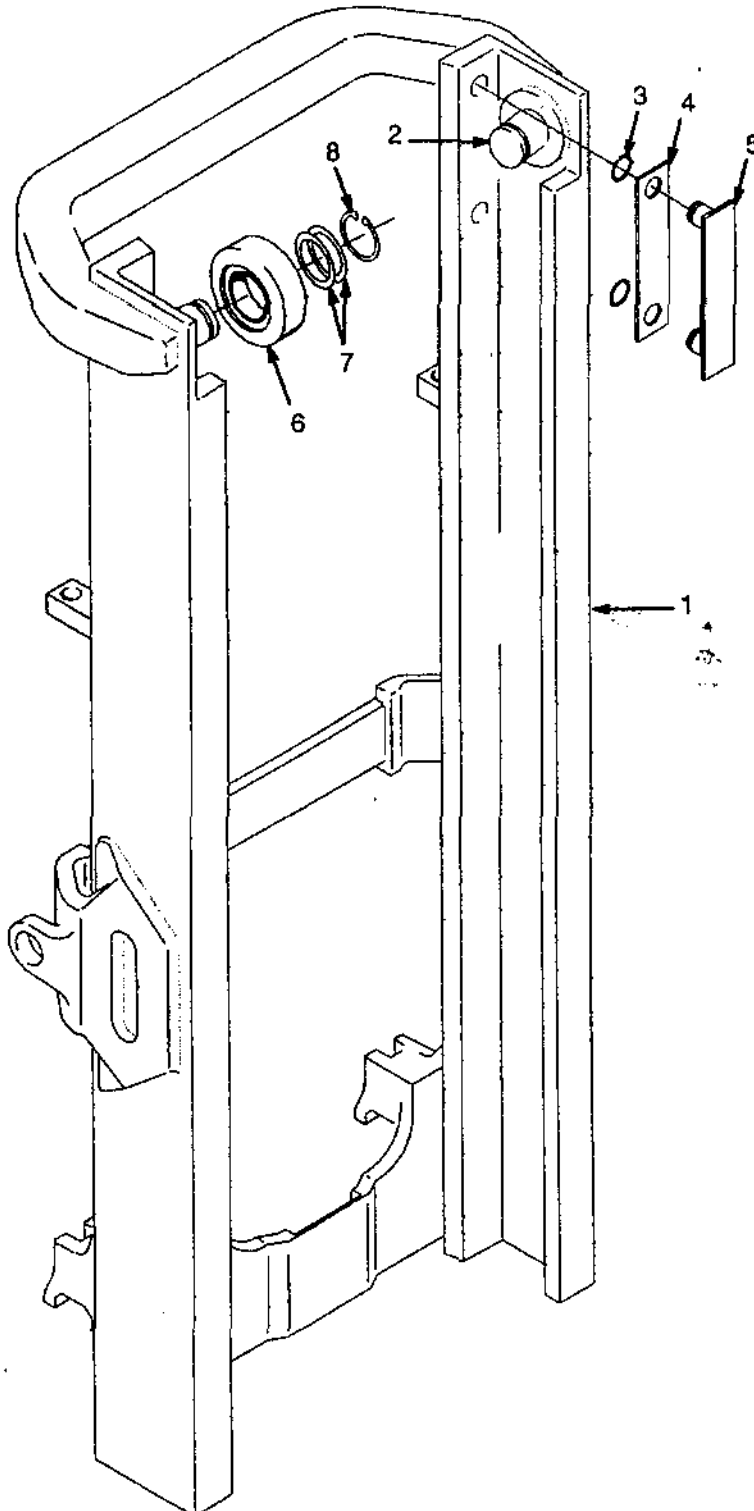
MAST INSTALLATION  
TWO-STAGE LFL ..... Page 284

MAST INSTALLATION  
TWO-STAGE LFL ..... Page 286

OUTER MAST  
TWO-STAGE LFL ..... Page 270

## OUTER MAST TWO-STAGE LFL

(Figure 120)



**OUTER MAST  
TWO-STAGE LFL**

**H45-55XM**

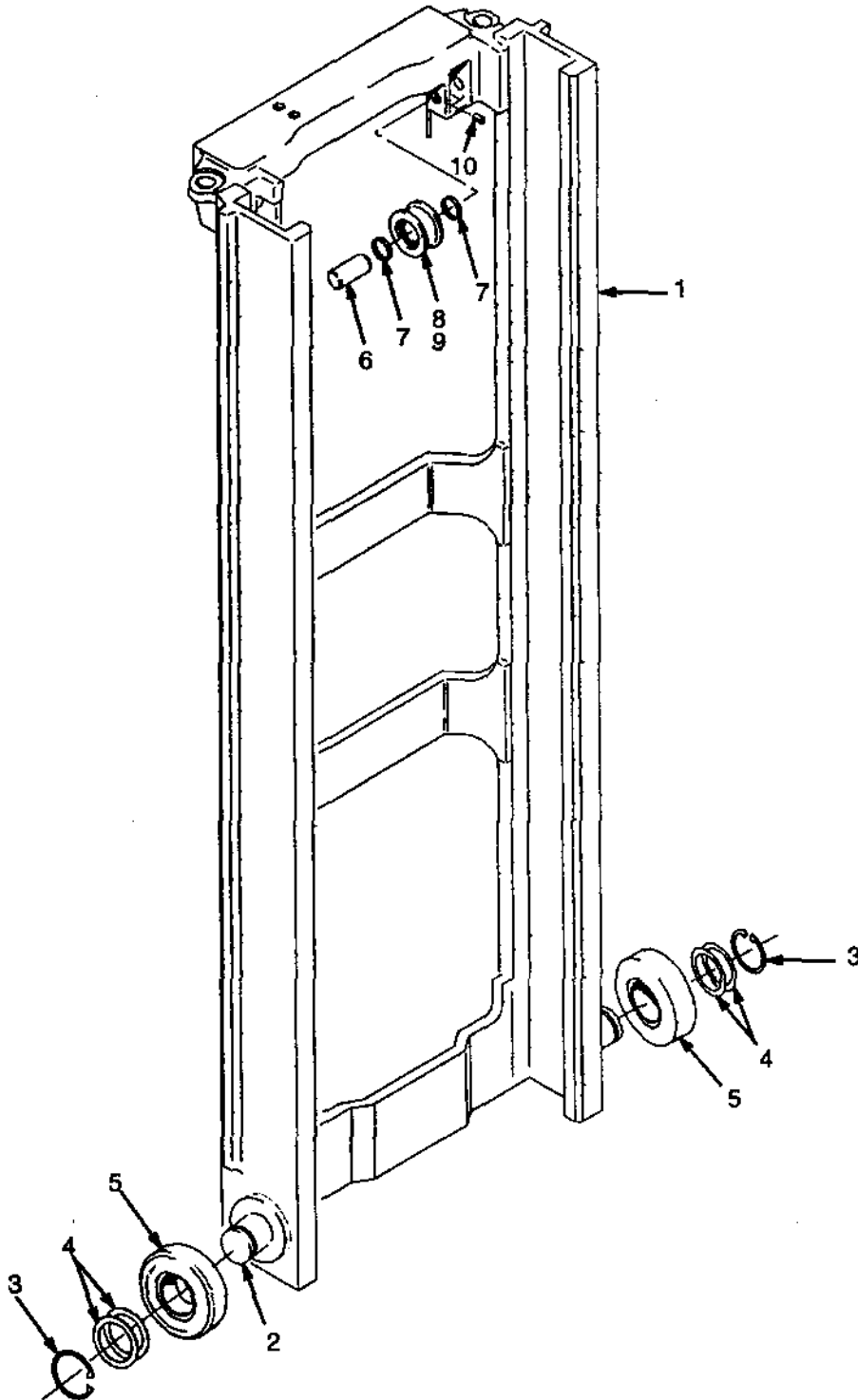
REF.	NAME OF PART 1 2 3 4	LIFT HEIGHT TO BOTTOM OF FORKS	
		2492 mm	2592 mm
	Mast Group No.	B507 2492	B507 2592
1	Outer Mast	1341000	1341001

**H60-65XM**

REF.	NAME OF PART 1 2 3 4	LIFT HEIGHT TO BOTTOM OF FORKS	
		2492 mm	2592 mm
	Mast Group No.	B562 2359	B562 2459
1	Outer Mast	1341000	1341001

REF.	PART NO.	NAME OF PART	QTY	REF.	PART NO.	NAME OF PART	QTY
*		Mast .....	1	6	1333396	Load Roller (Standard) .....	2
1 *		Outer Mast .....	1	6	1333397	Load Roller (1,52 mm) .....	2
2	1345216	Stubshaft .....	2	7	129387	Shim (0,020 in.) .....	AR
3	104506	O-Ring .....	4	8	58901	Circlip .....	2
4	131716	Shim (0,020 in.) .....	4	*		☐ Table Above	
5	215211	Bearing Strip .....	2				

## INNER MAST TWO-STAGE LFL (Figure 121)



**INNER MAST  
TWO-STAGE LFL**

**H45-55XM**

REF.	NAME OF PART 1 2 3 4	LIFT HEIGHT TO BOTTOM OF FORKS	
		2492 mm	2592 mm
	<b>Mast Group No.</b>	<b>B507 2492</b>	<b>B507 2592</b>
1	Inner Mast	1341205	1341206

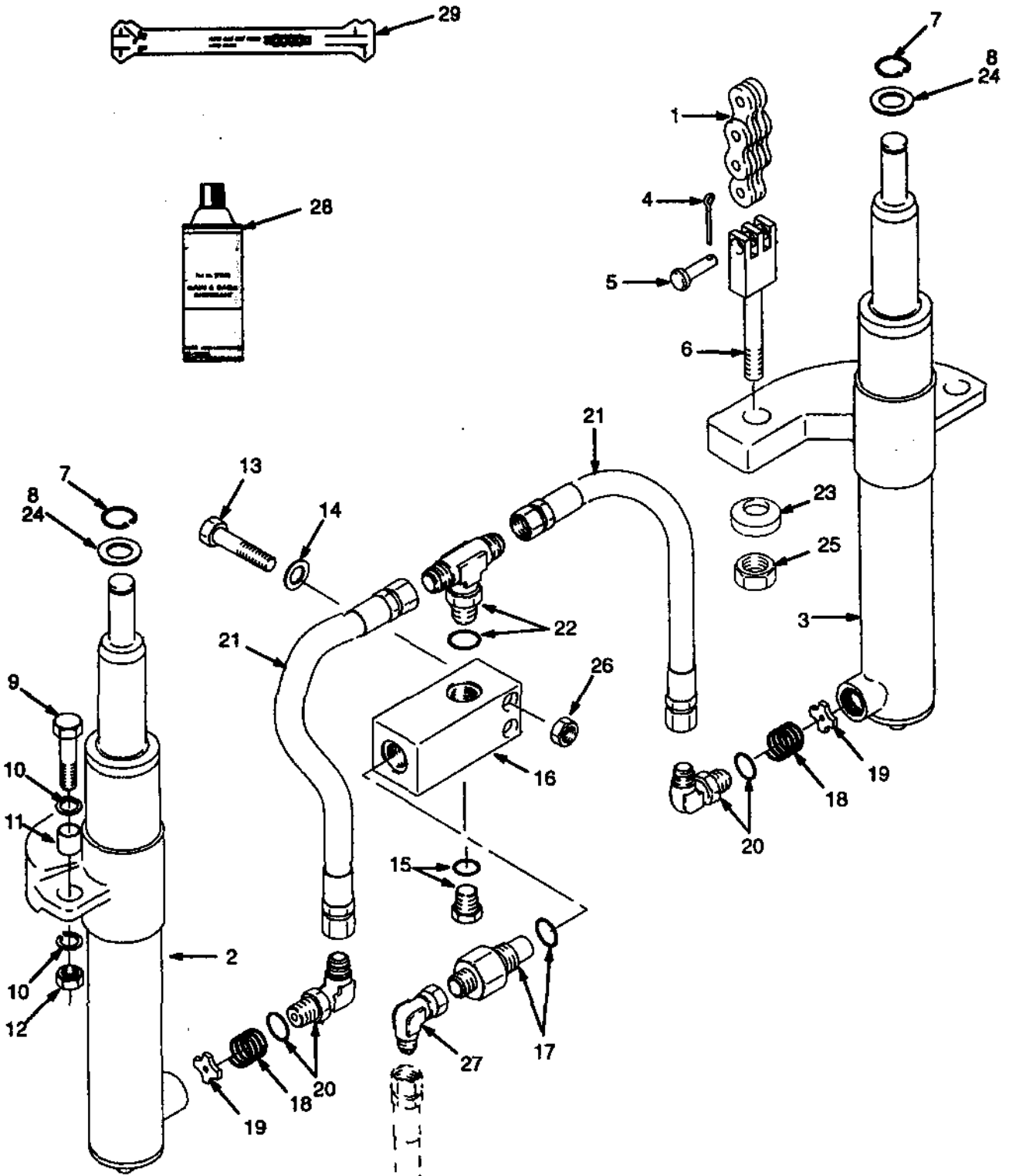
**H60-65XM**

REF.	NAME OF PART 1 2 3 4	LIFT HEIGHT TO BOTTOM OF FORKS	
		2559 mm	2459 mm
	<b>Mast Group No.</b>	<b>B562 2359</b>	<b>B562 2459</b>
1	Inner Mast	1341205	1341206

REF.	PART NO.	NAME OF PART	QTY	REF.	PART NO.	NAME OF PART	QTY
*	....	Mast .....	1	8	1378698	Sheave .....	1
1 <sup>a</sup>	....	Inner Mast .....	1	8	37752	Circlip .....	2
2	1345216	Stubshaft .....	2	8	1378699	Bearing .....	1
3	58901	Circlip .....	2	9	1379685	Chain Sheave (H60-65XM) .....	2
4	129387	Shim (0,020 in.) .....	AR	9	1378698	Sheave .....	1
5	1333396	Load Roller (Standard) .....	2	9	37752	Circlip .....	1
5	1333397	Load Roller (1,52 mm) .....	2	9	1378699	Bearing .....	1
6	1368656	Pin .....	2	10	302462	Pin .....	2
7	1378691	Spacer .....	4			↙ Table Above	
8	1345183	Chain Sheave (H45-55XM) .....	2				

## LIFT TWO-STAGE LFL

(Figure 122)



**LIFT  
TWO-STAGE LFL**

**H45-55XM**

REF.	NAME OF PART 1 2 3 4	LIFT HEIGHT TO BOTTOM OF FORKS	
		2492 mm	2592 mm
	Mast Group No.	B507 2492	B507 2592
1	Lift Chain	182332	135619

**H60-65XM**

REF.	NAME OF PART 1 2 3 4	LIFT HEIGHT TO BOTTOM OF FORKS	
		2359 mm	2459 mm
	Mast Group No.	B507 2392	B507 2492
1	Lift Chain	1342116	1342379

REF.	PART NO.	NAME OF PART	QTY	REF.	PART NO.	NAME OF PART	QTY
		Mast	1	18	337179	Spring	2
1 <sup>a</sup>		Lift Chain	2	19	357749	Special Washer	2
2		Cylinder (RH) ☛ Figure 122, Figure 123	1	20	189595	Fitting	2
3		Cylinder (LH) ☛ Figure 122, Figure 123	1	20	16485	O-Ring	1
4	15200	Split Pin	2	21	1345403	Hose	2
5	323161	Pin	2	22	16578	Fitting	1
6 <sup>b</sup>	1369357	Chain Anchor	2	22	16485	O-Ring	1
6 <sup>c</sup>	1369356	Chain Anchor	2	23	297649	Base Ring	2
7	131358	Circlip	2	24 <sup>d</sup>	1354915	Washer (0,25 mm)	AR
8	1333382	Washer	AR	24 <sup>d</sup>	1354916	Washer (0,75 mm)	AR
9	292532	Hex Head Bolt	2	24 <sup>d</sup>	1354917	Washer (1,50 mm)	AR
10	296422	Lockwasher	4	25	161003	Nut	2
11	323090	Spacer	2	26	313828	Nut	2
12	300937	Nut	2	27	16882	Fitting	1
13	136704	Hex Head Bolt	2	28	171350	Chain Lubricant	AR
14	320157	Washer	2	29	599737	Chain Wear Scale	AR
15 <sup>a</sup>	14603	Fitting	1				
15	16486	O-Ring	1				
16	1379687	Valve Housing	1				
16 <sup>a</sup>	1333392	Valve Housing	1				
17 <sup>f</sup>	2309766	Lowering Control Valve	1				
17 <sup>g</sup>	316306	Lowering Control Valve	1				
17	16982	O-Ring	1				

<sup>a</sup> ☛ Table Above  
<sup>b</sup> Mast S/N B507  
<sup>c</sup> Mast S/N B562  
<sup>d</sup> Use With Part No. 8  
<sup>e</sup> Optional  
<sup>f</sup> H45-55XM  
<sup>g</sup> H60-65XM



**CYLINDER  
TWO-STAGE LFL  
H45-55XM**

**H45-55XM**

REF N.O.	NAME OF PART 1 2 3 4	LIFT HEIGHT TO BOTTOM OF FORKS	
		2492 mm	2592 mm
	Mast Group No.	B507 2492	B507 2592
	Group No. Lift Cylinder (RH)	8600051 1341390	8600052 1341391
1	Shell	1355128	1355132
2	Rod	1355130	1355134
	Group No. Lift Cylinder (RH)	8600001 1341427	8600002 1341428
1	Shell	13551245	1355133
2	Rod	1355130	1355158

REF	PART NO.	NAME OF PART	QTY
a	....	Cylinder .....	1
1 <sup>a</sup>	....	Shell .....	1
2 <sup>a</sup>	....	Rod .....	1
3	1355127	Retainer .....	1
4	1355221	Spacer .....	1
5	257913	Check Valve .....	1
6	297531	Washer .....	1
7 <sup>bc</sup>	39348	O-Ring .....	1
8	187388	Circlip .....	1
9 <sup>b</sup>	1319668	Wiper .....	1
10 <sup>bc</sup>	2013075	Seal .....	1

REF	PART NO.	NAME OF PART	QTY
11 <sup>bc</sup>	92861	O-Ring .....	1
12 <sup>bc</sup>	638246	Back-Up Ring .....	1
13 <sup>bc</sup>	1356750	Wear Ring .....	1
14 <sup>bc</sup>	1356749	Rod Wiper .....	1
14 <sup>bc</sup>	1356752	Rod Wiper .....	1
15	186061	Packing Lube .....	AR

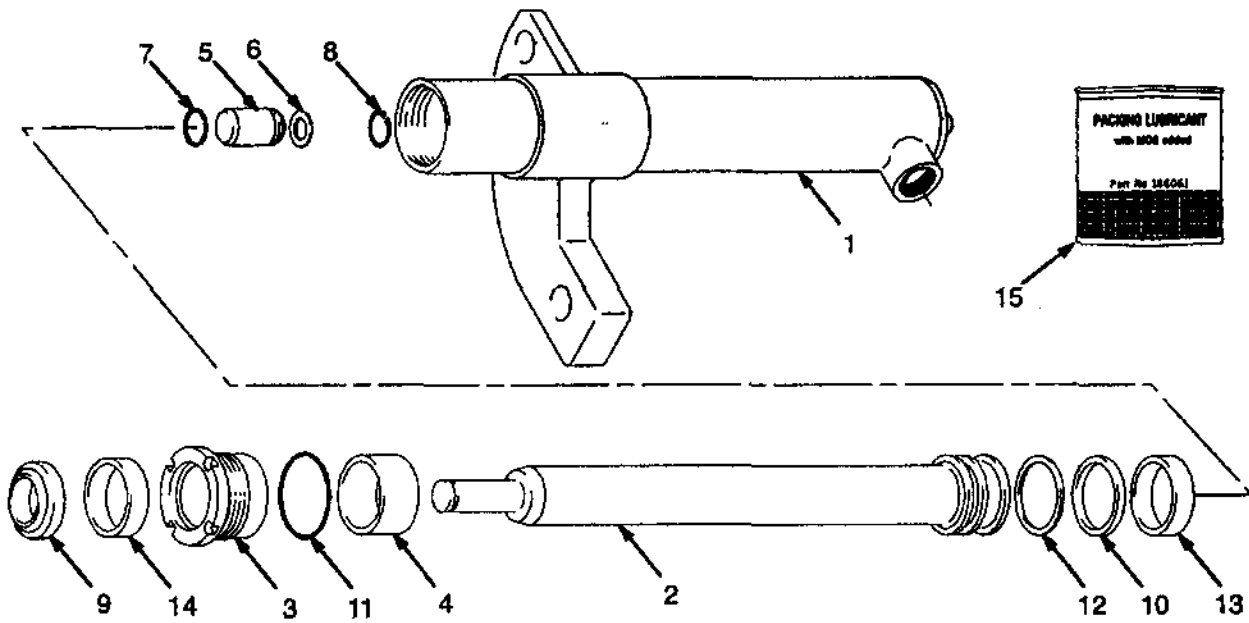
<sup>a</sup> Table Above

<sup>b</sup> Included In Seal Kit 1355276

<sup>c</sup> Included In Seal Kit 1355277

## CYLINDER TWO-STAGE LFL H60-65XM

(Figure 124)



**CYLINDER  
TWO-STAGE LFL  
H60-65XM**

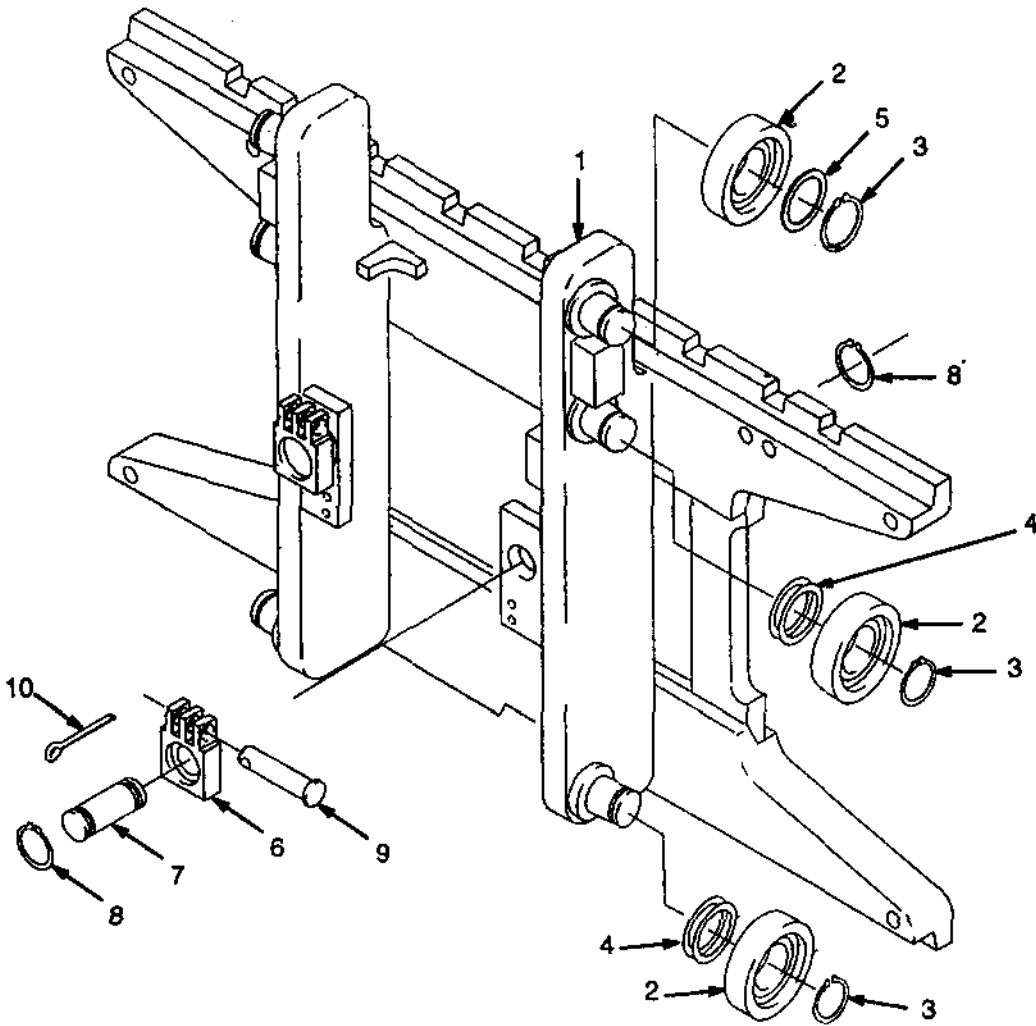
**H60-65XM**

REF N.O.	NAME OF PART 1 2 3	LIFT HEIGHT TO BOTTOM OF FORKS	
		2359 mm	2459 mm
	<b>Mast Group No.</b>	<b>B562 2359</b>	<b>B562 2459</b>
	Group No. Lift Cylinder (RH)	8600051 1341464	8600052 1341465
1	Shell	1355287	1355291
2	Rod	1355281	1355289
	Group No. Lift Cylinder (RH)	8600001 1341501	8600002 1341502
1	Shell	1355278	1355288
2	Rod	1355281	1355287

REF	PART NO.	NAME OF PART	QTY	REF	PART NO.	NAME OF PART	QTY
a	....	Cylinder .....	1	11 <sup>bc</sup>	59229	O-Ring .....	1
1 <sup>a</sup>	....	Shell .....	1	12 <sup>bc</sup>	335012	Back-UpRing .....	1
2 <sup>a</sup>	....	Rod .....	1	13 <sup>bc</sup>	1356751	Wear Ring .....	1
3	1355284	Retainer .....	1	14 <sup>bc</sup>	1356749	Rod Wiper .....	1
4	1355285	Spacer .....	1	14 <sup>bc</sup>	1356752	Rod Wiper .....	1
5	257913	Check Valve .....	1	15	186061	Packing Lubricant .....	AR
6	297531	Washer .....	1	<sup>a</sup> Table Above			
7 <sup>bc</sup>	39348	O-Ring .....	1	<sup>b</sup> Included In Seal Kit 1355286			
8	187388	Circlip .....	1	<sup>c</sup> Included In Seal Kit 1355411			
9 <sup>c</sup>	1310370	Wiper .....	1				
10 <sup>bc</sup>	334156	Seal .....	1				

## CARRIAGE TWO-STAGE LFL SIX ROLLER

(Figure 125)

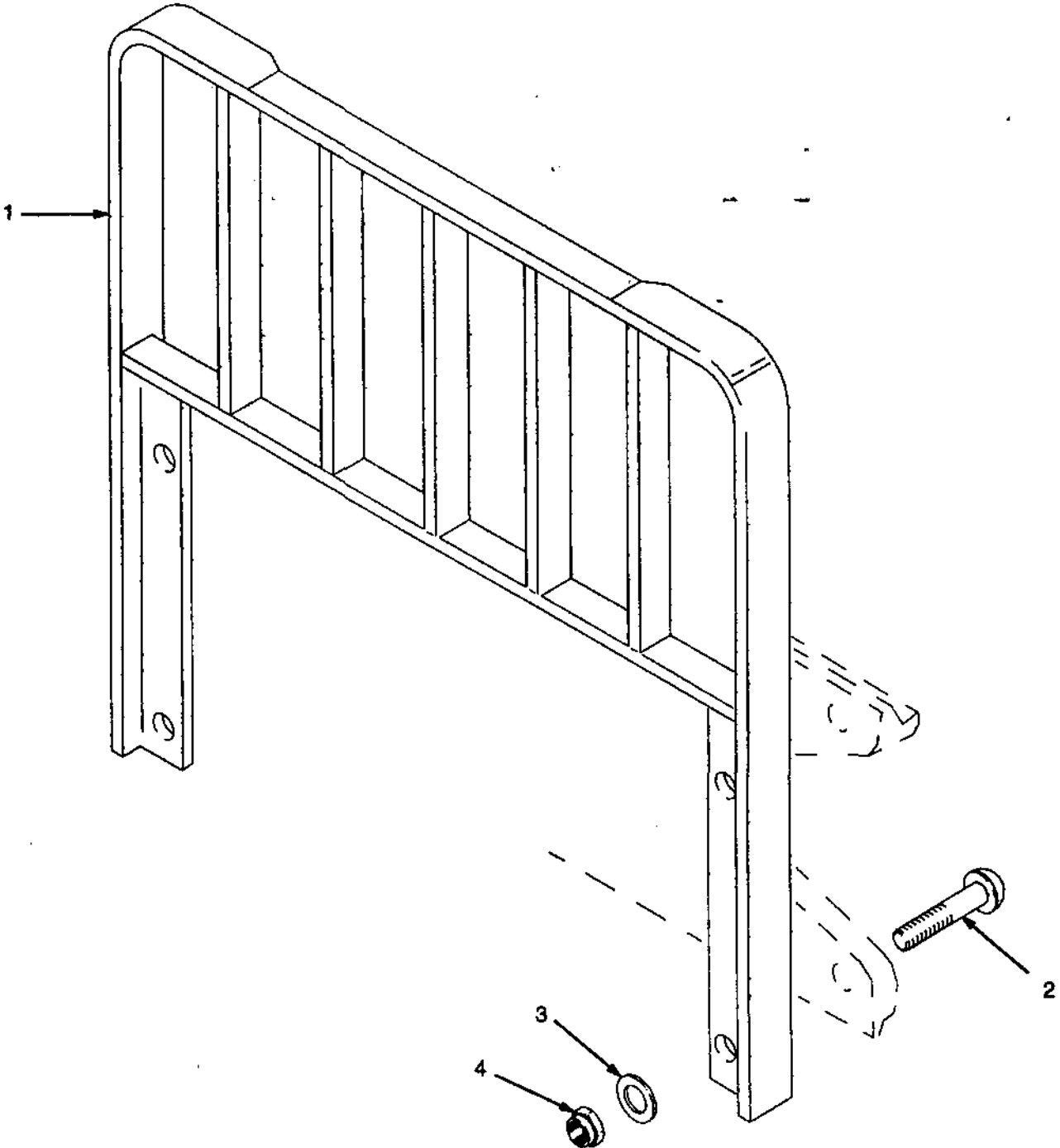


**CARRIAGE  
 TWO-STAGE LFL  
 SIX ROLLER**

	H45-55XM	H60-65XM
Group No.	8500013	8500014
Carriade	1343846	1343847

REF	PART NO.	NAME OF PART	QTY		REF	PART NO.	NAME OF PART	QTY	
			A	B				A	B
*	....	Carriage Assy .....	1	..	5	366116	Spacer .....	2	2
*	....	Carriage Assy .....	1	..	6	1369345	Chain Anchor .....	2	..
1	1338616	Carriage .....	1	..	6	1369344	Chain Anchor .....	2	..
1	1338618	Carriage .....	1	..	7	1345352	Pin .....	2	2
1	1345216	Stubshaft .....	6	6	8	131358	Circlip .....	4	4
2	1345219	Load Roller (Standard) .....	6	6	9	323161	Pin .....	2	2
2	1345220	Load Roller (1,52 mm) .....	6	6	10	15200	Split Pin .....	2	2
3	12891	Circlip .....	6	6	* Table				
4	1345263	Shim .....	AR	AR					

## LOAD BACKREST EXTENSION TWO-STAGE LFL (Figure 126)



## LOAD BACKREST EXTENSION TWO-STAGE LFL

## KEY:

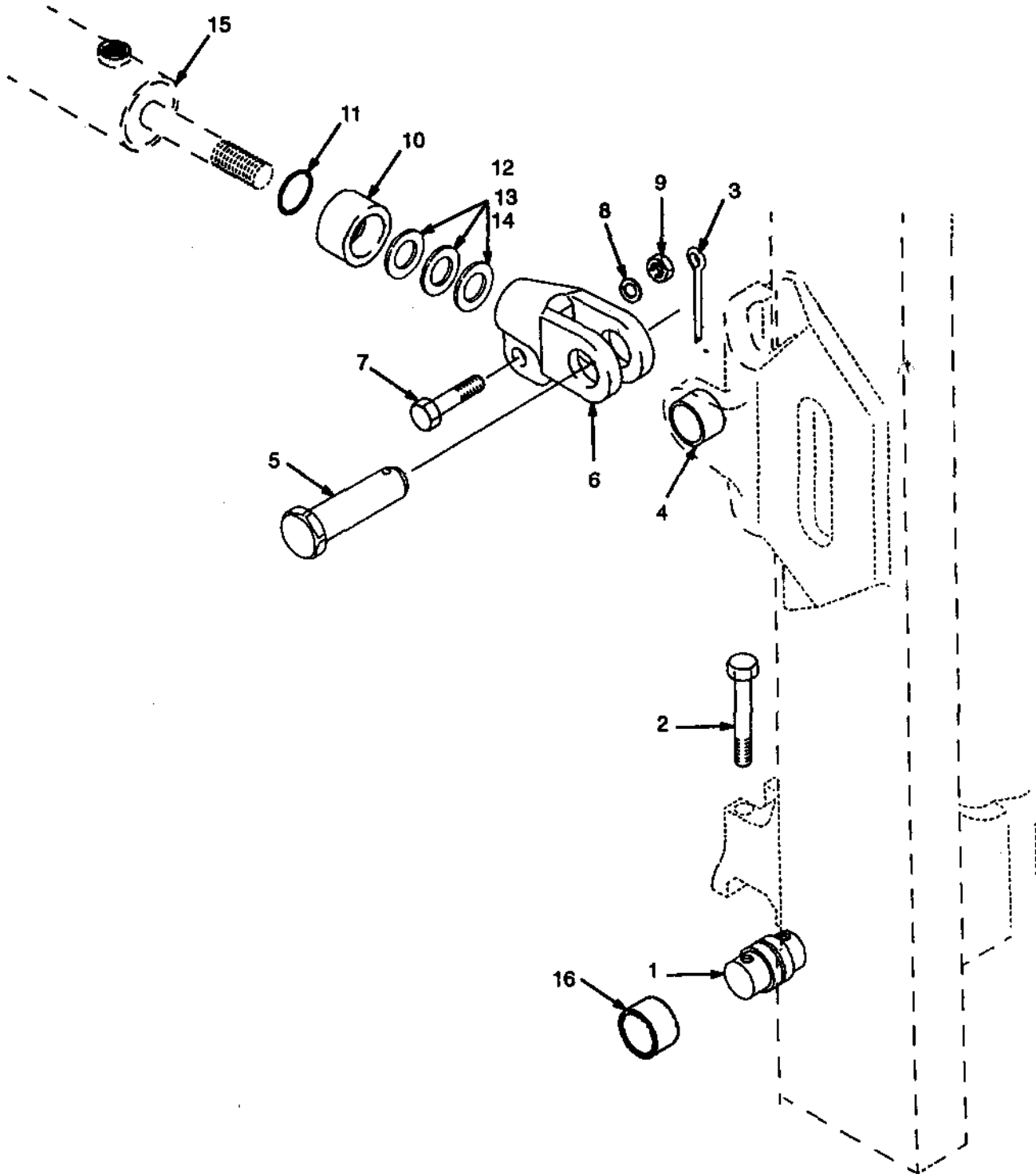
A: H45-55XM

B: H60-65XM

REF	PART NO.	NAME OF PART	QTY		REF	PART NO.	NAME OF PART	QTY	
			A	B				A	B
1	1338642	Load Backrest Extension .....	1	..	3 <sup>b</sup>	296423	Washer .....	4	4
1	1338645	Load Backrest Extension .....	1		4	300937	Nut .....	4	4
1 <sup>a</sup>	1345267	Load Backrest Extension .....	1		<sup>a</sup> Polished Fork With Full Bottom Taper				
2	1343990	Hex Head Bolt .....	4	..	<sup>b</sup> Optional				
2	1354923	Hex Head Bolt .....	4						
3	221771	Washer .....	4	4					

## MAST INSTALLATION TWO-STAGE LFL

(Figure 127)



**MAST INSTALLATION  
 TWO-STAGE LFL**

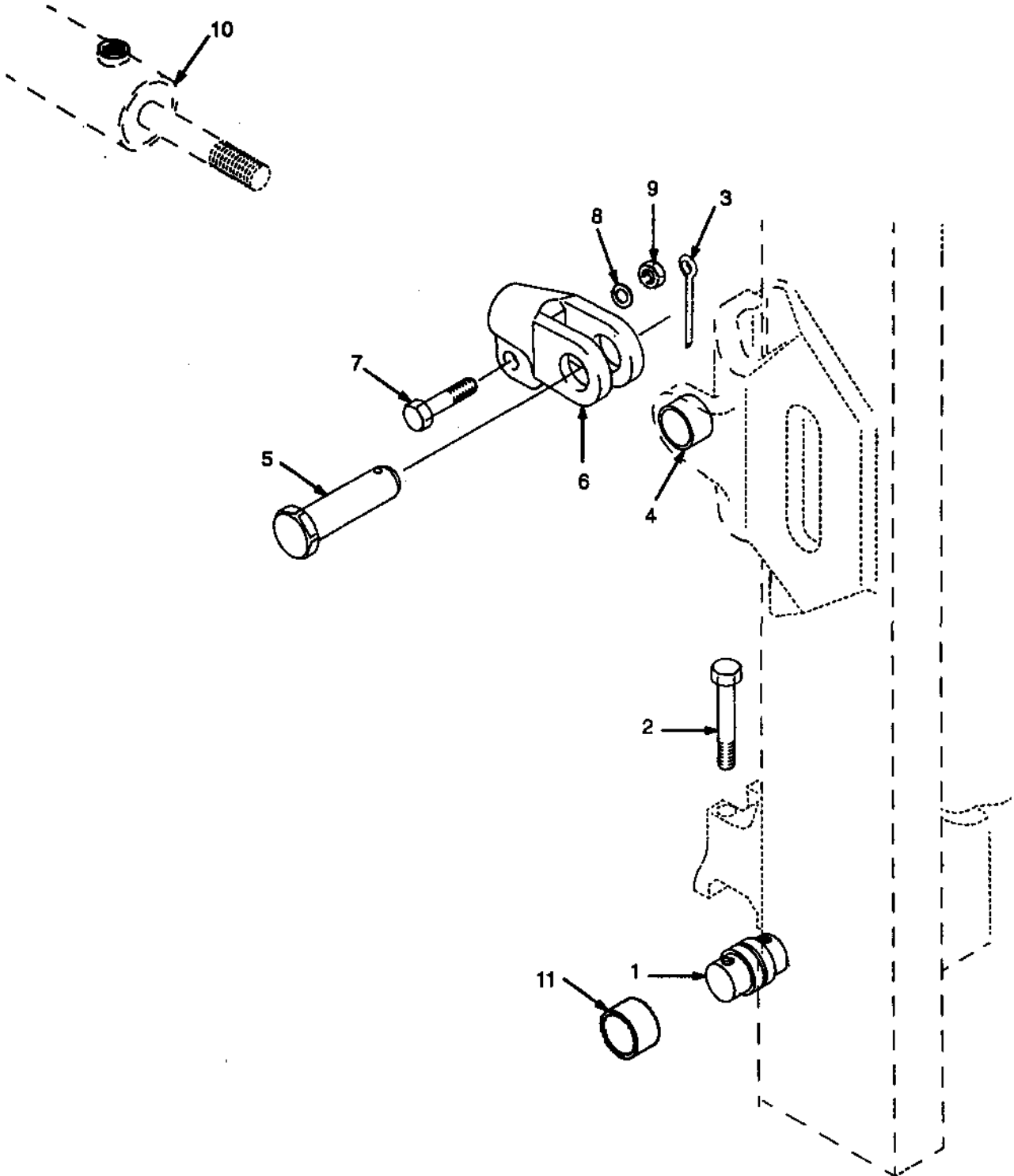
**KEY:**

- A: 6° Forward Tilt/10° Back Tilt
- B: 6° Forward Tilt/6° Back Tilt
- C: 6° Forward Tilt/5° Back Tilt

REF	PART NO.	NAME OF PART	QTY			REF	PART NO.	NAME OF PART	QTY		
			A	B	C				A	B	C
1	1376424	Pin .....	2	2	2	10	384101	Spacer .....	..	..	2
2	1376423	Hex Head Bolt .....	4	4	4	11	55434	O-Ring .....	..	2	2
3	15236	Split Pin .....	2	2	2	12	134675	Shim .....	..	AR	AR
4	300982	Bush .....	2	2	2	13	1325119	Shim .....	..	AR	AR
5	1345354	Pin .....	2	2	2	14	1361948	Shim .....	..	AR	AR
6	1307641	Rod End .....	2	2	2	15	....	Tilt Cylinder .....	2	2	2
7	293650	Hex Head Bolt .....	2	2	2			☛ Figure 114			
8	292683	Lockwasher .....	2	2	2	16	1333385	Bush .....	2	2	2
9	216877	Nut .....	2	2	2	16	1380115	Bush (Optional) .....	2	2	2
10	1451788	Spacer .....	..	2	..						

## MAST INSTALLATION TWO-STAGE LFL

(Figure 128)

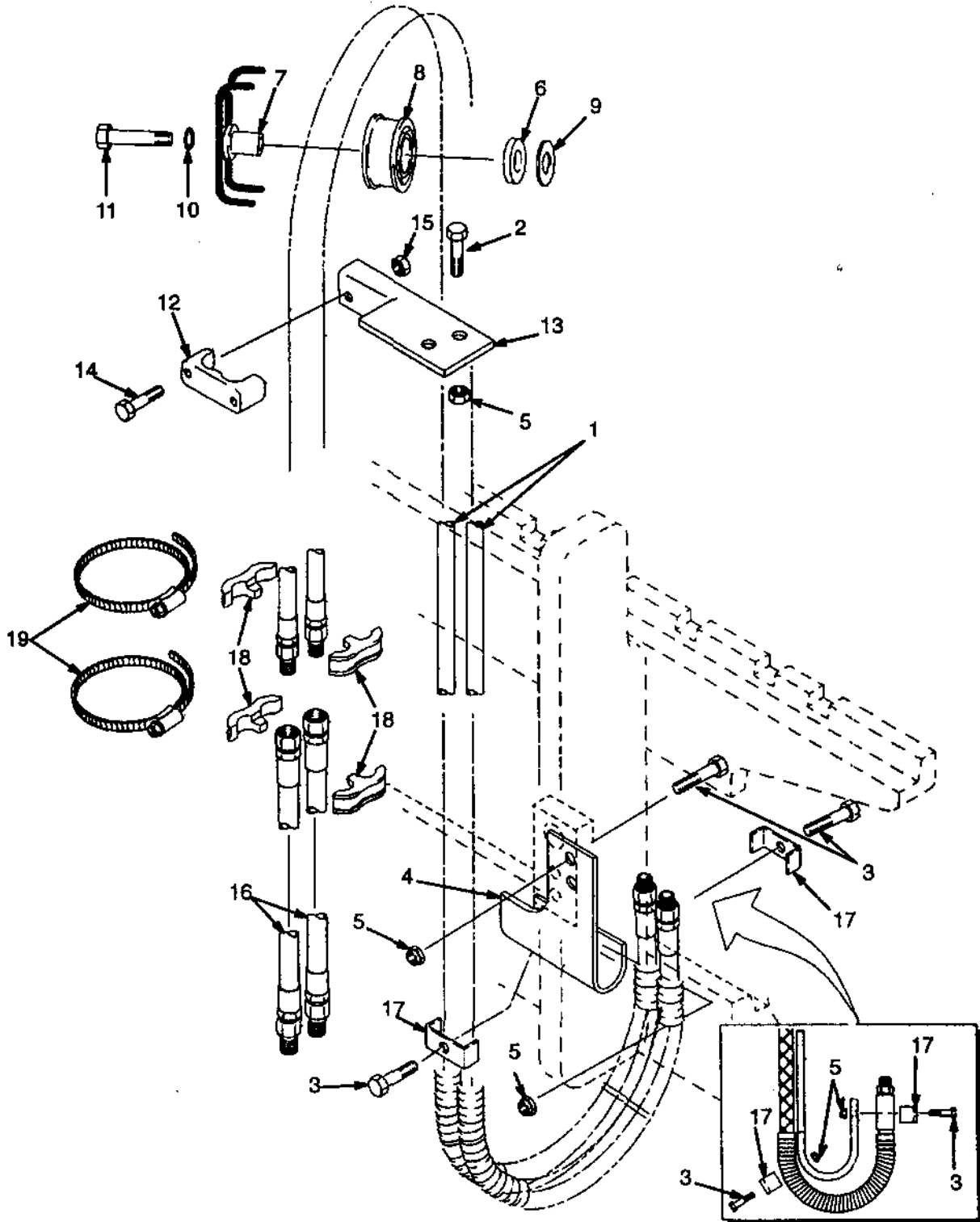


**MAST INSTALLATION  
TWO-STAGE LFL**

<u>REF</u>	<u>PART NO.</u>	<u>NAME OF PART</u>	<u>QTY</u>	<u>REF</u>	<u>PART NO.</u>	<u>NAME OF PART</u>	<u>QTY</u>
1	1376424	Pin .....	2	8	292683	Lockwasher .....	2
2	1376423	Hex Head Bolt .....	4	9	216877	Nut .....	2
3	15236	Split Pin .....	2	10	....	Tilt Cylinder .....	2
4	300982	Bush .....	2			☛ Figure 114	
5	1345354	Pin .....	2	11	1333385	Bush .....	2
6	1356318	Rod End .....	2	11	1380115	Bush (Optional) .....	2
7	293650	Hex Head Bolt .....	2				

## HEADER HOSE TWO-STAGE LFL

(Figure 129)



**HEADER HOSE  
TWO-STAGE LFL**

**H45-55XM**

REF.	NAME OF PART 1 2 3 4	LIFT HEIGHT TO BOTTOM OF FORKS	
		2492 mm	2592 mm
	Mast Group No.	B507 2492	B507 2592
1	Hose	1345492	1345493

**H60-65XM**

REF.	NAME OF PART 1 2 3 4	LIFT HEIGHT TO BOTTOM OF FORKS	
		2359mm	2459 mm
	Mast Group No.	B582 2359	B582 2459
1	Hose	1345492	1345493

**KEY:**

**A: Three Function**

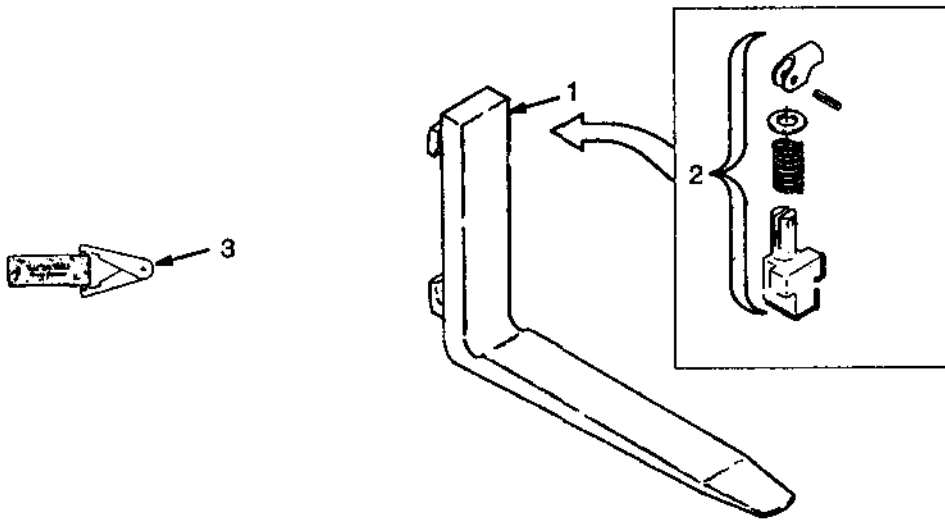
**B: Four Function**

REF	PART NO.	NAME OF PART	QTY		REF	PART NO.	NAME OF PART	QTY	
			A	B				A	B
1 <sup>a</sup>	....	Hose .....	2	4	12	1360386	Clamp .....	1	2
2	136704	Hex Head Bolt .....	2	4	13	1354919	Bracket (RH) .....	1	1
3	292508	Hex Head Bolt .....	4	8	13	1354921	Bracket(LH) .....	1	1
4	1345412	Bracket (RH) .....	1	1	14	292502	Hex Head Bolt .....	2	4
4	1345413	Bracket(LH) .....	1	1	15	313805	Nut .....	2	4
5	313828	Nut .....	6	12	16	1354922	Hose (RH) .....	2	2
6	1360549	Spacer .....	1	2	16	1354904	Hose (LH) .....	2	2
7	1360548	Stubshaft .....	1	2	17	1345348	Clamp .....	2	4
8	1381595	Sheave .....	1	2	18	1353530	Clamp .....	4	8
9	1345190	Special Washer .....	1	2	19	1360507	Clamp .....	2	4
10	292683	Washer .....	1	2					
11	292533	Hex Head Bolt .....	1	2					

\* Table

## FORKS TWO-STAGE LFL

(Figure 130)



**FORKS  
TWO-STAGE LFL**

**H45-55XM**

REF	NAME OF PART 1 2 3 4	Standard Taper		Full Bottom Taper	Qty
1	Fork	125 mm x 40 mm	100 mm x 40 mm	125 mm x 40 mm	2
	762mm	1326660	384210	....	
	914mm	1326661	384211	1338087	
	1076mm	1326663	384213	1338088	
	1219mm	1326664	384214	1338089	
	1372mm	1326665	384215	....	
	1524mm	1326666	384216	....	
2	Latch	369795	369795	369795	1
3	Fork Tool	3020387	3020387	3020387	AR

**H60-65XM**

REF	NAME OF PART 1 2 3 4	Standard Taper		Full Bottom Taper	Qty
1	Fork	100 mm x 45 mm	125 mm x 45 mm	180 mm x 45 mm	2
	914mm	1333018	384210	....	
	1076 mm	1333020	367420	....	
	1207mm	....	....	1338098	
	1219mm	1333021	367421	....	
	1372mm	1333022	367422	1332745	
	1524mm	1333023	367423	....	
	1829mm	1333024	367424	....	
2	Latch	369796	369796	369796	1
3	Fork Tool	3020387	3020387	3020387	AR

Note: Other Fork Dimensions Available On Request, Contact Your Hyster Dealer