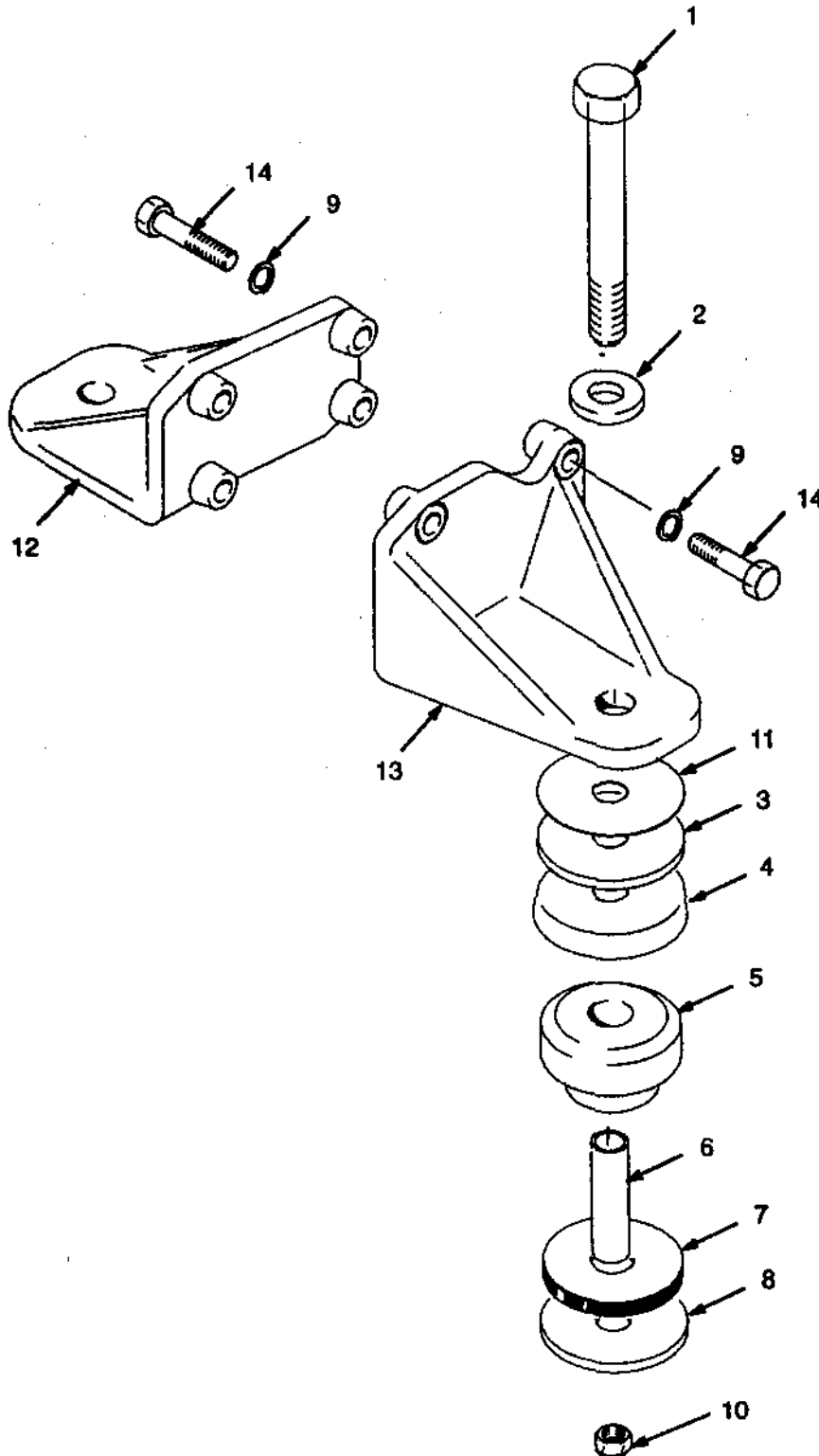


ENGINE MOUNT PETROL AND LPG 2.0L ENGINE (Figure 8)

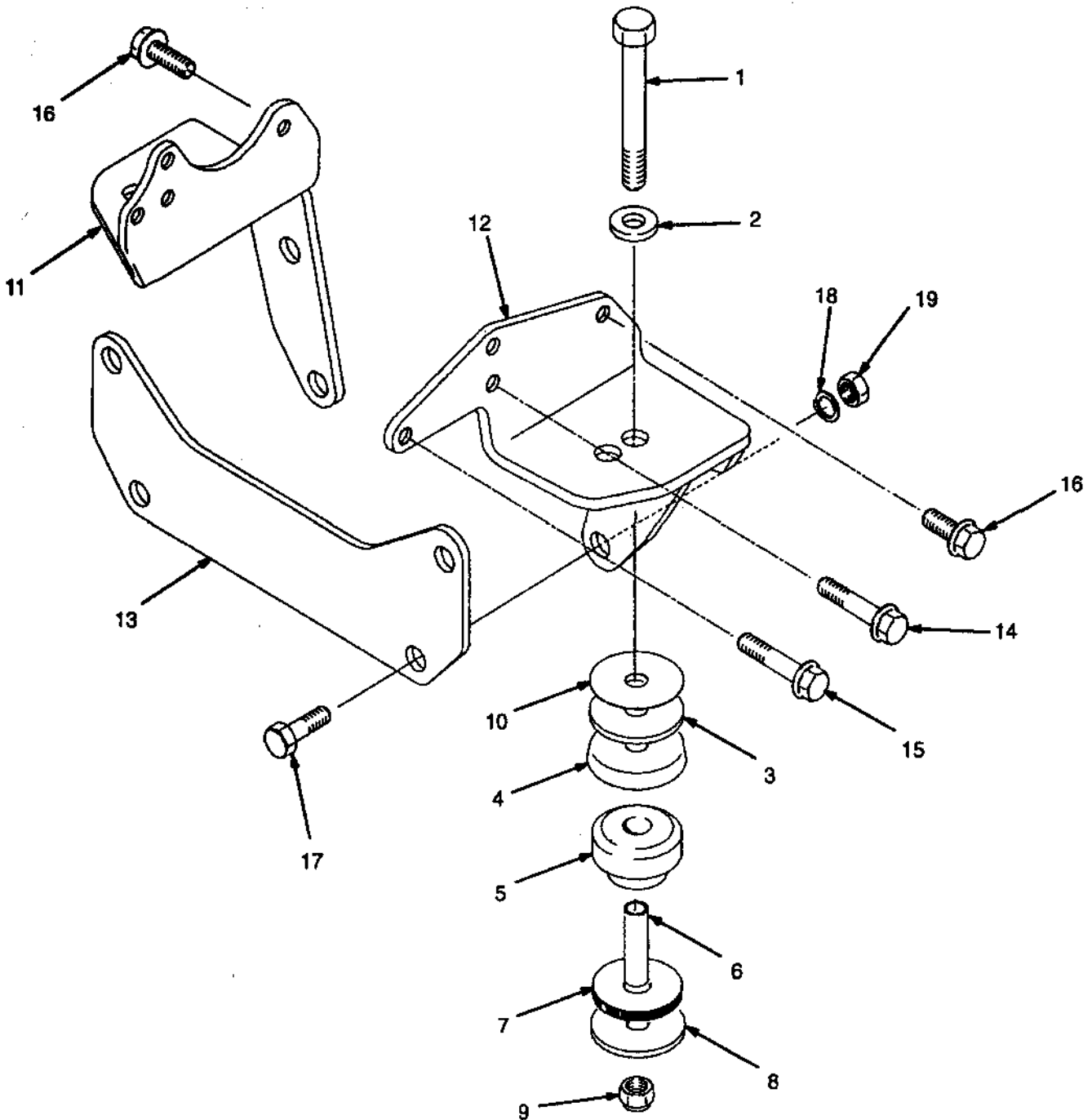


**ENGINE MOUNT
PETROL AND LPG
2.0L ENGINE**

<u>REF</u>	<u>PART NO.</u>	<u>NAME OF PART</u>	<u>QTY</u>	<u>REF</u>	<u>PART NO.</u>	<u>NAME OF PART</u>	<u>QTY</u>
1	293658	Hex Head Bolt	2	8	300939	Washer	2
2	300932	Washer	2	9	292682	Lockwasher	8
3	340796	Washer	2	10	300937	Nut	2
4	1351098	Cup	2	11	1351017	Spacer	AR
5	1351096	Isolator	2	12	1337014	Bracket(LH)	1
6	1351061	Spacer	2	13	1337012	Bracket(RH)	1
7	1351060	Bumper	2	14	1329286	Hex Head Bolt	8

ENGINE MOUNT PETROL AND LPG 3,0L ENGINE

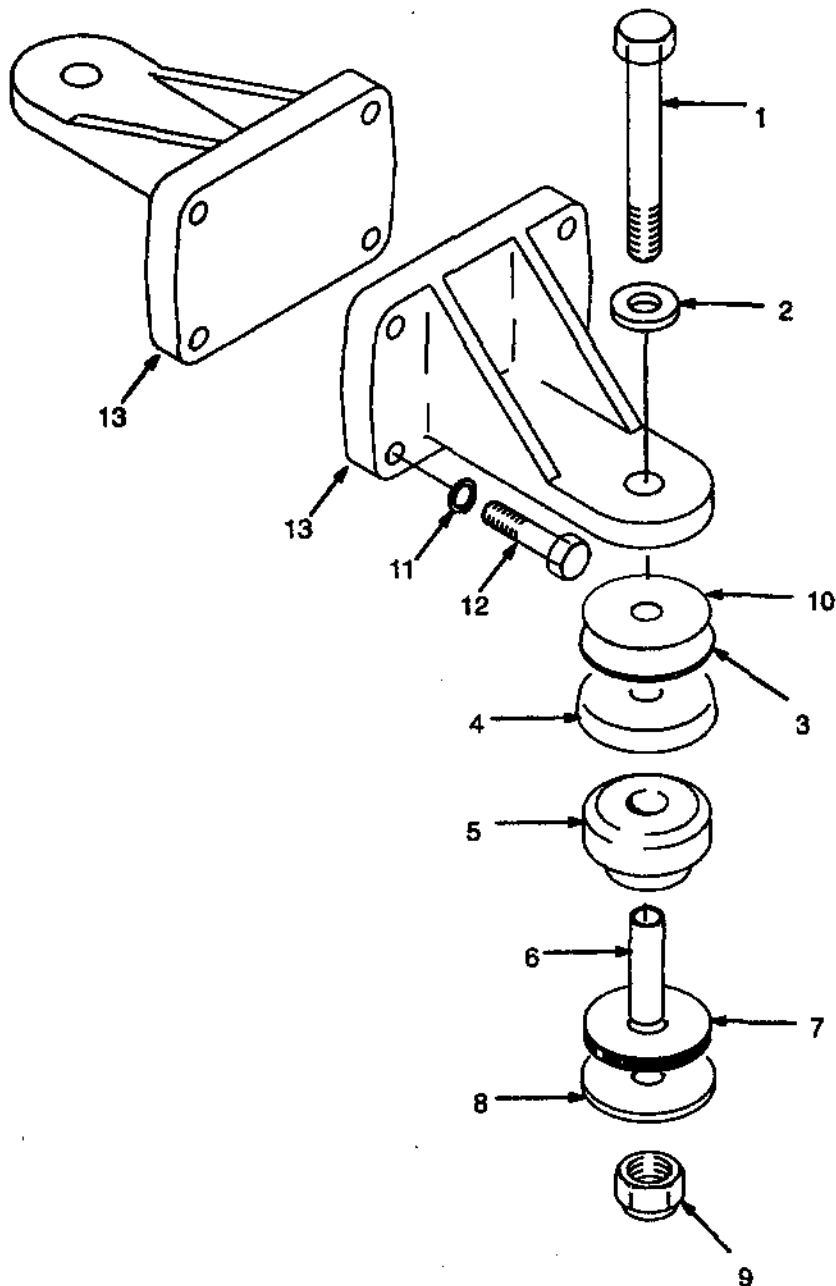
(Figure 9)



**ENGINE MOUNT
PETROL AND LPG
3,0L ENGINE**

REF	PART NO.	NAME OF PART	QTY	REF	PART NO.	NAME OF PART	QTY
1	293658	Hex Head Bolt	2	11	1375125	Bracket (LH)	1
2	300932	Washer	2	12	1375129	Bracket (RH)	1
3	340796	Washer	2	13	1375128	Plate	1
4	1351098	Cup	2	14	196898	Screw	1
5	1351096	Isolator	2	15	197853	Screw	1
6	1351061	Spacer	2	16	174413	Screw	6
7	1351060	Bumper	2	17	293686	Hex Head Bolt	4
8	300939	Washer	2	18	296426	Washer	4
9	300937	Locknut	2	19	316828	Locknut	4
10	1351017	Spacer	AR				

ENGINE MOUNT DIESEL (Figure 10)

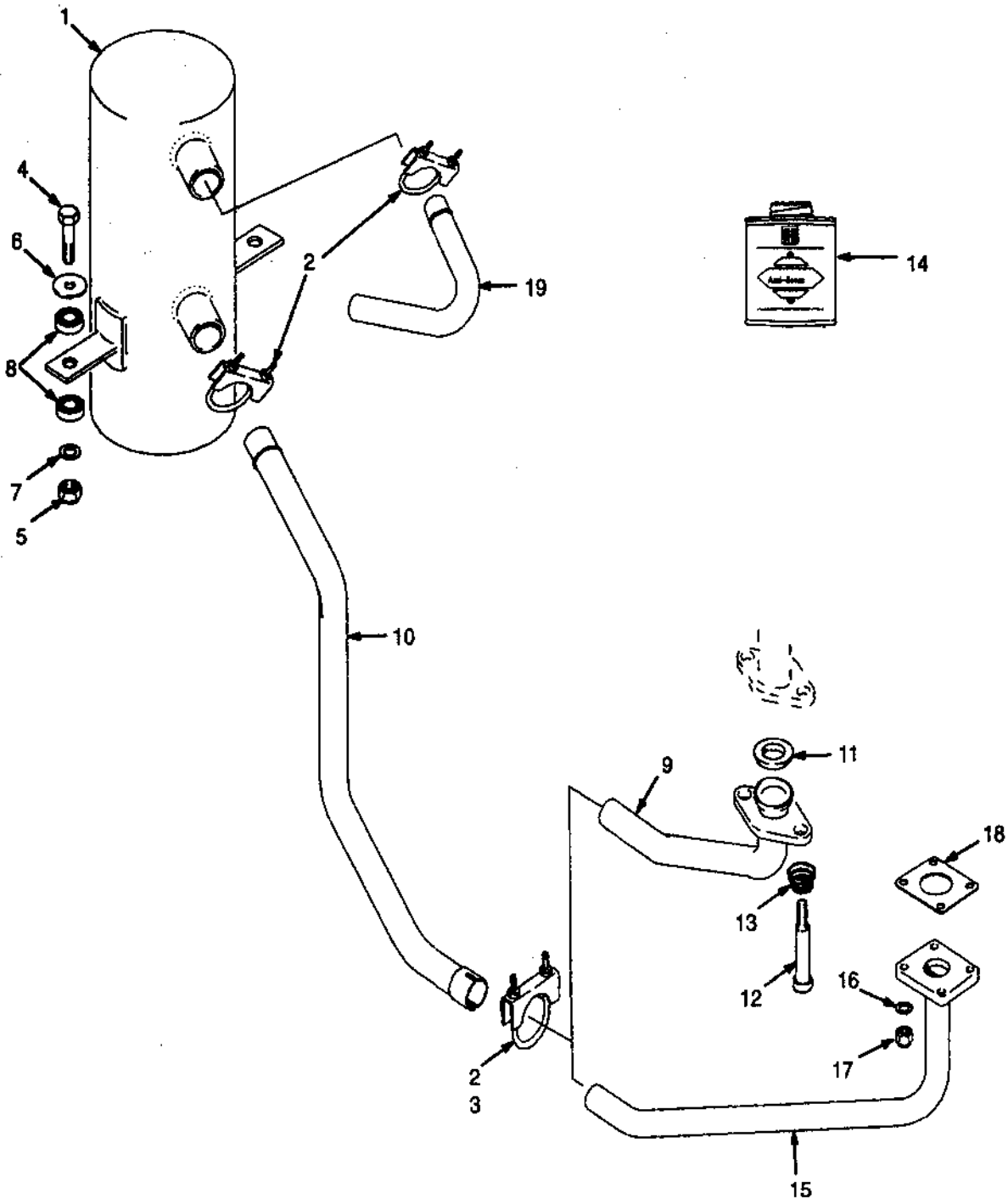


**ENGINE MOUNT
DIESEL**

<u>REF</u>	<u>PART NO.</u>	<u>NAME OF PART</u>	<u>QTY</u>	<u>REF</u>	<u>PART NO.</u>	<u>NAME OF PART</u>	<u>QTY</u>
1	293658	Hex Head Bolt	2	9	300937	Locknut	2
2	300932	Washer	2	10	1351017	Spacer	AR
3	340796	Washer	2	11	1458049	Washer	8
4	1351098	Cup	2	12	1457909	Screw	8
5	1351096	Isolator	2	13	1457908	Bracket	1
6	1351061	Spacer	2	13	1457910	Bracket	1
7	1351060	Bumper	2			Note: Engine Brackets Supplied With Engine	
8	300939	Washer	2				

EXHAUST

(Figure 11)



**EXHAUST
 PETROL AND LPG**

KEY:

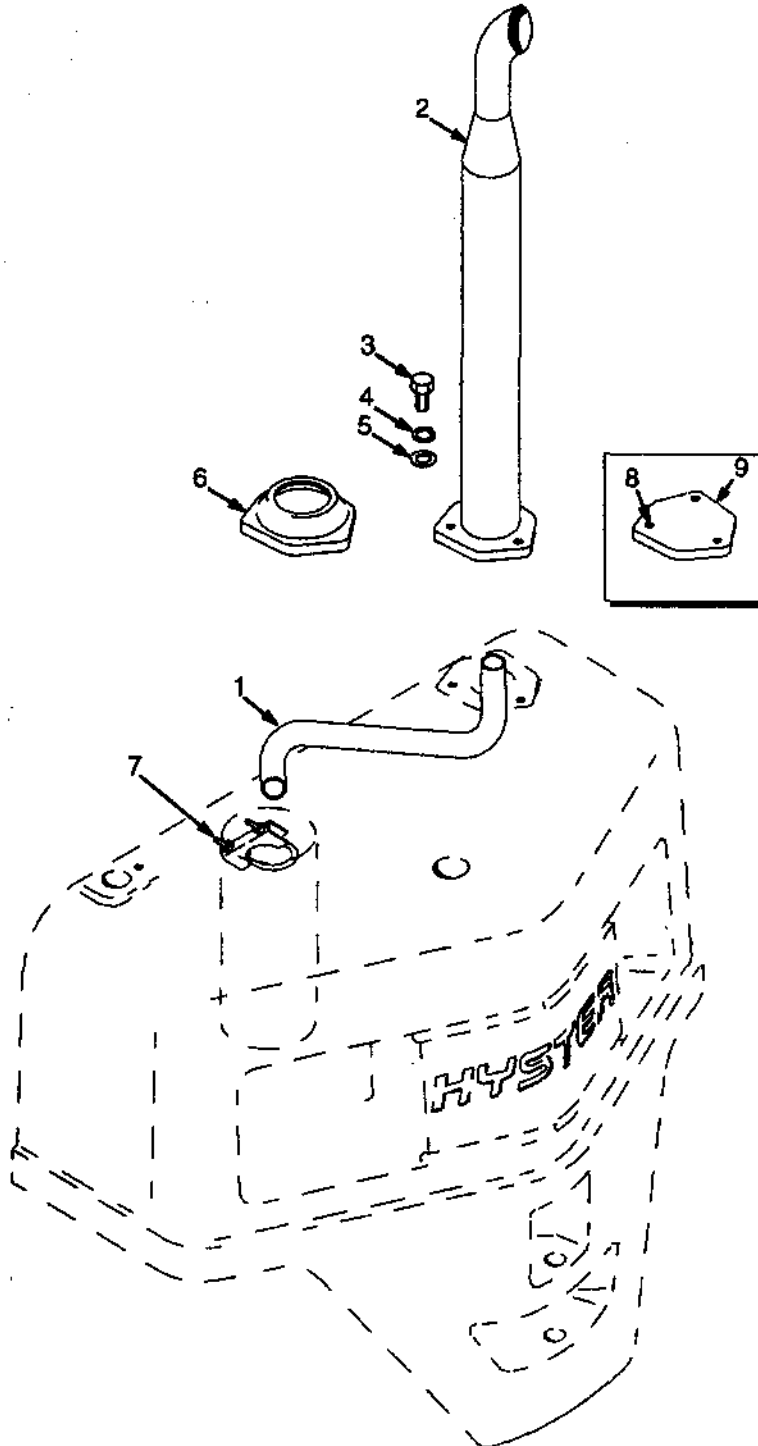
A: 2,OL Engine

B: 3,OL Engine

REF	PART NO.	NAME OF PART	QTY		REF	PART NO.	NAME OF PART	QTY	
			A	B				A	B
1	1338282	Muffler	1	1	11	1375189	Seal	1	
1 ^a	1350261	Muffler	1	1	12	1376766	Hex Head Bolt	2	
2	68968	Clamp	2	3	13	1335898	Spring	2	
3	195769	Clamp	1	..	14	251979	Lubricant	AR	AR
4	292517	Hex Head Bolt	2	2	15	1338300	Pipe	1	..
5	316826	Nut	2	2	16	292681	Lockwasher	4	..
6	1351176	Washer	2	2	17	239503	Nut	4	..
7	320159	Washer	2	2	18	1338308	Joint	1	..
8	1351177	Spacer	4	4	19	1338276	Pipe	1	1
9	1375155	Pipe		1	*Type GS And LPS				
10	1347126	Tube	1	..					
10	1383012	Tube		1					

EXHAUST OVERHEAD

(Figure 12)

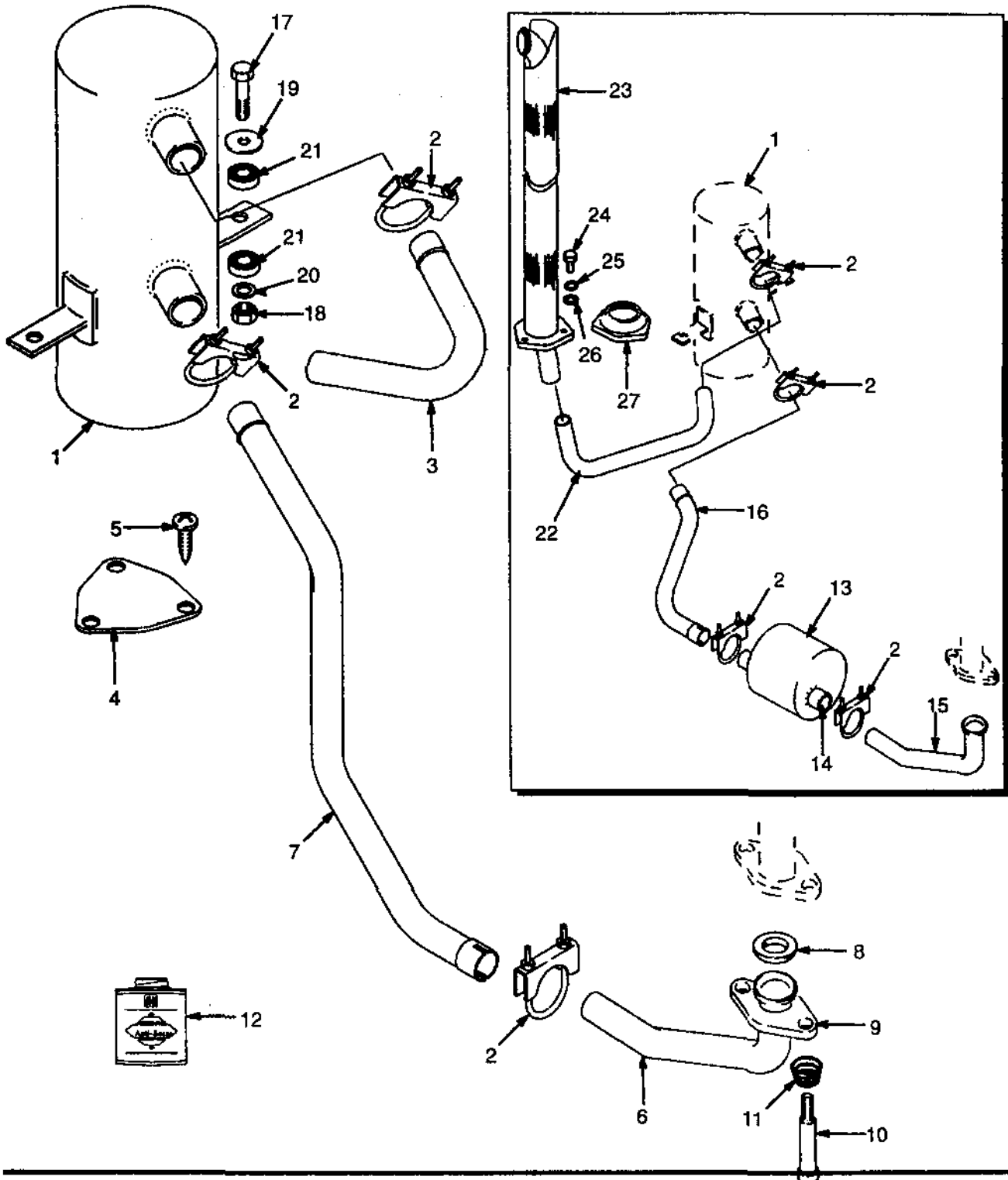


EXHAUST OVERHEAD

REF	PART NO.	NAME OF PART	QTY	REF	PART NO.	NAME OF PART	QTY
1	1335764	Tube	1	7	68968	Clamp	1
2	1335765	Tail Pipe	1	8 ^b	1347045	Fastener	3
3	287854	Hex Head Bolt	3	9 ^b	1347043	Cover	1
4	292682	Lockwasher	3	^a	2.0L LPG		
5	320159	Washer	3	^b	Use With Counterweight Exhaust		
6	1351178	Cover	1				
6 ^a	1365887	Cover	1				

EXHAUST DIESEL

(Figure 13)



**EXHAUST
 DIESEL**

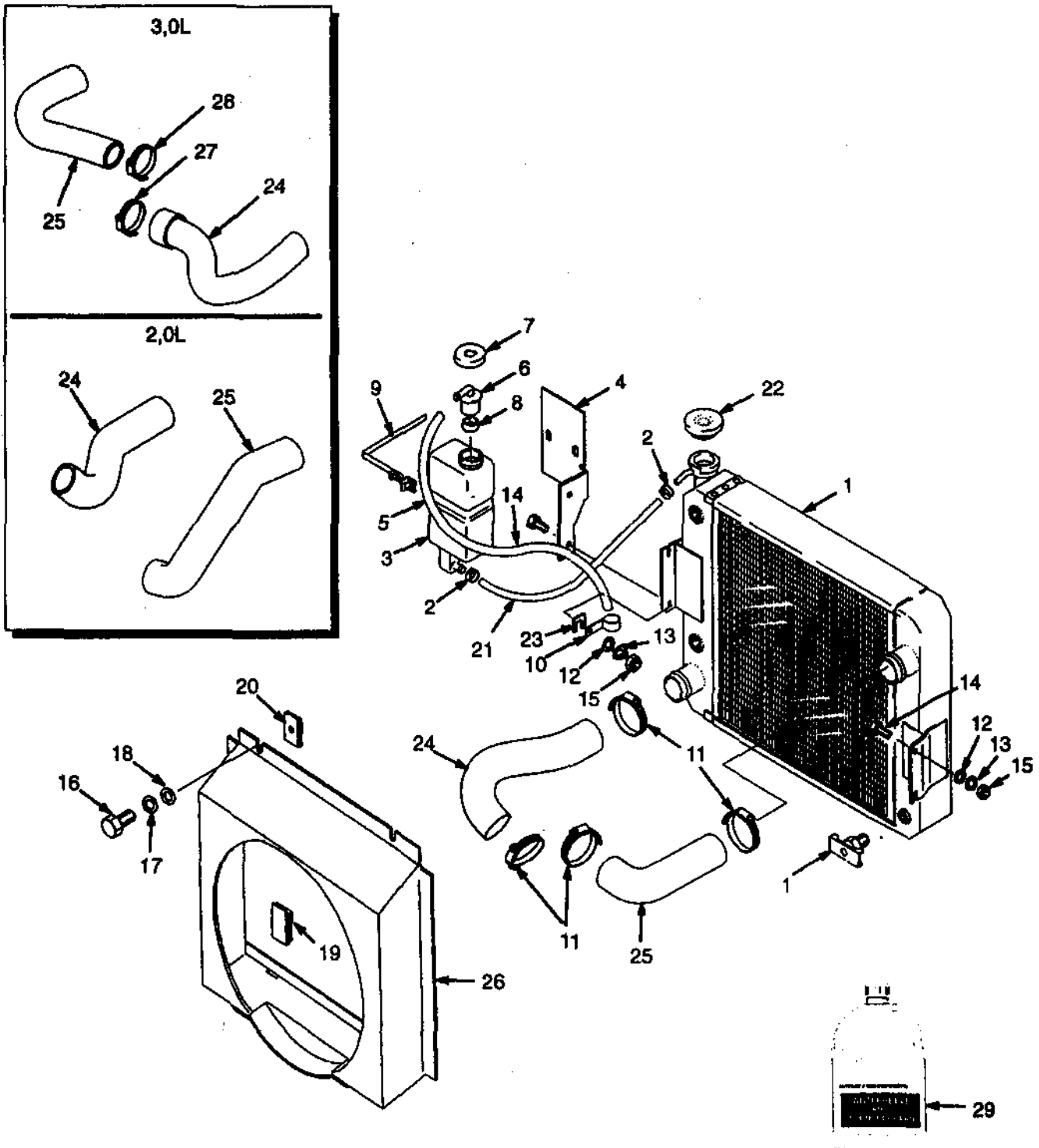
REF	PART NO.	NAME OF PART	QTY	REF	PART NO.	NAME OF PART	QTY
1	1338282	Muffler	1	15 ^b	1396274	Tube	1
1 ^a	1350261	Muffler	1	16 ^b	1396270	Tube	1
2	68968	Clamp	3	17	292517	Hex Head Bolt	2
3	1338276	Tube	1	18	316826	Nut	2
4	1347043	Cover	1	19	1351176	Washer	2
5	1347045	Fastener	3	20	320159	Washer	2
6	1396273	Tube	1	21	1351177	Spacer	4
7	1383012	Tube	1	22 ^b	1335764	Tube	1
8	1338258	Seal	1	23 ^b	1335765	Tail Pipe	1
9	1396272	Flange	1	24 ^b	287854	Hex Head Bolt	3
10	1337118	Hex Head Bolt	3	25 ^b	292682	Lockwasher	3
11	1335898	Spring	3	26 ^b	320159	Washer	3
12	251979	Lubricant	AR	27 ^b	1351178	Cover	1
13 ^b	878258	Purifier	1				
14 ^b	14386	Fitting	1				

^a Type DS

^b Upswept Exhaust

RADIATOR AND HOSES

(Figure 14)



RADIATOR AND HOSES

KEY:

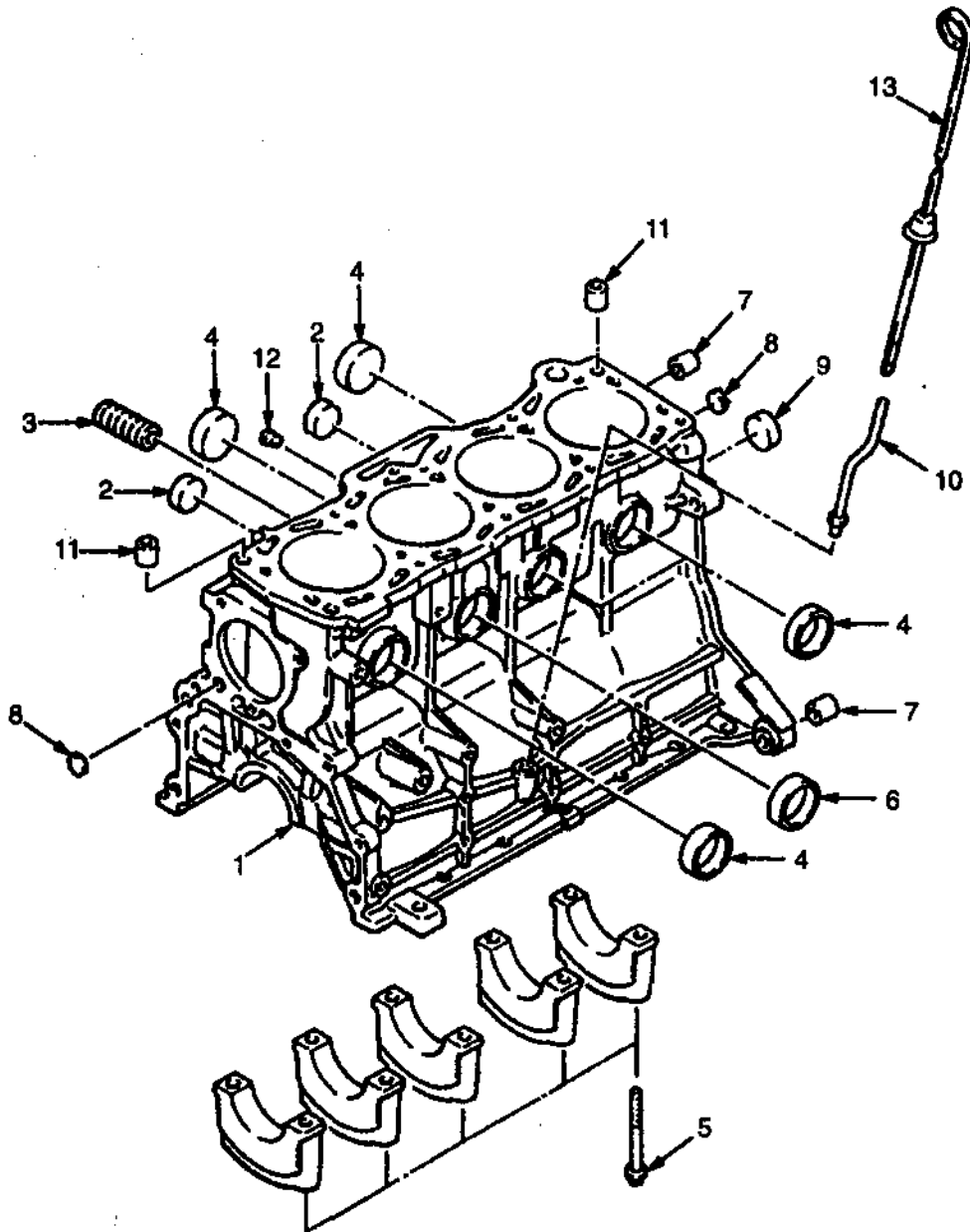
- A: 2,OL Engine (Petrol And LPG)
- B: 3,OL Engine (Petrol And LPG)
- C: 2,6L (Diesel)

REF	PART NO.	NAME OF PART	QTY			REF	PART NO.	NAME OF PART	QTY		
			A	B	C				A	B	C
1	1338328	Radiator (10 Fins/in.)	1	17	1347076	Washer	2	2	2
1	1337002	Radiator (10 Fins/in.)	..	1	1	18	292678	Lockwasher	2	2	2
1*	1343623	Radiator (6.5 Fins/in.)	1	19	1329271	Clip	2	2	2
1*	1343618	Radiator (6.5 Fins/in.)	..	1	1	20	1329272	Nut	2	2	2
1	1357716	Oil Cooler	1	..	1	21	1359580	Tube	1	1	1
1	1357717	Oil Cooler	..	1	1	22	1352140	RadiatorCap	1	1	1
1	1357721	Drain Cock	1	1	1	23	1331152	Shim	AR	AR	AR
2	168718	Clamp	2	2	2	24	1339651	Hose (Lower)	1
3	1347026	Reservoir	1	1	1	24	1376722	Hose (Lower)	..	1	..
4	1347072	Bracket	1	1	1	24	1396212	Hose (Lower)	1
5	1359581	Outlet (Assy)	1	1	1	25	1368949	Hose (Upper)	1
5	345453	Outlet	1	1	1	25	1375132	Hose (Upper)	..	1	..
6	1457312	Hose	1	1	1	25	1396211	Hose (Upper)	1
7	345454	Cap	1	1	1	26	1339635	Shroud	1
8	336550	Bush	1	1	1	26	1375134	Shroud	..	1	..
9	1345825	Strap	1	1	1	26	1396221	Shroud	1
10	173247	Clamp	1	1	1	27	119236	Clamp	..	1	1
11	127045	Clamp	4	2	2	28	369804	Clamp	..	1	1
12	292682	Lockwasher	3	3	3	29	3002338	Antifreeze (3,8 L)	AR	AR	AR
13	320159	Washer	3	3	3	29	3027456	Antifreeze (22,8 L)	AR	AR	AR
14	136985	Hex Head Bolt	3	3	3	29	3027457	Antifreeze (209 L)	AR	AR	AR
15	136692	Nut	3	3	3						
16	302235	Screw	2	2	2						

* Optional

CYLINDER BLOCK PETROL AND LPG 2,0L ENGINE

(Figure 15)

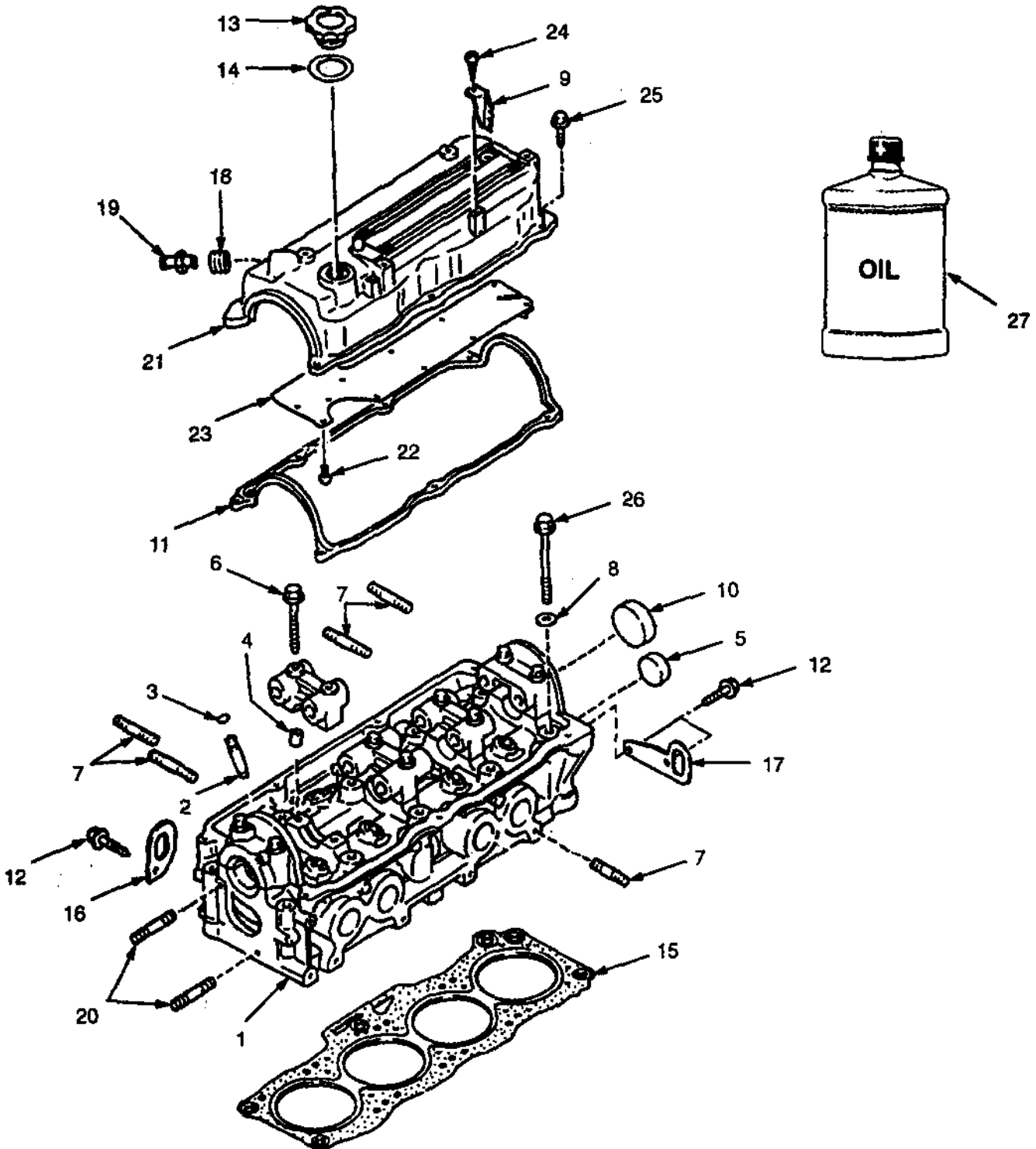


**CYLINDER BLOCK
PETROL AND LPG
2,0L ENGINE**

<u>REF</u>	<u>PART NO.</u>	<u>NAME OF PART</u>	<u>QTY</u>	<u>REF</u>	<u>PART NO.</u>	<u>NAME OF PART</u>	<u>QTY</u>
	1382681	Engine (Petrol)	1	7	1362008	Pin	2
	1382680	Engine (LPG)	1	8	1361675	Plug	2
1	1360897	Cylinder Block	1	9	1362009	Plug	1
2	1362005	Soft Plug	2	10	1360899	Pipe	1
3	1360898	Plug	1	11	1360896	Pin	2
4	1362003	Soft Plug	4	12	1362006	Plug	2
5	1361676	Bolt	10	13	1361677	Dipstick	1
6	1362007	Soft Plug	2				

CYLINDER HEAD PETROL AND LPG 2.0L ENGINE

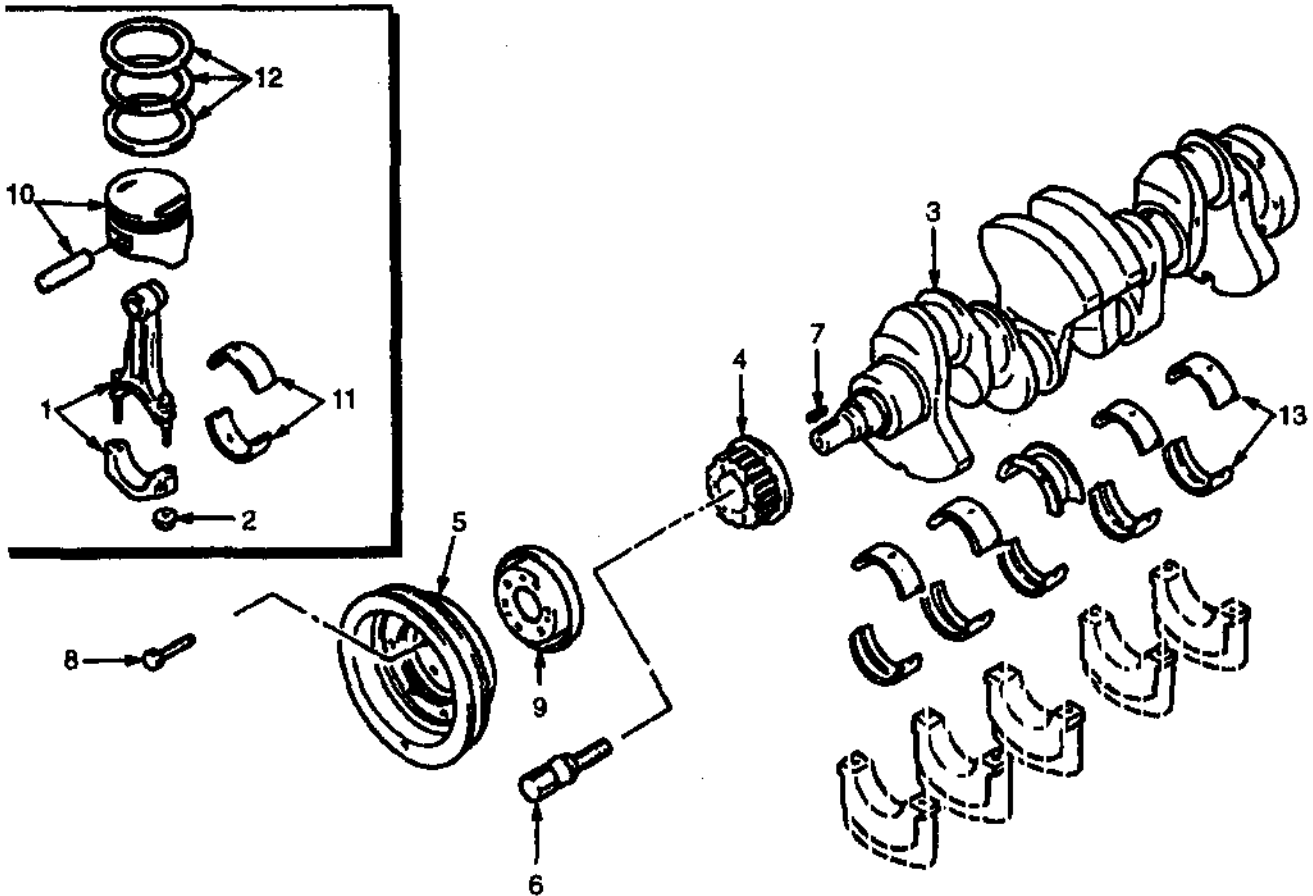
(Figure 16)



**CYLINDER HEAD
PETROL AND LPG
2.0L ENGINE**

REF	PART NO.	NAME OF PART	QTY	REF	PART NO.	NAME OF PART	QTY
1	1360878	Cylinder Head	1	18	1360892	Seal	1
2	1360895	Valve Guide	8	19	1360893	PCV Valve	1
3	1360879	Clip	8	20	1361889	Stud	4
4	1362002	Pin	10	21	1360883	Cover	1
5	1362003	Plug	1	22	1361896	Screw	12
6	1361894	Bolt	10	23	1360884	Plate	1
7	1361897	Stud	8	24	1362000	Screw	2
8	1360881	Washer	10	25	1362001	Bolt	7
9	1360885	Protector	2	26	1360880	Bolt	10
10	1360882	Cap	8	27	3021390	Engine Oil (Bulk)	AR
11 ^a	1360886	Joint	1	27	3021391	Engine Oil (209 L)	AR
12	1361898	Bolt	3	27	3021392	Engine Oil (12 Qt)	AR
13	1360887	Cap	1			^a Included in Joint Kit 1367190	
14	1360888	Joint	1			Note: The Above Parts Are Included With Engine 1382680 And 1382681	
15 ^a	1360889	Joint	1				
16	1360890	Front Hanger	1				
17	1360891	Rear Hanger	1				

CRANKSHAFT AND PISTON PETROL AND LPG 2,0L ENGINE (Figure 17)

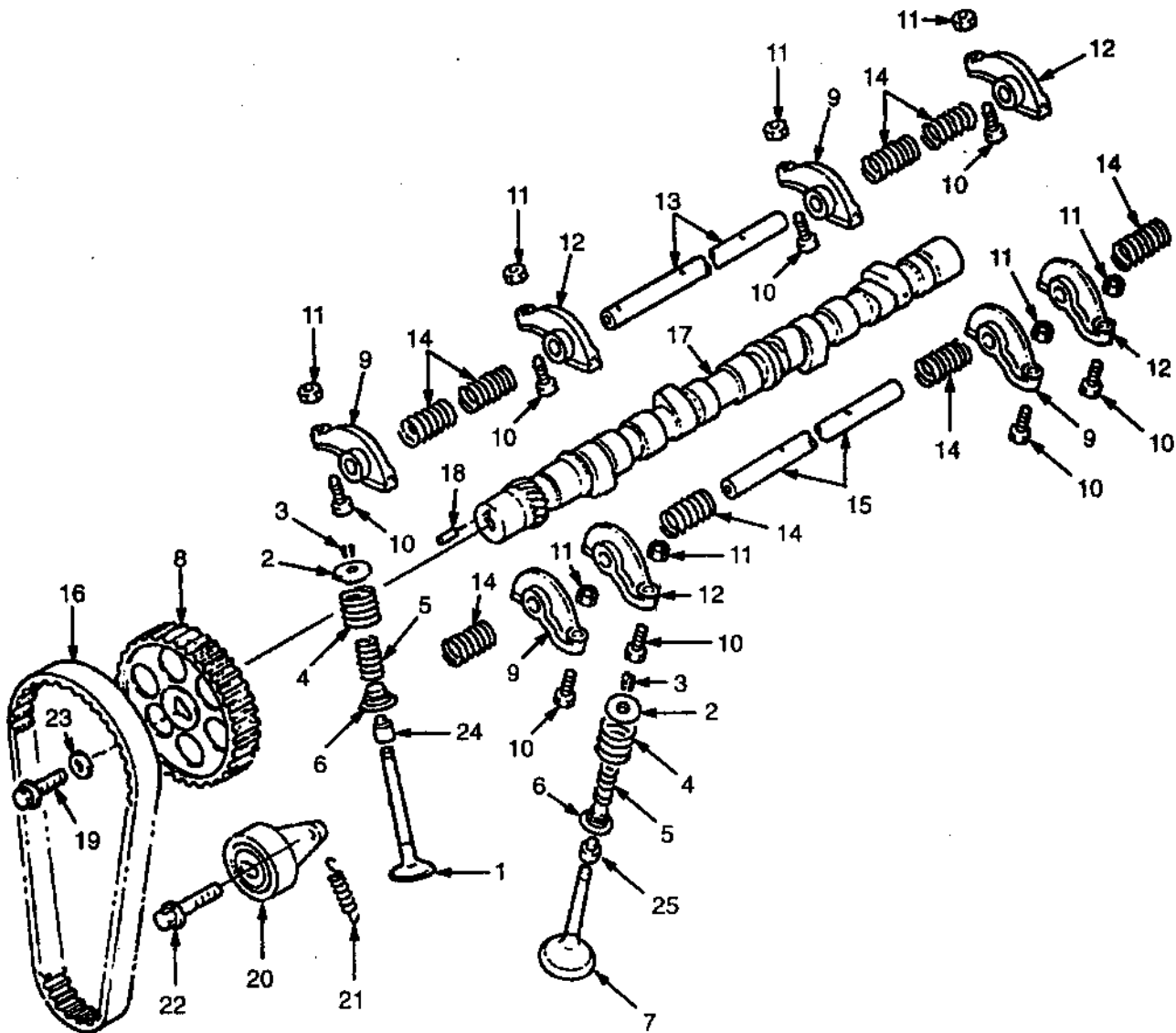


**CRANKSHAFT AND PISTON
PETROL AND LPG
2,0L ENGINE**

<u>REF</u>	<u>PART NO.</u>	<u>NAME OF PART</u>	<u>QTY</u>	<u>REF</u>	<u>PART NO.</u>	<u>NAME OF PART</u>	<u>QTY</u>
1	1361694	Connecting Rod	4	11	1361704	Bearing (0,25 mm)	1
2	1361695	Nut	8	11	1361705	Bearing (0,50 mm)	1
3	1361696	Crankshaft	1	11	1361706	Bearing (0,75 mm)	1
4	1361698	Pulley	1	12	1361707	Piston Ring Set (Standard)	1
5	1361699	Pulley	1	12	1361709	Piston Ring Set (0,25 mm)	1
6	1361701	Bolt	1	12	1361708	Piston Ring Set (0,50 mm)	1
7	1361697	Key	1	13	1361710	Bearing (Standard)	1
8	1361700	Hex Head Bolt	6	13	1361713	Bearing (0,25 mm)	1
9	1361702	Plate	1	13	1361711	Bearing (0,50mm)	1
10	1361714	Piston (Standard)	4	13	1361712	Bearing (0,75 mm)	1
10	1361715	Piston (0,25 mm)	4				
10	1361716	Piston (0,50 mm)	4				
11	1361703	Bearing (Standard)	1				

Note: The Above Parts Are Included With
Engine 1382680 And 1382681

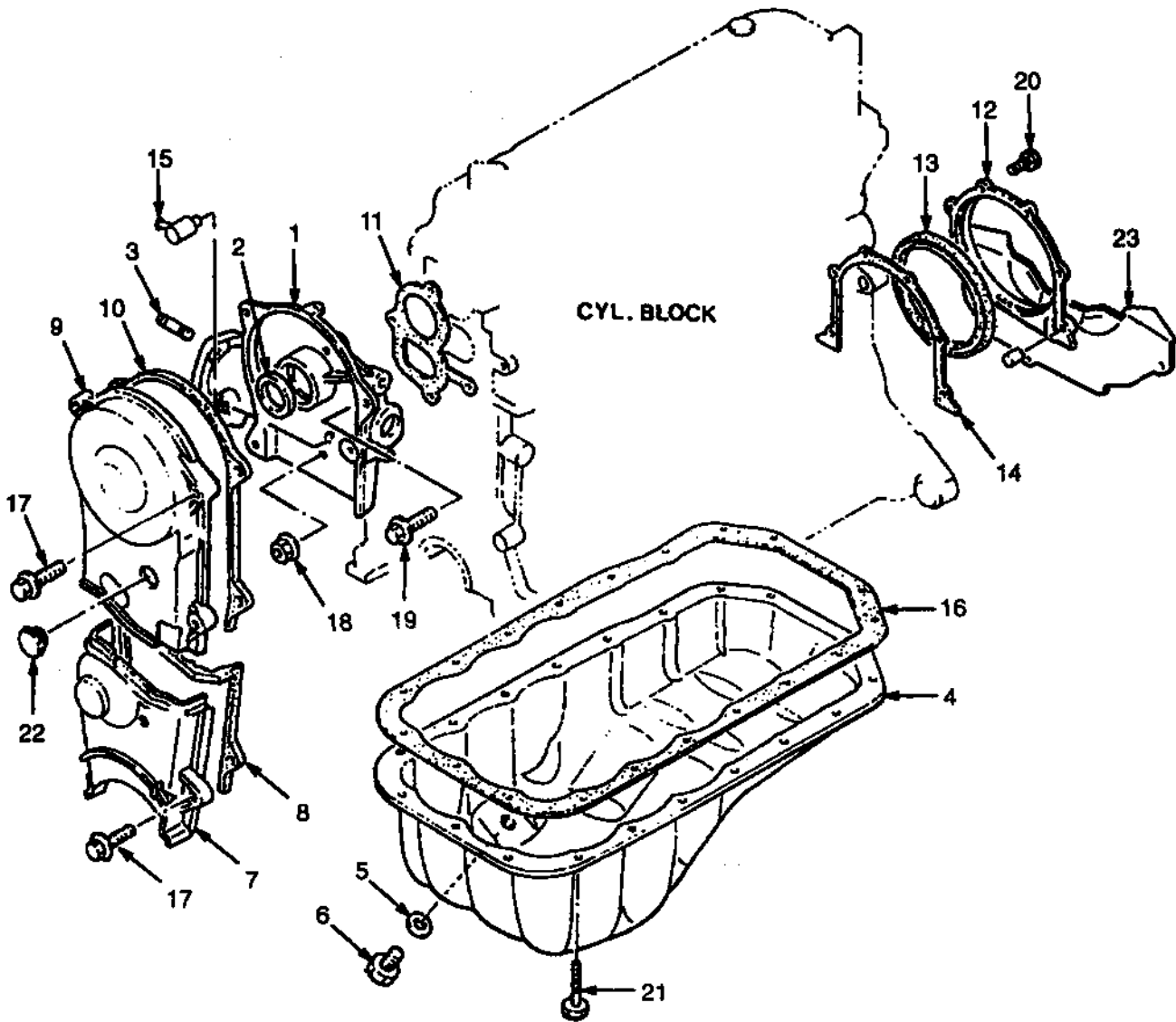
CAMSHAFT AND VALVES PETROL AND LPG 2.0L ENGINE (Figure 18)



**CAMSHAFT AND VALVES
 PETROL AND LPG
 2.0L ENGINE**

REF	PART NO.	NAME OF PART	QTY	REF	PART NO.	NAME OF PART	QTY
1	1361720	Inlet Valve	4	16	1361733	Timing Belt	1
2	1361721	Valve Seat	8	17	1361734	Camshaft	1
3	326612	Sleeve	8	18	1361717	Pin	1
4	1361722	Spring	8	19	1361736	Bolt	1
5	1361723	Spring	8	20	1361738	Belt Tensioner	1
6	1361724	Valve Seat	8	21	1361739	Spring	1
7	1361725	Exhaust Valve	4	22	1362016	Bolt	1
8	1361735	Pulley	1	23	1361737	Washer	1
9	1361726	Rocker Arm	4	24 ^a	1361718	Seal	4
10	1361727	Screw	8	25 ^a	1361719	Seal	4
11	1361728	Nut	8	^a Included In Kit-Joint 1367190			
12	1361729	Rocker Arm	4	Note: The Above Parts Are Included With Engine 1382680 And 1382681			
13	1361730	Shaft	1				
14	1361731	Spring	8				
15	1361732	Shaft	1				

TIMING GEAR COVER AND OIL SUMP PETROL AND LPG 2.0L ENGINE (Figure 19)



**TIMING GEAR COVER AND OIL SUMP
PETROL AND LPG
2.0L ENGINE**

REF	PART NO.	NAME OF PART	QTY
1	1361678	Housing	1
2 ^a	1361688	Oil Seal	1
3	1362012	Stud	2
4	1361680	Oil Sump	1
5	1362015	Joint	1
6	1361681	Drain Plug	1
7	1361683	Cover	1
8 ^a	1361684	Joint	1
9	1361686	Cover	1
10 ^a	1361687	Joint	1
11 ^a	1361679	Joint	1
12	1361689	Cover	1
13 ^a	1361691	Oil Seal (Rear)	1
14 ^a	1361690	Joint	1

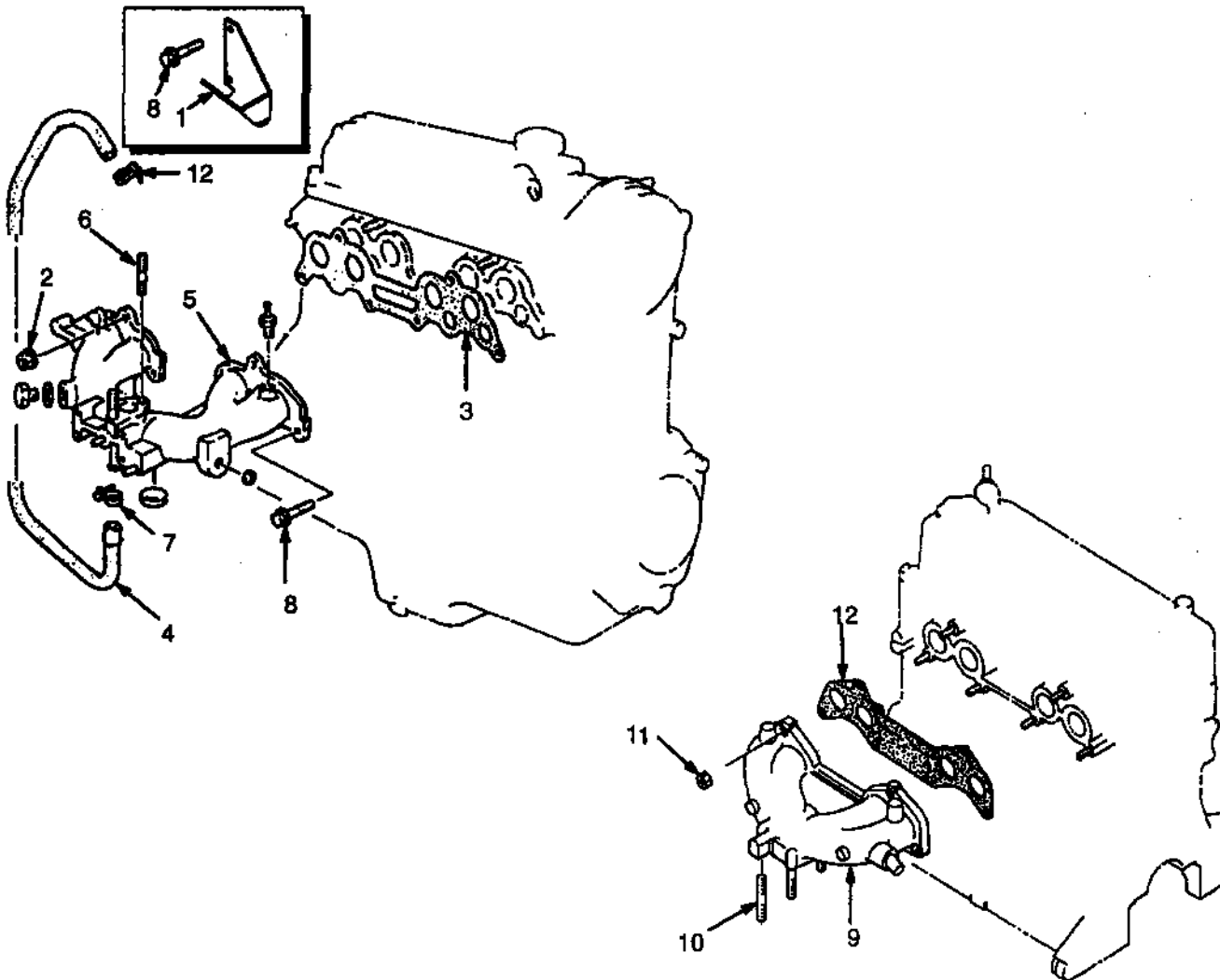
REF	PART NO.	NAME OF PART	QTY
15	1361692	Hose Connector	1
1 ^a	1361682	Joint	1
17	1362001	Bolt	6
18	326504	Nut	2
19	1362013	Bolt	2
20	1362011	Bolt	6
21	1370736	Bolt	19
22	1361685	Plug	1
23	1371652	Cover	1

^a Included In Joint Kit 1367190

Note: The Above Parts Are Included With
Engine 1382680 And 1382681

MANIFOLD

(Figure 20)



**MANIFOLD
PETROL AND LPG**

REF	PART NO.	NAME OF PART	QTY
1	1361743	Bracket (Petrol)	1
1	1376620	Bracket (LPG)	1
2	326504	Nut	4
3	1361742	Joint	1
4 ^a	1377116	Hose	1
5	1361740	Inlet Manifold	1
6	1362017	Stud	2
7	1361873	Clamp	2
8	1361885	Bolt	4

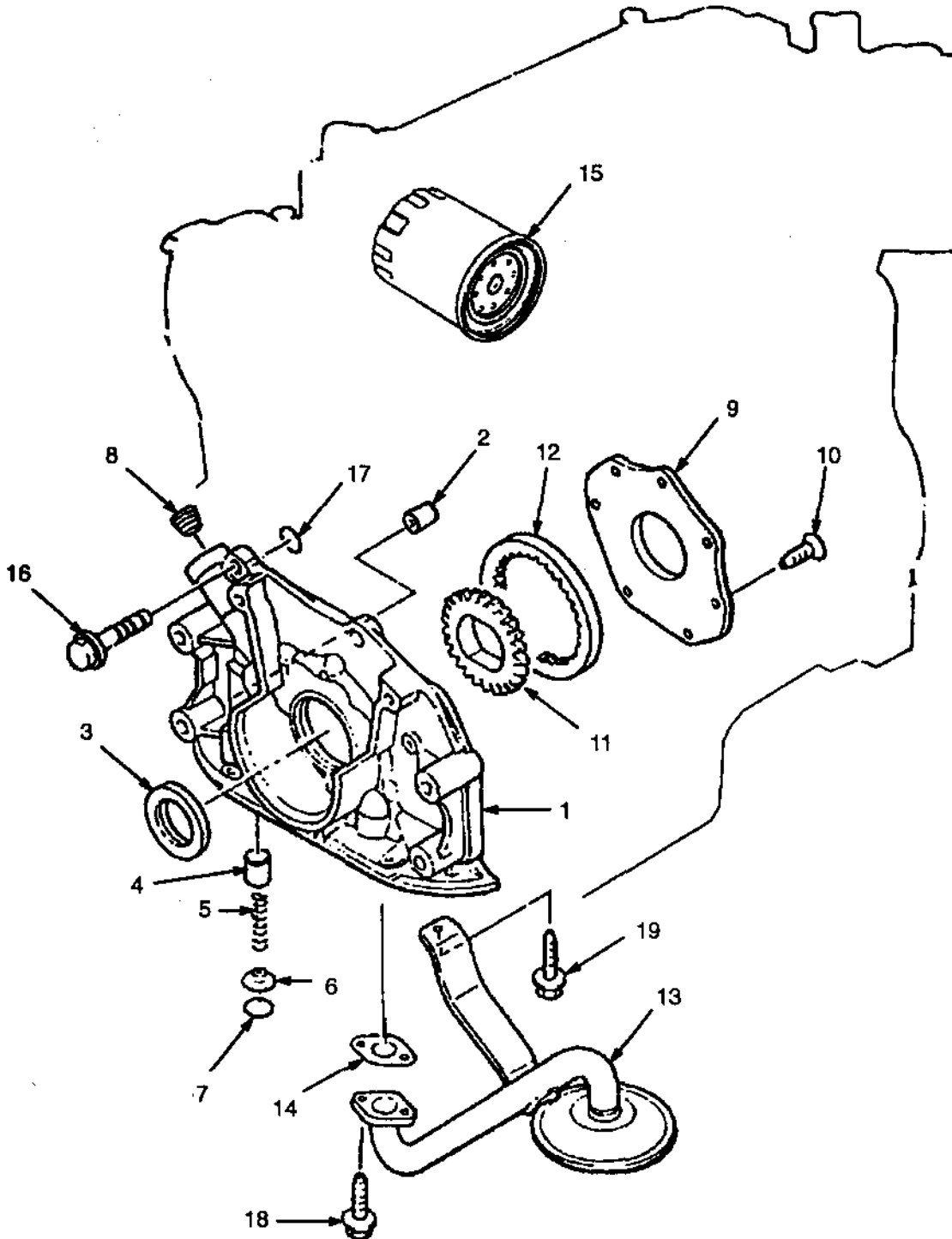
REF	PART NO.	NAME OF PART	QTY
9	1361744	Exhaust Manifold	1
10	1361745	Stud	4
11	1361746	Nut	6
12	1361747	Joint	1

^a Petrol

Note: The Above Parts Are Included With
Engine 1382680 And 1382681

OIL PUMP AND FILTER PETROL AND LPG 2,0L ENGINE

(Figure 21)

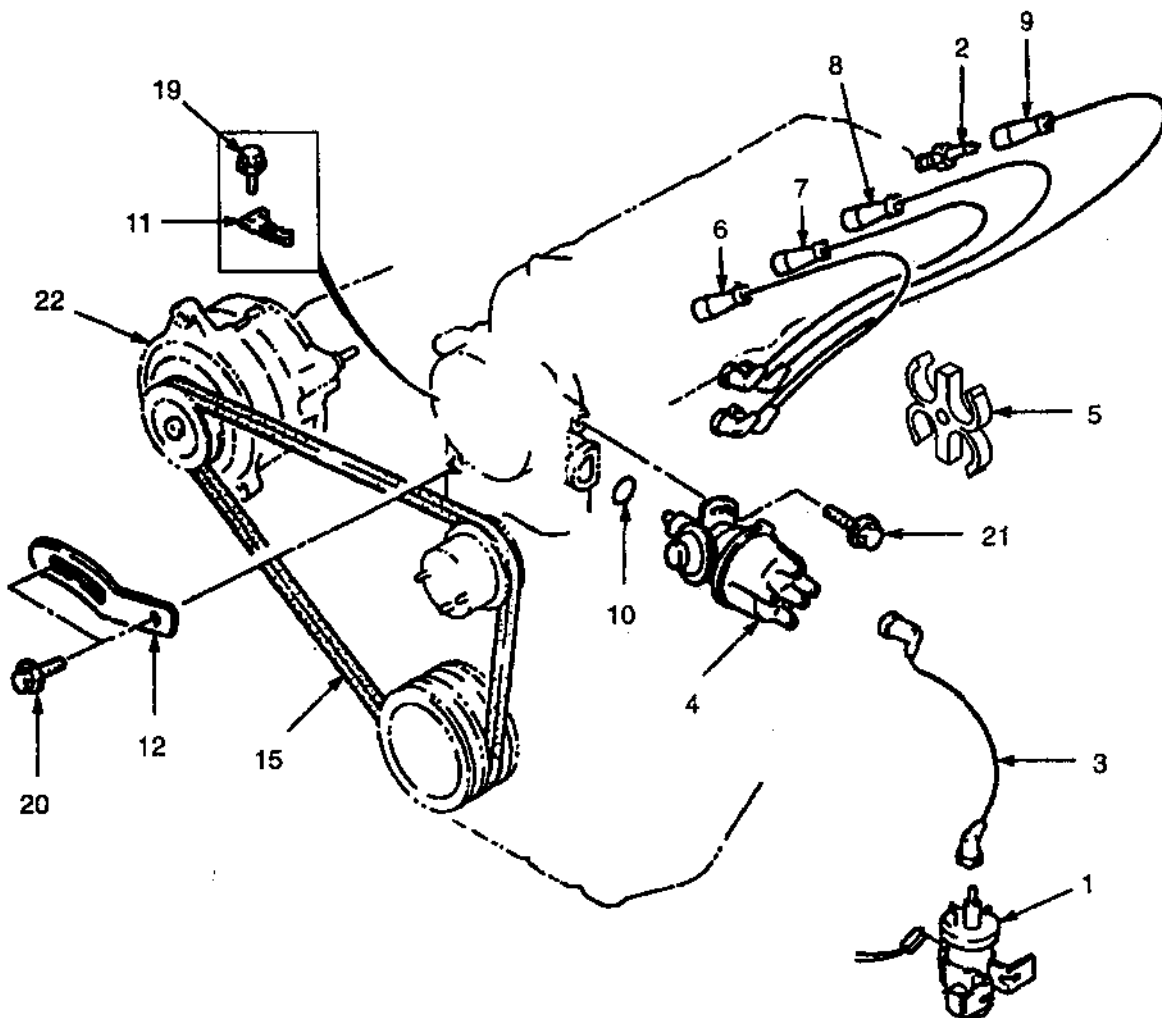
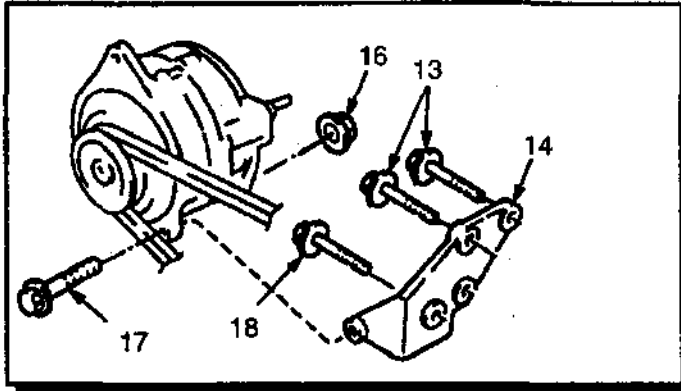


**OIL PUMP AND FILTER
PETROL AND LPG
2,0L ENGINE**

<u>REF</u>	<u>PART NO.</u>	<u>NAME OF PART</u>	<u>QTY</u>	<u>REF</u>	<u>PART NO.</u>	<u>NAME OF PART</u>	<u>QTY</u>
1	1361800	Oil Pump	1	13	1361806	Strainer	1
2	1361798	Dowel Pin	2	14 ^a	31361807	Joint	1
3 ^a	1361688	Oil Seal	1	15	324692	Oil Filter	1
4	326747	Plunger	1	16	1361875	Bolt	2
5	326748	Spring	1	17 ^a	1361801	O-Ring	1
6	326749	Spring Seat	1	18	1361878	Bolt	2
7	1361879	Circlip	1	19	1361868	Bolt	1
8	1368790	Plug	1	^a Included In Joint Kit 1367190			
9	1361802	Cover	1	Note: The Above Parts Are Included With			
10	1361803	Screw	7	Engine 1382680 And 1382681			
11	1361804	Drive Gear	1				
12	1361805	Driven Gear	1				

ELECTRICAL PETROL AND LPG 2.0L ENGINE

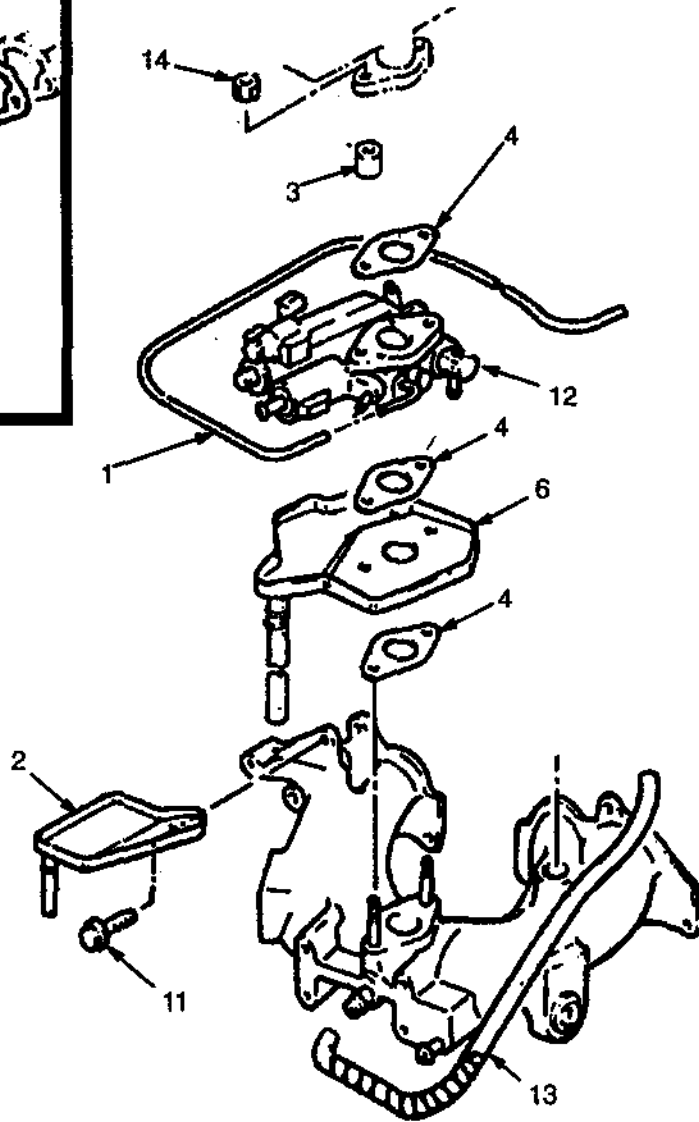
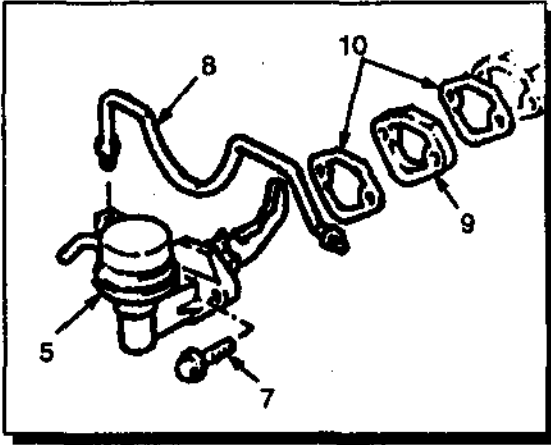
(Figure 22)



ELECTRICAL PETROL AND LPG 2.0L ENGINE

REF	PART NO.	NAME OF PART	QTY	REF	PART NO.	NAME OF PART	QTY
1	Ignition Coil	1	14	1361846	Bracket.....	1
		Figure 70		15	1384008	Belt	1
2	1361837	Spark Plug	4	16	1361890	Nut	1
3	1361839	Cable	1	17	1361889	Bolt	1
4	Distributor	1	18	1361888	Bolt	2
		☛ Figure 81		19	1361893	Bolt	1
5	1361838	Support	1	20	1361881	Bolt	2
6	1361840	Ignition Cable (1)	1	21	1361895	Bolt	1
7	1361841	Ignition Cable (2)	1	22	Alternator	1
8	1361842	Ignition Cable (3)	1			☛ Figure 83	
9	1361843	Ignition Cable (4)	1			a Included In Joint Kit 1367190	
10 ^a	326850	O-Ring	1			Note: The Above Parts Are Included With	
11	1361844	Protector	1			Engine 1382680 And 1382681	
12	1361845	Strap	1				
13	1361891	Bolt	2				

FUEL PETROL AND LPG 2,0L ENGINE (Figure 23)



**FUEL
PETROL AND LPG
2,0L ENGINE**

KEY:
A: LPG
B: Petrol

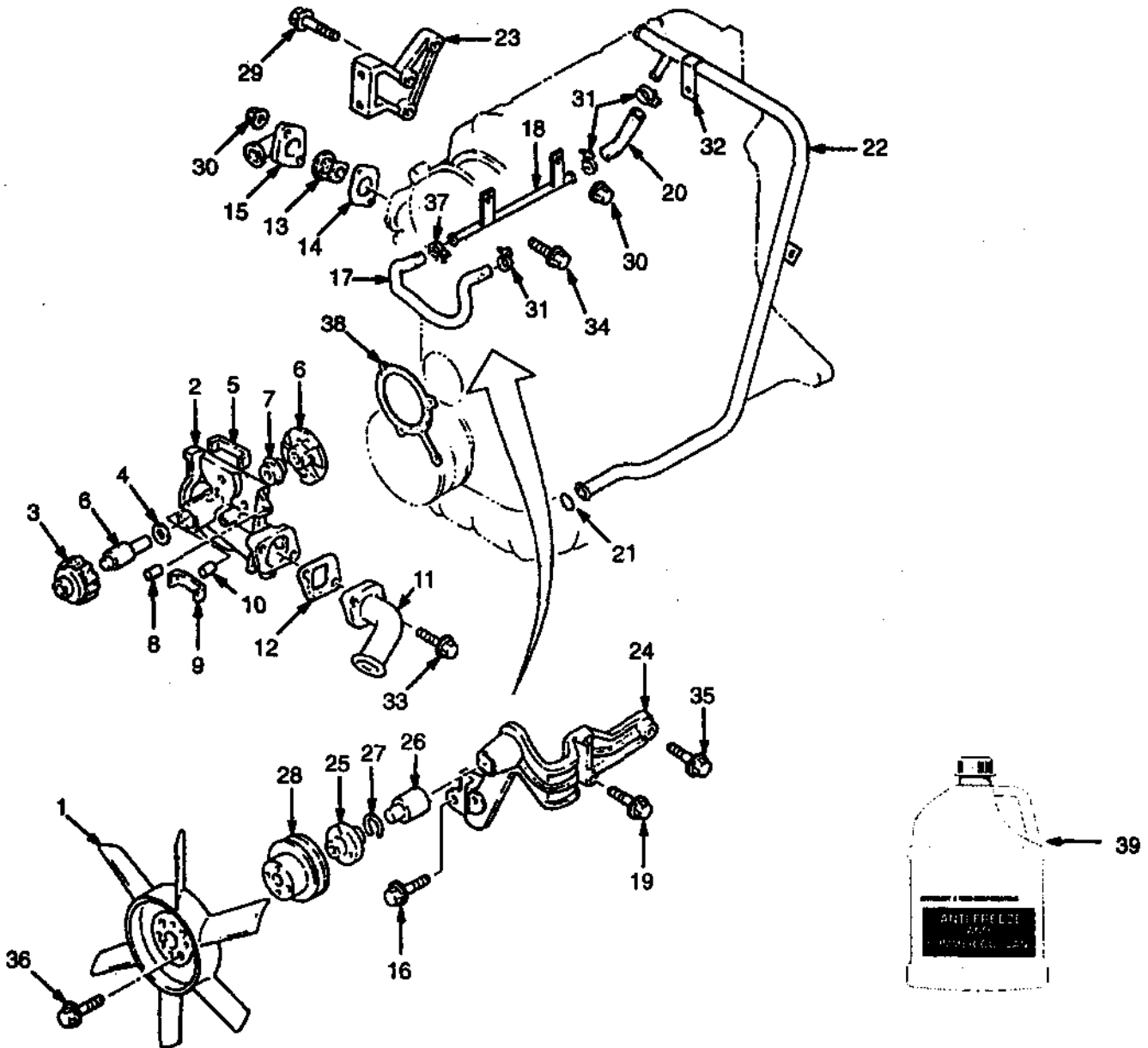
REF	PART NO.	NAME OF PART	QTY	
			A	B
1	1361773	Hose	1	1
2	1361754	Deflector	1	1
3	1361761	Spacer	2	..
4	1361752	Joint	2	3
5	1361753	Fuel Pump	1	..
6	1361750	Deflector	1	..
7	1361885	Bolt	2	..
7	1361898	Bolt	2	..
8	1361760	Pipe	1	..
9	1361749	Cover	1	..

REF	PART NO.	NAME OF PART	QTY	
			A	B
9	1361755	Insulator	1	..
10	1361756	Joint	1	2
11	1361868	Bolt	2	..
12	Governor	1	..
		↳ Figure 51		
13	1360894	Hose(PCV)	1	1
14	326504	Nut	2	2

Note: The Above Parts Are Included With
Engine 1382680 And 1382681

COOLING PETROL AND LPG 2,0L ENGINE

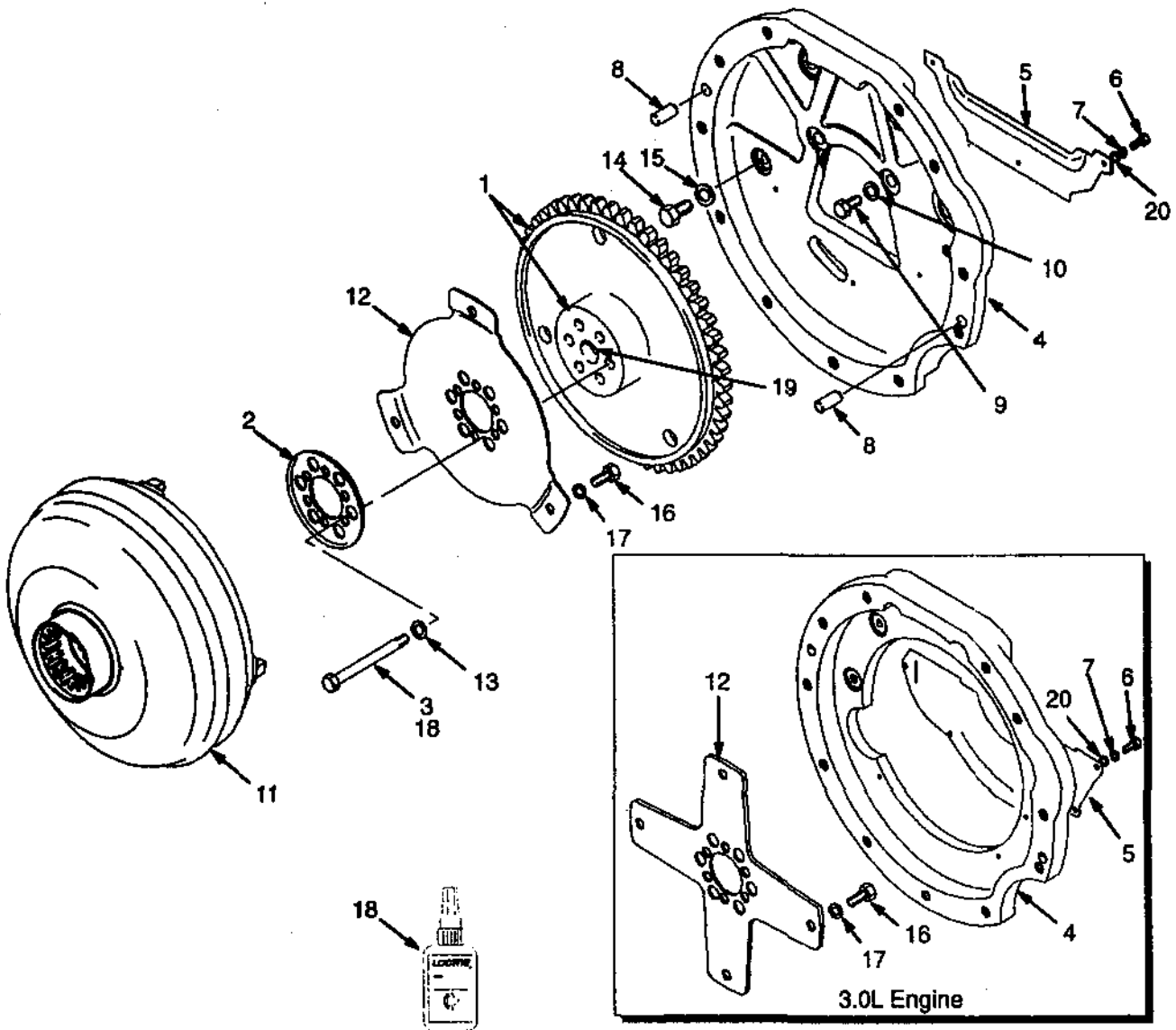
(Figure 24)



**COOLING
 PETROL AND LPG
 2,0L ENGINE**

REF	PART NO.	NAME OF PART	QTY	REF	PART NO.	NAME OF PART	QTY
1	1361817	Fan	1	23	1361829	Bracket	1
2	1361811	WaterPump	1	24	1361830	Idler	1
3	1361816	Pulley	1	25	1361813	Hub	1
4	1361815	Plate	1	26	1361832	Shaft	1
5 ^a	1361810	Seal	1	27	1361835	Ring	1
6	Shaft And Impeller	1	28	1384006	Pulley	1
7	1361814	Seal	1	29	1361885	Bolt	3
8	1361880	Pin	1	30	326504	Nut	3
9 ^a	1361809	Seal	1	31	1361873	Hose Clamp	3
10	1361834	Pin	1	32	1361826	Clamp	1
11	1361818	Inlet Pipe	1	33	1361881	Bolt	2
12 ^a	1361819	Joint	1	34	1361885	Bolt	1
13	1361820	Thermostat (82° C)	1	35	1361882	Bolt	1
14 ^a	1367191	Joint	1	36	1361878	Bolt	1
15	1361821	Outlet Cover	1	37	1361833	Clamp	1
16	324707	Bolt	2	38 ^a	1361812	Joint	1
17	1361825	Hose	1	39	3027456	Antifreeze (22.8 L)	AR
18	1361823	Pipe	1	39	3027457	Antifreeze (209 L)	AR
19	1361884	Bolt	3	^a Included In Joint Kit 1367190			
20	1361824	Hose	1	Note: The Above Parts Are Included With Engine 1382680 And 1382681			
21 ^a	1361827	O-Ring	1				
22	1361828	Pipe	1				

FLYWHEEL PETROL AND LPG (Figure 25)



FLYWHEEL PETROL AND LPG

KEY:

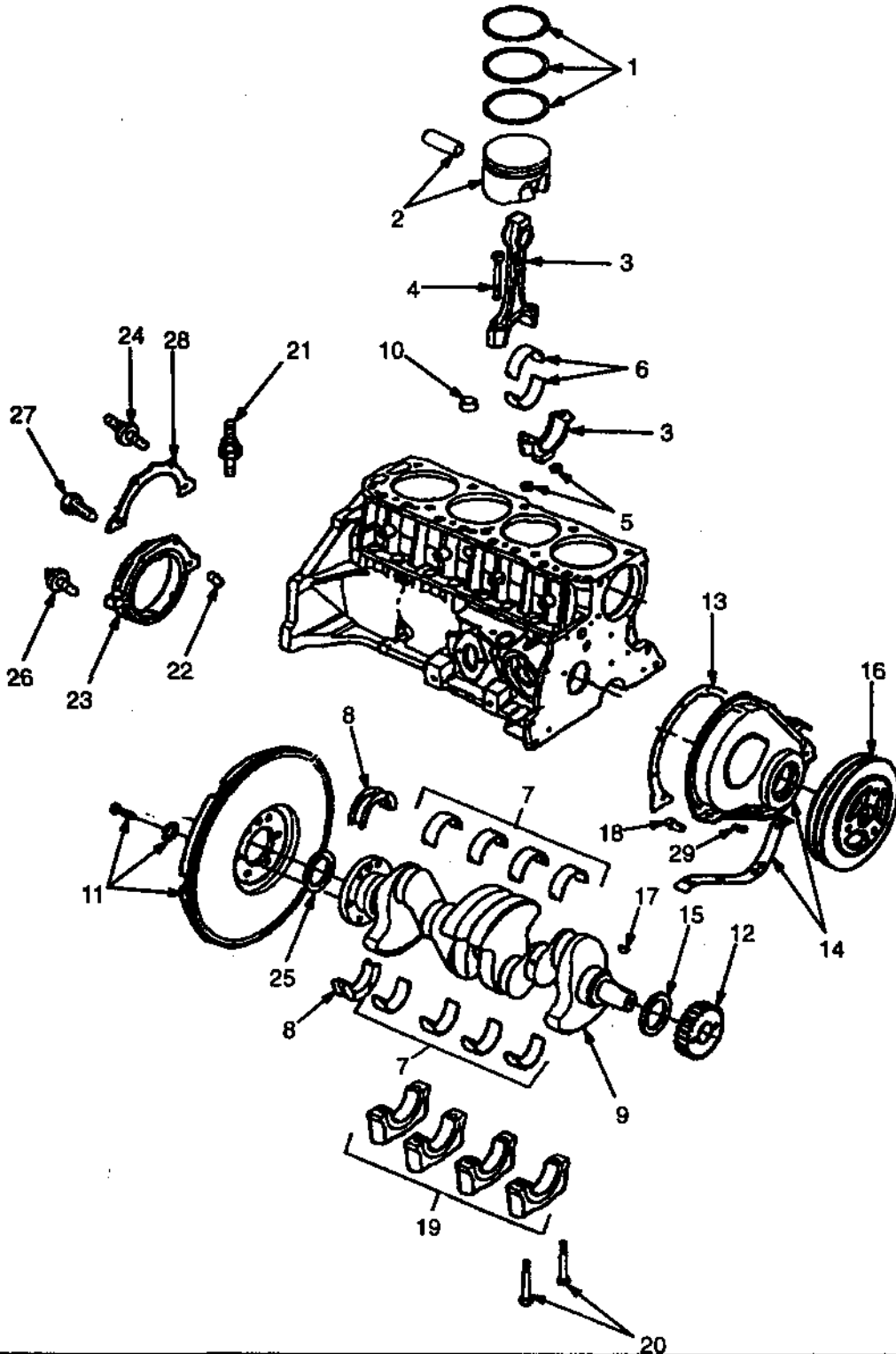
A: 2,01- Engine

B: 3,01- Engine

REF	PART NO.	NAME OF PART	QTY		REF	PART NO.	NAME OF PART	QTY	
			A	B				A	B
1	1378558	Flywheel	1	..	8	302385	Pin	2	2
1	1386800	Spacer	1	..	9	305371	Hex Head Bolt	6	..
1	1389359	Flywheel	1	..	9	177461	Hex Head Bolt	6	..
1	1386799	Spacer	1	..	10	296424	Washer	6	..
2	1337093	Washer	1	..	10	221767	Washer	6	..
2	1375144	Washer	1	..	11	1386795	Torque Converter (3,15)	1	1
3	1347157	Hex Head Bolt	6	..	12	1394915	Drive Plate	1	1
3	221544	Hex Head Bolt	6	..	13	296422	Washer	6	..
4	1335937	Housing	1	..	13	221769	Washer	6	..
4	1375145	Housing	1	..	14	293614	Hex Head Bolt	1	..
5	1371652	Cover	1	..	15	296418	Washer	1	..
5	1371584	Cover	1	..	16	15942	Bolt	3	4
6	148962	Hex Head Bolt	5	..	17	261379	Washer	3	4
6	292513	Hex Head Bolt	3	..	18	360387	Adhesive	AR	AR
7	292680	Spring Washer	5	..	19	251979	Lubricant	AR	AR
7	292682	Lockwasher	3	..	20	18500	Washer	2	2

CRANKSHAFT AND PISTON PETROL AND LPG 3,01- ENGINE

(Figure 26)

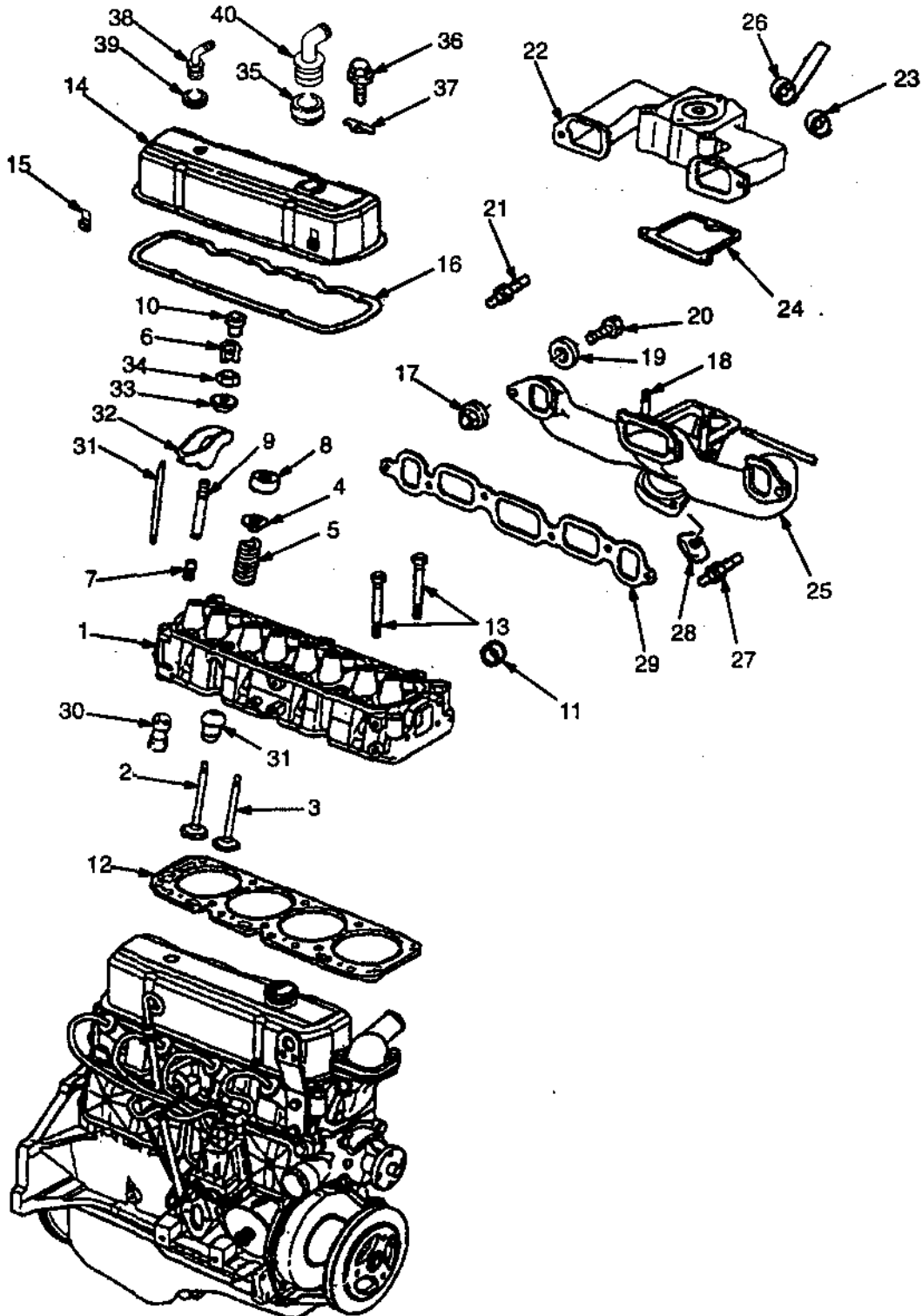


**CRANKSHAFT AND PISTON
PETROL AND LPG
3,01- ENGINE**

REF	PART NO.	NAME OF PART	QTY	REF	PART NO.	NAME OF PART	QTY
	1453580	Engine	1	10 ^a	164022	Plug	1
1 ^a	306774	Piston Ring Set (Standard)	4	11	Flywheel	1
1	375550	Piston Ring Set (0,760 mm)	4			Figure.25	
2 ^a	304619	Piston And Pin (Standard)	4	12	265509	Gear	1
2	304620	Piston And Pin (0,510mm)	4	13	388321	Joint	1
3 ^a	301190	Rod Assy	4	14	189609	Cover Assy	1
4 ^a	289344	Bolt	2	15	1374107	Oil Seal (Front)	2
5 ^a	1375954	Nut	2	16	169942	Damper	1
6 ^a	169964	Rod Bearing (Standard)	8	17	7882	Key	1
6	169966	Rod Bearing (0,051 mm)	8	18 ^a	148827	Oil (Nozzle)	1
6	169752	Rod Bearing (0,510 mm)	8	19 ^a	244903	Main Bearing (Cap)	4
6	169965	Rod Bearing (0,025 mm)	8	20 ^a	159973	Bolt	10
6	169967	Rod Bearing (0,250 mm)	8	21	164023	Stud	1
7 ^a	1331335	Main Bearing (Standard)	4	22	375601	Pin	1
7	1331336	Main Bearing (0,025 mm)	4	23	375572	Retainer Assy	1
7	149814	Main Bearing (0,250 mm)	4	24	388364	Stud	2
7	160602	Main Bearing (0,510 mm)	4	25	375555	Seal	1
7	149816	Main Bearing (0,760 mm)	4	26	1375953	Bolt	1
8 ^a	149805	Main Bearing (Standard)	1	27	1330459	Bolt	2
8	1331325	Main Bearing (0,025 mm)	1	28	1335212	Joint	1
8	1378320	Main Bearing (0,640 mm)	1	29	370169	Screw And Washer	8
9	1455601	Crankshaft	1			^a Included In Short Block 1331338	

CYLINDER HEAD PETROL AND LPG 3,0L ENGINE

(Figure 27)

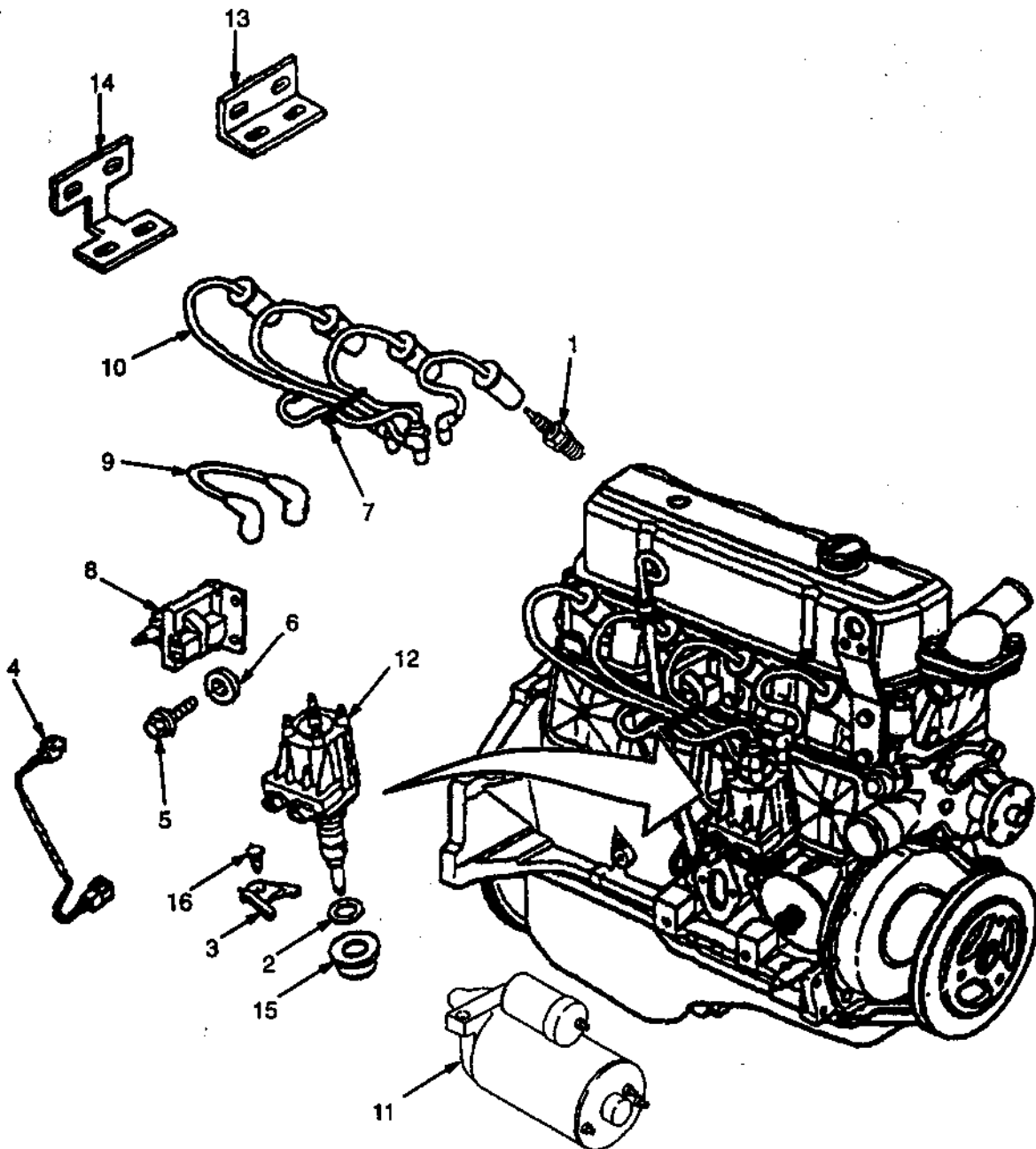


**CYLINDER HEAD
PETROL AND LPG
3,0L ENGINE**

REF	PART NO.	NAME OF PART	QTY	REF	PART NO.	NAME OF PART	QTY
	1453580	Engine	1	18	149889	Stud	2
1	1378317	Cylinder Head	1	19	1335219	Lockwasher	6
2	244909	Inlet Valve (Standard)	4	20	1331349	Bolt	6
2	149864	Inlet Valve (0,076 mm)	4	21	254686	Stud	1
2	244910	Inlet Valve (0,380 mm)	4	22	244922	Inlet Manifold	1
2	244911	Inlet Valve (0,760 mm)	4	23	244925	Thermostat	1
3	381250	Exhaust Valve (Standard)	4	24	1330772	Joint	1
3	381270	Exhaust Valve (0,380 mm)	4	25	271949	Exhaust Manifold	1
3	381271	Exhaust Valve (0,760 mm)	4	26	160377	Spring	1
4	149868	Cap	8	27	1300295	Stud	2
5	145172	Valve Spring	8	28	149888	Clamp	4
6	263750	Valve (Key)	16	29	1354046	Joint	1
7	145173	Valve (Seal)	8	30	263839	Hydraulic Lifter	8
8	314539	Shield	8	31	1354047	Push Rod (Assy)	8
9	149857	Stud (0,076 mm)	8	32	245202	Rocker Arm	8
9*	149858	Stud (0,330 mm)	8	33	189614	Ball	8
10	149867	Rotator	4	34	301195	Nut	8
11	160361	Plug	2	35	1376789	Grommet	1
12	1331343	Joint	1	36	1374108	Bolt	4
13	149977	Bolt	10	37	149978	Special Washer	5
14	1331344	Valve Cover	1	38	321734	Vent Valve	1
15	1335825	Clip	1	39	164050	Grommet	1
16	388323	Joint	1	40	379407	Fitting	1
17	1375954	Nut	8			*Optional	

ELECTRICAL PETROL AND LPG 3.0L ENGINE

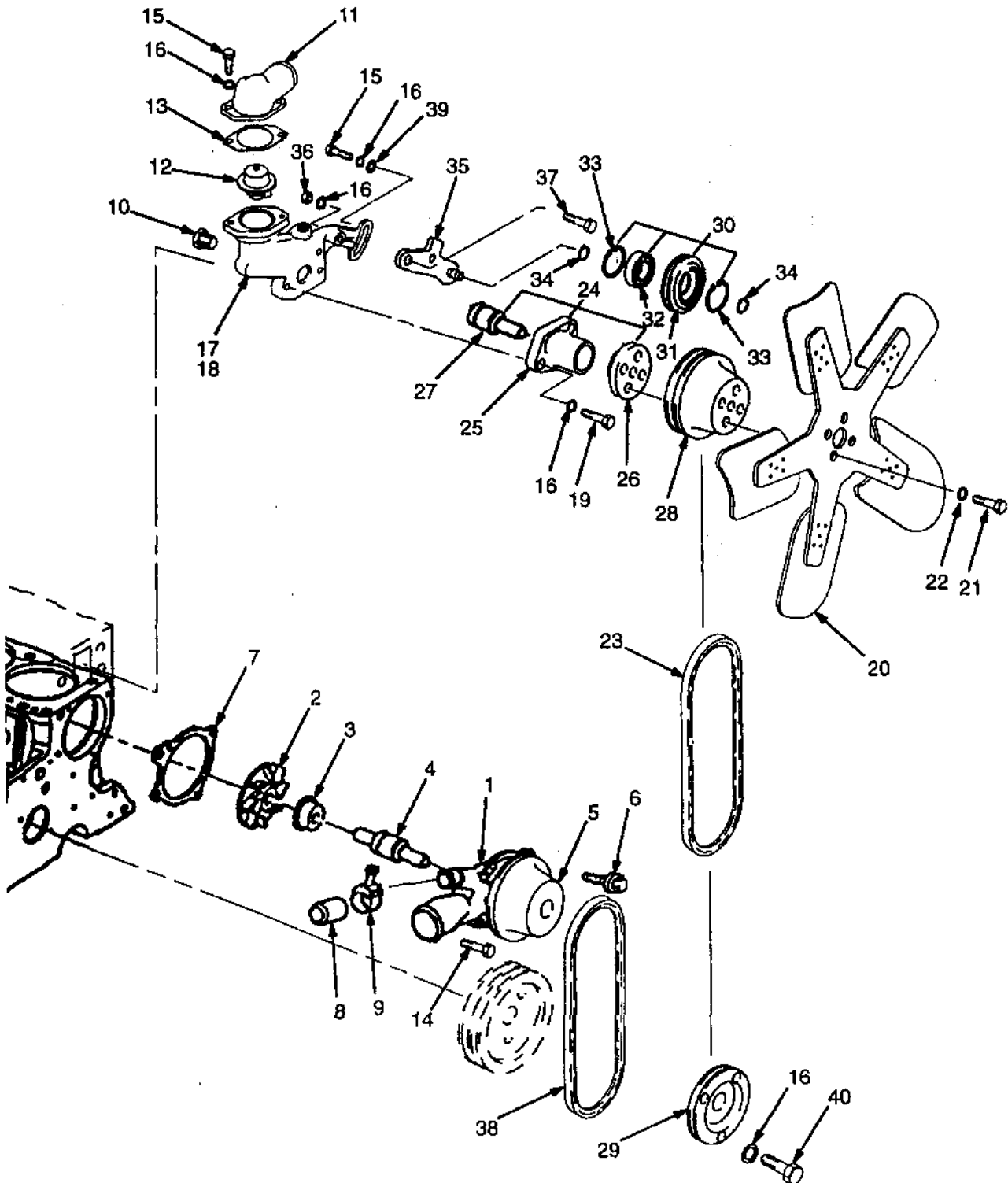
(Figure 28)



ELECTRICAL
PETROL AND LPG
3.0L ENGINE

REF	PART NO.	NAME OF PART	QTY	REF	PART NO.	NAME OF PART	QTY
	1453580	Engine	1				
1	281844	Spark Plug	4	10	1337666	Spark Plug (Harness)	1
2	1330467	Joint	1	11	1391321	Starter Motor	1
3	274247	Clamp	1	12	Distributor	1
4	1331329	Wire Assy	1			Figure 82	
5	1455602	Bolt	2	13	1378318	Bracket (Top)	1
6	15134	Washer	2	14	1378319	Bracket (Bottom)	1
7	1335828	Retainer	1	15 ^a	159974	Washer	1
8	1331331	Ignition Coil	1	16	1331349	Screw	1
9	1337665	Wire Assy	1			^a Included in Short Block 1393427	

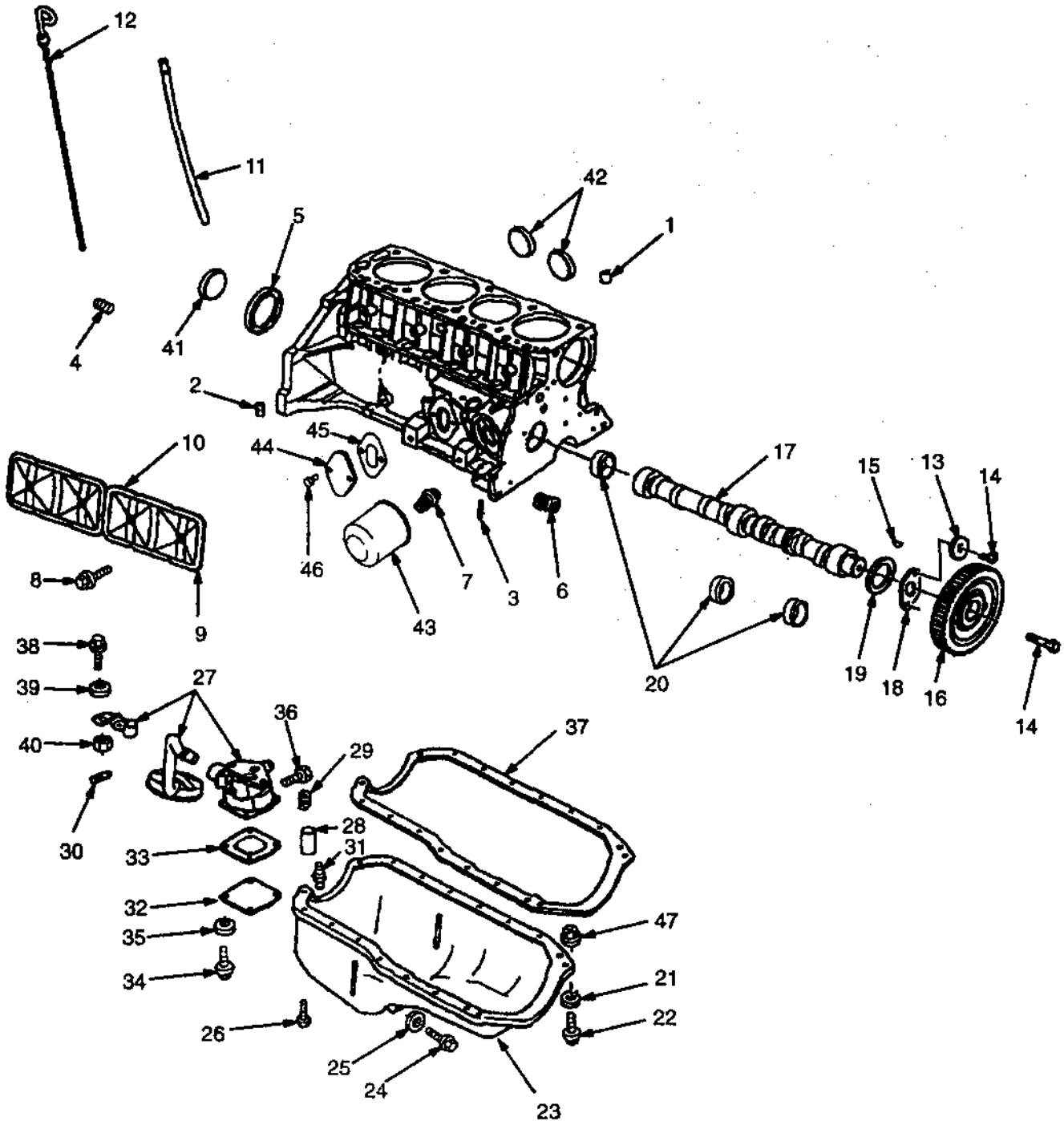
COOLING PETROL AND LPG 3.0L ENGINE (Figure 29)



**COOLING
PETROL AND LPG
3.0L ENGINE**

REF	PART NO.	NAME OF PART	QTY	REF	PART NO.	NAME OF PART	QTY
	1453580	Engine	1	23	191845	Belt	1
1 ^a		Water Pump	1	24	1458164	Drive Fan	1
2 ^a		Impeller	1	24	1456071	Drive Fan Subassembly	1
3 ^a		Seal	1	25		Housing	1
4 ^a		Bearing	1	26	1360215	Hub	1
5 ^a		Pulley	1	27	1358532	Bearing	1
6	221455	Hex Head Bolt	2	28	1458163	Fan Pulley	1
7 ^a	1330456	Joint	1	29	1375196	Crankshaft Pulley	1
8	149929	Cap	1	30	1359103	Idler Assy	1
9	1335224	Clamp	1	31	1359102	Pulley	1
10	14386	Plug	1	32	3002793	Bearing	1
11	1317468	Outlet	1	33	12928	Circlip	2
12	1450696	Thermostat (180° F)	1	34	54123	Circlip	2
13	1330725	Joint	1	35	1359100	Bracket	1
14	14387	Fitting	1	36	15056	Nut	1
15	16805	Hex Head Bolt	3	37	16379	Hex Head Bolt	1
16	15156	Lockwasher	10	38	188643	Belt (Water Pump)	1
17	1371582	Thermostat Housing	1	39	296421	Washer	1
18	264159	Adhesive	AR	40	16814	Hex Head Bolt	3
19	18538	Hex Head Bolt	3	41	18508	Hex Head Bolt	2
20	8504145	Fan	1	^a Included In Water Pump Kit 1383997			
21	16825	Hex Head Bolt	4				
22	15155	Lockwasher	4				

CAMSHAFT AND OIL SUMP PETROL AND LPG 3.0L ENGINE (Figure 30)



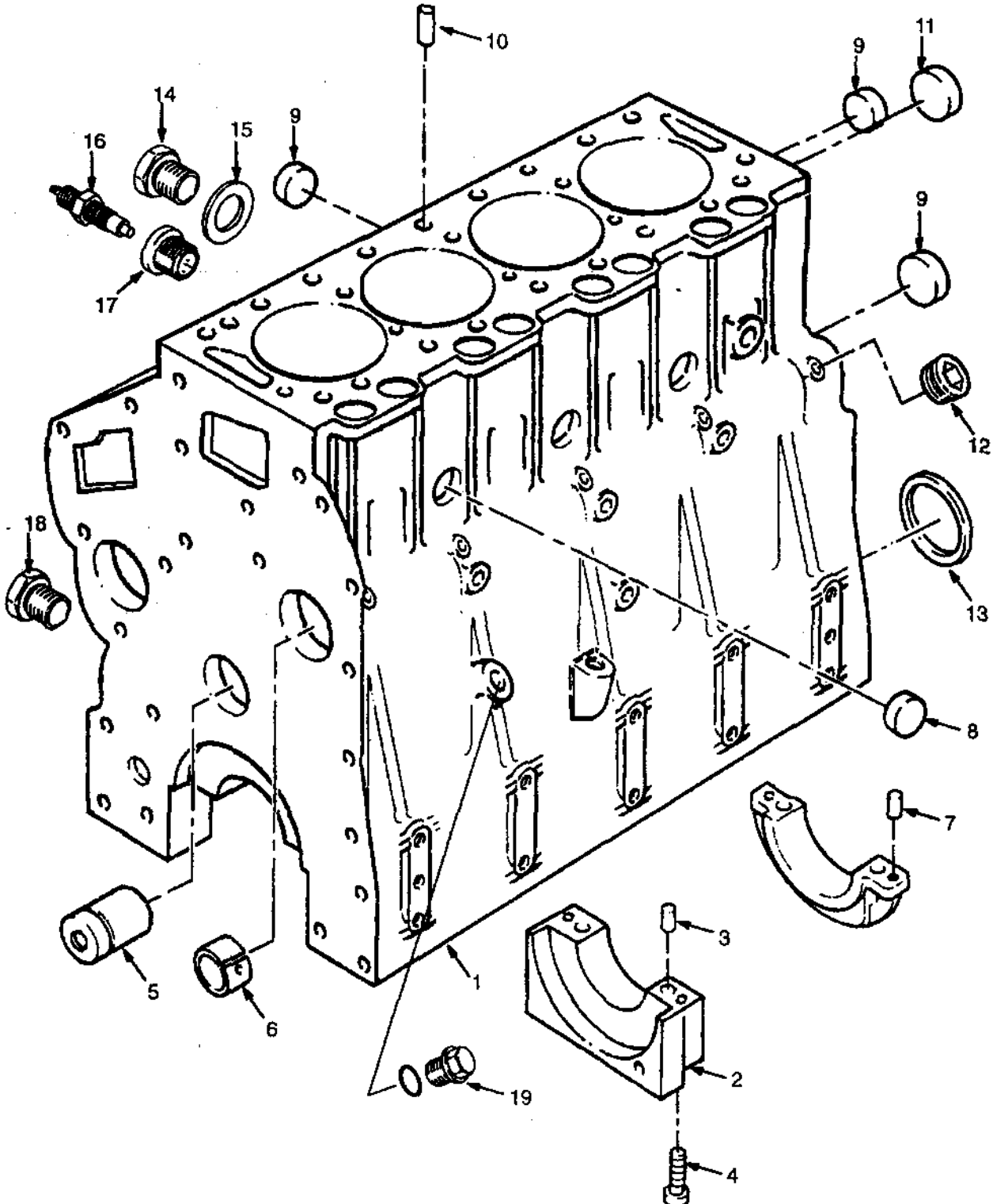
**CAMSHAFT AND OIL SUMP
PETROL AND LPG
3.0L ENGINE**

REF	PART NO.	NAME OF PART	QTY	REF	PART NO.	NAME OF PART	QTY
	1393580	Engine	1	25	388305	Joint	1
1 ^a	1354814	Pump Shaft Bearing	1	26	16374	Hex Head Bolt	2
2 ^a	1331341	Plug	1	27	1312813	Oil Pump	1
3 ^a	159977	Pin	8	28	145176	Oil Pressure Valve	1
4 ^a	1335499	Pin	2	29	145177	Spring	1
5 ^a	164017	Plug	1	30	1330453	Pin	1
6 ^a	1375952	By-Pass Valve	1	31	177563	Plug	1
7	159942	Fitting	1	32	149846	Cover	1
8	277450	Bolt	4	33	149847	Joint	1
9	244933	Cover	1	34	16709	Screw	4
10	1457062	Sealant	AR	35	15154	Lockwasher	4
11	1458089	Tube	1	36	221453	Hex Head Bolt	3
12	1335222	Dipstick	1	37	1330452	Joint	1
13	15923	Washer	2	38	221420	Hex Head Bolt	1
14	133469	Hex Head Bolt	3	39	388316	Washer	1
15	7882	Key	1	40	145641	Nut	1
16	149898	Gear	1	41 ^a	169719	Plug	1
17	1362070	Camshaft	1	42 ^a	169718	Plug	2
18	1356838	Thrust Plate	1	43	127644	Oil Filter	1
19	1324006	Spacer	1	44	145949	Cover	1
20 ^a	149819	Bearing	3	45	149934	Joint	1
21	15154	Lockwasher	14	46	199566	Hex Head Bolt	2
22	1376876	Bolt	14	47	15055	Nut	2
23	1360759	Oil Sump	1				
24	308624	Screw	1				

^a Included In Short Block 1331338

CYLINDER BLOCK DIESEL 2.6L

(Figure 31)



CYLINDER BLOCK DIESEL 2.6L

REF	PART NO.	NAME OF PART	QTY	REF	PART NO.	NAME OF PART	QTY
	1453348	Engine	1	11 ^a	982155	Plug	10
1 ^a	Cylinder Block	1	12 ^a	1457446	Dowel	2
2 ^a	Cap	1	13 ^a	1457447	Seal	1
3 ^a	1457409	Seal	2	14	349378	Plug	1
4 ^a	1457410	Screw	10	15	361338	Washer	1
5 ^a	1457413	Shaft	1	16	842863	Switch	1
6 ^a	1457414	Bush	1	17	1457911	Adapter	1
7 ^a	1457415	Seal	4	18	245800	Plug	1
8 ^a	1457416	Plug	3	19	1377908	Plug	1
9 ^a	1388387	Plug	6				
10 ^a	385531	Plug	1				

^a Included In Cylinder Block Kit 1457408

**CYLINDER HEAD
DIESEL
2.6L**

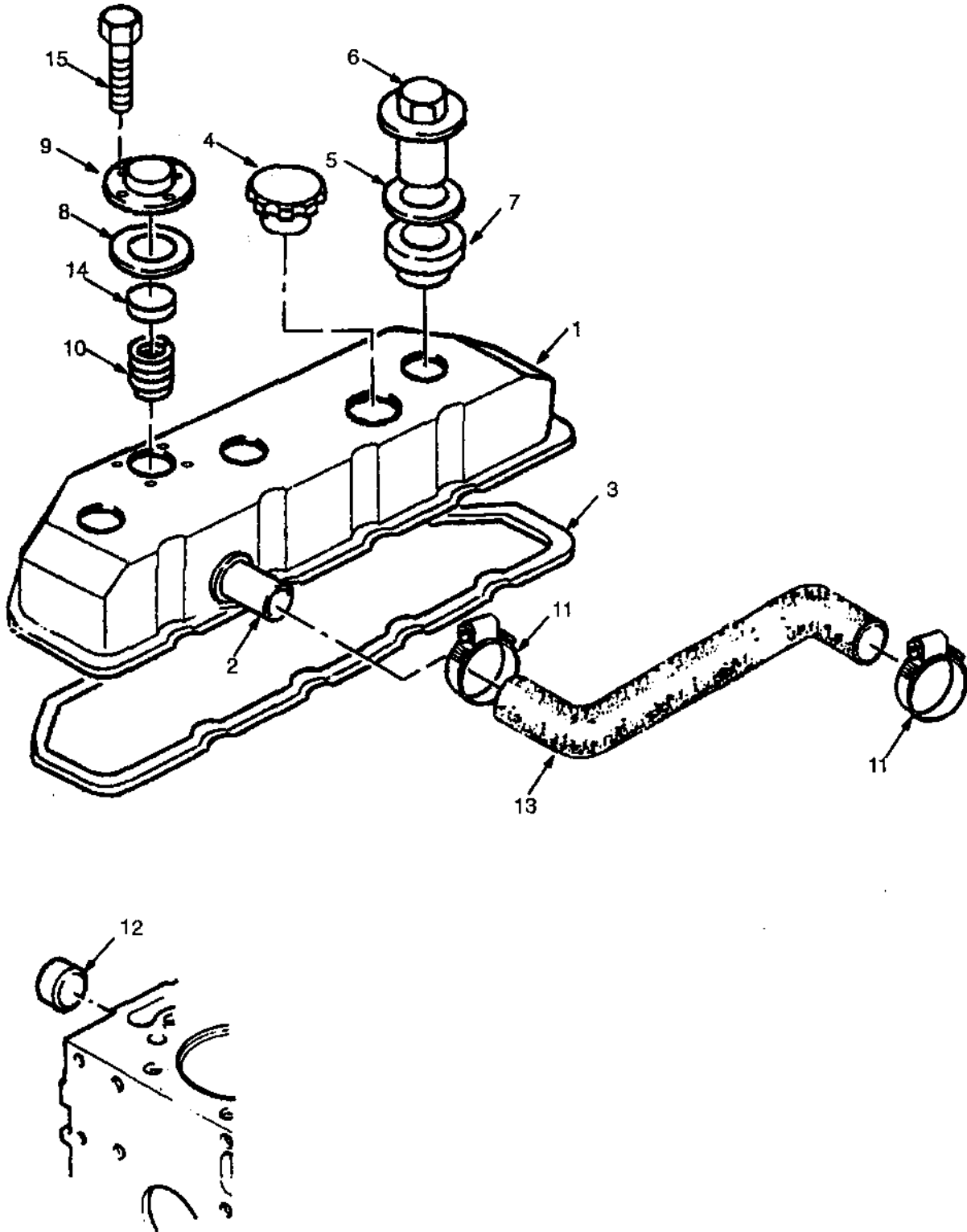
<u>REF</u>	<u>PART NO.</u>	<u>NAME OF PART</u>	<u>QTY</u>	<u>REF</u>	<u>PART NO.</u>	<u>NAME OF PART</u>	<u>QTY</u>
^a	Cylinder Head	1	12 ^a	1457502	Valve Keeper	16
1 ^a	1457494	Guide	8	13 ^a	1457503	Inlet Valve	4
2 ^{ab}	1457495	Seal	8	14 ^a	1457504	Screw	14
3 ^a	1457496	Insert	4	15 ^a	1457505	Screw	4
4 ^a	1457497	Insert	4	16 ^{ab}	1457506	Head (Joint)	1
5 ^a	1388387	Plug	2	17	1457903	Glow Plug	4
6 ^a	15962	Plug	4	18	1457904	Cable	4
7 ^a	365854	Plug	1	19	1457905	Plate	2
8 ^a	1457498	Plug	4	20	1307881	Screw	4
9 ^a	1457499	Exhaust Valve	4				
10 ^a	1457500	Spring	8				
11 ^a	1457501	Cap	8				

^a Included In Cylinder Head Kit 1457493

^b Included In Top Joint Kit 1457955

VALVE COVER DIESEL 2.6L

(Figure 33)

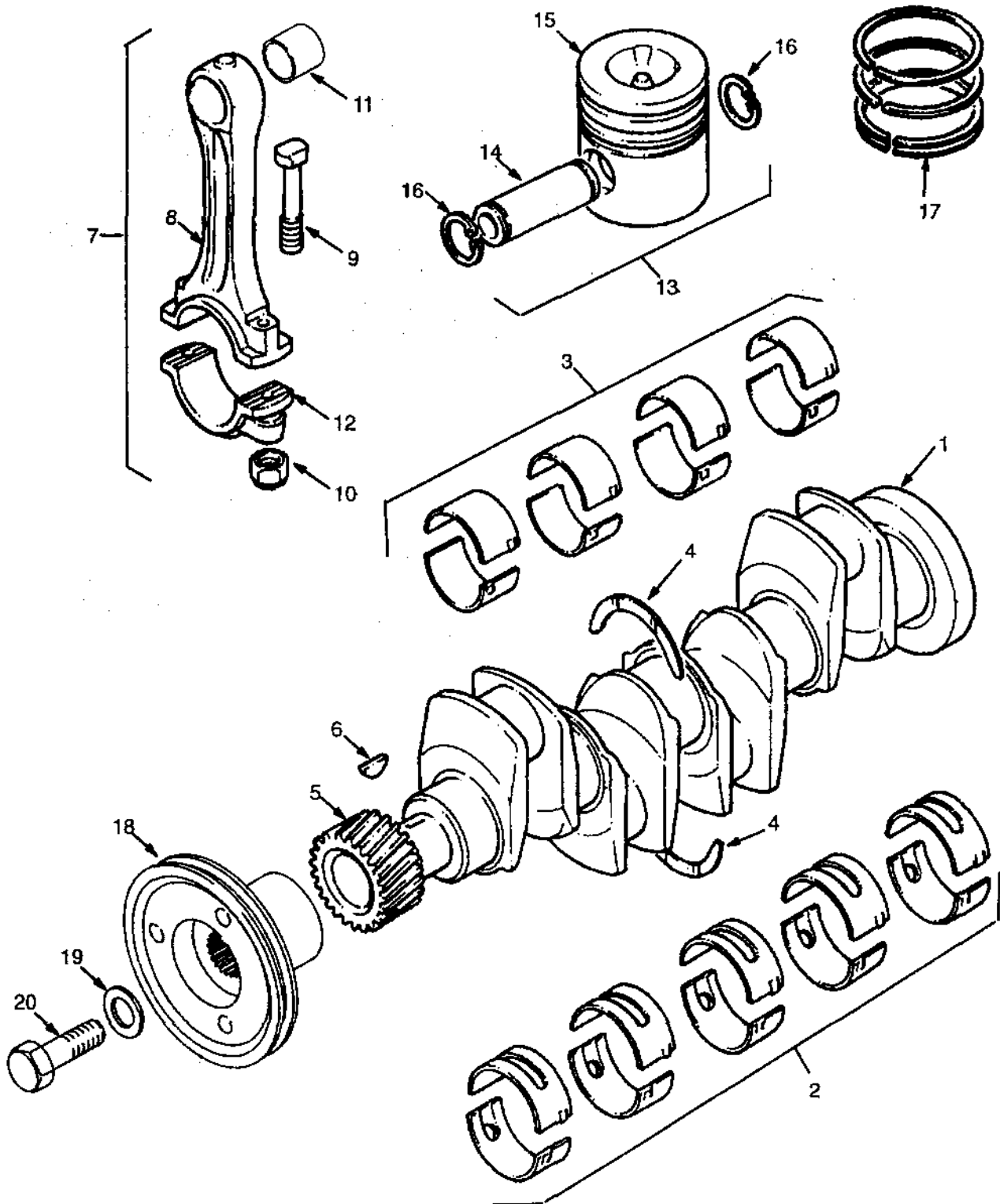


VALVE COVER DIESEL 2.6L

REF	PART NO.	NAME OF PART	QTY	REF	PART NO.	NAME OF PART	QTY
1	1457811	Valve Cover	1	9	1457822	Cover	1
2	Pipe	1	10	1457825	Spring	1
3	1457819	Joint	1	11	130845	Clamp	2
4	1457821	Cap	1	12	15304	Plug	2
5	15125	Washer	1	13	1457827	Hose	1
6	1457820	Nut	1	14	1457824	Plate	1
7	1380245	Seal	1	15	1457826	Screw	4
8	1457823	Seal	1				

CRANKSHAFT AND PISTONS DIESEL 2.6L

(Figure 34)

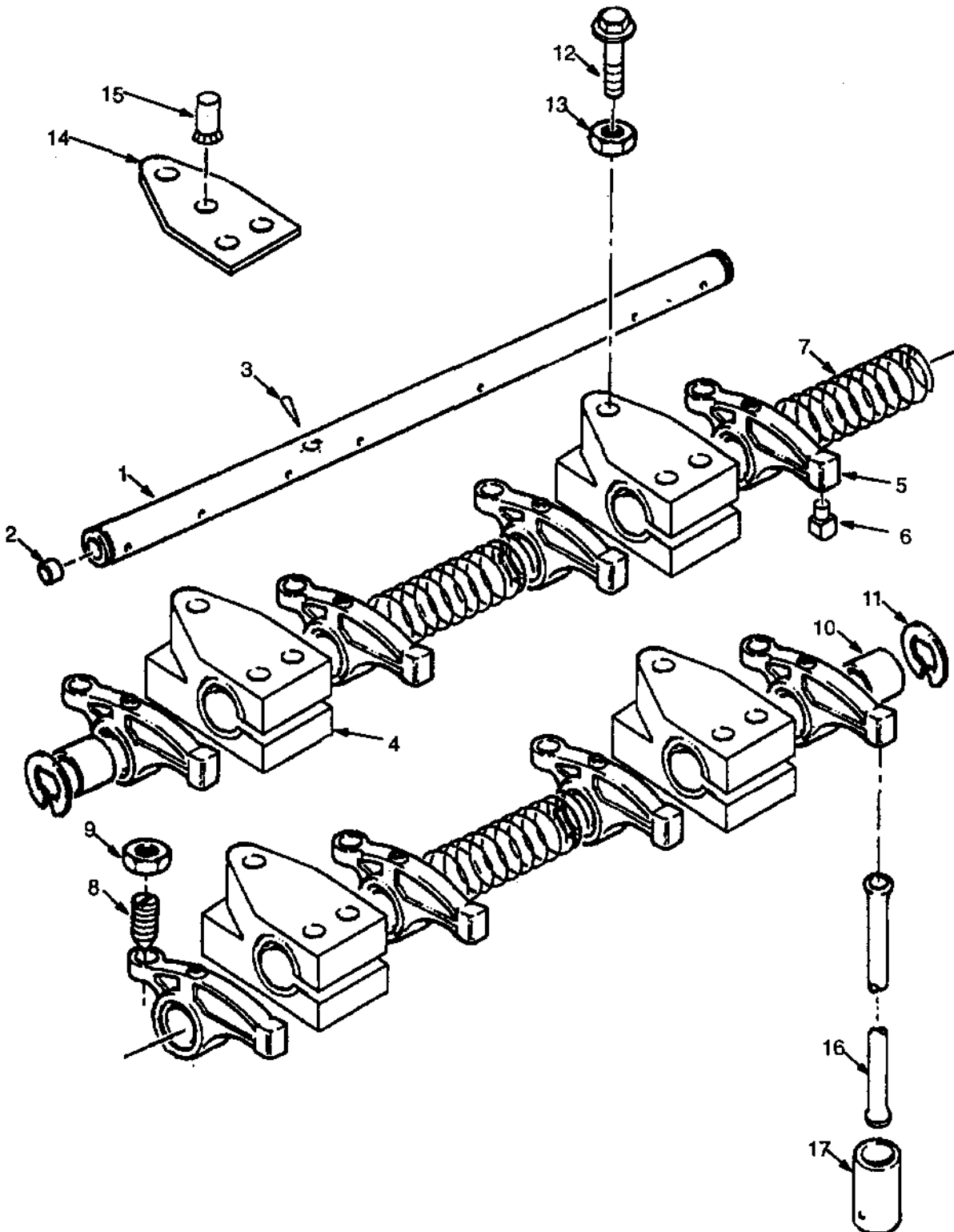


**CRANKSHAFT AND PISTONS
DIESEL
2.6L**

REF	PART NO.	NAME OF PART	QTY	REF	PART NO.	NAME OF PART	QTY
1 ^a	Crankshaft	1	8	Rod	1
2 ^a	1457449	Bearing Set (Main)	1	9	1457484	Bolt	2
2 ^a	1457450	Bearing Set (0,25 mm)	1	10	1457485	Nut	2
2 ^a	1457451	Bearing Set (0,50 mm)	1	11	1457486	Bush	1
2 ^a	1457452	Bearing Set (0,75 mm)	1	12	Cap	1
3 ^a	1457453	Connecting Rod Bearing Set	1	13	1457487	Piston Assy	4
3 ^a	1457454	Connecting Rod Bearing Set (0,25 mm)	1	13	1457488	Piston Assy (0,50 mm)	4
3 ^a	1457478	Connecting Rod Bearing Set (0,50 mm)	1	14	Pin	1
3 ^a	1457479	Connecting Rod Bearing Set (0,75 mm)	1	15	Piston	1
4 ^a	1457480	Thrust Washer	1	16	1457489	Circlip	2
4 ^a	1457481	Thrust Washer (0,2 mm)	1	17	1457490	Kit-Piston Ring	4
5 ^a	1457482	Gear	1	17	1457491	Kit-Piston Ring (Large)	4
6 ^a	99610	Key	1	18	1457844	Pulley	1
7	1457583	Rod Assy	1	19	1457846	Washer	1
				20	1457845	Screw	1

^aIncluded In Crankshaft Kit 1457448

ROCKER ARM SHAFT DIESEL 2.6L (Figure 35)



**ROCKER ARM SHAFT
DIESEL
2.6L**

<u>REF</u>	<u>PART NO.</u>	<u>NAME OF PART</u>	<u>QTY</u>	<u>REF</u>	<u>PART NO.</u>	<u>NAME OF PART</u>	<u>QTY</u>
	1457508	Rocker Arm Shaft Assy	1	9	1307887	Nut	8
1	1457509	Rocker Arm Shaft	1	10	1457515	Spacer	2
2	158017	Plug	2	11	1457516	Circlip	2
3	1457510	Pin	1	12	1457517	Screw	8
4	1457511	Bracket	1	13	1306359	Nut	4
5	1457512	Lever	8	14	1457518	Plate	3
6	Pad	1	15	1457519	Stud	1
7	1457513	Spring	3	16	1457520	Push Rod	8
8	1457514	Screw	8	17	1457521	Tappet	8

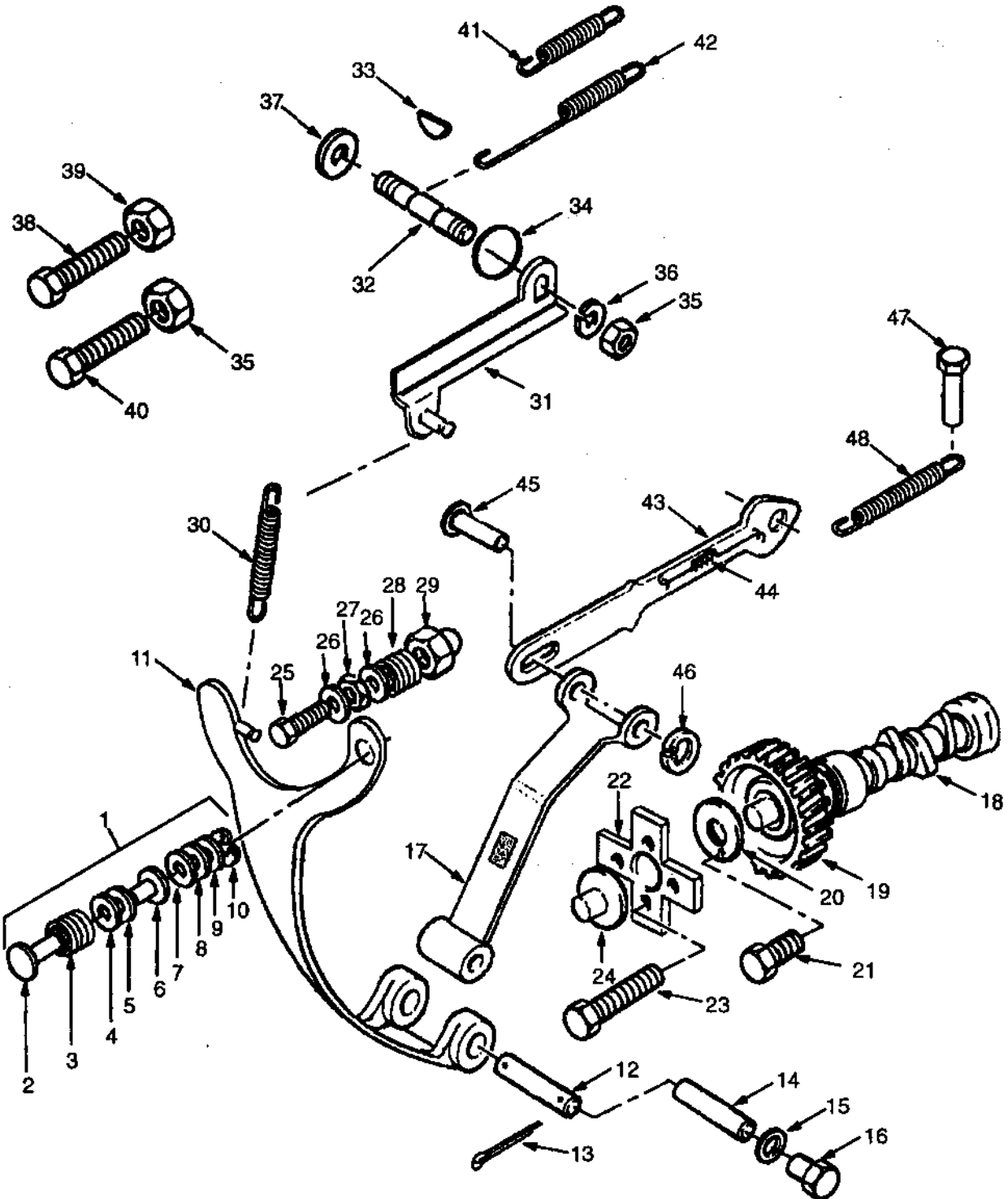
**CAMSHAFT AND TIMING GEAR
DIESEL
2.6L**

REF	PART NO.	NAME OF PART	QTY	REF	PART NO.	NAME OF PART	QTY
1	1457646	Timing Gear Cover	1	20	1457660	Bush	2
2	1457647	Sleeve	2	21	1457661	Washer	2
3 ^a	1457648	Joint	1	22	1457662	O-Ring	1
4	1457649	Plate	1	23	1315766	Washer	2
5 ^a	1457650	Joint	1	24	1306357	Screw	5
6	1457651	Seal	1	25	1307901	Stud	2
7	1306182	Plug	2	26	1306359	Nut	2
8	386459	Screw	1	27	1457652	Screw	1
9	1306362	Screw	3	28	1307908	Screw	1
10	1307909	Screw	1	29	1306362	Screw	1
11	1457653	Dowel	2	30	1307898	Screw	2
12	1307881	Screw	4	31	1318968	Screw	1
13	1457654	Camshaft Assy	1	32	1457889	Cover	1
14	1457655	Plug	1	33	1307900	Screw	1
15	1457656	Gear	1	34	1318965	Screw	2
16	1457657	Key	1	35	1308030	Screw	1
17	1457658	Plate	1	36	1307891	Nut	1
18	1382546	Screw	2	37	1306359	Nut	1
19	1457659	Gear	1				

*Included In Bottom Joint Kit 1457956

AUXILIARY DRIVE DIESEL 2.6L

(Figure 37)

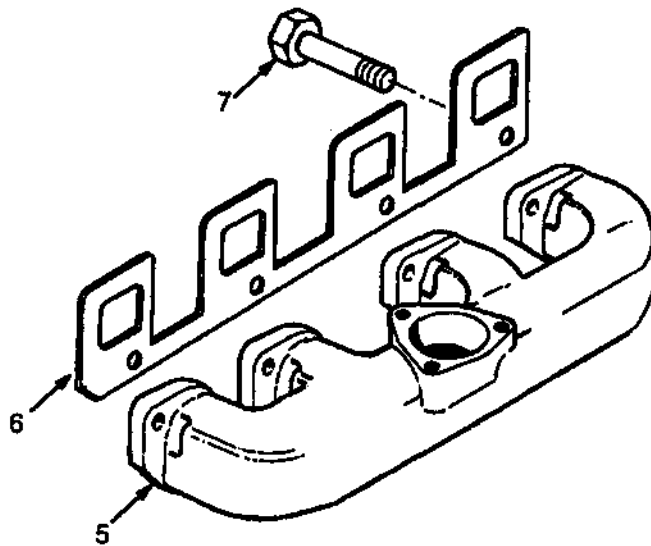
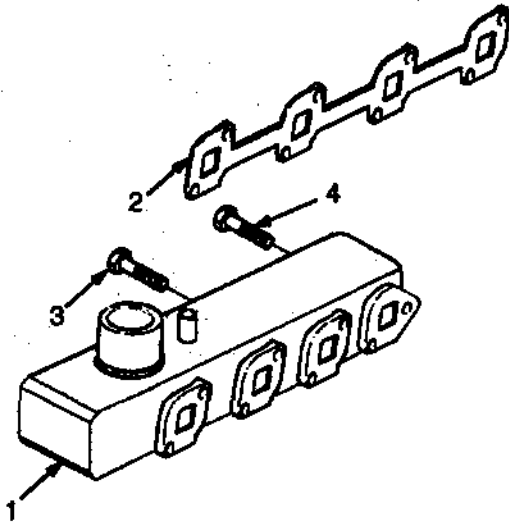


**AUXILIARY DRIVE
 DIESEL
 2.6L**

REF	PART NO.	NAME OF PART	QTY	REF	PART NO.	NAME OF PART	QTY
1	1457667	Adjuster	1	25	1457692	Screw	1
2	1457669	Pin	1	26	1457693	Washer	2
3	1457670	Spring	1	27	1457694	Nut	1
4	1457671	Shim (0,10 mm)	1	28	1457695	Spring	1
5	1457672	Shim (1,00 mm)	1	29	1457696	Nut	1
6	1457673	Adapter	1	30	1457697	Spring	1
7	1457674	Shim (0,15 mm)	1	31	1457698	Arm	1
8	1457675	Shim (0,20 mm)	1	32	1457699	Shaft	1
9	1457676	Shim (0,50 mm)	1	33	28269	Key	1
10	1457677	Circlip.	1	34	1457700	O-Ring	2
11	1457678	Arm	1	35	1354733	Nut	2
12	1457679	Pin	1	36	1457702	Washer	1
13	1457680	Pin	2	37	1457703	Washer	1
14	1457681	Pin	1	38	1457704	Screw	1
15	1457682	Washer	1	39	1457705	Nut	1
16	1457683	Screw	1	40	1457706	Screw	1
17	1457684	Arm	1	41	1457707	Spring	1
18	Camshaft - Fuel Pump	1	42	1457708	Spring	1
19	1457686	Gear Pump	1	43	1457709	Link	1
20	1457687	Plate	1	44	1457710	Spring	1
21	1457883	Screw	1	45	1457711	Pin	1
22	1457688	Weight	1	46	1457677	Circlip	1
23	1457689	Screw	4	47	1457713	Pin	1
24	1457690	Slider	1	48	1457714	Spring	1

MANIFOLD DIESEL 2.6L

(Figure 38)

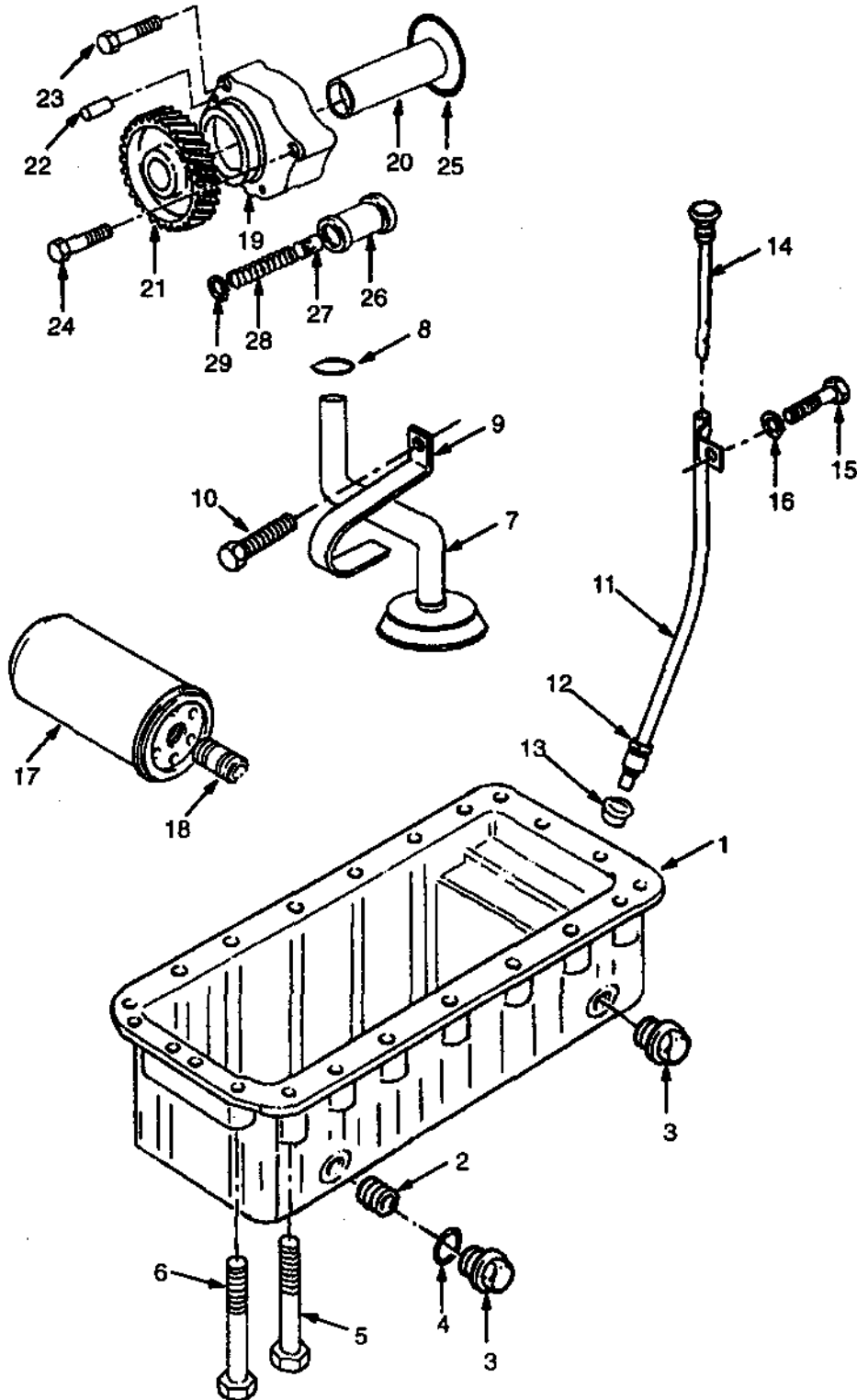


**MANIFOLD
DIESEL
2.6L**

<u>REF</u>	<u>PART NO.</u>	<u>NAME OF PART</u>	<u>QTY</u>	<u>REF</u>	<u>PART NO.</u>	<u>NAME OF PART</u>	<u>QTY</u>
1	1457891	Inductor Manifold	1	6*	1457893	Joint	1
2*	1457890	Joint	1	7	1457894	Screw	8
3	1307895	Screw	5	* Included In Top Joint Kit 1457955			
4	1318940	Screw	1				
5	1457892	Exhaust Manifold	1				

OIL SUMP, PUMP, AND FILTER DIESEL 2.6L

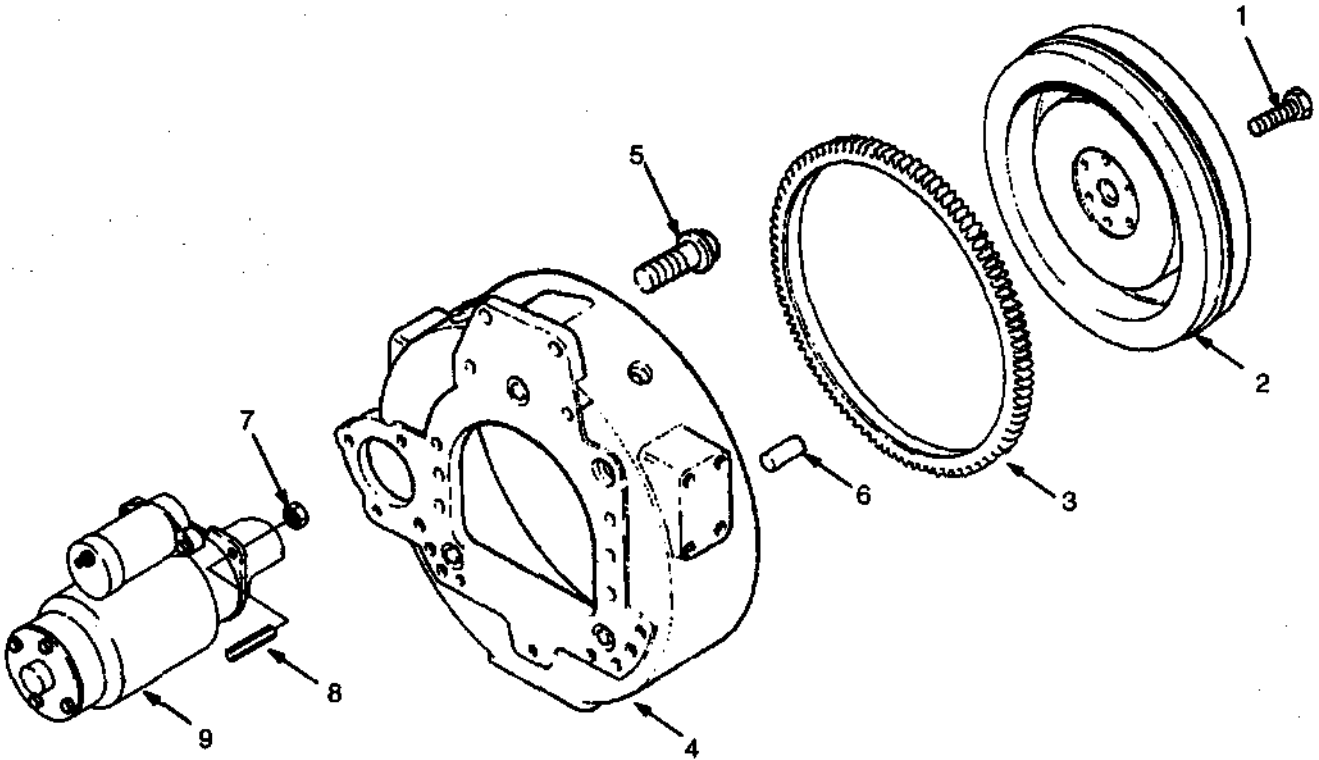
(Figure 39)



**OIL SUMP, PUMP, AND FILTER
 DIESEL
 2.6L**

REF	PART NO.	NAME OF PART	QTY	REF	PART NO.	NAME OF PART	QTY
1	1457812	Oil Sump	1	17	1457828	Oil Filter	1
2	266465	Insert	4	18	1382954	Connector	2
3	377976	Plug	4	19	1457715	Oil Pump	1
4 ^a	1306374	O-Ring	4	19	Body	1
5	1380261	Screw	2	20	Shaft	1
6	386459	Screw	22	21	1457701	Gear	1
7	1457813	Oil Pipe	1	22	1457749	Dowel	2
8 ^a	1383621	O-Ring	1	23	1307875	Screw	2
9	1457814	Clip	1	24	1457750	Screw	1
10	1457815	Screw	1	25 ^a	1457751	O-Ring	1
11	1457816	Tube Assy	1	26	1457752	Valve	1
12	1307880	Nut	1	27	1457753	Plunger	1
13	1306143	Olive	1	28	1457754	Spring	1
14	1457817	Dipstick	1	29	1457755	Circlip	1
15	1318940	Screw	1	^a Included In Bottom Joint Kit 1457956			
16	173981	Spacer	1				

FLYWHEEL DIESEL 2.6L (Figure 40)



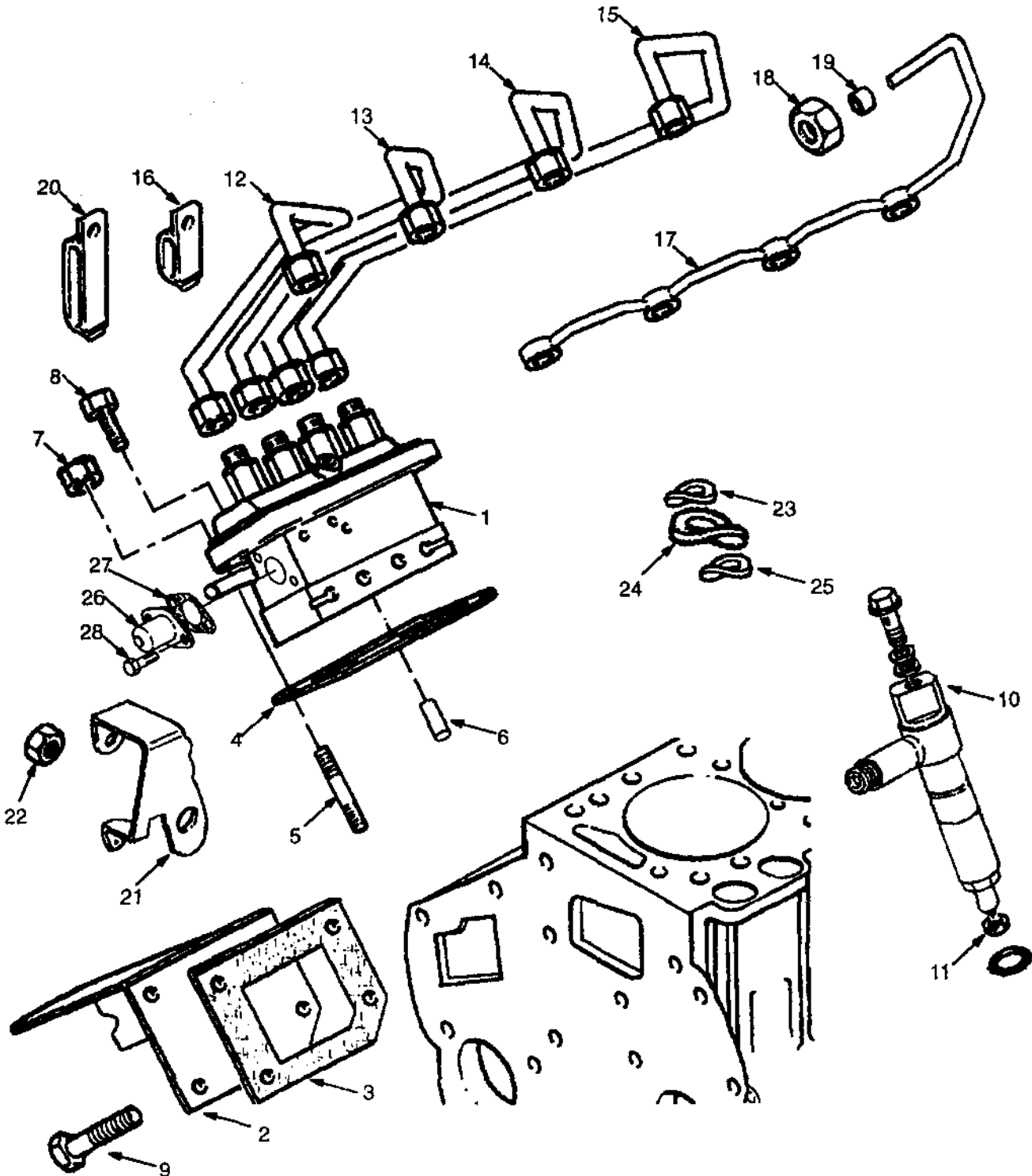
**FLYWHEEL
DIESEL
2.6L**

REF	PART NO.	NAME OF PART	QTY
	1457806	Flywheel Assy	1
1		8
2		Flywheel	1
3	1457807	Gear	1
4	1457803	Flywheel Housing	1

REF	PART NO.	NAME OF PART	QTY
5	1306355	Screw	8
6	1457805	Dowel	1
7	1370949	Nut	3
8	1457810	Stud	3
9	1457808	Starter Motor	1

FUEL INJECTION DIESEL 2.6L

(Figure 41)

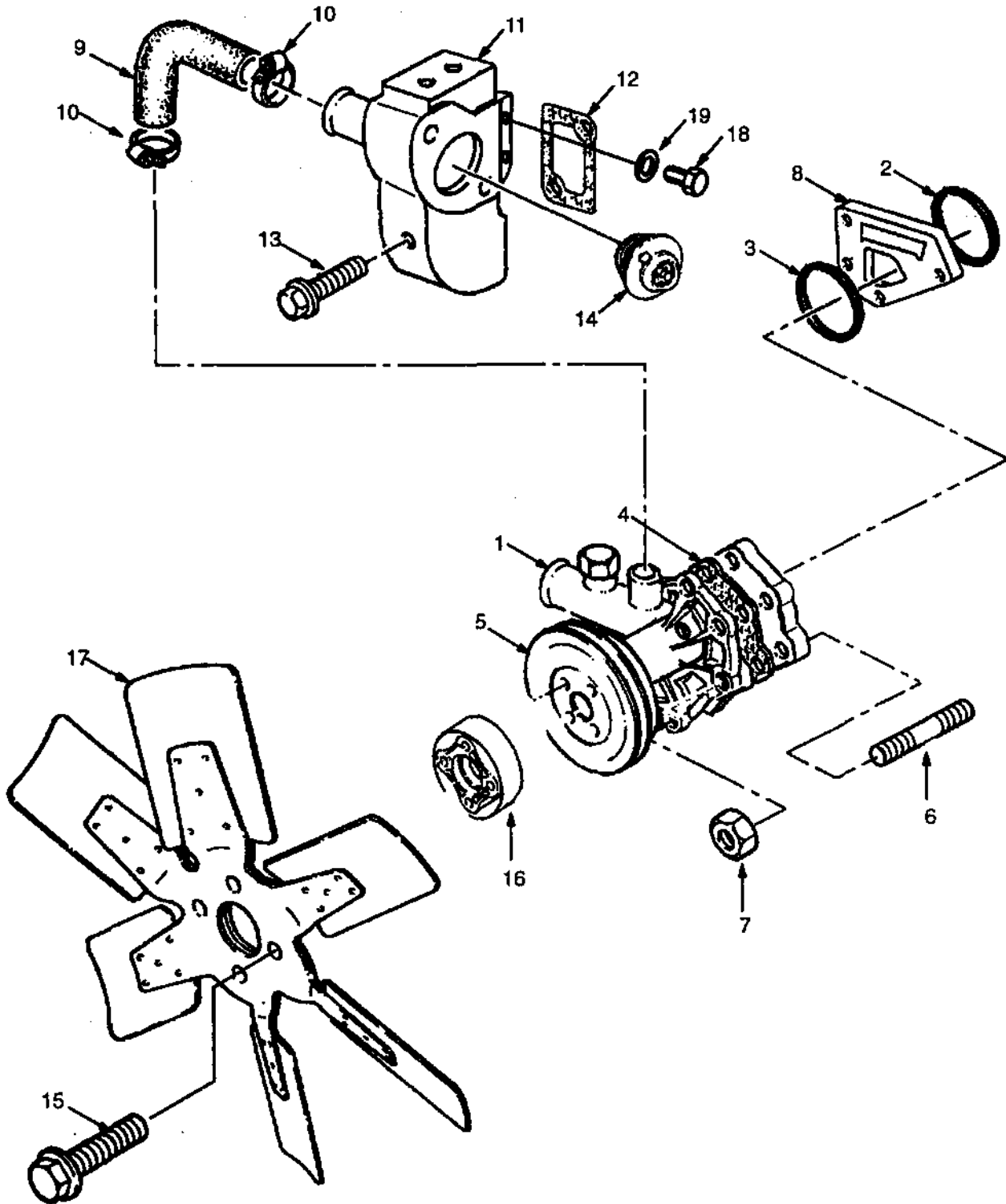


FUEL INJECTION**DIESEL****2.6L**

REF	PART NO.	NAME OF PART	QTY	REF	PART NO.	NAME OF PART	QTY
1	1457756	Injection Pump	1	14	1457769	Injection Pipe	1
2	1457757	Cover	1	15	1457770	Injection Pipe	1
3 ^{ab}	1457758	Joint	1	16	1457771	Clip	1
4	1457759	Shim (0,1 mm)	1	17	1457772	Pipe	1
4	1457760	Shim (0,2 mm) (Optional)	1	18	152609	Nut	1
4	1457761	Shim (0,3 mm) (Optional)	1	19	152608	Olive	1
4	1457762	Shim (0,4 mm) (Optional)	1	20	1388386	Clip	1
4	1457763	Shim (0,5 mm) (Optional)	1	21	1457773	Lever	1
5	1306033	Stud	2	22	1457774	Nut	1
6	1457764	Dowel	2	23	1457775	Washer	4
7	1306359	Nut	2	24	1457776	Heatsink	4
8	1307894	Screw	4	25	1457777	Washer	4
9	1307883	Screw	4	26	1457906	Solenoid	1
10	1457765	Injector	4	27	1457907	Joint	1
11 ^a	1457766	Washer	4	28	1306361	Screw	2
12	1457767	Injection Pipe	1				
13	1457768	Injection Pipe	1				

^aIncluded In Top Joint Kit 1457955^bIncluded In Bottom Joint Kit 1457956

COOLING DIESEL 2.6L (Figure 42)



**COOLING
DIESEL
2.6L**

REF	PART NO.	NAME OF PART	QTY	REF	PART NO.	NAME OF PART	QTY
1	1457847	Water Pump	1	12 *	1457864	Joint.....	1
2 *	1457859	O-Ring	1	13	1307881	Screw	1
3 *	1457860	O-Ring	1	14	301793	Thermostat	1
4 *	1457866	Joint.....	1	15	1457712	Screw	4
5	1457857	Pulley	1	16	1457872	Extension	1
6	1384400	Stud	4	17	1457873	Fan	1
7	1306359	Nut	4	18	992025	Plug	1
8	1457858	Spacer	1	19	986475	Washer	1
9	1457861	Hose	1	* Included In Kit-Joint Top 1457955			
10	1457862	Clip	2				
11	1457863	Housing	1				